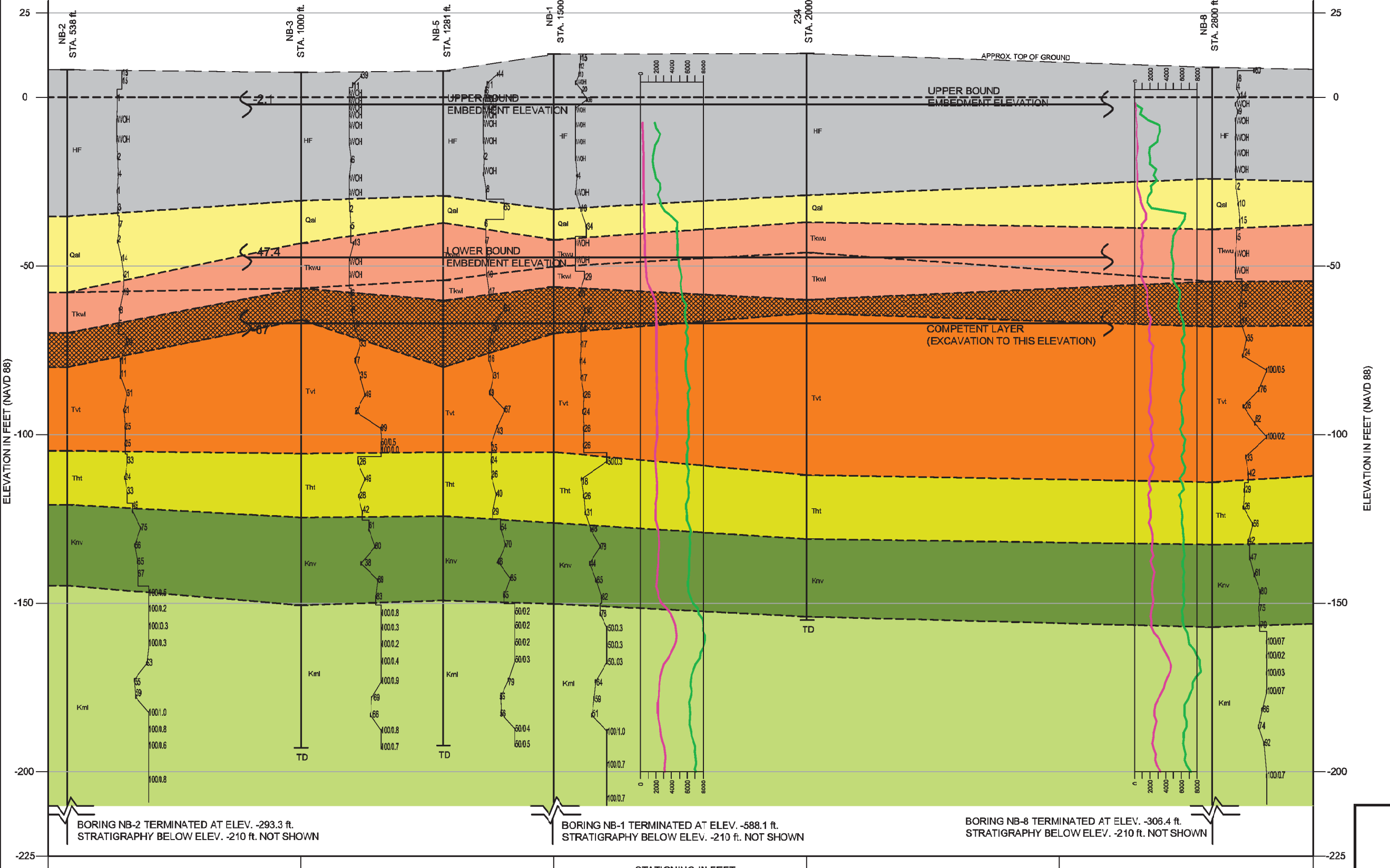


NW A 36.9 TOP OF POWER BLOCK FILL (PLANT GRADE) A' SE



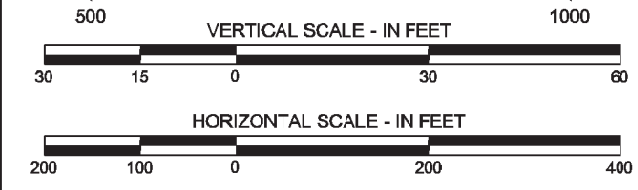
**LEGEND:**

- HF - Artificial and Hydraulic Fill
- Qal - Alluvium
- Tkou - Kirtwood Formation (Upper)
- Tkw - Kirtwood Formation (Lower)
- Tvt (cross-hatched) - Vincentown Formation (Oxidized)
- Tvt (orange) - Vincentown Formation
- Tht - Hornerstown Formation
- Knv - Navesink Formation
- Kml - Mount Laurel Formation

Standard Penetration Test N-Values, Blows per Foot (bpf)

**P-S Logging Results:**

- Red = Shear Wave Velocity (fps)
- Green = Compression Wave Velocity (fps)



**NOTES:**

- BORING 234 (DAMES & MOORE, 1974), (Reference 2.5.4.3-9), N-VALUES NOT SHOWN
- NB SERIES BORINGS COMPLETED FOR ESPA (APPENDIX 2AA)
- TD = TERMINATION DEPTH
- SEE FIGURE 2.5.4.3-2 FOR SECTION LOCATION.
- BORINGS PROJECTED ORTHOGONALLY TO SECTION LINE.
- SOME BORINGS SHOWN ON FIG-2.5.4.3-2 NOT INCLUDED DUE TO SHALLOW DEPTH OR PROXIMITY TO OTHER BORINGS.

**NOTE:**

LATERAL EXTENT OF POWER BLOCK FILL AND OF SAFETY-RELATED STRUCTURES VARIES BY TECHNOLOGY. ONLY VERTICAL RANGE FROM PLANT PARAMETER ENVELOPE IS SHOWN. LOCATIONS OF REACTOR BUILDINGS NOT DETERMINED.

**PSEG Power, LLC**

**PSEG SITE ESPA**

**Part 2, Site Safety Analysis Report**

**Reactor Building Vertical Extent**

**Bounds on Geologic Section A-A'**

**FIGURE 2.5.4.3-3**

Rev 0