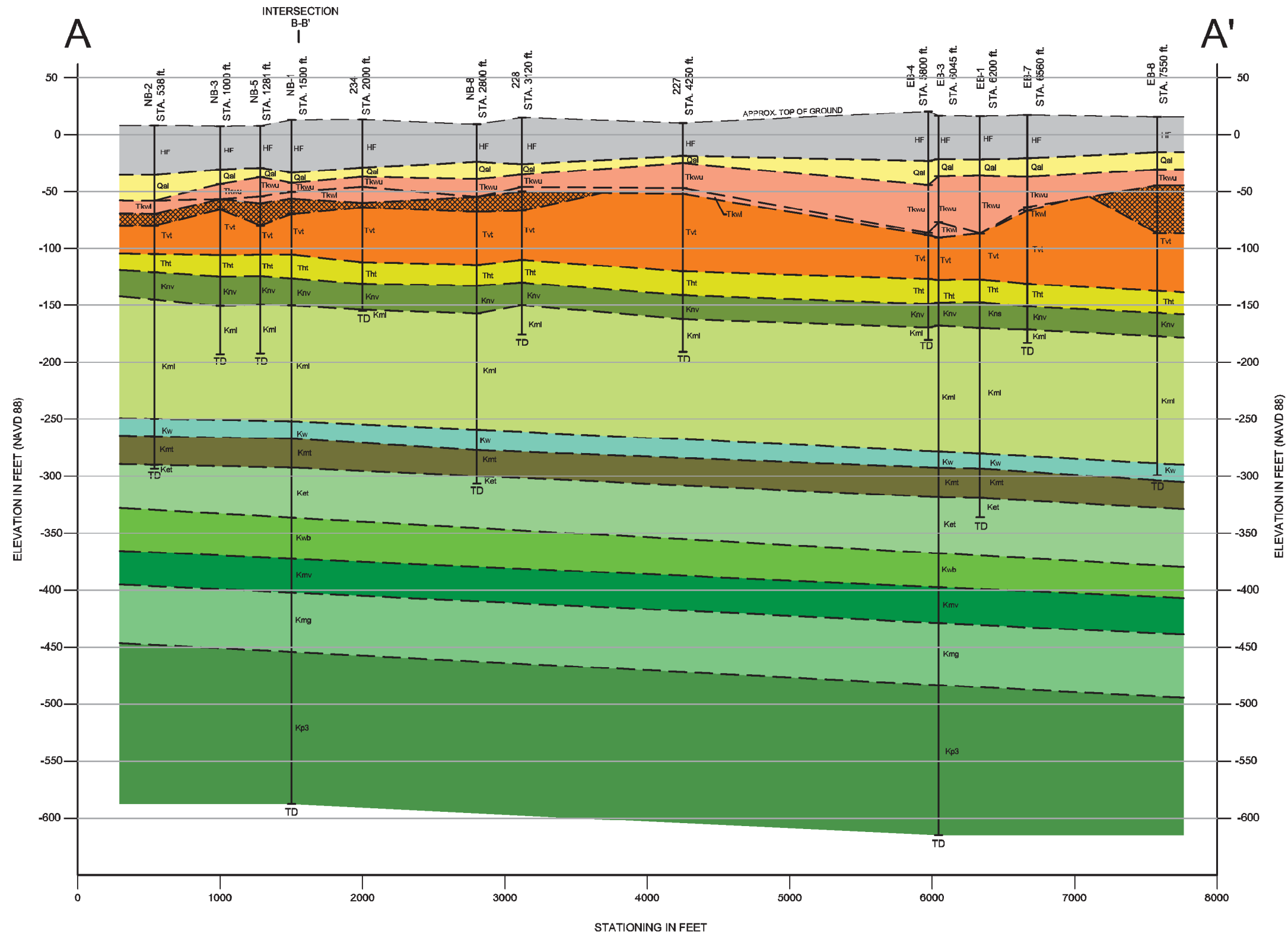


NW

SE

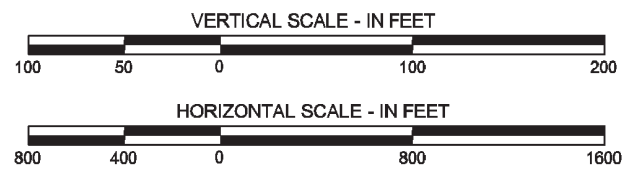


LEGEND:

- HF - Artificial and Hydraulic Fill
- Qal - Alluvium
- Tkwu - Kirkwood Formation (Upper)
- Tkwl - Kirkwood Formation (Lower)
- Tvt - Vincentown Formation (Oxidized)
- Tvt - Vincentown Formation
- Tht - Hornerstown Formation
- Knv - Navesink Formation
- Kml - Mount Laurel Formation
- Kw - Wenonah Formation
- Kmt - Marshalltown Formation
- Ket - Englishstown Formation
- Kwb - Woodbury Formation
- Kmv - Merchantville Formation
- Kmg - Magothy Formation
- Kp3 - Potomac Formation

NOTES:

- BORINGS 227, 228, AND 234 (DAMES & MOORE, 1974) (Reference 2.5.4.1-5)
- EB AND NB SERIES BORINGS COMPLETED FOR ESPA (APPENDIX 2AA)
- TD = TERMINATION DEPTH
- SEE FIGURE 2.5.4.1-1 FOR SECTION LOCATION.
- BORINGS PROJECTED ORTHOGONALLY TO SECTION LINE.
- SOME BORINGS SHOWN ON FIG-2.5.4.1-1 NOT INCLUDED DUE TO SHALLOW DEPTH OR PROXIMITY TO OTHER BORINGS.



PSEG Power, LLC  
 PSEG SITE ESPA  
 Part 2, Site Safety Analysis Report

---

Geologic Cross-Section A-A'  
 FIGURE 2.5.4.1-4 Rev 0