

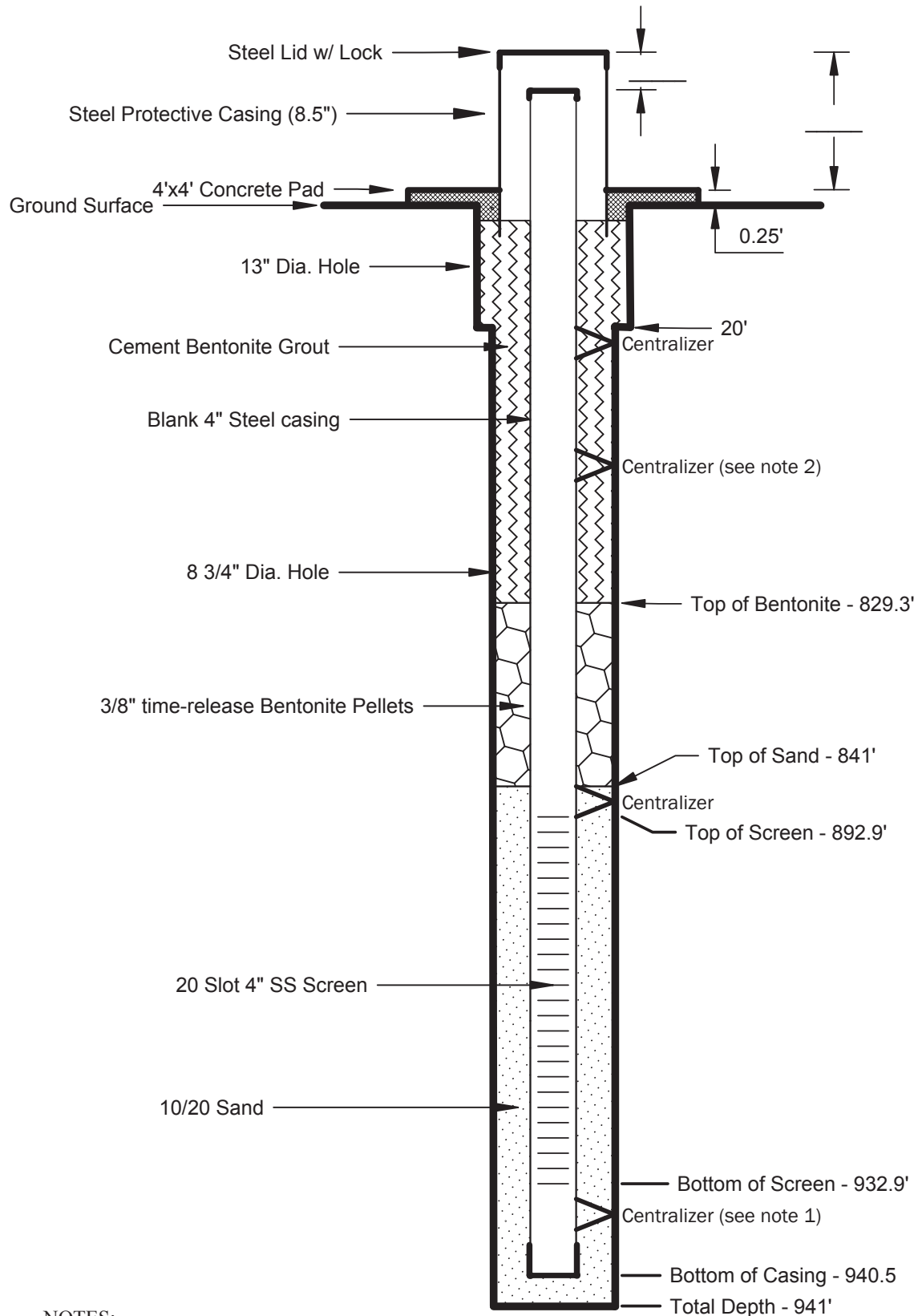
## **Appendix C**

### **Monitor Well Lithologic Log and Schematic**

# **Monitor Well Lithologic Log And Schematic**

**MONITOR WELL UMW-01**

COMPLETED 04/23/12



**NOTES:**

1. Centralizers placed within 2 feet of top and bottom of screen.
2. Centralizers placed approximately every 40 feet after top screen centralizer.

All depths below ground surface

**NOT TO SCALE**

**BD GeoEnvironmental Services**

Prepared for: Rare Element Resources

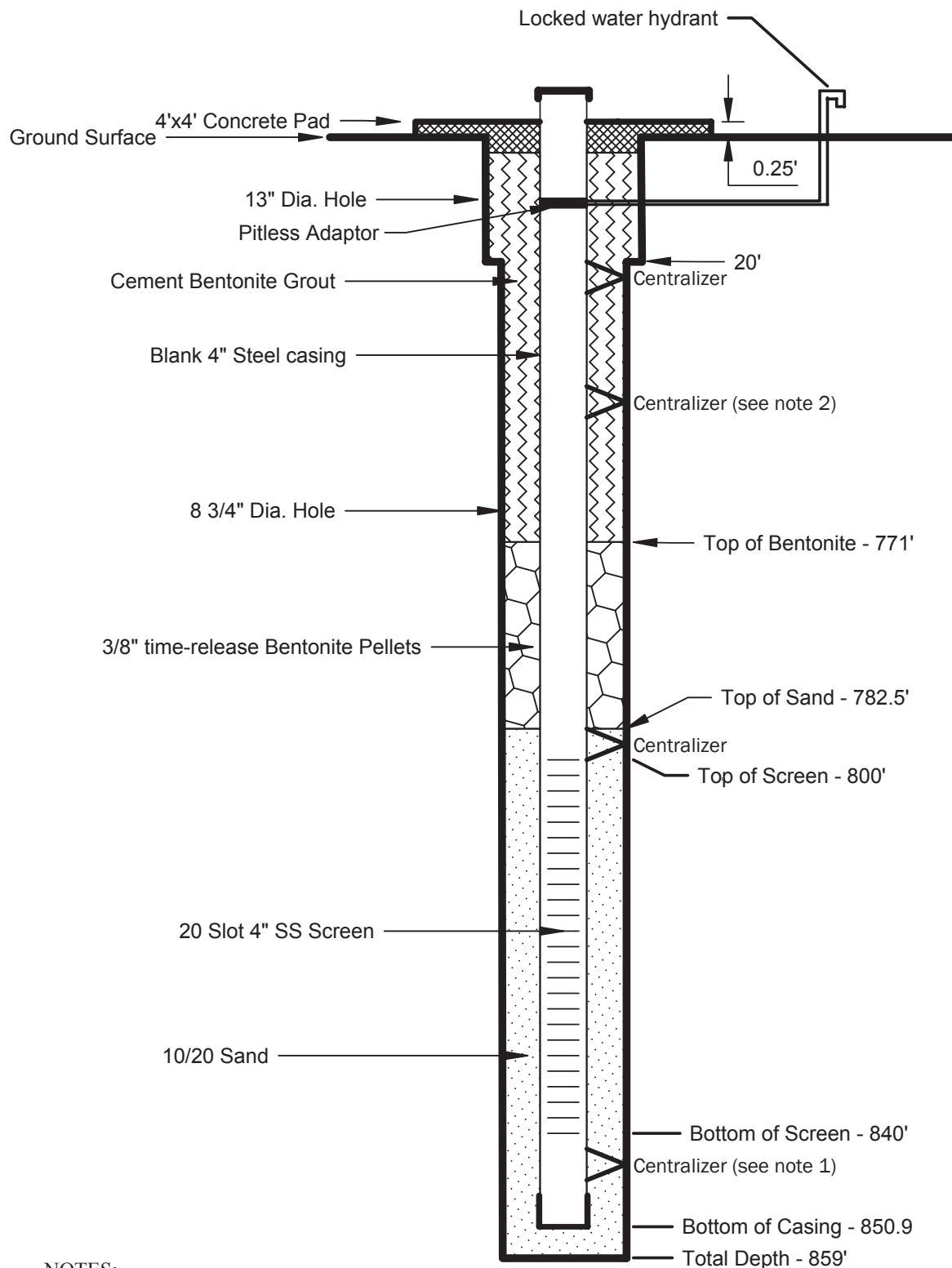
Brant A. Dennis, P.G., C.P.G.

Hole No. **UMW-01**

From	To	Lith	Descripton/Comments
	0	10 CL	lt brown to lt brwn gry, weathered shale
	10	20 CL/SH	brwn to lt gry brwn, weathered to sli. weathered
	20	30 SH	gry with bentonite, gry white
	30	900 SH	gry to dk med gry
	900	941 STS/SH	lt med gry, sli. sndy, vfg,/gry

**MONITOR WELL UMW-02**

COMPLETED 3/17/12



**NOTES:**

1. Centralizers placed within 2 feet of top and bottom of screen.
2. Centralizers placed approximately every 40 feet after top screen centralizer.

All depths below ground surface

**NOT TO SCALE**

**BD GeoEnvironmental Services**

Prepared for: Rare Element Resources

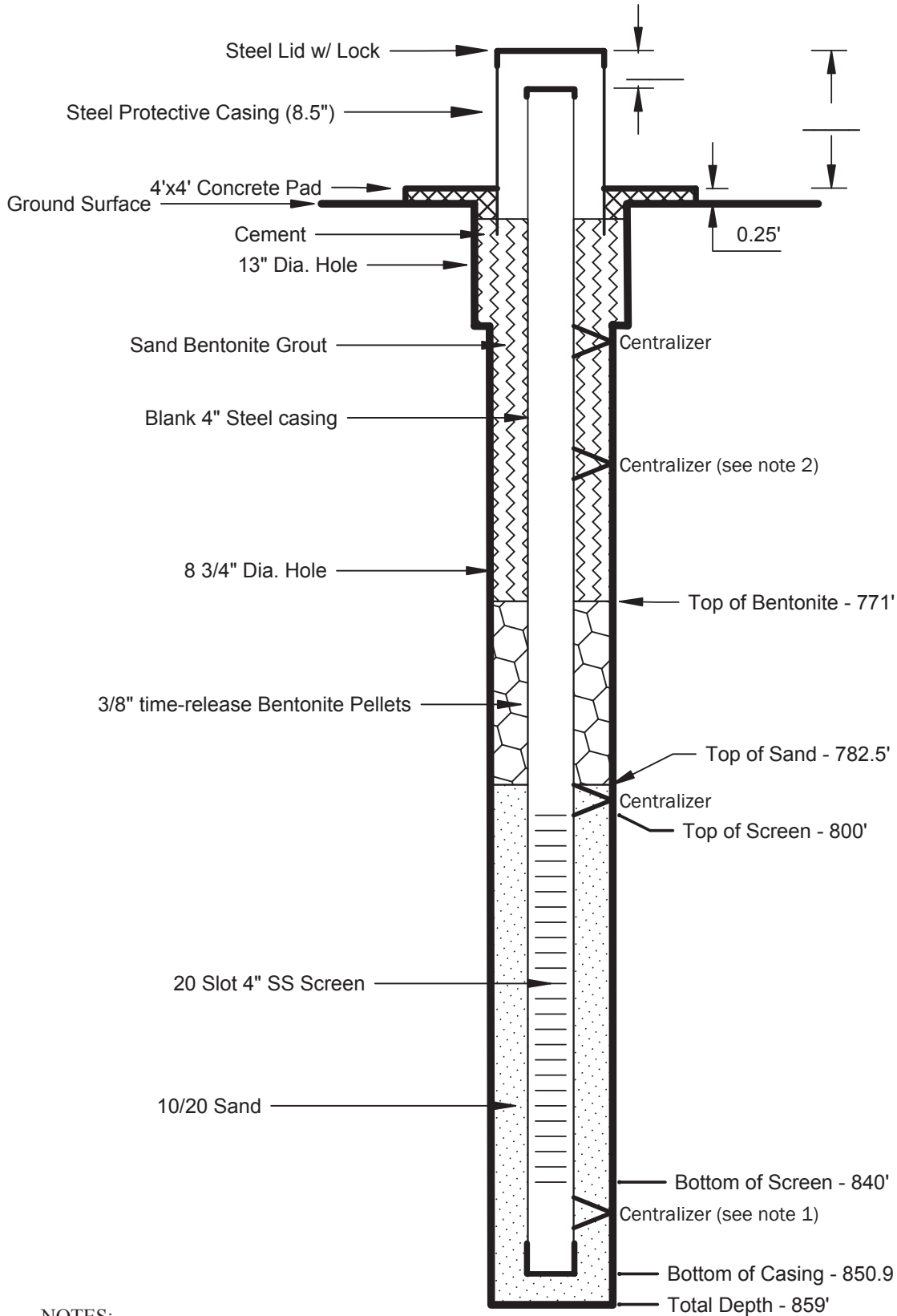
Brant A. Dennis, P.G., C.P.G.

Hole No. **UMW-02**

From	To	Lith	Descripton/Comments
	0	20 CL	lt. gry brwn, soft
	20	135 SH	lt brwn gry to med gry
	135	180 SH	gry to dk med gry, occ. Gry white bentonite lenses
	180	340 SH	gry to dk med gry
	340	360 STS/SH	brwn gry to lt med gry, sli. sndy, vfg,
	360	365 SH/STS	dk med gry/ly med gry, sli. Sndy, vfg
	365	595 SH	dk med gry
	595	645 SH	dk med gry, v. sli. silty to sli. silty, mnr SS, vfg, cemented
	645	655 SS/STS	lt.brwn gry, vfg, vfg, inc. SH w/ depth, dk med gry
	655	675 SH	dk med gry, w/ thin SS/STS lenses(<20%), lt. brwn
	675	720 SS/SH	lt med gry, vfg, silty/dk med gry

**MONITOR WELL UMW-03**

INSTALLED 04/01/12



**NOTES:**

1. Centralizers placed within 2 feet of top and bottom of screen.
2. Centralizers placed approximately every 40 feet after top screen centralizer.

All depths below ground surface

**NOT TO SCALE**

**BD GeoEnvironmental Services**

Prepared for: Rare Element Resources

Brant A. Dennis, P.G., C.P.G.

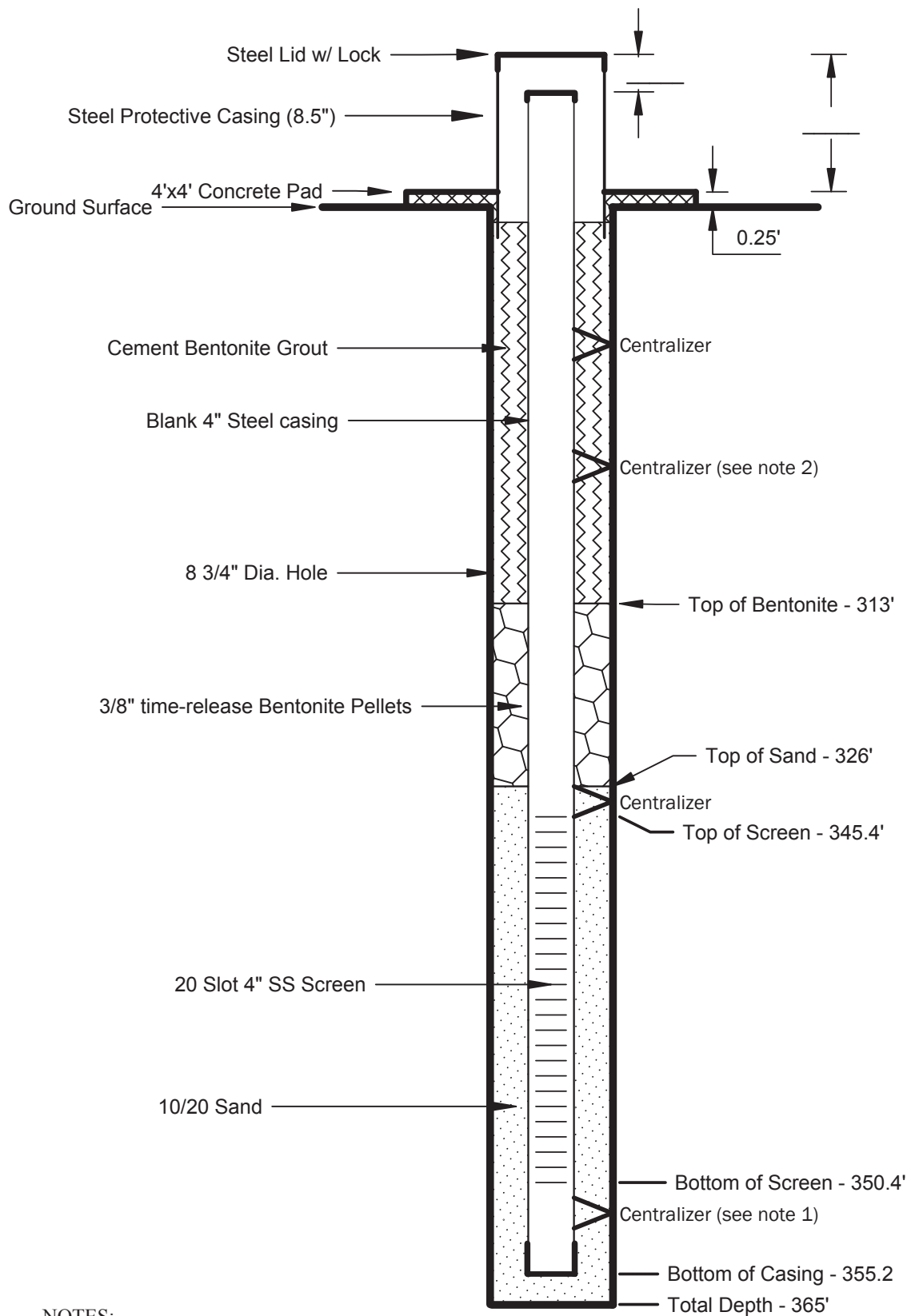
Hole No. **UMW-03**

From	To	Lith	Descripton/Comments
	0	12 CL/SH	weathered, lt. gry brwn, silty(<5%)
	12	805 SH	gry to drk med. gry., occ. STS lenses, occ. bentonite lenses
	805	820 SH/STS/SS	gry to lt med gry, vfg
	820	860 STS/SS/H	lt. gry white, vfg, not well cemented; SH-gry



**MONITOR WELL UMW-04**

INSTALLED 03/16/13



**NOTES:**

1. Centralizers placed within 2 feet of top and bottom of screen.
2. Centralizers placed approximately every 40 feet after top screen centralizer.

All depths below ground surface

**NOT TO SCALE**

**BD GeoEnvironmental Services**

Prepared for: Rare Element Resources

Brant A. Dennis, P.G., C.P.G.

Hole No. **UMW-04**

From	To	Lith	Descripton/Comments
	0	20 CL	Lt. gry-brwn, mnr sand/gravel
	20	25 CL/SH	Lt. gry-brwn, sli. Weathered
	25	240 SH	gey to dk med gry., occ. Bentonite, white
	240	245 SH	gry, STS (<40%), lt grey brown
	245	340 SH	gry to dk med gry
	340	360 STS/SH	lt gry brwn, v. sli. Sndy, vfg/dk. med gry. No cementation
	360	365 SH	dk med gry

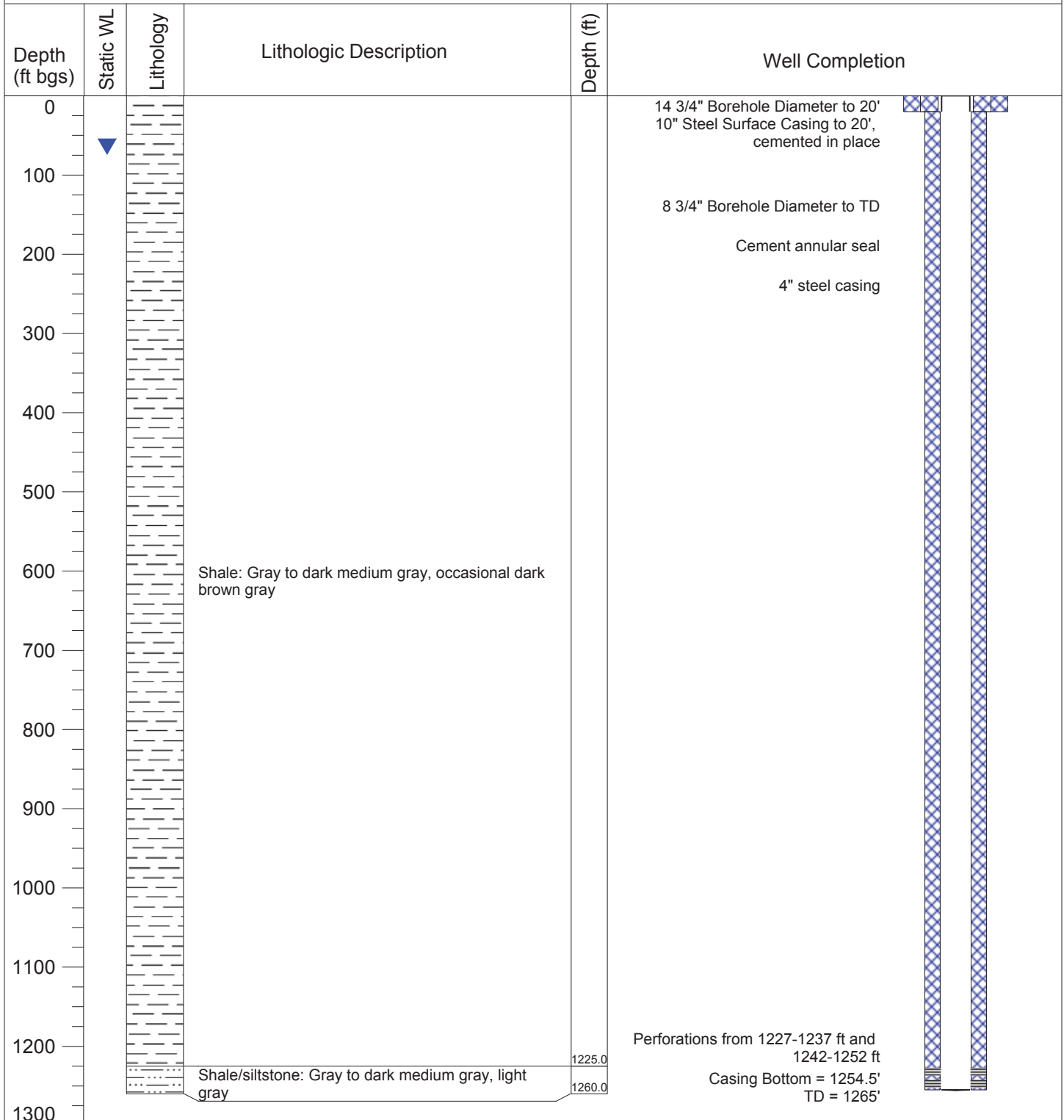


**Monitor Well:UMW-05**

Sheet 1 of 1

Project: Upton Site  
 County: Weston County, WY  
 Total Depth (ft): 1265  
 TOC Elevation (ft amsl): 4318 (est.)  
 Location: SE 1/4, NW 1/4, Sec 33, T48N, R65W

Date Drilled: 2/7/13  
 Driller: TYVO Portadrill  
 Drilling Method: Rotary w/ Water/Gel  
 Date Installed: 2/26/13  
 Surface Completion: 8.5" locking steel well box (3.0' ags)



Note: Well Installation by B. Dennis (BD GeoEnvironmental Services). Completion information & field observations provided by BD.

Note: Lithologic logging by Brant Dennis, WY PG-2197 (BD GeoEnvironmental Services)

Note: Water level represents initial level after installation.

HoleName	From_Ft	To_Ft	LITH_CODE	LITHOLOGY	COMMENTS
UMW-05	0	1225	SH	Shale	gry to dk med gry, occ. Dk brwn gry
UMW-05	1225	1260	SH/STS	Shale/Siltstone	gry to dk med gry, lt gry