

**LEGEND**

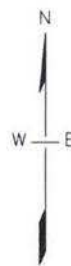
3756.2 Chadron Formation Water Level Elevation (ft-amsl)

\* Chadron Formation Artesian Well

Notes: Wells 52, 65, 114 and RC-3 have been abandoned.

0 0.5 1.0 2.0

SCALE IN FEET 1" = 1 MILE



**CROW BUTTE  
RESOURCES, INC.**

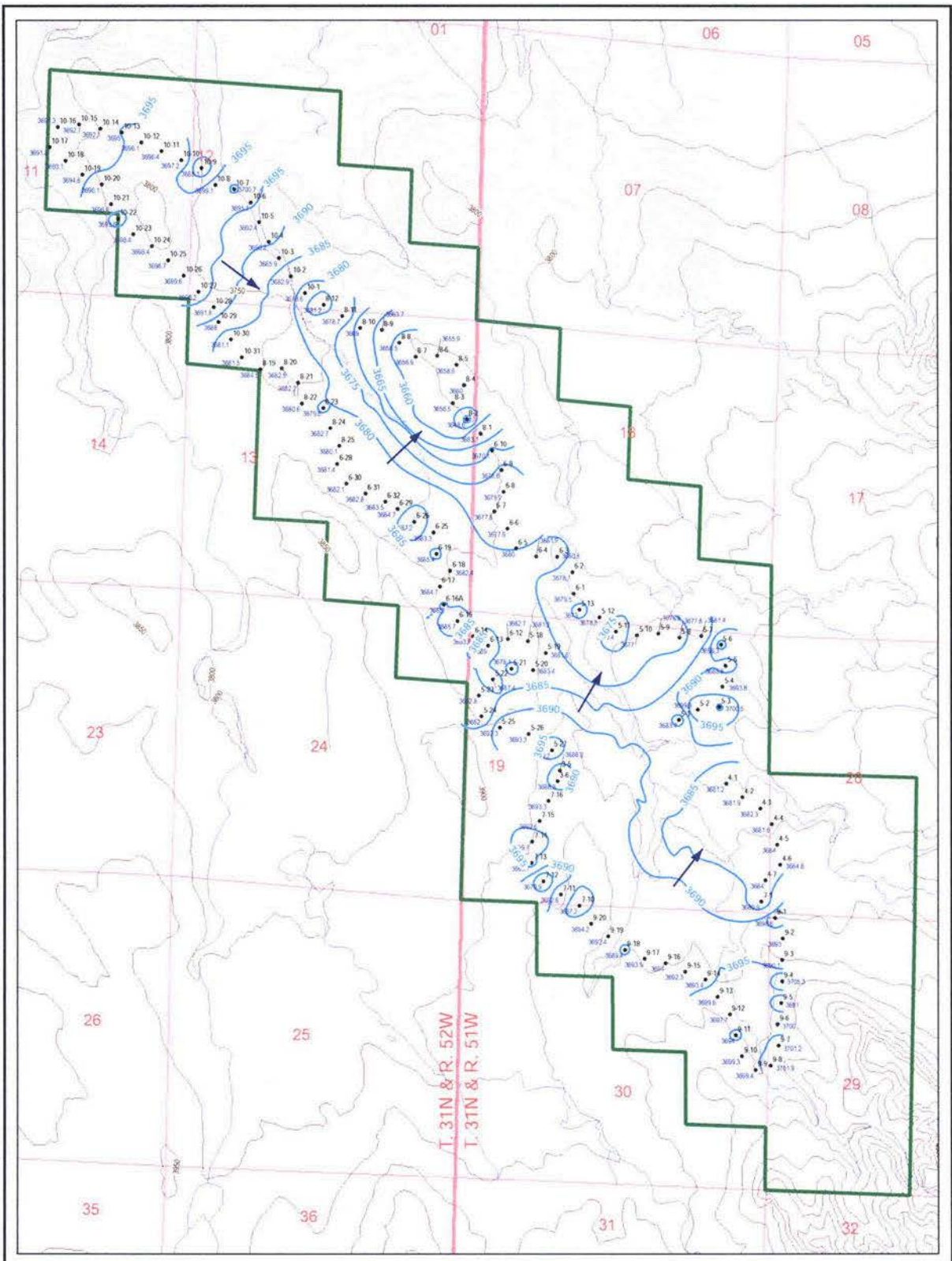
**FIGURE 2.7-4a  
REGIONAL WATER LEVEL MAP  
BASAL CHADRON SANDSTONE 1982-1983**

PROJECT: CO001322.0001 MAPPED: JC CHECKED: MS

FILE: CSA\_FIGURE 2.7-4a REGIONAL WATER LEVEL\_BCS.psd




630 Plaza Drive, Ste 100  
Highlands Ranch, CO 80129  
P: 720-344-3500 F: 720-344-3535  
www.arcadis-us.com



**LEGEND**

- 10 Well ID
- Basal Chadron Sandstone Water Well
- 3694.2 Groundwater Elevation (F.T.AMSL)
- Elevation Contours (F.T.AMSL)
- Groundwater Elevation Contour (5-FT Interval)
- 3690 Groundwater Elevation (F.T.AMSL)
- Stream or Canal
- Direction of Groundwater Flow
- Class III Permit Boundary





**CROW BUTTE RESOURCES, INC.**

FIGURE 2.7-4d  
**CURRENT LICENSE AREA  
 POTENTIOMETRIC SURFACE -  
 BASAL CHADRON SANDSTONE (2/23/09 – 3/5/09)**

PROJECT: CO001322    MAPPED: JC    CHECKED: MS

FILE: CSA\_BCS\_POTENTIOMETRIC\_0309.MXD

**ARCADIS**  
Infrastructure. environment. buildings.

630 Plaza Drive, Ste. 100  
 Highlands Ranch, CO 80129  
 P 720-344-3500 F 720-344-3535  
 www.arcadis-us.com