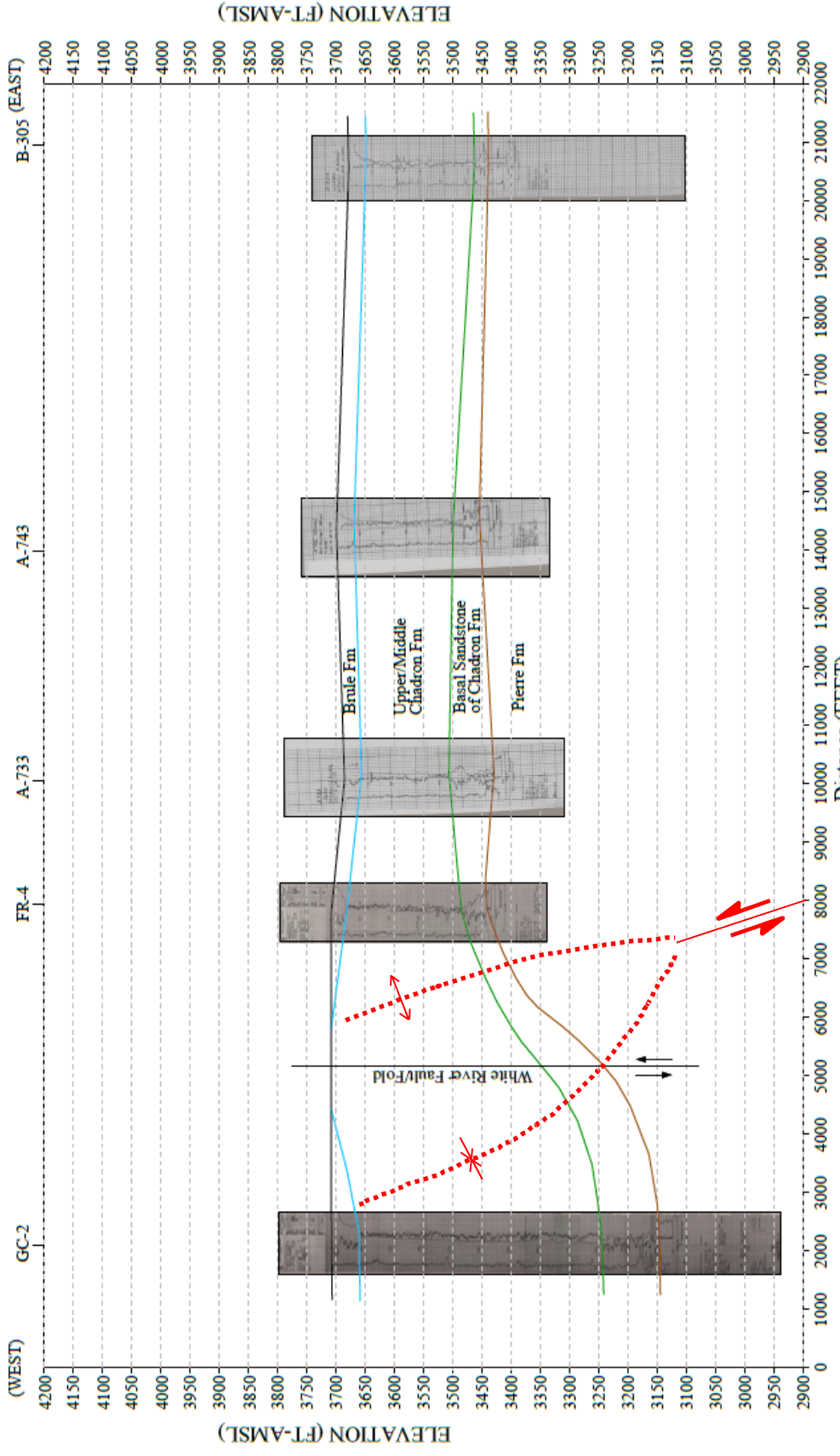


FIGURE 2.6-4 Cross Section 512,000 E-W



REV. DATE	CAMECO RESOURCES
REV. 1 8/2/12	CROW BUTTE OPERATION
	Dawes County, Nebraska
	CROSS-SECTION 512,000 E-W
	FIGURE 2.6-4
	Prepared by: CBO
	Drawn by: Wade Beins

