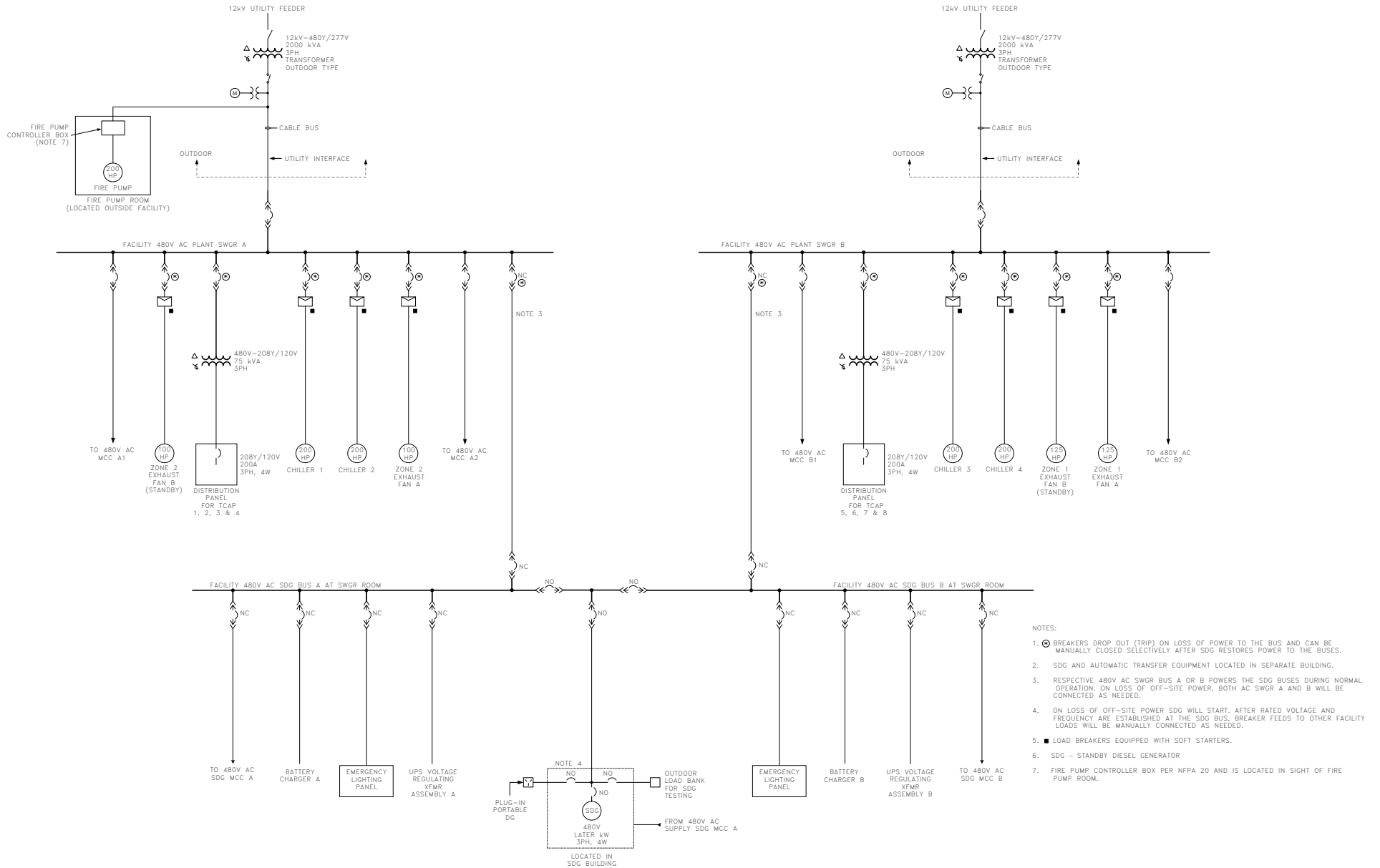


Figure 8a2.1-1 – One-Line Diagram – Normal Electrical Power Supply System



- NOTES:
1. Breakers drop out (trip) on loss of power to the bus and can be manually closed selectively after SDG restores power to the buses.
  2. SDG and automatic transfer equipment located in separate building.
  3. Respective 480V AC SWGR A or B powers the SDG buses during normal operation. On loss of off-site power, both AC SWGR A and B will be connected as needed.
  4. On loss of off-site power SDG will start. After rated voltage and frequency are established at the SDG bus, breaker feeds to other facility loads will be manually connected as needed.
  5. Load breakers equipped with soft starters.
  6. SDG - Standby Diesel Generator
  7. Fire Pump Controller Box per NFPA 20 and is located in sight of fire pump room.