

Attachment 1

Topical Report Amendment 23

Pages 17-15, 17-20, and 17-21

Marked Copy Showing Proposed Changes

9806030417 980525
PDR ADOCK 05000269
P PDR

Reporting to the Chairman/Chief Executive Officer and President/Chief Operating Officer is the President, Energy Transmission who directs several activities, including the Electric Transmission Department through its senior vice president.

Duke's organization reflects the concept of quality assurance as an interdisciplinary function involving various groups. As such, the attainment of quality rests with those assigned the responsibility of performing the activity. The verification of quality is assigned to qualified personnel independent of the responsibility for performance or direct supervision of the activity. The degree of independence varies commensurate with the activity's importance to safety.

The policies described in this document are implemented through departmental program manuals and procedures, and are, therefore, transmitted to all levels of management.

Organization charts for various departments/locations are contained in Chapter 13 of the respective Station Final Safety Analysis Report.

17.3.1.2.2 Nuclear Generation Department

The Nuclear Generation Department has direct line responsibility for all Duke Energy Corporation nuclear station operations. The Nuclear Generation Department is responsible for achieving quality results during engineering, preoperational testing, operation, testing, maintenance and modification of the Corporation's nuclear stations and with complying with applicable codes, standards and NRC regulations. The functions of Nuclear Generation are directed by the Executive Vice President, Nuclear Generation.

The Executive Vice President, Nuclear Generation formulates, recommends, and carries out plans, policies, and programs related to the nuclear generation of electric power; and reports to the President, Duke Power Group. The Executive Vice President, Nuclear Generation is informed of significant problems or occurrences relating to safety and quality assurance through established administrative procedures, and participates directly in their resolution, where necessary.

a) Nuclear Site Organization

The Nuclear Site Vice Presidents (Site Officer) report to the Executive Vice President, Nuclear Generation. The Site Officer is also responsible for the administration, implementation, and assessment of the quality assurance program as it applies to station operation. In the discharge of their responsibilities, the Site Officers direct the activities of the station organizations.

Reporting to the Site Officer for each nuclear station, is a Manager, Nuclear Station who is assigned the direct responsibility for the safe operation of the facility. The qualification requirements for the Manager, Nuclear Station are in accordance with the provisions of ANSI N18.1-1971 and are presented in each station's FSAR.

b) Nuclear Generation Department, Nuclear Generation Office

The Nuclear Generation Department, Nuclear General Office, is divided into three divisions. The activities of each division are directed by a manager who reports to the Executive Vice President, Nuclear Generation. The three divisions within the Nuclear General Office are: 1) Nuclear Engineering, which provides support to the stations in severe accident analysis, safety analysis, nuclear design, fuels/core management, and plant engineering, (2) ~~Station Support~~ ^{Nuclear Services}, which provides technical support to the stations in work control, ~~and human performance~~, chemistry, radiation protection, steam

DUKE ENERGY CORPORATION
CORPORATE ORGANIZATION

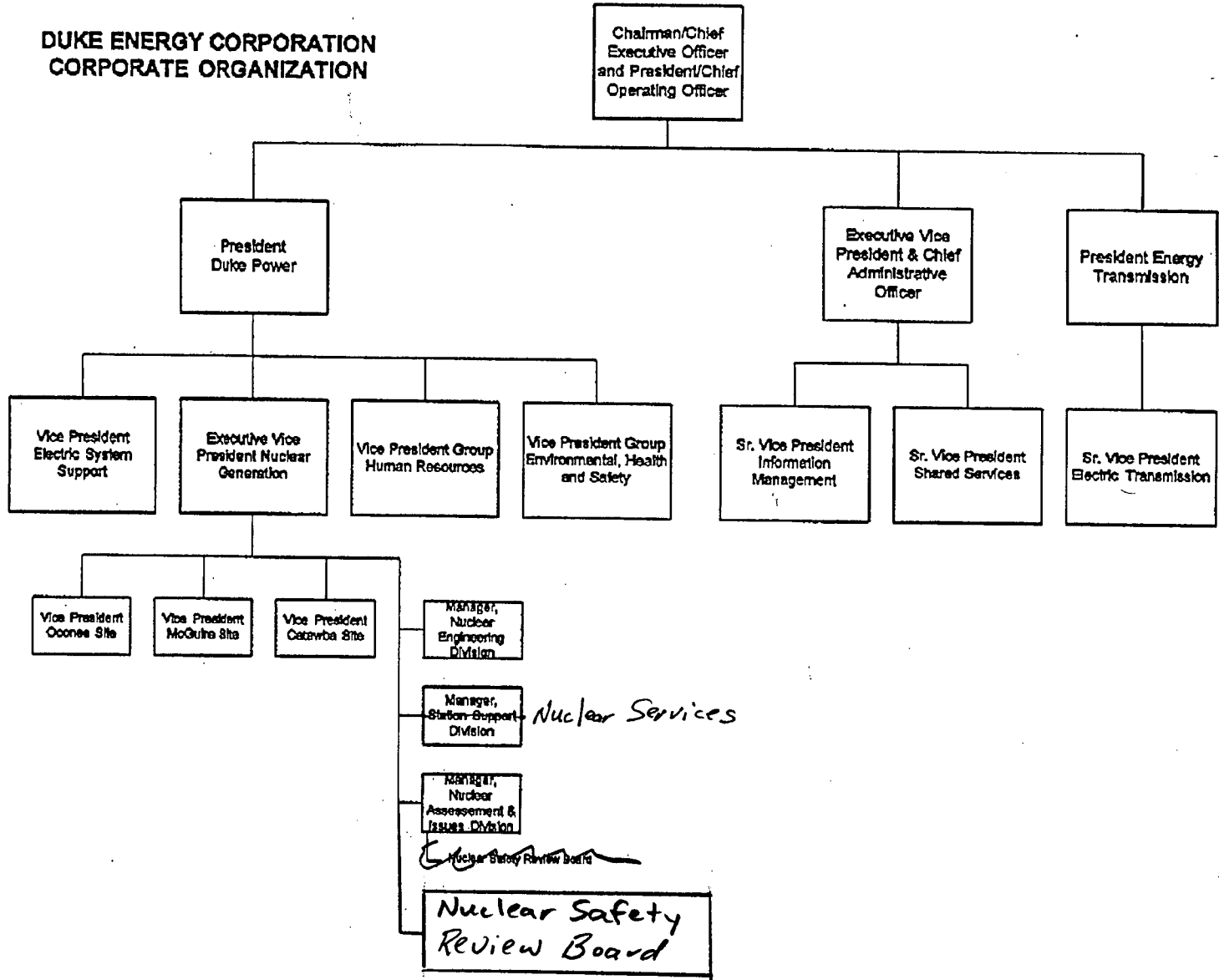
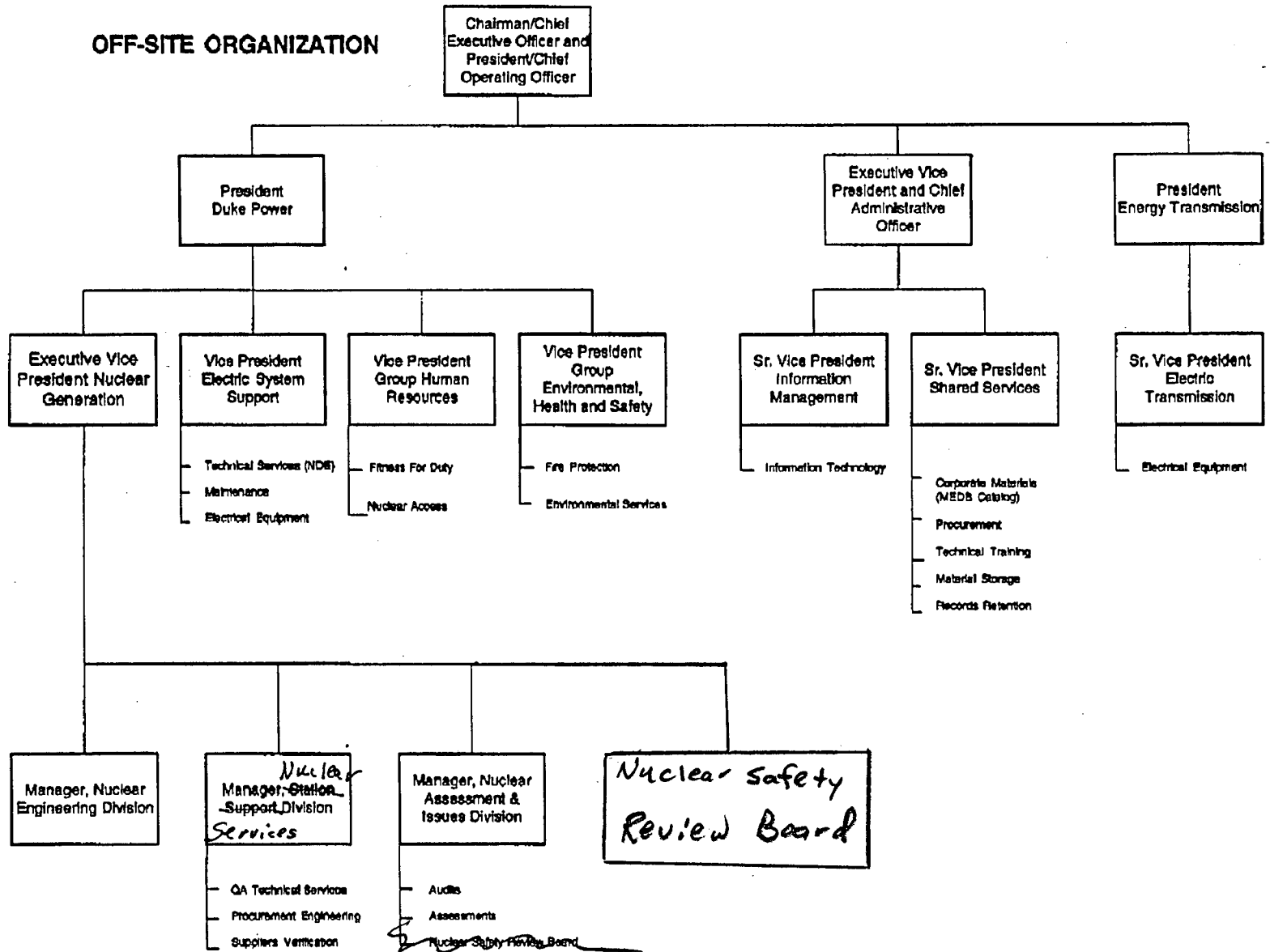


Figure 17-2: Duke Energy Corporation Corporate Organization

Figure 17-3. Off-Site Organization



Attachment 2

Topical Report Amendment 23

Proposed Pages 17-15, 17-20, and 17-21



reporting to the Chairman/Chief Executive Officer and President/Chief Operating Officer is the President, Energy Transmission who directs several activities, including the Electric Transmission Department through its senior vice president.

Duke Power Company
 526 South Church Street
 P.O. Box 1006
 Charlotte, NC 28201-1006

Duke's organization reflects the concept of quality assurance as an interdisciplinary function involving various groups. As such, the attainment of quality results with those assigned the responsibility of performing the activity. The verification of quality is assigned to qualified personnel independent of the responsibility for performance or direct supervision of the activity. The degree of independence varies commensurate with the activity's importance to safety.

(704) 382-2200 OFFICE
 (704) 382-4360 FAX

The policies described in this document are implemented through departmental program manuals and procedures, and are, therefore, transmitted to all levels of management.

Organization charts for various departments/locations are contained in Chapter 13 of the respective Station Final Safety Analysis Report.

17.3.1.2.2 Nuclear Generation Department

The Nuclear Generation Department has direct line responsibility for all Duke Energy Corporation nuclear station operations. The Nuclear Generation Department is responsible for achieving quality results during engineering, preoperational testing, operation, testing, maintenance and modification of the Corporation's nuclear stations and with complying with applicable codes, standards and NRC regulations. The functions of Nuclear Generation are directed by the Executive Vice President, Nuclear Generation.

The Executive Vice President, Nuclear Generation formulates, recommends, and carries out plans, policies, and programs related to the nuclear generation of electric power; and reports to the President, Duke Power Group. The Executive Vice President, Nuclear Generation is informed of significant problems or occurrences relating to safety and quality assurance through established administrative procedures, and participates directly in their resolution, where necessary.

a) Nuclear Site Organization

The Nuclear Site Vice Presidents (Site Officer) report to the Executive Vice President, Nuclear Generation. The Site Officer is also responsible for the administration, implementation, and assessment of the quality assurance program as it applies to station operation. In the discharge of their responsibilities, the Site Officers direct the activities of the station organizations.

Reporting to the Site Officer for each nuclear station, is a Manager, Nuclear Station who is assigned the direct responsibility for the safe operation of the facility. The qualification requirements for the Manager, Nuclear Station are in accordance with the provisions of ANSI N18.1-1971 and are presented in each station's FSAR.

b) Nuclear Generation Department, Nuclear Generation Office

The Nuclear Generation Department, Nuclear General Office, is divided into three divisions. The activities of each division are directed by a manager who reports to the Executive Vice President, Nuclear Generation. The three divisions within the Nuclear General Office are: 1) Nuclear Engineering, which provides support to the stations in severe accident analysis, safety analysis, nuclear design, fuels/core management, and plant engineering, (2) Nuclear Services, which provides technical support to the stations in work control, chemistry, radiation protection, steam generator maintenance, quality

Figure 17-2: Duke Energy Corporation Corporate Organization

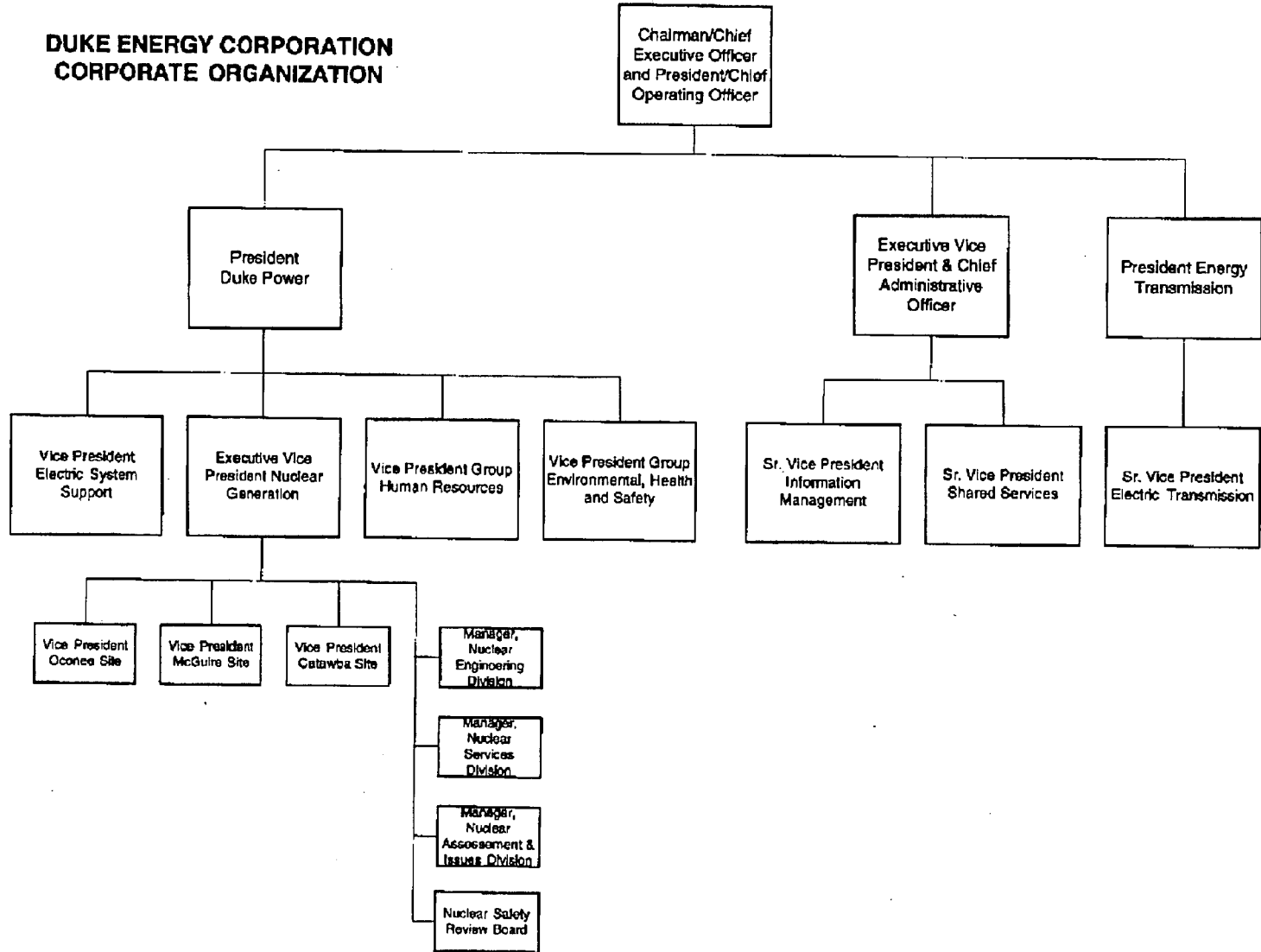


Figure 17-3: Off-Site Organization

