

**U.S.NRC**  
United States Nuclear Regulatory Commission  
*Protecting People and the Environment*

# ***Pilgrim Annual Assessment Meeting***

---

**Nuclear Regulatory Commission - Region I  
Plymouth, MA  
March 18, 2015**

1



## ***Agenda***

- **Introductions**
- **Reactor Oversight Process**
- **Results of the supplemental inspection**
- **NRC and Entergy will discuss the company's 2014 performance and Entergy's efforts to address improvement initiatives**
- **NRC Closing Remarks**
- **Break**
- **Q and A session**

2

*Protecting People and the Environment*



## Performance Assessment

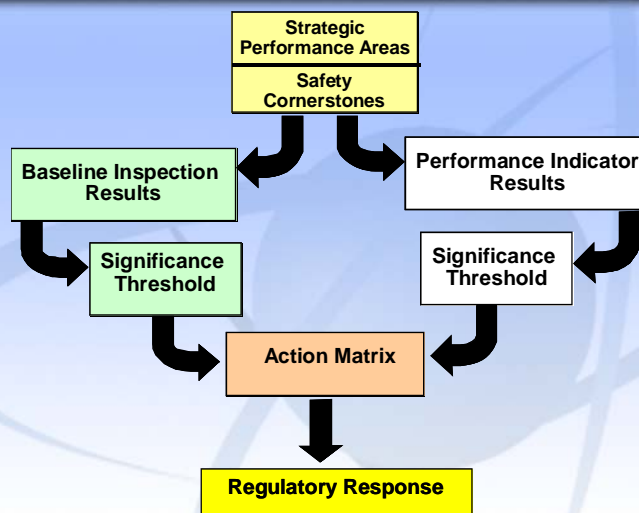
- Pilgrim operated safely in 2014.
- Pilgrim was in the degraded cornerstone column of the NRC Action Matrix throughout 2014 and remains in the degraded cornerstone as of this date— meaning the plant continues to get increased NRC oversight.

3

*Protecting People and the Environment*



## Reactor Oversight Process



4

*Protecting People and the Environment*



## **Pilgrim 2014 Inspection Activities**

- Approximately 6500 hours of inspection & related activities
- 2 resident inspectors on site
- Team and specialist inspections, including:
  - Dry cask storage operation
  - Supplemental inspection

5

*Protecting People and the Environment*



## **Pilgrim Assessment Results**

### **January 1 - December 31, 2014**

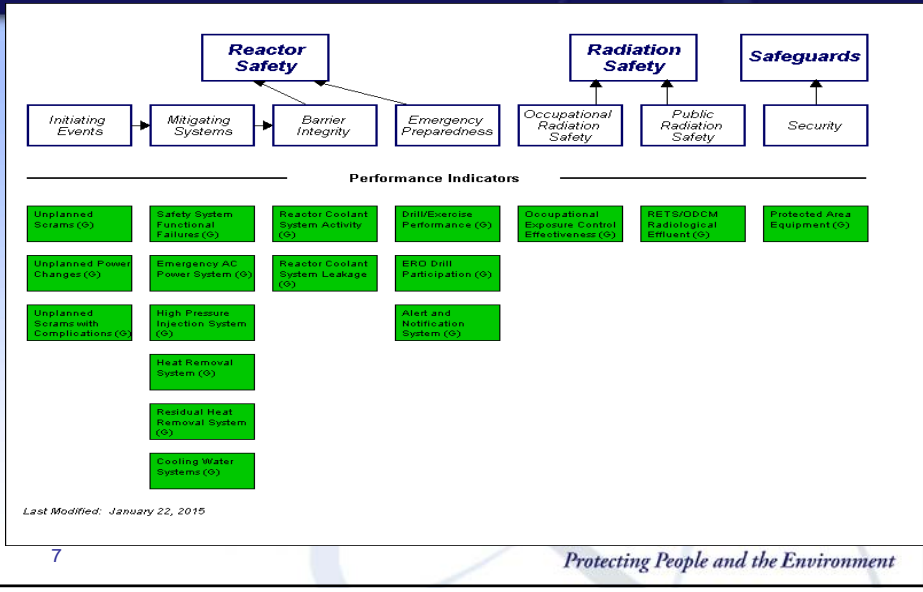
- Two White Performance Indicators (PI's)
  - Unplanned scrams per 7000 critical hours returned to Green in the 1<sup>st</sup> quarter of 2014
  - Unplanned scrams with complications returned to Green in the 3<sup>rd</sup> quarter of 2014
- Two “parallel” White Findings were assigned to replace the PI's noted above
- All other PI's and Findings were Green

6

*Protecting People and the Environment*



# Pilgrim's Performance Indicators



# Pilgrim's Inspection Findings

**Reactor Safety** is supported by: Initiating Events, Mitigating Systems, Barrier Integrity, and Emergency Preparedness.

**Radiation Safety** is supported by: Occupational Radiation Safety and Public Radiation Safety.

**Safeguards** is supported by: Security.

**Most Significant Inspection Findings:**

Quarter	Initiating Events	Mitigating Systems	Barrier Integrity	Emergency Preparedness	Occupational Radiation Safety	Public Radiation Safety	Security
4Q/2014	G	No findings this quarter	No findings this quarter	No findings this quarter	No findings this quarter	No findings this quarter	No findings this quarter
3Q/2014	W (1)	No findings this quarter	No findings this quarter	No findings this quarter	No findings this quarter	No findings this quarter	G
2Q/2014	No findings this quarter	No findings this quarter	G	No findings this quarter	No findings this quarter	No findings this quarter	No findings this quarter
1Q/2014	W (1)	G	No findings this quarter	No findings this quarter	No findings this quarter	No findings this quarter	No findings this quarter

8 *Protecting People and the Environment*



## Action Matrix DEGRADED CORNERSTONE

Licensee Response	Regulatory Response	Degraded Cornerstone	Multiple Repetitive Degraded Cornerstone	Unacceptable Performance
All Inputs are Green; Cornerstone Objectives Fully Met	1 or 2 White Inputs (in different cornerstones); Cornerstone Objectives Fully Met	2 White or 1 Yellow Input; Cornerstone Objectives Met w/ Moderate Degradation in Safety Performance	Multiple Yellow Inputs or 1 Red Input; Cornerstone Objectives Met w/ Significant Degradation in Safety Performance	Overall Unacceptable Performance; Plants not permitted to Operate w/in this Column; Unacceptable Margin to Safety

- Pending satisfactory completion of Supplemental Inspection IP-95002

9

*Protecting People and the Environment*



## Pilgrim- 95002 Supplemental Inspection – Objectives

Determine if:

- the root and contributing causes of the performance issues were understood;
- the extent of condition and extent of cause were understood; and
- Entergy's completed or planned corrective actions are sufficient to address the root and contributing causes and prevent recurrence.

Inspectors also independently reviewed the extent of condition and extent of cause and performed an independent assessment of the site's safety culture.

10

*Protecting People and the Environment*



## **Unit 2 - 95002 Supplemental Inspection – Results**

- Inspectors identified deficiencies regarding Entergy’s execution of corrective actions, as well as understanding of some of the causes of the issues.
  - Several examples in the root cause evaluations where corrective actions were not completed as intended or were closed prematurely; and
  - For one of the scrams, inspectors determined that Entergy failed to investigate a deficient condition sufficiently to ensure they fully understood all of the causes.

11

*Protecting People and the Environment*



## **Unit 2 - 95002 Supplemental Inspection – Results**

- These specific deficiencies in execution of corrective actions and causal analysis were indicative of the self-identified corrective action plan implementation weakness.
  - Entergy’s actions to improve corrective action implementation have not been effective.
- Inspectors determined that Entergy’s actions did not provide assurance that Entergy understood the causes and had taken or planned adequate corrective actions to address the safety-significant PI.
  - Two parallel White PI inspection findings assigned.

12

*Protecting People and the Environment*



## **Unit 2 - 95002 Supplemental Inspection – Results**

- Pilgrim will remain in the Degraded Cornerstone Column of the Action Matrix until the NRC verifies that Entergy has:
  - Addressed the specific deficiencies in execution of corrective actions;
  - Addressed the deficient cause evaluation; and
  - Taken action to understand why actions intended to address the identified CAP implementation weakness were not effective at ensuring the inspection objectives were satisfied.

13

*Protecting People and the Environment*



## **2015 Special Inspection Status**

- NRC Region I initiated a Special Inspection on February 2 following the partial loss of offsite power and unplanned reactor scram which occurred during a severe winter storm on January 27.
- The inspection is still in progress and should complete within the next week.
- The Special Inspection report will be issued and made public near the end of April.

14

*Protecting People and the Environment*



## ***Licensee Response and Remarks***

**John Dent  
Site Vice President  
Entergy Pilgrim, LLC**

15

*Protecting People and the Environment*



## ***Pilgrim 2014 Annual Assessment Summary***

- **While Entergy operated Pilgrim in a manner that preserved public health and safety, performance deficiencies were identified that led to the plant being in the degraded cornerstone column of the action matrix.**
- **The resulting action is increased oversight including a 95002 supplemental inspection.**

16

*Protecting People and the Environment*





## Contacting the NRC

- **Public Affairs (Region I office)**
  - (610) 337-5330/5331
- **Report a safety concern**
  - (800) 695-7403
  - Allegation@nrc.gov
- **General information or questions**
  - www.nrc.gov
  - Select “What We Do” for Public Affairs

17

*Protecting People and the Environment*



## Reference Sources

- **Reactor Oversight Process**
  - <http://www.nrc.gov/NRR/OVERSIGHT/ASSESS/index.html>
- **Public Electronic Reading Room**
  - <http://www.nrc.gov/reading-rm.html>
- **Public Document Room**
  - 800-397-4209

18

*Protecting People and the Environment*



## **Pilgrim Annual Assessment Meeting**

- **Short break**
- **NRC to address public questions**

19

*Protecting People and the Environment*



## **Pilgrim Annual Assessment Meeting**

**Questions**

20

*Protecting People and the Environment*