

SRR-LWDL-2014-00008



<http://earthquake.usgs.gov/earthquakes/dyfi/events/se/022814c/us/index.html>

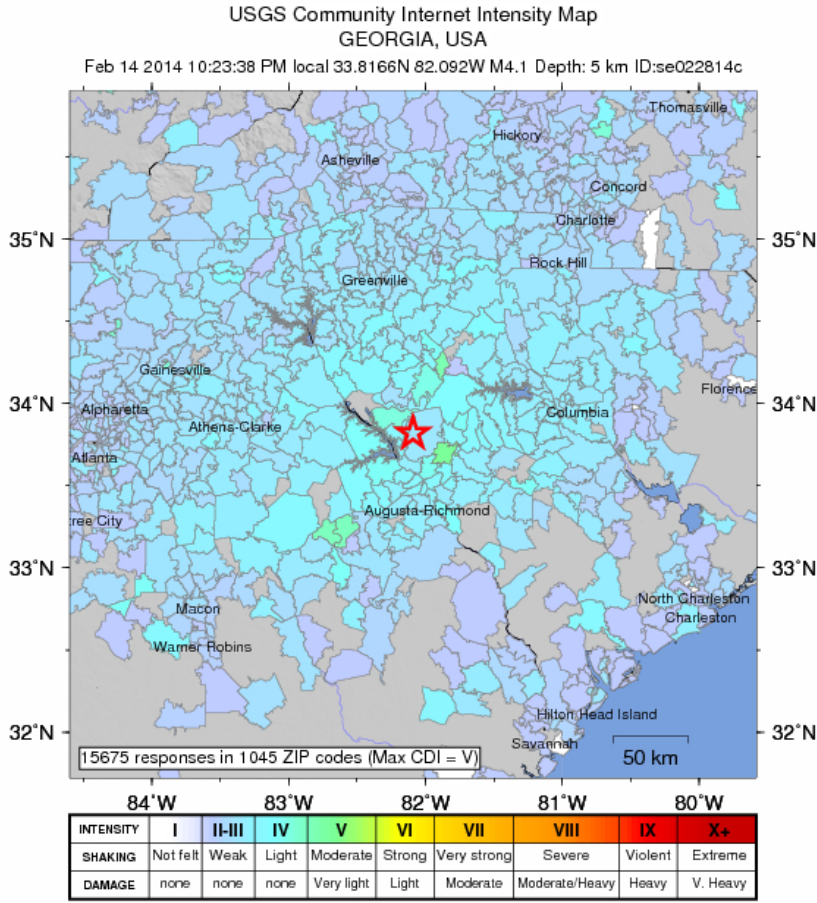
Earthquake Hazards Program

M4.1 – Georgia, USA

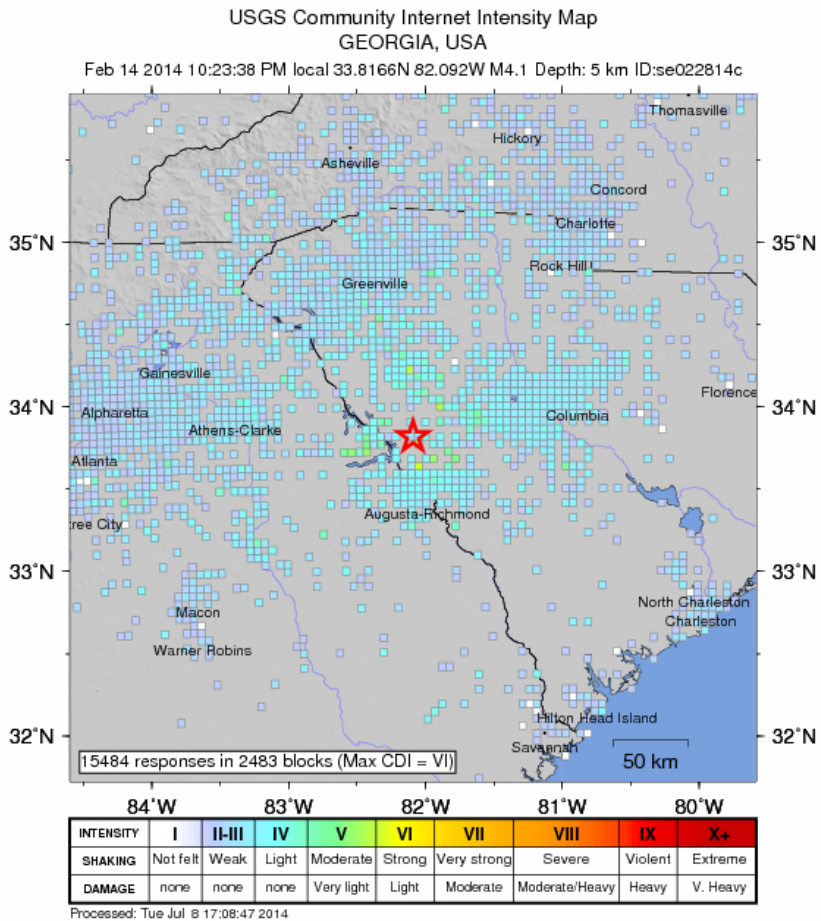
Saturday, February 15, 2014 at 03:23:38 UTC
Friday, February 14, 2014 at 22:23:38 Local



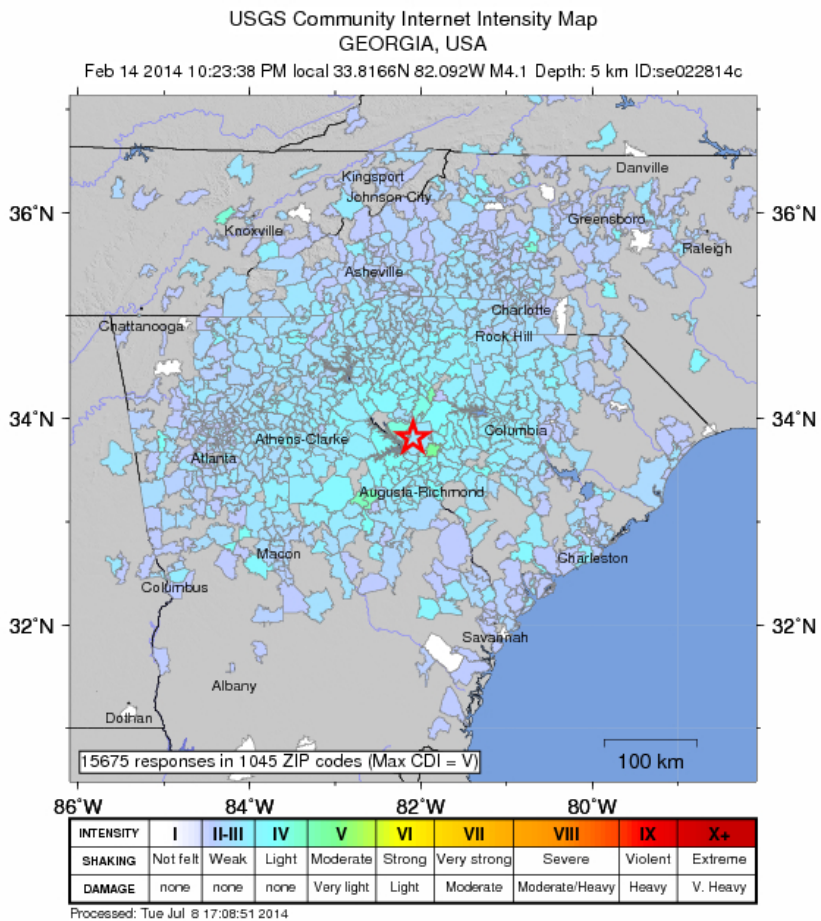
33.82°N 82.09°W
Depth: 5km



City map

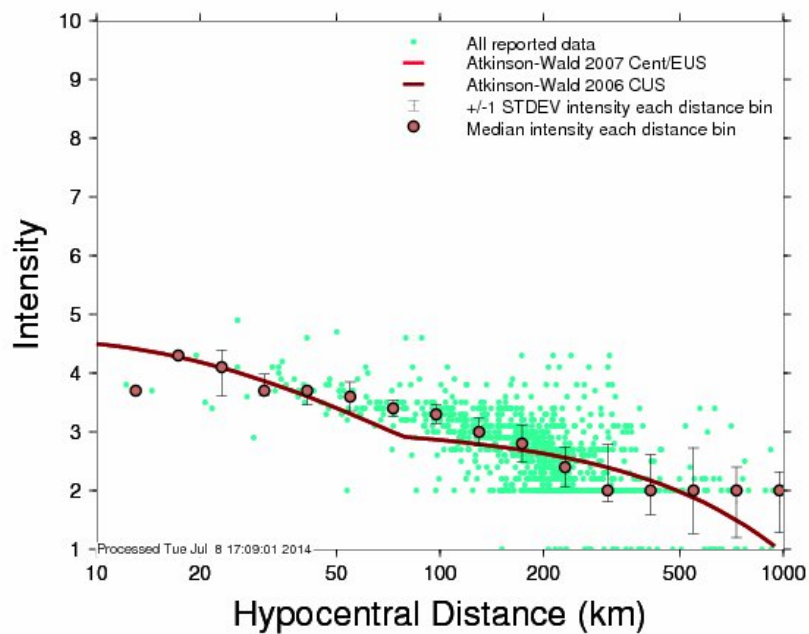


Geocoded Map



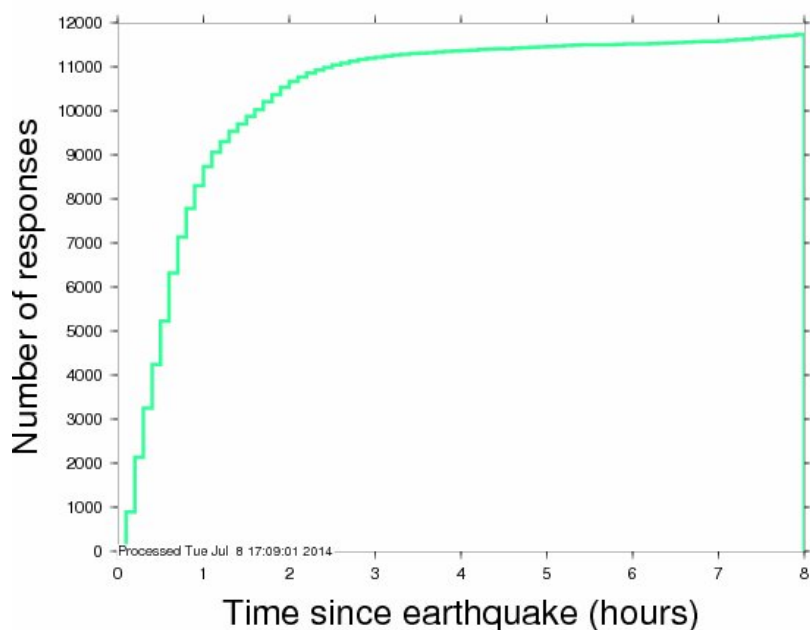
Zoomout Map

Intensity vs. Distance Plot (ID se022814c)



Intensity vs. Distance

Responses vs. Time Plot (ID se022814c)



Responses vs. Time

[Printer Friendly Response Summary](#)

Summary of Responses by Zip

<u>State</u>	<u>ZIP Name</u>	<u>ZIP Code</u>	<u>MMI</u>	<u>Resp.</u>	<u>Distance (km)</u>	<u>Latitude</u>	<u>Longitude</u>
NJ	Haddon Township	08107	1	1	920	39.91°N	75.08°W
NJ	Elmer	08318	2	1	887	39.56°N	75.18°W
NY	Florida	10921	2	1	1077	41.33°N	74.37°W
NY	Brooklyn	11235	2	1	1042	40.58°N	73.95°W
NY	Barryville	12719	2	1	1061	41.49°N	74.92°W
NY	Bainbridge	13733	2	1	1106	42.31°N	75.49°W
NY	Depew	14043	1	1	1050	42.90°N	78.71°W
PA	Ambridge	15003	3	1	771	40.60°N	80.21°W
PA	Erie	16509	2	1	932	42.06°N	80.04°W
PA	Philadelphia	19104	3	1	917	39.96°N	75.20°W
VA	Amissville	20106	1	1	652	38.68°N	78.01°W
VA	Lovettsville	20180	1	1	724	39.27°N	77.64°W
MD	Bowie	20715	2	1	748	38.99°N	76.74°W
MD	Silver Spring	20902	1	1	735	39.04°N	77.04°W
MD	Severn	21144	2	1	762	39.12°N	76.68°W
MD	Rosedale	21237	2	1	791	39.34°N	76.50°W
MD	Frostburg	21532	3	1	705	39.65°N	78.95°W
MD	Easton	21601	1	1	772	38.79°N	76.08°W
VA	Alexandria	22303	2	1	712	38.79°N	77.08°W
VA	Gore	22637	2	1	690	39.26°N	78.35°W
VA	Charlottesville	22901	3	1	571	38.09°N	78.55°W
VA	Fishersville	22939	2	1	551	38.09°N	78.98°W
VA	Glen Allen	23060	2	1	593	37.66°N	77.53°W
VA	Powhatan	23139	2	1	559	37.55°N	77.93°W
VA	Wake	23176	2	3	660	37.56°N	76.43°W
VA	Chesapeake	23320	1	1	625	36.75°N	76.22°W

<u>State</u>	<u>ZIP Name</u>	<u>ZIP Code</u>	<u>MMI</u>	<u>Resp.</u>	<u>Distance (km)</u>	<u>Latitude</u>	<u>Longitude</u>
VA	Norfolk	23502	1	1	632	36.86°N	76.21°W
VA	Norfolk	23508	2	1	626	36.89°N	76.31°W
VA	Norfolk	23518	1	1	635	36.91°N	76.21°W
VA	Yorktown	23693	3	1	630	37.12°N	76.44°W
VA	Bracey	23919	2	2	474	36.59°N	78.13°W
VA	Blacksburg	24060	2	1	410	37.26°N	80.42°W
VA	Christiansburg	24073	2	1	397	37.13°N	80.42°W
VA	Dublin	24084	3	1	389	37.13°N	80.69°W
VA	Martinsville	24112	3	1	381	36.73°N	79.86°W
VA	Bristol	24201	3	1	310	36.61°N	82.17°W
VA	Bristol	24202	2	1	316	36.67°N	82.19°W
VA	Appalachia	24216	2	1	352	36.94°N	82.79°W
VA	Big Stone Gap	24219	2	1	341	36.84°N	82.76°W
VA	Galax	24333	3	1	330	36.64°N	80.93°W
VA	Mouth of Wilson	24363	3	1	316	36.61°N	81.40°W
VA	Staunton	24401	2	1	549	38.13°N	79.09°W
VA	Lynchburg	24504	2	1	480	37.36°N	79.05°W
VA	Danville	24541	1	1	387	36.59°N	79.51°W
WV	Charleston	25314	2	1	497	38.29°N	81.67°W
WV	Berkeley Springs	25411	2	1	724	39.56°N	78.22°W
WV	Parkersburg	26104	1	1	608	39.28°N	81.48°W
WV	Fairmont	26554	2	1	651	39.47°N	80.11°W
NC	Advance	27006	2	2	280	35.94°N	80.44°W
NC	Clemmons	27012	2	6	288	36.00°N	80.38°W
NC	Cleveland	27013	4	1	250	35.76°N	80.70°W
NC	East Bend	27018	1	1	300	36.20°N	80.52°W
NC	Hamptonville	27020	2	1	279	36.11°N	80.81°W
NC	King	27021	2	1	320	36.32°N	80.34°W
NC	Madison	27025	2	2	343	36.38°N	79.97°W
NC	Mocksville	27028	3	3	271	35.92°N	80.57°W
NC	Mount Airy	27030	2	3	325	36.49°N	80.63°W
NC	Pilot Mountain	27041	2	1	323	36.42°N	80.48°W
NC	Walkertown	27051	2	1	316	36.19°N	80.16°W
NC	Westfield	27053	2	1	334	36.47°N	80.35°W
NC	Winston Salem	27101	2	2	307	36.11°N	80.20°W
NC	Winston Salem	27104	2	8	300	36.09°N	80.32°W
NC	Winston Salem	27106	2	3	304	36.14°N	80.32°W
NC	Winston Salem	27107	2	7	300	36.01°N	80.18°W
NC	Winston Salem	27127	2	4	295	36.02°N	80.28°W
NC	Asheboro	27203	2	5	299	35.73°N	79.79°W
NC	Asheboro	27205	2	1	288	35.64°N	79.85°W
NC	Browns Summit	27214	3	1	344	36.21°N	79.69°W
NC	Burlington	27217	3	2	361	36.20°N	79.39°W
NC	Candor	27229	4	1	263	35.25°N	79.80°W
NC	Climax	27233	2	2	317	35.89°N	79.70°W
NC	Denton	27239	2	3	270	35.60°N	80.09°W
NC	Franklinville	27248	4	1	309	35.79°N	79.71°W
NC	Graham	27253	3	1	346	35.96°N	79.34°W

<u>State</u>	<u>ZIP Name</u>	<u>ZIP Code</u>	<u>MMI</u>	<u>Resp.</u>	<u>Distance (km)</u>	<u>Latitude</u>	<u>Longitude</u>
NC	High Point	27262	2	2	303	35.96°N	80.04°W
NC	High Point	27265	2	6	307	36.01°N	80.03°W
NC	Hillsborough	27278	2	2	372	36.09°N	79.08°W
NC	Kernersville	27284	2	6	314	36.12°N	80.08°W
NC	Lexington	27292	2	2	274	35.74°N	80.21°W
NC	Lexington	27295	2	12	279	35.87°N	80.31°W
NC	Liberty	27298	2	2	325	35.89°N	79.57°W
NC	Linwood	27299	2	3	265	35.75°N	80.39°W
NC	MC Leansville	27301	3	1	338	36.12°N	79.67°W
NC	Mebane	27302	2	1	364	36.13°N	79.26°W
NC	Pittsboro	27312	2	2	341	35.75°N	79.19°W
NC	Randleman	27317	2	1	306	35.84°N	79.80°W
NC	Sanford	27330	2	1	326	35.52°N	79.19°W
NC	Sanford	27332	2	1	321	35.38°N	79.14°W
NC	Siler City	27344	1	1	323	35.73°N	79.43°W
NC	Snow Camp	27349	2	2	336	35.90°N	79.41°W
NC	Star	27356	2	2	276	35.44°N	79.81°W
NC	Stokesdale	27357	2	2	333	36.27°N	79.98°W
NC	Trinity	27370	3	2	293	35.81°N	79.99°W
NC	Troy	27371	3	3	263	35.41°N	79.96°W
NC	Greensboro	27401	1	1	328	36.07°N	79.77°W
NC	Greensboro	27403	4	2	324	36.06°N	79.82°W
NC	Greensboro	27405	2	1	333	36.11°N	79.74°W
NC	Greensboro	27406	2	2	322	36.00°N	79.77°W
NC	Greensboro	27407	2	1	316	36.01°N	79.88°W
NC	Greensboro	27408	2	3	328	36.10°N	79.81°W
NC	Greensboro	27410	2	5	325	36.12°N	79.89°W
NC	Apex	27502	2	2	359	35.72°N	78.91°W
NC	Carrboro	27510	3	2	360	35.91°N	79.08°W
NC	Cary	27511	3	1	371	35.76°N	78.78°W
NC	Cary	27513	2	1	373	35.80°N	78.80°W
NC	Chapel Hill	27516	2	3	355	35.92°N	79.15°W
NC	Chapel Hill	27517	3	1	359	35.85°N	79.03°W
NC	Cary	27519	2	1	367	35.80°N	78.88°W
NC	Coats	27521	2	1	361	35.41°N	78.66°W
NC	Goldsboro	27530	2	1	406	35.37°N	78.08°W
NC	Henderson	27536	2	1	436	36.32°N	78.41°W
NC	Apex	27539	2	1	365	35.68°N	78.81°W
NC	Louisburg	27549	2	3	434	36.11°N	78.24°W
NC	New Hill	27562	3	3	350	35.65°N	78.97°W
NC	Rougemont	27572	2	1	398	36.25°N	78.88°W
NC	Raleigh	27605	2	1	383	35.79°N	78.65°W
NC	Raleigh	27607	2	1	379	35.80°N	78.71°W
NC	Raleigh	27610	2	5	388	35.74°N	78.55°W
NC	Raleigh	27613	2	2	387	35.92°N	78.71°W
NC	Durham	27701	1	1	379	36.00°N	78.90°W
NC	Durham	27705	2	1	375	36.03°N	78.98°W
NC	Greenville	27834	1	1	476	35.66°N	77.39°W

<u>State</u>	<u>ZIP Name</u>	<u>ZIP Code</u>	<u>MMI</u>	<u>Resp.</u>	<u>Distance (km)</u>	<u>Latitude</u>	<u>Longitude</u>
NC	Williamston	27892	2	1	510	35.82°N	77.07°W
NC	Hertford	27944	2	1	579	36.11°N	76.39°W
NC	Albemarle	28001	2	1	241	35.34°N	80.20°W
NC	Alexis	28006	3	3	198	35.41°N	81.09°W
NC	Belmont	28012	3	9	182	35.21°N	81.04°W
NC	Bessemer City	28016	3	8	182	35.32°N	81.29°W
NC	Bostic	28018	2	6	187	35.49°N	81.80°W
NC	Casar	28020	3	2	194	35.53°N	81.64°W
NC	Cherryville	28021	3	7	186	35.40°N	81.41°W
NC	China Grove	28023	2	1	237	35.57°N	80.60°W
NC	Concord	28025	3	4	225	35.38°N	80.53°W
NC	Concord	28027	3	18	219	35.41°N	80.68°W
NC	Cornelius	28031	3	4	214	35.47°N	80.89°W
NC	Cramerton	28032	2	1	182	35.23°N	81.08°W
NC	Crouse	28033	2	1	191	35.42°N	81.33°W
NC	Dallas	28034	3	37	190	35.35°N	81.18°W
NC	Davidson	28036	3	4	220	35.49°N	80.79°W
NC	Denver	28037	2	7	211	35.51°N	81.02°W
NC	Ellenboro	28040	3	8	177	35.39°N	81.75°W
NC	Forest City	28043	3	15	166	35.30°N	81.87°W
NC	Gastonia	28052	2	9	174	35.22°N	81.23°W
NC	Gastonia	28054	3	25	182	35.26°N	81.15°W
NC	Gastonia	28056	2	22	179	35.22°N	81.12°W
NC	Grover	28073	3	4	163	35.20°N	81.48°W
NC	Harrisburg	28075	3	3	211	35.30°N	80.64°W
NC	Huntersville	28078	3	23	209	35.40°N	80.86°W
NC	Indian Trail	28079	2	5	198	35.11°N	80.60°W
NC	Iron Station	28080	2	5	202	35.45°N	81.11°W
NC	Kannapolis	28081	2	6	227	35.50°N	80.67°W
NC	Kannapolis	28083	2	5	231	35.49°N	80.58°W
NC	Kings Mountain	28086	3	32	171	35.24°N	81.37°W
NC	Lawndale	28090	3	3	188	35.46°N	81.56°W
NC	Lincolnton	28092	3	20	200	35.48°N	81.25°W
NC	Marshville	28103	1	1	207	35.01°N	80.36°W
NC	Matthews	28104	2	10	188	35.06°N	80.69°W
NC	Matthews	28105	3	35	191	35.12°N	80.72°W
NC	Midland	28107	3	2	214	35.25°N	80.52°W
NC	Monroe	28110	2	3	199	35.07°N	80.53°W
NC	Monroe	28112	3	3	186	34.89°N	80.54°W
NC	Mooresboro	28114	3	12	160	35.23°N	81.74°W
NC	Mooresville	28115	2	17	230	35.58°N	80.77°W
NC	Mooresville	28117	2	9	223	35.57°N	80.90°W
NC	Mount Holly	28120	2	6	194	35.33°N	81.03°W
NC	Mount Ulla	28125	4	1	240	35.66°N	80.70°W
NC	Pineville	28134	3	4	178	35.08°N	80.89°W
NC	Polkton	28135	3	1	219	35.00°N	80.19°W
NC	Rockwell	28138	2	2	242	35.52°N	80.44°W
NC	Rutherfordton	28139	3	17	170	35.35°N	82.00°W

<u>State</u>	<u>ZIP Name</u>	<u>ZIP Code</u>	<u>MMI</u>	<u>Resp.</u>	<u>Distance (km)</u>	<u>Latitude</u>	<u>Longitude</u>
NC	Salisbury	28144	3	5	257	35.71°N	80.46°W
NC	Salisbury	28147	3	1	249	35.68°N	80.56°W
NC	Shelby	28150	3	29	176	35.35°N	81.58°W
NC	Shelby	28152	3	13	164	35.24°N	81.59°W
NC	Spindale	28160	2	1	172	35.36°N	81.92°W
NC	Stanley	28164	2	6	199	35.39°N	81.04°W
NC	Troutman	28166	2	2	234	35.68°N	80.88°W
NC	Union Mills	28167	3	2	186	35.50°N	81.97°W
NC	Vale	28168	3	5	202	35.55°N	81.42°W
NC	Waxhaw	28173	3	54	175	34.92°N	80.73°W
NC	Charlotte	28202	3	5	194	35.23°N	80.84°W
NC	Charlotte	28203	3	5	191	35.21°N	80.86°W
NC	Charlotte	28204	3	5	193	35.21°N	80.83°W
NC	Charlotte	28205	3	72	196	35.22°N	80.79°W
NC	Charlotte	28206	3	3	197	35.26°N	80.82°W
NC	Charlotte	28207	2	4	192	35.19°N	80.83°W
NC	Charlotte	28208	3	1	190	35.23°N	80.91°W
NC	Charlotte	28209	3	13	189	35.18°N	80.85°W
NC	Charlotte	28210	3	8	184	35.13°N	80.86°W
NC	Charlotte	28211	2	8	191	35.17°N	80.80°W
NC	Charlotte	28212	3	7	196	35.19°N	80.75°W
NC	Charlotte	28213	2	11	205	35.28°N	80.73°W
NC	Charlotte	28214	3	10	191	35.27°N	80.97°W
NC	Charlotte	28215	3	4	204	35.25°N	80.70°W
NC	Charlotte	28216	2	8	199	35.31°N	80.89°W
NC	Charlotte	28217	3	4	185	35.17°N	80.91°W
NC	Charlotte	28226	3	10	184	35.11°N	80.82°W
NC	Charlotte	28227	2	22	201	35.19°N	80.65°W
NC	Charlotte	28262	2	4	208	35.33°N	80.74°W
NC	Charlotte	28269	2	8	206	35.34°N	80.80°W
NC	Charlotte	28270	2	7	188	35.11°N	80.76°W
NC	Charlotte	28273	2	10	179	35.13°N	80.94°W
NC	Charlotte	28277	3	18	180	35.05°N	80.82°W
NC	Charlotte	28278	2	15	176	35.13°N	81.01°W
NC	Fayetteville	28306	3	1	320	34.96°N	78.89°W
NC	Aberdeen	28315	2	1	281	35.12°N	79.46°W
NC	Bladenboro	28320	4	1	316	34.56°N	78.77°W
NC	Hamlet	28345	3	1	251	34.88°N	79.67°W
NC	Rockingham	28379	3	3	244	34.93°N	79.79°W
NC	Wilmington	28403	2	2	391	34.22°N	77.88°W
NC	Wilmington	28405	2	1	393	34.26°N	77.87°W
NC	Carolina Beach	28428	2	1	387	34.04°N	77.91°W
NC	Calabash	28467	1	1	324	33.92°N	78.59°W
NC	Jacksonville	28540	2	1	435	34.72°N	77.50°W
NC	Seven Springs	28578	2	1	416	35.20°N	77.87°W
NC	Hickory	28601	2	16	228	35.77°N	81.33°W
NC	Hickory	28602	2	40	216	35.68°N	81.38°W
NC	Banner Elk	28604	2	3	262	36.17°N	81.84°W

<u>State</u>	<u>ZIP Name</u>	<u>ZIP Code</u>	<u>MMI</u>	<u>Resp.</u>	<u>Distance (km)</u>	<u>Latitude</u>	<u>Longitude</u>
NC	Boomer	28606	3	2	258	36.05°N	81.31°W
NC	Boone	28607	2	6	268	36.21°N	81.65°W
NC	Catawba	28609	3	6	227	35.68°N	81.05°W
NC	Claremont	28610	2	4	230	35.73°N	81.14°W
NC	Connellys Springs	28612	3	5	203	35.60°N	81.56°W
NC	Conover	28613	2	27	228	35.74°N	81.21°W
NC	Elkin	28621	3	1	294	36.26°N	80.85°W
NC	Ferguson	28624	4	1	263	36.12°N	81.42°W
NC	Statesville	28625	2	1	252	35.86°N	80.89°W
NC	Fleetwood	28626	3	4	279	36.29°N	81.50°W
NC	Granite Falls	28630	2	12	231	35.83°N	81.42°W
NC	Hildebran	28637	2	2	219	35.72°N	81.42°W
NC	Hudson	28638	2	2	232	35.85°N	81.47°W
NC	Lenoir	28645	3	12	244	35.97°N	81.54°W
NC	Maiden	28650	2	2	213	35.57°N	81.15°W
NC	Millers Creek	28651	4	2	282	36.27°N	81.29°W
NC	Moravian Falls	28654	1	1	263	36.06°N	81.14°W
NC	Morganton	28655	3	18	217	35.75°N	81.74°W
NC	Newland	28657	2	4	245	36.03°N	81.94°W
NC	Newton	28658	2	24	216	35.64°N	81.24°W
NC	North Wilkesboro	28659	2	8	270	36.10°N	81.06°W
NC	Purlear	28665	3	1	273	36.21°N	81.37°W
NC	Sherrills Ford	28673	2	7	222	35.61°N	81.00°W
NC	State Road	28676	2	1	300	36.33°N	80.86°W
NC	Statesville	28677	2	8	238	35.74°N	80.92°W
NC	Stony Point	28678	2	1	243	35.84°N	81.06°W
NC	Taylorsville	28681	2	3	246	35.92°N	81.22°W
NC	Terrell	28682	3	2	221	35.58°N	80.96°W
NC	Valdese	28690	2	3	217	35.73°N	81.58°W
NC	Vilas	28692	3	2	274	36.28°N	81.79°W
NC	West Jefferson	28694	3	1	287	36.36°N	81.47°W
NC	Wilkesboro	28697	3	5	270	36.13°N	81.17°W
NC	Alexander	28701	2	1	215	35.71°N	82.64°W
NC	Almond	28702	3	1	224	35.39°N	83.63°W
NC	Arden	28704	2	9	188	35.46°N	82.58°W
NC	Bakersville	28705	2	1	248	36.05°N	82.19°W
NC	Barnardsville	28709	3	1	217	35.76°N	82.41°W
NC	Black Mountain	28711	2	7	199	35.60°N	82.30°W
NC	Brevard	28712	3	29	166	35.21°N	82.76°W
NC	Bryson City	28713	3	10	226	35.45°N	83.57°W
NC	Burnsville	28714	2	3	230	35.89°N	82.31°W
NC	Candler	28715	2	6	197	35.52°N	82.72°W
NC	Canton	28716	2	3	193	35.44°N	82.86°W
NC	Cashiers	28717	3	2	167	35.08°N	83.10°W
NC	Cedar Mountain	28718	4	2	155	35.15°N	82.61°W
NC	Clyde	28721	2	4	219	35.66°N	82.95°W
NC	Columbus	28722	2	12	155	35.22°N	82.12°W
NC	Cullowhee	28723	2	19	191	35.32°N	83.10°W

<u>State</u>	<u>ZIP Name</u>	<u>ZIP Code</u>	<u>MMI</u>	<u>Resp.</u>	<u>Distance (km)</u>	<u>Latitude</u>	<u>Longitude</u>
NC	Etowah	28729	3	5	173	35.32°N	82.60°W
NC	Fairview	28730	2	4	191	35.53°N	82.38°W
NC	Flat Rock	28731	3	4	165	35.29°N	82.39°W
NC	Fletcher	28732	2	8	183	35.44°N	82.47°W
NC	Franklin	28734	3	31	194	35.18°N	83.43°W
NC	Glenville	28736	3	2	176	35.18°N	83.09°W
NC	Hendersonville	28739	3	34	166	35.27°N	82.54°W
NC	Highlands	28741	3	6	172	35.06°N	83.22°W
NC	Horse Shoe	28742	3	3	182	35.40°N	82.65°W
NC	Lake Lure	28746	3	5	182	35.46°N	82.19°W
NC	Lake Toxaway	28747	2	3	165	35.14°N	82.93°W
NC	Leicester	28748	3	3	212	35.65°N	82.75°W
NC	Maggie Valley	28751	3	5	210	35.51°N	83.11°W
NC	Marion	28752	2	8	210	35.71°N	82.03°W
NC	Marshall	28753	2	4	234	35.87°N	82.69°W
NC	Mars Hill	28754	2	1	231	35.88°N	82.51°W
NC	Mill Spring	28756	2	3	168	35.34°N	82.17°W
NC	Mills River	28759	2	1	178	35.37°N	82.60°W
NC	Nebo	28761	2	1	208	35.69°N	81.91°W
NC	Old Fort	28762	3	5	201	35.63°N	82.19°W
NC	Otto	28763	3	6	181	35.04°N	83.41°W
NC	Penrose	28766	3	3	167	35.26°N	82.62°W
NC	Pisgah Forest	28768	2	15	171	35.28°N	82.68°W
NC	Rosman	28772	3	3	161	35.13°N	82.85°W
NC	Saluda	28773	3	3	160	35.25°N	82.32°W
NC	Sapphire	28774	2	3	164	35.09°N	83.00°W
NC	Scaly Mountain	28775	3	2	174	35.02°N	83.32°W
NC	Spruce Pine	28777	3	5	231	35.90°N	82.07°W
NC	Swannanoa	28778	2	3	201	35.62°N	82.41°W
NC	Sylva	28779	3	20	199	35.36°N	83.20°W
NC	Tryon	28782	2	17	156	35.23°N	82.20°W
NC	Tuckasegee	28783	3	1	179	35.24°N	83.02°W
NC	Waynesville	28786	2	17	200	35.46°N	82.99°W
NC	Weaverville	28787	2	9	215	35.73°N	82.52°W
NC	Whittier	28789	2	4	209	35.43°N	83.28°W
NC	Zirconia	28790	2	1	157	35.20°N	82.48°W
NC	Hendersonville	28791	2	7	175	35.36°N	82.51°W
NC	Hendersonville	28792	2	11	176	35.39°N	82.37°W
NC	Asheville	28801	2	4	201	35.59°N	82.56°W
NC	Asheville	28803	3	6	194	35.53°N	82.52°W
NC	Asheville	28804	2	6	207	35.65°N	82.56°W
NC	Asheville	28805	2	3	203	35.62°N	82.48°W
NC	Asheville	28806	3	20	200	35.57°N	82.61°W
NC	Andrews	28901	2	9	220	35.20°N	83.81°W
NC	Hayesville	28904	3	5	204	35.06°N	83.73°W
NC	Murphy	28906	3	11	236	35.12°N	84.13°W
SC	Batesburg	29006	4	29	51	33.91°N	81.55°W
SC	Bethune	29009	3	4	172	34.44°N	80.38°W

<u>State</u>	<u>ZIP Name</u>	<u>ZIP Code</u>	<u>MMI</u>	<u>Resp.</u>	<u>Distance (km)</u>	<u>Latitude</u>	<u>Longitude</u>
SC	Bishopville	29010	3	3	174	34.21°N	80.27°W
SC	Blackstock	29014	3	7	123	34.59°N	81.12°W
SC	Blair	29015	3	2	98	34.44°N	81.34°W
SC	Blythewood	29016	3	126	110	34.20°N	81.00°W
SC	Bowman	29018	3	3	144	33.34°N	80.64°W
SC	Camden	29020	3	55	148	34.31°N	80.59°W
SC	Cameron	29030	3	1	136	33.58°N	80.65°W
SC	Carlisle	29031	3	1	106	34.60°N	81.42°W
SC	Cassatt	29032	4	2	160	34.35°N	80.48°W
SC	Cayce	29033	3	40	96	33.96°N	81.06°W
SC	Chapin	29036	3	93	79	34.15°N	81.33°W
SC	Chappells	29037	5	2	50	34.23°N	81.88°W
SC	Cope	29038	3	4	114	33.37°N	80.98°W
SC	Cordova	29039	3	6	118	33.42°N	80.91°W
SC	Dalzell	29040	2	2	153	34.03°N	80.45°W
SC	Denmark	29042	3	1	102	33.33°N	81.15°W
SC	Eastover	29044	3	12	130	33.92°N	80.69°W
SC	Elgin	29045	3	90	124	34.19°N	80.82°W
SC	Elloree	29047	3	1	144	33.52°N	80.58°W
SC	Eutawville	29048	2	1	173	33.38°N	80.30°W
SC	Gaston	29053	3	43	91	33.82°N	81.11°W
SC	Gilbert	29054	3	67	67	33.93°N	81.38°W
SC	Great Falls	29055	3	5	134	34.55°N	80.93°W
SC	Heath Springs	29058	3	7	148	34.55°N	80.75°W
SC	Hopkins	29061	4	27	115	33.88°N	80.85°W
SC	Irmo	29063	3	234	89	34.14°N	81.20°W
SC	Jenkinsville	29065	3	4	90	34.28°N	81.29°W
SC	Kershaw	29067	3	9	165	34.55°N	80.53°W
SC	Leesville	29070	4	57	61	33.89°N	81.44°W
SC	Lexington	29072	3	521	78	33.99°N	81.27°W
SC	Lexington	29073	3	268	79	33.89°N	81.24°W
SC	Little Mountain	29075	3	69	78	34.20°N	81.38°W
SC	Lugoff	29078	3	59	134	34.19°N	80.70°W
SC	MC Bee	29101	2	3	185	34.49°N	80.25°W
SC	Manning	29102	3	5	177	33.64°N	80.19°W
SC	Monetta	29105	4	2	47	33.79°N	81.58°W
SC	Neeses	29107	4	5	96	33.53°N	81.12°W
SC	Newberry	29108	3	51	68	34.30°N	81.63°W
SC	North	29112	3	11	95	33.62°N	81.09°W
SC	Orangeburg	29115	3	13	121	33.48°N	80.85°W
SC	Orangeburg	29118	3	9	114	33.57°N	80.89°W
SC	Pelion	29123	3	39	77	33.77°N	81.26°W
SC	Pinewood	29125	3	41	151	33.72°N	80.46°W
SC	Pomaria	29126	3	10	83	34.32°N	81.42°W
SC	Prosperity	29127	4	35	66	34.18°N	81.51°W
SC	Rembert	29128	2	2	146	34.09°N	80.54°W
SC	Ridge Spring	29129	4	9	40	33.82°N	81.66°W
SC	Ridgeway	29130	3	20	124	34.33°N	80.89°W

<u>State</u>	<u>ZIP Name</u>	<u>ZIP Code</u>	<u>MMI</u>	<u>Resp.</u>	<u>Distance (km)</u>	<u>Latitude</u>	<u>Longitude</u>
SC	Rowesville	29133	2	6	129	33.38°N	80.80°W
SC	Saint Matthews	29135	3	14	116	33.71°N	80.84°W
SC	Saluda	29138	4	50	37	34.04°N	81.79°W
SC	Santee	29142	2	1	150	33.46°N	80.53°W
SC	Silverstreet	29145	2	3	53	34.22°N	81.77°W
SC	Springfield	29146	4	1	83	33.50°N	81.28°W
SC	Sumter	29150	2	3	161	33.87°N	80.35°W
SC	Shaw A F B	29152	1	1	151	33.98°N	80.47°W
SC	Sumter	29153	2	10	165	33.97°N	80.31°W
SC	Sumter	29154	2	4	153	33.88°N	80.43°W
SC	Swansea	29160	3	12	93	33.73°N	81.09°W
SC	Wagener	29164	3	8	64	33.66°N	81.42°W
SC	Ward	29166	4	5	33	33.89°N	81.74°W
SC	Wedgfield	29168	2	1	142	33.86°N	80.55°W
SC	West Columbia	29169	3	208	94	34.00°N	81.10°W
SC	West Columbia	29170	3	69	88	33.94°N	81.15°W
SC	West Columbia	29172	4	44	95	33.91°N	81.07°W
SC	Whitmire	29178	4	5	87	34.47°N	81.57°W
SC	Winnsboro	29180	3	42	110	34.38°N	81.10°W
SC	Columbia	29201	3	99	100	33.99°N	81.03°W
SC	Columbia	29203	3	60	102	34.10°N	81.05°W
SC	Columbia	29204	3	70	103	34.03°N	81.00°W
SC	Columbia	29205	3	675	103	33.99°N	81.00°W
SC	Columbia	29206	3	65	107	34.02°N	80.95°W
SC	Columbia	29207	3	1	108	34.01°N	80.94°W
SC	Columbia	29208	4	2	100	34.00°N	81.03°W
SC	Columbia	29209	3	91	107	33.95°N	80.94°W
SC	Columbia	29210	3	85	94	34.04°N	81.11°W
SC	Columbia	29212	3	141	90	34.08°N	81.17°W
SC	Columbia	29223	3	105	118	34.06°N	80.84°W
SC	Columbia	29229	3	90	116	34.14°N	80.89°W
SC	Spartanburg	29301	3	24	124	34.94°N	82.01°W
SC	Spartanburg	29302	3	64	121	34.89°N	81.84°W
SC	Spartanburg	29303	3	16	131	34.99°N	81.97°W
SC	Spartanburg	29306	2	9	120	34.90°N	81.92°W
SC	Spartanburg	29307	3	25	131	34.98°N	81.83°W
SC	Boiling Springs	29316	3	40	136	35.04°N	81.98°W
SC	Buffalo	29321	3	3	105	34.72°N	81.74°W
SC	Campobello	29322	3	18	144	35.12°N	82.14°W
SC	Chesnee	29323	3	15	146	35.13°N	81.91°W
SC	Clinton	29325	4	28	78	34.49°N	81.83°W
SC	Cowpens	29330	2	5	139	35.05°N	81.80°W
SC	Cross Hill	29332	4	12	52	34.28°N	81.98°W
SC	Duncan	29334	3	30	120	34.90°N	82.12°W
SC	Enoree	29335	3	7	95	34.66°N	81.90°W
SC	Gaffney	29340	3	21	137	34.98°N	81.59°W
SC	Gaffney	29341	3	14	148	35.12°N	81.71°W
SC	Inman	29349	3	24	139	35.07°N	82.07°W

<u>State</u>	<u>ZIP Name</u>	<u>ZIP Code</u>	<u>MMI</u>	<u>Resp.</u>	<u>Distance (km)</u>	<u>Latitude</u>	<u>Longitude</u>
SC	Joanna	29351	3	11	68	34.39°N	81.82°W
SC	Jonesville	29353	4	5	119	34.83°N	81.65°W
SC	Landrum	29356	3	9	148	35.14°N	82.26°W
SC	Laurens	29360	4	47	75	34.49°N	82.04°W
SC	Lyman	29365	3	7	129	34.98°N	82.17°W
SC	Moore	29369	3	27	116	34.86°N	82.02°W
SC	Mountville	29370	4	1	60	34.35°N	81.96°W
SC	Pacolet	29372	3	8	126	34.91°N	81.71°W
SC	Pauline	29374	4	5	110	34.79°N	81.85°W
SC	Roebuck	29376	3	10	111	34.82°N	81.95°W
SC	Union	29379	3	27	105	34.68°N	81.62°W
SC	Waterloo	29384	3	9	58	34.34°N	82.08°W
SC	Wellford	29385	2	13	128	34.97°N	82.10°W
SC	Woodruff	29388	3	26	105	34.76°N	82.04°W
SC	Charleston	29401	3	11	231	32.78°N	79.94°W
SC	Charleston	29403	3	8	229	32.80°N	79.95°W
SC	Charleston AFB	29404	3	1	215	32.90°N	80.05°W
SC	North Charleston	29405	2	2	224	32.85°N	79.98°W
SC	Charleston	29406	2	6	215	32.93°N	80.03°W
SC	Charleston	29407	2	6	225	32.80°N	80.00°W
SC	North Charleston	29410	2	1	219	32.91°N	80.00°W
SC	Charleston	29412	2	13	234	32.71°N	79.95°W
SC	Charleston	29414	2	5	213	32.83°N	80.12°W
SC	North Charleston	29418	1	1	216	32.87°N	80.06°W
SC	Bonneau	29431	3	1	215	33.28°N	79.87°W
SC	Branchville	29432	3	2	136	33.25°N	80.79°W
SC	Edisto Island	29438	2	2	215	32.57°N	80.32°W
SC	Georgetown	29440	3	10	260	33.39°N	79.33°W
SC	Goose Creek	29445	2	6	215	33.00°N	79.99°W
SC	Green Pond	29446	2	1	195	32.65°N	80.52°W
SC	Hollywood	29449	2	1	209	32.70°N	80.28°W
SC	Isle of Palms	29451	2	1	245	32.82°N	79.74°W
SC	Johns Island	29455	3	14	227	32.64°N	80.10°W
SC	Ladson	29456	3	1	205	32.99°N	80.11°W
SC	Moncks Corner	29461	2	7	207	33.16°N	80.01°W
SC	Mount Pleasant	29464	2	34	235	32.82°N	79.86°W
SC	Mount Pleasant	29466	3	10	238	32.88°N	79.79°W
SC	Ravenel	29470	3	1	204	32.82°N	80.24°W
SC	Saint George	29477	2	1	158	33.17°N	80.57°W
SC	Summerville	29483	3	40	194	33.07°N	80.19°W
SC	Summerville	29485	3	4	200	32.95°N	80.20°W
SC	Wadmalaw Island	29487	2	3	219	32.66°N	80.18°W
SC	Walterboro	29488	3	3	165	32.90°N	80.69°W
SC	Charleston	29492	2	7	228	32.92°N	79.88°W
SC	Florence	29501	2	4	214	34.21°N	79.82°W
SC	Florence	29505	1	1	224	34.12°N	79.69°W
SC	Florence	29506	3	1	230	34.21°N	79.64°W
SC	Aynor	29511	2	1	276	33.98°N	79.11°W

<u>State</u>	<u>ZIP Name</u>	<u>ZIP Code</u>	<u>MMI</u>	<u>Resp.</u>	<u>Distance (km)</u>	<u>Latitude</u>	<u>Longitude</u>
SC	Bennettsville	29512	3	5	237	34.63°N	79.71°W
SC	Cheraw	29520	2	2	221	34.66°N	79.92°W
SC	Conway	29526	2	6	288	33.87°N	78.97°W
SC	Conway	29527	2	1	272	33.78°N	79.15°W
SC	Darlington	29532	2	3	213	34.28°N	79.85°W
SC	Effingham	29541	2	1	218	34.07°N	79.75°W
SC	Hartsville	29550	2	7	196	34.40°N	80.08°W
SC	Little River	29566	1	1	318	33.88°N	78.66°W
SC	Myrtle Beach	29575	2	1	289	33.63°N	78.97°W
SC	Murrells Inlet	29576	3	1	283	33.57°N	79.05°W
SC	Myrtle Beach	29577	2	3	295	33.70°N	78.91°W
SC	Myrtle Beach	29579	2	1	293	33.75°N	78.93°W
SC	Patrick	29584	3	1	205	34.60°N	80.08°W
SC	Pawleys Island	29585	2	1	278	33.47°N	79.12°W
SC	Myrtle Beach	29588	3	1	284	33.68°N	79.03°W
SC	Greenville	29601	3	8	117	34.85°N	82.40°W
SC	Greenville	29605	3	41	110	34.78°N	82.38°W
SC	Greenville	29607	3	88	112	34.81°N	82.33°W
SC	Greenville	29609	3	134	124	34.91°N	82.39°W
SC	Greenville	29611	3	21	117	34.83°N	82.46°W
SC	Greenville	29615	3	71	116	34.86°N	82.30°W
SC	Greenville	29617	3	26	126	34.91°N	82.46°W
SC	Abbeville	29620	4	38	50	34.18°N	82.42°W
SC	Anderson	29621	3	67	83	34.44°N	82.61°W
SC	Anderson	29624	3	13	84	34.44°N	82.63°W
SC	Anderson	29625	3	48	103	34.56°N	82.76°W
SC	Anderson	29626	3	102	93	34.46°N	82.75°W
SC	Belton	29627	3	45	85	34.52°N	82.48°W
SC	Calhoun Falls	29628	4	7	57	34.12°N	82.60°W
SC	Central	29630	3	13	121	34.74°N	82.80°W
SC	Clemson	29631	3	93	116	34.68°N	82.82°W
SC	Clemson	29632	3	1	117	34.67°N	82.84°W
SC	Cleveland	29635	4	4	148	35.08°N	82.63°W
SC	Donalds	29638	3	13	65	34.37°N	82.34°W
SC	Due West	29639	3	12	62	34.30°N	82.43°W
SC	Easley	29640	3	14	127	34.89°N	82.58°W
SC	Easley	29642	3	79	115	34.78°N	82.56°W
SC	Fair Play	29643	3	5	114	34.52°N	83.00°W
SC	Fountain Inn	29644	3	46	95	34.67°N	82.19°W
SC	Gray Court	29645	4	26	86	34.59°N	82.13°W
SC	Greenwood	29646	4	138	37	34.15°N	82.14°W
SC	Greenwood	29649	4	91	47	34.24°N	82.14°W
SC	Greer	29650	3	31	120	34.90°N	82.26°W
SC	Greer	29651	3	108	113	34.83°N	82.23°W
SC	Hodges	29653	4	19	55	34.30°N	82.23°W
SC	Honea Path	29654	4	21	76	34.47°N	82.36°W
SC	Iva	29655	4	15	72	34.28°N	82.64°W
SC	Liberty	29657	3	14	118	34.76°N	82.69°W

<u>State</u>	<u>ZIP Name</u>	<u>ZIP Code</u>	<u>MMI</u>	<u>Resp.</u>	<u>Distance (km)</u>	<u>Latitude</u>	<u>Longitude</u>
SC	Long Creek	29658	2	3	151	34.74°N	83.30°W
SC	Marietta	29661	3	6	135	34.98°N	82.54°W
SC	Mauldin	29662	3	26	108	34.78°N	82.31°W
SC	Mountain Rest	29664	2	2	152	34.88°N	83.15°W
SC	Ninety Six	29666	4	27	34	34.12°N	82.00°W
SC	Pelzer	29669	3	19	95	34.64°N	82.41°W
SC	Pendleton	29670	3	13	108	34.64°N	82.72°W
SC	Pickens	29671	3	17	137	34.94°N	82.72°W
SC	Seneca	29672	3	53	129	34.75°N	82.94°W
SC	Piedmont	29673	3	49	105	34.72°N	82.46°W
SC	Salem	29676	3	12	147	34.93°N	82.96°W
SC	Seneca	29678	3	32	119	34.63°N	82.94°W
SC	Simpsonville	29680	3	130	98	34.69°N	82.29°W
SC	Simpsonville	29681	3	112	106	34.77°N	82.22°W
SC	Six Mile	29682	3	13	132	34.84°N	82.85°W
SC	Starr	29684	3	5	85	34.38°N	82.72°W
SC	Sunset	29685	3	8	147	34.99°N	82.85°W
SC	Tamassee	29686	3	1	148	34.90°N	83.04°W
SC	Taylors	29687	3	87	130	34.98°N	82.33°W
SC	Tigerville	29688	3	1	145	35.11°N	82.36°W
SC	Townville	29689	3	5	108	34.54°N	82.88°W
SC	Travelers Rest	29690	3	33	141	35.06°N	82.42°W
SC	Walhalla	29691	3	14	140	34.79°N	83.08°W
SC	Ware Shoals	29692	3	13	67	34.41°N	82.22°W
SC	Westminster	29693	3	14	134	34.66°N	83.14°W
SC	West Union	29696	3	6	134	34.76°N	83.01°W
SC	Williamston	29697	3	44	99	34.63°N	82.55°W
SC	Blacksburg	29702	3	8	155	35.12°N	81.47°W
SC	Catawba	29704	2	1	155	34.83°N	80.92°W
SC	Chester	29706	3	37	127	34.72°N	81.23°W
SC	Fort Mill	29707	3	20	172	34.98°N	80.86°W
SC	Fort Mill	29708	3	46	170	35.05°N	80.99°W
SC	Chesterfield	29709	3	2	209	34.73°N	80.10°W
SC	Clover	29710	3	35	163	35.10°N	81.22°W
SC	Edgemoor	29712	3	2	149	34.80°N	80.98°W
SC	Fort Lawn	29714	3	1	146	34.71°N	80.92°W
SC	Fort Mill	29715	3	44	170	35.01°N	80.93°W
SC	Hickory Grove	29717	3	1	139	34.95°N	81.44°W
SC	Jefferson	29718	3	5	184	34.64°N	80.35°W
SC	Lancaster	29720	3	25	161	34.75°N	80.74°W
SC	MC Connells	29726	2	2	139	34.86°N	81.23°W
SC	Pageland	29728	2	1	187	34.77°N	80.41°W
SC	Richburg	29729	3	2	138	34.68°N	81.00°W
SC	Rock Hill	29730	3	70	154	34.89°N	81.02°W
SC	Rock Hill	29732	3	58	158	34.97°N	81.08°W
SC	Sharon	29742	3	1	133	34.87°N	81.38°W
SC	Smyrna	29743	3	3	148	35.03°N	81.41°W
SC	York	29745	3	32	153	34.99°N	81.22°W

<u>State</u>	<u>ZIP Name</u>	<u>ZIP Code</u>	<u>MMI</u>	<u>Resp.</u>	<u>Distance (km)</u>	<u>Latitude</u>	<u>Longitude</u>
SC	Aiken	29801	3	123	45	33.58°N	81.69°W
SC	Aiken	29803	3	133	54	33.46°N	81.70°W
SC	Aiken	29805	3	8	47	33.66°N	81.62°W
SC	New Ellenton	29809	3	4	58	33.42°N	81.69°W
SC	Barnwell	29812	3	16	96	33.21°N	81.36°W
SC	Blackville	29817	3	9	90	33.37°N	81.29°W
SC	Bradley	29819	3	2	28	34.05°N	82.22°W
SC	Clarks Hill	29821	3	5	21	33.63°N	82.11°W
SC	Edgefield	29824	3	469	8	33.81°N	82.02°W
SC	Fairfax	29827	3	1	126	32.89°N	81.31°W
SC	Gloversville	29828	5	1	41	33.52°N	81.83°W
SC	Graniteville	29829	4	21	34	33.58°N	81.86°W
SC	Jackson	29831	4	7	61	33.31°N	81.82°W
SC	Johnston	29832	4	8	27	33.80°N	81.80°W
SC	MC Cormick	29835	4	25	19	33.91°N	82.26°W
SC	Martin	29836	3	1	99	33.07°N	81.50°W
SC	Modoc	29838	4	13	14	33.72°N	82.19°W
SC	North Augusta	29841	4	70	35	33.53°N	81.94°W
SC	Beech Island	29842	3	4	46	33.44°N	81.87°W
SC	Plum Branch	29845	4	4	12	33.83°N	82.21°W
SC	Trenton	29847	5	2	25	33.70°N	81.86°W
SC	Troy	29848	4	5	20	33.98°N	82.19°W
SC	Warrenville	29851	4	13	42	33.51°N	81.82°W
SC	Williston	29853	3	10	77	33.41°N	81.42°W
SC	Windsor	29856	4	4	65	33.48°N	81.52°W
SC	North Augusta	29860	4	24	25	33.61°N	81.98°W
SC	Beaufort	29902	3	3	206	32.37°N	80.70°W
SC	Beaufort	29906	2	2	197	32.44°N	80.76°W
SC	Ladys Island	29907	2	2	203	32.45°N	80.63°W
SC	Okatie	29909	2	2	201	32.31°N	80.89°W
SC	Bluffton	29910	2	15	209	32.22°N	80.89°W
SC	Daufuskie Island	29915	2	1	220	32.12°N	80.87°W
SC	Saint Helena Island	29920	2	3	215	32.37°N	80.55°W
SC	Hilton Head Island	29926	3	4	216	32.23°N	80.75°W
SC	Hardeeville	29927	2	1	198	32.25°N	81.05°W
SC	Hilton Head Island	29928	2	12	222	32.16°N	80.75°W
SC	Ridgeland	29936	2	2	180	32.51°N	80.94°W
SC	Varnville	29944	2	2	149	32.82°N	81.02°W
SC	Yemassee	29945	4	2	176	32.68°N	80.77°W
GA	Avondale Estates	30002	2	2	201	33.77°N	84.26°W
GA	Alpharetta	30004	3	72	207	34.13°N	84.30°W
GA	Alpharetta	30005	3	27	198	34.09°N	84.22°W
GA	Marietta	30008	2	2	231	33.90°N	84.59°W
GA	Auburn	30011	3	24	162	34.02°N	83.84°W
GA	Conyers	30012	3	13	177	33.72°N	84.00°W
GA	Conyers	30013	3	6	175	33.64°N	83.97°W
GA	Covington	30014	3	33	162	33.58°N	83.82°W
GA	Covington	30016	3	6	173	33.52°N	83.93°W

<u>State</u>	<u>ZIP Name</u>	<u>ZIP Code</u>	<u>MMI</u>	<u>Resp.</u>	<u>Distance (km)</u>	<u>Latitude</u>	<u>Longitude</u>
GA	Grayson	30017	3	16	173	33.89°N	83.96°W
GA	Dacula	30019	3	81	166	33.98°N	83.88°W
GA	Clarkston	30021	2	2	198	33.81°N	84.24°W
GA	Alpharetta	30022	2	30	200	34.03°N	84.25°W
GA	Suwanee	30024	3	74	186	34.06°N	84.09°W
GA	Social Circle	30025	3	11	149	33.66°N	83.70°W
GA	Cumming	30028	3	13	199	34.29°N	84.18°W
GA	Decatur	30030	3	36	203	33.77°N	84.29°W
GA	Decatur	30032	2	8	201	33.74°N	84.26°W
GA	Decatur	30033	3	61	203	33.81°N	84.28°W
GA	Decatur	30034	3	5	200	33.69°N	84.25°W
GA	Decatur	30035	3	1	196	33.73°N	84.21°W
GA	Lithonia	30038	3	8	190	33.67°N	84.14°W
GA	Snellville	30039	3	21	179	33.80°N	84.03°W
GA	Cumming	30040	3	48	197	34.22°N	84.18°W
GA	Cumming	30041	3	75	189	34.20°N	84.09°W
GA	Lawrenceville	30043	3	88	178	34.00°N	84.01°W
GA	Lawrenceville	30044	2	30	183	33.92°N	84.07°W
GA	Lawrenceville	30045	3	59	173	33.94°N	83.96°W
GA	Lilburn	30047	3	24	187	33.87°N	84.11°W
GA	Loganville	30052	3	79	167	33.82°N	83.90°W
GA	Oxford	30054	3	8	166	33.68°N	83.88°W
GA	Mansfield	30055	3	2	157	33.49°N	83.74°W
GA	Newborn	30056	3	3	148	33.49°N	83.65°W
GA	Lithonia	30058	3	4	186	33.74°N	84.11°W
GA	Marietta	30060	2	4	227	33.92°N	84.55°W
GA	Marietta	30062	2	62	220	34.00°N	84.47°W
GA	Marietta	30064	2	20	234	33.94°N	84.62°W
GA	Marietta	30066	2	15	224	34.03°N	84.51°W
GA	Marietta	30067	2	3	219	33.93°N	84.46°W
GA	Marietta	30068	3	36	217	33.97°N	84.43°W
GA	Marietta	30069	2	4	224	33.91°N	84.52°W
GA	Norcross	30071	2	1	196	33.94°N	84.21°W
GA	Roswell	30075	3	16	213	34.05°N	84.39°W
GA	Roswell	30076	2	23	207	34.03°N	84.32°W
GA	Snellville	30078	3	23	178	33.86°N	84.02°W
GA	Scottdale	30079	3	2	200	33.79°N	84.26°W
GA	Smyrna	30080	2	5	222	33.87°N	84.50°W
GA	Smyrna	30082	2	5	226	33.85°N	84.54°W
GA	Stone Mountain	30083	2	21	195	33.79°N	84.20°W
GA	Tucker	30084	2	20	196	33.85°N	84.22°W
GA	Stone Mountain	30087	3	18	189	33.81°N	84.13°W
GA	Stone Mountain	30088	2	3	193	33.76°N	84.18°W
GA	Norcross	30092	2	14	199	33.97°N	84.24°W
GA	Norcross	30093	3	8	193	33.91°N	84.18°W
GA	Conyers	30094	3	13	183	33.61°N	84.06°W
GA	Duluth	30096	3	19	191	33.98°N	84.15°W
GA	Duluth	30097	2	42	191	34.03°N	84.15°W

<u>State</u>	<u>ZIP Name</u>	<u>ZIP Code</u>	<u>MMI</u>	<u>Resp.</u>	<u>Distance (km)</u>	<u>Latitude</u>	<u>Longitude</u>
GA	Acworth	30101	2	14	243	34.04°N	84.72°W
GA	Acworth	30102	3	19	237	34.11°N	84.64°W
GA	Ball Ground	30107	3	11	216	34.34°N	84.35°W
GA	Bremen	30110	3	2	282	33.74°N	85.14°W
GA	Canton	30114	3	22	229	34.24°N	84.52°W
GA	Canton	30115	2	25	217	34.21°N	84.40°W
GA	Carrollton	30116	3	1	272	33.55°N	85.02°W
GA	Carrollton	30117	2	1	283	33.58°N	85.13°W
GA	Cartersville	30120	2	5	258	34.17°N	84.86°W
GA	Cartersville	30121	2	1	251	34.21°N	84.78°W
GA	Lithia Springs	30122	3	13	236	33.76°N	84.64°W
GA	Cedartown	30125	2	1	295	34.00°N	85.27°W
GA	Mableton	30126	3	2	227	33.82°N	84.55°W
GA	Powder Springs	30127	2	17	241	33.88°N	84.70°W
GA	Dallas	30132	2	7	256	33.99°N	84.86°W
GA	Douglasville	30135	2	5	246	33.67°N	84.75°W
GA	Hiram	30141	2	3	248	33.86°N	84.77°W
GA	Jasper	30143	2	10	227	34.46°N	84.43°W
GA	Kennesaw	30144	3	11	232	34.04°N	84.59°W
GA	Marble Hill	30148	4	1	213	34.42°N	84.29°W
GA	Kennesaw	30152	2	26	237	33.99°N	84.65°W
GA	Dallas	30157	3	19	257	33.89°N	84.87°W
GA	Rome	30161	2	1	287	34.24°N	85.17°W
GA	Austell	30168	3	6	231	33.78°N	84.59°W
GA	Rydal	30171	2	2	252	34.35°N	84.75°W
GA	Talking Rock	30175	3	4	238	34.54°N	84.53°W
GA	Tallapoosa	30176	3	1	297	33.77°N	85.31°W
GA	Tate	30177	2	1	221	34.41°N	84.38°W
GA	Temple	30179	4	1	271	33.78°N	85.02°W
GA	Villa Rica	30180	3	4	262	33.72°N	84.92°W
GA	Waleska	30183	3	3	238	34.34°N	84.60°W
GA	White	30184	3	1	247	34.26°N	84.72°W
GA	Winston	30187	2	3	256	33.66°N	84.85°W
GA	Woodstock	30188	3	41	220	34.12°N	84.45°W
GA	Woodstock	30189	2	19	231	34.13°N	84.57°W
GA	Barnesville	30204	2	1	207	33.05°N	84.13°W
GA	Concord	30206	3	1	234	33.09°N	84.46°W
GA	Fairburn	30213	2	6	235	33.58°N	84.62°W
GA	Fayetteville	30214	2	9	225	33.48°N	84.49°W
GA	Fayetteville	30215	3	17	224	33.39°N	84.46°W
GA	Franklin	30217	3	1	288	33.28°N	85.13°W
GA	Gay	30218	2	1	243	33.14°N	84.58°W
GA	Greenville	30222	3	1	261	33.05°N	84.75°W
GA	Griffin	30223	2	4	211	33.29°N	84.28°W
GA	Griffin	30224	3	16	211	33.21°N	84.25°W
GA	Hampton	30228	3	8	210	33.40°N	84.30°W
GA	Jackson	30233	3	17	184	33.29°N	83.98°W
GA	Jonesboro	30236	3	6	209	33.52°N	84.32°W

<u>State</u>	<u>ZIP Name</u>	<u>ZIP Code</u>	<u>MMI</u>	<u>Resp.</u>	<u>Distance (km)</u>	<u>Latitude</u>	<u>Longitude</u>
GA	Jonesboro	30238	3	5	215	33.49°N	84.38°W
GA	LaGrange	30240	2	1	294	33.04°N	85.12°W
GA	LaGrange	30241	3	3	280	33.02°N	84.96°W
GA	Locust Grove	30248	3	12	194	33.35°N	84.11°W
GA	McDonough	30252	3	26	186	33.47°N	84.06°W
GA	McDonough	30253	3	18	198	33.45°N	84.18°W
GA	Milner	30257	3	3	207	33.14°N	84.18°W
GA	Moreland	30259	3	1	253	33.27°N	84.74°W
GA	Newnan	30263	2	1	261	33.39°N	84.86°W
GA	Newnan	30265	2	4	246	33.42°N	84.71°W
GA	Palmetto	30268	3	1	245	33.54°N	84.72°W
GA	Peachtree City	30269	2	14	234	33.39°N	84.57°W
GA	Rex	30273	4	1	203	33.58°N	84.27°W
GA	Riverdale	30274	3	2	216	33.56°N	84.40°W
GA	Senoia	30276	2	5	239	33.27°N	84.58°W
GA	Sharpsburg	30277	3	4	242	33.38°N	84.65°W
GA	Stockbridge	30281	2	4	196	33.56°N	84.19°W
GA	Thomaston	30286	3	5	233	32.88°N	84.34°W
GA	Tyrone	30290	3	1	234	33.48°N	84.59°W
GA	Union City	30291	3	1	228	33.57°N	84.54°W
GA	Williamson	30292	2	2	225	33.16°N	84.39°W
GA	Ellenwood	30294	3	9	202	33.64°N	84.26°W
GA	Riverdale	30296	2	2	219	33.56°N	84.44°W
GA	Forest Park	30297	2	3	212	33.61°N	84.37°W
GA	Atlanta	30303	2	4	213	33.75°N	84.39°W
GA	Atlanta	30305	3	9	212	33.84°N	84.39°W
GA	Atlanta	30306	2	25	209	33.79°N	84.35°W
GA	Atlanta	30307	2	24	207	33.77°N	84.33°W
GA	Atlanta	30308	2	13	211	33.77°N	84.38°W
GA	Atlanta	30309	3	23	212	33.80°N	84.39°W
GA	Atlanta	30310	3	2	216	33.73°N	84.43°W
GA	Atlanta	30311	3	7	221	33.72°N	84.47°W
GA	Atlanta	30312	3	20	211	33.75°N	84.38°W
GA	Atlanta	30313	2	2	213	33.76°N	84.40°W
GA	Atlanta	30315	2	54	212	33.70°N	84.38°W
GA	Atlanta	30316	3	23	208	33.71°N	84.33°W
GA	Atlanta	30317	2	10	206	33.75°N	84.32°W
GA	Atlanta	30318	2	24	218	33.79°N	84.45°W
GA	Atlanta	30319	3	16	207	33.88°N	84.34°W
GA	Atlanta	30322	4	1	207	33.79°N	84.33°W
GA	Atlanta	30324	2	9	209	33.82°N	84.36°W
GA	Atlanta	30326	3	5	210	33.85°N	84.36°W
GA	Atlanta	30327	3	7	215	33.87°N	84.42°W
GA	Atlanta	30328	2	14	212	33.93°N	84.39°W
GA	Atlanta	30329	2	10	206	33.83°N	84.32°W
GA	Atlanta	30331	2	3	228	33.70°N	84.55°W
GA	Atlanta	30338	2	21	206	33.94°N	84.32°W
GA	Atlanta	30339	3	6	219	33.88°N	84.46°W

<u>State</u>	<u>ZIP Name</u>	<u>ZIP Code</u>	<u>MMI</u>	<u>Resp.</u>	<u>Distance (km)</u>	<u>Latitude</u>	<u>Longitude</u>
GA	Atlanta	30340	2	5	200	33.90°N	84.25°W
GA	Atlanta	30341	3	27	203	33.89°N	84.29°W
GA	Atlanta	30342	2	6	211	33.88°N	84.37°W
GA	Atlanta	30344	2	4	220	33.67°N	84.46°W
GA	Atlanta	30345	2	13	202	33.85°N	84.28°W
GA	Atlanta	30346	3	4	208	33.92°N	84.34°W
GA	Atlanta	30349	3	2	226	33.62°N	84.53°W
GA	Atlanta	30350	3	4	208	33.98°N	84.33°W
GA	Atlanta	30360	2	4	202	33.93°N	84.27°W
GA	Atlanta	30363	3	2	213	33.79°N	84.40°W
GA	Swainsboro	30401	2	4	136	32.60°N	82.35°W
GA	Bartow	30413	3	2	109	32.90°N	82.52°W
GA	Brooklet	30415	3	2	171	32.32°N	81.60°W
GA	Claxton	30417	4	43	184	32.16°N	81.91°W
GA	Louisville	30434	3	7	91	33.03°N	82.40°W
GA	Midville	30441	3	1	111	32.82°N	82.23°W
GA	Sardis	30456	2	2	97	32.98°N	81.78°W
GA	Soperton	30457	2	1	163	32.40°N	82.57°W
GA	Statesboro	30458	2	2	158	32.40°N	81.82°W
GA	Statesboro	30461	2	1	149	32.51°N	81.71°W
GA	Sylvania	30467	2	2	124	32.77°N	81.61°W
GA	Wadley	30477	2	1	109	32.86°N	82.40°W
GA	Gainesville	30501	3	27	168	34.32°N	83.82°W
GA	Gainesville	30504	2	6	173	34.27°N	83.89°W
GA	Gainesville	30506	3	19	176	34.35°N	83.90°W
GA	Gainesville	30507	3	4	162	34.26°N	83.77°W
GA	Alto	30510	3	4	154	34.44°N	83.59°W
GA	Baldwin	30511	3	5	145	34.45°N	83.47°W
GA	Blairsville	30512	3	30	208	34.86°N	83.97°W
GA	Blue Ridge	30513	3	6	231	34.81°N	84.30°W
GA	Bowersville	30516	3	1	107	34.38°N	83.04°W
GA	Braselton	30517	3	27	161	34.13°N	83.80°W
GA	Buford	30518	3	81	182	34.13°N	84.03°W
GA	Buford	30519	3	22	173	34.09°N	83.94°W
GA	Canon	30520	3	11	109	34.34°N	83.09°W
GA	Carnesville	30521	3	5	126	34.36°N	83.30°W
GA	Cherrylog	30522	4	1	234	34.78°N	84.36°W
GA	Clarksville	30523	3	28	164	34.70°N	83.53°W
GA	Clayton	30525	3	19	169	34.91°N	83.38°W
GA	Clermont	30527	3	4	172	34.48°N	83.79°W
GA	Cleveland	30528	3	42	178	34.61°N	83.77°W
GA	Commerce	30529	3	17	135	34.22°N	83.48°W
GA	Commerce	30530	3	9	127	34.22°N	83.38°W
GA	Cornelia	30531	3	19	158	34.51°N	83.59°W
GA	Dahlonega	30533	3	38	195	34.57°N	84.01°W
GA	Dawsonville	30534	2	30	202	34.44°N	84.15°W
GA	Demorest	30535	3	5	161	34.58°N	83.58°W
GA	Ellijay	30536	2	5	227	34.65°N	84.35°W

<u>State</u>	<u>ZIP Name</u>	<u>ZIP Code</u>	<u>MMI</u>	<u>Resp.</u>	<u>Distance (km)</u>	<u>Latitude</u>	<u>Longitude</u>
GA	Dillard	30537	3	1	173	34.98°N	83.34°W
GA	Eastanollee	30538	3	5	131	34.49°N	83.27°W
GA	Ellijay	30540	3	8	247	34.73°N	84.54°W
GA	Epworth	30541	2	3	255	34.92°N	84.53°W
GA	Flowery Branch	30542	3	34	172	34.18°N	83.91°W
GA	Helen	30545	2	3	185	34.74°N	83.77°W
GA	Hiawassee	30546	3	17	191	34.91°N	83.71°W
GA	Homer	30547	3	5	139	34.36°N	83.46°W
GA	Hoschton	30548	3	19	156	34.09°N	83.75°W
GA	Jefferson	30549	3	39	140	34.10°N	83.58°W
GA	Lakemont	30552	4	6	162	34.76°N	83.44°W
GA	Lavonia	30553	2	8	115	34.44°N	83.09°W
GA	Lula	30554	3	5	158	34.40°N	83.66°W
GA	Martin	30557	3	8	125	34.48°N	83.19°W
GA	Maysville	30558	3	4	145	34.27°N	83.56°W
GA	Mineral Bluff	30559	2	1	236	34.95°N	84.27°W
GA	Morganton	30560	3	4	226	34.88°N	84.19°W
GA	Mount Airy	30563	2	3	150	34.56°N	83.46°W
GA	Murrayville	30564	2	1	179	34.42°N	83.90°W
GA	Nicholson	30565	3	6	125	34.09°N	83.41°W
GA	Oakwood	30566	4	2	172	34.24°N	83.89°W
GA	Pendergrass	30567	3	1	151	34.19°N	83.67°W
GA	Rabun Gap	30568	3	3	175	34.96°N	83.41°W
GA	Sautee Nacoochee	30571	3	12	177	34.71°N	83.69°W
GA	Suches	30572	3	1	209	34.74°N	84.07°W
GA	Talmo	30575	3	2	155	34.20°N	83.71°W
GA	Tiger	30576	4	10	167	34.82°N	83.45°W
GA	Toccoa	30577	3	41	140	34.56°N	83.33°W
GA	Young Harris	30582	3	6	206	34.95°N	83.88°W
GA	Athens	30601	3	34	117	34.00°N	83.35°W
GA	Athens	30602	4	1	119	33.95°N	83.37°W
GA	Athens	30605	3	113	114	33.91°N	83.32°W
GA	Athens	30606	3	131	124	33.94°N	83.43°W
GA	Athens	30607	3	126	127	34.02°N	83.45°W
GA	Athens	30609	2	1	119	33.90°N	83.37°W
GA	Arnoldsville	30619	3	13	105	33.86°N	83.23°W
GA	Bethlehem	30620	3	12	154	33.93°N	83.76°W
GA	Bishop	30621	3	21	128	33.80°N	83.48°W
GA	Bogart	30622	3	34	132	33.96°N	83.51°W
GA	Bowman	30624	3	11	95	34.18°N	83.03°W
GA	Buckhead	30625	3	5	120	33.52°N	83.35°W
GA	Carlton	30627	4	2	82	33.97°N	82.96°W
GA	Colbert	30628	3	21	105	34.02°N	83.21°W
GA	Comer	30629	3	14	99	34.08°N	83.12°W
GA	Crawford	30630	2	3	99	33.90°N	83.16°W
GA	Crawfordville	30631	3	2	78	33.56°N	82.87°W
GA	Danielsville	30633	3	19	114	34.18°N	83.25°W
GA	Dewy Rose	30634	3	7	90	34.22°N	82.95°W

<u>State</u>	<u>ZIP Name</u>	<u>ZIP Code</u>	<u>MMI</u>	<u>Resp.</u>	<u>Distance (km)</u>	<u>Latitude</u>	<u>Longitude</u>
GA	Elberton	30635	3	45	73	34.11°N	82.81°W
GA	Good Hope	30641	4	1	136	33.78°N	83.57°W
GA	Greensboro	30642	3	25	106	33.55°N	83.19°W
GA	Hartwell	30643	3	40	96	34.35°N	82.91°W
GA	Hull	30646	3	10	116	34.08°N	83.31°W
GA	Lexington	30648	3	12	90	33.88°N	83.06°W
GA	Madison	30650	3	22	129	33.59°N	83.46°W
GA	Monroe	30655	3	20	148	33.78°N	83.69°W
GA	Monroe	30656	3	30	150	33.86°N	83.72°W
GA	Rayle	30660	3	4	80	33.78°N	82.96°W
GA	Royston	30662	3	11	109	34.26°N	83.15°W
GA	Rutledge	30663	3	6	141	33.61°N	83.60°W
GA	Statham	30666	3	10	139	33.96°N	83.58°W
GA	Stephens	30667	3	3	100	33.77°N	83.17°W
GA	Tignall	30668	3	1	57	33.90°N	82.70°W
GA	Union Point	30669	3	3	95	33.67°N	83.11°W
GA	Washington	30673	3	22	59	33.73°N	82.72°W
GA	Watkinsville	30677	3	54	119	33.79°N	83.38°W
GA	Winder	30680	3	60	150	34.00°N	83.70°W
GA	Winterville	30683	4	17	108	33.94°N	83.26°W
GA	Calhoun	30701	1	1	274	34.50°N	84.95°W
GA	Crandall	30711	1	1	275	34.93°N	84.77°W
GA	Dalton	30720	2	1	287	34.74°N	85.00°W
GA	Rising Fawn	30738	2	1	330	34.80°N	85.48°W
GA	Appling	30802	4	10	32	33.60°N	82.32°W
GA	Avera	30803	2	1	85	33.14°N	82.53°W
GA	Dearing	30808	4	6	55	33.38°N	82.39°W
GA	Evans	30809	4	153	29	33.56°N	82.16°W
GA	Gibson	30810	5	2	79	33.23°N	82.59°W
GA	Grovetown	30813	3	178	40	33.47°N	82.22°W
GA	Harlem	30814	4	16	46	33.44°N	82.31°W
GA	Hephzibah	30815	3	38	60	33.27°N	82.09°W
GA	Keysville	30816	3	1	73	33.16°N	82.18°W
GA	Lincolnton	30817	4	39	33	33.78°N	82.45°W
GA	Matthews	30818	3	1	66	33.24°N	82.30°W
GA	Mitchell	30820	5	1	88	33.21°N	82.71°W
GA	Stapleton	30823	3	1	72	33.24°N	82.46°W
GA	Thomson	30824	4	45	51	33.51°N	82.51°W
GA	Warrenton	30828	4	4	69	33.38°N	82.63°W
GA	Waynesboro	30830	3	3	82	33.08°N	81.99°W
GA	Wrens	30833	3	4	73	33.20°N	82.36°W
GA	Augusta	30901	4	4	44	33.43°N	81.96°W
GA	Augusta	30904	4	150	38	33.48°N	82.01°W
GA	Augusta	30905	3	45	51	33.36°N	82.22°W
GA	Augusta	30906	3	24	53	33.35°N	81.97°W
GA	Augusta	30907	4	132	33	33.52°N	82.09°W
GA	Augusta	30909	4	56	38	33.47°N	82.09°W
GA	Bonaire	31005	2	4	199	32.52°N	83.57°W

<u>State</u>	<u>ZIP Name</u>	<u>ZIP Code</u>	<u>MMI</u>	<u>Resp.</u>	<u>Distance (km)</u>	<u>Latitude</u>	<u>Longitude</u>
GA	Butler	31006	2	4	242	32.60°N	84.25°W
GA	Byron	31008	2	4	203	32.66°N	83.79°W
GA	Culloden	31016	4	1	222	32.80°N	84.15°W
GA	Davisboro	31018	4	1	104	32.98°N	82.62°W
GA	Dublin	31021	3	6	166	32.49°N	82.93°W
GA	Eastman	31023	3	6	207	32.20°N	83.19°W
GA	Eatonton	31024	3	38	131	33.32°N	83.37°W
GA	East Dublin	31027	2	1	153	32.58°N	82.82°W
GA	Centerville	31028	2	1	198	32.63°N	83.68°W
GA	Forsyth	31029	3	11	191	33.04°N	83.93°W
GA	Fort Valley	31030	4	1	217	32.57°N	83.90°W
GA	Gordon	31031	3	5	154	32.88°N	83.32°W
GA	Gray	31032	3	10	164	33.02°N	83.58°W
GA	Hawkinsville	31036	2	1	217	32.25°N	83.50°W
GA	Hillsboro	31038	3	1	161	33.15°N	83.64°W
GA	Irwinton	31042	3	1	155	32.75°N	83.17°W
GA	Juliette	31046	3	4	179	33.05°N	83.79°W
GA	Kathleen	31047	2	5	204	32.47°N	83.59°W
GA	Kite	31049	3	1	129	32.71°N	82.52°W
GA	Lizella	31052	3	4	200	32.77°N	83.85°W
GA	Milledgeville	31061	3	56	134	33.08°N	83.24°W
GA	Monticello	31064	3	11	160	33.29°N	83.70°W
GA	Roberta	31078	2	1	222	32.71°N	84.09°W
GA	Sandersville	31082	3	17	118	32.99°N	82.90°W
GA	Shady Dale	31085	3	1	149	33.42°N	83.63°W
GA	Sparta	31087	4	8	103	33.28°N	83.00°W
GA	Warner Robins	31088	2	3	199	32.58°N	83.65°W
GA	Tennille	31089	3	2	128	32.86°N	82.87°W
GA	Toombsboro	31090	3	1	144	32.80°N	83.05°W
GA	Vienna	31092	2	1	248	32.09°N	83.79°W
GA	Warner Robins	31093	2	2	195	32.65°N	83.66°W
GA	Warthen	31094	3	1	102	33.11°N	82.80°W
GA	Warner Robins	31098	3	12	191	32.62°N	83.57°W
GA	Macon	31201	3	8	180	32.83°N	83.62°W
GA	Macon	31204	3	9	182	32.85°N	83.68°W
GA	Macon	31206	3	34	185	32.79°N	83.67°W
GA	Macon	31207	3	1	182	32.83°N	83.65°W
GA	Macon	31210	3	17	183	32.91°N	83.74°W
GA	Macon	31211	3	7	172	32.90°N	83.58°W
GA	Macon	31216	2	6	190	32.73°N	83.68°W
GA	Macon	31217	2	3	176	32.76°N	83.50°W
GA	Macon	31220	3	3	192	32.88°N	83.82°W
GA	Allenhurst	31301	2	1	235	31.74°N	81.60°W
GA	Clyo	31303	2	2	162	32.51°N	81.31°W
GA	Guyton	31312	3	2	178	32.32°N	81.40°W
GA	Ludowici	31316	1	1	233	31.73°N	81.74°W
GA	Pembroke	31321	3	1	185	32.18°N	81.68°W
GA	Pooler	31322	2	7	206	32.09°N	81.25°W

<u>State</u>	<u>ZIP Name</u>	<u>ZIP Code</u>	<u>MMI</u>	<u>Resp.</u>	<u>Distance (km)</u>	<u>Latitude</u>	<u>Longitude</u>
GA	Riceboro	31323	2	1	240	31.71°N	81.44°W
GA	Rincon	31326	3	3	187	32.30°N	81.21°W
GA	Tybee Island	31328	2	3	231	32.01°N	80.87°W
GA	Springfield	31329	2	1	169	32.42°N	81.34°W
GA	Townsend	31331	2	2	257	31.56°N	81.44°W
GA	Savannah	31401	2	6	214	32.08°N	81.09°W
GA	Savannah	31404	3	1	218	32.05°N	81.05°W
GA	Savannah	31405	2	3	214	32.04°N	81.17°W
GA	Savannah	31407	2	3	200	32.18°N	81.19°W
GA	Savannah	31408	2	1	206	32.12°N	81.19°W
GA	Savannah	31410	2	4	226	32.01°N	80.96°W
GA	Savannah	31411	1	1	232	31.92°N	81.02°W
GA	Savannah	31415	2	13	212	32.08°N	81.12°W
GA	Savannah	31419	2	4	226	31.92°N	81.19°W
GA	Brunswick	31523	2	2	291	31.22°N	81.63°W
GA	Jesup	31545	2	1	243	31.63°N	81.95°W
GA	White Oak	31568	2	1	312	31.01°N	81.79°W
GA	Valdosta	31601	1	1	359	30.75°N	83.34°W
GA	Valdosta	31602	1	1	347	30.87°N	83.35°W
GA	Albany	31707	2	1	317	31.58°N	84.21°W
GA	Thomasville	31792	1	1	385	30.77°N	84.04°W
GA	Warwick	31796	2	1	283	31.76°N	83.88°W
GA	Ellerslie	31807	2	1	283	32.65°N	84.80°W
GA	Hamilton	31811	2	1	291	32.74°N	84.94°W
GA	Midland	31820	3	1	289	32.58°N	84.83°W
GA	Shiloh	31826	2	1	269	32.79°N	84.72°W
GA	West Point	31833	2	1	299	32.84°N	85.10°W
GA	Woodland	31836	3	1	256	32.79°N	84.56°W
GA	Columbus	31901	4	1	308	32.46°N	84.98°W
GA	Fort Benning	31905	2	1	300	32.38°N	84.81°W
GA	Columbus	31906	2	1	305	32.47°N	84.95°W
GA	Columbus	31907	3	1	295	32.48°N	84.83°W
GA	Columbus	31909	2	2	299	32.55°N	84.92°W
FL	Tallahassee	32309	1	1	406	30.57°N	84.10°W
FL	Pensacola	32502	1	1	613	30.41°N	87.21°W
FL	Gulf Breeze	32563	3	1	601	30.39°N	87.04°W
FL	Riverview	33569	1	1	662	27.84°N	82.29°W
FL	Summerfield	34491	2	1	534	29.00°N	82.04°W
AL	Odenville	35120	2	1	401	33.67°N	86.42°W
AL	Pelham	35124	3	1	438	33.31°N	86.78°W
AL	Moundville	35474	3	1	519	32.94°N	87.57°W
AL	Hartselle	35640	2	1	452	34.44°N	86.94°W
AL	Toney	35773	3	1	441	34.90°N	86.71°W
AL	Huntsville	35802	2	1	422	34.67°N	86.56°W
AL	Montgomery	36116	2	1	420	32.26°N	86.20°W
AL	Heflin	36264	3	1	321	33.61°N	85.55°W
AL	Dothan	36301	1	1	429	31.15°N	85.40°W
AL	Auburn	36830	2	4	346	32.54°N	85.48°W

<u>State</u>	<u>ZIP Name</u>	<u>ZIP Code</u>	<u>MMI</u>	<u>Resp.</u>	<u>Distance (km)</u>	<u>Latitude</u>	<u>Longitude</u>
AL	Auburn	36832	3	1	351	32.59°N	85.57°W
AL	Phenix City	36867	3	2	310	32.50°N	85.02°W
AL	Phenix City	36870	3	1	318	32.48°N	85.12°W
AL	Salem	36874	2	1	321	32.57°N	85.21°W
TN	Chapel Hill	37034	2	1	466	35.64°N	86.69°W
TN	Nashville	37205	2	1	505	36.11°N	86.87°W
TN	Nashville	37217	2	1	489	36.11°N	86.67°W
TN	Nashville	37228	1	1	504	36.19°N	86.80°W
TN	Athens	37303	3	1	295	35.44°N	84.64°W
TN	Cleveland	37312	2	2	299	35.23°N	84.88°W
TN	Copperhill	37317	2	3	254	35.04°N	84.44°W
TN	Graysville	37338	2	1	336	35.44°N	85.19°W
TN	MC Donald	37353	2	1	302	35.13°N	84.98°W
TN	Tellico Plains	37385	3	1	259	35.32°N	84.25°W
TN	Chattanooga	37407	3	3	322	35.00°N	85.29°W
TN	Johnson City	37601	2	4	279	36.33°N	82.32°W
TN	Johnson City	37604	2	6	277	36.30°N	82.38°W
TN	Johnson City	37615	2	2	288	36.40°N	82.45°W
TN	Blountville	37617	3	1	302	36.53°N	82.37°W
TN	Bristol	37620	3	1	303	36.55°N	82.10°W
TN	Elizabethton	37643	2	6	283	36.38°N	82.14°W
TN	Jonesborough	37659	2	7	276	36.28°N	82.49°W
TN	Kingsport	37660	2	1	304	36.53°N	82.57°W
TN	Bulls Gap	37711	2	1	286	36.28°N	83.04°W
TN	Cosby	37722	2	1	244	35.80°N	83.23°W
TN	Dandridge	37725	1	1	269	35.99°N	83.40°W
TN	Gatlinburg	37738	2	1	241	35.67°N	83.48°W
TN	Greeneville	37743	3	3	259	36.07°N	82.86°W
TN	Greeneville	37745	2	1	281	36.28°N	82.82°W
TN	Kodak	37764	3	1	276	35.97°N	83.62°W
TN	La Follette	37766	3	1	341	36.41°N	84.10°W
TN	Lancing	37770	2	1	349	36.15°N	84.66°W
TN	Loudon	37774	2	1	296	35.73°N	84.35°W
TN	Louisville	37777	2	1	285	35.83°N	84.05°W
TN	Maryville	37803	2	2	268	35.67°N	83.98°W
TN	Maryville	37804	2	1	274	35.79°N	83.89°W
TN	Morristown	37814	2	3	291	36.24°N	83.33°W
TN	Oak Ridge	37830	4	1	311	35.97°N	84.28°W
TN	Parrottsville	37843	2	1	258	36.01°N	83.05°W
TN	Powell	37849	2	2	305	36.06°N	84.04°W
TN	Sevierville	37862	2	1	258	35.78°N	83.61°W
TN	Thorn Hill	37881	3	1	308	36.39°N	83.36°W
TN	Townsend	37882	3	1	253	35.63°N	83.78°W
TN	Knoxville	37909	3	1	294	35.95°N	84.02°W
TN	Knoxville	37917	2	2	294	36.00°N	83.91°W
TN	Knoxville	37919	3	1	291	35.92°N	84.00°W
TN	Knoxville	37931	2	1	303	35.98°N	84.13°W
TN	Millington	38053	2	1	738	35.34°N	89.92°W

<u>State</u>	<u>ZIP Name</u>	<u>ZIP Code</u>	<u>MMI</u>	<u>Resp.</u>	<u>Distance (km)</u>	<u>Latitude</u>	<u>Longitude</u>
TN	Cookeville	38501	3	1	412	36.23°N	85.54°W
TN	Monterey	38574	2	1	385	36.13°N	85.23°W
MS	Columbus	39705	1	1	589	33.58°N	88.44°W
GA	Fort Gaines	39851	2	1	363	31.67°N	85.02°W
KY	Louisville	40208	2	1	590	38.22°N	85.76°W
OH	Johnstown	43031	2	1	705	40.16°N	82.67°W
IN	New Albany	47150	2	1	600	38.29°N	85.85°W
MI	Royal Oak	48073	2	1	970	42.52°N	83.16°W
WI	Kenosha	53140	2	1	1098	42.62°N	87.83°W
LA	New Orleans	70114	1	1	865	29.93°N	90.03°W
AR	Conway	72032	2	1	953	35.07°N	92.36°W

Due to the large number of responses for this event the sortable table usually found here is not a usable solution. You can still view this data by downloading the "Intensity Summary" from our "Downloads" tab. This file is generally available in a simple text format, or XML format. You should be able to then import that data into a spreadsheet application for further analysis. Please keep in mind that in the minutes, hours, and days following an event of this size we will likely receive additional felt reports that will be used to update this file. Please check back frequently to make sure you have the most up to date file.

Share this page: [Facebook](#) [Twitter](#) [Google](#) [Email](#)