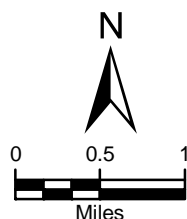


**LEGEND**

- ▭ Proposed Marsland Expansion Area
- ▭ 2.25-Mile Area of Review (AOR)
- ▭ 3-Kilometers AOR for Gardens
- ▲ Livestock Sampling Location
- Garden Soil Sampling Location
- ★ Vegetation Sampling Location
- Proposed Marsland Satellite Facility Site
- ⊕ CBR Surface Water/ Sediment Sampling Location
- Marsland Ephemeral Drainage (MED) Sediment and Surface Runoff Sampling Point
- ⊙ USGS/NDNR 06454500 and NDEQ SNI4NIOBR402 Gaging Station
- Natural Spring
- ▭ Reservoir/Lake/Pond
- Perennial River
- - - Ephemeral Drainage
- Railroad
- State Highway



PROJECTION: NAD 1983, STATE PLANE NEBRASKA NORTH, FIPS 2600  
 SOURCES: US TOPO MAPS, SERVICED BY ESRI ARCGIS ONLINE



**CROW BUTTE RESOURCES, INC.**

**FIGURE 2.7-4  
 SURFACE WATER/SEDIMENT,  
 VEGETATION, GARDEN AND LIVESTOCK  
 SAMPLING LOCATIONS**

PROJECT: CO001636 MAPPED BY: JC CHECKED BY: JEC



630 Plaza Drive, Ste. 100  
 Highlands Ranch, CO 80129  
 P: 720-344-3500 F: 720-344-3535  
 www.arcadis-us.com

Note: Fish sampling for radiological analysis occurs in headwaters of Box Butte Reservoir.