

## Munoz, Rick

---

**From:** Vasquez, Michael  
**Sent:** Tuesday, December 02, 2014 9:08 AM  
**To:** Munoz, Rick  
**Subject:** FW: Logbook Entry: 11/27/2014

FYI ....

-----Original Message-----

**From:** HOO Hoc  
**Sent:** Thursday, November 27, 2014 12:32 AM  
**To:** HOO Hoc  
**Subject:** Logbook Entry: 11/27/2014

Ops Officer : DONG HWA PARK  
Entry Date : 11/27/2014 - 01:10  
Entry Type : WELL LOGGING  
Notify Date - Time : 11/27/2014 - 01:10  
Event Date - Time : - ()  
Site :  
Emergency Class :

---

Notified by a Halliburton Energy Services, Inc. (License# 42-01068-07) Radiation Safety Officer of a proposed well logging source abandonment (Steve Woods 580-618-0791 cell; 580-251-3936 office). The abandoned well logging source consists of a Cs-137, 2 Ci, Serial #22854B and a Am241Be, 15 Ci, Serial #59452B located at Keathley Canyon Block 93, Well Name: OCS-G 25780 001 ST01BP00

The R4DO (Campbell), R4 Branch Chief (Michael Vasquez) and Steve Woods discussed further details on the Operations Center conference bridge (NRC-1). Based on available information, permission was granted to proceed with the abandonment procedure by Mr. Vasquez.

Notified the R4DO (Campbell), R4 Branch Chief (Vasquez) and NMSS\_Events Notification via email.

## Munoz, Rick

---

**From:** Vasquez, Michael  
**Sent:** Tuesday, December 02, 2014 9:07 AM  
**To:** Munoz, Rick  
**Subject:** FW: BP Pipe Sever and Cement Plan  
**Attachments:** LIH Well Schematic.pdf; RUN 700 Lost In Hole Timeline.docx

FYI ...

---

**From:** Campbell, Vivian  
**Sent:** Friday, November 28, 2014 8:30 AM  
**To:** Vasquez, Michael  
**Subject:** FW: BP Pipe Sever and Cement Plan

---

**From:** HOO Hoc  
**Sent:** Thursday, November 27, 2014 12:33 AM  
**To:** HOO Hoc  
**Subject:** FW: BP Pipe Sever and Cement Plan

Headquarters Operations Officer  
U. S. Nuclear Regulatory Commission  
Phone: 301-816-5100  
Fax: 301-816-5151  
email: [hoo.hoc@nrc.gov](mailto:hoo.hoc@nrc.gov)  
secure email: [hoo1@nrc.sgov.gov](mailto:hoo1@nrc.sgov.gov)



---

**From:** Steve Woods - Global RSO [<mailto:Steve.Woods@Halliburton.com>]  
**Sent:** Thursday, November 27, 2014 1:22 AM  
**To:** HOO Hoc  
**Subject:** FW: BP Pipe Sever and Cement Plan

Thank you for your approval Mrs Campbell and Mr. Vasquez for our abandonment

Steve Woods  
**Global Radiation & Explosive Safety**  
Senior Radiation Safety Officer  
Halliburton Energy Services, Inc.  
Office:580-251-3936  
Mobile:580-618-0791  
e-mail: [Steve.Woods@Halliburton.com](mailto:Steve.Woods@Halliburton.com)

---

This e-mail, including any attached files, may contain confidential and privileged information for the sole use of the intended recipient. Any review, use, distribution, or disclosure by others is strictly prohibited. If you are not

the intended recipient (or authorized to receive information for the intended recipient), please contact the sender by reply e-mail and delete all copies of this message.

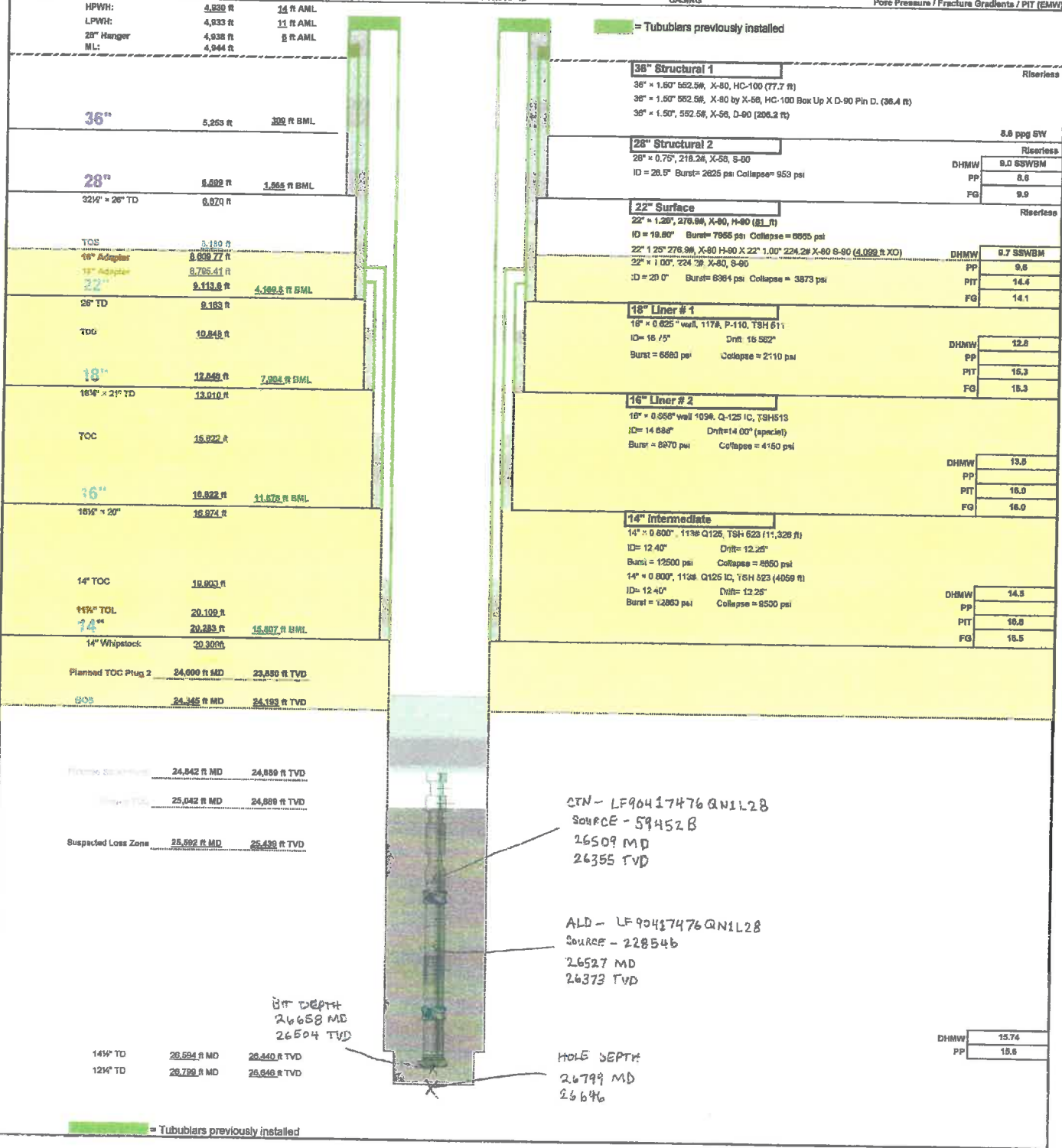
**BP GOM Deepwater Exploration**  
**Keathley Canyon 93 # 1 ST001 - Gila Prospect**  
**BP Confidential**



WELL NAME: <u>KC 93 #1 ST01 (Gila Prospect - OCS-G-25780)</u>	PARTNER: <u>Conoco Phillips (20 %)</u>	DATE: <u>11/28/14</u>	REV: <u>1.10</u>
OPERATOR: <u>BP</u>	AREA: <u>OFFSHORE</u>	PTD: <u>31,164 ft MD; 31,000 ft TVD</u>	
FIELD / PROSPECT: <u>WILDCAT</u>	STATE: <u>LA</u>	PBHL: <u>X=1,425,478 Y=9,748,227</u>	
SURFACE LOCATION: <u>X=1,425,475.35 Y=9,748,226.69</u>		RF ELEV: <u>84 ft</u>	WD: <u>4880 ft</u>
OBJECTIVE ZONE(S): <u>Primary - Paleogene</u>		RIG: <u>Ensoo DS-4</u>	

DRILL-QUIP, SS-15 BIGBORE II - H - 27" O.D. H4 Conn.  
WELLHEAD SYSTEM WITH 18.510" ID

Equivalent Downhole Mud Weights (ppg)  
Pore Pressure / Fracture Gradients / PIT (EMW)



Customer Name: BP Exploration & Production Inc.

Address: BP America

P.O. Box 22024

Tulsa, OK 741212024

Well Name: OCS-G 25780 001 ST01BP00

Well Location: Keathley Canyon Block 93

Country: USA

Rig Name: Ensco DS-4

API #: 6080840033402

Rig Phone #: 713-336-8300

Job #: LF-XX- 0901336084

BP Well Site Team Leader: Walter Guillot

BP Well Site Leader: Robert Stewart

BP Well Site Leader: Jimmy Pilcher

MWD Lead: Franklin Williamson

MWD Lead: Jason Anderson

Hole Depth: 26799' MD / 26645' TVD

Bit Depth: 26658' MD / 26504' TVD

ALD Virtual String #: LF90417476QN1L28

Source: 22854b - 2 Ci Cs137

Source Depth: 26527' MD / 26373' TVD

CTN Virtual String #: LF90417476QN1L28

Source: 59452B - 15 Ci Am241Be

Source Depth: 26509' MD / 26355' TVD

#### RUN 700\_12 ¼" X 14 1/2" QUAD Combo BHA\_LOST IN HOLE Timeline

11/20/16 02:15 – 07:30 WHILE DRILLING WITH 15.2 PPG SOBM, OBSERVED INCREASE IN ACTIVE SYSTEM WITH NO INCREASE IN RETURN FLOW. PICK UP OFF BOTTOM FROM 26,799' TO 26,765' AND SPACE OUT TOOL JOINT IN BOP WHILE SLOWING ROTARY TO 5 RPM. SHUT DOWN MUD PUMPS.

LINE UP ON TRIP TANK, OBSERVED 16.9 BARREL INCREASE IN TRIP TANK VOLUME. AT 02:30 HRS. SHUT DOWN ROTARY. CLOSE UPPER ANNULAR AND OPEN LOWER CHOKE FAIL SAFES. MONITOR PRESSURES ON WELL HEAD, SHUT IN DRILL PIPE AND SHUT IN CASING PRESSURE EVERY MINUTE.

- 11/20/16 07:30 – 12:00 AT 07:45 BRING PUMPS ON LINE IN 2 SPM INTERVALS ON MUD PUMP #3 TO 20 STKS/MIN. (KILL RATE SPEED USING THE DRILLER'S METHOD) USING 15.2 PPG SOBM WHILE KEEPING CASING PRESSURE CONSTANT. LET PRESSURE STABILIZE ON DRILL PIPE AND SWITCHED OVER TO DRILL PIPE PRESSURE GAUGE, CONTINUE TO CIRCULATE KICK OUT OF WELL BORE HOLDING DRILL PIPE WITH 1,150 PSI TO 1,250 PSI AT 20 SPM.
- 11/20/16 12:00 – 00:00 WITH WELL SHUT IN ON UPPER ANNULAR, CONTINUED CIRCULATING INFLUX OUT OF WELL BORE PUMPING 15.2 PPG SOBM DOWN DRILL STRING AT 100 GPM TAKING RETURNS THROUGH #1 CHOKE AND MANIPULATING DRILL PIPE PRESSURE FROM 1,150 PSI TO 1,250 PSI BY MAKING AUTO CHOKE ADJUSTMENTS ACCORDINGLY, WHILE MONITORING RISER ON TRIP TANK, RISER STATIC.
- 11/21/16 00:00 – 12:00 WITH WELL SHUT IN ON UPPER ANNULAR, CONTINUED CIRCULATING INFLUX OUT OF WELL BORE PUMPING 15.2 PPG SOBM DOWN DRILL STRING AT 100 GPM (20 SPM)
- 11/21/16 12:00 – 00:00 WITH WELL SHUT IN ON UPPER ANNULAR CONTINUED CIRCULATING 15.2 PPG SOBM DOWN DRILL STRING AT 100 GPM (20 SPM). INCREASE PUMP RATE TO 30 SPM PUMPING 15.2 PPG SOBM DOWN DRILL STRING AT 150 GPM MANIPULATING DRILL PIPE PRESSURE FROM 1,250 PSI TO 1,265 PSI BY AUTO CHOKE ADJUSTMENTS, WHILE MAKING PREPARATIONS TO MUD SYSTEM FOR UPCOMING KILL MUD CIRCULATIONS. TREATING ACTIVE PIT #11 TO MAINTAIN WEIGHT. ACTIVE SYSTEM STATIC AND RISER VOLUME STATIC.
- 11/22/16 00:00 – 03:30 WITH WELL SHUT IN ON UPPER ANNULAR, CONTINUED PUMPING 15.2 PPG SOBM DOWN DRILL STRING AT 150 GPM (30 SPM) MANIPULATING DRILL PIPE PRESSURE FROM 1,250 PSI TO 1,265 PSI BY AUTO CHOKE ADJUSTMENTS WHILE PREPARING MUD PITS FOR KILL MUD OF 15.4 PPG.
- 11/22/16 03:30 – 07:00 BEGIN PUMPING 15.4 PPG KILL MUD AT 30 SPM WITH 1,225 PSI INITIAL CIRCULATING PRESSURE
- 11/22/16 07:30 – 00:00 WITH WELL SHUT IN ON UPPER ANNULAR, CONTINUED CIRCULATING 15.4 PPG KILL MUD UP ANNULUS AT 150 GPM (30 SPM) TAKING RETURNS THROUGH #1 CHOKE.

11/23/16 00:00 – 08:00 WITH WELL CLOSED IN ON UPPER ANNULAR,  
CONTINUED TO FLOW CHECK WELL ON OPEN CHOKE,  
  
WEIGHED UP PIT #12 TO 15.5 PPG KILL MUD.  
  
WITH OPEN CHOKE, BEGIN PUMPING 15.5 PPG KILL MUD,  
STAGING PUMPS UP TO 30 SPM WITH 1,075 PSI INITIAL  
CIRCULATING PRESSURE FOLLOWING BP PROCEDURE

11/23/16 08:00 – 00:00 WITH WELL SHUT IN ON UPPER ANNULAR, CONTINUED  
CIRCULATING 15.5 PPG KILL MUD UP ANNULUS AT 150  
GPM (30 SPM)

11/24/16 00:00 – 04:00 CONTINUE TO MONITOR AND RECORD TRIP TANK  
READINGS EVERY MINUTE FOR FLOW, WELL STATIC.  
  
PREPARE TO DISPLACE RISER FROM 15.1 PPG SOBM TO  
15.5 PPG SOBM AS PER "PROCEDURE AMENDMENT #7  
OPEN WELL AFTER NO FLOW DURING KILL OPERATION".  
  
DISPLACE RISER THROUGH BOOST LINE FROM 15.1 PPG  
SOBM TO 15.5 PPG SOBM AT 600 GPM WITH 1,545 PSI.

11/24/16 04:00 – 08:30 SWEEP BOP DOWN KILL LINE, UP GAS BLEEDS,  
THROUGH MGS AT 320 GPM WITH 937 PSI. PUMP 1.5  
TIMES CHOKE LINE PLUS BOP VOLUME. NO GAS  
OBSERVED AT SURFACE.  
  
SHUT DOWN PUMP. OPEN #5 RAM. CLOSE KILL LINE  
FAIL SAFES. AT 0430 HRS. LINE UP MINI TRIP TANK TO  
WELL BELOW UPPER ANNULAR AND PERFORM FLOW  
CHECK. WELL STATIC  
  
OPEN UPPER ANNULAR (24 SEC, 58.2 GAL.) AND  
PERFORMED 15 MINUTE FLOW CHECK. LOSS .32 BBLS.  
  
DRILL STRING FREE.

11/24/16 08:30 – 00:00 CIRCULATE 1.5 TIMES BOTTOMS UP WHILE ROTATE AND  
RECIPROCATATE DRILL STRING. ROTATE AT 15 RPM WITH  
7-8K TORQUE. PUMP AT 350 GPM WITH 1,978 PSI.

11/25/16 00:30 – 05:30 CIRCULATE BOTTOMS UP AT 26,765' PUMPING DOWN  
DRILL STRING WITH 15.5 PPG SOBM AT 350 GPM WITH  
1,858 PSI, RECIPROCATED AND ROTATED AT 15 RPM  
WITH 6-7K. P/U 855K, S/O 845K. MONITORING FOR GAINS  
OR LOSSES.

11/25/16 05:30 – 12:00 PUMP OUT OF THE HOLE AT 10 MINUTES A STAND FROM 26,765' TO 26,630'.

RACK BACK 1 STAND. WEATHERFORD DROP 10 RFID TAGS TO OPEN REAMER. P/U=880K, S/O=823K. PUMPED AT 350 GPM WITH 1,858 PSI AT 4,393 STKS, REDUCE PUMPS TO 300 GPM WITH 1,490 PSI. NO INDICATION REAMER OPENED.

PERFORMED FLOW BACK CHECK AS PER HOUSTON WELL CONTROL TEAM AT 26,624' RECORDING ACTIVE VOLUME AND FLOW BACK RATE READINGS EVERY MINUTE.

11/25/16 12:30 – 00:00 LINED UP AND MONITORED WELL BORE ON THE TRIP TANK RECORDING TRIP TANK VOLUME AND FLOW RATE EVERY MINUTE.

CIRCULATED WEATHERFORD RFID REAMER OPEN TAGS PUMPING 15.5 PPG SOBM DOWN DRILL STRING AT 350 GPM WITH 1,930 PSI

DECISION MADE TO WEIGHT UP TO 15.6 PPG.

CIRCULATE WEATHERFORD RFID CLOSE TAGS PUMPING DOWN DRILL STRING WITH 15.6 PPG SOBM AT 500 GPM WITH 3,420 PSI WITH NO INDICATION OF REAMER CLOSING, CONTINUE CIRCULATING 15.6 PPG SOBM

11/26/16 00:00 – 12:00 CIRCULATE

11/26/16 12:00 – 14:30 DOWNLINK BALLOON TEST.

PERFORM FLOW CHECK .

TOOK SLOW CIRULATING RATES.

11/26/16 14:30 – TIL PUMP OUT, SAW LOSS RETURNS

SHUT IN WELL

PUMP BASE OIL DOWN KILL LINE

MONITORING WELL



**HALLIBURTON**  
Global Radiation Safety  
3000 N. Sam Houston Parkway East · Building M, Room M1F21  
Houston, Texas 77032-3219

December 23, 2014

U.S. Nuclear Regulatory Commission – Region IV  
612 East Lamar Blvd., Suite 400  
Arlington, TX 76011-4125

Attn: Division Director - DNMS

**Re: Notification of Well Logging Sealed Source Abandonment  
Halliburton Energy Services, Inc.  
USNRC License No. 41-01068-07**

This letter comprises the required 30-day written notification of source abandonment as required by 10 CFR 39.77(d). This is a follow-up to the communications between Steve Woods (Halliburton) and Mrs. Campbell and Mr. Vasquez (NRC Region IV) on November 27, 2014, in which permission to proceed with the abandonment was granted.

Date of Occurrence: 30 November 2014

Company Name: BP Exploration & Production Inc.  
BP America  
P.O. Box 22024  
Tulsa, OK 741212024

Well Name & Registration No.: OCS-G 25780 001 ST01BP00  
6080840033402

Well Location: Keathley Canyon Block 93  
Offshore Gulf of Mexico  
USA

Sources Abandoned: One 15.0 Curie Am-241/Be doubly- encapsulated radioactive sealed source, solid, special form. AEA Technology QSA Inc. Model AMN.CY19. Source Serial Number 59458B.

One 2.0 Curie Cs-137 doubly-encapsulated radioactive sealed source, solid, special form. AEA Technology QSA, Inc. Model CDC.CY13. Source Serial Number 22854B.

Logging sources held within the source ports contained within the sidewalls of heavy pipe wall Measurement While Drilling (MWD) logging tools.  
Sources threaded into the source ports and torqued

down.

Two Energy Compensation Sources (ECS) were contained within the detector assembly installed in the density logging tool:

One 97.92 nanoCurie Cs-137 ECS source, Eckert & Ziegler Model IND1402. Source serial number 124725.

One 109.7 nanoCurie Cs-137 ECS source, Eckert & Ziegler Model IND1402. Source serial number F5-642.

Immobilization method:

1,427 ft. cement plug on top of the fish. The cement plug also serves as the kickoff device.

Results of Efforts to Immobilize and set sources in place:

Abandonment procedure successfully completed on 30 November 2014

Depth of Well:

26,799 ft. MD

Depth of Bottom of Fish:

26,778 ft. MD

Depth of Sources:

Am-241/Be source located at 26,647 ft. MD  
Cs-137 sources located at 26,628 ft. MD

Depth of Top of Fish:

25,372 ft. MD

Depth of Bottom of Cement Plug:

26,799 ft. MD

Depth of Top of Cement Plug:

25,483 ft. MD

Description of Recovery Attempts:

11/20/14 02:15 – 07:30 WHILE DRILLING WITH 15.2 PPG SOBM, OBSERVED INCREASE IN ACTIVE SYSTEM WITH NO INCREASE IN RETURN FLOW. PICK UP OFF BOTTOM FROM 26,799' TO 26,765' AND SPACE OUT TOOL JOINT IN BOP WHILE SLOWING ROTARY TO 5 RPM. SHUT DOWN MUD PUMPS. LINE UP ON TRIP TANK, OBSERVED 16.9 BARREL INCREASE IN TRIP TANK VOLUME. AT 02:30 HRS. SHUT DOWN ROTARY. CLOSE UPPER ANNULAR AND OPEN LOWER CHOKE FAIL SAFES. MONITOR PRESSURES ON WELL HEAD, SHUT IN DRILL PIPE AND SHUT IN CASING PRESSURE EVERY MINUTE. 11/20/14 07:30 – 12:00 AT 07:45 BRING PUMPS ON LINE IN 2 SPM INTERVALS ON MUD PUMP #3 TO 20 STKS/MIN. (KILL RATE SPEED USING THE DRILLER'S METHOD) USING 15.2 PPG SOBM WHILE KEEPING CASING PRESSURE CONSTANT. LET PRESSURE STABILIZE ON DRILL PIPE AND

SWITCHED OVER TO DRILL PIPE PRESSURE GAUGE, CONTINUE TO CIRCULATE KICK OUT OF WELL BORE HOLDING DRILL PIPE WITH 1,150 PSI TO 1,250 PSI AT 20 SPM. 11/20/14 12:00 – 00:00 WITH WELL SHUT IN ON UPPER ANNULAR, CONTINUED CIRCULATING INFLUX OUT OF WELL BORE PUMPING 15.2 PPG SOBMD DOWN DRILL STRING AT 100 GPM TAKING RETURNS THROUGH #1 CHOKE AND MANIPULATING DRILL PIPE PRESSURE FROM 1,150 PSI TO 1,250 PSI BY MAKING AUTO CHOKE ADJUSTMENTS ACCORDINGLY, WHILE MONITORING RISER ON TRIP TANK, RISER STATIC. 11/21/14 00:00 – 12:00 WITH WELL SHUT IN ON UPPER ANNULAR, CONTINUED CIRCULATING INFLUX OUT OF WELL BORE PUMPING 15.2 PPG SOBMD DOWN DRILL STRING AT 100 GPM (20 SPM) INCREASE PUMP RATE TO 30 SPM PUMPING 15.2 PPG SOBMD DOWN DRILL STRING AT 150 GPM MANIPULATING DRILL PIPE PRESSURE FROM 1,250 PSI TO 1,265 PSI BY AUTO CHOKE ADJUSTMENTS, WHILE MAKING PREPARATIONS TO MUD SYSTEM FOR UPCOMING KILL MUD CIRCULATIONS. TREATING ACTIVE PIT #11 TO MAINTAIN WEIGHT. ACTIVE SYSTEM STATIC AND RISER VOLUME STATIC. 11/22/14 00:00 – 03:30 WITH WELL SHUT IN ON UPPER ANNULAR, CONTINUED PUMPING 15.2 PPG SOBMD DOWN DRILL STRING AT 150 GPM (30 SPM) MANIPULATING DRILL PIPE PRESSURE FROM 1,250 PSI TO 1,265 PSI BY AUTO CHOKE ADJUSTMENTS WHILE PREPARING MUD PITS FOR KILL MUD OF 15.4 PPG. 11/22/14 03:30 – 07:00 BEGIN PUMPING 15.4 PPG KILL MUD AT 30 SPM WITH 1,225 PSI INITIAL CIRCULATING PRESSURE 11/22/14 07:30 – 00:00 WITH WELL SHUT IN ON UPPER ANNULAR, CONTINUED CIRCULATING 15.4 PPG KILL MUD UP ANNULUS AT 150 GPM (30 SPM) TAKING RETURNS THROUGH #1 CHOKE. 11/23/14 00:00 – 08:00 WITH WELL CLOSED IN ON UPPER ANNULAR, CONTINUED TO FLOW CHECK WELL ON OPEN CHOKE, WEIGHED UP PIT #12 TO 15.5 PPG KILL MUD. WITH OPEN CHOKE, BEGIN PUMPING 15.5 PPG KILL MUD, STAGING PUMPS UP TO 30 SPM WITH 1,075 PSI INITIAL CIRCULATING PRESSURE FOLLOWING BP PROCEDURE 11/23/14 08:00 – 00:00 WITH WELL SHUT IN ON UPPER ANNULAR, CONTINUED CIRCULATING 15.5 PPG KILL MUD UP ANNULUS AT 150 GPM (30 SPM) 11/24/14 00:00 – 04:00 CONTINUE TO MONITOR AND RECORD TRIP TANK READINGS EVERY

MINUTE FOR FLOW, WELL STATIC. PREPARE TO DISPLACE RISER FROM 15.1 PPG SOB M TO 15.5 PPG SOB M AS PER "PROCEDURE AMENDMENT #7 OPEN WELL AFTER NO FLOW DURING KILL OPERATION". DISPLACE RISER THROUGH BOOST LINE FROM 15.1 PPG SOB M TO 15.5 PPG SOB M AT 600 GPM WITH 1,545 PSI. 11/24/14 04:00 – 08:30 SWEEP BOP DOWN KILL LINE, UP GAS BLEEDS, THROUGH MGS AT 320 GPM WITH 937 PSI. PUMP 1.5 TIMES CHOKE LINE PLUS BOP VOLUME. NO GAS OBSERVED AT SURFACE. SHUT DOWN PUMP. OPEN #5 RAM. CLOSE KILL LINE FAIL SAFES. AT 0430 HRS. LINE UP MINI TRIP TANK TO WELL BELOW UPPER ANNULAR AND PERFORM FLOW CHECK. WELL STATIC OPEN UPPER ANNULAR (24 SEC, 58.2 GAL.) AND PERFORMED 15 MINUTE FLOW CHECK. LOSS .32 BBLs. DRILL STRING FREE. 11/24/14 08:30 – 00:00 CIRCULATE 1.5 TIMES BOTTOMS UP WHILE ROTATE AND RECIPROCATATE DRILL STRING. ROTATE AT 15 RPM WITH 7-8K TORQUE. PUMP AT 350 GPM WITH 1,978 PSI. 11/25/14 00:30 – 05:30 CIRCULATE BOTTOMS UP AT 26,765' PUMPING DOWN DRILL STRING WITH 15.5 PPG SOB M AT 350 GPM WITH 1,858 PSI, RECIPROCATED AND ROTATED AT 15 RPM WITH 6-7K. P/U 855K, S/O 845K. MONITORING FOR GAINS OR LOSSES. 11/25/14 05:30 – 12:00 PUMP OUT OF THE HOLE AT 10 MINUTES A STAND FROM 26,765' TO 26,630'. RACK BACK 1 STAND. WEATHERFORD DROP 10 RFID TAGS TO OPEN REAMER. P/U=880K, S/O=823K. PUMPED AT 350 GPM WITH 1,858 PSI AT 4,393 STKS, REDUCE PUMPS TO 300 GPM WITH 1,490 PSI. NO INDICATION REAMER OPENED. PERFORMED FLOW BACK CHECK AS PER HOUSTON WELL CONTROL TEAM AT 26,624' RECORDING ACTIVE VOLUME AND FLOW BACK RATE READINGS EVERY MINUTE. 11/25/14 12:30 – 00:00 LINED UP AND MONITORED WELL BORE ON THE TRIP TANK RECORDING TRIP TANK VOLUME AND FLOW RATE EVERY MINUTE. CIRCULATED WEATHERFORD RFID REAMER OPEN TAGS PUMPING 15.5 PPG SOB M DOWN DRILL STRING AT 350 GPM WITH 1,930 PSI DECISION MADE TO WEIGHT UP TO 15.6 PPG. CIRCULATE WEATHERFORD RFID CLOSE TAGS PUMPING DOWN DRILL STRING WITH 15.6 PPG SOB M AT 500 GPM WITH 3,420 PSI WITH NO INDICATION OF REAMER CLOSING, CONTINUE CIRCULATING 15.6 PPG SOB M 11/26/14 00:00 – 12:00 CIRCULATE 11/26/14 12:00 – 14:30 DOWNLINK BALLOON TEST. PERFORM FLOW CHECK . TOOK SLOW CIRULATING RATES.

11/26/14 14:30 – 22:30 PUMP OUT, SAW LOSS  
RETURNS SHUT IN WELL PUMP BASE OIL DOWN  
KILL LINE MONITORING WELL 11/27/14 - Prepare  
for cement job 11/28/14 - Cement BHA / waiting 36 hrs  
for cement to dry 11/29/14 -Prep for wireline / Wait on  
cement 11/30/14 - Sever pipe operations.

Warning Plaque:

A permanent identification warning plaque will be fabricated and provided to BP Exploration & Production Inc. for mounting at the wellhead as practicable. See Attachment 1 for a representation of the plaque to be provided.

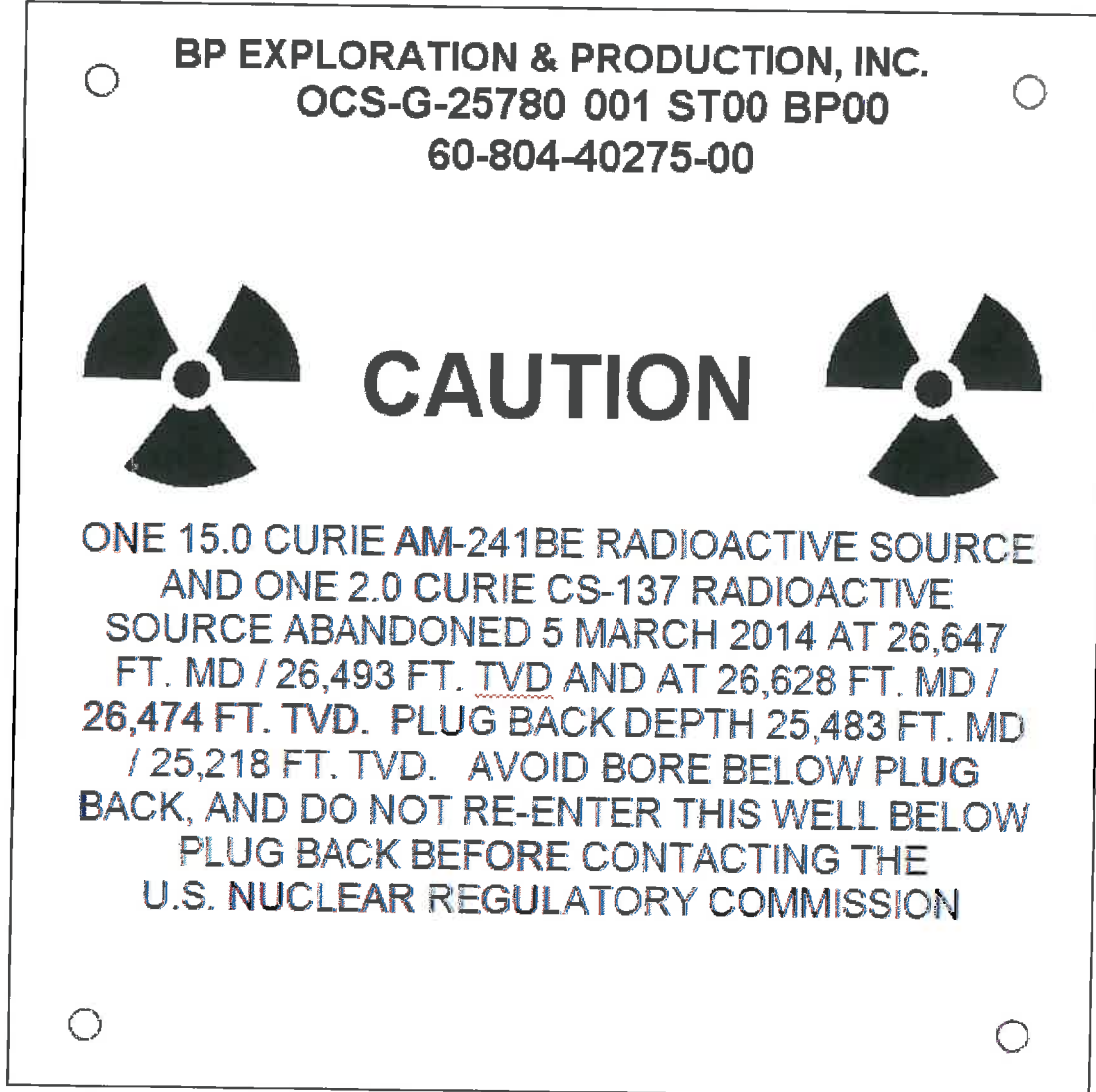
Sincerely,



Steve Woods  
Sr. Radiation Safety Officer  
Halliburton Energy Services, Inc.  
Email: [Steve.Woods@Halliburton.com](mailto:Steve.Woods@Halliburton.com)

Attachment: (1) Representation of Warning Plaque

ATTACHMENT 1



*Representation of Permanent Warning Plaque*