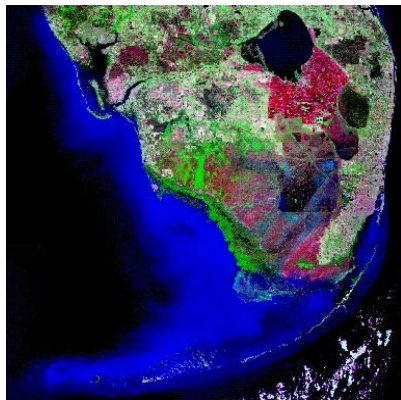




USGS Home
 Contact USGS
 Search USGS

Hydrographic Internet Map Service Data Library

◆ USDOl ◆ USGS ◆ Florida Water Science Center ◆ Hydrographic Internet Map Service ◆ Map Service Data Library ◆ Map Service Help



ABOUT THIS SITE

[Site Map](#)

USGS GEOGRAPHIC DATA

[Frequently Asked Questions](#)
[Usage of data](#)

RELATED GEOGRAPHIC DATA SOURCES

National Sites

- [Federal Geographic Data Committee](#)
- [Geospatial One Stop](#)
- [National Geospatial Program](#)
- [The National Map](#)
- [The National Map Seamless Server](#)
- [USGS Maps, Imagery, and Publications](#)

State Sites

- [FDOT TranStat](#)
- [Florida Geographic Data Library](#)
- [LABINS](#)

Local Sites

- [Broward County GIS](#)
- [Miami-Dade County GIS](#)

USGS Florida Water Science Center, Digital Spatial Data Sets

Geology

Geophysics

[Biscayne and Surficial Aquifer Systems](#)

Lithology

[Biscayne and Surficial Aquifer Systems Lithology](#)

Hydrology

[Monitoring Stations](#)

Ground Water Hydrology

[Biscayne and Surficial Aquifer Systems](#)

Water Quality

[Saltwater Intrusion, Biscayne and Surficial Aquifer Systems](#)

Geography

[Indexes](#)

[Land Use](#)

Map thumbnail

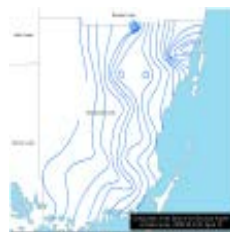
Archived shapefile

Metadata

Geology: Biscayne and Surficial Aquifer Systems Lithology



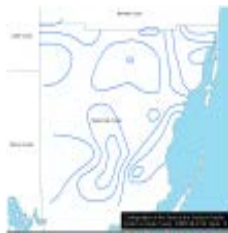
[dade_biscayne_limit_west_arc \(\)](#) [Approximate Western Limit of the Biscayne Aquifer in Dade County, WRIR 90-4108, figure 16](#)



[dade_config_base_biscayne_arc \(\)](#) [Configuration of the Base of the Biscayne Aquifer in Dade County, WRIR 90-4108, figure 16](#)



[dade_config_base_glime_arc \(\)](#) [Configuration of the Base of the Gray Limestone Aquifer in Dade County, WRIR 90-4108, figure 15](#)



[dade_config_base_surficial_arc \(\)](#)  [Configuration of the Base of the Surficial Aquifer System in Dade County, WRIR 90-4108, figure 13](#)



[dade_config_top_glime_arc \(\)](#)  [Configuration of the Top of the Gray Limestone Aquifer in Dade County, WRIR 90-4108, figure 14](#)



[glime_alt_uca_arc \(\)](#)  [Altitude of the top of the upper confining unit of the gray limestone aquifer, southern Florida, 1998, WRIR 99-4213 figure 21](#)

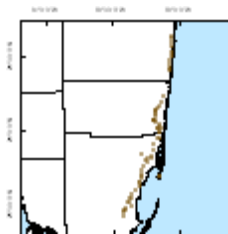


[glime_altbase_arc \(\)](#)  [Altitude of the base of the gray limestone aquifer, southern Florida, 1998, WRIR 99-4213 figure 15](#)



[glime_alltop_arc \(\)](#)  [Altitude of the top of the gray limestone aquifer, southern Florida 1998, WRIR 99-4213 figure 14](#)

Geophysics: Biscayne and Surficial Aquifer Systems

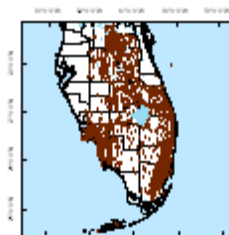


[inductionlog_point \(\)](#)  [Induction well log locations in southeastern Florida](#)



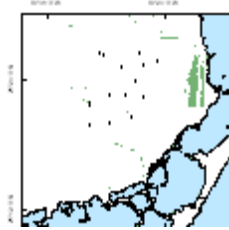
[interface1995_point \(\)](#)  [Geophysical monitoring wells in Biscayne aquifer, Dade county, Florida, 1995, WRIR 96-4285](#)

Hydrology: Monitoring Stations



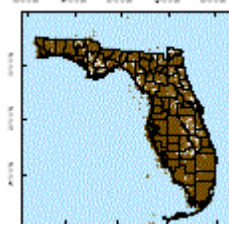
[dbhydro_well_point \(\)](#)

[Groundwater Wells in DBHYDRO inventory, retrieved June 2008](#)



[fkaa_well_point \(\)](#)

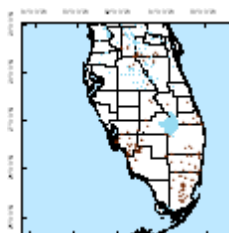
[Stations operated or monitored by Florida Keys Aqueduct Authority, Miami-Dade County, Florida](#)



[nwis_mia_point \(\)](#)

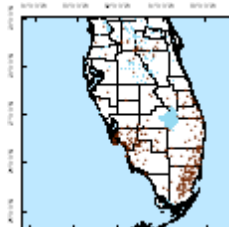
[National Water Information System \(NWIS\) Data Collection Points](#)

Groundwater Hydrology: Biscayne and Surficial Aquifer Systems



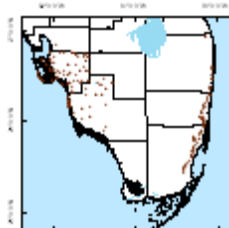
[ddn_sites \(\)](#)

[Selected Near-Real-Time Water-Level Monitoring Stations, Florida](#)



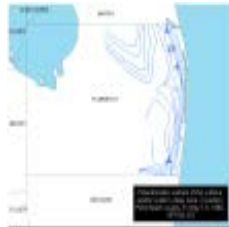
[edl_sites \(\)](#)

[Electronic Data Logger Stations for Water-Level Elevation Monitoring, Central and Southern Florida](#)



[gwl_sites \(\)](#)

[Periodic Water-level Measurement Stations, Florida](#)



[pot_pb_19890501_arc \(\)](#)

[Potentiometric surface of the surficial aquifer system, deep zone, in eastern Palm Beach county, FL, May 1-5, 1989, OFR 92-102](#)

[wt_biscayne_brwd_19880426_arc \(\)](#)

[Altitude of the water table in the Biscayne aquifer, Broward county, Florida, April 26-29,](#)



1988, OFR 92-31

[wt_biscayne_dade_19780400_arc \(!\[\]\(dfbd6b3763a6d1d9afaa974f64e2e4b5_img.jpg\) \)](#) [Altitude of water table, Biscayne aquifer, Dade county, Florida, April 1978, OFR 81-225](#)



[wt_biscayne_dade_19781000_arc \(!\[\]\(23d9fc146e83b5c3013cfa32c784f8d5_img.jpg\) \)](#) [Altitude of water table, Biscayne aquifer, Dade county, Florida, October 1978, OFR 81-327](#)



[wt_biscayne_dade_19790300_arc \(!\[\]\(ec9132f1d27c8919987d92907322654d_img.jpg\) \)](#) [Altitude of water table, Biscayne aquifer, Dade county, Florida, March 1979, OFR 81-647](#)



[wt_biscayne_dade_19800500_arc \(!\[\]\(aa53ad6fea213b8b2226d3077e30533a_img.jpg\) \)](#) [Altitude of water table, Biscayne aquifer, Dade county, Florida, May 1980, OFR 81-808](#)



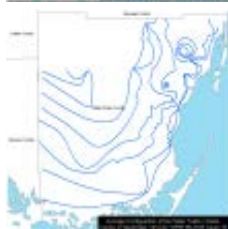
[wt_biscayne_dade_19880425_arc \(!\[\]\(758ebdf4629c903da74c2e079717ae32_img.jpg\) \)](#) [Altitude of the Water Table in the Biscayne Aquifer, Dade County, Florida, April 25-28, 1988, OFR 92-32](#)



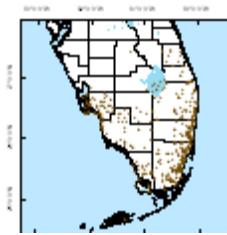
[wt_dade_surficial_dry_74_82_arc \(!\[\]\(626ce8ac21792b9405bfddfea8e0c96a_img.jpg\) \)](#) [Average Configuration of the Water Table in Dade County in April based on the period 1974-82, WRIR 90-4108, figure 19](#)



[wt_dade_surficial_wet_74_82_arc \(!\[\]\(248b91fcdac4810ffd15cf33fb6aec6f_img.jpg\) \)](#) [Average Configuration of the Water Table in Dade County in September 1974-82, WRIR 90-4108, figure 18](#)



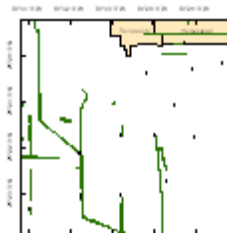
[chloride_range \(!\[\]\(c1168d6a8b365d11e842ece304635fa7_img.jpg\) \)](#) [Chloride sample locations and data](#)



[ranges, selected sites in Florida, south of 27.5 N](#)

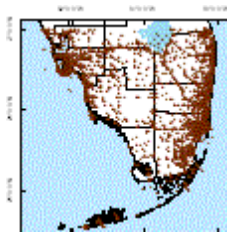
[fkaa_chlorides](#) (🌐)

[Chloride sampling locations, Miami-Dade County, Florida, furnished by Florida Keys Aqueduct Authority](#)



[nwis_chloride_range](#) (🌐)

[Range and Extent of Chloride Monitoring Stations in Southern Florida, south of 27N latitude](#)



Saltwater Intrusion, Biscayne and Surficial Aquifer Systems



[hms_cl_19791005_arc](#) (🌐)

[Altitude of water table and saline-water front, Hialeah-Miami Springs well field area, Dade County, FL, October 5, 1979, chloride contours, OFR 80-559](#)



[hms_cl_19780503_arc](#) (🌐)

[Altitude of water table and saline-water front, Hialeah-Miami Springs well field area, Dade County, FL, May 3, 1978, chloride contours, OFR 80-588](#)



[hms_cl_19781013_arc](#) (🌐)

[Altitude of water table and saline-water front, Hialeah-Miami Springs well field area, Dade County, FL, October 13, 1978, chloride OFR 80-8](#)



[hms_cl_19800512_arc](#) (🌐)

[Altitude of water table and saline-water front, Hialeah-Miami Springs well field area, Dade County, FL, May 12, 1980, chloride contours, OFR 80-1211](#)

[salt_ext_biscayne_1984_arc](#) (🌐)

[Approximate inland](#)

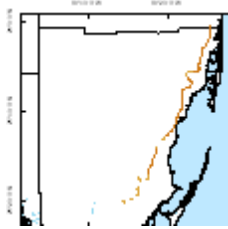


[extent of saltwater interface in the Biscayne aquifer in 1984, Dade County, FL, WRIR 96-4285](#)



[salt_ext_biscayne_1996_arc \(\)](#)

[Approximate inland extent of saltwater interface in the Biscayne aquifer in 1995, Dade County, FL, WRIR 96-4285](#)



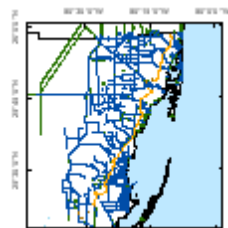
[salt_ext_biscayne_2008_arc \(\)](#)

[Approximate inland extent of saltwater interface in the Biscayne aquifer in 2008, Miami-Dade County, FL](#)



[salt_int_1998_arc \(\)](#)

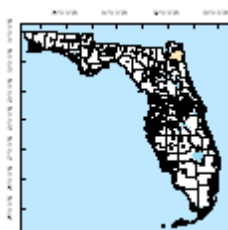
[Approximate inland extent of the saltwater interface in the surficial aquifer system in 1997-98, Palm Beach, St. Lucie, Martin, WRIR 99-4214](#)



[SaltlineBiscayne2011_arc \(\)](#)

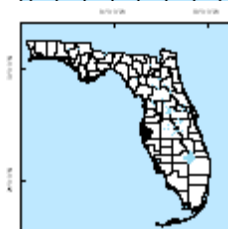
[Approximate inland extent of saltwater interface in the Biscayne aquifer in 2011, Miami-Dade County, FL](#)

Mapping: Indexes



[cities2000_polygon \(\)](#)

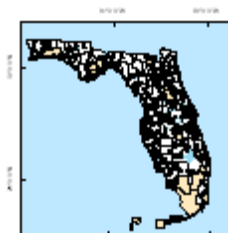
[Incorporated Places/Census Designated Places, 2000 \(original data from U.S. Census Bureau\)](#)



[counties_state_polygon \(\)](#)

[Florida Counties \(data adapted from FGDL and other sources\)](#)

Mapping: Land Use



[aimsLandmarks \(\)](#)

[Internet mapping service landmarks data set \(metadata](#)



[md_wpa2006_polygon.htm \(\)](#)

[Wellfield Protection Areas in Miami-Dade County, Florida, September 2006](#)

[Accessibility](#) [FOIA](#) [Privacy](#) [Policies and Notices](#)

[U.S. Department of the Interior](#) | [U.S. Geological Survey](#) | [Florida Water Science Center](#)

URL: <http://www.envirobase.usgs.gov/FIGisData/FLWSC/index.html>

Page Contact Information: Florida Water Science Center Webmasters, GS-W-FL_Webmasters@usgs.gov

Page last modified: Friday, April 08, 2011

