

Containment Protection & Release Reduction with Mark I & II Containments Rulemaking

December 11, 2014

Meeting Ground Rules

- Limit interruptions:
 - Turn off cell phones.
 - Minimize side conversations.
- Speak one at a time.
- Identify yourself when speaking.
 - Please state your name, organization, and your comment or question.
 - If you are in the meeting room please speak loud enough for everyone on the bridgeline to hear.
- Be respectful of other speakers/participants.
- If participating by webinar please use the:
 - Chat function to send questions or
 - Ask questions via the bridgeline at the designated opportunities.
 - Please mute your phone (*6).

Meeting Agenda

- 9am – 9:10am: Welcome/Introductions
- 9:10am – 9:30am: NRC overview and path forward of the CPRR rulemaking
- 9:30am – 10:30am: NEI update of information since last presentation and feedback on performance criteria presented by the NRC staff
- 10:30am – 10:45am: Break
- 10:45am – 11:30am: Continuation of NEI presentation
- 11:30am – 11:50am: Public comments/discussion
- 11:50am – 12:00am: Closure

CPRR Documentation

- Today's meeting is being transcribed and the meeting transcript will be included in the meeting summary.
- The meeting slides will be posted on www.regulations.gov 3 business days after today's meeting.
- The meeting summary will be posted on www.regulations.gov within 30 calendar days after today's meeting.
- Search for docket ID "**NRC-2013-0075**" on www.regulations.gov for these and other containment protection and release reduction rulemaking (CPRR) related documents.

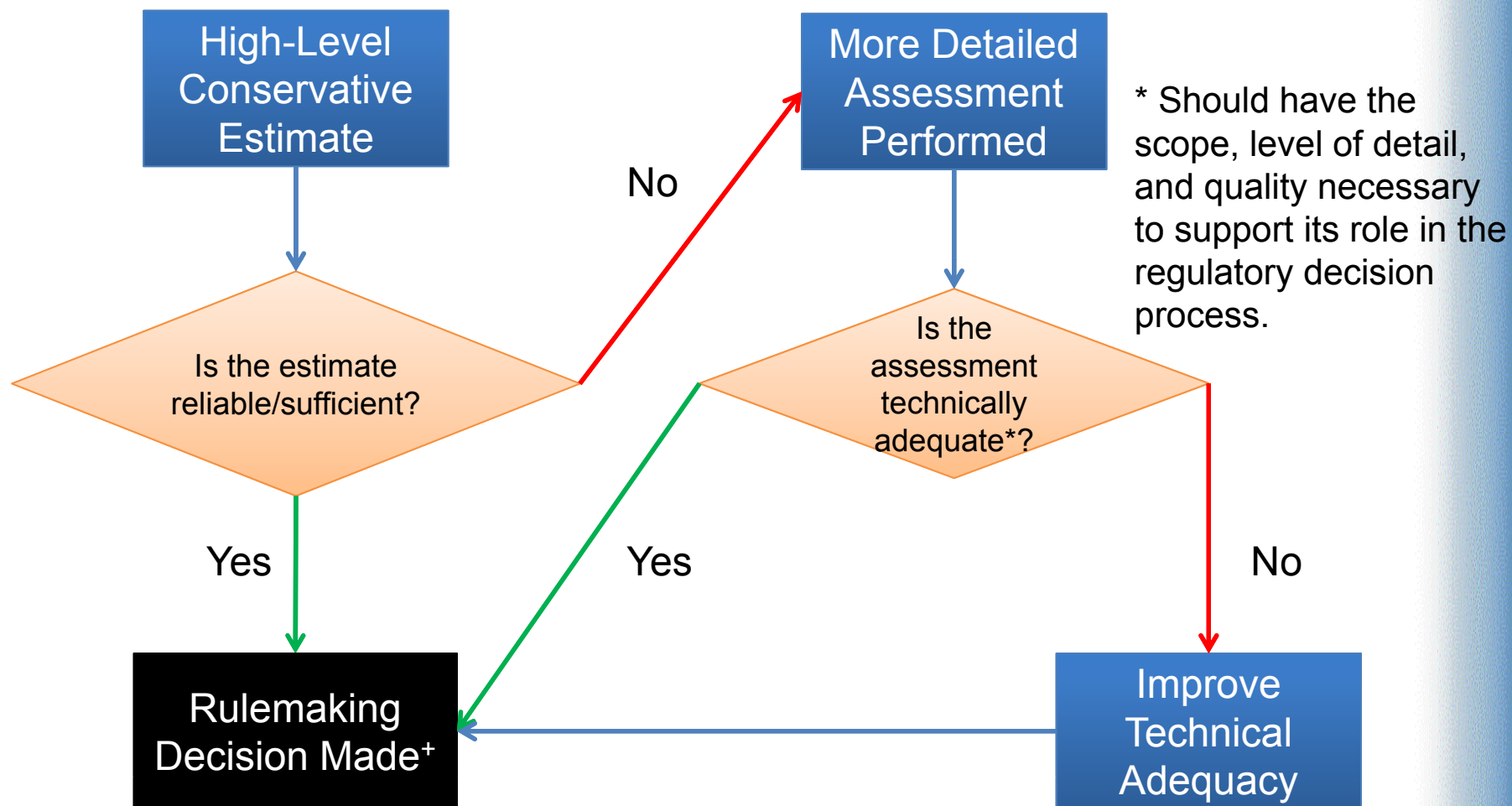
CPRR Background

- **SECY-12-0157**
 - Recommended filters based on qualitative considerations
- **SRM-SECY-12-0157**
 - Ensure that performance and risk of filtering strategies and filters are fully evaluated
 - Fully explore requirements associated with measures to enhance the capability to maintain containment integrity and to cool core debris
 - Examine multiple performance criteria
 - Any policy issues should be raised to Commission
 - Developed a separate paper on use of qualitative considerations

CPRR Background (cont'd)

- The NRC staff has developed a comprehensive probabilistic risk assessment (PRA) methodology to support the CPRR rulemaking and held multiple public meetings since the SRM.
- COMSECY-13-0030 on Expedited Spent Fuel Pool Transfer was submitted and voted on by the Commission.
 - Reaffirmed Safety Goal Policy Statement and determined that risk was low enough that it did not rise to a “substantial safety enhancement”.
- SECY-14-0087 on Qualitative Considerations

Process for CPRR Rulemaking Options for Disposition

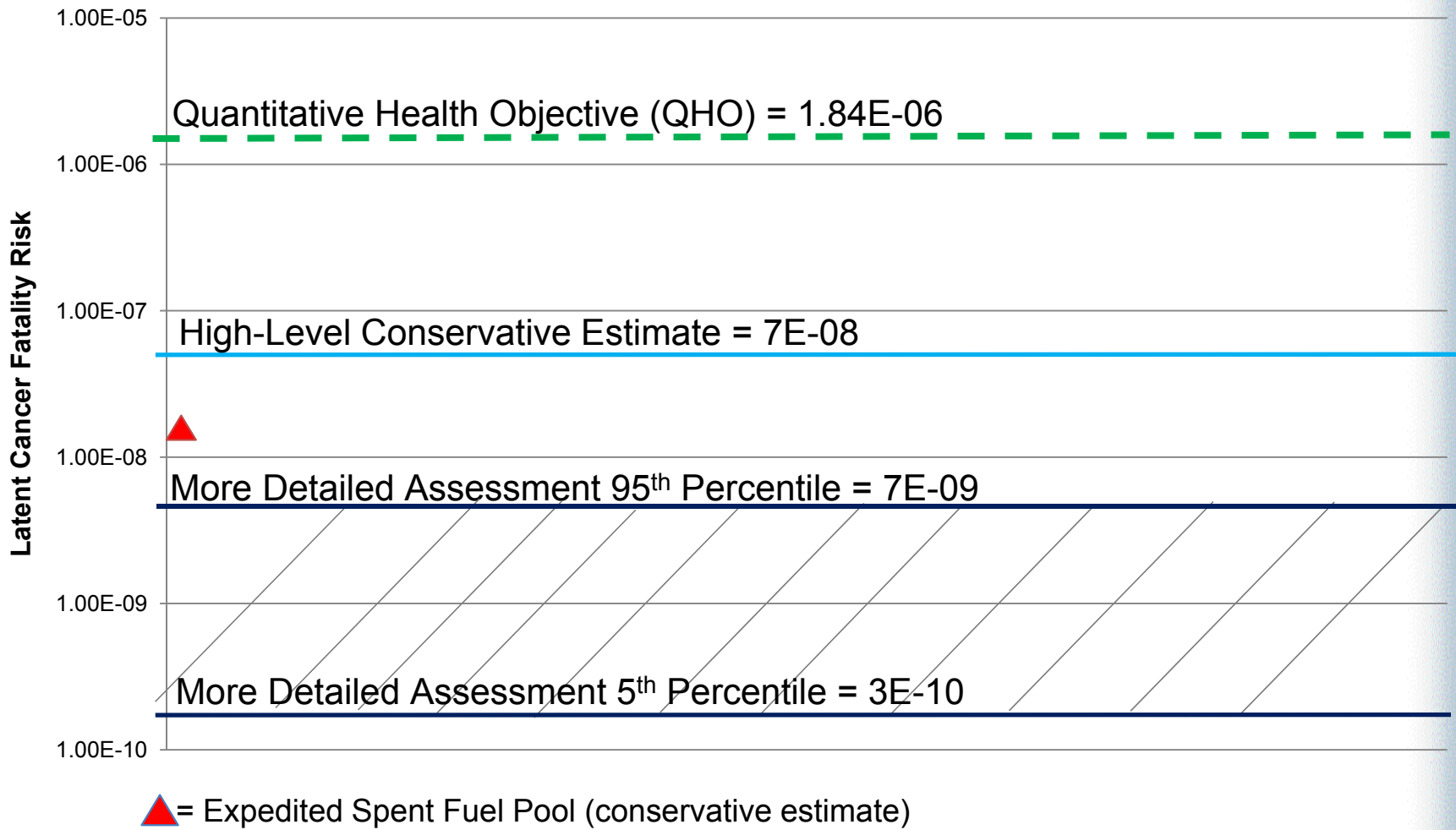


+ Considers quantitative and qualitative information, as appropriate.

Assumptions for High-Level Conservative Estimate

- Highest extended loss of AC power (ELAP) frequency of BWR Mark I and II
- Highest conditional individual latent cancer fatality risk (ILCFR) release
- Highest habitability criterion
- Provides conservative estimate of possible benefit of any CPRR rulemaking alternative

High-Level Conservative Results



CPRR Next Steps

- The NRC staff will be generating a Commission paper with preliminary conclusions and recommended path forward.
 - Rulemaking to make the requirements of Order EA-13-109 (i.e., severe accident capable containment vents) generically applicable.
 - Discontinue aspects of the CPRR rulemaking
- Additional meetings with the Advisory Committee on Reactor Safeguards will be held on the Commission paper.
- Additional public meetings will be held before the paper is sent to the Commission, as needed.

CPRR Public Meeting

NEI Presentation

CPRR Public Meeting

Public Insights and Questions

Closing Remarks

Robert.Beall@nrc.gov

301-415-3874