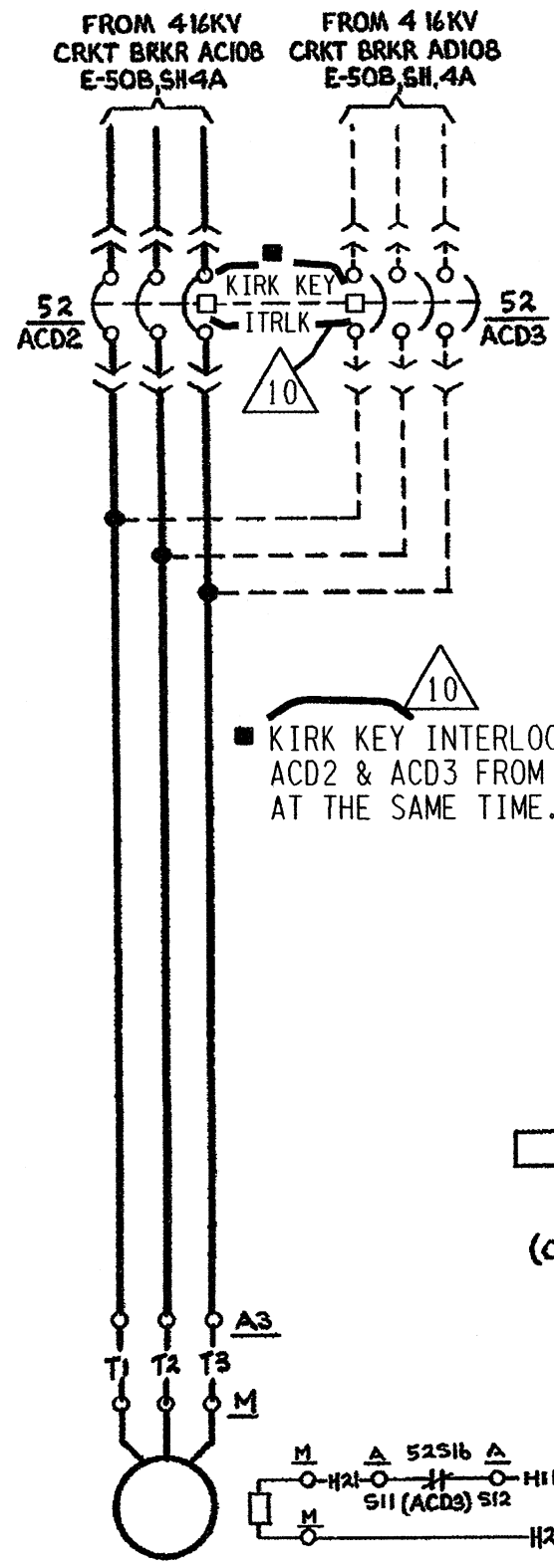
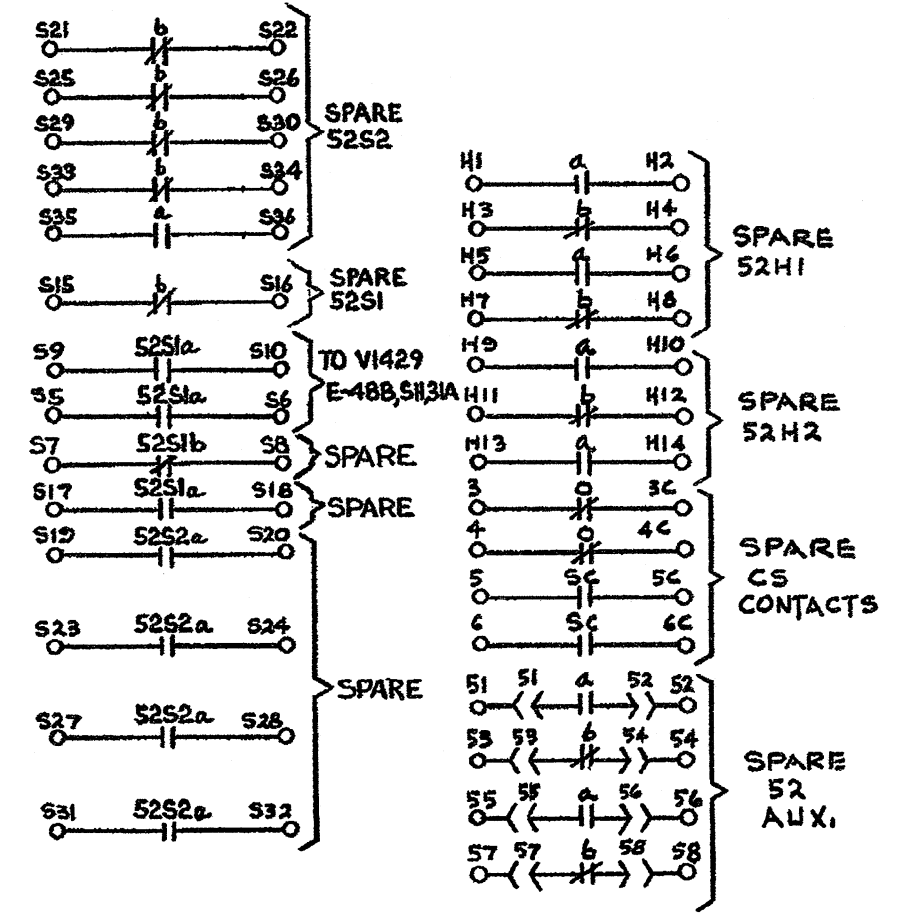
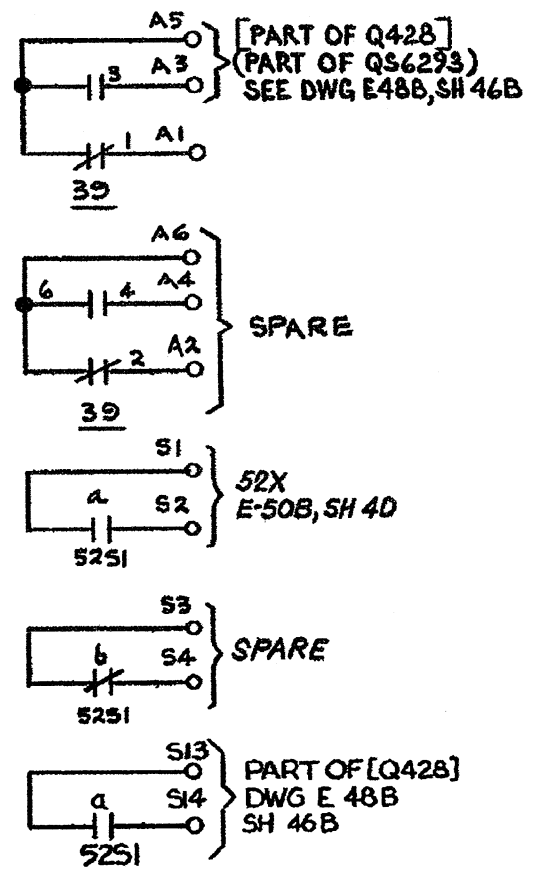
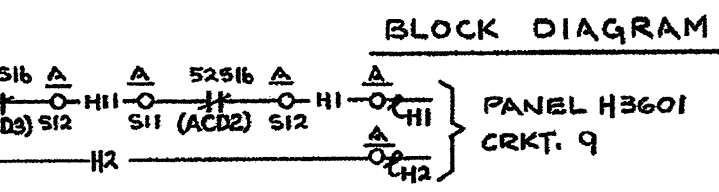
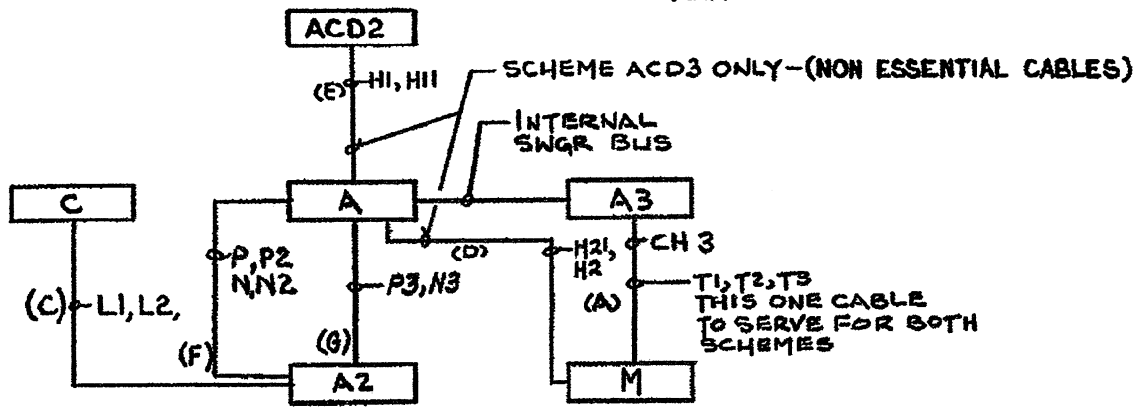


10	INC. DUN 10-0044-001-003 REV.00	REV	DESCRIPTION
9	INC. DUN 07-0159-00-2 REV.0 (REDRAWN)	REV	ISSUED FOR CONSTRUCTION
0		REV	



10  
 KIRK KEY INTERLOCK PREVENTS ACD2 & ACD3 FROM BEING CLOSED AT THE SAME TIME.



DEVICE DESCRIPTION  
 39 — SWGR CLOSING SPRING FAIL MONITOR RELAY.

- NOTES
- FOR BRKR. CONTROL SCHEME SEE DWG. E-50, SH. 4D.
  - FOR GENERAL NOTES SEE DWG. E-50B INDEX SHEET.
  - FOR C.S. DETAIL SEE DWG. E-30B, SH. 10, FIG. 2.
  - FOR SWGR. INTERNAL WIRING SEE WEST DWG. 1208F69 (FP-E-38-3) & 1208F70 (FP-E-38-4).

THIS DWG. WAS REDRAWN ON CAD AND SUPERSEDES REVISION 8.

**DAVIS-BESSE NUCLEAR POWER STATION**  
 THE TOLEDO EDISON COMPANY  
 THE CLEVELAND ELECTRIC ILLUMINATING COMPANY

**ELEMENTARY WIRING DIAGRAMS**  
**COOLING WATER SYSTEM**  
**COMPONENT CLNG. PMP. 3**

BECHTEL COMPANY	JOB NO	DRAWING NO	REV
	<b>7749</b>	<b>E-50B SH. 4C</b>	<b>10</b>

SCHEME No	S/L No	CHANNEL	BUS	SWGR UNIT	WIRE PREFIX AT MAIN CONT. PNL	IL	EQUIPMENT							
							C	A	A2	A3	M			
ACD2	O16	1	C1	2	CD1	IL6225C	C5715	ACD2	ACIOB	*ACD1				
ACD3	O16	2	D1	3	CD2	IL6235C	C5715	ACD3	ADIOB					MP0433

\* — SWGR. UNIT NO 1. MOTOR FEEDER TERMINAL COMPARTMENT AT WHICH THE OUTGOING TERMINALS OF BRKRS ACD2 & ACD3 ARE TIED TOGETHER IN A COMMON BUS FROM WHICH THE MOTOR IS FED.