



South Atlantic Fishery Management Council

Conserving and managing America's fisheries from three to 200 miles off the coasts of North Carolina, South Carolina, Georgia and Florida.

Mapping and GIS Data

[Home](#) | [Ecosystem Management](#) | [Mapping and GIS Data](#)

Online Mapping

SAFMC Habitat and Ecosystem ATLAS

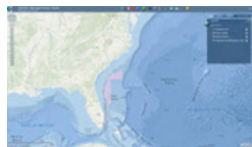
The Fish and Wildlife Research Institute (FWRI) has worked closely with SAFMC staff to compile, maintain, and distribute GIS data, imagery, and documents relevant to ecosystem management in their jurisdiction. Over the last few years, the Council has incorporated ArcGIS for Server to enhance their web mapping applications. The new SAFMC Habitat and Ecosystem Atlas is a comprehensive site designed to replicate the data and tools of the long standing Internet Map Server (IMS). The new Atlas will allow users to view a variety of map services supporting fishery management issues in one viewer:

- Essential Fish Habitat (EFH) – displays EFH and EFH-HAPCS for SAFMC managed species and NOAA Fisheries Highly Migratory Species
- Fisheries - displays Marine Resources Monitoring, Assessment, and Prediction (MARMAP) and Southeast Area Monitoring and Assessment Program-South Atlantic (SEAMAP-SA) data
- Managed Areas- displays a variety of regulatory boundaries (SAFMC and Federal) or management boundaries within SAFMC's jurisdiction
- Habitat – displays habitat data collected by SEADESC, Harbor Branch Oceanographic Institute (HBOI) and Ocean Exploration dives, as well as the SEAMAP shallow and ESDIM deepwater bottom mapping projects, and scientific cruise data
- Multibeam Bathymetry - displays a variety of multibeam data sources and scanned bathymetry charts
- Nautical Charts – displays coastal, general, and overview nautical charts for the SAFMC's jurisdictional area

The SAFMC Habitat and Ecosystem Viewer also includes options to view map services hosted by the NOAA Coastal Services Center:

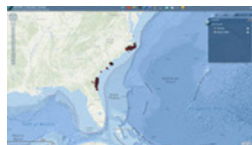
- South Carolina Wind Energy - displays many of the data layers being used by the South Carolina Renewable Energy Task Force in their decision making process.
- Estuarine Bathymetry – displays bathymetry and shaded relief rasters for many estuaries of the South Atlantic Bight

Web Mapping Applications



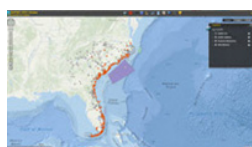
SAFMC Managed Areas

This application provides users an opportunity to view managed areas in the SAFMC's jurisdiction. The application contains data for the Allowable Golden Crab Fishery Areas, Shrimp Fishery Access Areas, and Deepwater Coral HAPCs. The application also includes SAFMC Restrictions, Marine Protected Areas, Oculina CHAPC, Danger Zones, and other Federal Marine Managed Areas. It requires Flash Player.



SAFMC Fisheries

This application displays fishery independent data collected by the SEAMAP - South Atlantic (SA) component and by the Marine Resources Monitoring, Assessment, and Prediction (MARMAP) program. The application also contains several base layers and data from EcoGIS.



SAFMC EFH

This application displays Essential Fish Habitat (EFH) and Essential Fish Habitat-Habitat Areas of Particular Concern (EFH-HAPCs) for several species under SAFMC's jurisdiction. It also displays EFH for Highly Migratory Species (HMS) managed by NOAA Fisheries

SAFMC GIS Data

Essential Fish Habitat (EFH)

The Sustainable Fisheries Act of 1996, identifying the contribution of habitat loss and degradation on fishery declines, amended the Magnuson-Stevens Act to create a program to protect "essential fish habitat." The statute defined EFH as "those waters and substrate necessary to fish for spawning, breeding, feeding, or growth to maturity." The legislation authorized a regulatory program to provide detailed identification of such habitat and obligatory consultation regarding all fishery and non-fishery activities receiving federal funding, permitting, or authorization that could impact EFH. The Council has taken the first step with the approval of the Habitat Plan identifying and describing in detail EFH for species managed throughout the South Atlantic and with the approval of the Comprehensive Habitat Amendment amending all existing FMPs to include descriptions of EFH and EFH-habitat areas of particular concern (EFH-HAPCs).

EFH for the SAFMC jurisdictional area INCLUDES:

Dolphin-Wahoo EFH	In Progress	Zip File ~21kb
Shrimp EFH	Metadata	Zip File ~46 mb
Spiny Lobster EFH	Metadata	Zip File ~29 mb
Coastal Migratory Pelagics EFH	Metadata	Zip File ~5 mb
Golden Crab EFH	Metadata	Zip File ~51 kb
Snapper Grouper EFH	Metadata	Zip File ~65 mb
Coral, Coral Reefs, Live or Hard Bottom EFH	Metadata	Zip File ~4 mb

EFH-Habitat Areas of Particular Concern

Essential Fish Habitat (EFH) that is particularly important to the long-term productivity of populations of one or more managed species, or particularly vulnerable to degradation, should be identified as "habitat areas of particular concern" (HAPC) to help provide additional focus for conservation efforts. As a result of the Sustainable Fisheries Act Amendment to the Magnuson-Stevens Fishery Conservation and Management Act in 1996 the Councils and the NMFS have been mandated to use an ecosystem approach in managing the Nation's Fisheries. The Council took the first step with the approval of the Habitat Plan identifying and describing in detail EFH for species managed throughout the South Atlantic and with the approval of the Comprehensive Habitat Amendment amending all existing FMPs to include descriptions of EFH and EFH-HAPCs. Due to their important ecological function, areas of the offshore pelagic environments discussed above and the associated benthic habitats represent EFH-HAPCs and were designated as such through previous Council actions.

EFH-HAPCs INCLUDE:

HABITAT	METADATA	SHAPEFILE	GOOGLE EARTH
Dolphin-Wahoo EFH-HAPC	Metadata	Zip File ~8 kb	KMZ
Coastal Migratory Pelagics EFH-HAPC	Metadata	Zip File ~238 kb	KMZ
Shrimp EFH-HAPC	Metadata	Zip File ~2 mb	KMZ
Spiny Lobster EFH-HAPC	Metadata	Zip File ~2.8 mb	KMZ
Snapper Grouper EFH-HAPC	Metadata	Zip File ~28 mb	KMZ
Coral, Coral Reef and Live or Hard Bottom EFH-HAPC	Metadata	Zip File ~2 mb	KMZ
Tilefish EFH-HAPC	In progress	Zip File ~23kb	In progress

Deepwater Coral Habitat Areas of Particular Concern (Coral HAPCs)

Deepwater Coral Habitat Areas of Particular Concern (Deepwater Coral HAPCs) have been designated off the coast of the southern Atlantic states in which the use of specified fishing gear and methods and the possession of coral is prohibited. Within the Deepwater Coral HAPCs, fishing zones have been established that allow continued fishing on the historical grounds for golden crab and deepwater shrimp. This designation protects what is thought to be the largest distribution of pristine deepwater coral ecosystems in the world.

Deepwater Coral HAPCs include:

HABITAT	METADATA	Tab Delimited Coordinates	SHAPEFILE	GOOGLE EARTH
Deepwater Coral HAPCs	Metadata		Zip File ~11kb	KMZ
Cape Lookout		CapeLookout.txt		
Cape Fear		CapeFear.txt		
Stetson-Miami Terrace		StetsonMiamiTerrace.txt		
Pourtales Terrace		PourtalesTerrace.txt		
Blake Ridge Diapir		BlakeRidgeDiapir.txt		
Golden Crab Access Area A		GCAA_A.txt	Zip File ~6kb	KMZ
Golden Crab Access Area B		GCAA_B.txt	Zip File ~2kb	KMZ
Golden Crab Access Area C		GCAA_C.txt	Zip File ~3kb	KMZ
Golden Crab Southern Access Area		GCAA_Southern.txt	Zip File ~3kb	KMZ
Shrimp Fishery Access Area A		SFAA_A.txt	Zip File ~3kb	KMZ
Shrimp Fishery Access Area B		SFAA_B.txt	Zip File ~3kb	KMZ
Shrimp Fishery Access Area C		SFAA_C.txt	Zip File ~3kb	KMZ
Shrimp Fishery Access Area D		SFAA_D.txt	Zip File ~3kb	KMZ

Restricted Gear

The South Atlantic Fishery Management Council's (SAFMC) role is to develop fishery management plans needed to manage fishery resources within the Exclusive Economic Zone (EEZ) extending from state waters (three miles in the south Atlantic) to 200 nautical miles. The 1996 Sustainable Fisheries Act (SFA) was passed by Congress to protect marine fish stocks with requirements to prevent and stop overfishing, minimize bycatch, and protect habitat. These layers geographically represent prohibitions on the use of various gear (to fish for and retain snapper grouper species) within the SAFMC EEZ.

GEAR	METADATA	SHAPEFILE	GOOGLE EARTH
Roller Rig Trawls	Metadata	Zip File ~70kb	KMZ
Sargassum	Metadata	Zip File ~75kb	KMZ
Black Sea Bass Pots	Metadata	Zip File ~30kb	KMZ

Bottom Longlines	Metadata	Zip File ~90kb	KMZ
Fish Traps	Metadata	Zip File ~73kb	KMZ
Octocorals	In Progress	Zip File ~ 48kb	KMZ