



MIAMI-DADE EXPRESSWAY AUTHORITY

3790 N.W. 21 St. Miami, FL 33142 T 305.637.3277 F 305.637.3283

www.mdxway.com

# PROJECT FACT SHEET



## SR 836/Dolphin Expressway Southwest Extension MDX Project No. 83618

### Project Overview

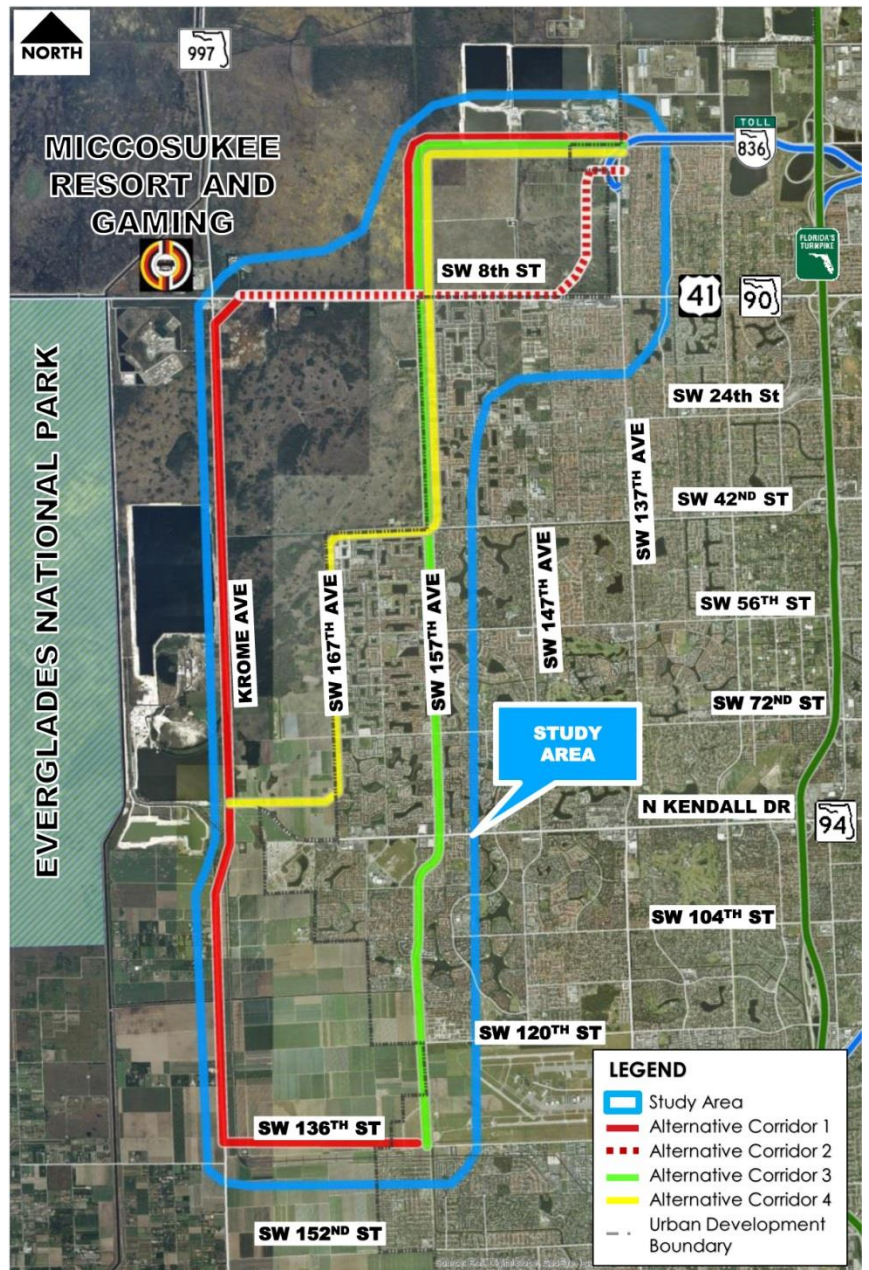
The Miami-Dade Expressway Authority (MDX), in coordination with the Florida Department of Transportation (FDOT), is conducting a Project Development and Environment (PD&E) Study to evaluate the feasibility of a southwest extension of SR 836/Dolphin Expressway from its current terminus at NW 137<sup>th</sup> Avenue in the vicinity of NW 12<sup>th</sup> Street to SW 136<sup>th</sup> Street or some point to the north of SW 136<sup>th</sup> Street, depending on the outcome of the evaluation. The PD&E Study objective is to address the transportation needs of the area and evaluate potential social, natural and physical environmental impacts of the proposed project. The new corridor is envisioned as a multi-modal limited access facility and the goal is to design a cross section that relieves traffic congestion within the area and provides a valid mobility option while providing an opportunity to limit urban expansion to the west.

### Study Area

The proposed study area is located within unincorporated Miami-Dade County and is bounded by NW 12<sup>th</sup> Street to the north, SW 136<sup>th</sup> Street to the south, SW 152<sup>nd</sup> Avenue to the east, and SW 177<sup>th</sup> Avenue (Krome Avenue) to the west.

### Purpose and Need

The southwest area of Miami-Dade County has been the fastest growing area of the county with no additional major transportation infrastructure proposed to accommodate that growth. The Turnpike and the Palmetto Expressway alone cannot address the existing demand or the projected capacity needed to provide mobility in this area. This translates into longer commutes and a negative impact on the quality-of-life for Miami-Dade residents and businesses. A new SR 836/Dolphin Expressway Extension would provide additional north-south connectivity and enhance mobility throughout the area. The project would provide greater accessibility to major activity and employment centers located north and east of the rapidly growing residential areas in the south and west.





MIAMI-DADE EXPRESSWAY AUTHORITY

3790 N.W. 21 St. Miami, FL 33142 T 305.637.3277 F 305.637.3283

www.mdxway.com

# PROJECT FACT SHEET

## Project Goals

- Improve connectivity in the area.
- Improve access to and from major employment, educational and commercial centers.
- Provide north/south expressway access to serve existing and future travel demand.
- Improve hurricane/emergency evacuation routes and travel times.
- Evaluate multimodal transportation opportunities.

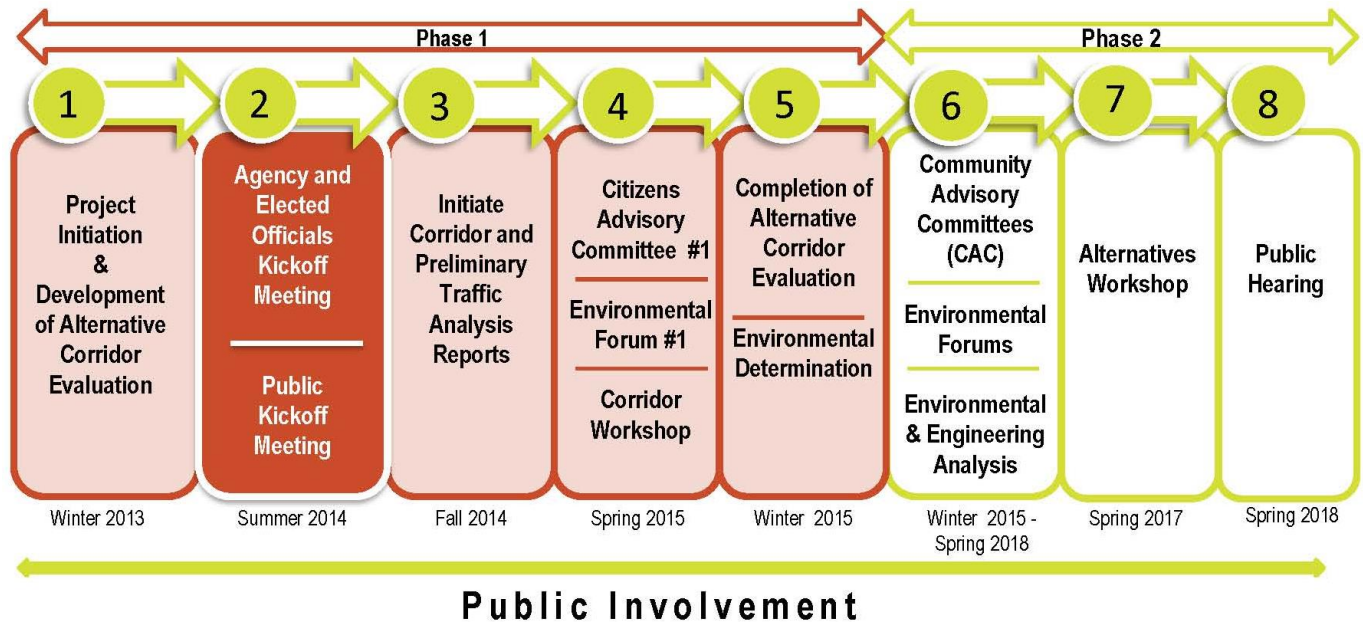
## Public Involvement

MDX is committed to actively engaging the community, businesses, elected officials, as well as, community, civic, environmental organizations, and other interested parties in an ongoing and open dialogue about the SR 836/Dolphin Expressway Extension Study. In addition to regularly scheduled meetings during the course of the study, the public will be able to participate in the Citizens Advisory Committee, a Corridor Workshop and Environmental Forums.

## Project Schedule

Phase 1 - Identify reasonable alternative corridors from a range of alternatives through the Alternative Corridor Evaluation process.

Phase 2 - Detailed evaluation of the corridors identified in Phase 1.



## For More Information:

Contact: Tere Garcia, Public Information Officer

Phone: (786) 277-9292

E-mail: [836SWextension@mdxway.com](mailto:836SWextension@mdxway.com)

Tanpri rele Daphne Antoine nan nimewo 305-551-8100 si ou bezwen enfòmasyon an kreyòl sou pwojè sa a.

Public participation is solicited without regard to race, color, national origin, age, sex, religion, disability or family status. The Miami-Dade Expressway Authority (MDX) operates and maintains five expressways: SR 112/Airport Expressway, SR 836/Dolphin Expressway, SR 874/Don Shula Expressway, SR 878/Snapper Creek Expressway, and SR 924/ Gratigny Parkway. MDX is funded almost entirely by toll revenue and is dedicated to moving Miami-Dade County forward by making your commute safer and more efficient.