

LAW ENGINEERING TEST BORING RECORD

ELEV.	STRATUM DEPTH	VISUAL SOIL DESCRIPTION	D	SR	K	N or CR/RQD	REMARKS
118.0'	0.0'						
	0.2	TOPSOIL					
		Very loose to loose brown clayey and silty fine to medium SAND (SC-SM), damp	1.0	18		3	
			2.5	14		4	
113			5.0	14		5	
			7.5	14		7	
	9.0	Firm to dense brown-tan fine to medium SAND (SP), moist	10.0	12		11	
108							
			15.0	12		19	
103							
		Some coarse sand below 25 feet	20.0	12		25	
98							
			25.0	12		30	
93							
		Loose light gray to tan clayey and silty fine SAND (SC-SM), moist	30.0	10		36	
88							
	34.0		35.0	10		9	
83							

@ 33', 2-13-89

D - Sample depth (Ft.)

Page 1 of 2

SR - Sample recovery (In.)

K - Soil Symbols

N or CR/RQD where:

SYMBOLS:

- Undisturbed Sample
- Water level, time of drilling
- Water level
- C Caved depth of boring
- Loss of Water

N - Penetration in blows per foot (ASTM D-1586)

CR - % core recovery; NX or BX designates bit size (ASTM D-2113)

RQD - Rock Quality Designation

BORING NUMBER DE-1

DATE DRILLED 1-31-89

JOB NUMBER 88-692

Calvert Cliffs Nuclear Power Plant
ISFSF
Calvert County, Maryland

FIGURE 2.6-7B (1 of 2)

LAW ENGINEERING TEST BORING RECORD

ELEV.	STRATUM DEPTH	VISUAL SOIL DESCRIPTION	D	SR	K	N or CR/RQD	REMARKS
83'	35.0						
78	40.0	Firm light gray silty CLAY (CL), moist	40.0	18		8	
73	44.0	Very loose dark gray silty and clayey fine SAND (SC-SM), moist	45.0	18		4	c @ 44', 2-13-89
68	49.0	Firm tan silty fine SAND (SM), wet	50.0	18		13	
	50.5	Boring Terminated @ 50.5 Feet 2-1-89					

Page 2 of 2

D - Sample depth (Ft.)

SR - Sample recovery (In.)

K - Soil Symbols

N or CR/RQD where:

SYMBOLS:

- Undisturbed Sample
- Water level, time of drilling
- Water level
- Caved depth of boring
- Loss of Water

N - Penetration in blows per foot (ASTM D-1586)

CR - % core recovery; NX or BX designates bit size (ASTM D-2113)

RQD - Rock Quality Designation

BORING NUMBER DE-1

DATE DRILLED 1-31-89

JOB NUMBER B8-692

Calvert Cliffs Nuclear Power Plant
ISFSF
Calvert County, Maryland

FIGURE 2.6-7B (2 of 2)

LAW ENGINEERING TEST BORING RECORD

ELEV.	STRATUM DEPTH	VISUAL SOIL DESCRIPTION	D	SR	K	N or CR/RQD	REMARKS
111.9'	0.0'	TOPSOIL					
	0.2	Soft brown SILT (ML), little to some clay, moist	1.0	15		4	
	2.0	Loose brown silty fine to medium SAND (SM), damp	2.5	16		9	
106.9	4.0	Loose to firm light brown to tan fine to medium SAND (SP), moist to wet	5.0	18		9	
			7.5	18		13	
101.9			10.0	16		7	
96.9			15.0	12		19	
91.9		Some coarse sand below 20 feet	20.0	12		18	
86.9			25.0	14		13	
81.9	28.0	Firm to stiff light gray silty CLAY (CL), moist	30.0	18		10	
76.9			35.0	18		13	

D - Sample depth (Ft.)

SR - Sample recovery (In.)

K - Soil Symbols

N or CR/RQD where:

SYMBOLS:

- Undisturbed Sample
- Water level, time of drilling
- Water level
- C Caved depth of boring
- Loss of Water

N - Penetration in blows per foot (ASTM D-1586)

CR - % core recovery; NX or BX designates bit size (ASTM D-2113)

RQD - Rock Quality Designation

BORING NUMBER DE-2

DATE DRILLED 2-8-89

JOB NUMBER 88-692

Calvert Cliffs Nuclear Power Plant
ISFSF
Calvert County, Maryland

FIGURE 2.6-7C (1 of 3)

LAW ENGINEERING TEST BORING RECORD

ELEV.	STRATUM DEPTH	VISUAL SOIL DESCRIPTION	D	SR	K	N or CR/RQD	REMARKS
76.9'	35.0'						
	37.0	Loose dark gray clayey and silty fine SAND (SC-SM), moist					
71.9	41.0	Stiff light gray silty CLAY (CL), moist	40.0	18		5	
		Occasional sand seams					
65.9			45.0	18		9	
61.9	49.0	Loose to firm dark green clayey and silty fine SAND (SC-SM), moist	50.0	18		8	
56.9			55.0	18		9	
51.9			60.0	18		12	c @ 60', 2-13-89
45.9			65.0	18		22	
41.9			70.0	13		17	

Page 2 of 3

D - Sample depth (Ft.)

SR - Sample recovery (In.)
K - Soil Symbols
N or CR/RQD where:

N - Penetration in blows per foot (ASTM D-1586)
CR - % core recovery; NX or BX designates bit size (ASTM D-2113)
RQD - Rock Quality Designation

BORING NUMBER DE-2
DATE DRILLED 2-8-89
JOB NUMBER B8-592

Calvert Cliffs Nuclear Power Plant
ISFSF
Calvert County, Maryland

SYMBOLS:

- Undisturbed Sample
- Water level, time of drilling
- Water level
- C Caved depth of boring
- Loss of Water

FIGURE 2.6-7C (2 of 3)

LAW ENGINEERING TEST BORING RECORD

ELEV.	STRATUM DEPTH	VISUAL SOIL DESCRIPTION	D	SR	K	N or CR/RQD	REMARKS
41.9'	70.0'						
36.9			75.0	18		7	
31.9			80.0	18		12	
26.9			85.0	18		19	
21.9		Trace shells below 90 feet	90.0	18		65	
16.9	92.0	Dense green silty fine SAND (SM), with shells, moist to wet	95.0	18		36	
11.9	100.5	Boring Terminated @ 100.5 feet 2-9-89	100.0	14		27	

Page 3 of 3

D - Sample depth (Ft.)

SR - Sample recovery (In.)
K - Soil Symbols
N or CR/RQD where:

SYMBOLS:
 Undisturbed Sample
 Water level, time of drilling
 Water level
 C Caved depth of boring
 Loss of Water

N - Penetration in blows per foot (ASTM D-1586)
CR - % core recovery; NX or BX designates bit size (ASTM D-2113)
RQD - Rock Quality Designation

BORING NUMBER DE-2

DATE DRILLED 2-8-89

JOB NUMBER 88-692

Calvert Cliffs Nuclear Power Plant
 ISFSF
 Calvert County, Maryland

FIGURE 2.6-7C (3 of 3)

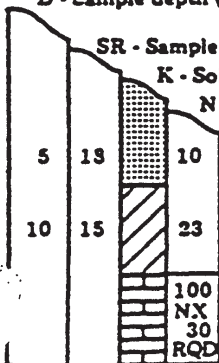
LAW ENGINEERING TEST BORING RECORD

ELEV.	STRATUM DEPTH	VISUAL SOIL DESCRIPTION	D	SR	K	N or CR/RQD	REMARKS
126.5'	0.0'	TOPSOIL					
	0.2	Firm to stiff brown fine sandy CLAY (CL), trace silt, damp	1.0	12		5	
			2.5	12		10	
121.5	3.5	Loose to firm brown silty fine to medium SAND (SM), trace clay, damp	5.0	18		6	
			7.5	18		6	
116.5	10.0	Firm light brown to tan silty fine to medium SAND (SP-SM), damp	10.0	16		9	10.5
			13.5	18		15	12.5
111.5			16.5	14		13	14.0
							16.0
106.5	17.0	Loose to dense light brown to tan fine to medium SAND (SP), moist to wet	20.5	10		6	
101.5		More coarse sand between 25 feet and 35 feet	26.0	8		34	26.5
			29.5	18		34	28.5
96.5			33.0	10		32	30.0
			35.0	8		40	32.0

@ 23', 2-13-89

Page 1 of 2

D - Sample depth (Ft.)



SR - Sample recovery (In.)

K - Soil Symbols

N or CR/RQD where:

N - Penetration in blows per foot (ASTM D-1586)

CR - % core recovery; NX or BX designates bit size (ASTM D-2113)

RQD - Rock Quality Designation

SYMBOLS:

☒ Undisturbed Sample

☒ Water level, time of drilling

☒ Water level

C Caved depth of boring

☒ Loss of Water

BORING NUMBER DE- 3

DATE DRILLED 2-1-89

JOB NUMBER B8-692

Calvert Cliffs Nuclear Power Plant
ISFSF
Calvert County, Maryland

FIGURE 2.6-7D (1 of 2)

LAW ENGINEERING TEST BORING RECORD

ELEV.	STRATUM DEPTH	VISUAL SOIL DESCRIPTION	D	SR	K	N or CR/RQD	REMARKS
91.5'	35.0'						
86.5	42.0	Firm light gray silty CLAY (CL), moist	40.0	8		34	
81.5			45.0	18		6	45.5 C @ 45', 2-13-89
							47.5
76.5			48.5	18		5	49.0
	51.0	Very loose brown to tan silty fine to medium SAND (SM), wet	52.0	18		3	51.0
	53.0	Stiff light gray to tan clayey SAND (SC), moist					
71.5	55.5	Boring Terminated @ 55.5 Feet 2-2-89	55.0	18		10	

Page 2 of 2

D - Sample depth (Ft.)

SR - Sample recovery (In.)

K - Soil Symbols

N or CR/RQD where:

SYMBOLS:

- Undisturbed Sample
- Water level, time of drilling
- Water level
- C Caved depth of boring
- Loss of Water

N - Penetration in blows per foot (ASTM D-1586)

CR - % core recovery; NX or BX designates bit size (ASTM D-2113)

RQD - Rock Quality Designation

BORING NUMBER DE-3

DATE DRILLED 2-1-89

JOB NUMBER 88-692

Calvert Cliffs Nuclear Power Plant
ISFSF
Calvert County, Maryland

FIGURE 2.6-7D (2 of 2)

LAW ENGINEERING TEST BORING RECORD

ELEV.	STRATUM DEPTH	VISUAL SOIL DESCRIPTION	D	SR	K	N or CR/RQD	REMARKS
116.7'	0.0'	TOPSOIL					
	0.2	Soft brown clayey SILT (ML), damp	1.0	14		4	
	1.5	Loose to very loose brown silty fine SAND (SM), damp	2.5	18		6	c @ 3', 2-13-89
111.7			5.0	18		4	
	7.0	Firm brown to tan silty fine to medium SAND (SP-SM), moist	7.5	18		16	
106.7			10.0	15		15	
			15.0	10		26	
101.7	17.0	Firm brown to tan fine to medium SAND (SP), moist to wet					
96.7		Some coarse sand below 20 feet	20.0	6		22	
			25.0	12		23	
86.7	29.0	Firm brown to tan silty fine to medium SAND (SP-SM), wet	30.0	18		19	
	32.0	Very soft light gray silty CLAY (CL), with occasional sand seams, moist to wet					
81.7			35.0	18		1	

Page 1 of 2

D - Sample depth (Ft.)

SR - Sample recovery (In.)

K - Soil Symbols

N or CR/RQD where: CR - % core recovery; NX or BX designates bit size (ASTM D-2113)

RQD - Rock Quality Designation

SYMBOLS:

- Undisturbed Sample
- Water level, time of drilling
- Water level
- C Caved depth of boring
- Loss of Water

BORING NUMBER DE-4

DATE DRILLED 1-31-89

JOB NUMBER 88-592

Calvert Cliffs Nuclear Power Plant
ISFSF
Calvert County, Maryland

FIGURE 2.6-7E (1 of 2)

LAW ENGINEERING TEST BORING RECORD

ELEV.	STRATUM DEPTH	VISUAL SOIL DESCRIPTION	D	SR	K	N or CR/RQD	REMARKS
81.7'	35.0'						
	38.0	Very loose light gray clayey fine SAND (SC), moist	40.0	18		3	
76.7							
	45.5	Boring Terminated @ 45.5 Feet 1-31-89	45.0	18		3	
71.7							

Page 2 of 2

D - Sample depth (Ft.)

SR - Sample recovery (In.)

K - Soil Symbols

N or CR/RQD where:

N - Penetration in blows per foot (ASTM D-1586)

CR - % core recovery; NX or BX designates bit size (ASTM D-2113)

RQD - Rock Quality Designation

BORING NUMBER DE-4

DATE DRILLED 1-31-89

JOB NUMBER 88-692

Calvert Cliffs Nuclear Power Plant
ISFSF
Calvert County, Maryland

FIGURE 2.6-7E (2 of 2)

LAW ENGINEERING TEST BORING RECORD

ELEV.	STRATUM DEPTH	VISUAL SOIL DESCRIPTION	D	SR	K	N or CR/RQD	REMARKS
121.5'	0.0'	TOPSOIL					
	0.2	Soft to very stiff brown sandy CLAY (CL), little silt, damp	1.0	10		4	
			2.5	18		10	
116.5			5.0	15		23	c @ 5.2', 2-13-89
	6.8	Firm brown-tan silty fine to medium SAND (SM), dry to damp	7.5	15		22	
111.5			10.0	12		19	
	12.0	Dense brown to tan silty fine to medium SAND (SP-SM), moist	15.0	10		40	
106.5			20.0	6		14	
101.5	20.0	Firm to dense brown to tan fine to medium SAND (SP), moist	25.0	7		15	
96.5		Some coarse sand below 25 feet	30.0	10		35	
91.5			35.0	8		12	
86.5							

Page 1 of 2

D - Sample depth (Ft.)

SR - Sample recovery (In.)
K - Soil Symbols
N or CR/RQD where:

SYMBOLS:
 Undisturbed Sample
 Water level, time of drilling
 Water level
 C Caved depth of boring
 Loss of Water

N - Penetration in blows per foot (ASTM D-1586)
CR - % core recovery; NX or BX designates bit size (ASTM D-2113);
RQD - Rock Quality Designation

BORING NUMBER DE- 5

DATE DRILLED 1-31-89

JOB NUMBER B8-692

Calvert Cliffs Nuclear Power Plant
 ISFSF
 Calvert County, Maryland

FIGURE 2.6-7F (1 of 2)

LAW ENGINEERING TEST BORING RECORD

ELEV.	STRATUM DEPTH	VISUAL SOIL DESCRIPTION	D	SR	K	N or CR/RQD	REMARKS
86.5'	35.0'						
81.5	39.5	Loose dark gray silty and clayey fine SAND (SC-SM), moist	40.0	14		8	
76.5	44.0	Loose light gray to tan clayey fine SAND (SC), moist	45.0	18		5	
	45.5	Boring Terminated @ 45.5 Feet 1-31-89					

Page 2 of 2

D - Sample depth (Ft.)

SR - Sample recovery (In.)
K - Soil Symbols
 N or CR/RQD where:

SYMBOLS:
 Undisturbed Sample
 Water level, time of drilling
 Water level
 C Caved depth of boring
 Loss of Water

N - Penetration in blows per foot (ASTM D-1586)
CR - % core recovery; NX or BX designates bit size (ASTM D-2113)
RQD - Rock Quality Designation

BORING NUMBER DE-5
DATE DRILLED 1-31-89
JOB NUMBER B8-592

Calvert Cliffs Nuclear Power Plant
 ISFSF
 Calvert County, Maryland

FIGURE 2.6-7F (2 of 2)

AUGER PROBE BORING RECORD

ELEV. (ft.)	STRATUM DEPTH (ft.)	VISUAL SOIL DESCRIPTION	REMARKS
0.0'	0.1	TOPSOIL Dark brown sandy CLAY	
	3.0	Dark brown silty CLAY with trace sand	
	8.0	Dark red brown silty SAND with trace clay	Cave @ 8.0', 2-1-89
	10.0	Auger Probe Terminated @ 10.0 Ft. 2-1-89	

NOTES: No Groundwater Encountered

Water level as noted

Water level at time of excavation

PROBE BORING NO. DE- 6

DATE EXCAVATED: 2-1-89

JOB NUMBER: B8-692

Calvert Cliffs Nuclear Power Plant
ISFSF
Calvert County, Maryland

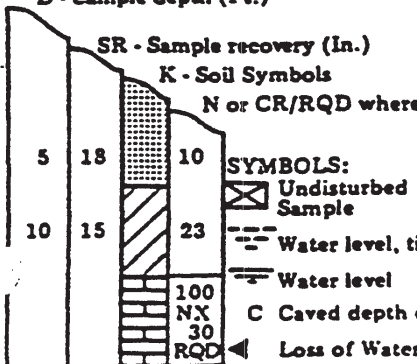
FIGURE 2.6-7G

LAW ENGINEERING TEST BORING RECORD

ELEV.	STRATUM DEPTH	VISUAL SOIL DESCRIPTION	D	SR	K	N or CR/RQD	REMARKS
113.9'	0.0'	TOPSOIL					
	0.2	Very soft brown sandy CLAY (CL), some silt, damp	1.0	15		2	
			2.5	14		3	
108.9	3.5	Firm to very stiff brown silty SAND (SM), dry	5.0	14		8	
			7.5	18		22	
103.9	8.5	Firm brown to tan fine to medium SAND (SP), moist	10.0	14		12	
			15.0	12		15	15.5
98.9		Wet below 20 feet Some coarse sand below 22 feet	18.5	12		29	17.5 19.0
93.9			22.0	6		33	21.0
88.9		Very loose light gray to tan silty fine SAND (SM), little clay, wet	27.0	8		32	24.0 \equiv @ 24.5', 26.0 2-6-89
83.9	28.0		31.0	18		3	28.0 30.0
78.9	32.0	Very loose tan silty fine SAND (SM), wet	35.0	18		6	32.0 34.0 c @ 34.3', 2-6-89

D - Sample depth (Ft.)

Page 1 of 2



N - Penetration in blows per foot (ASTM D-1586)
CR - % core recovery; NX or BX designates bit size (ASTM D-2113)
RQD - Rock Quality Designation

BORING NUMBER DE-7
DATE DRILLED 2-2-89
JOB NUMBER 88-692

SYMBOLS:
 Undisturbed Sample
 Water level, time of drilling
 Water level
 C Caved depth of boring
 Loss of Water

Calvert Cliffs Nuclear Power Plant
 ISFSF
 Calvert County, Maryland

FIGURE 2.6-7H (1 of 2)

LAW ENGINEERING TEST BORING RECORD

ELEV.	STRATUM DEPTH	VISUAL SOIL DESCRIPTION	D	SR	K	N or CR/RQD	REMARKS
78.9'	35.0'						
73.9			40.0	18		2	
68.9	43.0	Firm light gray to tan fine sandy CLAY (CL), moist	45.0	18		6	
	46.0	Loose dark gray clayey fine SAND (SC), moist					<div style="border: 1px solid black; width: 20px; height: 20px; margin: 0 auto; display: flex; align-items: center; justify-content: center;"> 46.0 48.0 </div>
63.9			49.0	18		9	
58.9	51.0	Firm to very stiff dark gray clayey and sandy SILT (ML), moist	54.0	18		5	
53.9	58.5	Boring Terminated @ 58.5 Feet 2-3-89	58.0	18		22	

Page 2 of 2

D - Sample depth (Ft.)

SR - Sample recovery (In.)

K - Soil Symbols

N or CR/RQD where:

SYMBOLS:

- Undisturbed Sample
- Water level, time of drilling
- Water level
- C Caved depth of boring
- Loss of Water

N - Penetration in blows per foot (ASTM D-1586)

CR - % core recovery; NX or BX designates bit size (ASTM D-2113)

RQD - Rock Quality Designation

BORING NUMBER DE-7

DATE DRILLED 2-2-89

JOB NUMBER B8-692

Calvert Cliffs Nuclear Power Plant
ISFSF
Calvert County, Maryland

FIGURE 2.6-7H (2 of 2)

AUGER PROBE BORING RECORD

ELEV. (ft.)	STRATUM DEPTH (ft.)	VISUAL SOIL DESCRIPTION	REMARKS
0.0'	0.2	<p style="text-align: center;">TOPSOIL</p> <p>Dark brown sandy CLAY</p>	
	3.5	Tan brown silty SAND	
	9.0	Fine to medium tan SAND and medium to coarse GRAVEL	
	10.0	Auger Probe Terminated @ 10.0 Ft 2-1-89	

Cave @ 7.0', 2-1-89

NOTES: No Groundwater Encountered

Page 1 of 1

- Water level as noted
- Water level at time of excavation

PROBE BORING NO. DE-8
 DATE EXCAVATED: 2-1-89
 JOB NUMBER: B8-692

Calvert Cliffs Nuclear Power Plant
 ISFSF
 Calvert County, Maryland

FIGURE 2.6-7I

LAW ENGINEERING TEST BORING RECORD

ELEV.	STRATUM DEPTH	VISUAL SOIL DESCRIPTION	D	SR	K	N or CR/RQD	REMARKS
118.2'	0.0'	TOPSOIL					
	0.2	Soft to stiff brown silty CLAY (CL), damp	1.0	15		4	
			2.5	14		9	
113.2			5.0	16		13	
	6.0	Firm brown silty fine SAND (SM), damp	7.5	18		17	
108.2	9.0	Loose to dense brown to tan silty fine to medium SAND (SP-SM), moist	10.0	18		8	
103.2	15.0	Firm to dense brown to tan fine to medium SAND (SP), moist to wet	15.0	0		24	
98.2			20.0	12		18	
93.2			25.0	10		39	
88.2		Wet below 28 feet	30.0	12		39	= @ 28', 2-13-89
83.2	32.0	Firm light gray silty CLAY (CL), damp	35.0	18		7	

Page 1 of 3

D - Sample depth (Ft.)

SR - Sample recovery (In.)

K - Soil Symbols

N or CR/RQD where:

SYMBOLS:

- Undisturbed Sample
- Water level, time of drilling
- Water level
- C Caved depth of boring
- Loss of Water

N - Penetration in blows per foot (ASTM D-1586)

CR - % core recovery; NX or BX designates bit size (ASTM D-2113)

RQD - Rock Quality Designation

BORING NUMBER DE-9

DATE DRILLED 2-6-89

JOB NUMBER B8-692

Calvert Cliffs Nuclear Power Plant
ISFSF
Calvert County, Maryland

FIGURE 2.6-7J (1 of 3)

LAW ENGINEERING TEST BORING RECORD

ELEV.	STRATUM DEPTH	VISUAL SOIL DESCRIPTION	D	SR	K	N or CR/RQD	REMARKS
83.2'	35.0'						
	36.0	Firm tan silty fine SAND (SM), wet					36.0 38.0
78.2			39.0	18		11	
	44.0	Very loose light gray to tan clayey fine SAND (SC), moist	45.0	18		2	
73.2	46.0	Loose dark gray clayey fine SAND (SC), moist					
68.2			50.0	18		6	
	54.0	Firm tan silty fine SAND (SM), wet	55.0	15		21	c @ 54', 2-13-89
63.2	58.0	Stiff dark gray clayey and silty fine SAND (SC-SM), moist	60.0	18		10	61.0 63.0
58.2			64.0	18		14	
54.2			70.0	18		16	
48.2							

Page 2 of 3

D - Sample depth (Ft.)

SR - Sample recovery (In.)

K - Soil Symbols

N or CR/RQD where:

SYMBOLS:

- Undisturbed Sample
- Water level, time of drilling
- Water level
- C Caved depth of boring
- Loss of Water

N - Penetration in blows per foot (ASTM D-1586)

CR - % core recovery; NX or BX designates bit size (ASTM D-2113)

RQD - Rock Quality Designation

BORING NUMBER DE- 9

DATE DRILLED 2-5-89

JOB NUMBER B8-692

Calvert Cliffs Nuclear Power Plant
ISFSF
Calvert County, Maryland

FIGURE 2.6-7J (2 of 3)

LAW ENGINEERING TEST BORING RECORD

ELEV.	STRATUM DEPTH	VISUAL SOIL DESCRIPTION	D	SR	K	N or CR/RQD	REMARKS
48.2'	70.0'						
43.2			75.0	18		15	
38.2			80.0	18		10	
							<div style="border: 1px solid black; width: 20px; height: 20px; margin: 0 auto; display: flex; align-items: center; justify-content: center;"> 81.0 83.0 </div>
33.2			84.0	18		12	
28.2			90.0	18		20	
23.2		Trace shells below 94 feet	94.5	10		50 4"	
	97.0	Firm green silty fine SAND (SM), with shells, wet					
18.2	100.5	Boring Terminated @ 100.5 Feet 2-8-89	100.0	16		30	

Page 3 of 3

D - Sample depth (Ft.)

SR - Sample recovery (In.)

K - Soil Symbols

N or CR/RQD where:

SYMBOLS:

- Undisturbed Sample
- Water level, time of drilling
- Water level
- C Caved depth of boring
- Loss of Water

N - Penetration in blows per foot (ASTM D-1586)

CR - % core recovery; NX or BX designates bit size (ASTM D-2113);

RQD - Rock Quality Designation

BORING NUMBER DE- 9

DATE DRILLED 2-6-89

JOB NUMBER B8-592

Calvert Cliffs Nuclear Power Plant
ISFSF
Calvert County, Maryland

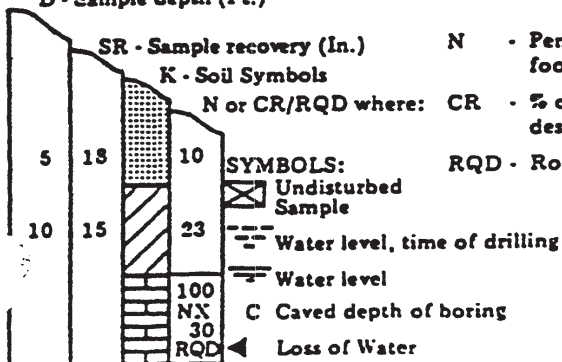
FIGURE 2.6-7J (3 of 3)

LAW ENGINEERING TEST BORING RECORD

ELEV.	STRATUM DEPTH	VISUAL SOIL DESCRIPTION	D	SR	K	N or CR/RQD	REMARKS
119.2'	0.0'						
	0.2	TOPSOIL					
		Loose to firm brown silty fine SAND (SM), trace clay, dry to damp	1.0	15		6	
			2.5	12		19	
114.2			5.0	16		24	
			7.5	16		11	
	8.0	Firm brown to tan silty fine to medium SAND (SP-SM), moist					
109.2			10.0	14		13	
104.2	15.0	Dense brown to tan fine to medium SAND (SP), damp to moist	15.0	18		28	
		Wet below 16 feet, some coarse sand below 16 feet					
99.2			20.0	8		22	
94.2			25.0	10		22	≡ @ 24', 2-13-89
89.2			30.0	10		48	
	32.0	Very loose light gray to tan clayey fine SAND (SC), wet					
84.2			35.0	12		3	

D - Sample depth (Ft.)

Page 1 of 2



N - Penetration in blows per foot (ASTM D-1586)

CR - % core recovery; NX or BX designates bit size (ASTM D-2113)

RQD - Rock Quality Designation

BORING NUMBER DE- 10

DATE DRILLED 2-6-89

JOB NUMBER B8-692

Calvert Cliffs Nuclear Power Plant
ISFSF
Calvert County, Maryland

FIGURE 2.6-7K (1 of 2)

LAW ENGINEERING TEST BORING RECORD

ELEV.	STRATUM DEPTH	VISUAL SOIL DESCRIPTION	D	SR	K	N or CR/RQD	REMARKS
123.5'	0.0'						
	1.5	FILL - sampled as stiff brown fine sandy clay, trace organics, damp	1.0	15		10	
		FILL - sampled as brown to gray fine sand, damp	2.5	12		18	
118.5			5.0	18		8	
				24			5.0
							8.0
113.6			9.0	14		8	
			12.0	14		5	@ 11.5', 2-13-89
108.5	14.0	FILL - sampled as very loose gray silty fine sand, moist	15.0	14		1	
				18			16.0
	17.0	Firm brown fine to medium clayey and silty SAND (SC-SM), damp	19.0	16		12	18.0
103.5	20.0	Firm tan silty fine to medium SAND (SM), damp	22.0	12		21	
98.6			25.0	10		21	
							C @ 27', 2-13-89
93.6	30.5	Boring Terminated @ 30.5 Feet 2-10-89	30.0	10		28	
88.6							

Page 1 of 1

D - Sample depth (Ft.)

SR - Sample recovery (In.)

K - Soil Symbols

N or CR/RQD where:

SYMBOLS:

- Undisturbed Sample
- Water level, time of drilling
- Water level
- C Caved depth of boring
- Loss of Water

N - Penetration in blows per foot (ASTM D-1586)

CR - % core recovery; NX or BX designates bit size (ASTM D-2113)

RQD - Rock Quality Designation

BORING NUMBER DE-11

DATE DRILLED 2-10-89

JOB NUMBER 88-692

Calvert Cliffs Nuclear Power Plant
ISFSF
Calvert County, Maryland

FIGURE 2.6-7L

LAW ENGINEERING TEST BORING RECORD

ELEV.	STRATUM DEPTH	VISUAL SOIL DESCRIPTION	D	SR	K	N or CR/RQD	REMARKS
130.9'	0.0'	FILL - sampled as loose brown silty sand, trace shells below 5 feet, some clay encountered at 8 feet, damp	1.0	14		5	
			2.5	14		9	
125.9			5.0	14		9	
			7.5	18		10	
120.9	9.0	FILL - sampled as stiff gray silt, trace shells, little organics, damp	10.0	15		7	
	12.0	Firm gray silty fine SAND (SM), trace shells, little organics, damp	14.0	18		13	
115.9	15.0	Firm brown clayey and silty SAND (SC-SM), damp	18.0	18		21	
110.9							
105.9	26.0	Firm to dense tan medium to coarse SAND (SP), damp	27.0	18		39	
100.9	30.5	Boring Terminated @ 30.5 Feet 2-10-89	30.0	12		29	
95.9							

D - Sample depth (Ft.)

SYMBOLS:

- Undisturbed Sample
- Water level, time of drilling
- Water level
- Caved depth of boring
- Loss of Water

Legend:

- N** - Penetration in blows per foot (ASTM D-1586)
- CR** - % core recovery; NX or BX designates bit size (ASTM D-2113)
- RQD** - Rock Quality Designation

BORING NUMBER DE- 12

DATE DRILLED 2-10-89

JOB NUMBER 88-692

Calvert Cliffs Nuclear Power Plant
ISFSF
Calvert County, Maryland

FIGURE 2.6-7M