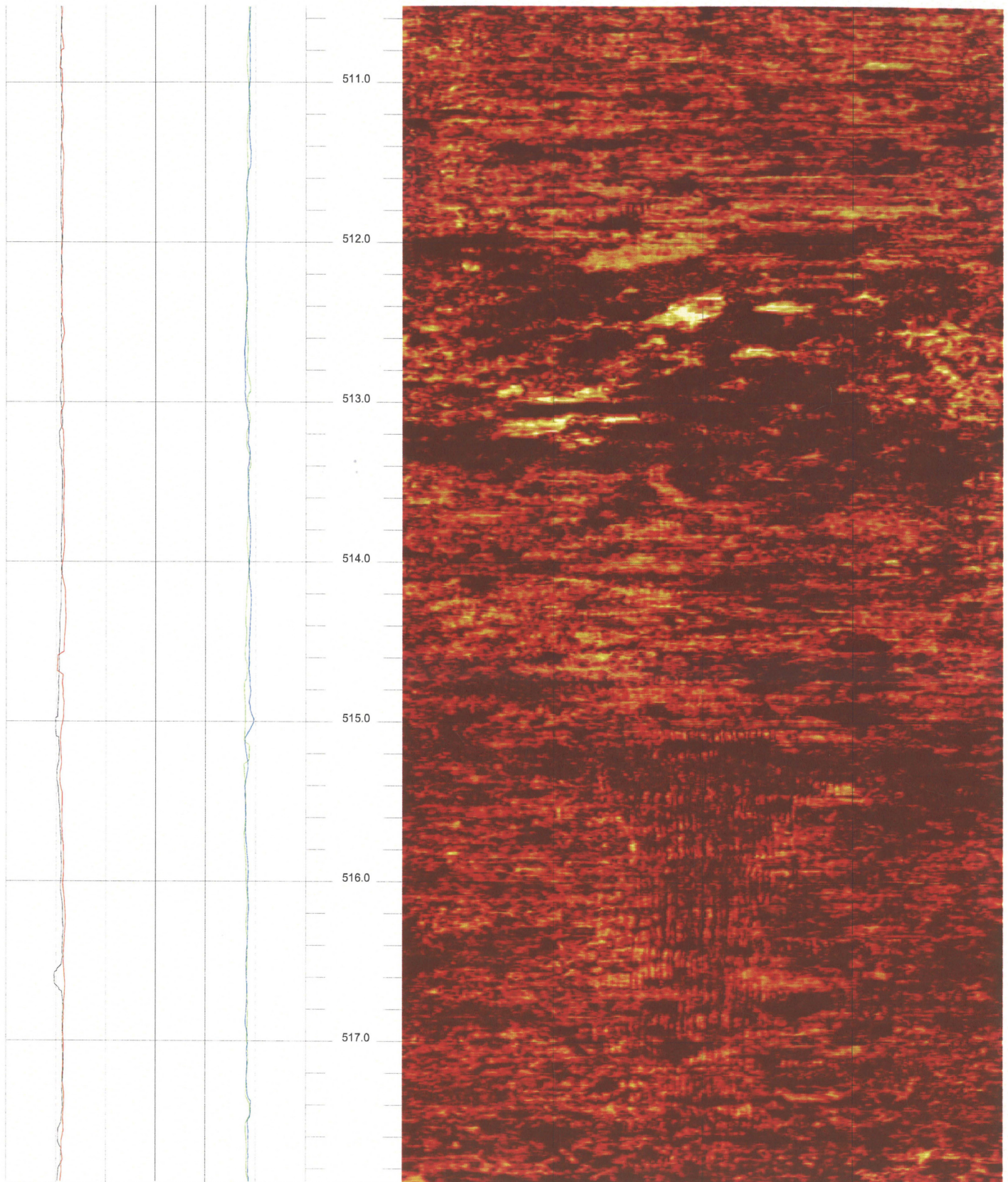


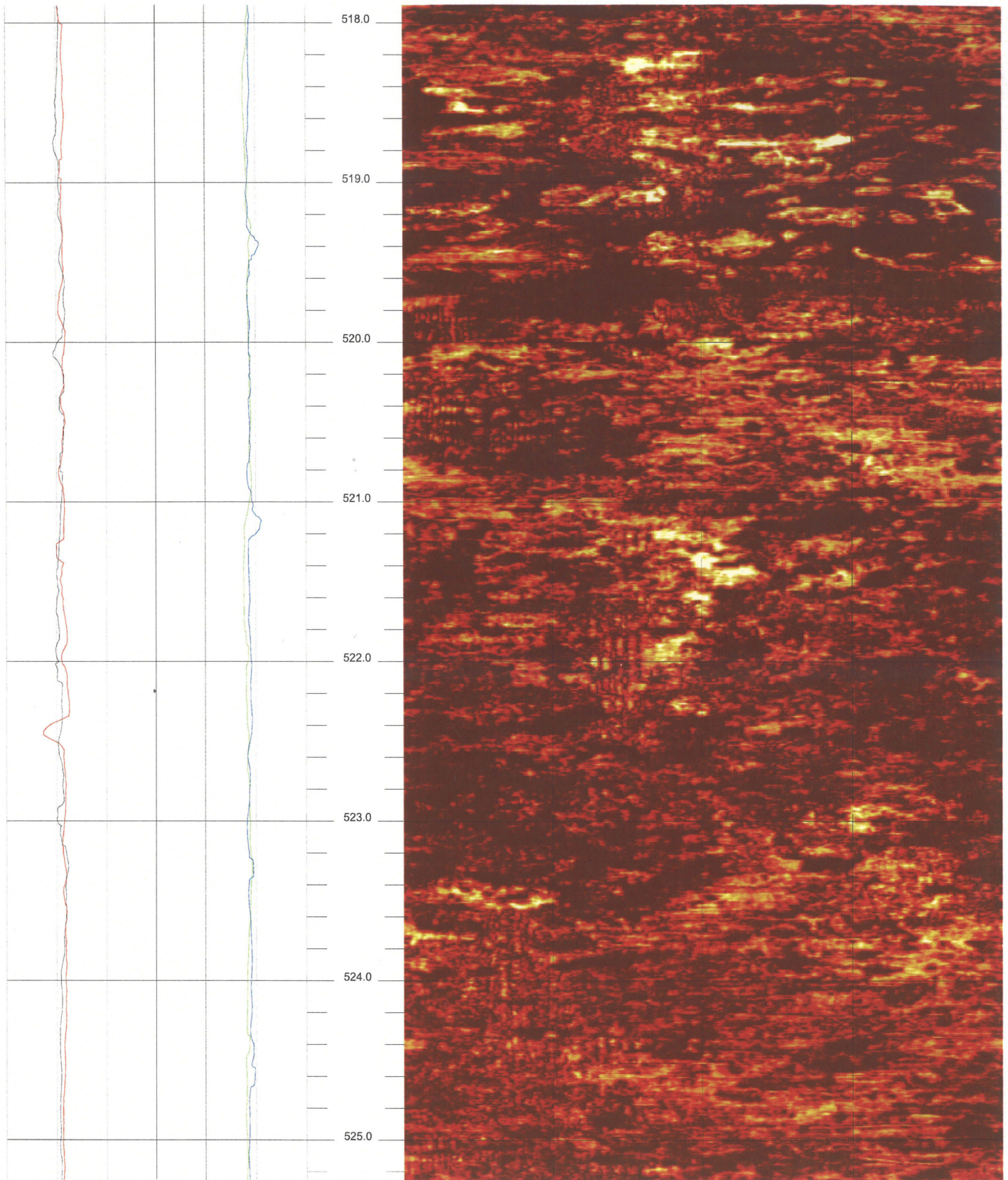
B-701 (DH) LOWER SECTION

510.520 to 503.152ft



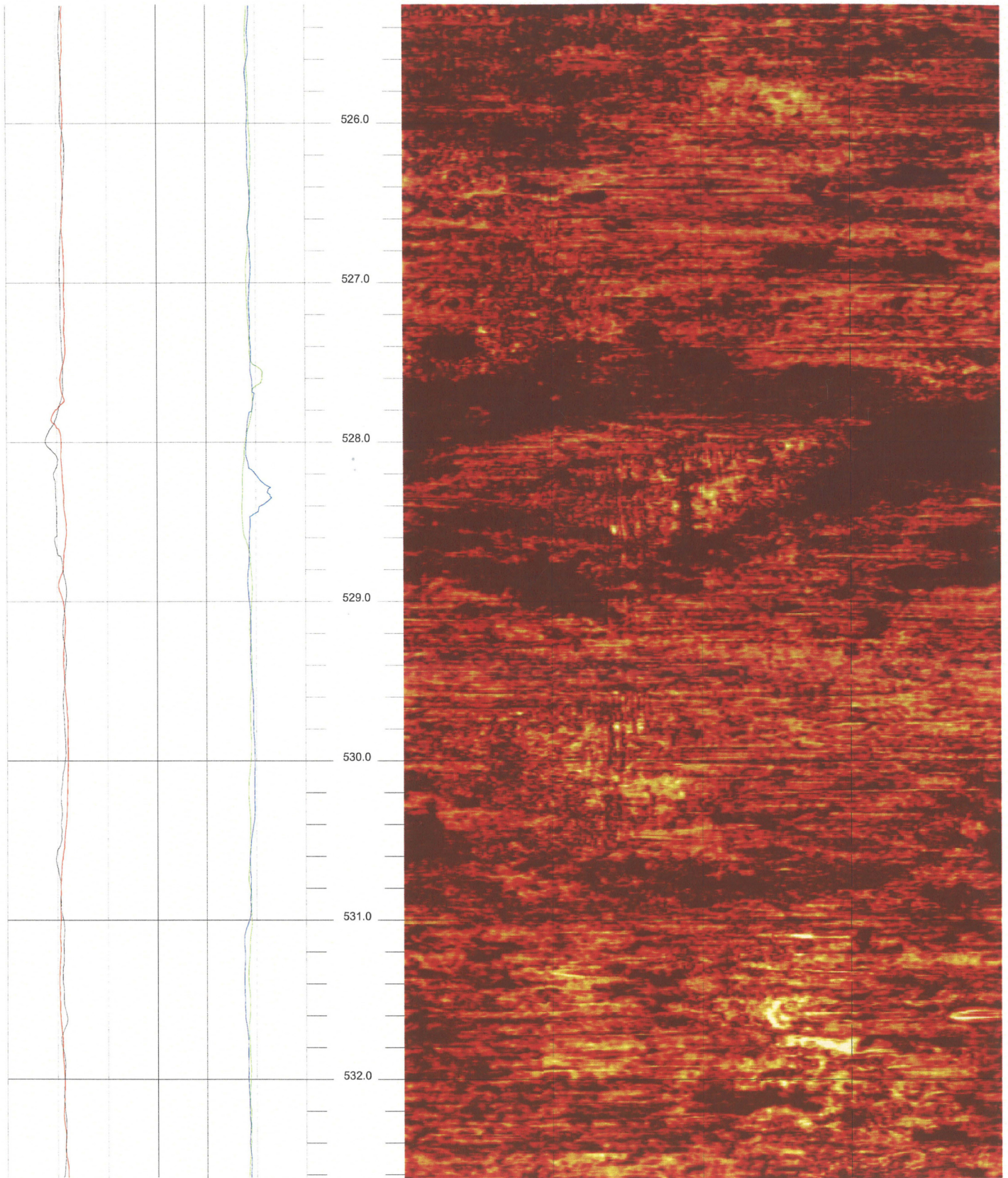
B-701 (DH) LOWER SECTION

517.888 to 510.520ft



B-701 (DH) LOWER SECTION

525.256 to 517.888ft



B-701 (DH) LOWER SECTION

532.624 to 525.256ft

18

FPL Turkey Point COL Boring B-701 (DH) lower section Acoustic Televiewer based Caliper rev 1 Sheet 18 of 29