

NGAM API Cs.		SPR Ohm		SP Millivolt	
0.00	150.00	0.00	15.00	-200.00	300.00
CGAM API Cs.		LON Ohm M.		CALP Inch	
0.00	150.00	0.00	15.00	2.00	12.00
		SHN Ohm M.			
		0.00	15.00		

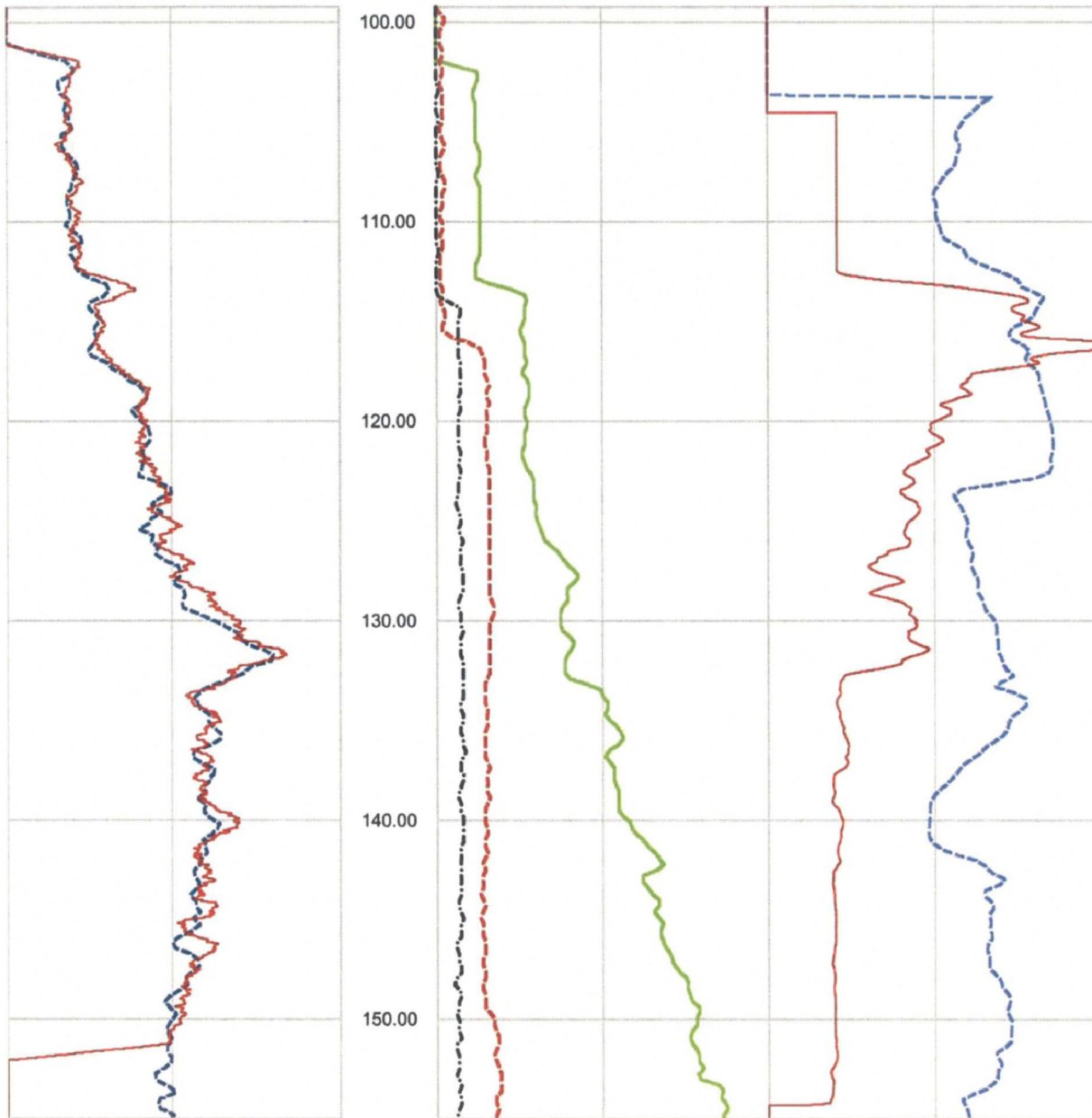


Figure 37. Boring B-704 G (DH) lower section, Caliper, Natural gamma, Resistivity and SP logs

Deviated borehole in orthographic projection, viewed from N161

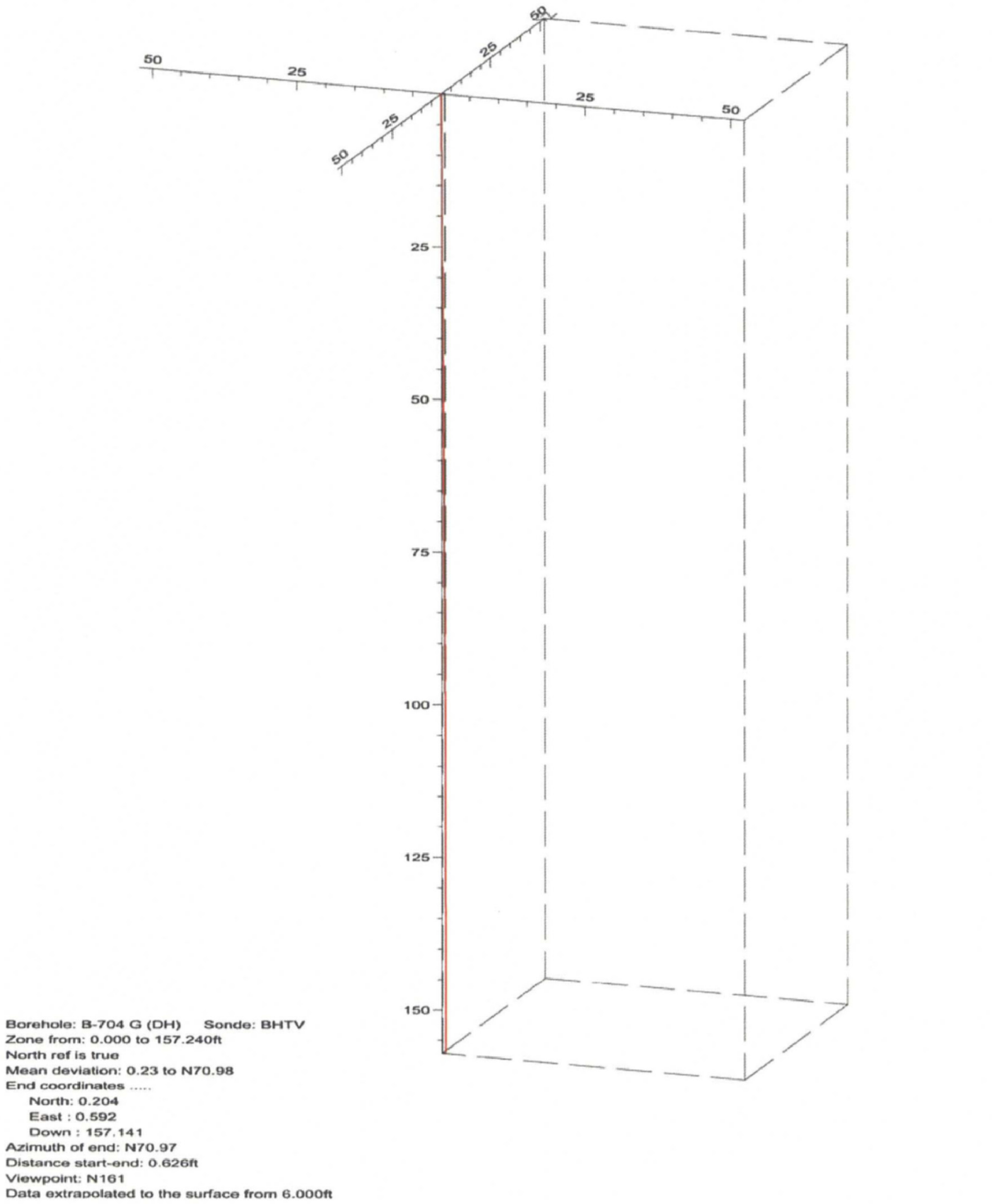


Figure 38. Boring B-704 G (DH), Deviation Projection (dimensions in feet)

### FPL Turkey Point COL Boring B-708 (DH) Receiver to Receiver $V_s$ and $V_p$ Analysis

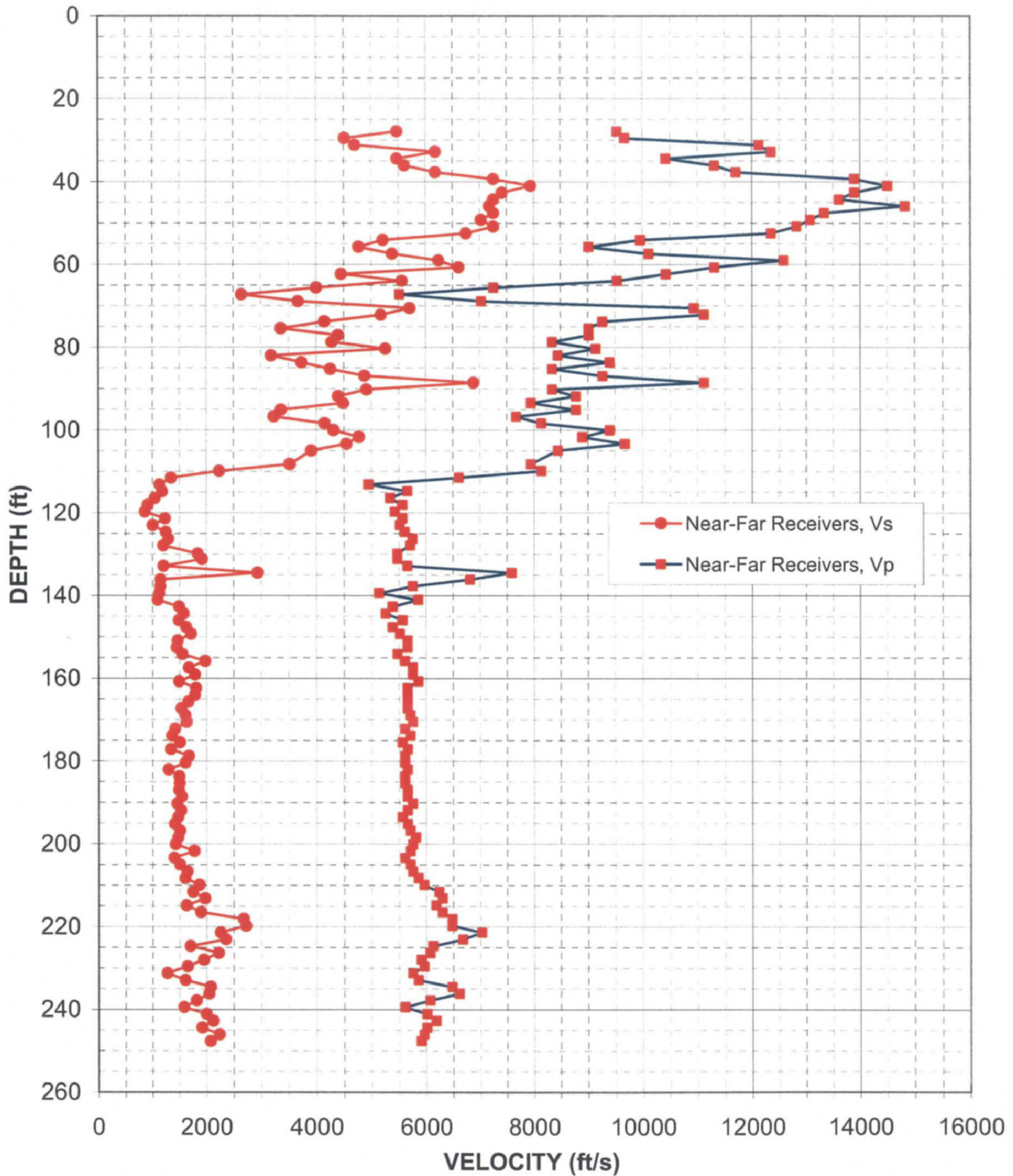


Figure 39: Boring B-708 (DH), Suspension R1-R2 P- and  $S_H$ -wave velocities

Depth (feet)	V <sub>s</sub> (feet/sec)	V <sub>p</sub> (feet/sec)	Depth (feet)	V <sub>s</sub> (feet/sec)	V <sub>p</sub> (feet/sec)	Depth (feet)	V <sub>s</sub> (feet/sec)	V <sub>p</sub> (feet/sec)
27.9	5460	9520	111.6	1330	6600	193.6	1460	5560
29.5	4500	9660	113.2	1120	4940	195.2	1400	5650
31.2	4690	12120	114.8	1170	5650	196.9	1490	5700
32.8	6170	12350	116.5	1030	5330	198.5	1460	5800
34.5	5460	10420	118.1	900	5560	200.1	1410	5750
36.1	5600	11300	119.8	850	5420	201.8	1760	5700
37.7	6170	11700	121.4	1220	5560	203.4	1390	5600
39.4	7250	13890	123.0	1000	5510	205.1	1490	5700
41.0	7940	14490	124.7	1230	5600	206.7	1630	5750
42.7	7410	13890	126.3	1280	5750	208.3	1590	5850
44.3	7250	13610	128.0	1190	5700	210.0	1850	5950
45.9	7170	14810	129.9	1830	5460	211.6	1740	6230
47.6	7250	13330	131.2	1900	5460	213.3	1960	6290
49.2	7020	13070	132.9	1190	5650	214.9	1610	6170
50.9	7250	12820	134.5	2920	7580	216.5	1880	6290
52.5	6730	12350	136.2	1140	6800	218.2	2670	6470
54.1	5210	9950	137.8	1130	5750	219.8	2710	6470
55.8	4760	9010	139.4	1110	5130	221.5	2240	7020
57.4	5380	10100	141.1	1080	5850	223.1	2340	6670
59.1	6230	12580	142.7	1480	5380	224.7	1690	6120
60.7	6600	11300	144.4	1560	5250	226.4	2210	6060
62.3	4440	10420	146.0	1470	5560	228.0	1930	5900
64.0	5560	9520	147.6	1610	5380	229.7	1630	5950
65.6	3990	7250	149.3	1700	5510	231.3	1260	5750
67.3	2640	5510	150.9	1460	5650	232.9	1590	5850
68.9	3660	7020	152.6	1440	5650	234.6	2060	6470
70.5	5700	10930	154.2	1540	5460	236.2	2030	6600
72.2	5170	11110	155.8	1960	5600	237.9	1800	6060
73.8	4140	9260	157.5	1660	5750	239.5	1570	5600
75.5	3350	9010	159.1	1770	5750	241.1	1980	6010
77.1	4390	9010	160.8	1480	5850	242.8	2110	6170
78.7	4270	8330	162.4	1790	5650	244.4	1900	6010
80.4	5250	9130	164.0	1770	5650	246.1	2220	5950
82.0	3170	8440	165.7	1650	5650	247.7	2060	5900
83.7	3720	9390	167.3	1520	5650			
85.3	4250	8330	169.0	1590	5700			
86.9	4870	9260	170.6	1620	5750			
88.6	6870	11110	172.2	1410	5600			
90.2	4900	8330	173.9	1350	5700			
91.9	4390	8770	175.5	1490	5560			
93.5	4470	7940	177.2	1330	5650			
95.1	3350	8770	178.8	1660	5600			
96.8	3220	7660	180.5	1590	5600			
98.4	4140	8130	182.1	1290	5650			
100.1	4300	9390	183.7	1480	5600			
101.7	4760	8890	185.4	1490	5600			
103.4	4540	9660	187.0	1470	5650			
105.0	3900	8440	188.7	1530	5650			
108.3	3510	7940	190.3	1440	5750			
109.9	2220	8130	191.9	1520	5650			

Table 13. Boring B-708 (DH), Suspension R1-R2 depths and P- and S<sub>H</sub>-wave velocities

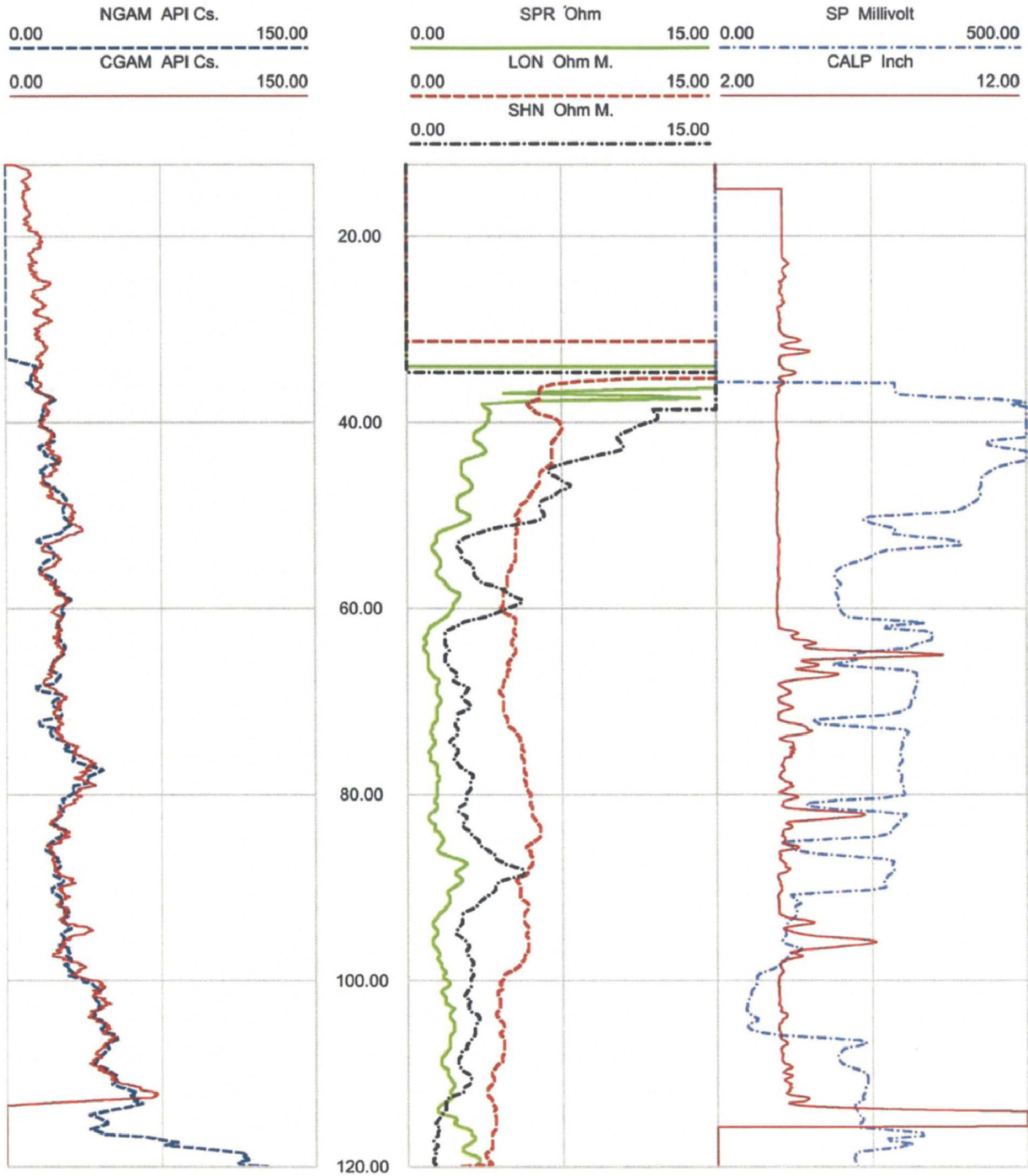


Figure 40. Boring B-708 (DH) upper section, Caliper, Natural gamma, Resistivity and SP logs

0.00	NGAM API Cs.	150.00
0.00	CGAM API Cs.	150.00

1.00	SPR Ohm	100.00	-500.00	SP Millivolt	0.00
1.00	LON Ohm M.	100.00	2.00	CALP Inch	12.00
1.00	SHN Ohm M.	100.00			

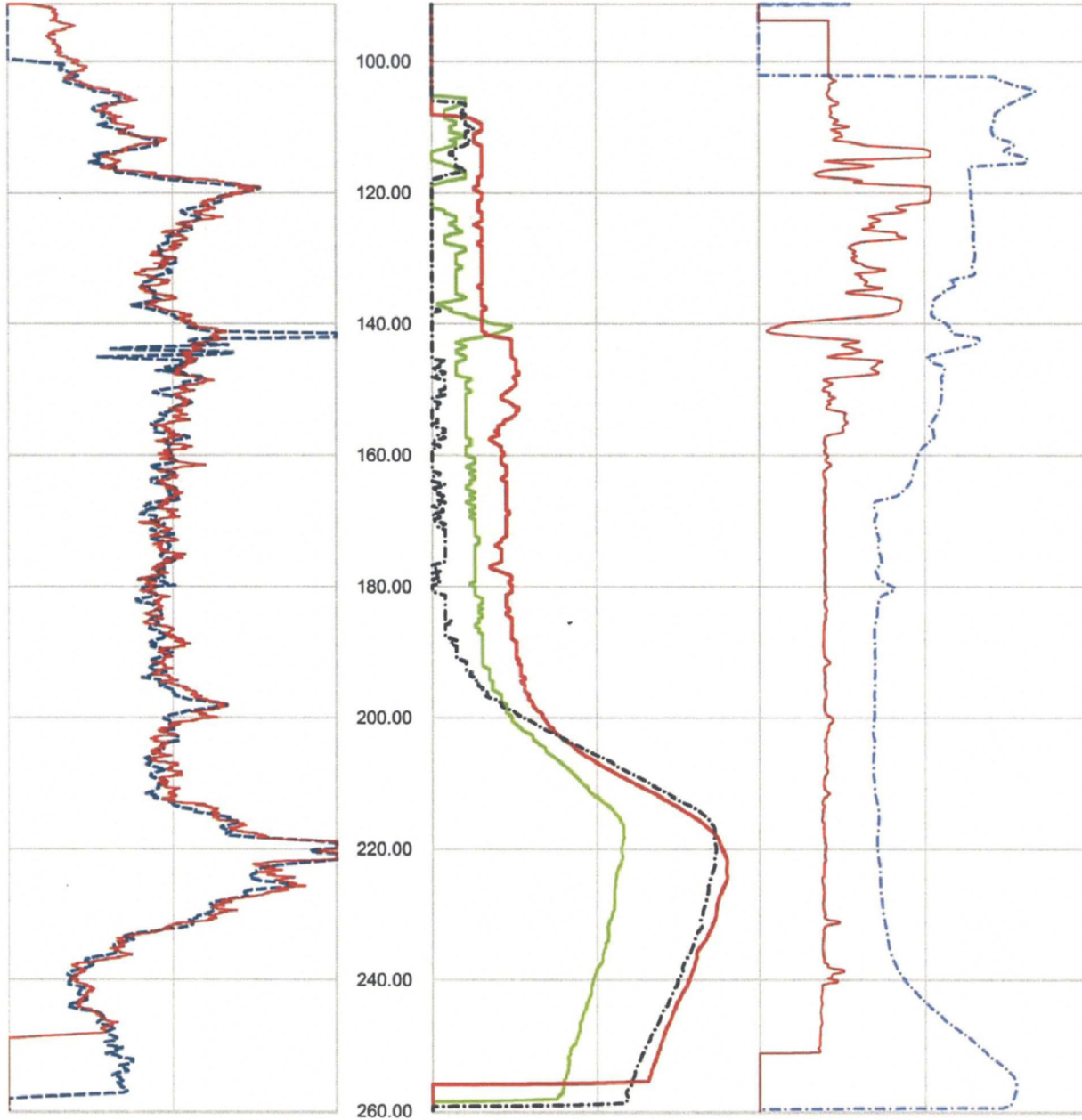


Figure 41. Boring B-708 (DH) lower section, Caliper, Natural gamma, Resistivity and SP logs

Deviated borehole in orthographic projection, viewed from N128

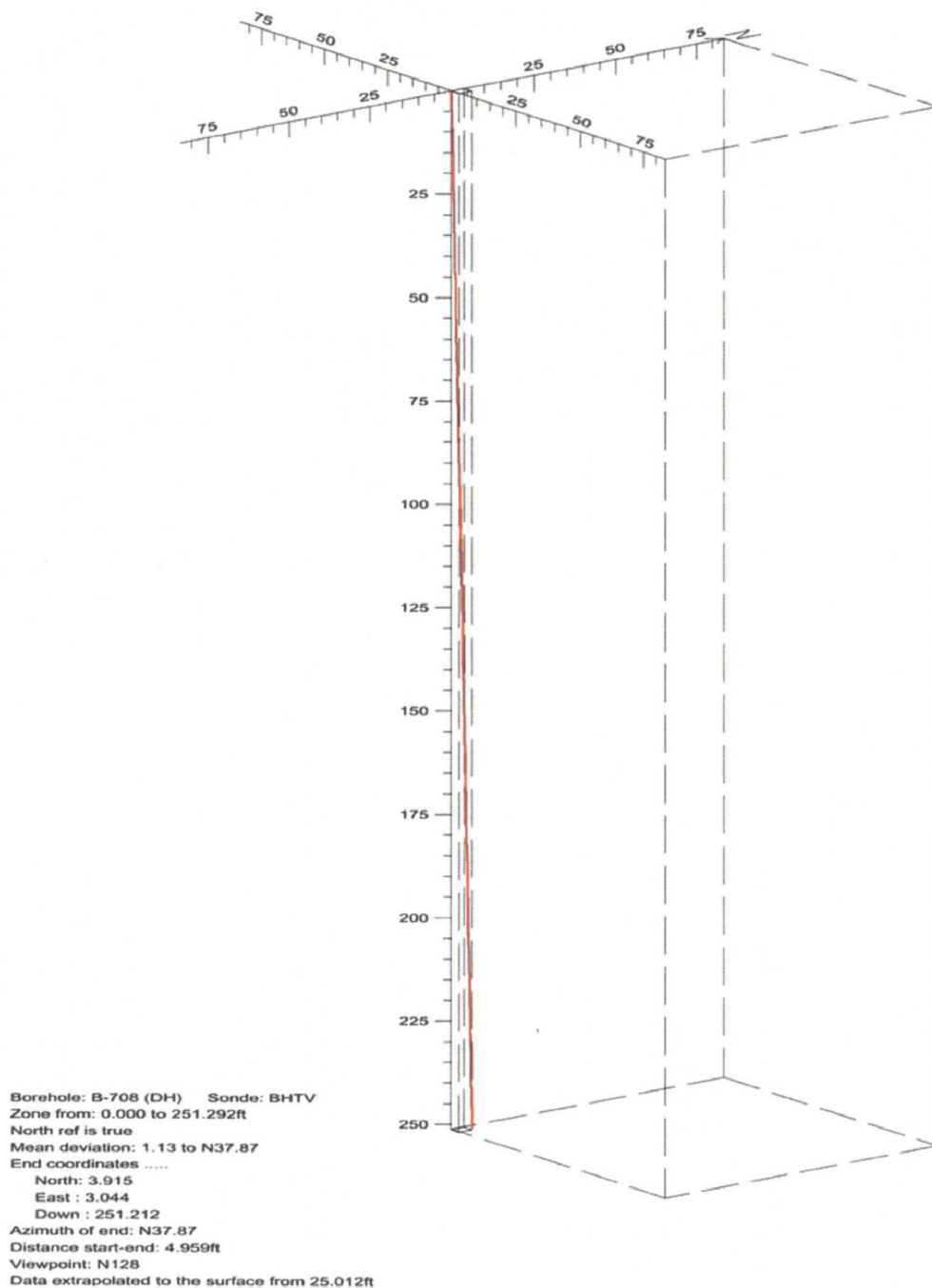


Figure 42. Boring B-708 (DH), Deviation Projection (dimensions in feet)

### FPL Turkey Point COL Boring B-710 G (DH) Receiver to Receiver $V_s$ and $V_p$ Analysis

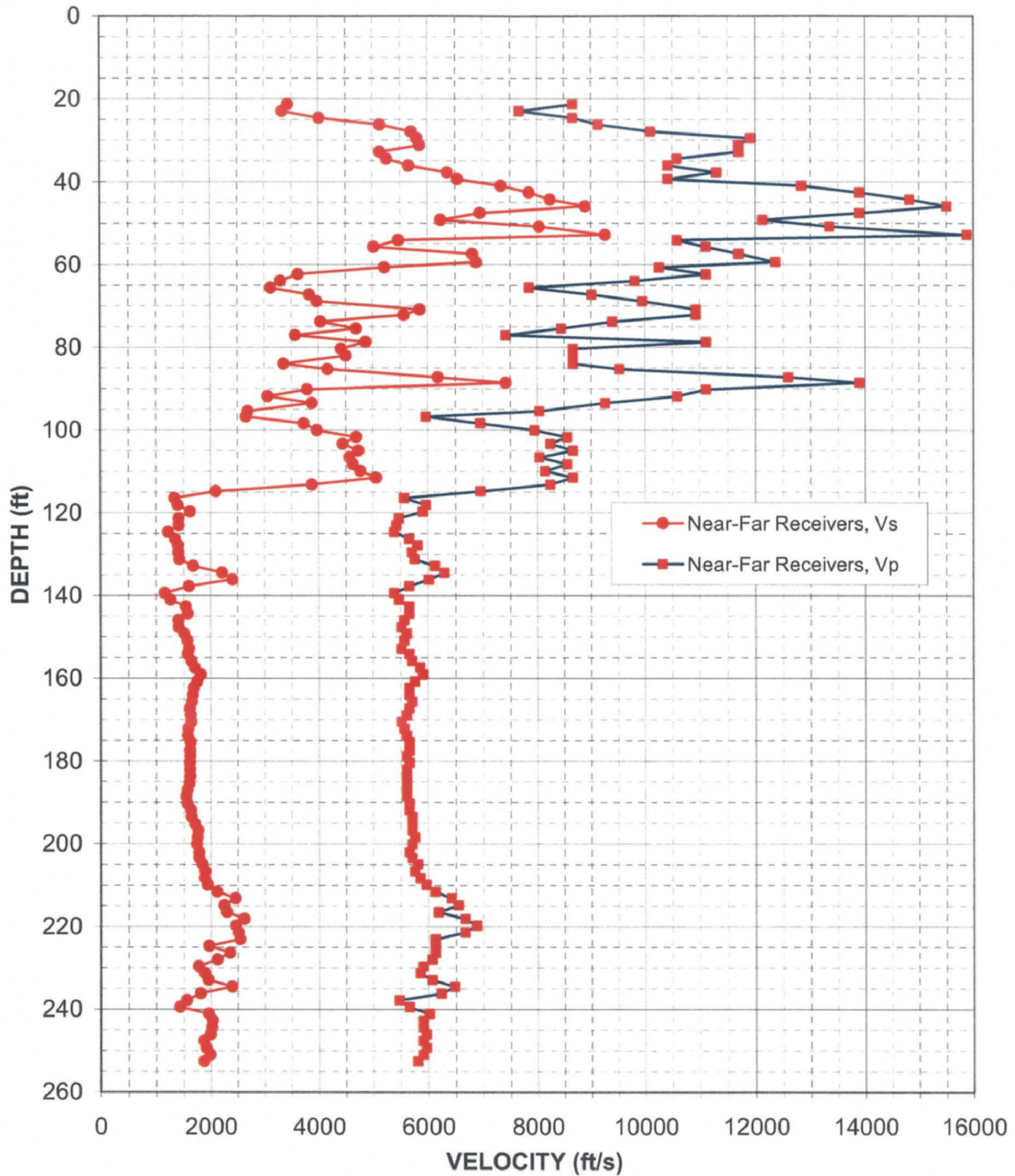


Figure 43: Boring B-710 G (DH), Suspension R1-R2 P- and  $S_H$ -wave velocities



Depth (feet)	V <sub>s</sub> (feet/sec)	V <sub>p</sub> (feet/sec)	Depth (feet)	V <sub>s</sub> (feet/sec)	V <sub>p</sub> (feet/sec)	Depth (feet)	V <sub>s</sub> (feet/sec)	V <sub>p</sub> (feet/sec)
21.3	3440	8660	103.4	4440	8230	185.4	1600	5600
23.0	3330	7660	105.0	4730	8660	187.0	1560	5600
24.6	4020	8660	106.6	4570	8030	188.7	1540	5600
26.3	5130	9130	108.3	4630	8550	190.3	1560	5650
27.9	5700	10100	109.9	4760	8130	191.9	1630	5650
29.5	5800	11900	111.6	5050	8660	193.6	1640	5700
31.2	5850	11700	113.2	3880	8230	195.2	1700	5700
32.8	5130	11700	114.8	2100	6940	196.9	1760	5700
34.5	5250	10580	116.5	1330	5560	198.5	1750	5750
36.1	5650	10420	118.1	1390	5950	200.1	1740	5700
37.7	6350	11300	119.8	1620	5900	202.1	1780	5650
39.4	6540	10420	121.4	1410	5460	203.4	1780	5700
41.0	7330	12820	123.0	1410	5420	205.1	1840	5800
42.7	7840	13890	124.7	1210	5380	206.7	1890	5750
44.3	8230	14810	126.3	1340	5650	208.3	1880	5850
45.9	8890	15500	128.0	1390	5800	210.0	1930	5950
47.6	6940	13890	129.6	1400	5700	211.6	2110	6120
49.2	6230	12120	131.2	1420	5750	213.3	2450	6410
50.9	8030	13330	132.9	1680	6120	214.9	2240	6540
52.8	9260	15870	134.5	2210	6290	216.5	2290	6170
54.1	5460	10580	136.2	2400	6010	218.2	2610	6670
55.8	5010	11110	137.8	1590	5650	219.8	2460	6870
57.4	6800	11700	139.4	1150	5380	221.5	2510	6670
59.4	6870	12350	141.1	1260	5460	223.1	2530	6120
60.7	5210	10260	142.7	1540	5650	224.7	1960	6120
62.3	3620	11110	144.4	1570	5650	226.4	2350	6120
64.0	3300	9800	146.0	1400	5560	228.0	2120	6060
65.6	3120	7840	147.6	1410	5510	229.7	1770	5900
67.3	3830	9010	149.3	1510	5600	231.3	1880	5850
68.9	3970	9950	150.9	1560	5560	232.9	1950	6060
70.9	5850	10930	152.9	1590	5510	234.6	2390	6470
72.2	5560	10930	154.2	1570	5650	236.2	1810	6230
73.8	4040	9390	155.8	1640	5700	237.9	1550	5460
75.5	4690	8440	157.5	1700	5850	239.5	1420	5650
77.1	3570	7410	159.1	1810	5900	241.1	1960	6010
78.7	4870	11110	160.8	1750	5750	242.8	2030	5900
80.4	4420	8660	162.4	1680	5650	244.4	2010	5900
82.0	4500	8660	164.0	1670	5650	246.1	1990	5950
84.0	3350	8660	165.7	1650	5700	247.7	1870	5900
85.3	4170	9520	167.3	1610	5650	249.3	1910	5950
87.3	6170	12580	169.0	1630	5600	251.0	1980	5900
88.6	7410	13890	170.6	1640	5510	252.6	1870	5800
90.2	3790	11110	172.2	1580	5560			
91.9	3060	10580	173.9	1570	5600			
93.5	3880	9260	175.5	1620	5650			
95.5	2690	8030	177.5	1610	5650			
96.8	2660	5950	178.8	1620	5600			
98.4	3720	6940	180.5	1610	5650			
100.1	3970	7940	182.1	1610	5600			
101.7	4690	8550	183.7	1620	5600			

Table 14. Boring B-710 G (DH), Suspension R1-R2 depths and P- and S<sub>H</sub>-wave velocities

0.00	NGAM API Cs.	150.00
0.00	CGAM API Cs.	150.00

0.00	SPR Ohm	15.00	-250.00	SP Millivolt	250.00
0.00	LON Ohm M.	15.00	2.00	CALP Inch	12.00
0.00	SHN Ohm M.	15.00			

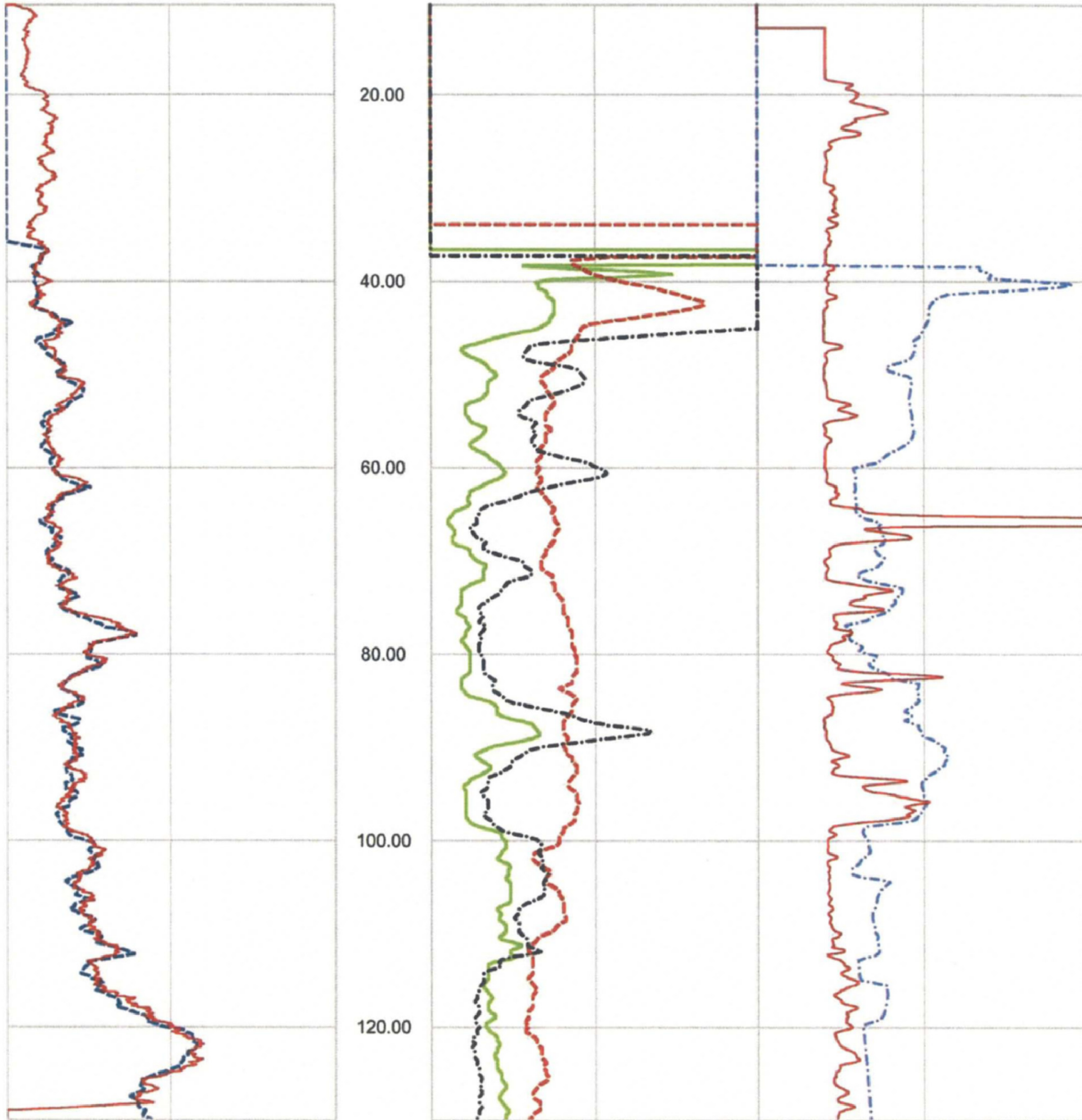


Figure 44. Boring B-710 G (DH) upper section, Caliper, Natural gamma, Resistivity and SP logs

NGAM API Cs.	
0.00	200.00
CGAM API Cs.	
0.00	200.00

SPR Ohm		SP Millivolt	
1.00	100.00	0.00	500.00
LON Ohm M.		CALP Inch	
1.00	100.00	2.00	12.00
SHN Ohm M.			
1.00	100.00		

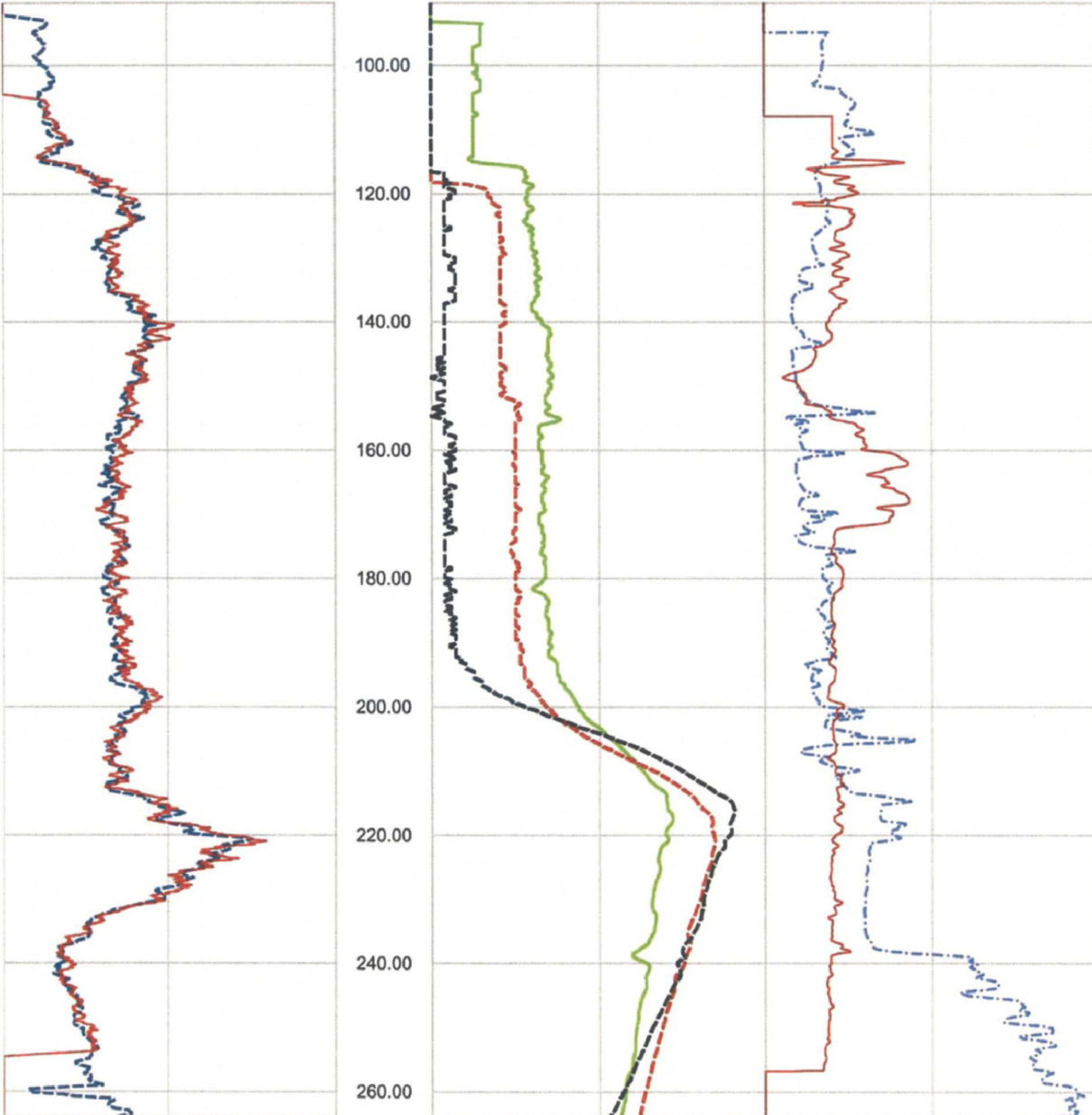


Figure 45. Boring B-710 G (DH) lower section, Caliper, Natural gamma, Resistivity and SP logs

Deviated borehole in orthographic projection, viewed from N195

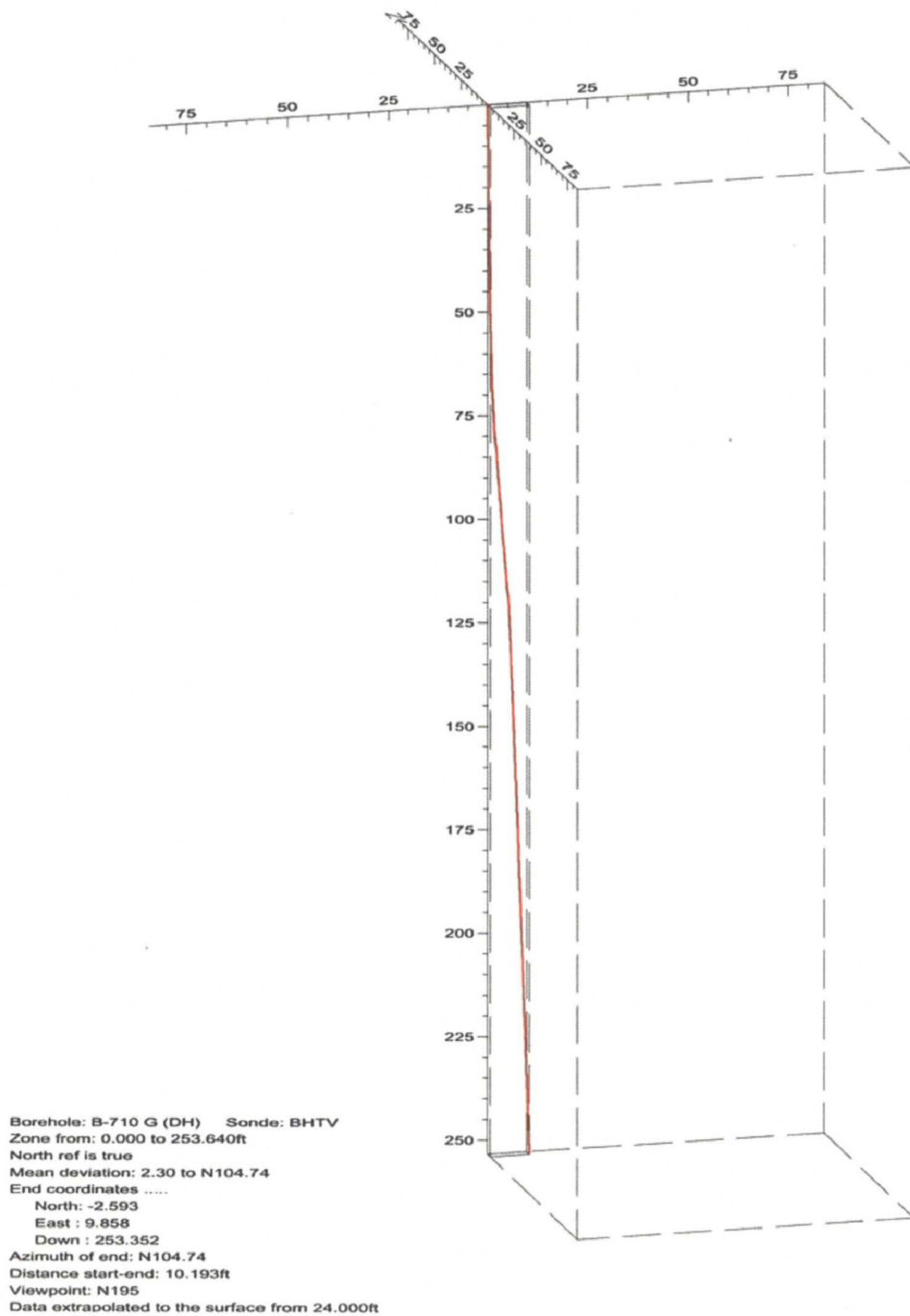


Figure 46. Boring B-710 G (DH), Deviation Projection (dimensions in feet)

### FPL Turkey Point COL Boring B-720 G (DH) Receiver to Receiver $V_s$ and $V_p$ Analysis

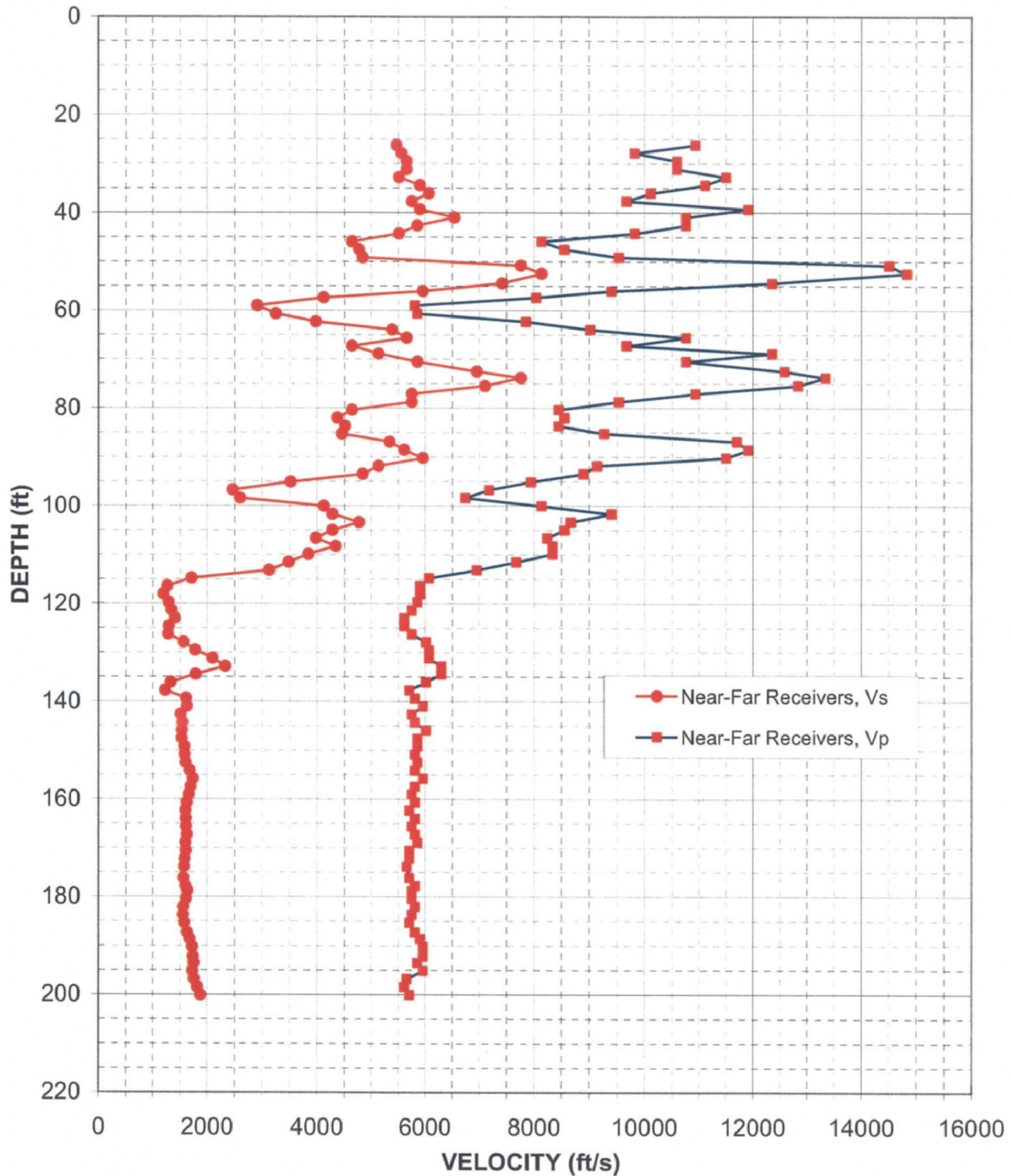


Figure 47: Boring B-720 G (DH), Suspension R1-R2 P- and  $S_H$ -wave velocities

Depth (feet)	V <sub>s</sub> (feet/sec)	V <sub>p</sub> (feet/sec)	Depth (feet)	V <sub>s</sub> (feet/sec)	V <sub>p</sub> (feet/sec)	Depth (feet)	V <sub>s</sub> (feet/sec)	V <sub>p</sub> (feet/sec)
26.3	5460	10930	108.3	4330	8330	190.3	1710	5950
27.9	5560	9800	109.9	3830	8330	192.3	1730	5950
29.5	5650	10580	111.6	3470	7660	193.6	1740	5850
31.2	5650	10580	113.2	3120	6940	195.2	1720	5950
32.8	5510	11490	114.8	1700	6060	196.9	1750	5650
34.5	5900	11110	116.5	1250	5900	198.5	1800	5600
36.1	6060	10100	118.1	1180	5900	200.1	1860	5700
37.7	5750	9660	119.8	1280	5850			
39.4	5900	11900	121.4	1330	5750			
41.0	6540	10750	123.0	1390	5600			
42.7	5850	10750	124.7	1280	5600			
44.3	5510	9800	126.3	1270	5750			
45.9	4630	8130	128.0	1550	6010			
47.6	4760	8550	129.6	1760	6060			
49.2	4830	9520	131.2	2080	6060			
50.9	7750	14490	132.9	2310	6290			
52.5	8130	14810	134.5	1770	6290			
54.5	7410	12350	136.2	1320	6010			
56.1	5950	9390	137.8	1210	5700			
57.4	4120	8030	139.4	1590	5800			
59.1	2900	5800	141.1	1610	5950			
60.7	3240	5850	142.7	1500	5750			
62.3	3970	7840	144.4	1530	5800			
64.0	5380	9010	146.0	1520	6010			
65.6	5650	10750	147.6	1520	5850			
67.3	4630	9660	149.3	1560	5850			
68.9	5130	12350	150.9	1570	5800			
70.5	5850	10750	152.6	1590	5850			
72.5	6940	12580	154.2	1660	5800			
73.8	7750	13330	155.8	1720	5950			
75.5	7090	12820	157.5	1680	5800			
77.1	5750	10930	159.1	1650	5750			
78.7	5750	9520	160.8	1610	5800			
80.4	4630	8440	162.4	1580	5700			
82.0	4360	8550	164.0	1590	5800			
83.7	4500	8440	165.7	1590	5750			
85.3	4440	9260	167.3	1610	5800			
86.9	5330	11700	169.0	1580	5850			
88.6	5600	11900	170.6	1590	5700			
90.2	5950	11490	172.2	1570	5700			
91.9	5130	9130	173.9	1560	5650			
93.5	4830	8890	176.2	1550	5700			
95.1	3510	7940	177.8	1580	5800			
96.8	2450	7170	178.8	1620	5750			
98.4	2580	6730	180.5	1590	5750			
100.1	4120	8130	182.1	1550	5800			
101.7	4270	9390	183.7	1540	5750			
103.4	4760	8660	185.4	1560	5700			
105.0	4270	8550	187.3	1620	5800			
106.6	3970	8230	188.7	1670	5900			

Table 15. Boring B-720 G (DH), Suspension R1-R2 depths and P- and S<sub>H</sub>-wave velocities

0.00	NGAM API Cs.	150.00
0.00	CGAM API Cs.	150.00

1.00	SPR Ohm	100.00	-500.00	SP Millivolt	500.00
1.00	LON Ohm M.	100.00	2.00	CALP Inch	12.00
1.00	SHN Ohm M.	100.00			

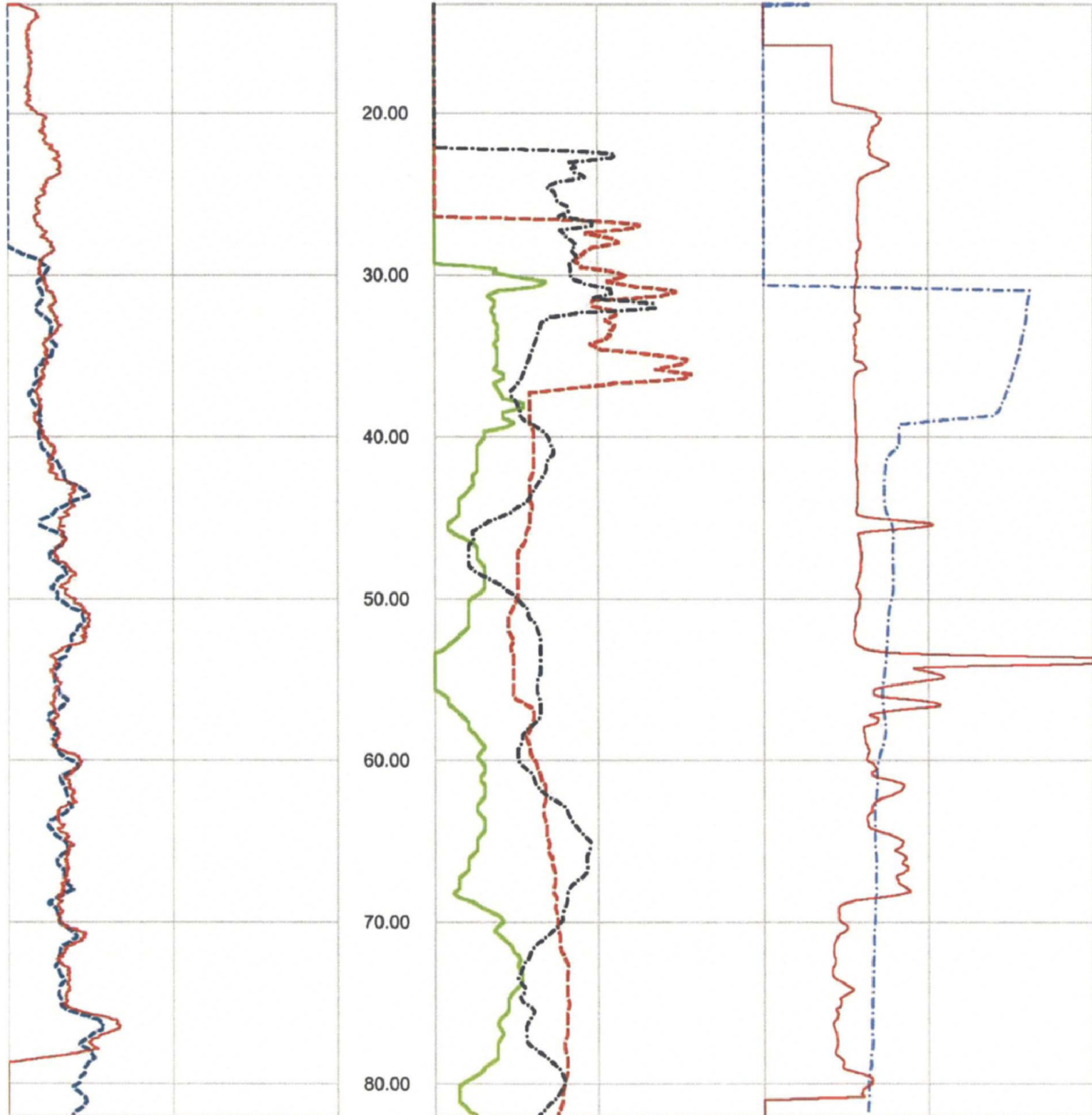


Figure 48. Boring B-720 G (DH) upper section, Caliper, Natural gamma, Resistivity and SP logs

0.00	NGAM API Cs.	200.00
0.00	CGAM API Cs.	200.00

1.00	SPR Ohm	100.00	-500.00	SP Millivolt	0.00
1.00	LON Ohm M.	100.00	2.00	CALP Inch	12.00
1.00	SHN Ohm M.	100.00			

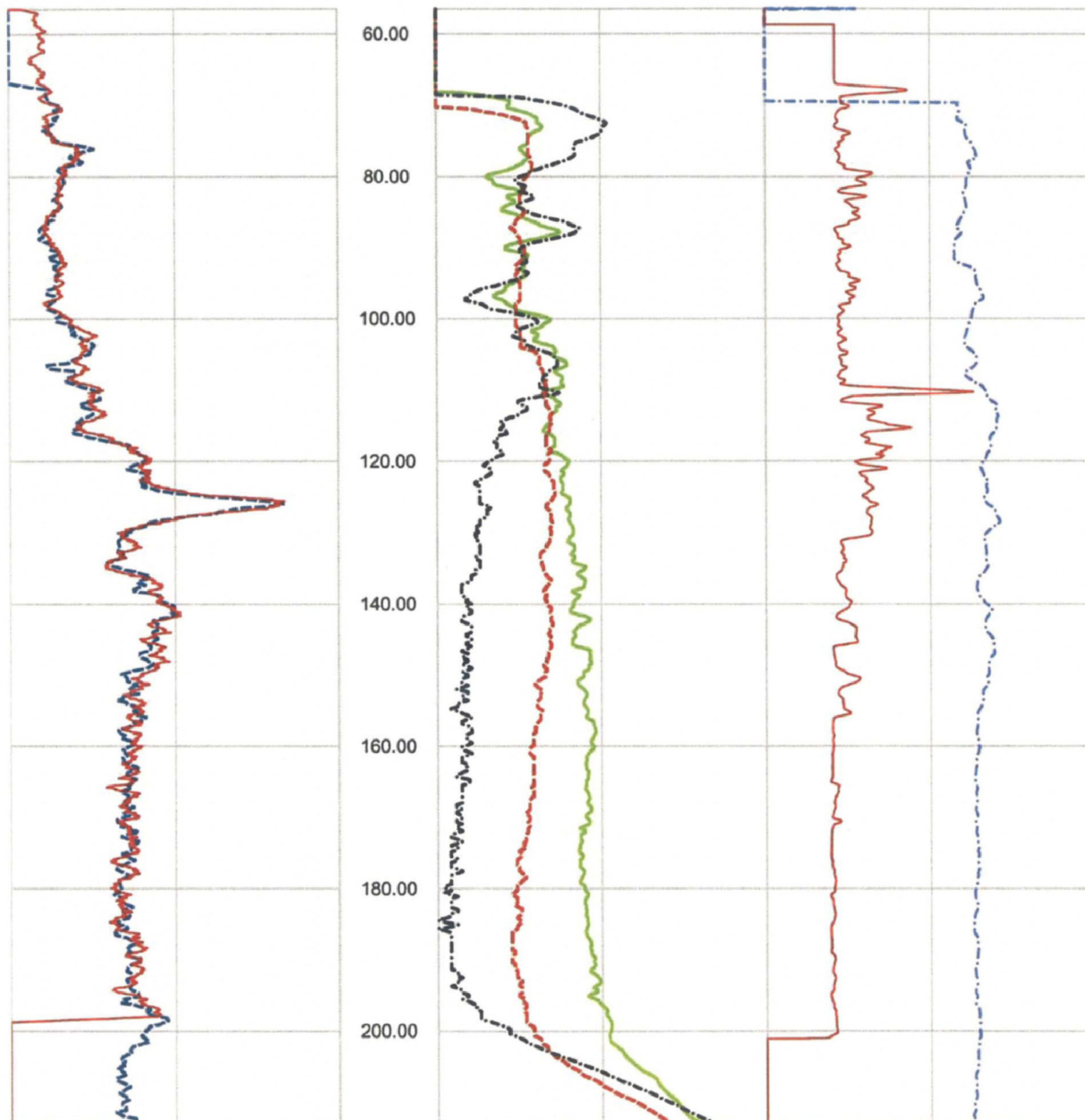


Figure 49. Boring B-720 G (DH) lower section, Caliper, Natural gamma, Resistivity and SP logs



Deviated borehole in orthographic projection, viewed from N155

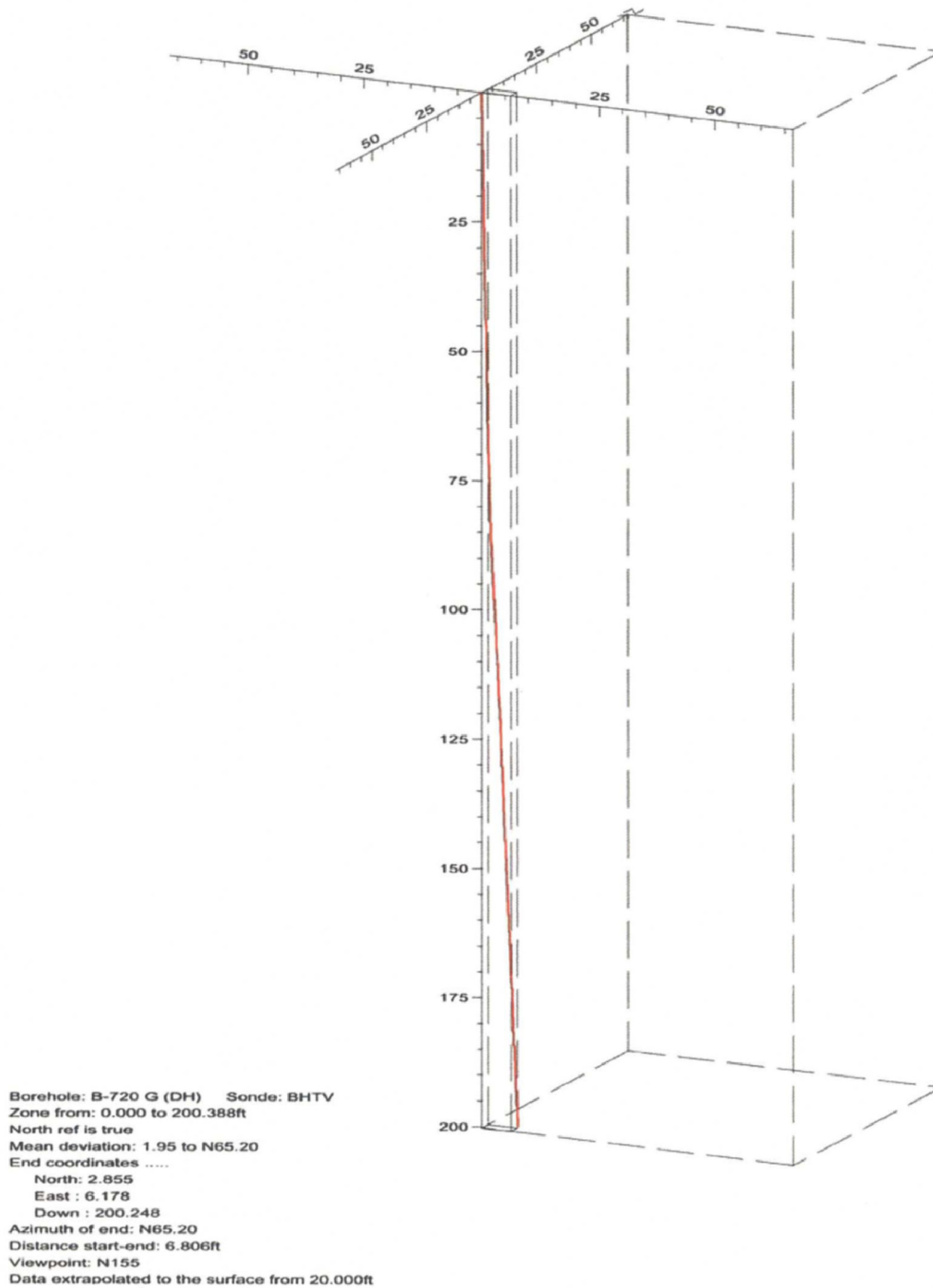


Figure 50. Boring B-720 G (DH), Deviation Projection (dimensions in feet)

**APPENDIX A**

**SUSPENSION VELOCITY MEASUREMENT**

**QUALITY ASSURANCE SUSPENSION SOURCE**

**TO RECEIVER ANALYSIS RESULTS**

### FPL Turkey Point COL Boring B-601 (DH) Source to Receiver and Receiver to Receiver Analysis

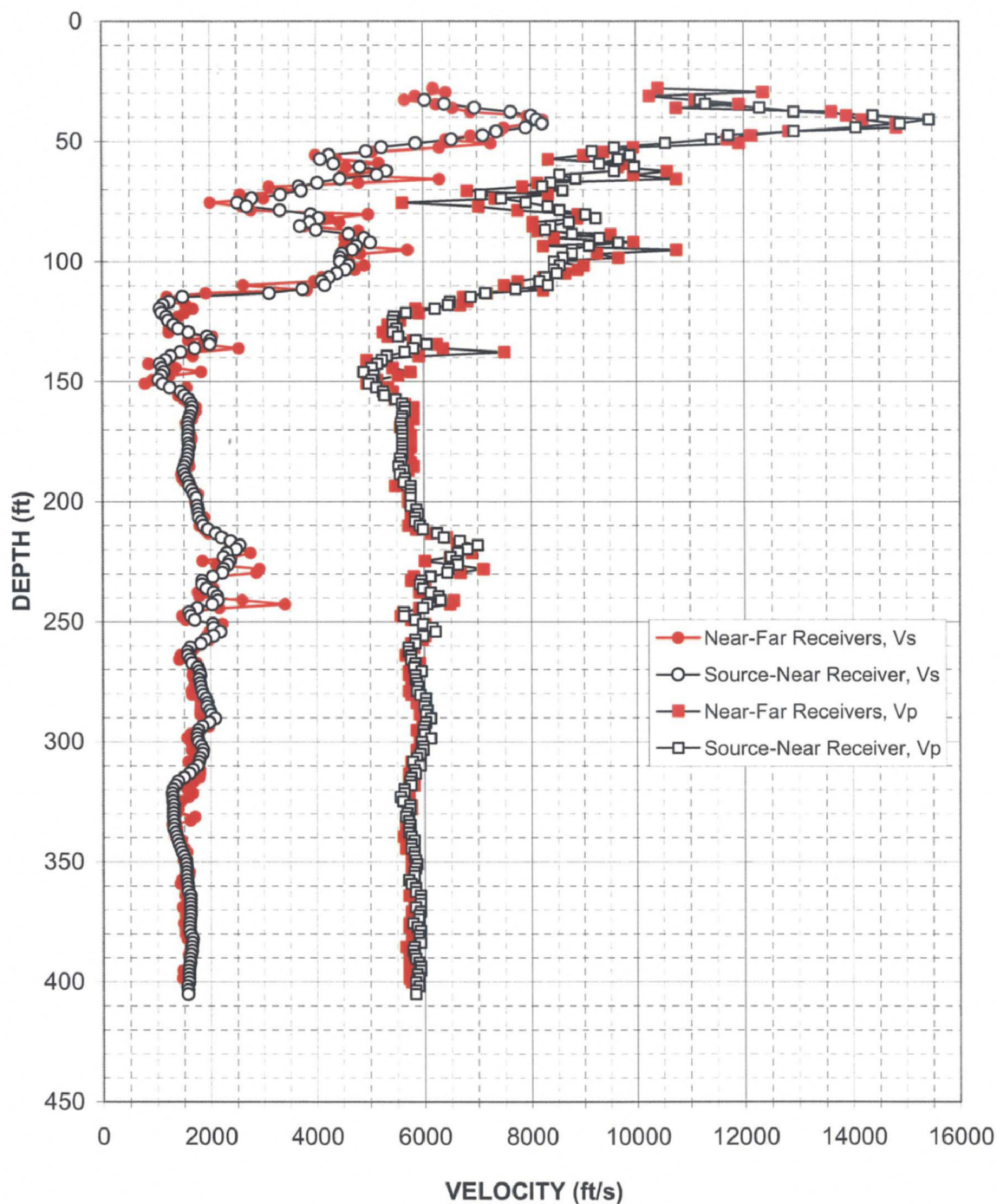


Figure A-1. Boring B-601 (DH), R1 - R2 high resolution analysis  
and S - R1 quality assurance analysis P- and S<sub>H</sub>-wave data

Depth (feet)	V <sub>s</sub> (feet/sec)	V <sub>p</sub> (feet/sec)	Depth (feet)	V <sub>s</sub> (feet/sec)	V <sub>p</sub> (feet/sec)	Depth (feet)	V <sub>s</sub> (feet/sec)	V <sub>p</sub> (feet/sec)
32.7	6030	11200	114.7	1490	6880	196.8	1690	5750
34.4	6390	11300	116.7	1230	6490	198.4	1730	5750
36.0	6960	12290	118.0	1120	6460	201.7	1750	5750
37.6	7630	12920	119.7	1060	6210	203.3	1760	5860
39.3	8010	14390	121.3	1090	5680	205.0	1770	5890
40.9	8120	15440	122.9	1180	5460	206.6	1780	5830
42.6	8220	14890	124.6	1210	5430	208.2	1830	5830
44.2	7910	14070	126.2	1320	5430	209.9	1870	5920
45.8	7360	12920	127.9	1400	5500	211.5	1950	5970
47.5	7110	11720	129.5	1590	5430	213.2	2100	6240
49.1	6530	11410	131.1	1950	5530	214.8	2210	6360
50.8	5860	10550	132.8	2010	5860	216.4	2380	6660
52.4	5230	9590	134.4	2000	6060	218.1	2550	6990
54.0	4950	9170	136.1	1720	5810	219.7	2480	6810
55.7	4250	9890	137.7	1450	5650	221.4	2310	6630
57.3	4080	9660	139.3	1260	5320	223.0	2240	6490
59.3	4340	9310	141.0	1160	5230	224.7	2360	6590
60.6	4830	9970	142.6	1060	5150	226.3	2330	6630
62.2	5320	9590	144.3	1100	5040	227.9	2240	6460
63.9	5150	8550	145.9	1130	4890	229.6	2220	6430
65.5	4460	8850	147.6	1080	5080	231.2	2040	6120
67.2	4030	8380	149.2	1030	5040	232.9	1840	5940
68.8	3680	8220	150.8	1110	4980	234.5	1840	5920
70.5	3720	8610	152.5	1240	5130	236.1	1920	5970
72.1	3330	7070	154.1	1450	5250	237.8	2060	6120
73.7	2790	7450	155.8	1520	5280	239.4	2120	6270
75.4	2520	7910	157.4	1590	5480	241.1	2140	6300
77.0	2690	8330	159.0	1640	5600	242.7	2030	6060
78.7	3320	8550	160.7	1660	5650	244.3	1750	5970
80.3	3910	9040	162.3	1640	5650	246.0	1590	5630
81.9	4060	9240	164.3	1620	5600	247.6	1630	5630
83.6	3880	8730	165.6	1590	5600	249.3	1700	5830
85.2	3700	8380	167.2	1580	5580	250.9	2040	5970
86.9	4010	8270	168.9	1580	5580	252.5	2060	6150
88.5	4620	8790	170.5	1590	5600	254.2	2180	6210
90.1	4910	9310	172.2	1580	5600	255.8	2060	5970
92.1	5020	9660	173.8	1580	5600	257.5	1900	5830
93.4	4760	9110	175.8	1590	5600	259.1	1810	5830
95.1	4690	8790	177.1	1600	5600	260.7	1610	5700
96.7	4490	8790	178.7	1580	5600	262.4	1560	5700
98.3	4460	8610	180.4	1580	5600	264.0	1570	5750
100.0	4460	8440	182.0	1570	5550	265.7	1610	5750
101.6	4620	8550	183.6	1540	5580	267.3	1650	5830
103.3	4550	8440	185.3	1510	5530	268.9	1750	5810
104.9	4400	8500	186.9	1490	5630	270.6	1780	5940
106.5	4250	8270	188.6	1520	5550	272.2	1800	5830
108.2	4110	8170	190.2	1550	5650	273.9	1780	5830
109.8	4160	8330	191.8	1590	5630	275.5	1800	5860
111.5	3750	7720	193.5	1600	5750	277.1	1810	5890
113.1	3120	7150	195.1	1650	5750	278.8	1830	5860

Table A-1. Boring B-601 (DH), S - R1 quality assurance analysis P- and S<sub>H</sub>-wave data