

NGAM API Cs.	
0.00	150.00
CGAM API Cs.	
0.00	150.00

SPR Ohm		SP Millivolt	
0.00	10.00	-500.00	0.00
LON Ohm M.		CALP Inch	
0.00	10.00	2.00	12.00
SHN Ohm M.			
0.00	10.00		

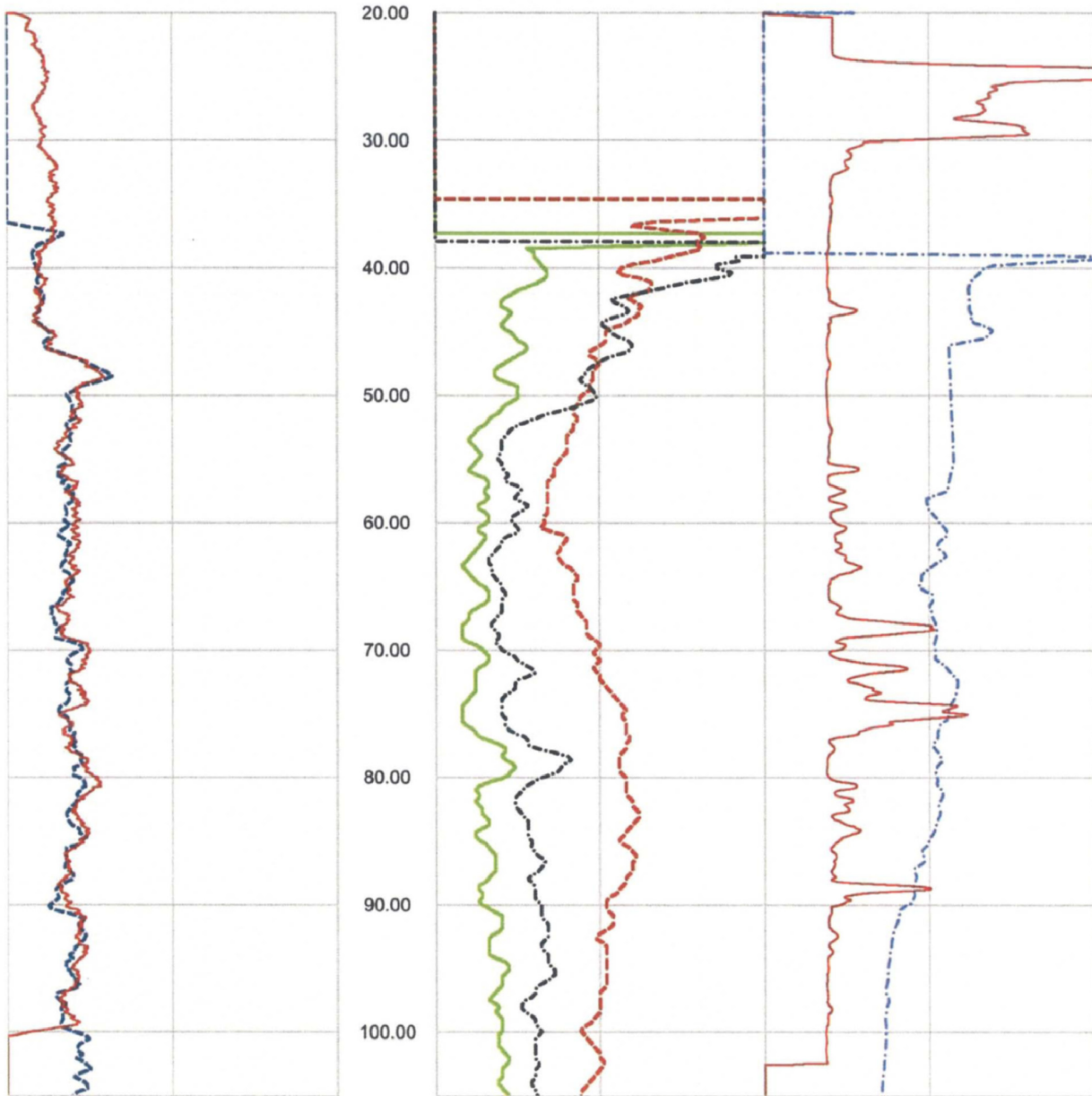


Figure 14. Boring B-604 (DH) upper section, Caliper, Natural gamma, Resistivity and SP logs

0.00	NGAM API Cs.	150.00
0.00	CGAM API Cs.	150.00

0.00	SPR Ohm	10.00	-100.00	SP Millivolt	400.00
0.00	LON Ohm M.	10.00	2.00	CALP Inch	12.00
0.00	SHN Ohm M.	10.00			

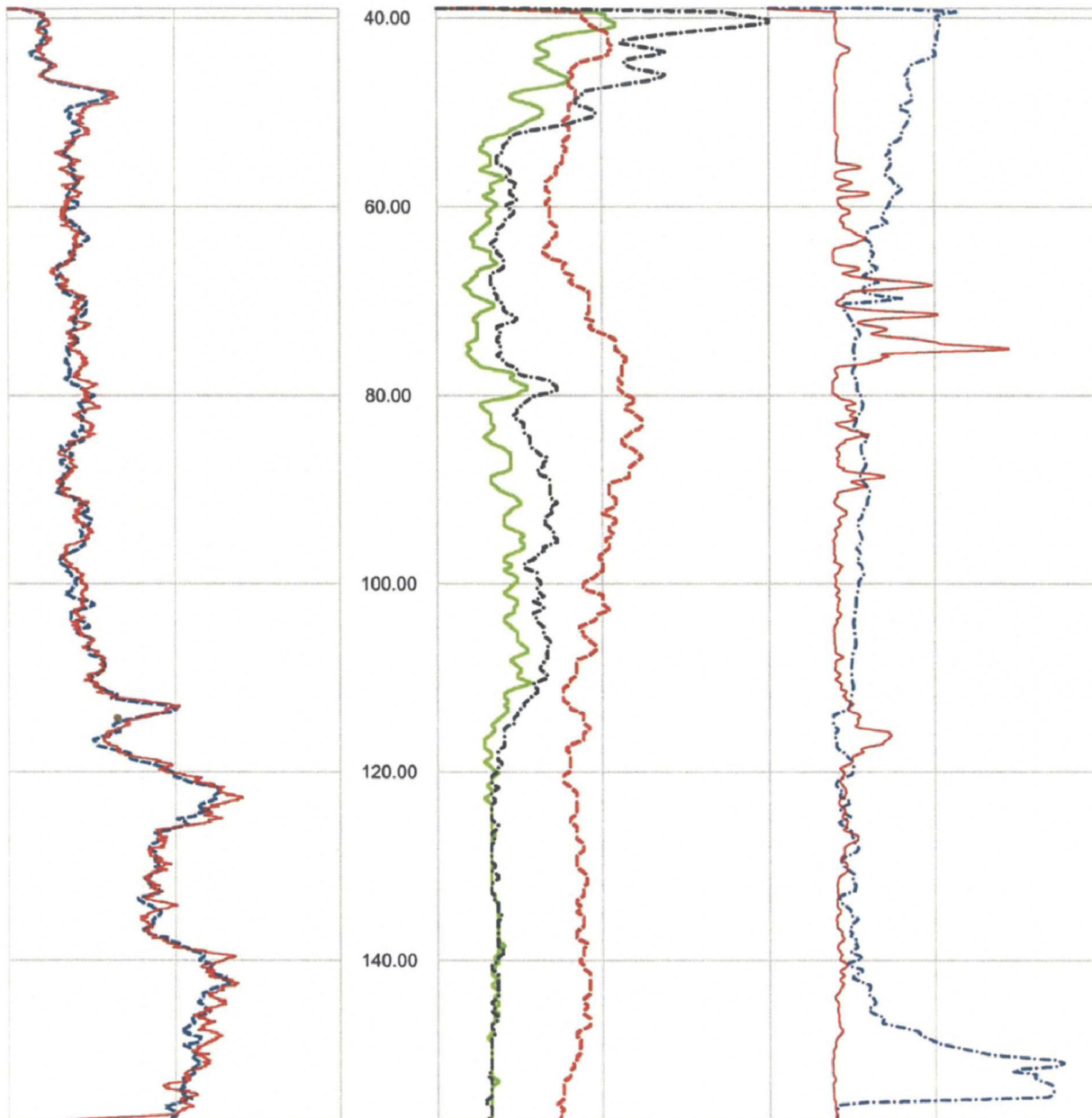


Figure 15. Boring B-604 (DH) lower section, Caliper, Natural gamma, Resistivity and SP logs

Deviated borehole in orthographic projection, viewed from N195

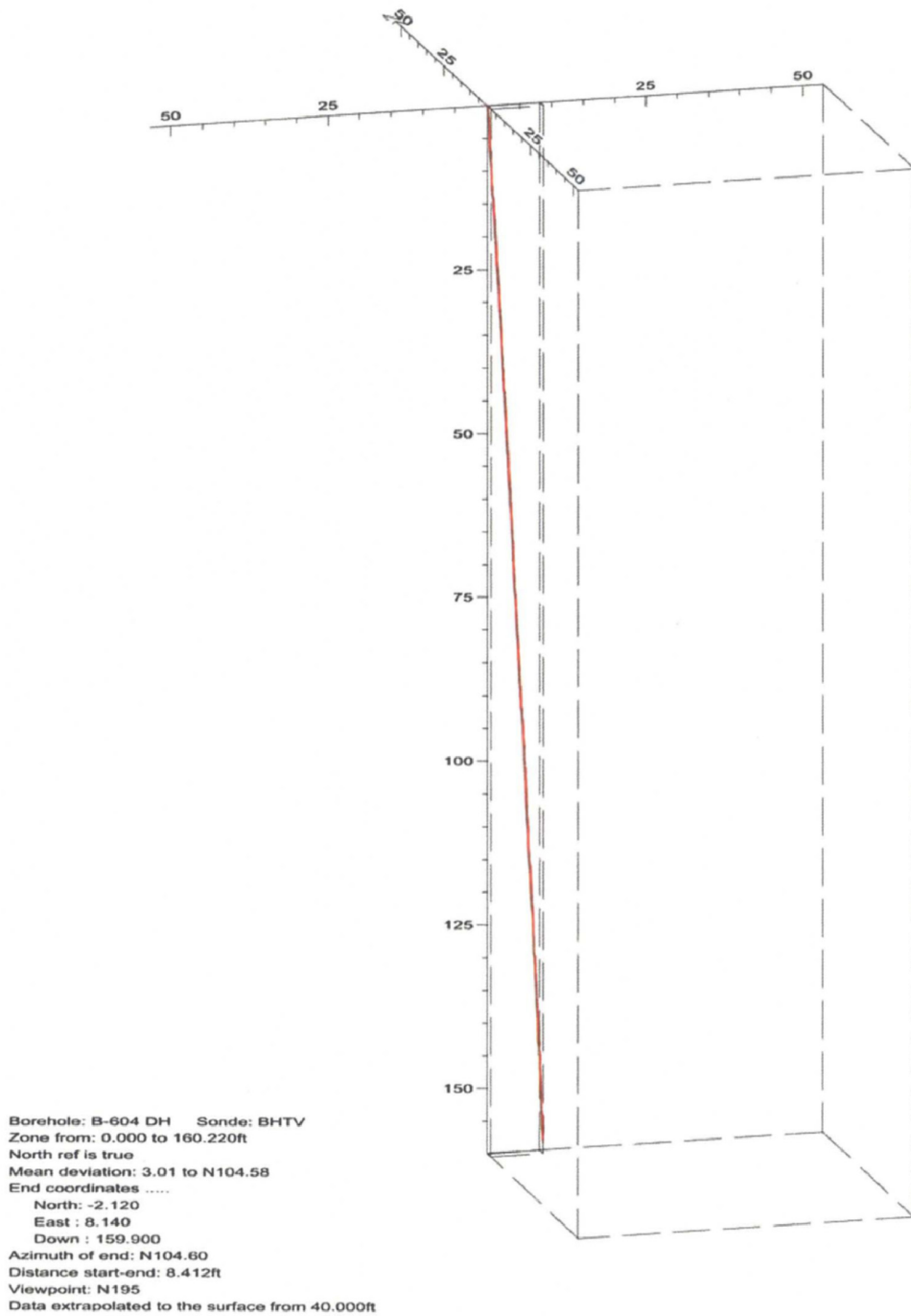


Figure 16. Boring B-604 (DH), Deviation Projection (dimensions in feet)

FPL Turkey Point COL Boring B-608 (DH) Receiver to Receiver V_s and V_p Analysis

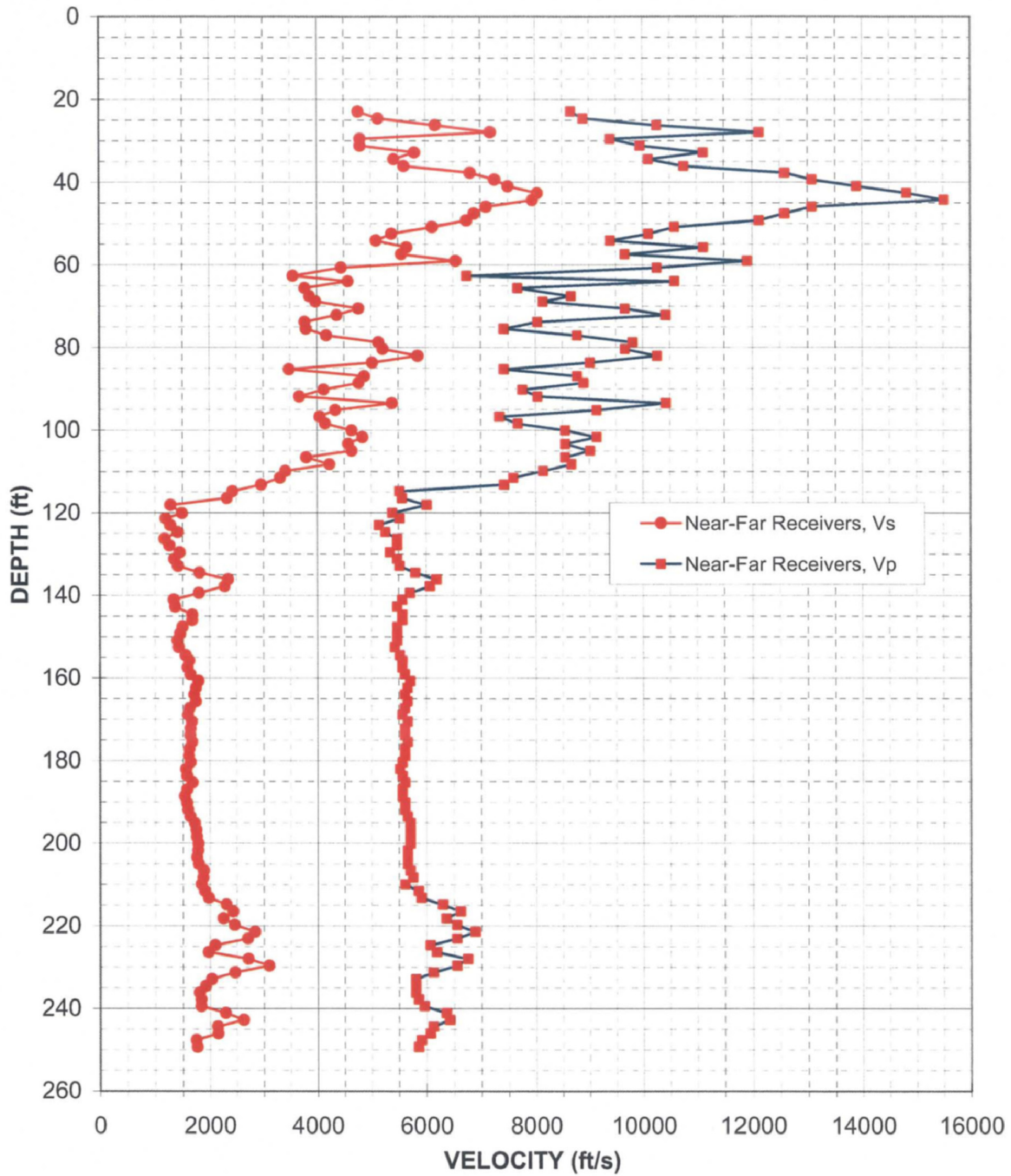


Figure 17: Boring B-608 (DH), Suspension R1-R2 P- and S_H -wave velocities

Depth (feet)	V _s (feet/sec)	V _p (feet/sec)	Depth (feet)	V _s (feet/sec)	V _p (feet/sec)	Depth (feet)	V _s (feet/sec)	V _p (feet/sec)
23.0	4760	8660	105.0	4630	9010	187.0	1570	5560
24.6	5130	8890	106.6	3790	8550	188.7	1530	5560
26.3	6170	10260	108.3	4220	8660	190.3	1560	5600
27.9	7170	12120	109.9	3400	8130	191.9	1590	5600
29.5	4800	9390	111.6	3300	7580	193.6	1630	5650
31.2	4800	9950	113.2	2950	7410	195.2	1710	5700
32.8	5800	11110	114.8	2420	5510	196.9	1740	5700
34.5	5420	10100	116.5	2310	5560	198.5	1750	5700
36.1	5600	10750	118.1	1270	6010	200.1	1770	5700
37.7	6800	12580	120.1	1480	5380	201.8	1770	5650
39.4	7250	13070	121.4	1190	5510	203.4	1750	5650
41.0	7490	13890	123.0	1270	5130	205.1	1780	5650
42.7	8030	14810	124.7	1400	5250	206.7	1870	5700
44.3	7940	15500	126.3	1170	5460	208.3	1860	5750
45.9	7090	13070	128.0	1250	5460	210.0	1830	5600
47.6	6870	12580	129.6	1440	5330	211.6	1890	5850
49.2	6730	12120	131.2	1340	5460	213.3	1970	5900
50.9	6120	10580	132.9	1410	5510	214.9	2290	6290
52.5	5380	10100	134.5	1800	5800	216.5	2420	6600
54.1	5090	9390	136.2	2330	6170	218.2	2240	6350
55.8	5650	11110	137.8	2270	6060	219.8	2440	6540
57.4	5560	9660	139.4	1790	5700	221.5	2820	6870
59.1	6540	11900	141.1	1330	5560	223.1	2690	6540
60.7	4440	10260	142.7	1360	5460	224.7	2080	6060
62.7	3550	6730	144.7	1670	5560	226.4	1960	6170
64.0	4570	10580	146.0	1670	5560	228.0	2700	6730
65.6	3770	7660	147.6	1490	5460	229.7	3090	6540
67.6	3850	8660	149.3	1440	5460	231.3	2450	6120
68.9	3970	8130	150.9	1390	5460	232.9	2020	5800
70.5	4760	9660	152.6	1420	5420	234.6	1910	5800
72.2	4360	10420	154.5	1540	5510	236.2	1800	5800
73.8	3770	8030	155.8	1610	5560	237.9	1830	5850
75.5	3790	7410	157.5	1580	5560	239.5	1830	5950
77.1	4170	8770	159.1	1630	5600	241.1	2280	6350
78.7	5130	9800	160.8	1780	5700	242.8	2610	6410
80.4	5210	9660	162.4	1730	5650	244.4	2130	6120
82.0	5850	10260	164.0	1700	5600	246.1	2140	6060
83.7	5010	9010	165.7	1730	5650	247.7	1740	5900
85.3	3470	7410	167.3	1620	5600	249.3	1750	5850
86.9	4870	8770	169.0	1590	5560			
88.6	4760	8890	170.6	1650	5650			
90.2	4120	7750	172.2	1630	5600			
91.9	3660	8030	173.9	1630	5600			
93.5	5380	10420	175.5	1660	5650			
95.1	4330	9130	177.2	1610	5600			
96.8	4040	7330	178.8	1600	5600			
98.4	4140	7660	180.5	1630	5560			
100.1	4630	8550	182.1	1550	5510			
101.7	4830	9130	183.7	1570	5560			
103.4	4570	8550	185.4	1670	5600			

Table 8. Boring B-608 (DH), Suspension R1-R2 depths and P- and S_H-wave velocities

NGAM API Cs.	
0.00	150.00
CGAM API Cs.	
0.00	150.00

SPR Ohm		SP Millivolt	
0.00	15.00	-200.00	300.00
LON Ohm M.		CALP Inch	
0.00	15.00	2.00	12.00
SHN Ohm M.			
0.00	15.00		

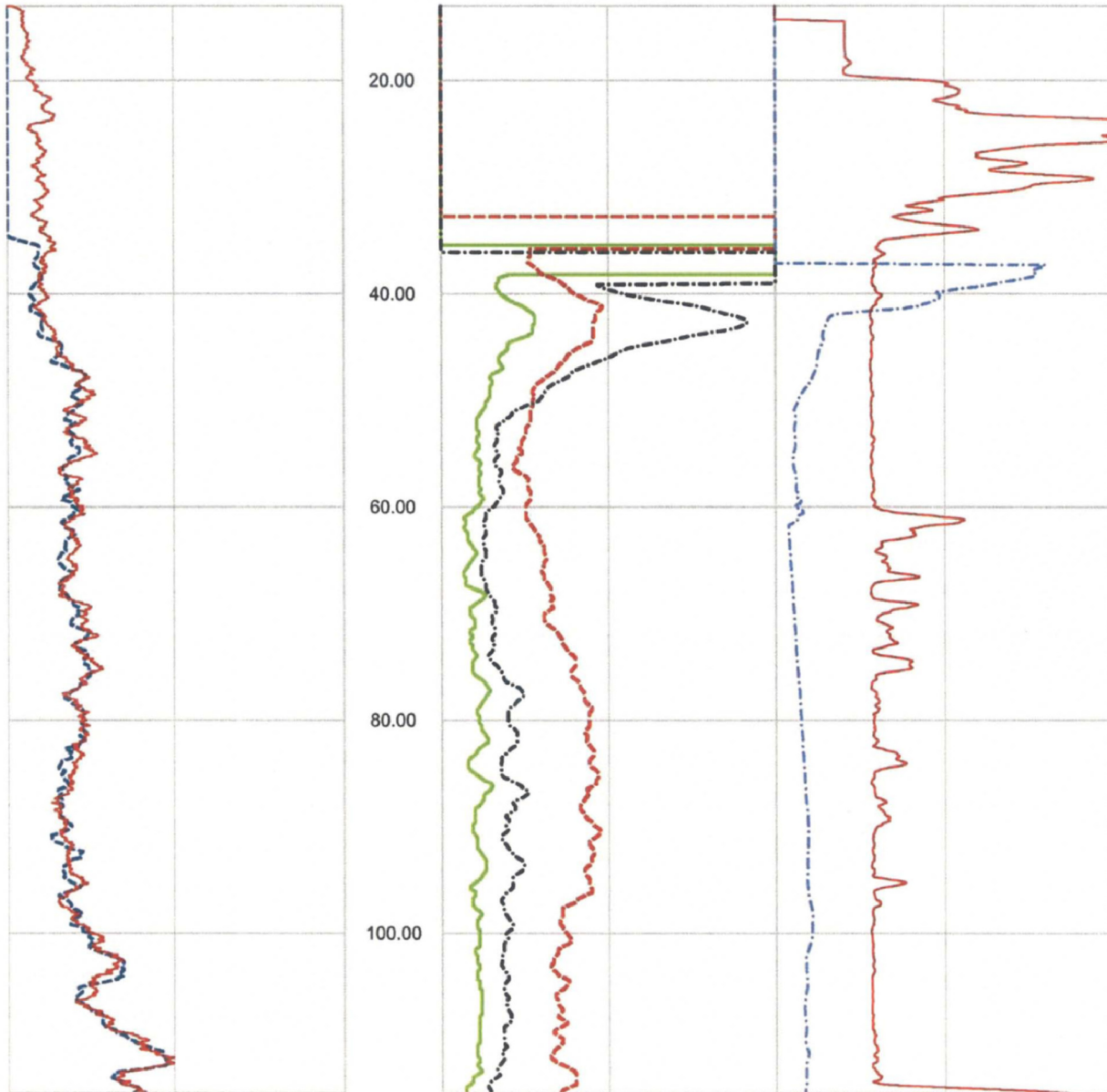


Figure 18. Boring B-608 (DH) upper section, Caliper, Natural gamma, Resistivity and SP logs

0.00	NGAM API Cs.	200.00
0.00	CGAM API Cs.	200.00

1.00	SPR Ohm	100.00	-500.00	SP Millivolt	500.00
1.00	LON Ohm M.	100.00	2.00	CALP Inch	12.00
1.00	SHN Ohm M.	100.00			

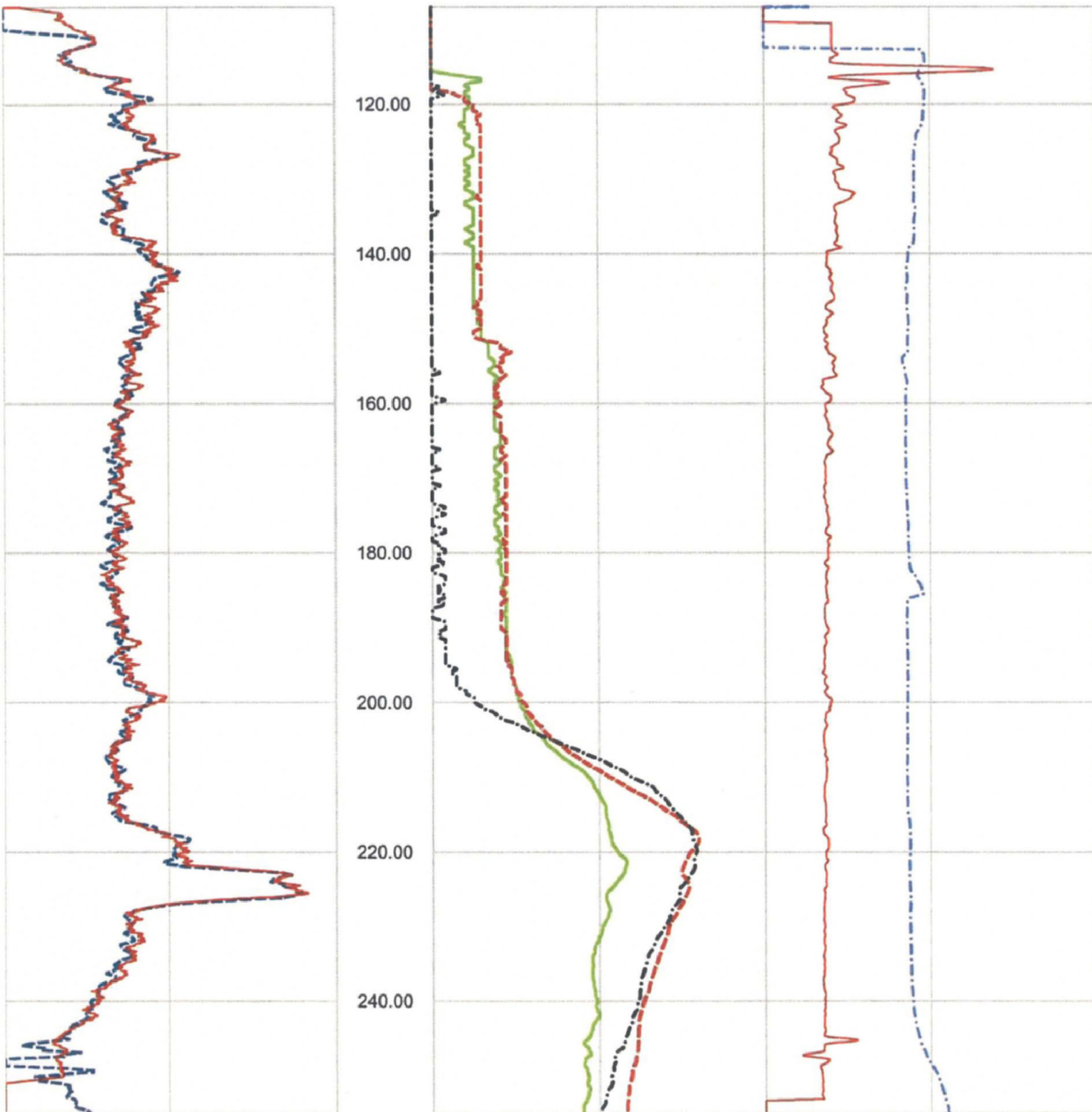


Figure 19. Boring B-608 (DH) lower section, Caliper, Natural gamma, Resistivity and SP logs

Deviated borehole in orthographic projection, viewed from N96

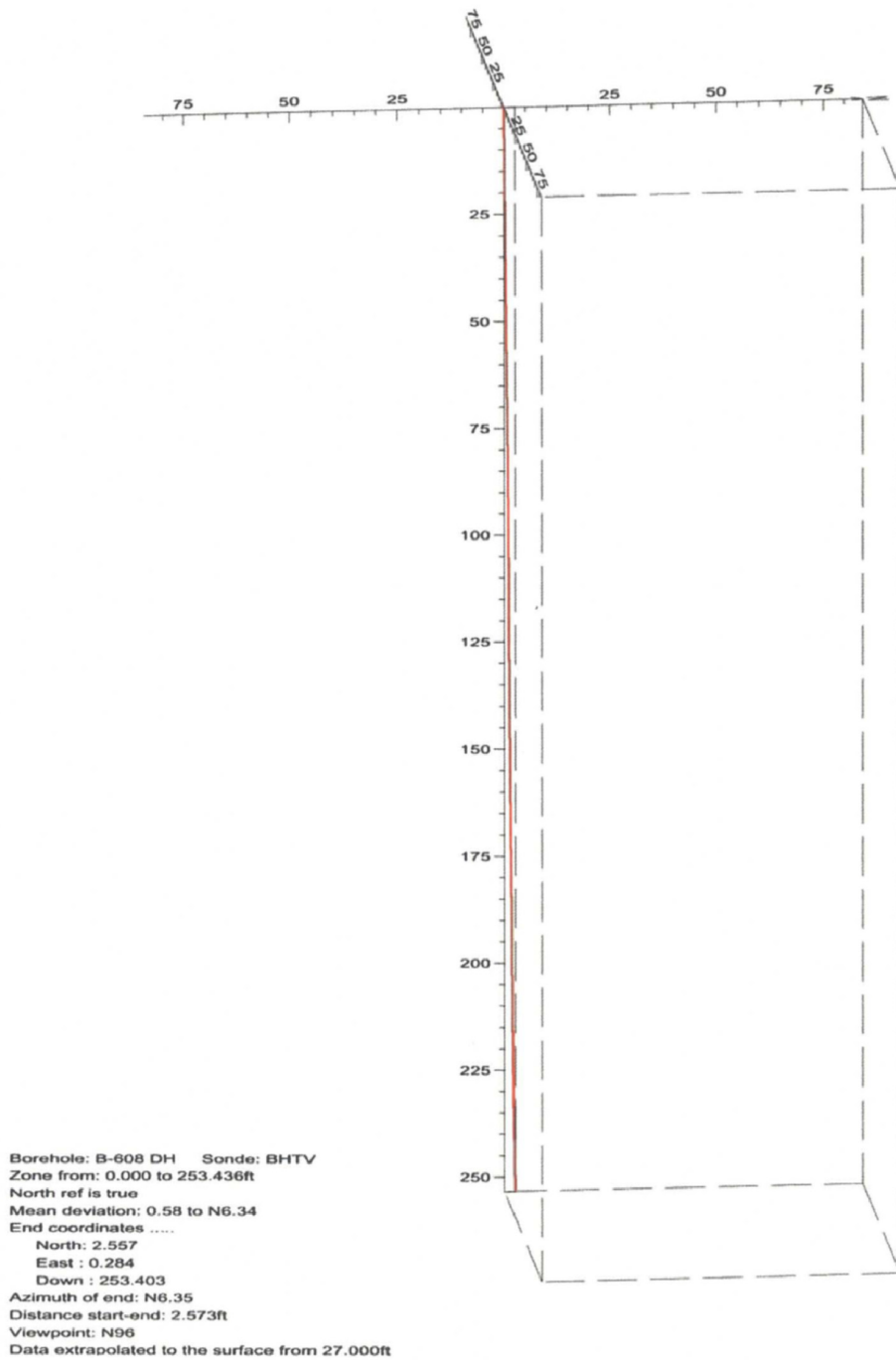


Figure 20. Boring B-608 (DH), Deviation Projection (dimensions in feet)

FPL Turkey Point COL Boring B-610 (DH) Receiver to Receiver V_s and V_p Analysis

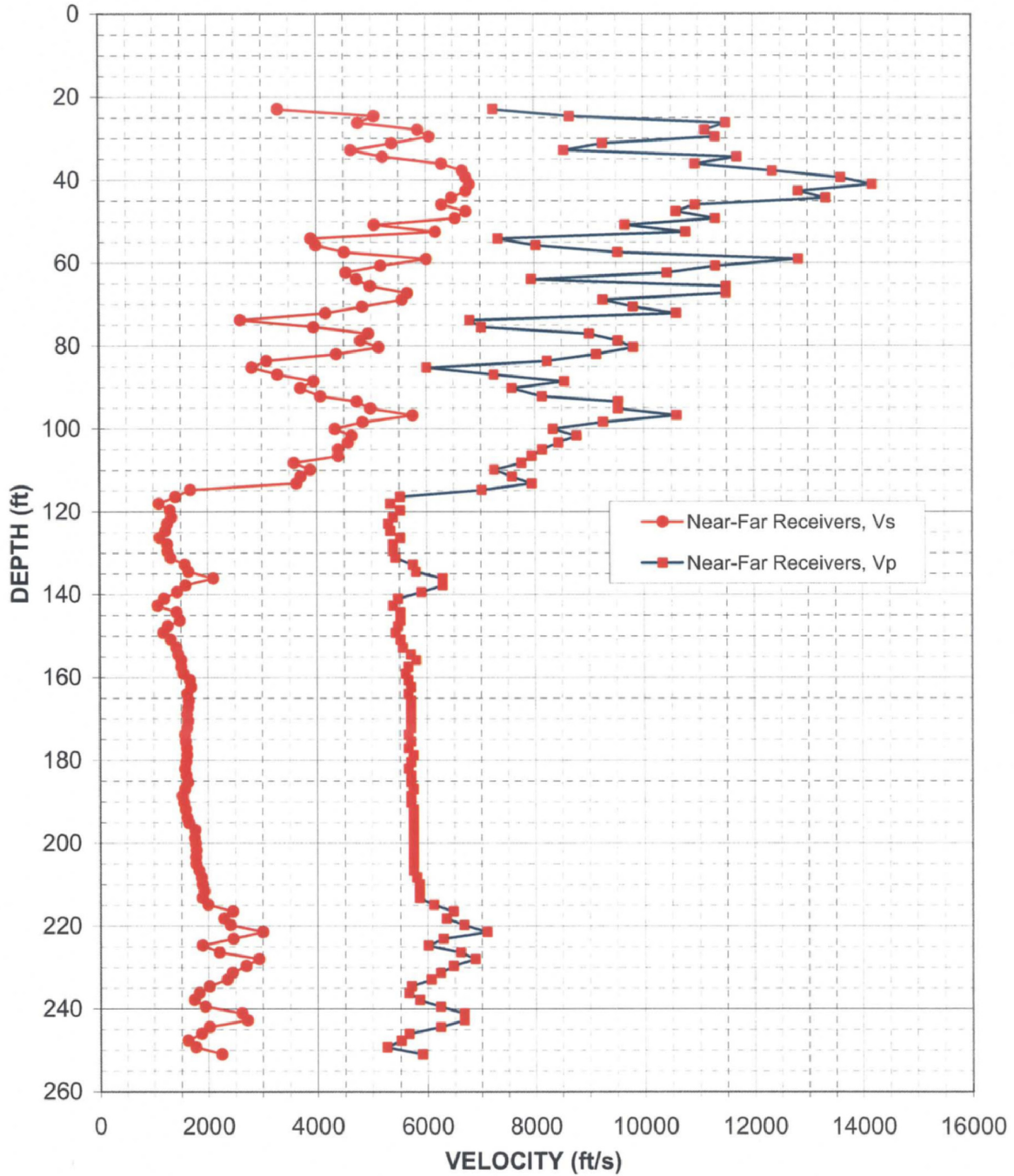


Figure 21: Boring B-610 (DH), Suspension R1-R2 P- and S_H -wave velocities

Depth (feet)	V _s (feet/sec)	V _p (feet/sec)	Depth (feet)	V _s (feet/sec)	V _p (feet/sec)	Depth (feet)	V _s (feet/sec)	V _p (feet/sec)
23.0	3300	7250	105.0	4390	8130	187.0	1560	5750
24.6	5050	8660	106.6	4390	7940	188.7	1520	5700
26.3	4760	11490	108.3	3580	7750	190.3	1540	5700
27.9	5850	11110	109.9	3880	7250	191.9	1570	5750
29.5	6060	11300	111.6	3700	7580	193.9	1600	5750
31.2	5380	9260	113.2	3620	7940	195.2	1630	5750
32.8	4630	8550	114.8	1680	7020	196.9	1750	5750
34.5	5210	11700	116.5	1390	5510	198.8	1740	5750
36.1	6290	10930	118.1	1090	5330	200.1	1750	5750
37.7	6670	12350	119.8	1300	5510	201.8	1770	5750
39.4	6730	13610	121.4	1320	5380	203.4	1760	5750
41.0	6800	14180	123.0	1240	5290	205.1	1760	5750
42.7	6730	12820	124.7	1210	5330	206.7	1820	5750
44.3	6470	13330	126.3	1100	5510	208.3	1870	5800
45.9	6290	10930	128.0	1240	5380	210.0	1880	5850
47.6	6730	10580	129.6	1250	5380	211.6	1920	5850
49.2	6540	11300	131.2	1310	5420	213.3	1880	5850
50.9	5050	9660	132.9	1560	5750	214.9	1980	6120
52.5	6170	10750	134.5	1630	5800	216.5	2440	6470
54.1	3900	7330	136.2	2100	6290	218.2	2280	6350
55.8	3990	8030	137.8	1580	6290	219.8	2400	6670
57.4	4500	9520	139.4	1420	5900	221.5	2990	7090
59.1	6010	12820	141.1	1180	5460	223.1	2450	6290
60.7	5170	11300	142.7	1060	5380	224.7	1880	6010
62.3	4540	10420	144.4	1410	5510	226.4	2190	6600
64.0	4730	7940	146.3	1470	5510	228.0	2920	6870
65.6	4980	11490	147.6	1250	5460	229.7	2690	6470
67.3	5650	11490	149.3	1170	5420	231.3	2430	6230
68.9	5560	9260	150.9	1310	5510	232.9	2340	6060
70.5	4830	9800	152.9	1410	5560	234.6	2010	5700
72.2	4170	10580	154.5	1440	5700	236.2	1820	5650
73.8	2600	6800	155.8	1500	5800	237.9	1730	5850
75.5	3940	7020	157.5	1500	5650	239.5	1930	6230
77.1	4940	9010	159.1	1540	5600	241.1	2600	6670
78.7	4800	9520	160.8	1660	5650	242.8	2710	6670
80.4	5130	9800	162.4	1680	5700	244.4	2010	6230
82.0	4360	9130	164.0	1610	5650	246.1	1860	5650
83.7	3090	8230	165.7	1630	5700	247.7	1610	5510
85.3	2810	6010	167.3	1620	5700	249.3	1750	5250
86.9	3280	7250	169.0	1600	5700	251.0	2240	5900
88.6	3940	8550	170.6	1620	5700			
90.2	3700	7580	172.2	1600	5700			
92.2	4070	8130	173.9	1560	5650			
93.5	4730	9520	175.5	1580	5700			
95.1	4980	9520	177.2	1590	5650			
96.8	5750	10580	178.8	1600	5750			
98.4	4830	9260	180.5	1580	5700			
100.1	4330	8330	182.1	1560	5650			
101.7	4630	8770	183.7	1590	5700			
103.4	4570	8440	185.4	1620	5700			

Table 9. Boring B-610 (DH), Suspension R1-R2 depths and P- and S_H-wave velocities

NGAM API Cs.	
0.00	150.00
CGAM API Cs.	
0.00	150.00

SPR Ohm		SP Millivolt	
0.00	10.00	-500.00	0.00
LON Ohm M.		CALP Inch	
0.00	10.00	2.00	12.00
SHN Ohm M.			
0.00	10.00		

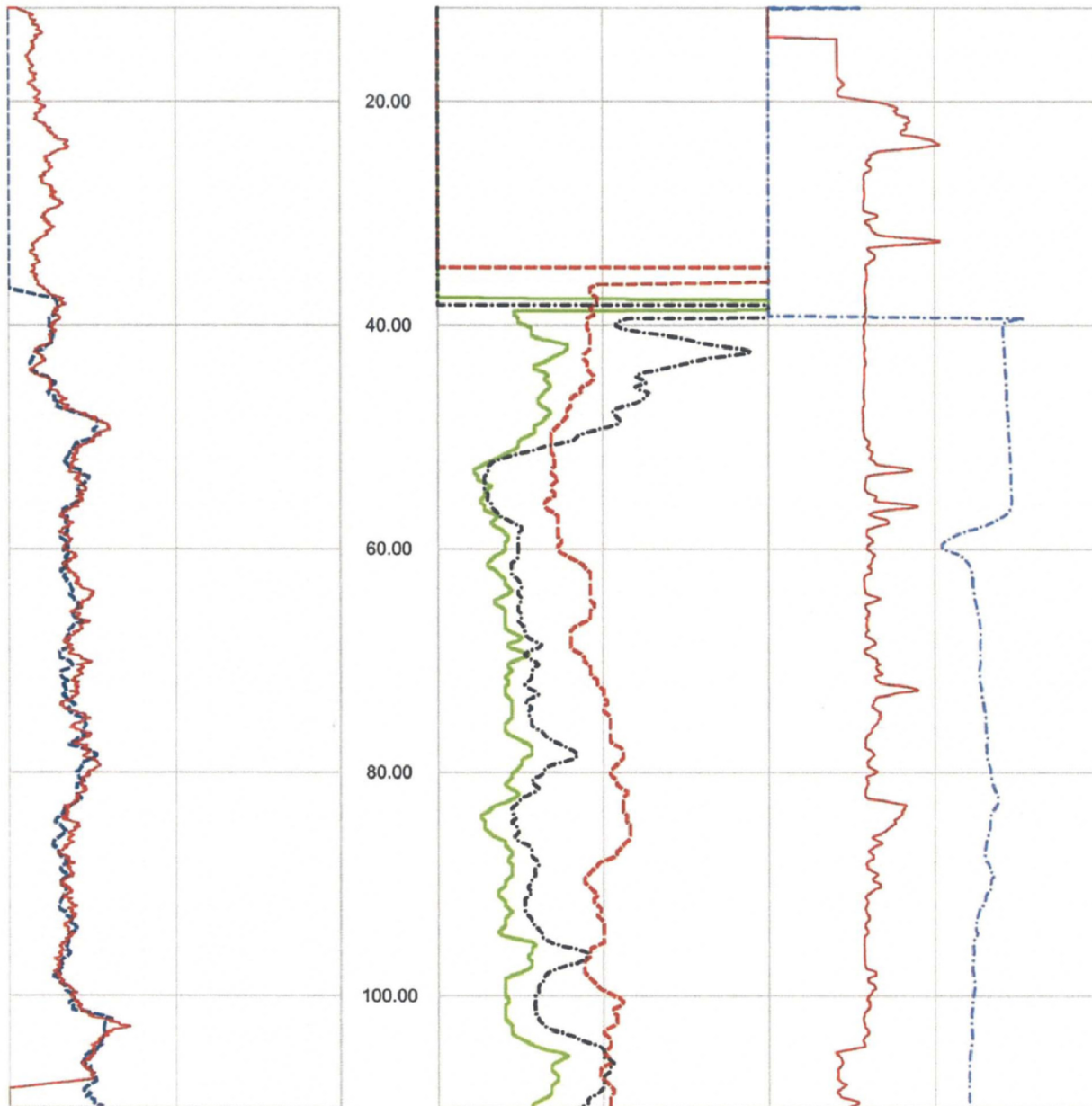


Figure 22. Boring B-610 (DH) upper section, Caliper, Natural gamma, Resistivity and SP logs

NGAM API Cs.	
0.00	250.00
CGAM API Cs.	
0.00	250.00

1.00	SPR Ohm	100.00	-500.00	SP Millivolt	0.00
1.00	LON Ohm M.	100.00	2.00	CALP Inch	12.00
1.00	SHN Ohm M.	100.00			

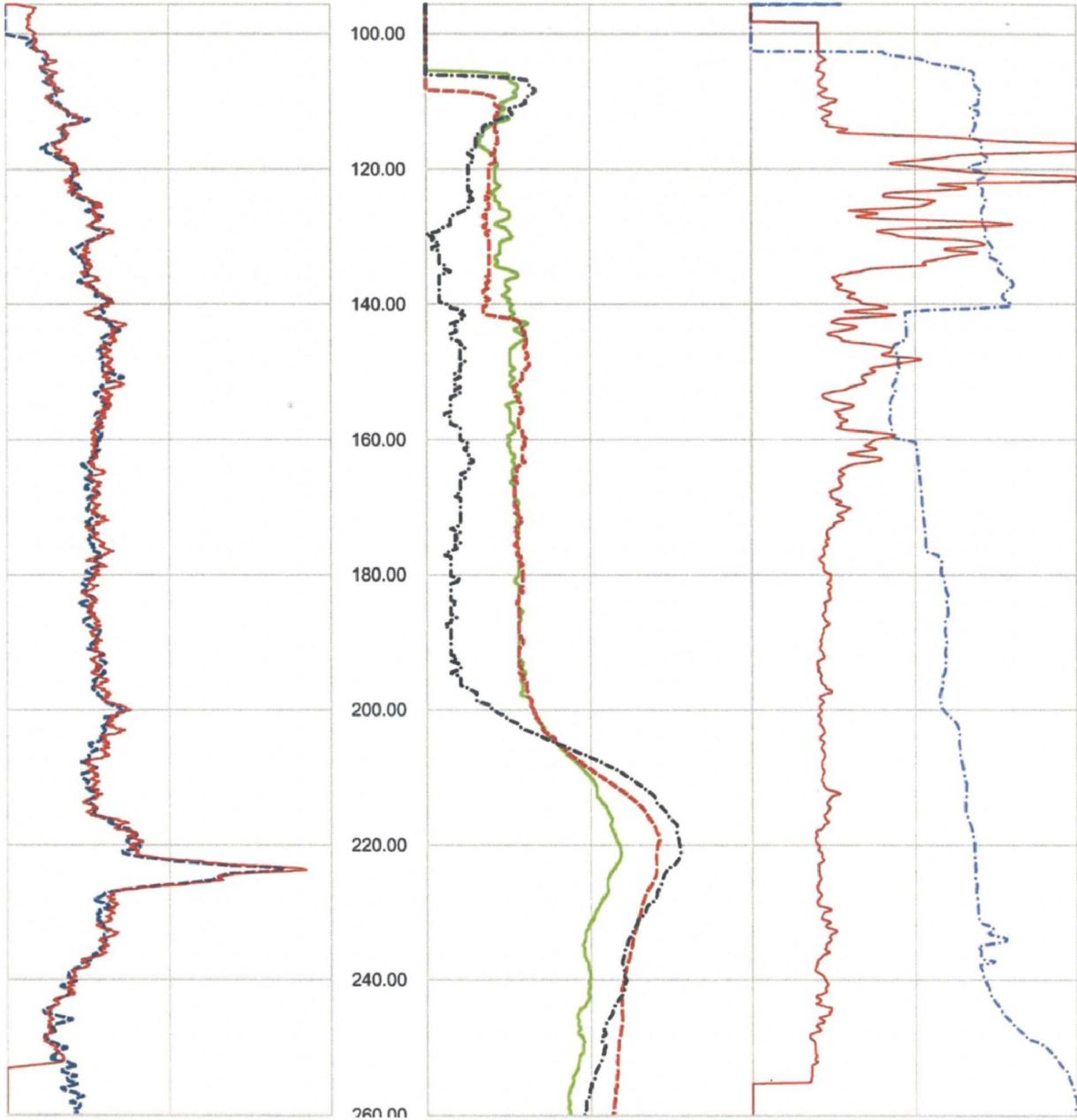


Figure 23. Boring B-610 (DH) lower section, Caliper, Natural gamma, Resistivity and SP logs

Deviated borehole in orthographic projection, viewed from N18

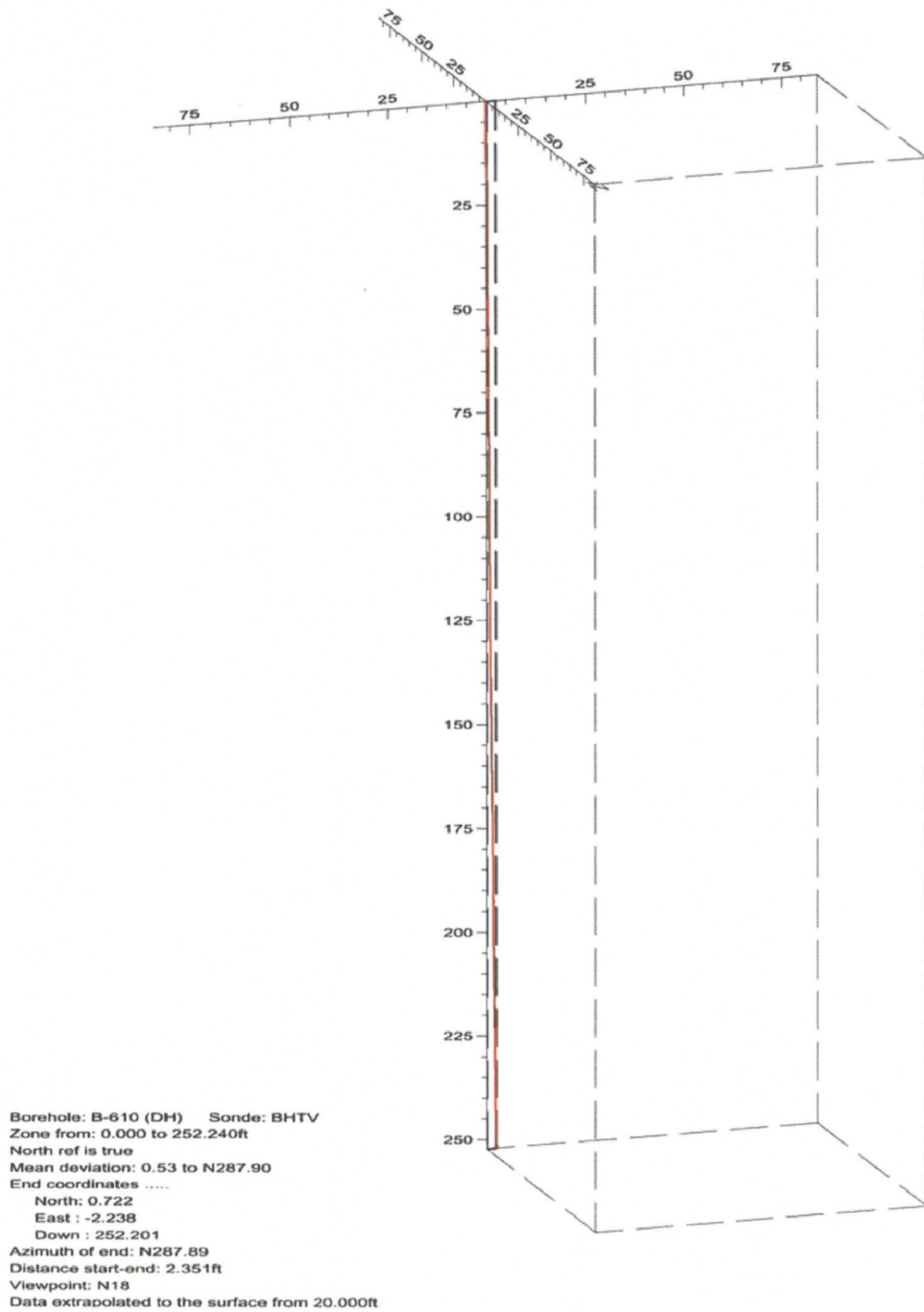


Figure 24. Boring B-610 (DH), Deviation Projection (dimensions in feet)

FPL Turkey Point COL Boring B-620 (DH) Receiver to Receiver V_s and V_p Analysis

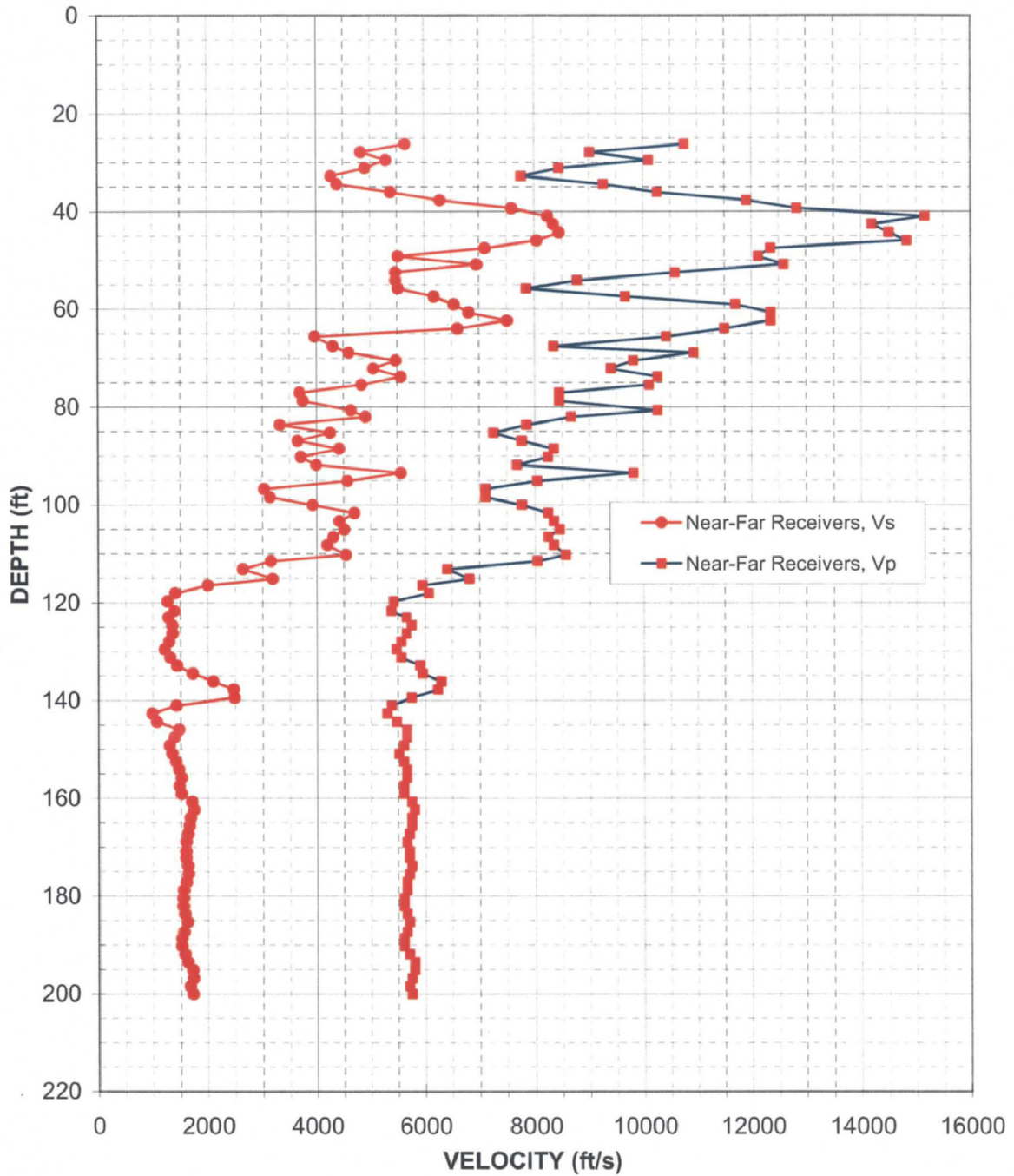


Figure 25: Boring B-620 (DH), Suspension R1-R2 P- and S_H -wave velocities

Depth (feet)	V _s (feet/sec)	V _p (feet/sec)	Depth (feet)	V _s (feet/sec)	V _p (feet/sec)	Depth (feet)	V _s (feet/sec)	V _p (feet/sec)
26.3	5650	10750	108.3	4190	8330	190.3	1510	5600
27.9	4830	9010	110.2	4540	8550	191.9	1560	5700
29.5	5290	10100	111.6	3140	8030	193.6	1610	5800
31.2	4900	8440	113.2	2620	6410	195.2	1710	5800
32.8	4270	7750	115.2	3170	6800	196.9	1720	5750
34.5	4390	9260	116.5	1980	5950	198.5	1660	5700
36.1	5380	10260	118.1	1390	6060	200.1	1710	5750
37.7	6290	11900	119.8	1260	5420			
39.4	7580	12820	121.7	1380	5380			
41.0	8230	15150	123.0	1270	5650			
42.7	8330	14180	124.7	1340	5750			
44.3	8440	14490	126.3	1350	5650			
45.9	8030	14810	128.0	1290	5560			
47.6	7090	12350	129.6	1200	5460			
49.2	5510	12120	131.2	1310	5560			
50.9	6940	12580	132.9	1420	5900			
52.5	5460	10580	134.5	1710	5950			
54.1	5460	8770	136.2	2080	6290			
55.8	5510	7840	137.8	2450	6230			
57.4	6170	9660	139.4	2470	5750			
59.1	6540	11700	141.1	1410	5380			
60.7	6800	12350	142.7	970	5290			
62.3	7490	12350	144.4	1060	5460			
64.0	6600	11490	146.0	1460	5650			
65.6	3970	10420	147.6	1370	5650			
67.6	4300	8330	149.3	1290	5600			
68.9	4600	10930	150.9	1340	5510			
70.5	5460	9800	152.6	1400	5600			
72.2	5050	9390	154.2	1460	5650			
73.8	5560	10260	155.8	1500	5650			
75.5	4830	10100	157.5	1470	5600			
77.1	3680	8440	159.1	1500	5600			
78.7	3750	8440	160.8	1690	5750			
80.7	4630	10260	162.4	1730	5800			
82.0	4900	8660	164.0	1670	5750			
83.7	3320	7840	165.7	1640	5750			
85.3	4250	7250	167.3	1610	5700			
86.9	3640	7750	169.0	1580	5650			
88.6	4420	8330	170.9	1580	5700			
90.2	3700	8230	172.2	1580	5700			
91.9	3990	7660	173.9	1610	5750			
93.5	5560	9800	175.5	1620	5700			
95.1	4570	8030	177.2	1590	5650			
96.8	3020	7090	178.8	1540	5650			
98.4	3130	7090	180.5	1530	5600			
100.1	3920	7750	182.1	1530	5600			
101.7	4690	8230	183.7	1560	5650			
103.4	4420	8330	185.4	1600	5700			
105.0	4500	8440	187.3	1540	5650			
106.6	4300	8230	188.7	1510	5600			

Table 10. Boring B-620 (DH), Suspension R1-R2 depths and P- and S_H-wave velocities