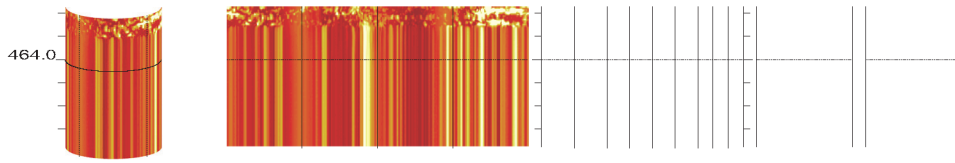


R-6-1b

463.768 to 456.400ft





BHTV DATA PROCESSING
 RGLDIP vsn 6.2
 INTERPRETED BHTV DIPS LOG

RIZZO

Borehole: R-7-1

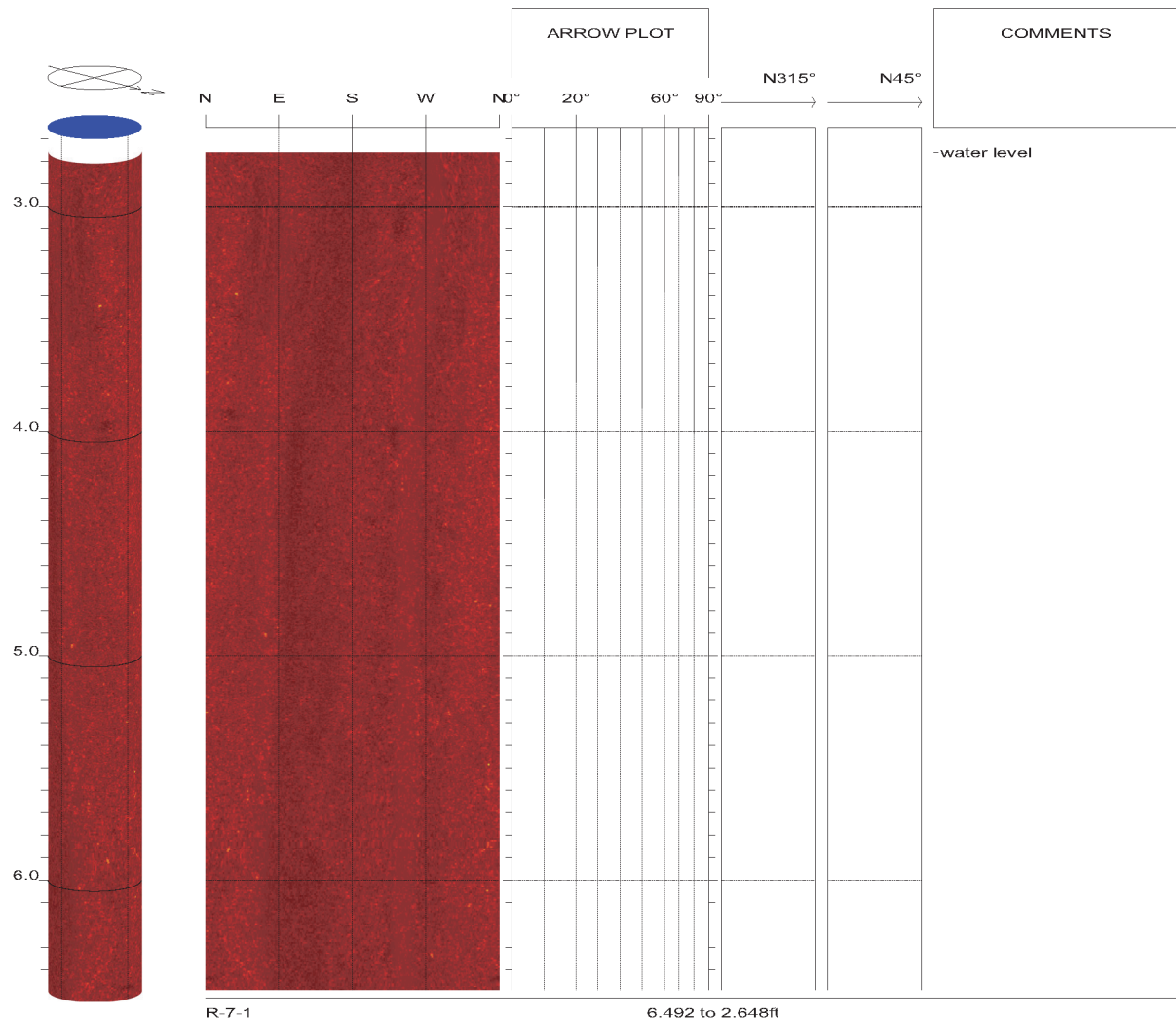
TURKEY POINT

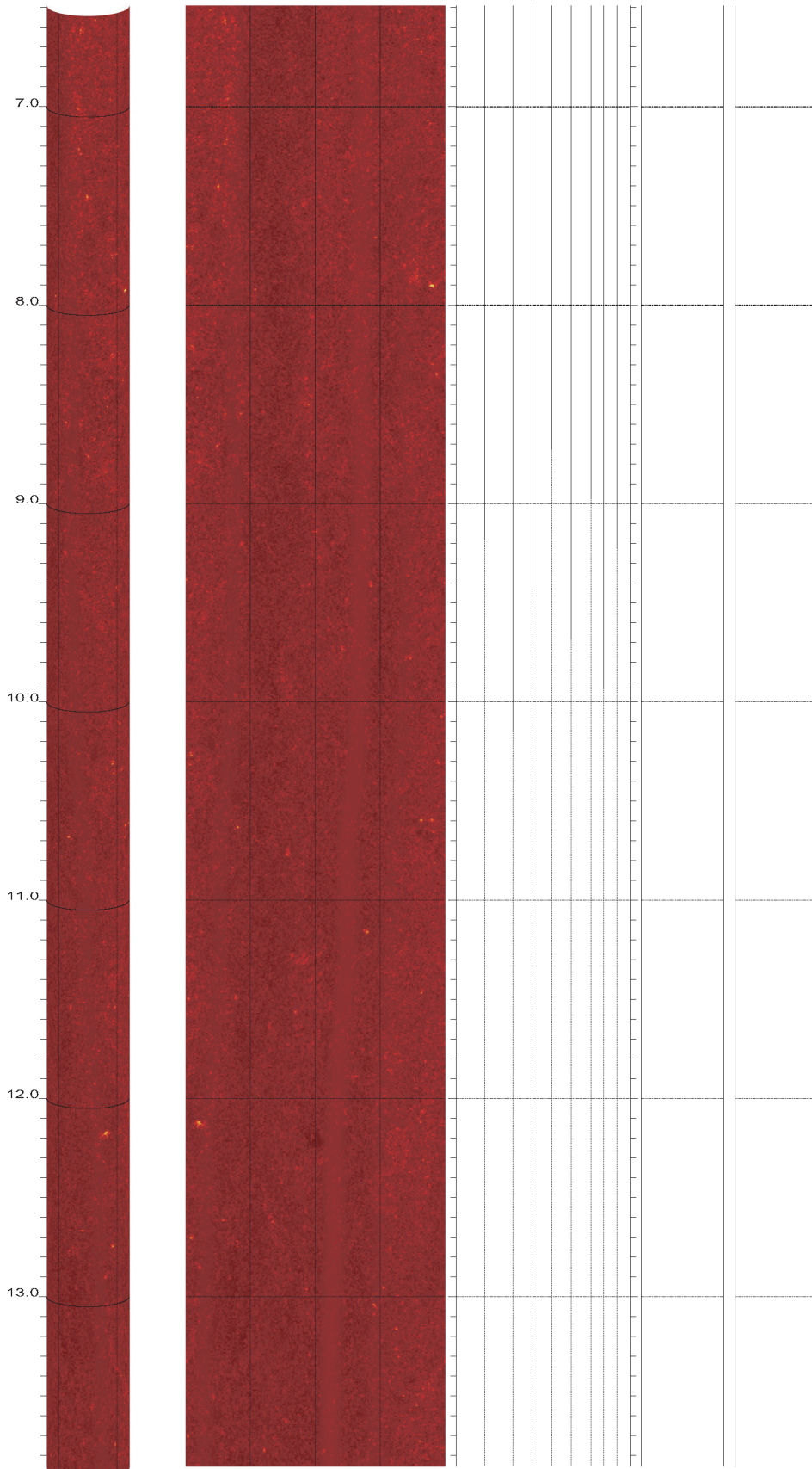
top of borehole.....
 East: _
 North: _
 Elev: _

North ref. is true
 Depth units are feet
 Vertical scale: 1/10
 Horiz scale = 1.00x Vert scale

Zone from 454.104 to 2.648ft
 Format: BHTV-NESWN

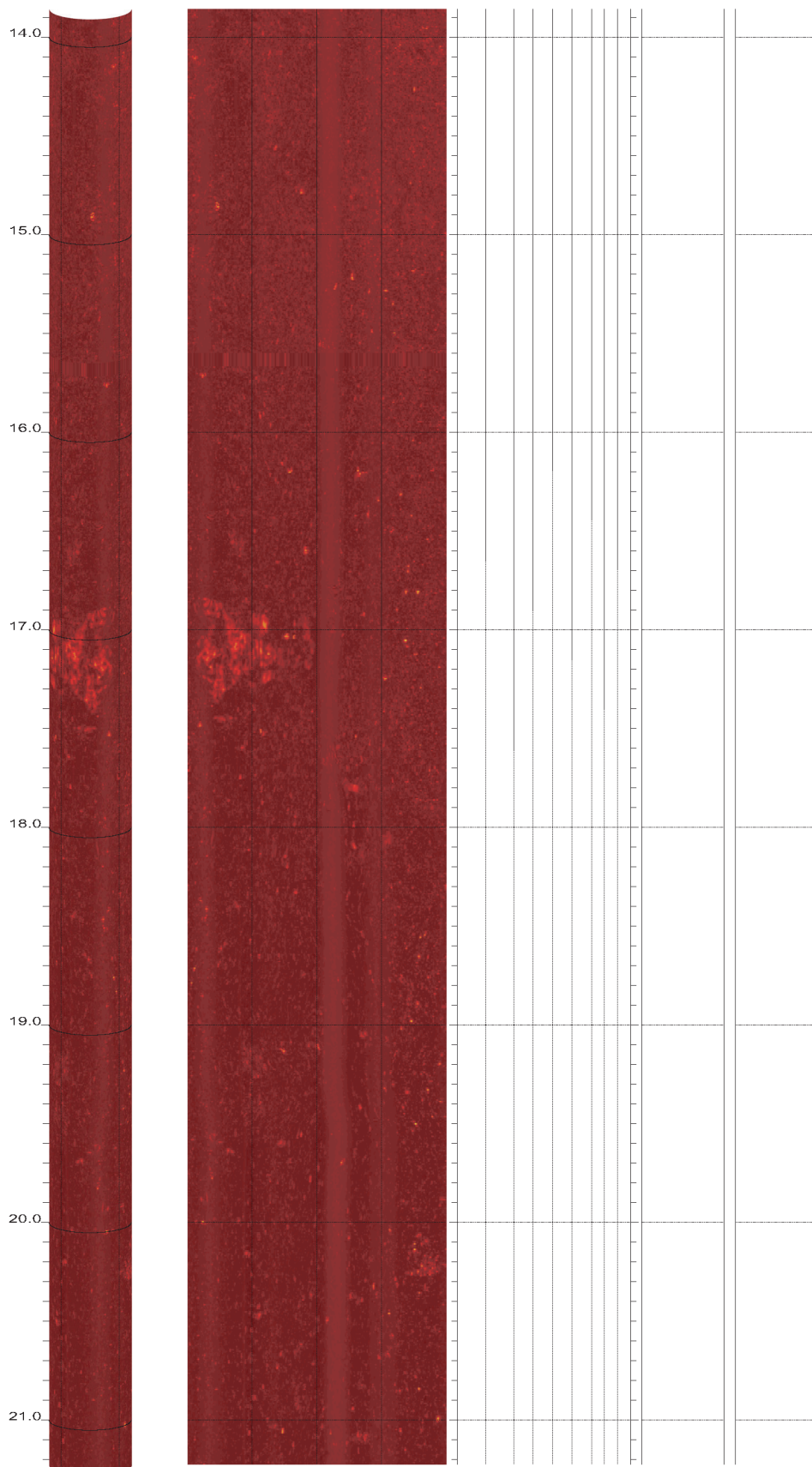
Borehole diam: 5.000inch
 Vertical = borehole-axis
 Image: Amplitude





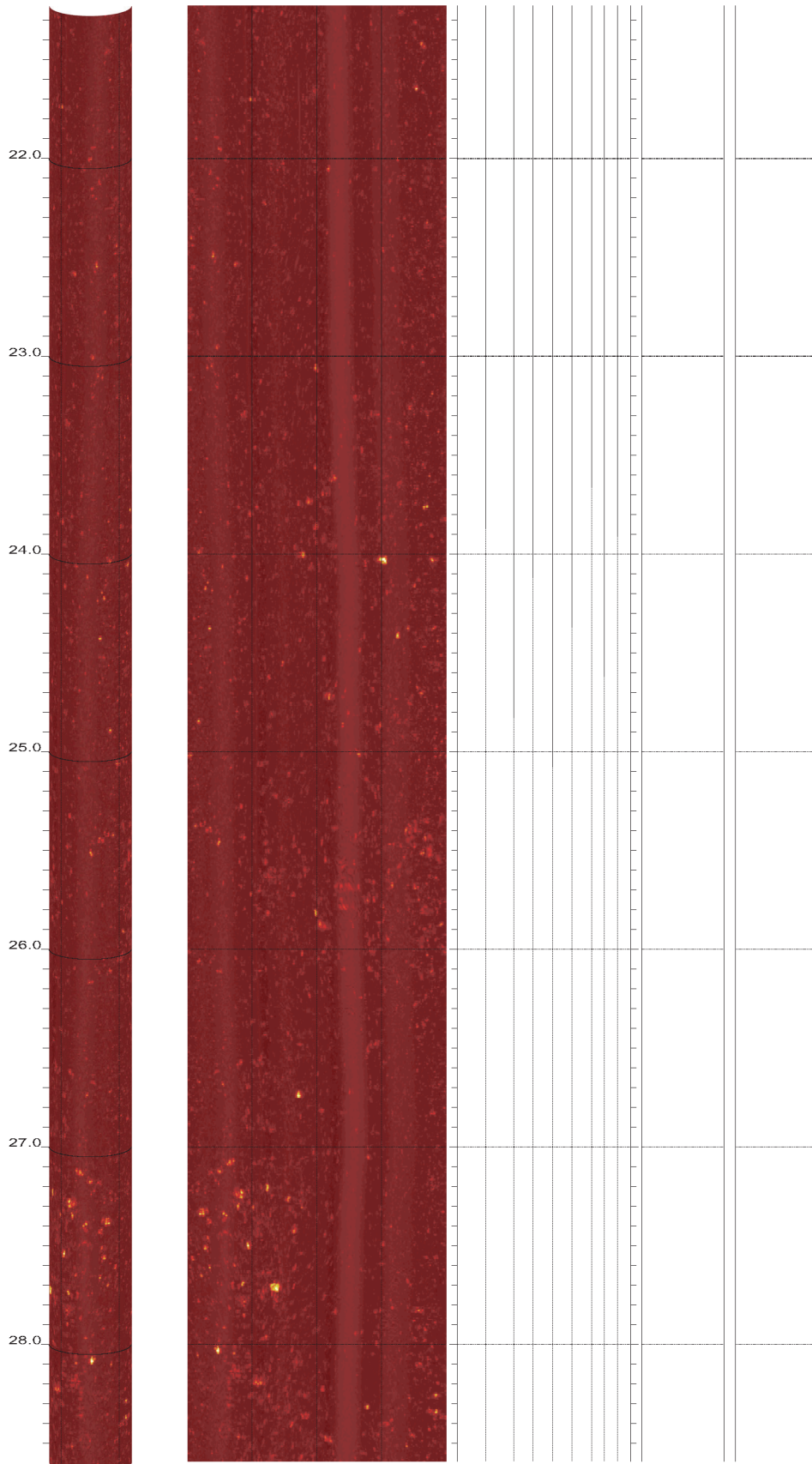
R-7-1

13.860 to 6.492ft



R-7-1

21.228 to 13.860ft



R-7-1

28.596 to 21.228ft

