

**APPENDIX C**

**ACOUSTIC TELEVIEWER FEATURES LOGS**



BHTV DATA PROCESSING  
 RGLDIP vsn 6.2  
 INTERPRETED BHTV DIPS LOG

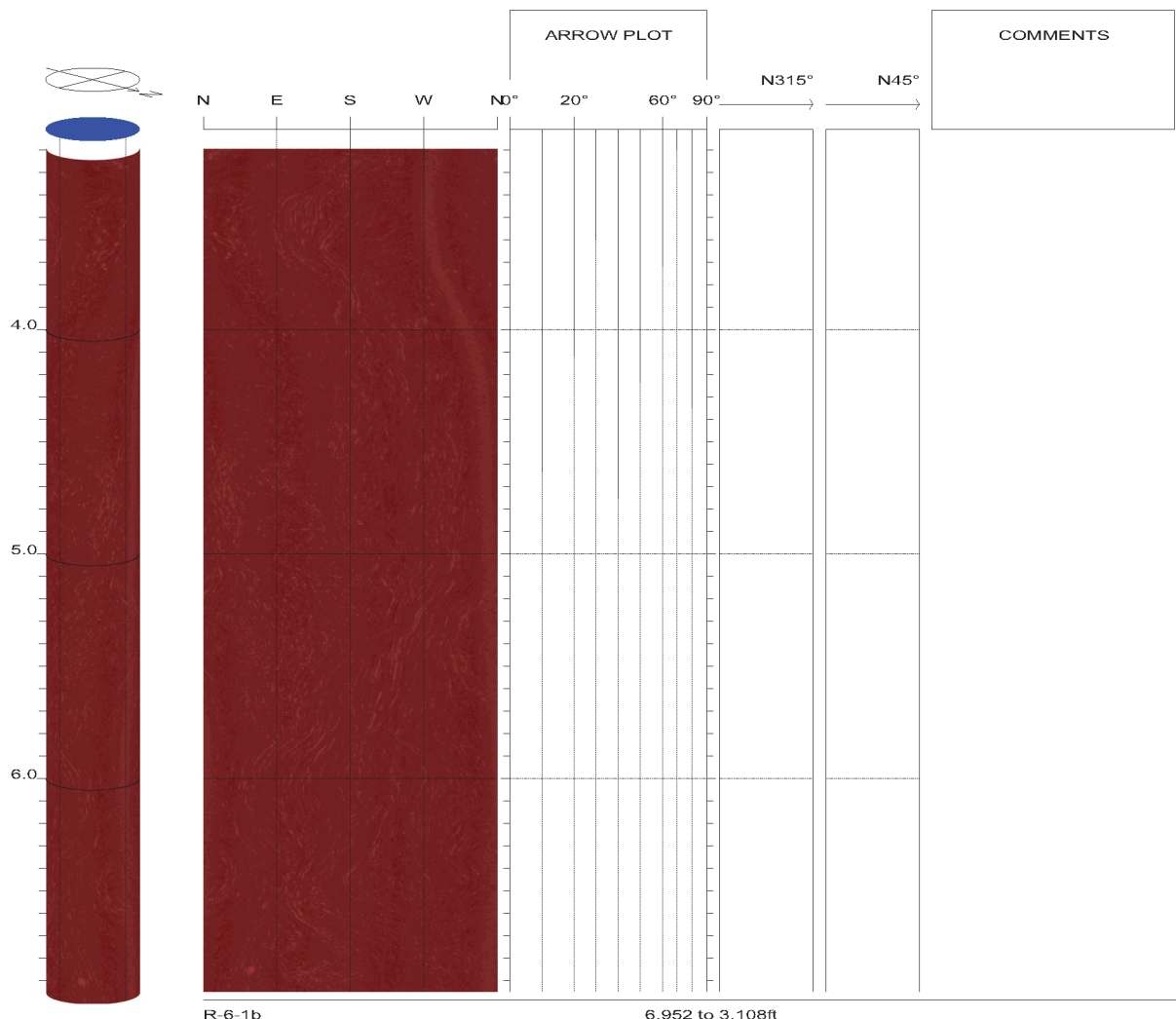
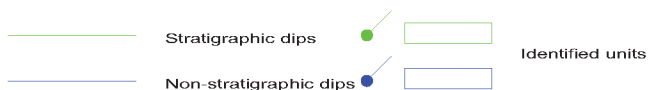
RIZZO  
 Borehole: R-6-1b  
 TURKEY POINT

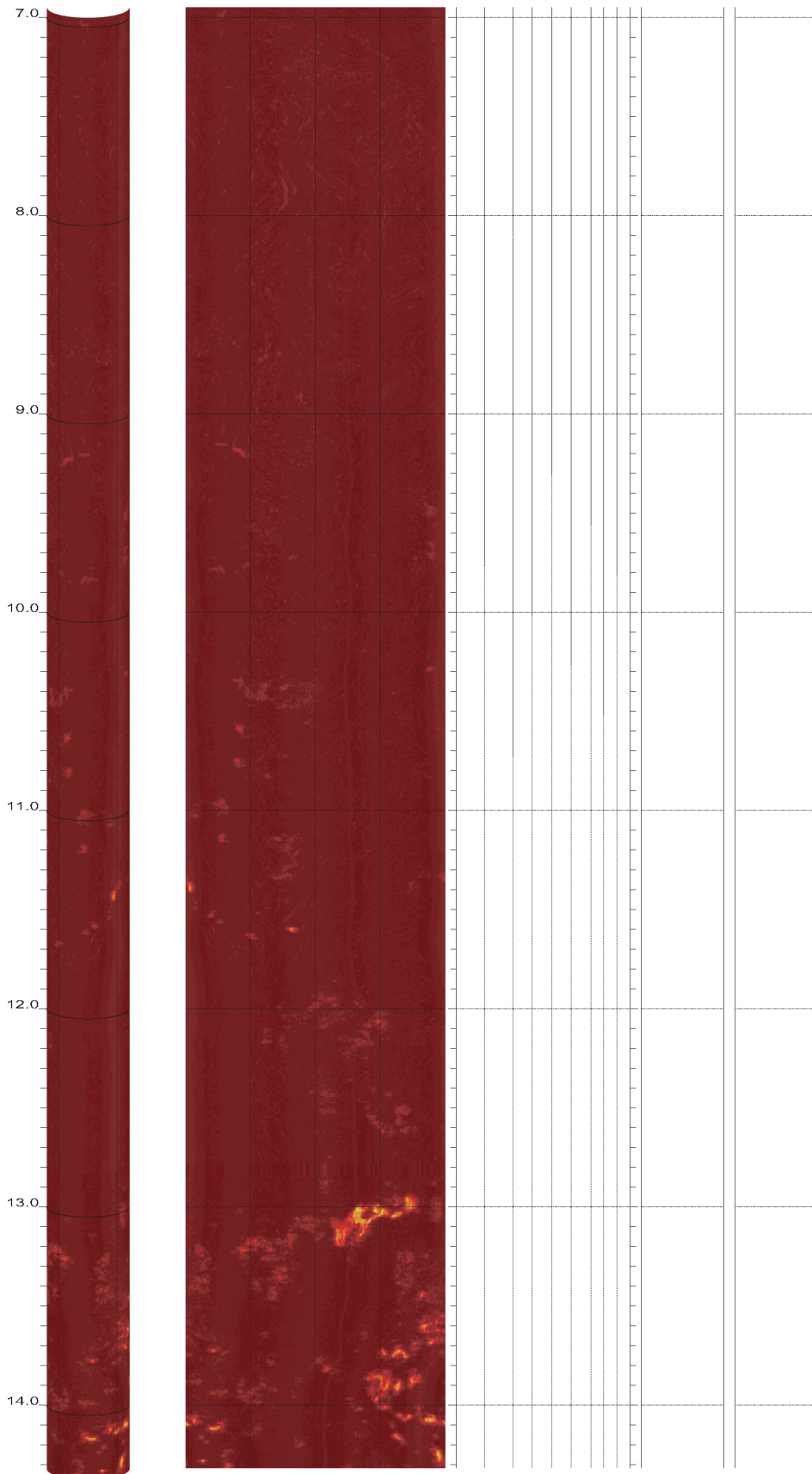
top of borehole.....  
 East: \_  
 North: \_  
 Elev: \_

North ref. is true  
 Depth units are feet  
 Vertical scale: 1/10  
 Horiz scale = 1.00x Vert scale

Zone from 464.376 to 3.108ft  
 Format: BHTV-NESWN

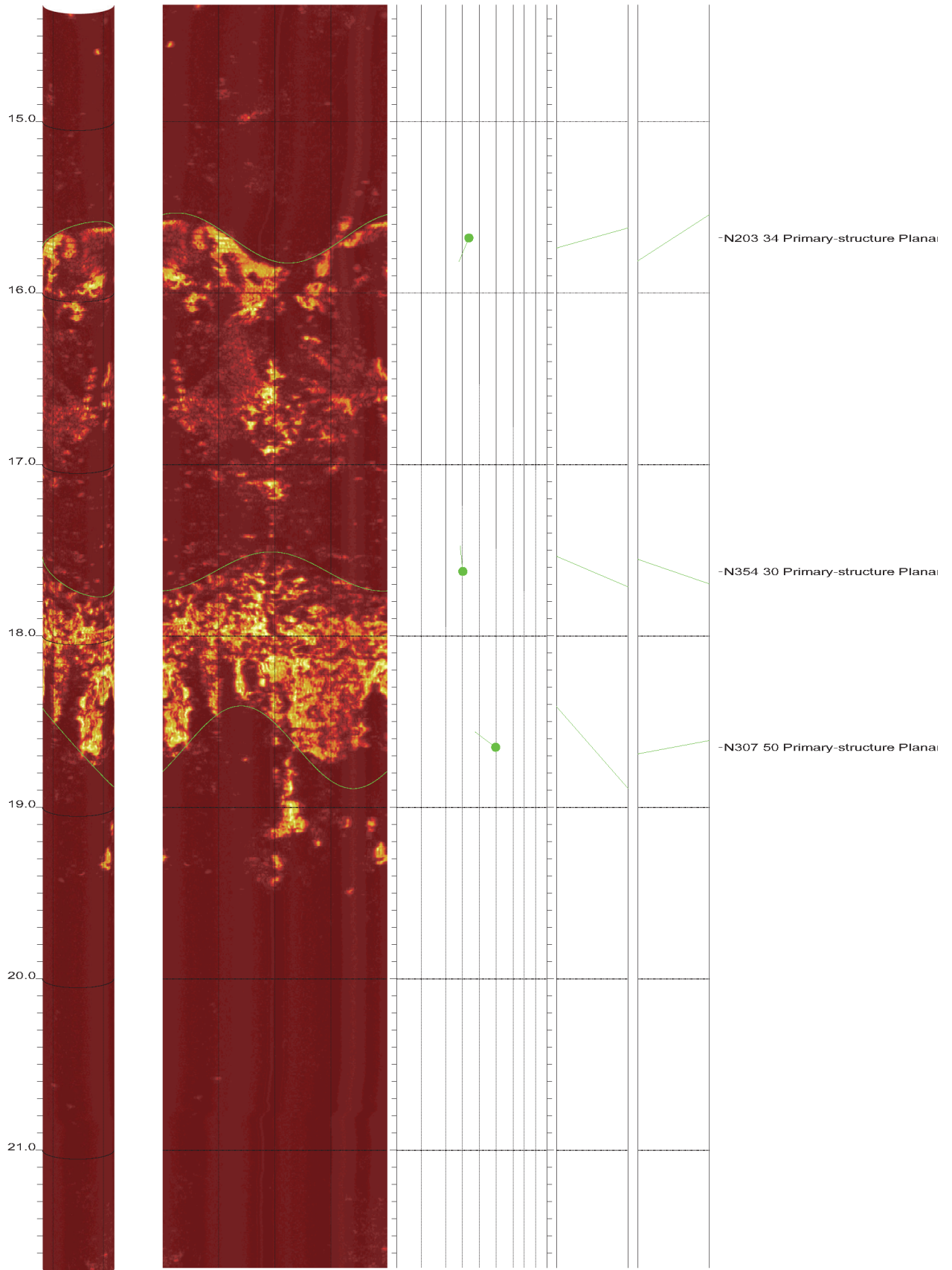
Borehole diam: 5.000inch  
 Vertical = borehole-axis  
 Image: Amplitude

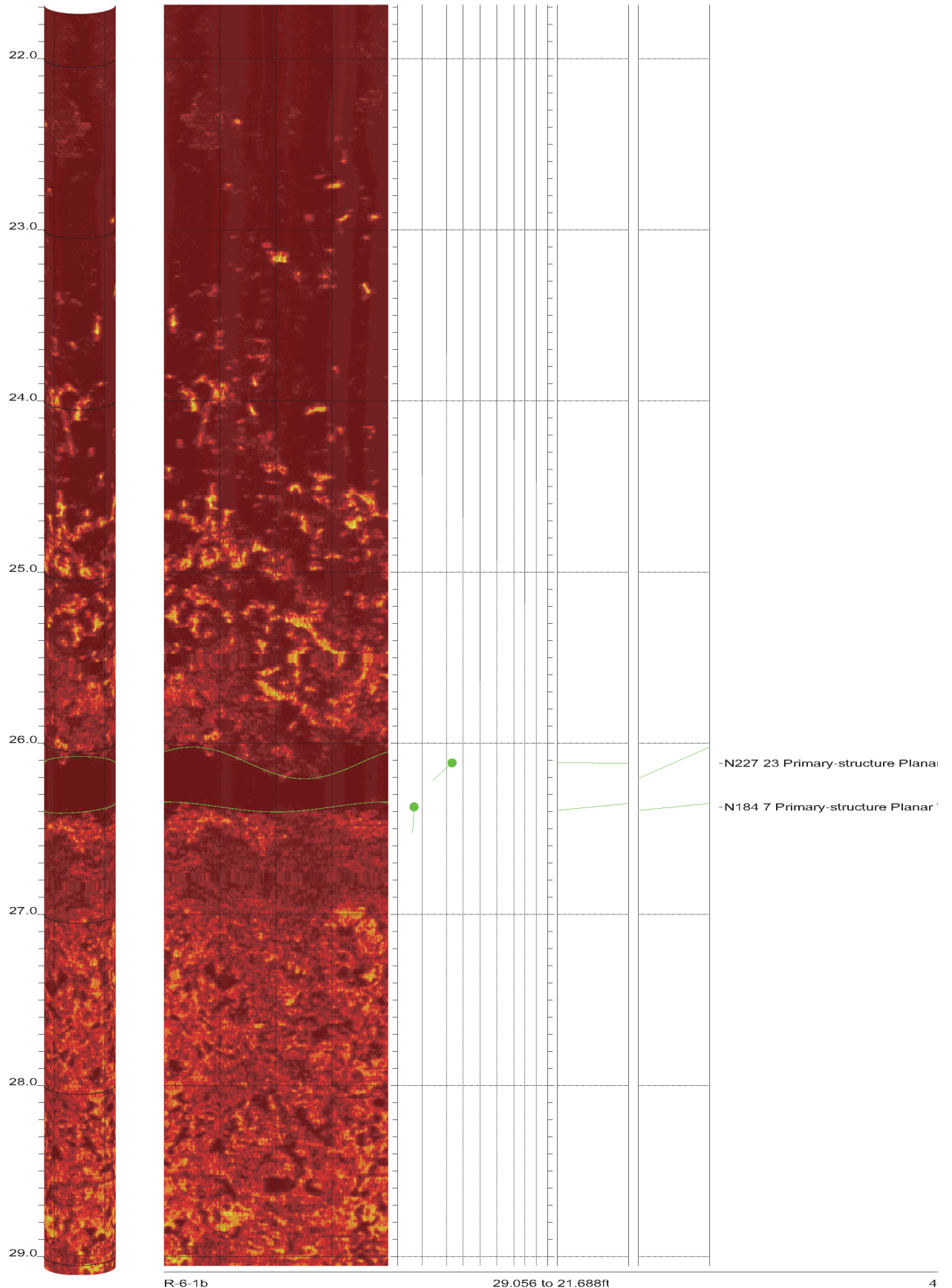


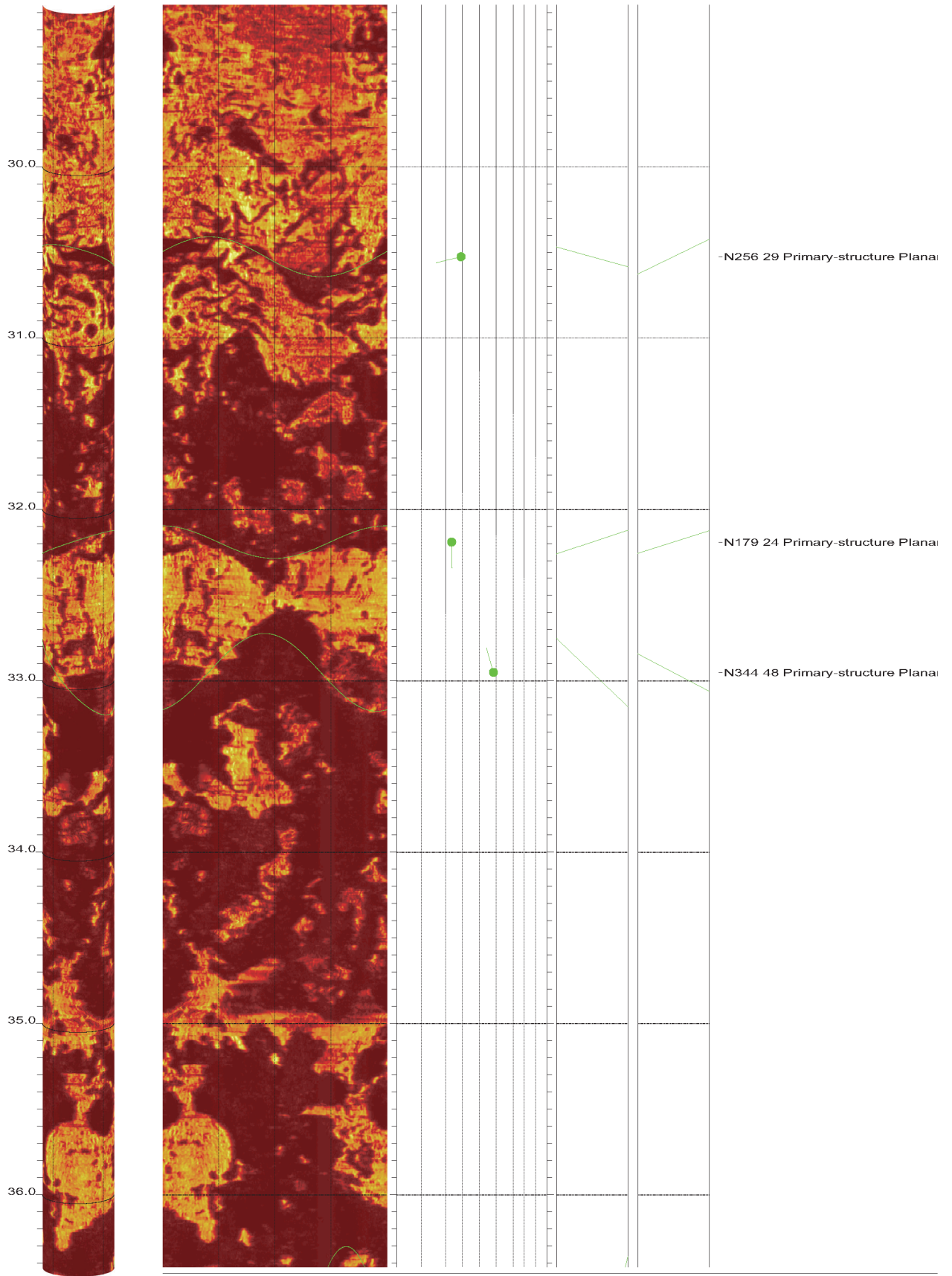


R-6-1b

14.320 to 6.952ft

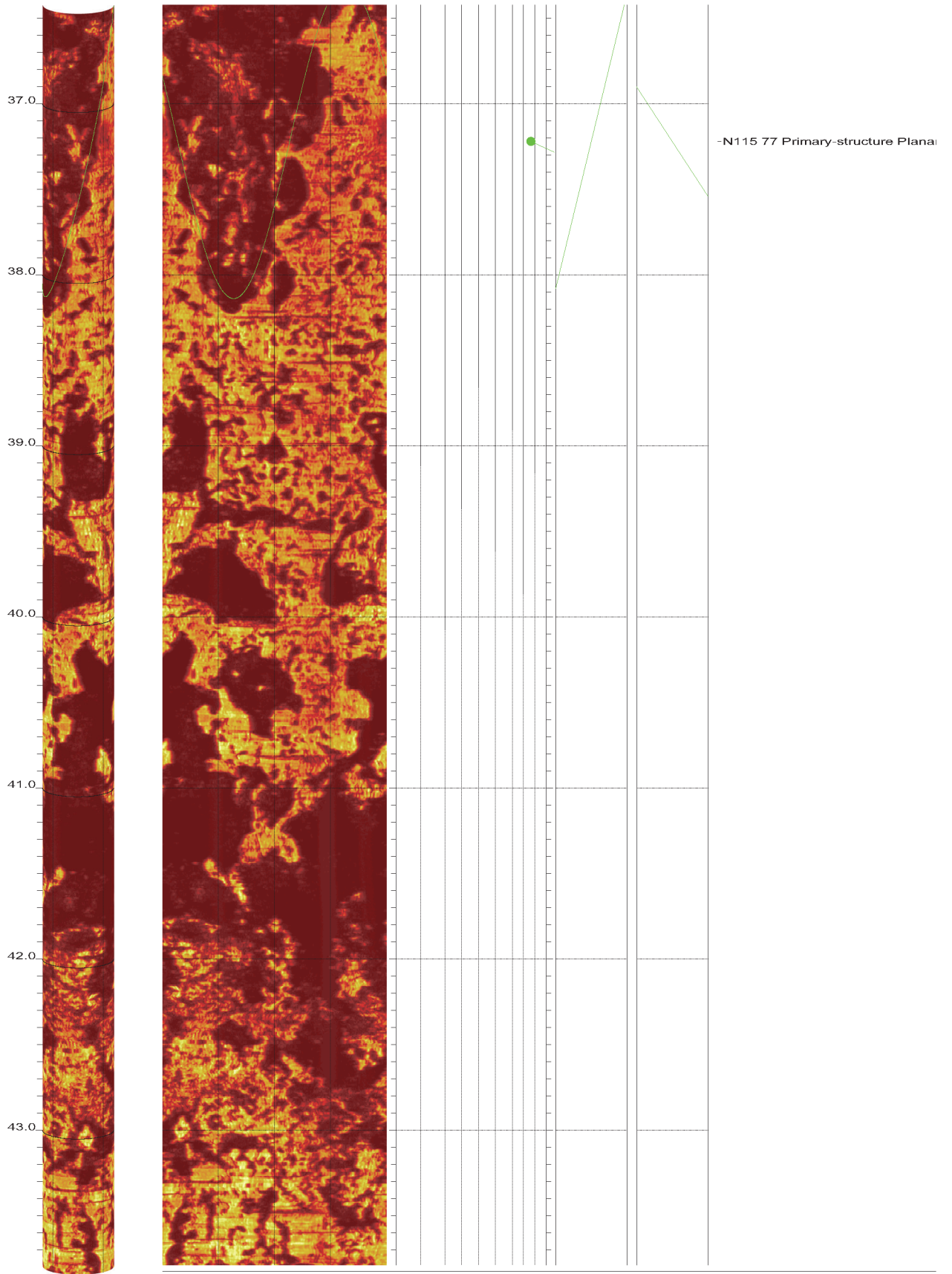






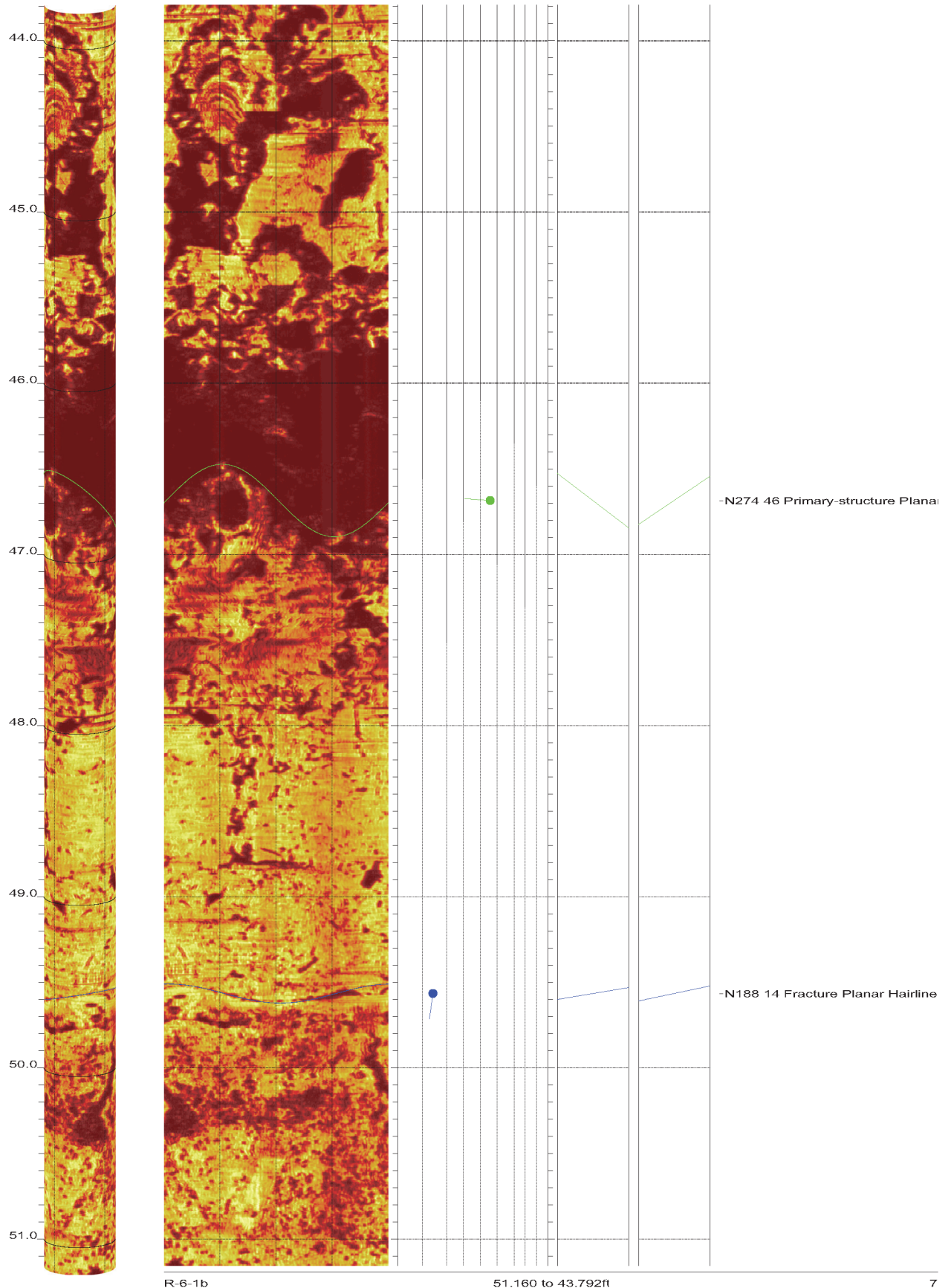
R-6-1b

36.424 to 29.056ft

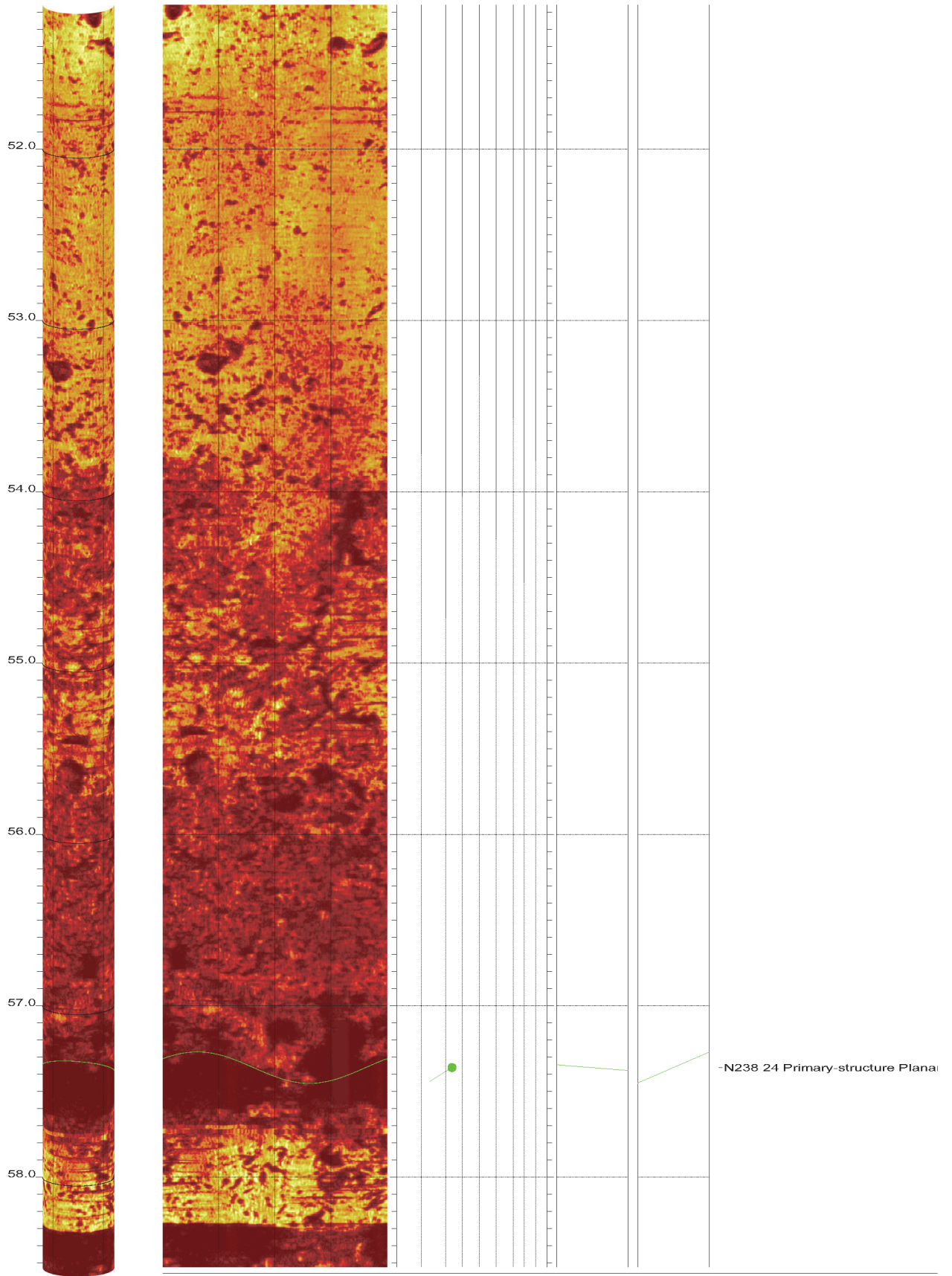


R-6-1b

43.792 to 36.424ft







R-6-1b

58.528 to 51.160ft

