



BHTV DATA PROCESSING  
 RGLDIP vsn 6.2  
 ACOUSTIC CALIPER LOG

RIZZO

Borehole: R-7-1

TURKEY POINT

top of borehole.....

East: \_  
 North: \_  
 Elev: \_

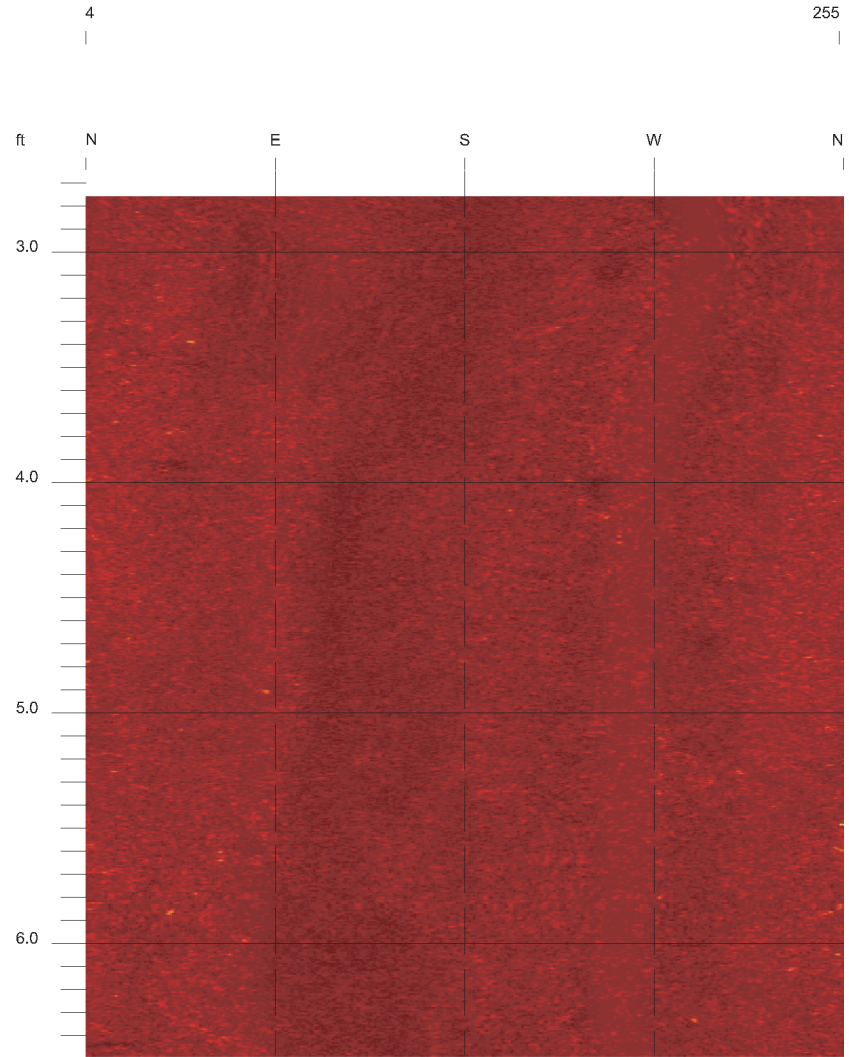
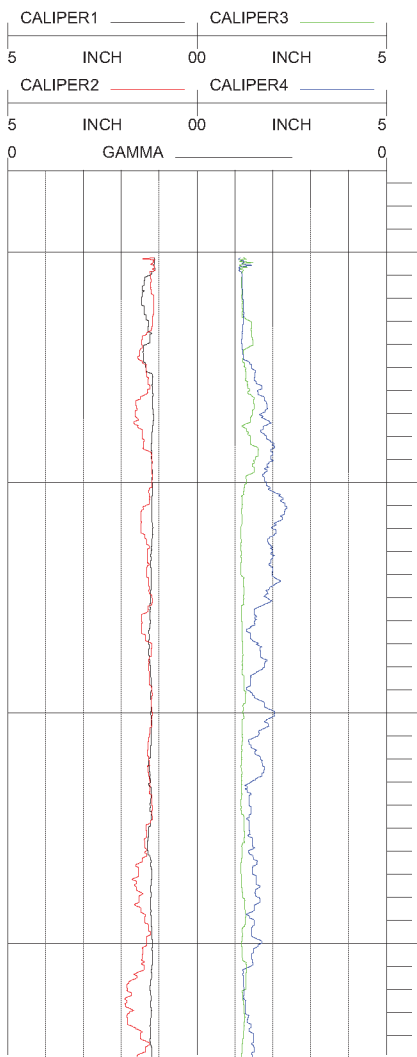
North ref. is true  
 Depth units are feet  
 Vertical scale: 1/10

Zone from 454.104 to 2.648ft

Borehole diam: 5.000inch  
 Vertical = borehole-axis  
 Image: Amplitude

Depth interval 0.004ft, Filter length 0.124ft

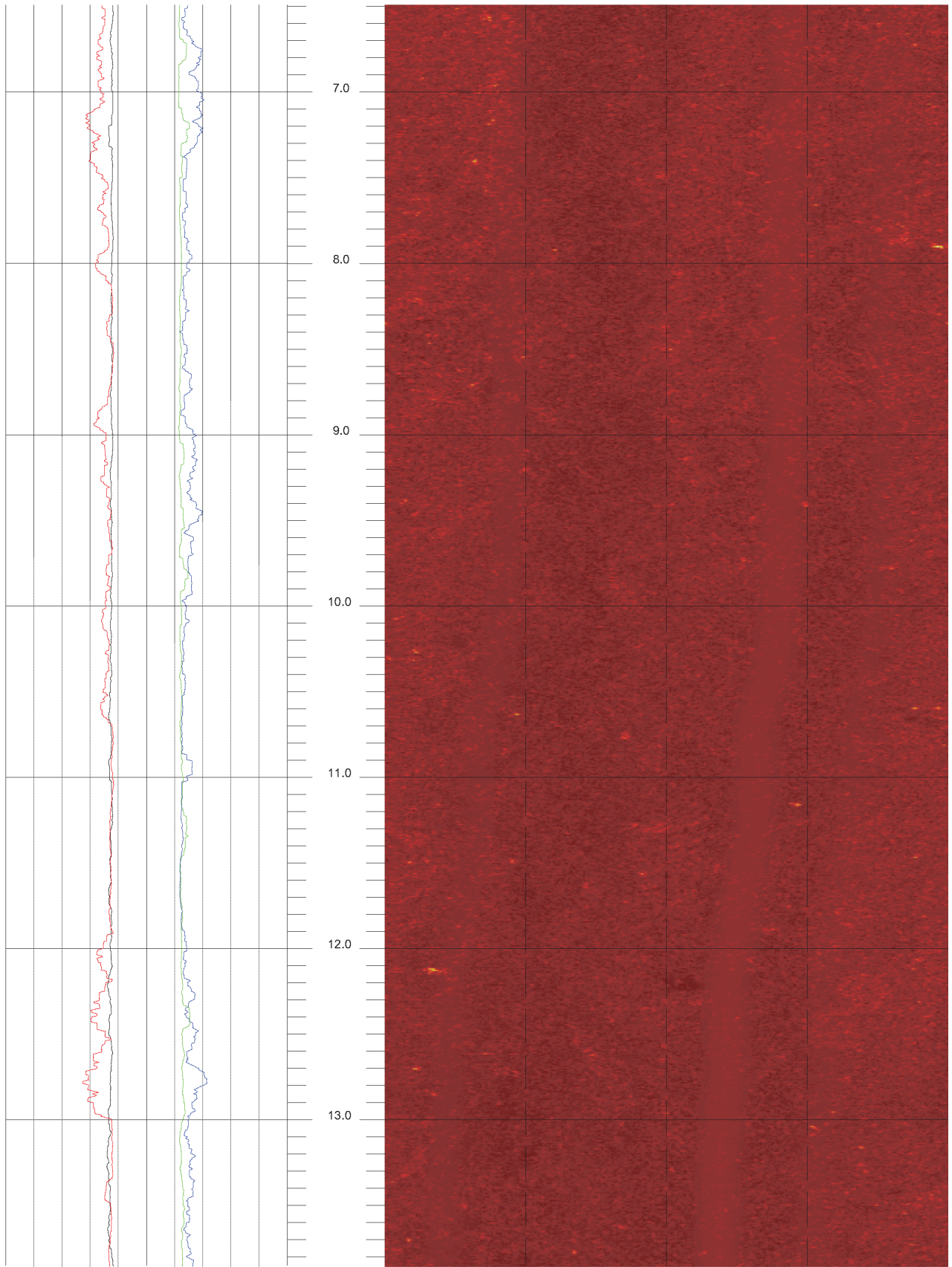
REFLECTANCE



R-7-1

6.492 to 2.648ft

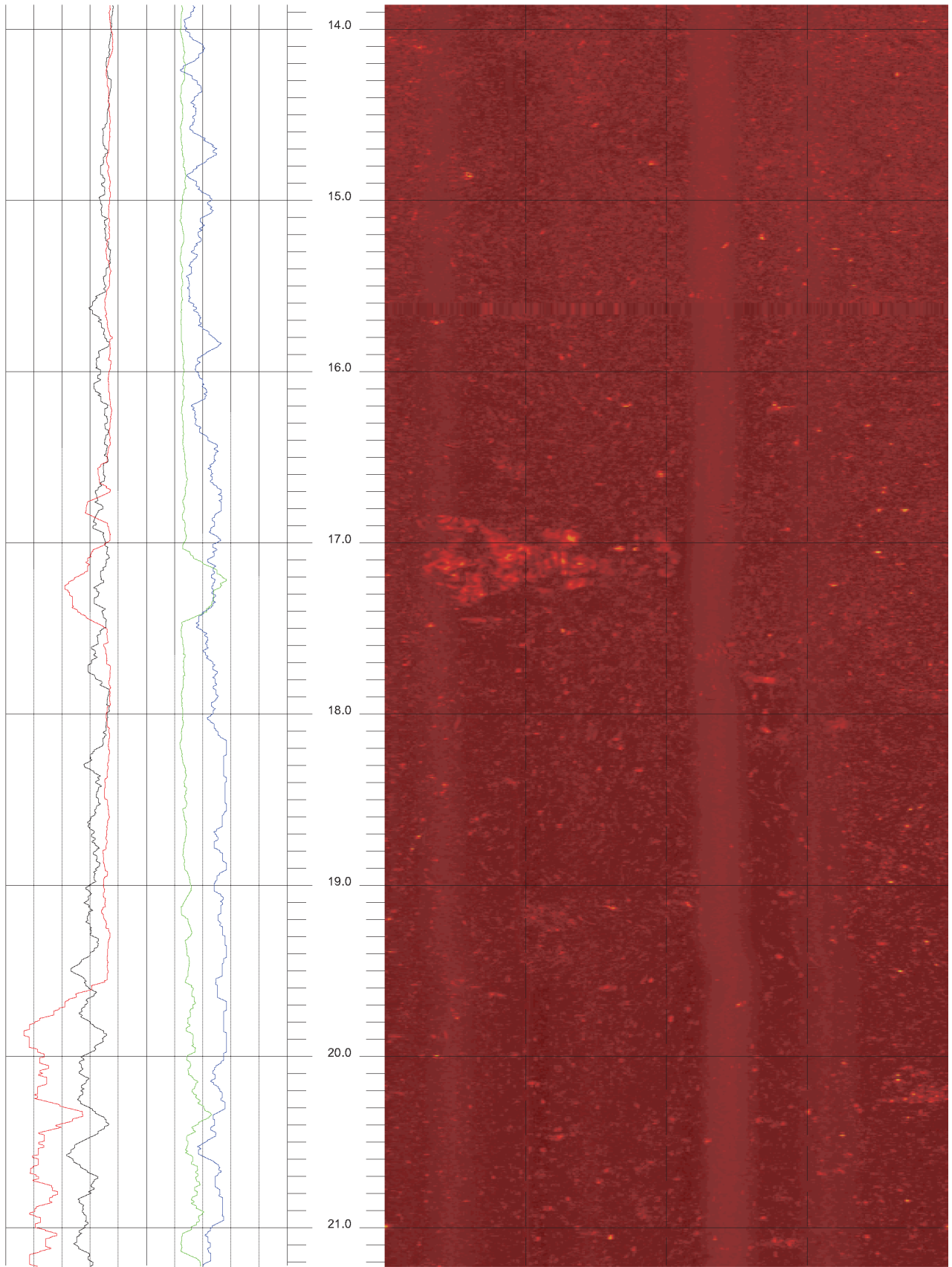
1



R-7-1

13.860 to 6.492ft

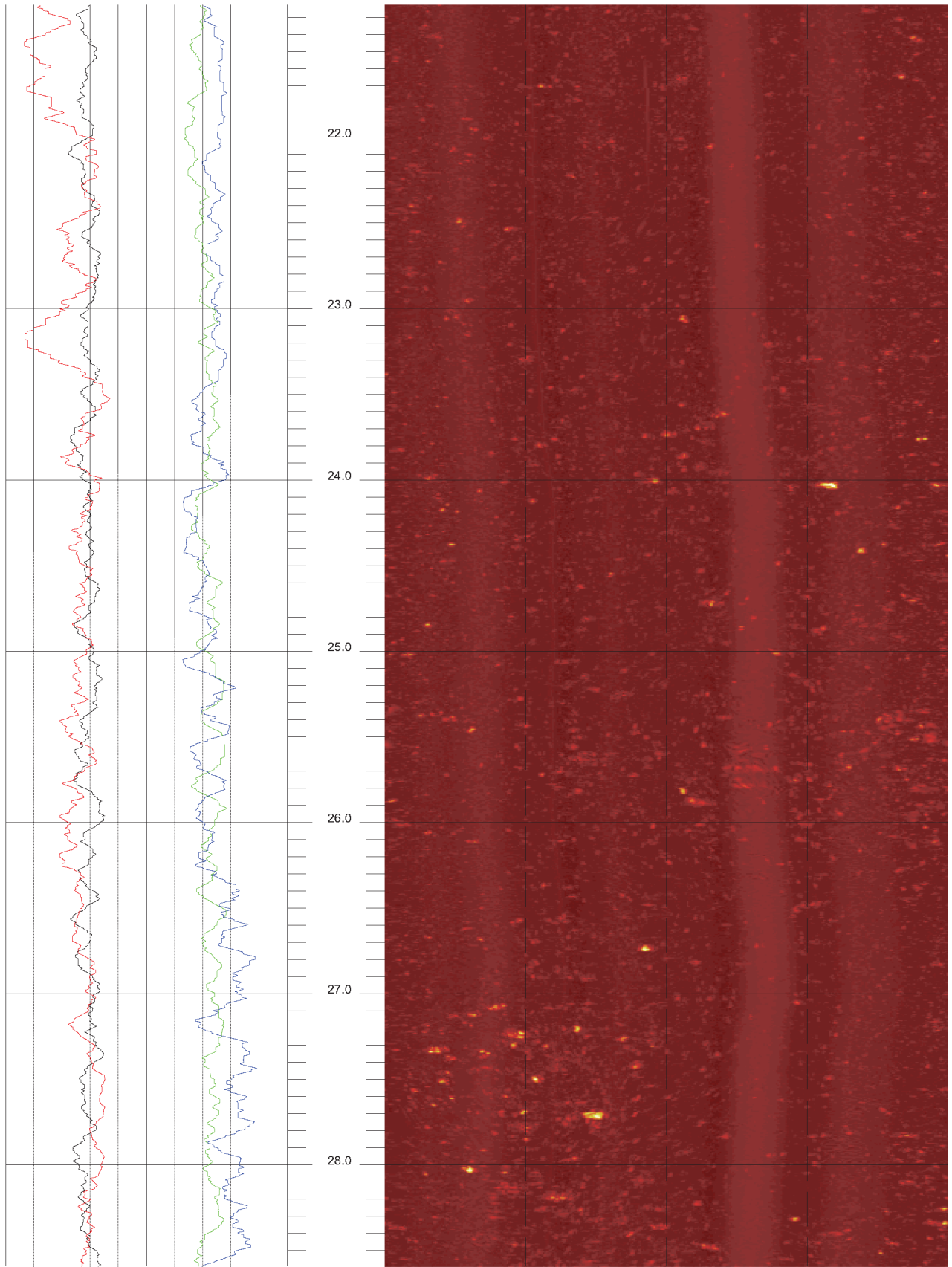
2



R-7-1

21.228 to 13.860ft

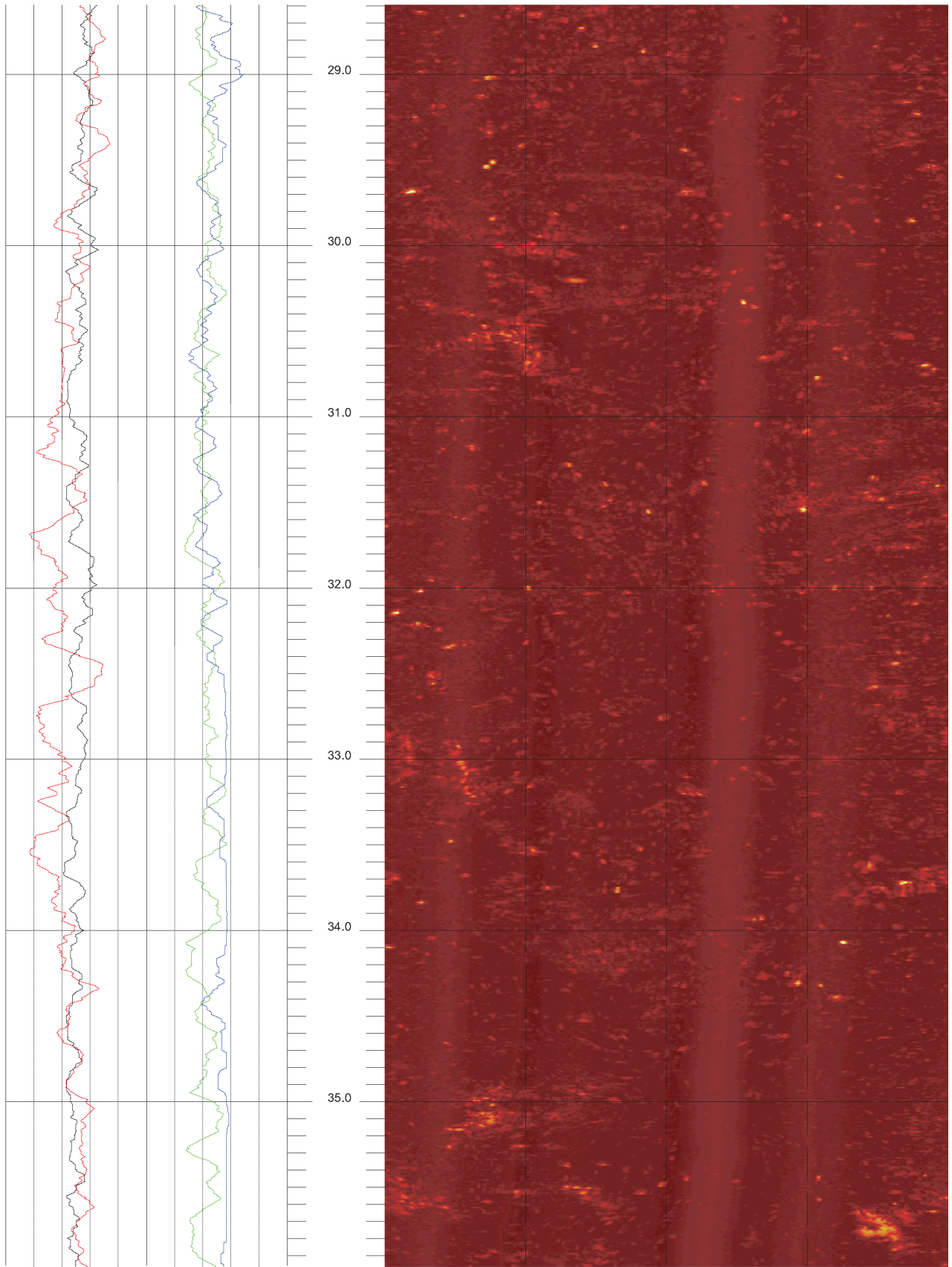
3



R-7-1

28.596 to 21.228ft

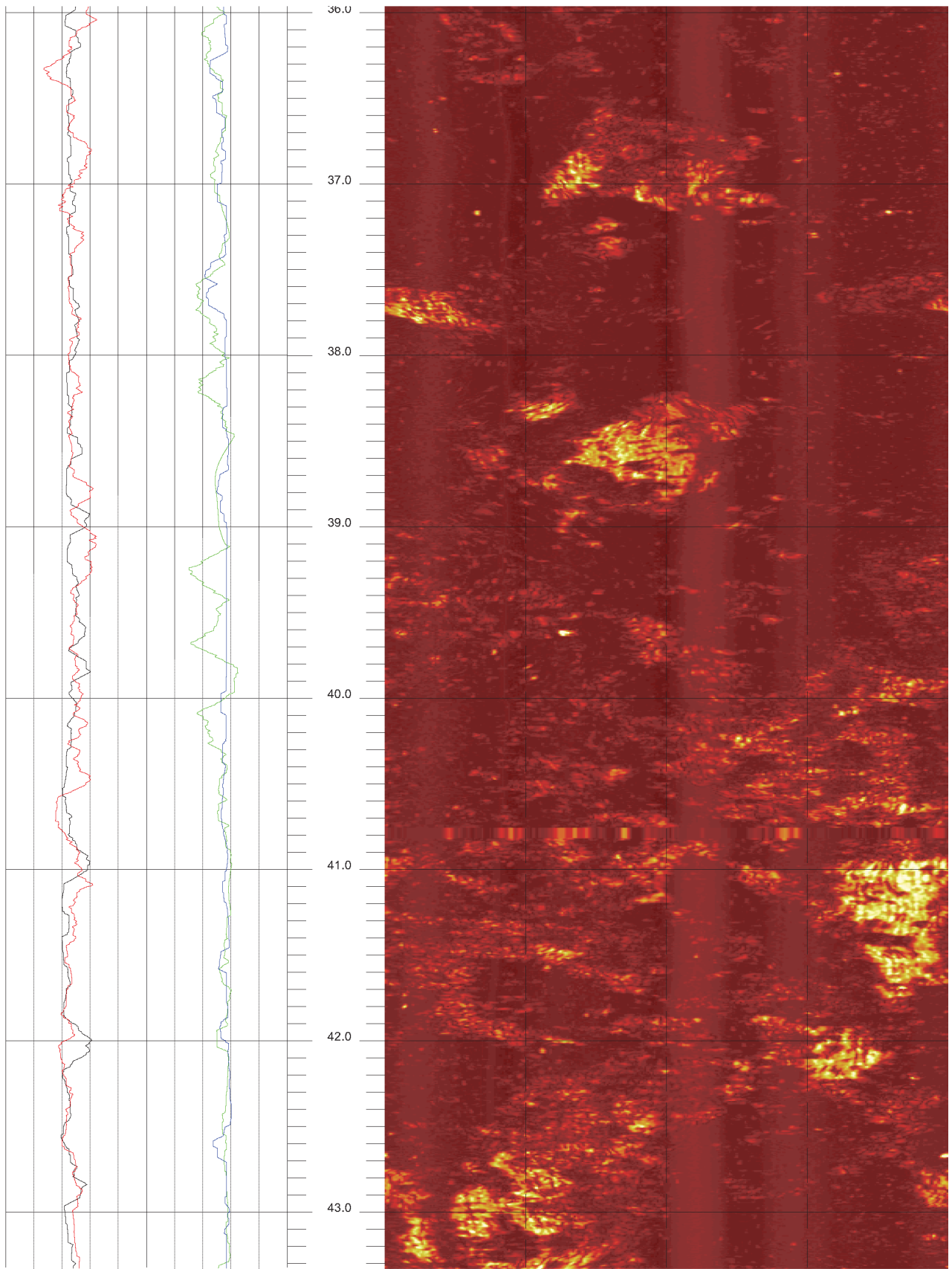
4



R-7-1

35.964 to 28.596ft

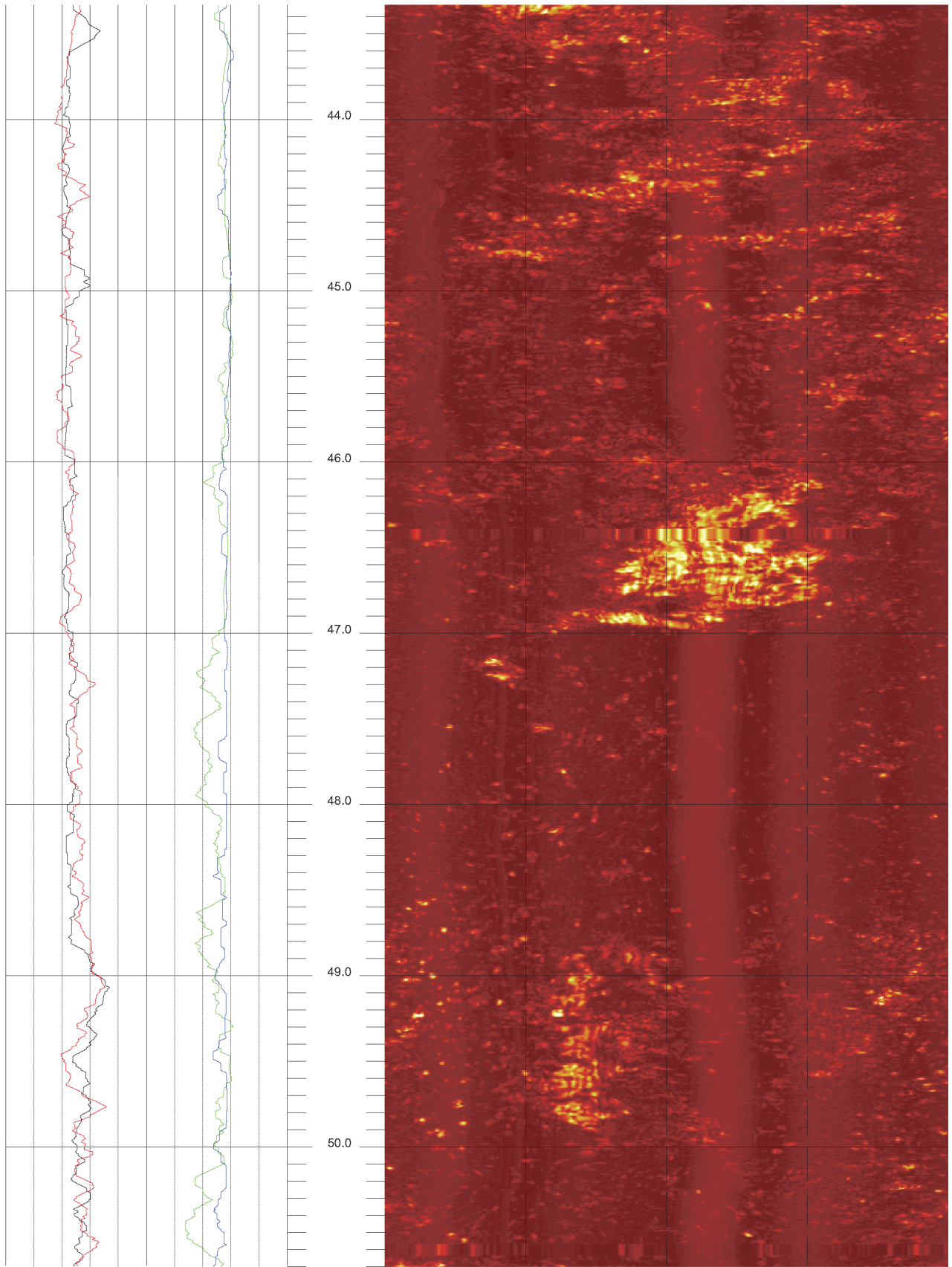
5



R-7-1

43.332 to 35.964ft

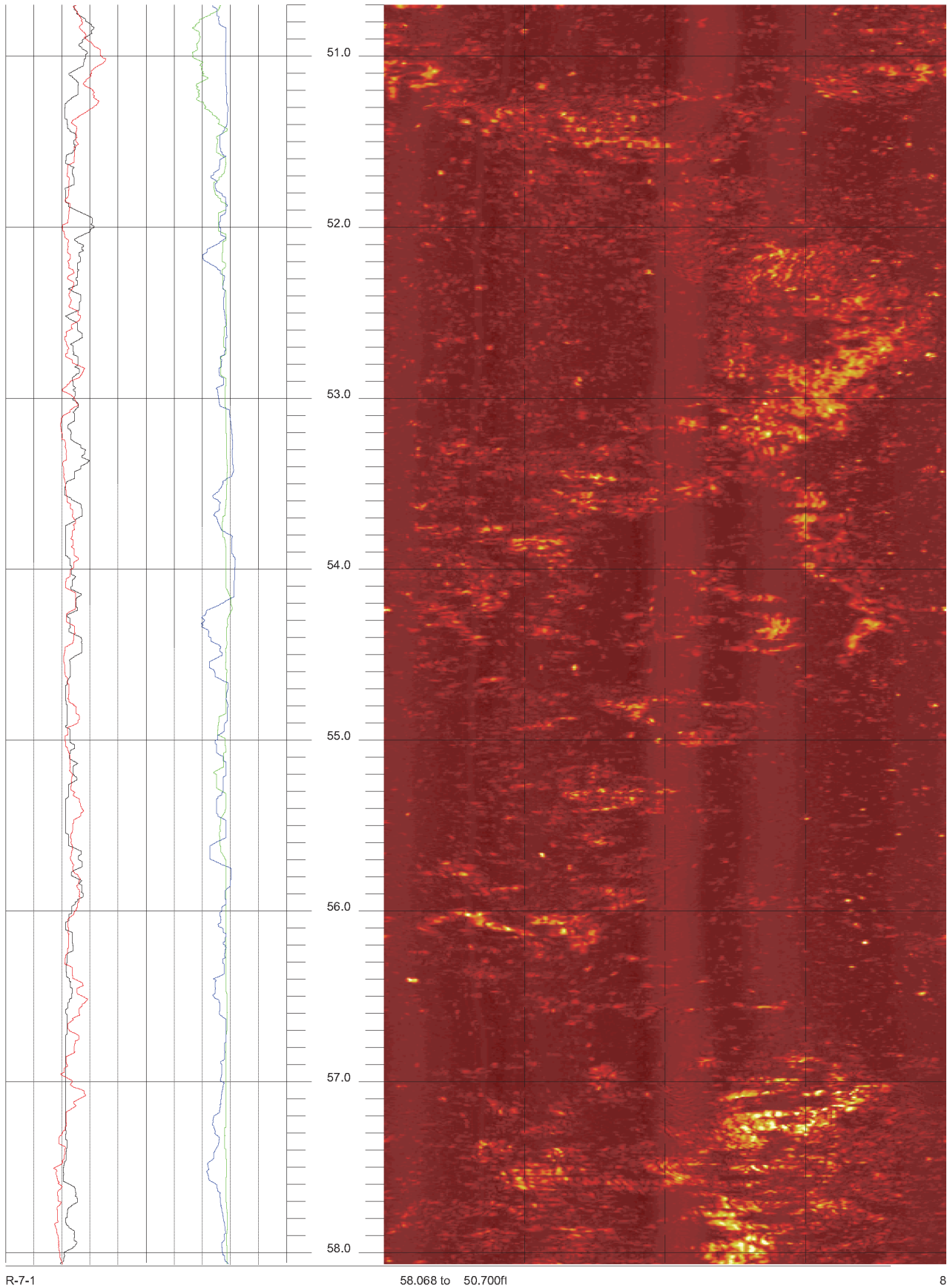
6



R-7-1

50.700 to 43.332ft

7

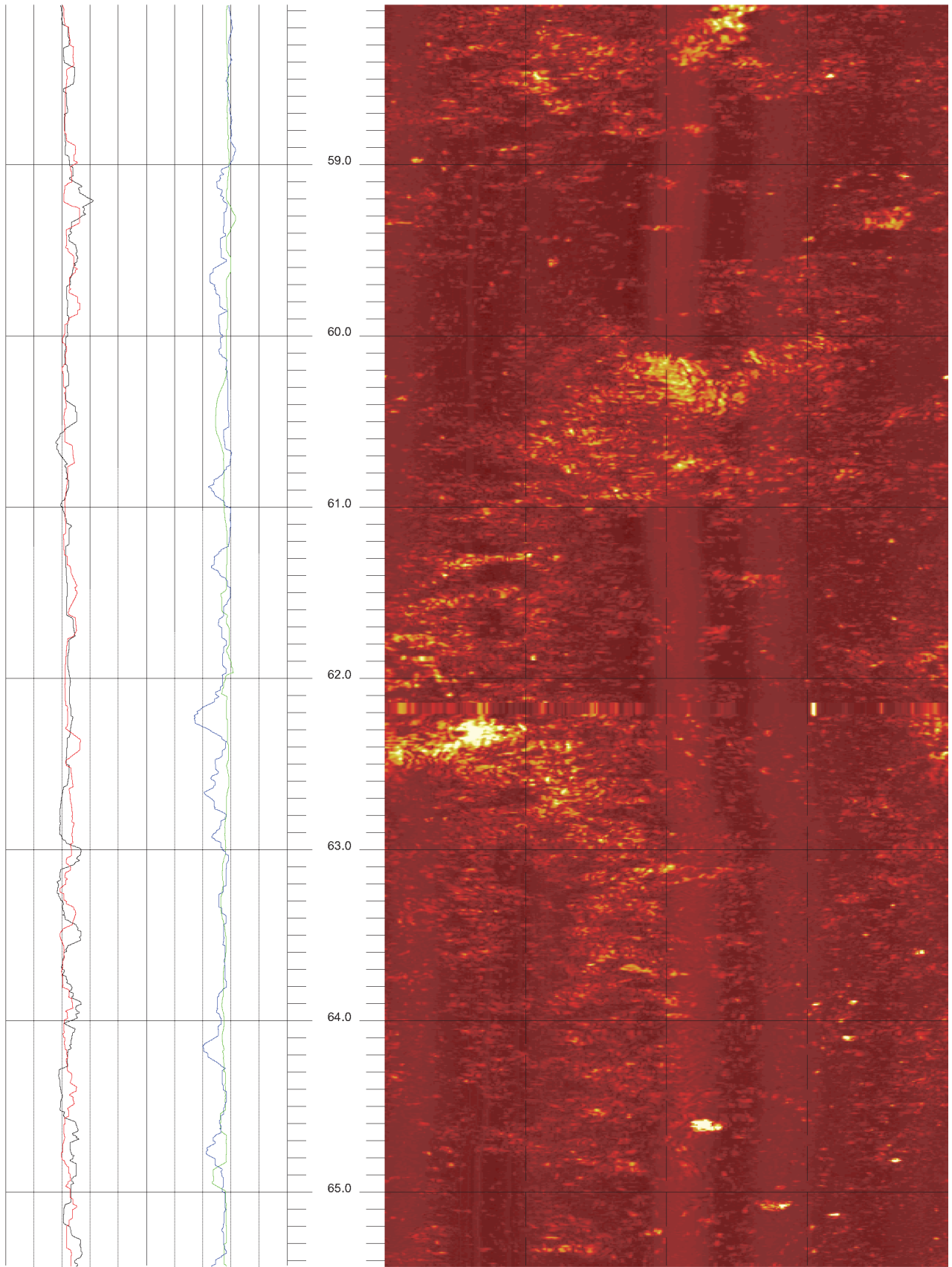


R-7-1

58.068 to 50.700ft

8

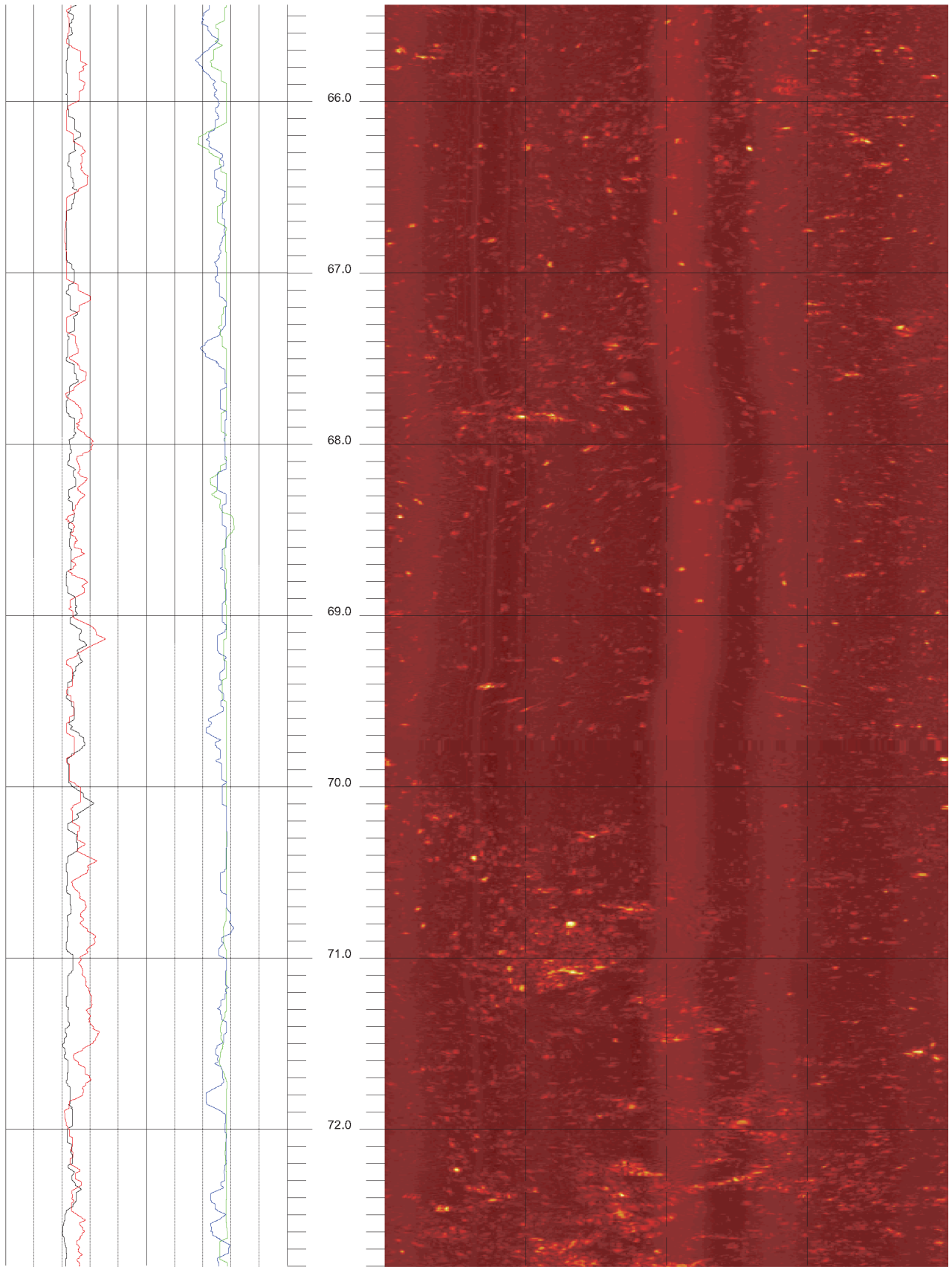




R-7-1

65.436 to 58.068ft

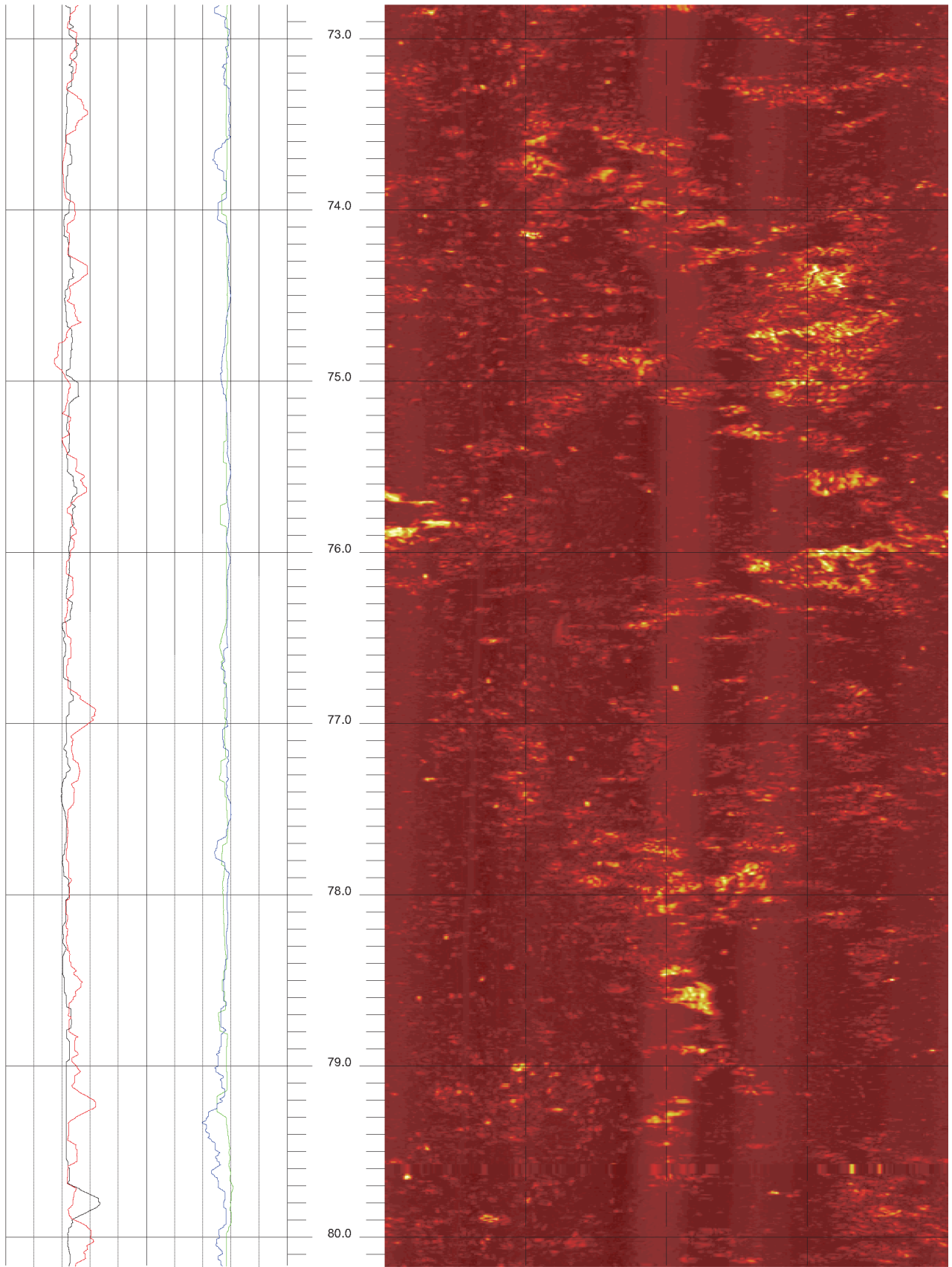
9



R-7-1

72.804 to 65.436ft

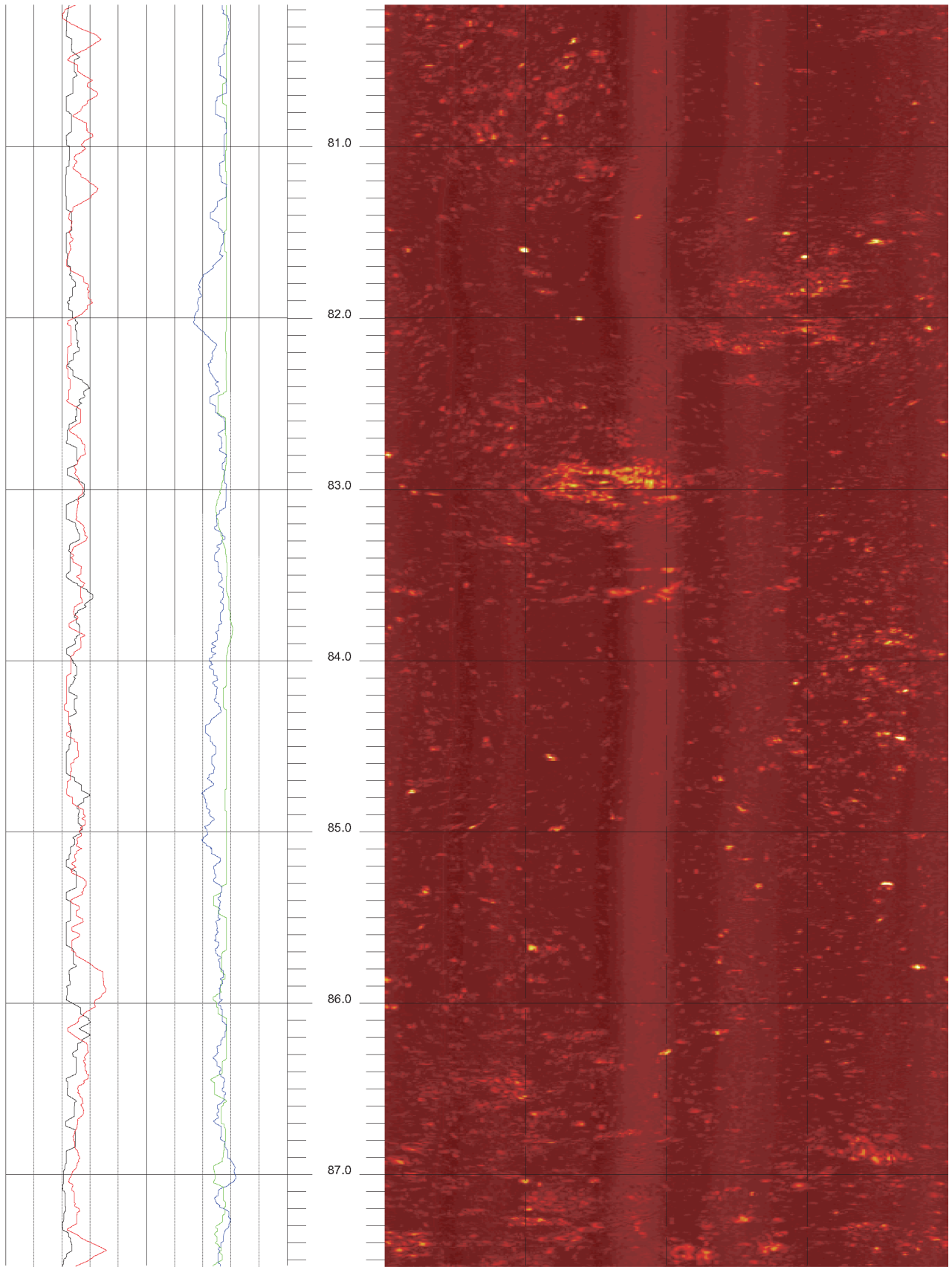
10



R-7-1

80.172 to 72.804ft

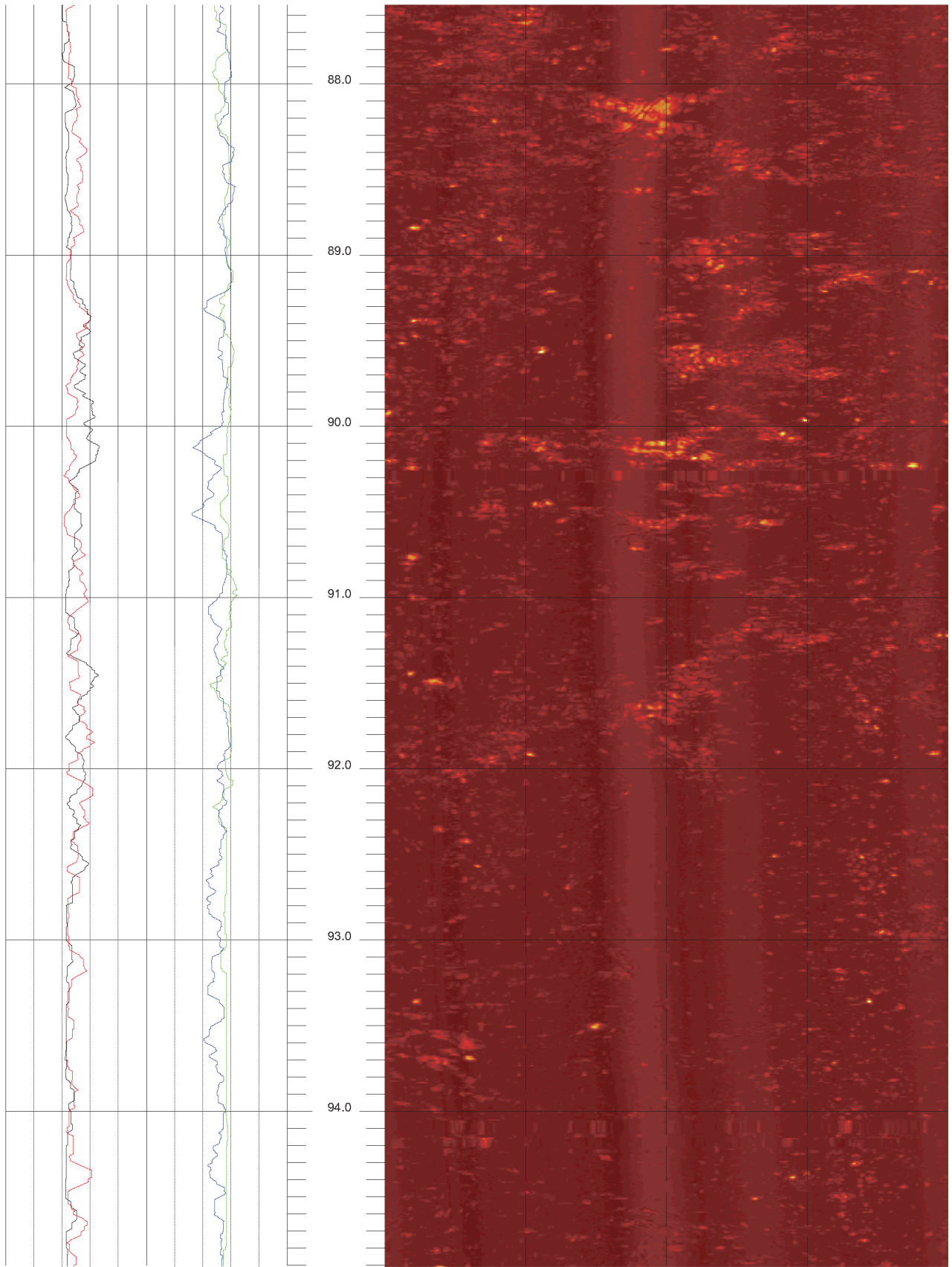
11



R-7-1

87.540 to 80.172ft

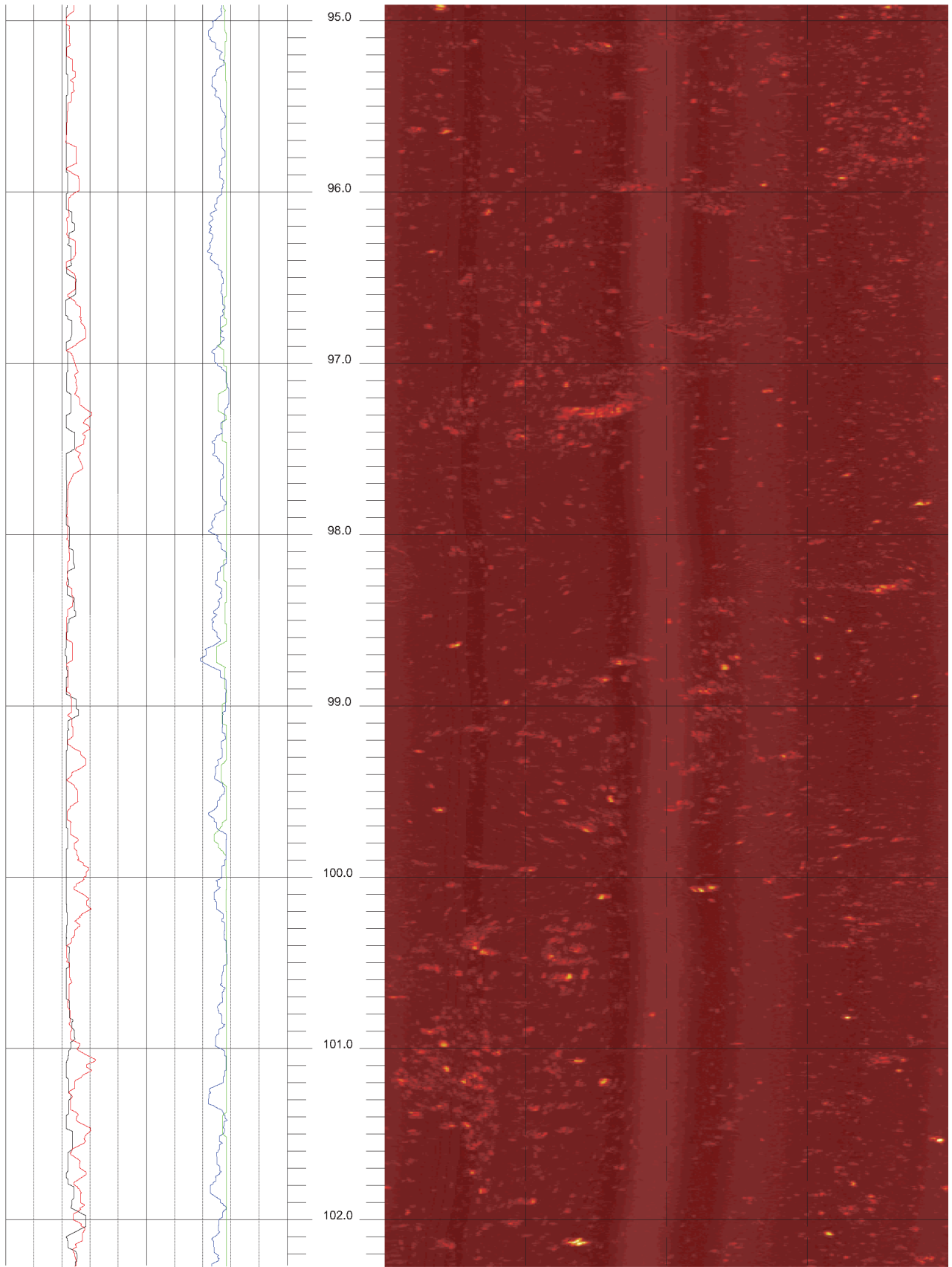
12



R-7-1

94.908 to 87.540ft

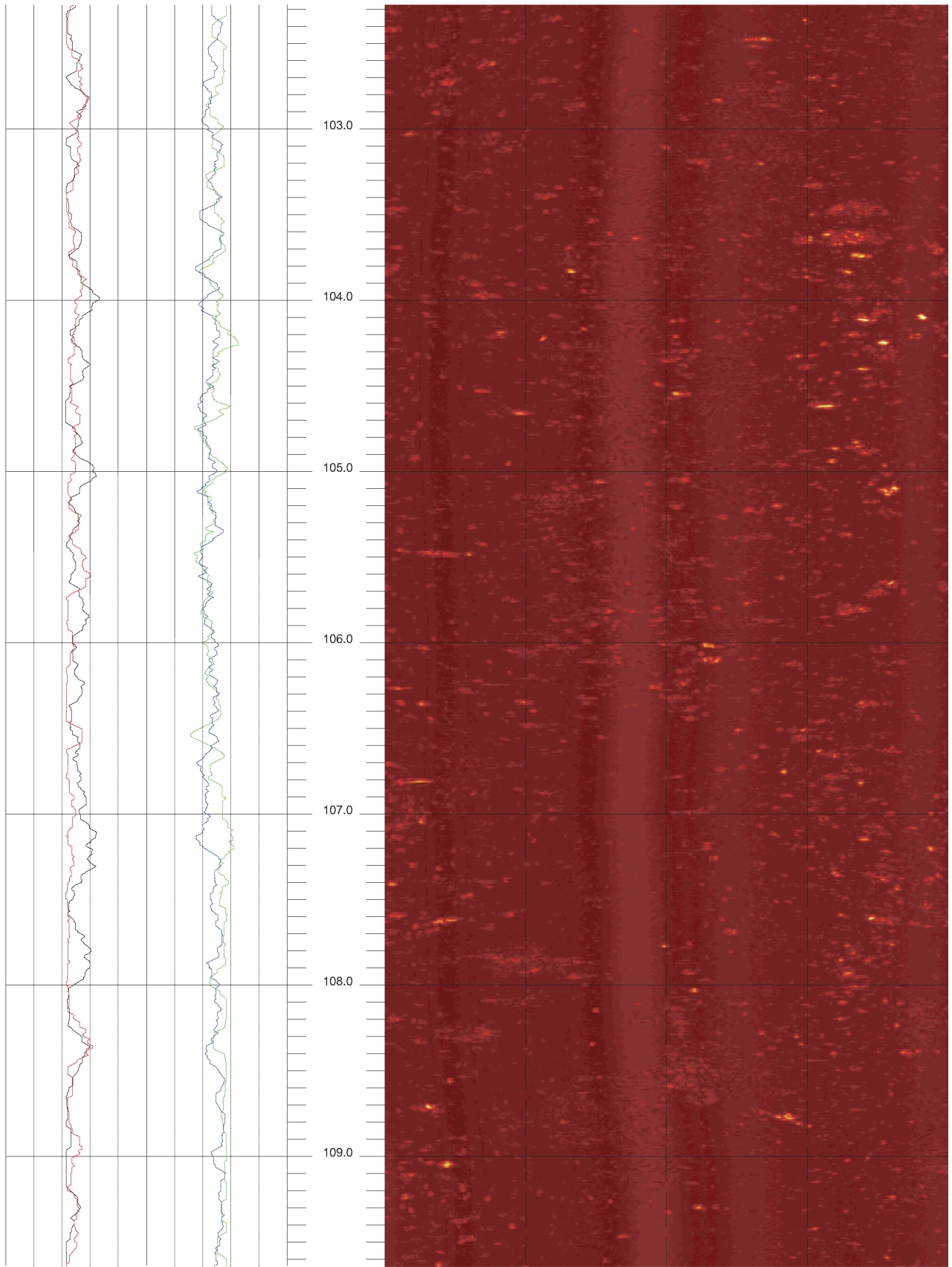
13



R-7-1

102.276 to 94.908ft

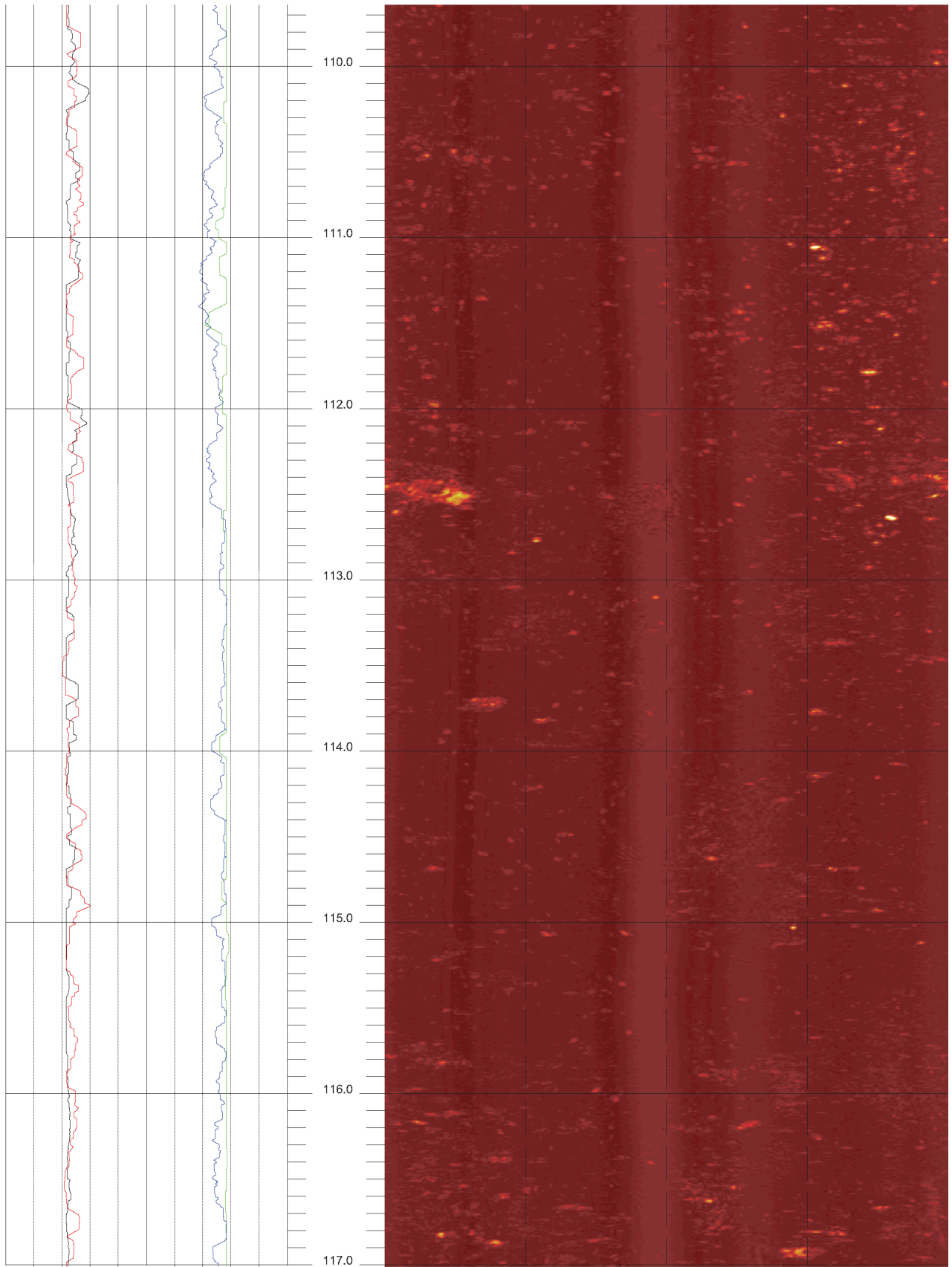
14



R-7-1

109.644 to 102.276ft

15

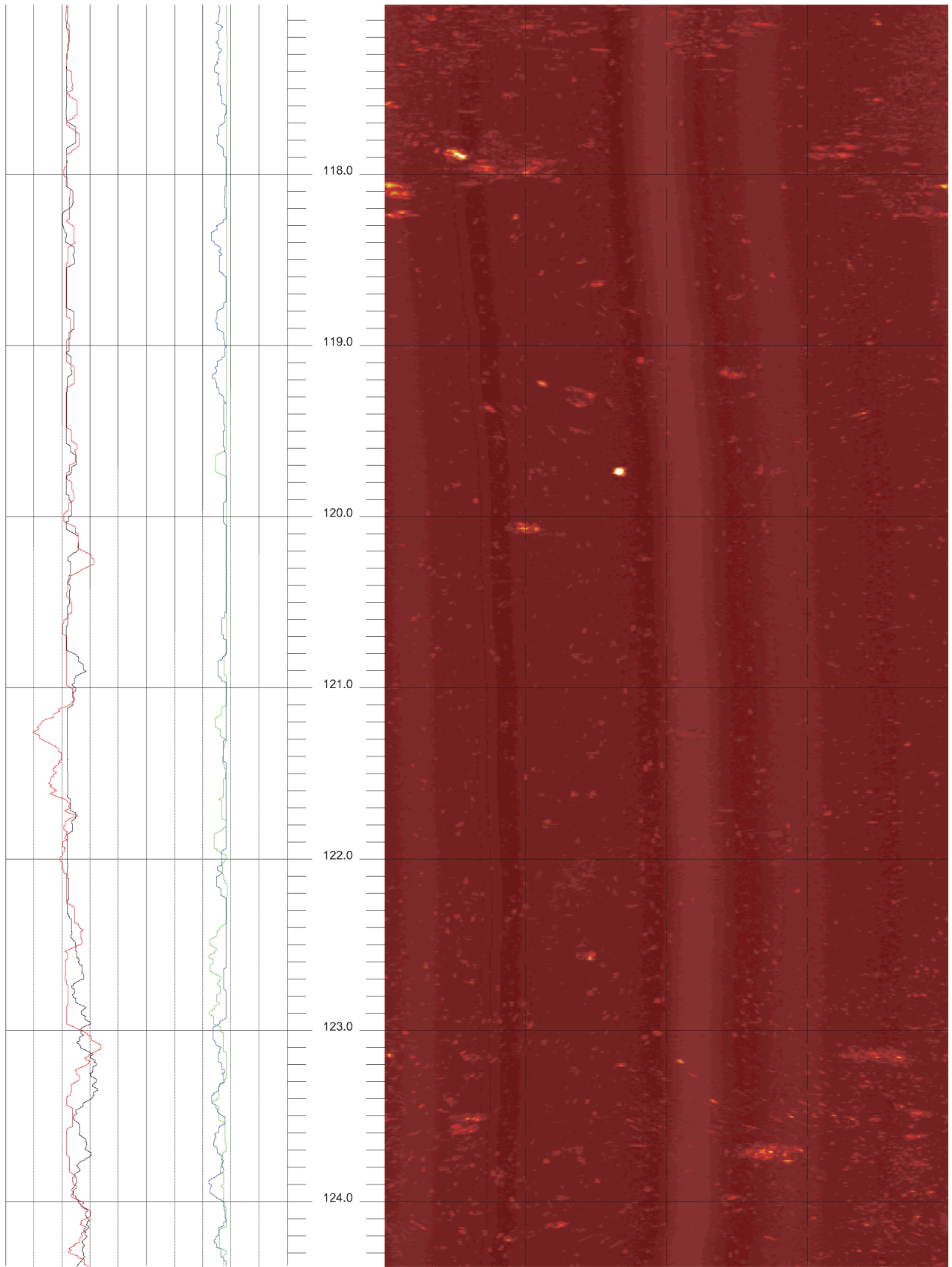


R-7-1

117.012 to 109.644ft

16

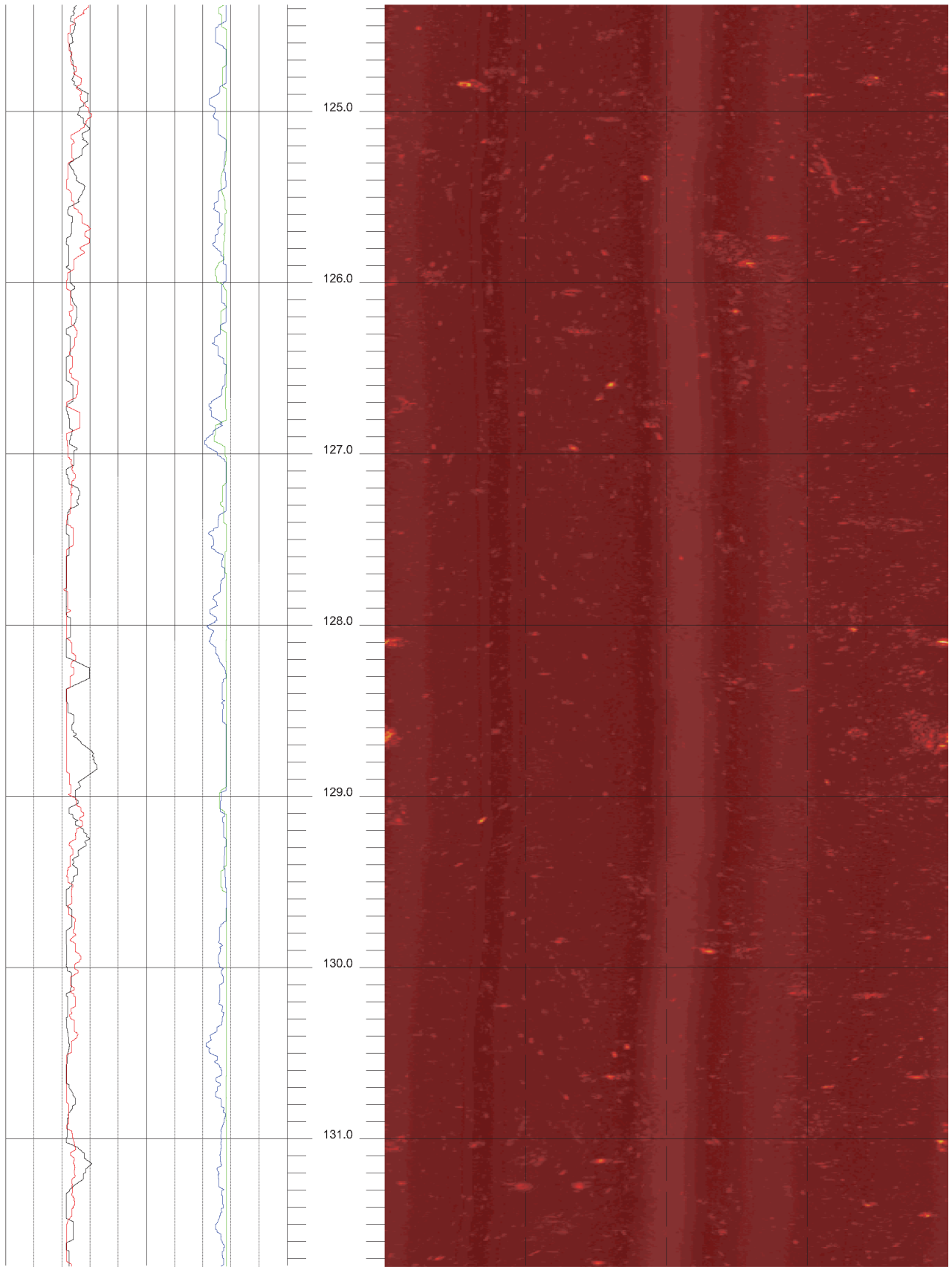




R-7-1

124.380 to 117.012ft

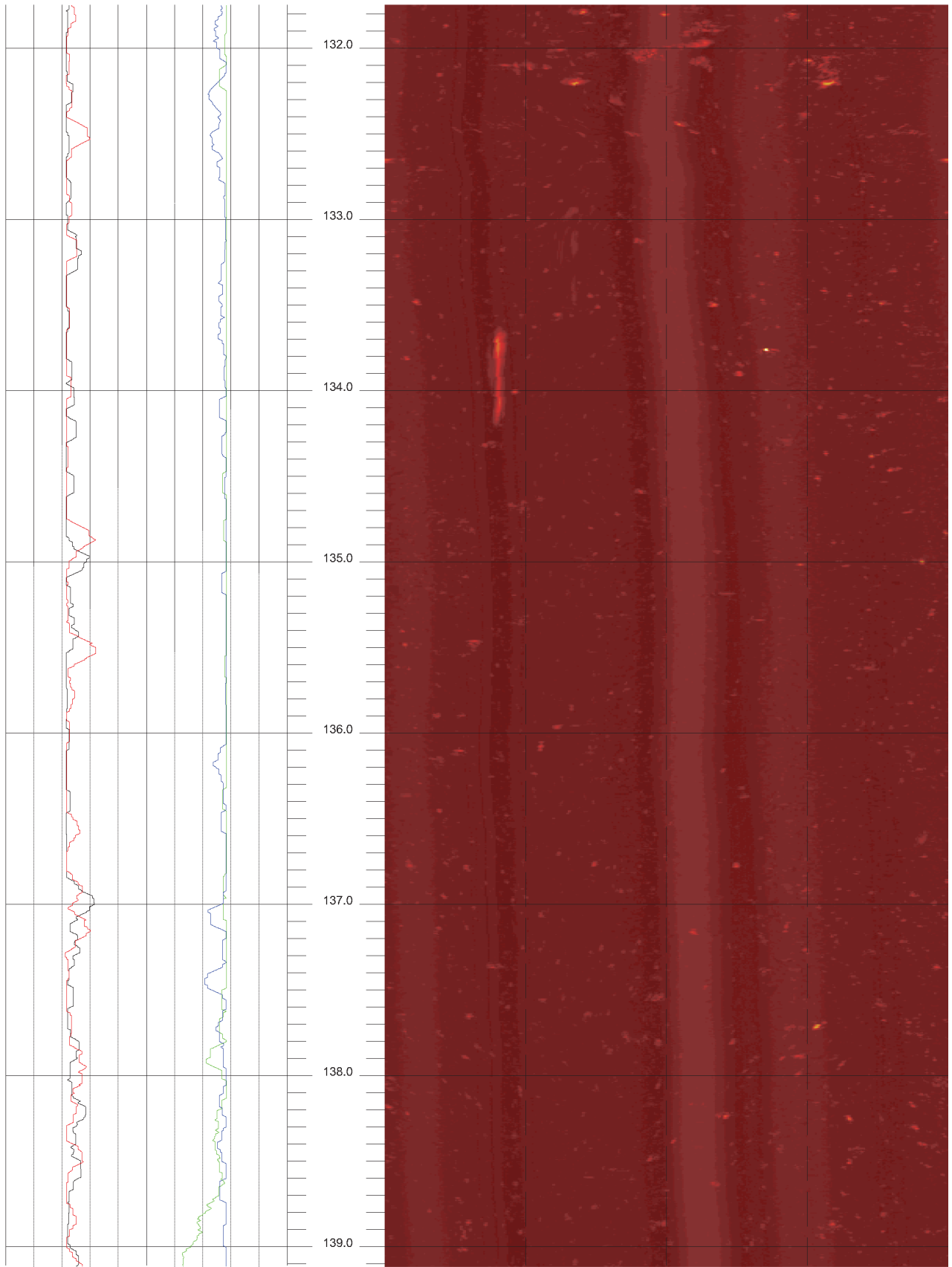
17



R-7-1

131.748 to 124.380ft

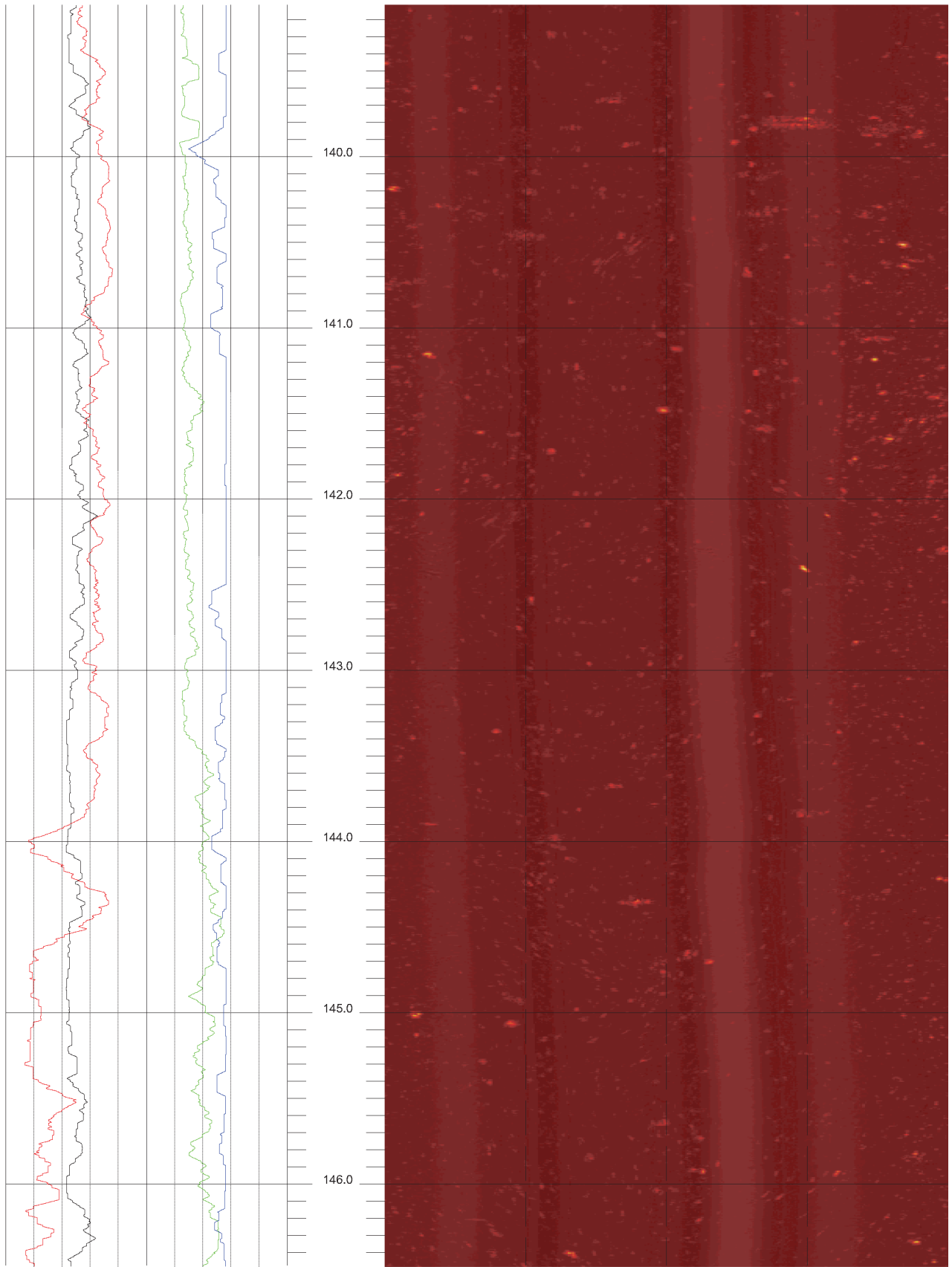
18



R-7-1

139.116 to 131.748ft

19



R-7-1

146.484 to 139.116ft

20