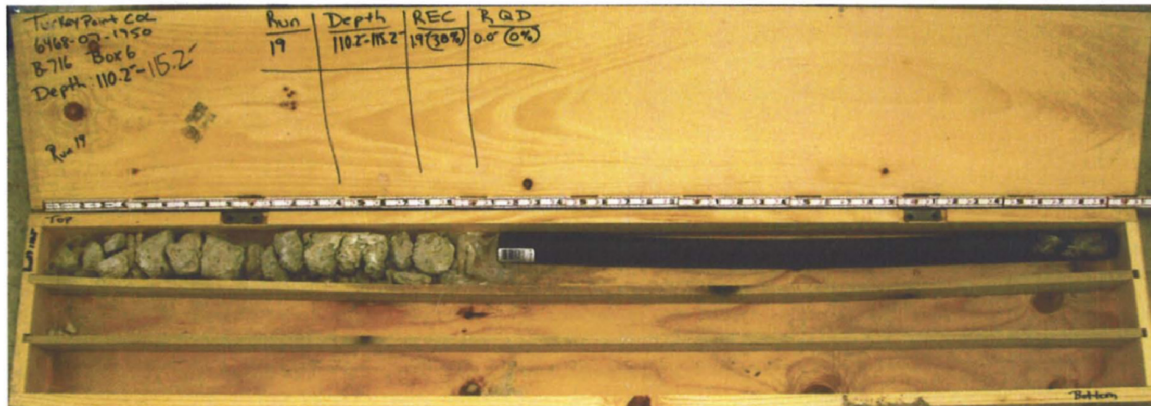


B-716 - Box 5



B-716 - Box 6



GEOTECHNICAL BORING LOG

Prepared By SP4 Date 8-19-08

Checked By SP2 Date 8/19/08

SHEET 1 OF 2

BECHTEL PROJECT NO.: 25409		MACTEC PROJECT NO.: 6468-07-1950		COUNTY: Miami-Dade		GEOLOGIST: M. Lear								
SITE DESCRIPTION: Turkey Point COL		DRILL MACHINE: CME-550 (ATL)		DRILLER: L. Carter/ J. Landeros		GROUND WATER (ft)								
BORING NO.: B-717		DRILL METHOD: Mud Rotary/ Core		SAMPLE METHODS: SPT/Core		0 HR. NA								
GROUND ELEV.: -1.1 ft (NAVD88)		NORTHING: 397,287 US ft (NAD83/90)		EASTING: 875,873 US ft (NAD83/90)		24 HR. NA								
TOTAL DEPTH: 127.2 ft		BORING DIAMETER: 4" to 18.3', 3" to 127.2'		CASING DEPTH: 4" to 18.3', 3" to 118.1'		HAMMER (ID): 140 lb. Auto (MEC-03)								
DATE STARTED: 4/15/08		COMPLETED: 4/17/08		CORE SIZE: HQ3		BITS USED: 3" & 4" Tricones								
ELEV. (ft)	DEPTH (ft)	BLOW COUNT			BLOWS PER FOOT					SAMP. NO.	MOI	LOG	SOIL AND ROCK DESCRIPTION	
		0.5ft	0.5ft	0.5ft	0	20	40	60	80					100
-1.1					Ground Surface									0.0
-1.1	0.0	WOH	WOH	WOH							717-1			
-3.7	2.6										717-2A&B			
-6.1	5.0	WOH	1	16							717-3			
-8.5	7.4	8	6	6							717-4			
-11.1	10.0	5	4	7							717-5			
-13.6	12.5	7	5	9							717-6			
-15.9	14.8	4	14	14							717-7			
		18	17	46										
-20.5	19.4													
-21.0	19.9	50/0.5									717-8			
											RUN-1			
-24.2	23.1										RUN-2			
-29.2	28.1										RUN-3			
-34.2	33.1										RUN-4			
-39.2	38.1										RUN-5			
-44.2	43.1										RUN-6			
-49.2	48.1										RUN-7			
-54.2	53.1										RUN-8			
-59.2	58.1										RUN-9			
-64.2	63.1										RUN-10			
-69.2	68.1										RUN-11			
-74.2	73.1										RUN-12			

TURKEY POINT COL BORE: TURKEY POINT GP1, TURKEY POINT COL GDT 8:19 08



BECHTEL PROJECT NO.: 25409		MACTEC PROJECT NO.: 6468-07-1950			COUNTY: Miami-Dade		GEOLOGIST: M. Lear					
SITE DESCRIPTION: Turkey Point COL				DRILL MACHINE: CME-550 (ATL)		DRILLER: L. Carter/ J. Landeros			GROUND WATER (ft)			
BORING NO.: B-717				DRILL METHOD: Mud Rotary/ Core		SAMPLE METHODS: SPT/Core			0 HR. NA			
GROUND ELEV.: -1.1 ft (NAVD88)		NORTHING: 397,287 US ft (NAD83/90)		EASTING: 875,873 US ft (NAD83/90)		24 HR. NA						
TOTAL DEPTH: 127.2 ft		BORING DIAMETER: 4" to 18.3', 3" to 127.2'			CASING DEPTH: 4" to 18.3', 3" to 118.1'		HAMMER (ID):140 lb. Auto (MEC-03)					
DATE STARTED: 4/15/08		COMPLETED: 4/17/08		CORE SIZE: HQ3		BITS USED: 3" & 4" Tricones						
ELEV. (ft)	DEPTH (ft)	BLOW COUNT			BLOWS PER FOOT					SAMP. NO.	LOG	SOIL AND ROCK DESCRIPTION
		0.5ft	0.5ft	0.5ft	0	20	40	60	80			
-75.9					Continued from previous page							
-79.2	78.1											73.1ft: light gray (10YR7/1), to white (7.5YR8/1)
-84.2	83.1									RUN-13		75.0 to 76.0ft: possible interbedded sand layer LIMESTONE, boundstone, light gray (10YR7/1), moderately hard, moderately indurated, trace vugs, fossiliferous, strong HCl reaction, sandy (continued)
-89.2	88.1									RUN-14		78.1ft: white (7.5YR8/1)
-94.2	93.1									RUN-15		83.1ft: few shell molds and casts
-99.2	98.1									RUN-16		93.1ft: indurated, little to some shell molds and casts
-104.2	103.1									RUN-17		
-109.2	108.1									RUN-18		
-114.2	113.1									RUN-19		108.1ft: moderately indurated
-119.2	118.1	28	27	27						RUN-20		
-126.8	125.7	6	9	14						717-9		114.0 to 115.1: SANDSTONE, light greenish gray (10Y7/1), medium hard, moderately indurated, trace shell fragments, strong HCl reaction (Tamiami Formation)
										717-10		115.1 to 119.2: Silty SAND (SM), greenish gray (10Y5/1), very dense, wet, fine grained sand, little fines, strong HCl reaction, trace shell fragments
												119.2 to 125.7: 125.7ft: medium dense, weak HCl reaction, trace limestone fragments
												Boring Terminated at Elevation -128.3 ft

TURKEY POINT COL BORE TURKEY POINT GPJ TURKEY POINT COL.GDT 8/19/08



BECHTEL PROJECT NO.: 25409		MACTEC PROJECT NO.: 6468-07-1950		COUNTY: Miami-Dade		GEOLOGIST: M. Lear	
SITE DESCRIPTION: Turkey Point COL		DRILL MACHINE: CME-550 (ATL)		DRILLER: L. Carter/ J. Landeros		GROUND WATER (ft)	
BORING NO.: B-717		DRILL METHOD: Mud Rotary/ Core		SAMPLE METHODS: SPT/Core		0 HR. NA	
GROUND ELEV.: -1.1 ft (NAVD88)		NORTHING: 397,287 US ft (NAD83/90)		EASTING: 875,873 US ft (NAD83/90)		24 HR. NA	
TOTAL DEPTH: 127.2 ft		CASING DEPTH: 4" to 18.3', 3" to 118.1'				HAMMER (ID): 140 lb. Auto (MEC-03)	
DATE STARTED: 4/15/08		COMPLETED: 4/17/08		CORE SIZE: HQ3		CORE BARREL TYPE: Triple Tube Wireline (Split inner liners)	

ELEV. (ft)	DEPTH (ft)	RUN (ft)	DRILL RATE (Min/ft)	RUN		SAMP. NO.	STRATA		LOG	DESCRIPTION AND REMARKS
				REC (ft) %	RQD (ft) %		REC (ft) %	RQD (ft) %		
										Begin Coring @ 19.9 ft
-21.0	19.9	3.2	0:23/0.2	(1.6)	(0.0)	RUN-1	(1.9)	(0.0)		LIMESTONE, boundstone, light gray (10YR7/2), very soft, wet, sandy, fossiliferous, friable, oolitic, strong HCl reaction (Miami Formation) (continued)
-24.2	23.1		0:29 0:13 0:15	50%	0%		37%	0%		19.9ft. medium hard to moderately hard, moderately indurated, locally interconnected vugs
		5.0	2:13 0:19 1:05 1:50 1:17	(3.4)	(2.0)	RUN-2			-26.1	LIMESTONE, boundstone, white (10YR8/1), moderately hard, moderately indurated to indurated, trace vugs, coralline, fossiliferous, strong HCl reaction (Upper Fort Thompson Formation)
-29.2	28.1			68%	40%		(21.3)	(18.3)		25.0ft. loss of circulation
		5.0	3:29 1:31 1:23 1:07 1:16	(5.0)	(4.3)	RUN-3				28.1ft. moderately hard to hard, indurated, little vugs, recrystallized calcite
-34.2	33.1			100%	86%					33.1ft. moderately hard, moderately indurated to indurated, few vugs
		5.0	1:48 0:45 0:17 0:37 0:48	(2.7)	(1.8)	RUN-4				38.1ft. light gray (10YR7/1), hard, indurated
-39.2	38.1			54%	36%					43.1ft. horizontal bedding plane at 47.5ft
		5.0	0:52 1:50 2:03 2:15 2:04	(4.7)	(4.4)	RUN-5				48.1ft. light gray (10YR7/1) to 48.9ft. horizontal bedding plane at 48.9ft
-44.2	43.1			94%	88%		(16.7)	(13.9)		LIMESTONE, boundstone, white (7.5YR8/1), hard, indurated, trace vugs, fossiliferous, few shell molds and casts, strong HCl reaction (Lower Fort Thompson Formation)
		5.0	2:00 3:04 2:42 2:44 2:39	(5.0)	(5.0)	RUN-6			-50.0	53.1ft. white (7.5YR8/1)
-49.2	48.1			100%	100%					58.1ft. light gray (10YR7/1), trace vugs, trace shell molds and casts
		5.0	2:16 1:55 2:12 1:52 1:36	(5.0)	(5.0)	RUN-7				63.1ft. moderately hard, moderately indurated
-54.2	53.1			100%	100%		(0.0)	(NA)		possible POORLY SORTED SAND (SP), based on fast drilling rate and lack of recovery
		5.0	1:00 1:01 1:18 1:28 0:48	(4.7)	(3.8)	RUN-8			-70.7	LIMESTONE, boundstone, light gray (10YR7/1), moderately hard, moderately indurated, trace vugs, fossiliferous, strong HCl reaction, sandy
-59.2	58.1			94%	76%		(35.4)	(21.2)		73.1ft. light gray (10YR7/1), to white (7.5YR8/1)
		5.0	1:22 1:56 2:21 2:12 1:59	(5.0)	(4.2)	RUN-9				75.0 to 76.0ft: possible interbedded sand layer
-64.2	63.1			100%	84%					78.1ft. white (7.5YR8/1)
		5.0	1:31 1:17 1:08 0:42 0:22	(2.8)	(1.7)	RUN-10				83.1ft. few shell molds and casts
-69.2	68.1			56%	34%					88.1ft. indurated, little to some shell molds and casts
		5.0	0:25 1:30 2:47 1:32 1:38	(3.5)	(2.4)	RUN-11				
-74.2	73.1			70%	48%					
		5.0	1:38 2:02 0:07 2:28 1:13	(3.4)	(1.9)	RUN-12				
-79.2	78.1			68%	38%					
		5.0	1:44 2:27 1:26 1:10 1:04	(4.2)	(2.7)	RUN-13				
-84.2	83.1			84%	54%					
		5.0	0:52 0:49 0:50 2:53 1:26	(3.4)	(1.4)	RUN-14				
-89.2	88.1			68%	28%					
		5.0	2:33 1:15 0:53 1:30 1:11	(3.9)	(2.0)	RUN-15				
-94.2	93.1			78%	40%					
		5.0	0:26	(4.9)	(4.1)	RUN-16				
										93.1ft. indurated, little to some shell molds and casts

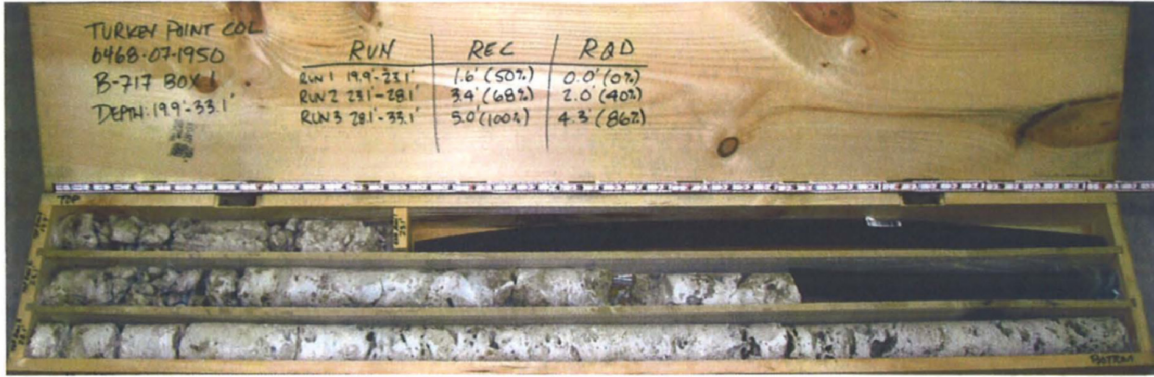
TURKEY POINT COL CORE TURKEY POINT GP TURKEY POINT COL GDT 8/19/08



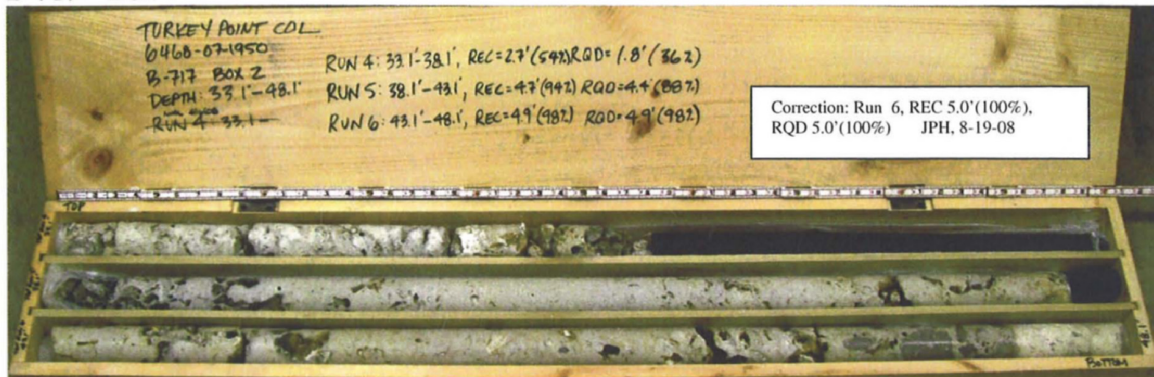
BECHTEL PROJECT NO.: 25409		MACTEC PROJECT NO.: 6468-07-1950		COUNTY: Miami-Dade	GEOLOGIST: M. Lear
SITE DESCRIPTION: Turkey Point COL		DRILL MACHINE: CME-550 (ATL)		DRILLER: L. Carter/ J. Landeros	
BORING NO.: B-717		DRILL METHOD: Mud Rotary/ Core		SAMPLE METHODS: SPT/Core	
GROUND ELEV.: -1.1 ft (NAVD88)		NORTHING: 397,287 US ft (NAD83/90)		EASTING: 875,873 US ft (NAD83/90)	
TOTAL DEPTH: 127.2 ft		CASING DEPTH: 4" to 18.3', 3" to 118.1'			HAMMER (ID): 140 lb. Auto (MEC-03)
DATE STARTED: 4/15/08		COMPLETED: 4/17/08		CORE SIZE: HQ3	CORE BARREL TYPE: Triple Tube Wireline (Split inner liners)

ELEV. (ft)	DEPTH (ft)	RUN (ft)	DRILL RATE (Min/ft)	RUN		SAMP. NO.	STRATA		LOG	DESCRIPTION AND REMARKS
				REC (ft) %	RQD (ft) %		REC (ft) %	RQD (ft) %		
										Continued from previous page
-99.2	98.1		0.15 0.22 0.31 0.38	98%	82%					LIMESTONE, boundstone, light gray (10YR7/1), moderately hard, moderately indurated, trace vugs, fossiliferous, strong HCl reaction, sandy (continued)
		5.0	0.35 0.31 0.49 0.37 0.45	(3.8) 76%	(1.5) 30%	RUN-17				
-104.2	103.1									
		5.0	0.42 0.47 0.50 0.51 0.38	(5.0) 100%	(4.3) 86%	RUN-18				
-109.2	108.1									
		5.0	0.46 1.16 1.24 1.12 0.55	(2.4) 48%	(0.9) 18%	RUN-19				108.1ft: moderately indurated
-114.2	113.1									
		5.0	0.41 0.49 0.28 0.44 0.57	(2.0) 40%	(0.0) 0%	RUN-20	(1.1) 100%	(0.0) 0%		
-119.2	118.1						(0.0) 0%	(NA)		
										SANDSTONE, light greenish gray (10Y7/1), medium hard, moderately indurated, trace shell fragments, strong HCl reaction (Tamiami Formation) Silty SAND (SM), greenish gray (10Y5/1), very dense, wet, fine grained sand, little fines, strong HCl reaction, trace shell fragments Coring Terminated at Elevation -119.2

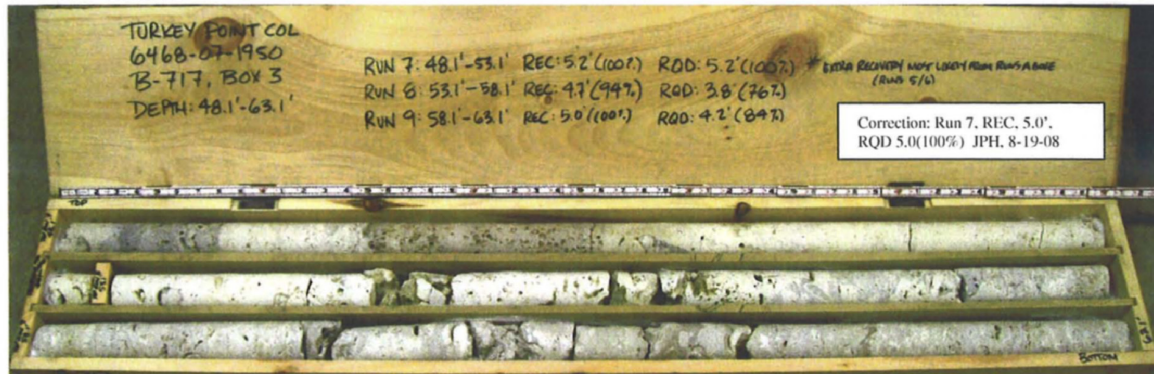
TURKEY POINT COL CORE TURKEY POINT.GPJ TURKEY POINT COL.GDT 8/19/08



B-717 - Box 1



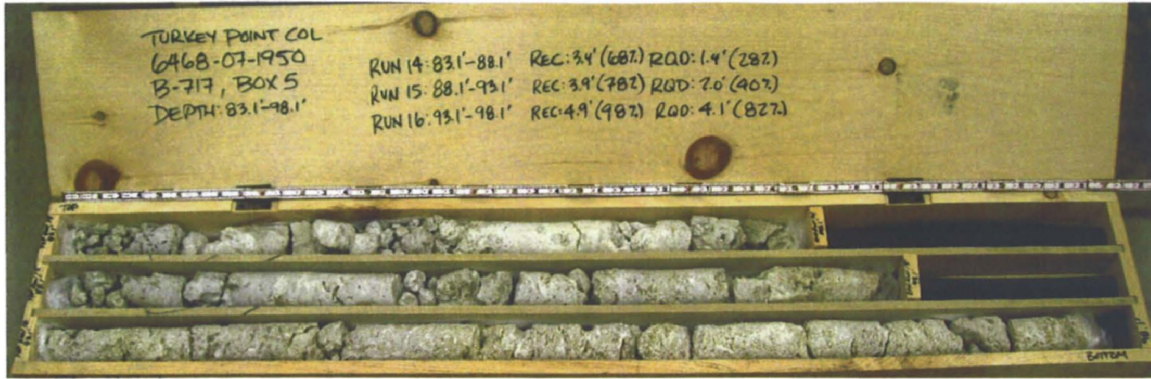
B-717 - Box 2



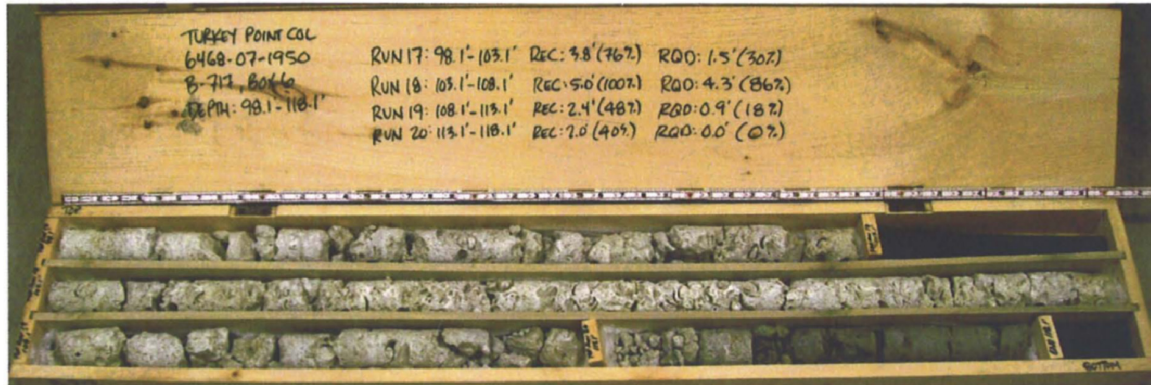
B-717 - Box 3



B-717 - Box 4



B-717 - Box 5



B-717 - Box 6



GEOTECHNICAL BORING LOG

Prepared By DPZ Date 5-30-08

Checked By [Signature] Date 5-31-08

SHEET 1 OF 3

BECHTEL PROJECT NO.: 25409		MACTEC PROJECT NO.: 6468-07-1950		COUNTY: Miami-Dade		GEOLOGIST: L. Bisson							
SITE DESCRIPTION: Turkey Point COL		DRILL MACHINE: CME-550 (ATL)		DRILLER: L. Carter/ J. Landeros		GROUND WATER (ft)							
BORING NO.: B-718		DRILL METHOD: Mud Rotary/ Core		SAMPLE METHODS: SPT/Core		0 HR. NA							
GROUND ELEV.: -1.2 ft (NAVD88)		NORTHING: 397,191 US ft (NAD83/90)		EASTING: 875,793 US ft (NAD83/90)		24 HR. NA							
TOTAL DEPTH: 150.8 ft		BORING DIAMETER: 4" to 34.8', 3" to 150.8'		CASING DEPTH: 4" to 34.8', 3" to 120.0'		HAMMER (ID): 140 lb. Auto (MEC-03)							
DATE STARTED: 4/3/08		COMPLETED: 4/5/08		CORE SIZE: HQ3		BITS USED: 3" & 4" Roller Cones							
ELEV. (ft)	DEPTH (ft)	BLOW COUNT			BLOWS PER FOOT					SAMP. NO.	LOG	SOIL AND ROCK DESCRIPTION	
		0.5ft	0.5ft	0.5ft	0	20	40	60	80				100
-1.2													
-1.2	0.0	WOR	WOR	WOR									0.0
-3.7	2.5	4	5	8						718-1			-4.3
-6.2	5.0	8	7	6						718-2A&B			3.1
-8.7	7.5	8	11	4						718-3			
-11.2	10.0	WOH	3	13						718-4			
-13.7	12.5	6	10	14						718-5			
-16.2	15.0	20	22	21						718-6			
-20.7	19.5	6	4	5						718-7			
-25.7	24.5	6	23	30						718-8			
-30.7	29.5	9	33	13						718-9			
-35.7	34.5									718-10			
-36.0	34.8	50/0.3								718-11			
-39.1	37.9									RUN-1			
-44.1	42.9									RUN-2			
-49.1	47.9									RUN-3			
-54.1	52.9									RUN-4			
-59.1	57.9									RUN-5			
-64.1	62.9									RUN-6			
-69.1	67.9									RUN-7			
-74.1	72.9									RUN-8			
										RUN-9			

TURKEY POINT COL BORE TURKEY POINT.GPJ TURKEY POINT COL.GDT 5/30/08





BECHTEL PROJECT NO.: 25409		MACTEC PROJECT NO.: 6468-07-1950		COUNTY: Miami-Dade		GEOLOGIST: L. Bisson							
SITE DESCRIPTION: Turkey Point COL		DRILL MACHINE: CME-550 (ATL)		DRILLER: L. Carter/ J. Landeros		GROUND WATER (ft)							
BORING NO.: B-718		DRILL METHOD: Mud Rotary/ Core		SAMPLE METHODS: SPT/Core		0 HR.	NA						
GROUND ELEV.: -1.2 ft (NAVD88)		NORTHING: 397,191 US ft (NAD83/90)		EASTING: 875,793 US ft (NAD83/90)		24 HR.	NA						
TOTAL DEPTH: 150.8 ft		BORING DIAMETER: 4" to 34.8', 3" to 150.8'		CASING DEPTH: 4" to 34.8', 3" to 120.0'		HAMMER (ID): 140 lb. Auto (MEC-03)							
DATE STARTED: 4/3/08		COMPLETED: 4/5/08		CORE SIZE: HQ3		BITS USED: 3" & 4" Roller Cones							
ELEV. (ft)	DEPTH (ft)	BLOW COUNT			BLOWS PER FOOT					SAMP. NO.	LOG	SOIL AND ROCK DESCRIPTION	
		0.5ft	0.5ft	0.5ft	0	20	40	60	80				100
-76.0					Continued from previous page								
-79.1	77.9												moderately indurated 74.0 to 83.0ft: possible interbedded sand layers; based on drill rates LIMESTONE, boundstone, white (10YR8/1), to pale brown (10YR6/3), hard, indurated, fossiliferous, trace shell molds, trace vugs, strong HCl reaction (Lower Fort Thompson Formation) (continued)
-84.1	82.9												77.9ft: medium hard, interbedded sand layers through out
-89.1	87.9												82.9ft: moderately hard, moderately indurated to indurated
-94.1	92.9												87.9ft: moderately hard to hard
-99.1	97.9												92.9ft: medium hard
-104.1	102.9												97.7ft: few vugs, little shell molds and casts
-109.1	107.9												102.9ft: moderately hard
-114.1	112.9												107.9ft: white (2.5Y8/1), to light gray (10YR7/1), medium hard, few shell molds and casts
-119.5	118.3												112.9ft: light gray (10YR7/1), moderately hard, trace vugs
-128.6	127.4	4	5	9									Silly SAND (SM), light gray (2.5Y7/1), to light greenish gray (10Y7/1), medium dense, wet, fine grained sand, strong HCl reaction, trace shell fragments (Tamiami Formation) 118.3ft: Switched sampling method to SPT
-138.6	137.4	3	5	5									127.4ft: olive gray (5Y5/2), loose
-150.5	149.3	7	7	9									Sandy SILT (ML), olive gray (5Y4/3), very stiff, wet, strong HCl reaction

TURKEY POINT COL BORE TURKEY POINT GPJ TURKEY POINT COL.GDT 5:30:08



BECHTEL PROJECT NO.: 25409		MACTEC PROJECT NO.: 6468-07-1950		COUNTY: Miami-Dade		GEOLOGIST: L. Bisson								
SITE DESCRIPTION: Turkey Point COL		DRILL MACHINE: CME-550 (ATL)		DRILLER: L. Carter/ J. Landeros		GROUND WATER (ft)								
BORING NO.: B-718		DRILL METHOD: Mud Rotary/ Core		SAMPLE METHODS: SPT/Core		0 HR. NA								
GROUND ELEV.: -1.2 ft (NAVD88)		NORTHING: 397,191 US ft (NAD83/90)		EASTING: 875,793 US ft (NAD83/90)		24 HR. NA								
TOTAL DEPTH: 150.8 ft		BORING DIAMETER: 4" to 34.8', 3" to 150.8'		CASING DEPTH: 4" to 34.8', 3" to 120.0'		HAMMER (ID): 140 lb. Auto (MEC-03)								
DATE STARTED: 4/3/08		COMPLETED: 4/5/08		CORE SIZE: HQ3		BITS USED: 3" & 4" Roller Cones								
ELEV. (ft)	DEPTH (ft)	BLOW COUNT			BLOWS PER FOOT					SAMP. NO.	MOI	LOG	SOIL AND ROCK DESCRIPTION	
		0.5ft	0.5ft	0.5ft	0	20	40	60	80					100
-150.8					Continued from previous page									
		5	7	9						718-15				
														Boring Terminated at Elevation -152.0 ft

TURKEY POINT COL BORE TURKEY POINT GPJ TURKEY POINT COL.GDT 5:30 08



BECHTEL PROJECT NO.: 25409		MACTEC PROJECT NO.: 6468-07-1950		COUNTY: Miami-Dade		GEOLOGIST: L. Bisson	
SITE DESCRIPTION: Turkey Point COL		DRILL MACHINE: CME-550 (ATL)		DRILLER: L. Carter/ J. Landeros		GROUND WATER (ft)	
BORING NO.: B-718		DRILL METHOD: Mud Rotary/ Core		SAMPLE METHODS: SPT/Core		0 HR. NA	
GROUND ELEV.: -1.2 ft (NAVD88)		NORTHING: 397,191 US ft (NAD83/90)		EASTING: 875,793 US ft (NAD83/90)		24 HR. NA	
TOTAL DEPTH: 150.8 ft		CASING DEPTH: 4" to 34.8', 3" to 120.0'				HAMMER (ID): 140 lb. Auto (MEC-03)	
DATE STARTED: 4/3/08		COMPLETED: 4/5/08		CORE SIZE: HQ3		CORE BARREL TYPE: Triple Tube Wireline (Split inner liners)	

ELEV. (ft)	DEPTH (ft)	RUN (ft)	DRILL RATE (Min/ft)	RUN		SAMP. NO.	STRATA		LOG	DESCRIPTION AND REMARKS
				REC (ft) %	RQD (ft) %		REC (ft) %	RQD (ft) %		
										Begin Coring @ 34.8 ft
-36.0	34.8	3.1	0:48	(3.1)	(2.2)	RUN-1	(12.3)	(10.6)		LIMESTONE, boundstone, white (10YR8/1), to light brownish gray (10YR6/2), hard, wet, fossiliferous, trace vugs, strong HCl reaction (Upper Fort Thompson Formation) (continued)
-39.1	37.9	5.0	0:09/0.1	(5.0)	(4.9)	RUN-2				34.8ft: white (2.5Y8/1) and gray (2.5Y6/1), indurated, coralline, little vugs 37.9ft: white (2.5Y8/1), trace vugs, trace recrystallized calcite
-44.1	42.9	5.0	0:59 0:49 1:26 1:17 1:16	(5.0)	(4.3)	RUN-3				42.9ft: white (2.5Y8/1), to pale yellow (2.5Y7/4), to gray (2.5Y6/1), moderately hard, moderately indurated, mostly coralline, horizontal bedding plane at 47.1ft
-49.1	47.9	5.0	1:20 1:08 1:28 1:53 1:20	(5.0)	(4.5)	RUN-4	(56.0)	(35.3)	-48.3	LIMESTONE, boundstone, white (10YR8/1), to pale brown (10YR6/3), hard, indurated, fossiliferous, trace shell molds, trace vugs, strong HCl reaction (Lower Fort Thompson Formation)
-54.1	52.9	5.0	1:19 2:01 2:03 2:47 2:04	(5.0)	(4.5)	RUN-5	82%	52%		52.9ft: white (10YR8/1), trace sandy
-59.1	57.9	5.0	1:05 1:26 1:28 1:05 2:08	(4.6)	(3.9)	RUN-6				57.9ft: white (2.5Y 8/1), to light gray (2.5Y7/1), moderately hard to hard, sandy, trace to few shell molds and casts
-64.1	62.9	5.0	1:42 2:49 1:40 1:42 1:51	(5.0)	(3.7)	RUN-7				62.9ft: light gray (10YR7/1), moderately hard, moderately indurated
-69.1	67.9	5.0	1:13 1:06 1:26 1:08 0:50	(4.6)	(3.1)	RUN-8				67.9ft: white (10YR8/1), moderately hard, moderately indurated to indurated
-74.1	72.9	5.0	0:20 1:29 2:11 1:25 1:24	(4.4)	(2.7)	RUN-9				72.9ft: medium hard to moderately hard, moderately indurated 74.0 to 83.0ft: possible interbedded sand layers, based on drill rates
-79.1	77.9	5.0	1:03 0:21 0:23 1:01 3:39	(3.5)	(1.1)	RUN-10				77.9ft: medium hard, interbedded sand layers through out
-84.1	82.9	5.0	0:46 0:23 0:22 0:09 0:38	(2.2)	(0.8)	RUN-11				82.9ft: moderately hard, moderately indurated to indurated
-89.1	87.9	5.0	0:30 0:25 1:04 1:34 2:49	(4.2)	(1.7)	RUN-12				87.9ft: moderately hard to hard
-94.1	92.9	5.0	1:40 0:48 1:45 1:30 1:35	(4.7)	(3.0)	RUN-13				92.9ft: medium hard
-99.1	97.9	5.0	0:24 0:26 0:26 0:57 0:45	(4.2)	(2.5)	RUN-14				97.7ft: few vugs, little shell molds and casts
-104.1	102.9	5.0	0:25 0:14 0:42 0:32 0:50	(3.7)	(2.8)	RUN-15				102.9ft: moderately hard
-109.1	107.9	5.0	0:48 0:42 0:39 0:27 0:52	(4.9)	(3.4)	RUN-16				107.9ft: white (2.5Y8/1), to light gray (10YR7/1), medium hard, few shell molds

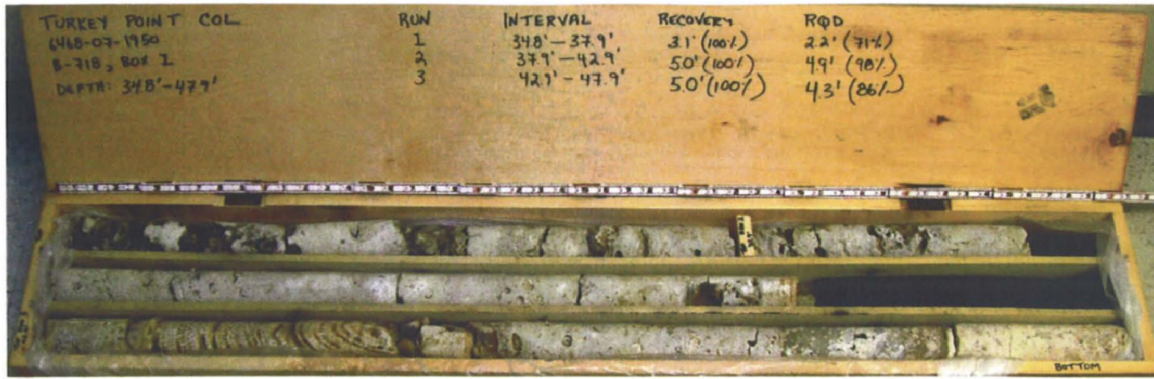
TURKEY POINT COL CORE TURKEY POINT COL GDT 5/30/08



BECHTEL PROJECT NO.: 25409		MACTEC PROJECT NO.: 6468-07-1950		COUNTY: Miami-Dade		GEOLOGIST: L. Bisson	
SITE DESCRIPTION: Turkey Point COL		DRILL MACHINE: CME-550 (ATL)		DRILLER: L. Carter/ J. Landeros		GROUND WATER (ft)	
BORING NO.: B-718		DRILL METHOD: Mud Rotary/ Core		SAMPLE METHODS: SPT/Core		0 HR. NA	
GROUND ELEV.: -1.2 ft (NAVD88)		NORTHING: 397,191 US ft (NAD83/90)		EASTING: 875,793 US ft (NAD83/90)		24 HR. NA	
TOTAL DEPTH: 150.8 ft		CASING DEPTH: 4" to 34.8', 3" to 120.0'				HAMMER (ID): 140 lb. Auto (MEC-03)	
DATE STARTED: 4/3/08		COMPLETED: 4/5/08		CORE SIZE: HQ3		CORE BARREL TYPE: Triple Tube Wireline (Split inner liners)	

ELEV. (ft)	DEPTH (ft)	RUN (ft)	DRILL RATE (Min/ft)	RUN		SAMP. NO.	STRATA		LOG	DESCRIPTION AND REMARKS
				REC (ft) %	RQD (ft) %		REC (ft) %	RQD (ft) %		
										Continued from previous page
-114.1	112.9	5.0	0.38 0.54 0.43 1.32	70%	26%	RUN-17				and casts LIMESTONE, boundstone, white (10YR8/1), to pale brown (10YR6/3), hard, indurated, fossiliferous, trace shell molds, trace vugs, strong HCl reaction (Lower Fort Thompson Formation) (continued)
			0.27 0.32 0.08 0.10 0.18	(0.7) 14%	(0.0) 0%		(0.0) 0%	(NA)		112.9ft: light gray (10YR7/1), moderately hard, trace vugs
-119.1	117.9									Silty SAND (SM), light gray (2.5Y7/1), to light greenish gray (10Y7/1), medium dense, wet, fine grained sand, strong HCl reaction, trace shell fragments (Tamiami Formation)
										Coring Terminated at Elevation -119.1

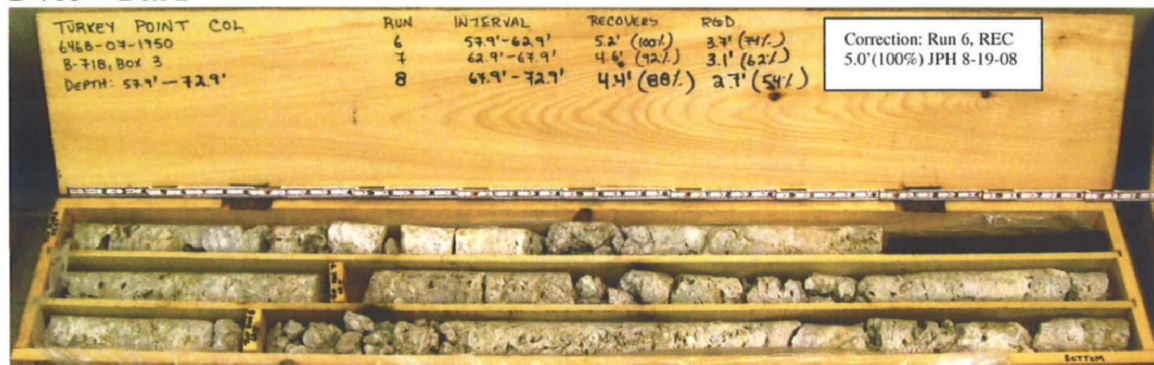
TURKEY POINT COL CORE TURKEY POINT.GPJ TURKEY POINT COL.GDT 5.30.08



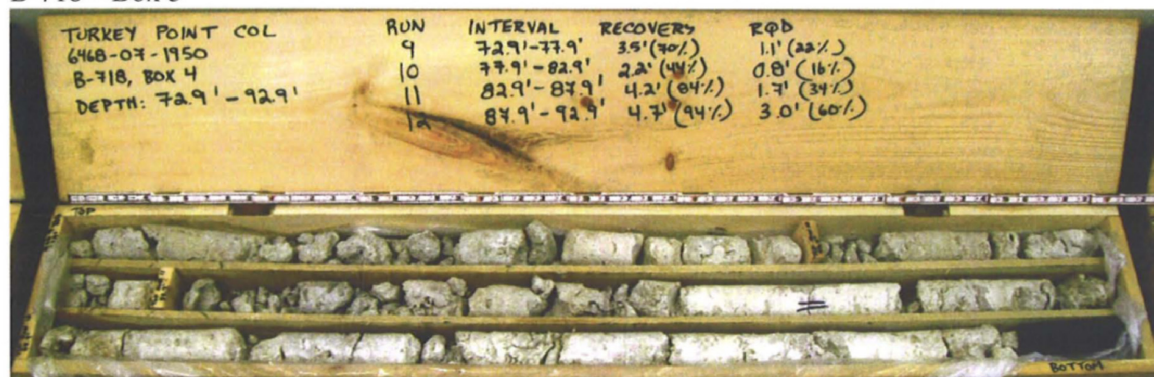
B-718 - Box 1



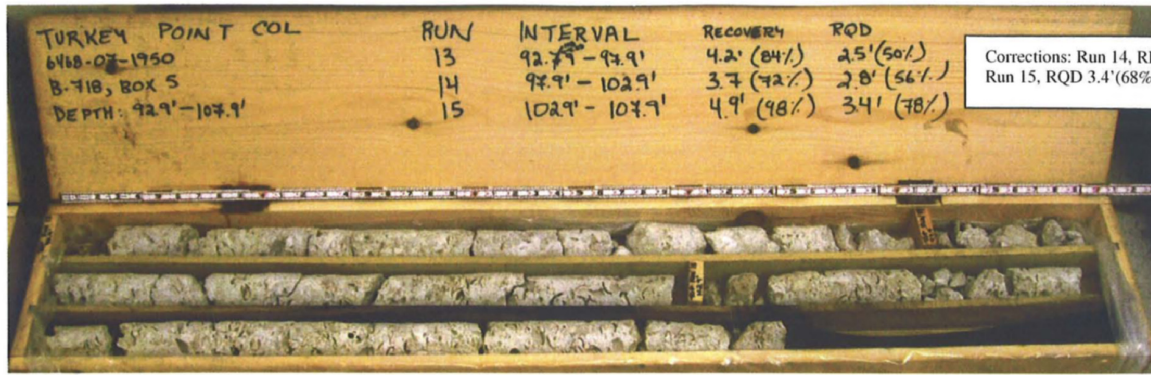
B-718 - Box 2



B-718 - Box 3



B-718 - Box 4



B-718 - Box 5



B-718 - Box 6



GEOTECHNICAL BORING LOG

Prepared By PPK Date 5-30-08

Checked By TJM Date 9-2-08

SHEET 1 OF 2

BECHTEL PROJECT NO.: 25409		MACTEC PROJECT NO.: 6468-07-1950		COUNTY: Miami-Dade		GEOLOGIST: G. Pillappa							
SITE DESCRIPTION: Turkey Point COL			DRILL MACHINE: CME-55 LC (RAL)			DRILLER: R. Banks/ J. Rosser		GROUND WATER (ft)					
BORING NO.: B-719			DRILL METHOD: Mud Rotary/ Core			SAMPLE METHODS: SPT/Core		0 HR.	NA				
GROUND ELEV.: -1.1 ft (NAVD88)			NORTHING: 397,293 US ft (NAD83/90)			EASTING: 875,791 US ft (NAD83/90)		24 HR.	NA				
TOTAL DEPTH: 126.7 ft		BORING DIAMETER: 4" to 23.6", 3" to 126.7"			CASING DEPTH: 4" to 23.6", 3" to 115.2'		HAMMER (ID): 140 lb. Auto (MEC-02)						
DATE STARTED: 4/6/08		COMPLETED: 4/8/08		CORE SIZE: HQ3		BITS USED: 2 7/8" Tricone							
ELEV. (ft)	DEPTH (ft)	BLOW COUNT			BLOWS PER FOOT					SAMP. NO.	LOG	SOIL AND ROCK DESCRIPTION	
		0.5ft	0.5ft	0.5ft	0	20	40	60	80				100
-1.1					Ground Surface								0.0
-1.1	0.0	WOH	WOH	WOH							719-1	MUCK, light brownish gray (10YR6/3), to very dark gray (10YR3/1), very soft, wet, mostly organic, strong HCl reaction Field notes do not indicate that sample 719-2 was split into separate jars LIMESTONE, boundstone, white (10YR8/1), hard, wet, fossiliferous, strong HCl reaction, oolitic (Miami Formation) 5.0ft: medium hard 7.5ft: very soft	3.0
-3.7	2.6										719-2		
-6.1	5.0	WOH	8	50/0.4							719-3		
-8.6	7.5	14	19	13							719-4		
-11.0	9.9	14	8	5							719-5		
-13.6	12.5	4	4	6							719-6		
-16.1	15.0	3	8	8							719-7		15.0ft: soft
-20.0	18.9	6	7	13							719-8		
-24.6	23.5	7	9	12							719-9		
-26.3	25.2	9	41	50/0.2							91/0.7		25.2ft: Switch sampling method to coring
-31.3	30.2										RUN-1	LIMESTONE, boundstone, white (10YR8/1), hard, indurated, trace fine grained sand, strong HCl reaction (Upper Fort Thompson Formation)	
-36.3	35.2										RUN-2	30.2ft: fossiliferous, coralline, trace vugs	
-41.3	40.2										RUN-3	35.2ft: white (10YR8/1), to light gray (10YR7/1)	
-46.3	45.2										RUN-4	40.2ft: white (10YR8/1)	
-51.3	50.2										RUN-5	45.2ft: light gray (10YR7/1) to 47.4ft	47.4
-56.3	55.2										RUN-6	LIMESTONE, boundstone, white (10YR8/1), hard, indurated, trace vugs, fossiliferous, strong HCl reaction, trace fine grained sand (Lower Fort Thompson Formation)	
-61.3	60.2										RUN-7	55.2ft: few shell molds and casts	
-66.3	65.2										RUN-8		
-71.3	70.2										RUN-9		
											RUN-10		

TURKEY POINT COL BORE TURKEY POINT COL GDT 5-30/08



BECHTEL PROJECT NO.: 25409		MACTEC PROJECT NO.: 6468-07-1950			COUNTY: Miami-Dade		GEOLOGIST: G. Pillappa						
SITE DESCRIPTION: Turkey Point COL				DRILL MACHINE: CME-55 LC (RAL)		DRILLER: R. Banks/ J. Rosser			GROUND WATER (ft)				
BORING NO.: B-719		DRILL METHOD: Mud Rotary/ Core			SAMPLE METHODS: SPT/Core			0 HR. NA					
GROUND ELEV.: -1.1 ft (NAVD88)		NORTHING: 397,293 US ft (NAD83/90)		EASTING: 875,791 US ft (NAD83/90)		24 HR. NA							
TOTAL DEPTH: 126.7 ft		BORING DIAMETER: 4" to 23.6', 3" to 126.7'			CASING DEPTH: 4" to 23.6', 3" to 115.2'		HAMMER (ID): 140 lb. Auto (MEC-02)						
DATE STARTED: 4/6/08		COMPLETED: 4/8/08		CORE SIZE: HQ3		BITS USED: 2 7/8" Tricone							
ELEV. (ft)	DEPTH (ft)	BLOW COUNT			BLOWS PER FOOT					SAMP. NO.	LOG	SOIL AND ROCK DESCRIPTION	
		0.5ft	0.5ft	0.5ft	0	20	40	60	80				100
-75.9					Continued from previous page								
-76.3	75.2												
-81.3	80.2									RUN-11		LIMESTONE, boundstone, white (10YR8/1), hard, indurated, trace vugs, fossiliferous, strong HCl reaction, trace fine grained sand (Lower Fort Thompson Formation) (continued) 75.2 to 80.2ft: possible interbedded sand layers  95.2 to 100.2ft: possible interbedded sand layers  100.2ft: little to some shell molds and casts  110.2ft: white (10YR8/1), to greenish gray (5GY6/1) 115.2ft: Switched sampling method to SPT  125.2ft: greenish gray (10Y6/1), medium dense Boring Terminated at Elevation -127.8 ft	
-86.3	85.2									RUN-12			
-91.3	90.2									RUN-13			
-96.3	95.2									RUN-14			
-101.3	100.2									RUN-15			
-106.3	105.2									RUN-16			
-111.3	110.2									RUN-17			
-116.3	110.2									RUN-18			
-116.3	115.2	11	26	14						719-10			
-126.3	125.2	5	7	8						719-11			

TURKEY POINT COL BORE, TURKEY POINT GPJ, TURKEY POINT COL.GDT: 5.3008





BECHTEL PROJECT NO.: 25409		MACTEC PROJECT NO.: 6468-07-1950		COUNTY: Miami-Dade		GEOLOGIST: G. Pillappa	
SITE DESCRIPTION: Turkey Point COL		DRILL MACHINE: CME-55 LC (RAL)		DRILLER: R. Banks/ J. Rosser		GROUND WATER (ft)	
BORING NO.: B-719		DRILL METHOD: Mud Rotary/ Core		SAMPLE METHODS: SPT/Core		0 HR. NA	
GROUND ELEV.: -1.1 ft (NAVD88)		NORTHING: 397,293 US ft (NAD83/90)		EASTING: 875,791 US ft (NAD83/90)		24 HR. NA	
TOTAL DEPTH: 126.7 ft		CASING DEPTH: 4" to 23.6', 3" to 115.2'				HAMMER (ID): 140 lb. Auto (MEC-02)	
DATE STARTED: 4/6/08		COMPLETED: 4/8/08		CORE SIZE: HQ3		CORE BARREL TYPE: Triple Tube Wireline (Split inner liners)	

ELEV. (ft)	DEPTH (ft)	RUN (ft)	DRILL RATE (Min/ft)	RUN		SAMP. NO.	STRATA		LOG	DESCRIPTION AND REMARKS
				REC (%)	RQD (%)		REC (%)	RQD (%)		
										Begin Coring @ 25.2 ft
-26.3	25.2	5.0	0.23 0.17 0.26 0.39 0.46	(0.3) 6%	(0.0) 0%	RUN-1	(13.9) 63%	(10.6) 48%		LIMESTONE, boundstone, white (10YR8/1), hard, indurated, trace fine grained sand, strong HCl reaction (Upper Fort Thompson Formation) (continued)
-31.3	30.2	5.0	1.01 1.02 0.34 0.29 0.44	(1.4) 28%	(0.4) 8%	RUN-2				30.2ft: fossiliferous, coralline, trace vugs
-36.3	35.2	5.0	0.36 0.39 0.39 0.39 0.46	(5.0) 100%	(4.7) 94%	RUN-3				35.2ft: white (10YR8/1), to light gray (10YR7/1)
-41.3	40.2	5.0	0.36 0.39 0.36 0.39 0.37	(5.0) 100%	(3.3) 66%	RUN-4				40.2ft: white (10YR8/1)
-46.3	45.2	5.0	0.52 0.41 0.46 0.42 0.41	(5.0) 100%	(4.9) 98%	RUN-5				45.2ft: light gray (10YR7/1) to 47.4ft
-51.3	50.2	5.0	0.50 0.42 0.37 0.31 0.29	(3.8) 76%	(3.1) 62%	RUN-6	(39.5) 60%	(23.6) 36%		LIMESTONE, boundstone, white (10YR8/1), hard, indurated, trace vugs, fossiliferous, strong HCl reaction, trace fine grained sand (Lower Fort Thompson Formation)
-56.3	55.2	5.0	0.29 0.32 0.31 0.40 0.34	(3.3) 66%	(1.0) 20%	RUN-7				55.2ft: few shell molds and casts
-61.3	60.2	5.0	0.42 0.38 0.30 0.21 0.14	(2.3) 46%	(0.9) 18%	RUN-8				
-66.3	65.2	5.0	0.29 0.14 0.16 0.51 1.07	(2.0) 40%	(1.2) 24%	RUN-9				
-71.3	70.2	5.0	0.55 0.55 0.49 0.55 0.43	(5.0) 100%	(4.4) 88%	RUN-10				
-76.3	75.2	5.0	0.57 0.48 0.55 0.35 0.41	(1.4) 28%	(0.6) 12%	RUN-11				75.2 to 80.2ft: possible interbedded sand layers
-81.3	80.2	5.0	0.26 0.33 0.38 0.35 0.41	(0.5) 10%	(0.0) 0%	RUN-12				
-86.3	85.2	5.0	0.42 1.01 0.41 0.46 0.35	(4.2) 84%	(2.3) 46%	RUN-13				
-91.3	90.2	5.0	0.33 0.41 0.31 0.28 0.29	(1.9) 38%	(0.4) 8%	RUN-14				
-96.3	95.2	5.0	0.28 0.26 0.22 0.21 0.29	(1.7) 34%	(0.0) 0%	RUN-15				95.2 to 100.2ft: possible interbedded sand layers
-101.3	100.2									

TURKEY POINT COL CORE TURKEY POINT GP TURKEY POINT COL GDT 53008



BECHTEL PROJECT NO.: 25409		MACTEC PROJECT NO.: 6468-07-1950		COUNTY: Miami-Dade		GEOLOGIST: G. Pillappa	
SITE DESCRIPTION: Turkey Point COL		DRILL MACHINE: CME-55 LC (RAL)		DRILLER: R. Banks/ J. Rosser		GROUND WATER (ft)	
BORING NO.: B-719		DRILL METHOD: Mud Rotary/ Core		SAMPLE METHODS: SPT/Core		0 HR. NA	
GROUND ELEV.: -1.1 ft (NAVD88)		NORTHING: 397,293 US ft (NAD83/90)		EASTING: 875,791 US ft (NAD83/90)		24 HR. NA	
TOTAL DEPTH: 126.7 ft		CASING DEPTH: 4" to 23.6', 3" to 115.2'				HAMMER (ID): 140 lb. Auto (MEC-02)	
DATE STARTED: 4/6/08		COMPLETED: 4/8/08		CORE SIZE: HQ3		CORE BARREL TYPE: Triple Tube Wireline (Split inner liners)	

ELEV. (ft)	DEPTH (ft)	RUN (ft)	DRILL RATE (Min/ft)	RUN		SAMP. NO.	STRATA		LOG	DESCRIPTION AND REMARKS
				REC (ft) %	RQD (ft) %		REC (ft) %	RQD (ft) %		
										Continued from previous page
-106.3	105.2	5.0	0.54 0.48 0.38 0.32 0.26	(4.9) 98%	(4.0) 80%	RUN-16				LIMESTONE, boundstone, white (10YR8/1), hard, indurated, trace vugs, fossiliferous, strong HCl reaction, trace fine grained sand (Lower Fort Thompson Formation) (continued) 100.2ft: little to some shell molds and casts
-111.3	110.2	5.0	0.42 0.42 0.39 0.49 0.32	(4.4) 88%	(3.0) 60%	RUN-17				
-116.3	115.2	5.0	0.52 0.41 0.54 0.15 0.14	(1.3) 26%	(0.0) 0%	RUN-18	(0.0) 0%	(NA)		110.2ft: white (10YR8/1), to greenish gray (5GY6/1) -114.1 Silty SAND (SM), light gray (10YR7/1), dense, wet, fine grained sand, strong HCl reaction, trace shell fragments (Tamiami Formation) -116.3 Coring Terminated at Elevation -116.3

TURKEY POINT COL CORE TURKEY POINT.GPJ TURKEY POINT COL.GDT 5:30 08