



BECHTEL PROJECT NO.: 25409		MACTEC PROJECT NO.: 6468-07-1950		COUNTY: Miami-Dade		GEOLOGIST: O. Rodriguez	
SITE DESCRIPTION: Turkey Point COL		DRILL MACHINE: CME-75 (CLT)		DRILLER: J. Warren/ C. Sloan/ M. Harvey		GROUND WATER (ft)	
BORING NO.: B-710(DH)		DRILL METHOD: Mud Rotary/ Core		SAMPLE METHODS: SPT/Core		0 HR. NA	
GROUND ELEV.: -1.3 ft (NAVD88)		NORTHING: 397,087 US ft (NAD83/90)		EASTING: 875,793 US ft (NAD83/90)		24 HR. NA	
TOTAL DEPTH: 250.9 ft		CASING DEPTH: 4" to 18.5', 3" to 123.0'				HAMMER (ID): 140 lb. Auto (MEC-09)	
DATE STARTED: 4/2/08		COMPLETED: 4/9/08		CORE SIZE: HQ3		CORE BARREL TYPE: Triple Tube Wireline (Split inner liners)	

ELEV. (ft)	DEPTH (ft)	RUN (ft)	DRILL RATE (Min/ft)	RUN		SAMP. NO.	STRATA		LOG	DESCRIPTION AND REMARKS
				REC (ft) %	RQD (ft) %		REC (ft) %	RQD (ft) %		
										Begin Coring @ 16.8 ft
-18.1	16.8	4.7	1.24 1.36 3.49 1.23	(2.3) 49%	(1.2) 26%	RUN-1	(3.1) 43%	(1.2) 17%		LIMESTONE, boundstone, white (2.5Y8/1), very soft, wet, strong HCl reaction, little fine grained sand, oolitic (Miami Formation) (continued) 16.8ft: white (2.5Y8/1), medium hard, moderately indurated, fossiliferous, few to little locally interconnected vugs
-22.8	21.5	4.8	1.38/0.7	(3.1) 65%	(1.7) 35%	RUN-2				
-27.6	26.3	5.0	5.22 1.56 3.11 1.28 0.48/0.8	(4.6) 92%	(3.2) 64%	RUN-3	(23.8) 97%	(20.5) 84%	-25.3	LIMESTONE, boundstone, white (2.5Y8/1), medium hard to moderately hard, moderately indurated, fossiliferous, coralline, few vugs (Upper Fort Thompson Formation) 27.0ft: loss of circulation
-32.6	31.3	5.0	0.34 0.53 1.57 2.16 2.01	(4.8) 96%	(4.5) 90%	RUN-4				31.3ft: moderately hard
-37.6	36.3	5.0	2.23 0.36 0.49 0.22 1.00	(4.9) 98%	(4.5) 90%	RUN-5				
-42.6	41.3	5.0	0.49 0.46 0.51 1.34 1.54	(5.0) 100%	(5.0) 100%	RUN-6				
-47.6	46.3	5.0	0.47 1.29 1.14 1.22 1.01	(4.8) 96%	(4.2) 84%	RUN-7				46.3ft: white (2.5Y8/1), to 46.6ft then greenish gray (10Y6/1), to 48.5ft
-52.6	51.3	5.0	0.35 0.32 0.52 1.27 1.17	(4.2) 84%	(3.2) 64%	RUN-8	(56.5) 86%	(33.5) 51%	-49.8	LIMESTONE, boundstone, white (2.5Y8/1), moderately hard, moderately indurated, fossiliferous, few vugs (Lower Fort Thompson Formation) 51.3ft: trace shell molds and casts
-57.6	56.3	5.0	0.35 0.39 0.27 0.10 1.10	(5.0) 100%	(4.9) 98%	RUN-9				56.3ft: moderately hard, indurated
-62.6	61.3	5.0	0.37 0.37 0.25 1.01 1.32	(4.5) 90%	(2.9) 58%	RUN-10				
-67.6	66.3	5.0	1.25 0.47 0.44 0.37 0.26	(3.0) 60%	(1.8) 36%	RUN-11				66.3 to 68.3ft: possible sand layer
-72.6	71.3	0.9	0.03 0.09 0.30 1.14 1.42	(0.6) 67%	(0.6) 67%	RUN-12				71.3ft: hard
-73.5	72.2	4.1	3.09/0.9	(4.0) 98%	(2.0) 49%	RUN-13				
-77.6	76.3	5.0	0.08/0.1 0.39 0.43 0.20 0.25	(4.5) 90%	(2.5) 50%	RUN-14				76.3ft: moderately hard, moderately indurated
-82.6	81.3	5.0	0.21 0.24 0.15 0.07 0.11	(4.6) 92%	(1.3) 26%	RUN-15				81.3ft: little vugs, few shell molds and casts
-87.6	86.3	5.0	0.24 0.24 0.29 0.21 0.41	(4.3) 86%	(1.6) 32%	RUN-16				86.3ft: few shell molds and casts
-92.6	91.3	5.0	0.30 1.13 0.34 0.11 0.16							

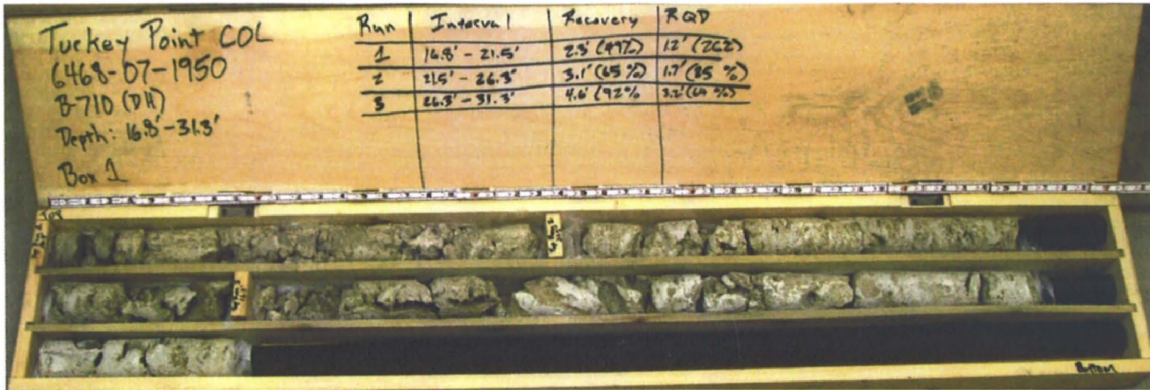
TURKEY POINT COL CORE TURKEY POINT GPJ TURKEY POINT COL.GDT. 8/18 08



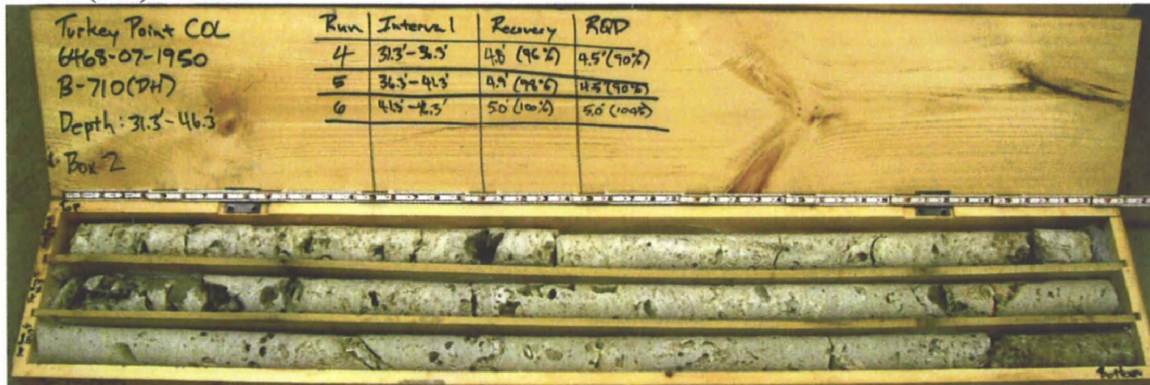
BECHTEL PROJECT NO.: 25409		MACTEC PROJECT NO.: 6468-07-1950		COUNTY: Miami-Dade		GEOLOGIST: O. Rodriguez	
SITE DESCRIPTION: Turkey Point COL		DRILL MACHINE: CME-75 (CLT)		DRILLER: J. Warren/ C. Sloan/ M. Harvey		GROUND WATER (ft)	
BORING NO.: B-710(DH)		DRILL METHOD: Mud Rotary/ Core		SAMPLE METHODS: SPT/Core		0 HR. NA	
GROUND ELEV.: -1.3 ft (NAVD88)		NORTHING: 397,087 US ft (NAD83/90)		EASTING: 875,793 US ft (NAD83/90)		24 HR. NA	
TOTAL DEPTH: 250.9 ft		CASING DEPTH: 4" to 18.5', 3" to 123.0'				HAMMER (ID): 140 lb. Auto (MEC-09)	
DATE STARTED: 4/2/08		COMPLETED: 4/9/08		CORE SIZE: HQ3		CORE BARREL TYPE: Triple Tube Wireline (Split inner liners)	

ELEV. (ft)	DEPTH (ft)	RUN (ft)	DRILL RATE (Min/ft)	RUN		SAMP. NO.	STRATA		LOG	DESCRIPTION AND REMARKS
				REC (ft) %	RQD (ft) %		REC (ft) %	RQD (ft) %		
										Continued from previous page
-97.6	96.3	5.0	0.05 0.08 0.10 0.10 0.09	(4.2) 84%	(1.7) 34%	RUN-17				91.3ft: sandy LIMESTONE, boundstone, white (2.5Y8/1), moderately hard, moderately indurated, fossiliferous, few vugs (Lower Fort Thompson Formation) (continued)
-102.6	101.3	5.0	0.30 0.06 0.06 0.24 0.16	(2.8) 56%	(0.9) 18%	RUN-18				101.3ft: medium hard, little shell molds and casts
-107.6	106.3	5.0	0.12 0.13 1.15 0.12 0.20	(5.0) 100%	(3.9) 78%	RUN-19				106.3ft: moderately hard to friable, few shell molds and casts
-112.6	111.3	5.0	0.12 0.14 0.09 0.13 0.08	(4.8) 96%	(3.2) 64%	RUN-20				
-117.6	116.3	5.0	0.27 0.33 0.14 0.05 0.06	(2.5) 50%	(0.4) 8%	RUN-21	(0.7) 10%	(NA)		POORLY GRADED SAND (SP), pale yellow (2.5Y8/3), medium dense, strong HCl reaction, trace fine to coarse gravel-sized cemented sand fragments (Tamiami Formation) 116.3ft: limestone fragments
-122.6	121.3	5.0	0.05 0.06 0.08 0.02 0.02	(0.7) 14%	(0.0) 0%	RUN-22				Coring Terminated at Elevation -122.6

TURKEY POINT CORE TURKEY POINT GP TURKEY POINT COL GDI 8/18/08



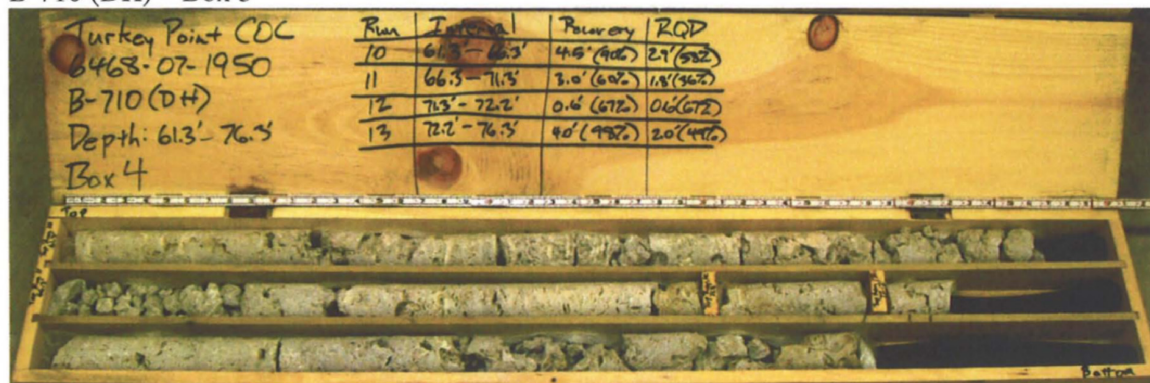
B-710 (DH) - Box 1



B-710 (DH) - Box 2



B-710 (DH) - Box 3



B-710 (DH) - Box 4



B-710 (DH) - Box 5



B-710 (DH) - Box 6



B-710 (DH) - Box 7



GEOTECHNICAL BORING LOG

Prepared By: *[Signature]* Date: 7-10-08

Checked By: *[Signature]* Date: 7-10-08

SHEET 1 OF 1

BECHTEL PROJECT NO.: 25409	MACTEC PROJECT NO.: 6468-07-1950	COUNTY: Miami-Dade	GEOLOGIST: S. Lehman
SITE DESCRIPTION: Turkey Point COL	DRILL MACHINE: CME-550 (CLT)	DRILLER: J. Warren/ C. Sloan/ M. Harvey	GROUND WATER (ft)
BORING NO.: B-710(DH)R	DRILL METHOD: Mud Rotary	SAMPLE METHODS: SPT	0 HR. NA
GROUND ELEV.: -1.3 ft (NAVD88)	NORTHING: 397,087 US ft (NAD83/90)	EASTING: 875,782 US ft (NAD83/90)	24 HR. NA
TOTAL DEPTH: 15.0 ft	BORING DIAMETER: 3" to 15"	CASING DEPTH: 0.0	HAMMER (ID): 140 lb. Auto (MEC-04)
DATE STARTED: 4/22/08	COMPLETED: 4/22/08	CORE SIZE:	BITS USED: 2 7/8" Roller Cone

ELEV. (ft)	DEPTH (ft)	BLOW COUNT			BLOWS PER FOOT					SAMP. NO.	MOI	LOG	SOIL AND ROCK DESCRIPTION
		0.5ft	0.5ft	0.5ft	0	20	40	60	80				
													Ground Surface
	0.0	WOH	WOH	WOH	0								0.0
	3.5												This boring drilled to ammend standard penetration tests performed in boring B-710(DH) from 0.0 to 15.0ft, which were invalid due to nonconforming hammer drop distance. MUCK, dark grayish brown (2.5Y4/2), to black (2.5Y2.5/1), very soft, wet, organics, strong HCl reaction LIMESTONE, boundstone, white (2.5Y8/1), very soft, moderately indurated, oolitic, strong HCl reaction (Miami Formation) 6.0ft: white (2.5Y8/1), to gray (2.5Y6/1), soft 8.5ft: white (2.5Y8/1), very soft 11.0ft: soft 13.5ft: medium hard Boring Terminated at Depth 15.0 ft
	6.0	11	9	7									
	8.5	5	10	14									
	11.0	5	5	3									
	13.5	20	8	13									
		3	8	34									

TURKEY POINT COL BORE TURKEY POINT.GPJ TURKEY POINT COL.GDT 7/10/08



BECHTEL PROJECT NO.: 25409	MACTEC PROJECT NO.: 6468-07-1950	COUNTY: Miami-Dade	GEOLOGIST: S. Lehman
SITE DESCRIPTION: Turkey Point COL	DRILL MACHINE: CME-550 (CLT)	DRILLER: J. Warren/ C. Sloan/ M. Harvey	GROUND WATER (ft) 0 HR. NA 24 HR. NA
BORING NO.: B-710(DH)R	DRILL METHOD: Mud Rotary	SAMPLE METHODS: SPT	
GROUND ELEV.: -1.3 ft (NAVD88)	NORTHING: 397,087 US ft (NAD83/90)	EASTING: 875,782 US ft (NAD83/90)	
TOTAL DEPTH: 15.0 ft	CASING DEPTH: 0.0	HAMMER (ID): 140 lb. Auto (MEC-04)	
DATE STARTED: 4/22/08	COMPLETED: 4/22/08	CORE SIZE:	CORE BARREL TYPE: NA

ELEV. (ft)	DEPTH (ft)	RUN (ft)	DRILL RATE (Min/ft)	RUN		SAMP. NO.	STRATA		L O G	DESCRIPTION AND REMARKS
				REC. (ft) %	RQD (ft) %		REC. (ft) %	RQD (ft) %		
	0.0									Ground Surface
			N=0			710(DH)R-1				This boring drilled to amend standard penetration tests performed in boring B-710(DH) from 0.0 to 15.0ft, which were invalid due to nonconforming hammer drop distance. 2.5
			N=16			710(DH)R-2				MUCK, dark grayish brown (2.5Y4/2), to black (2.5Y2.5/1), very soft, wet, organics, strong HCl reaction
			N=24			710(DH)R-3				LIMESTONE, boundstone, white (2.5Y8/1), very soft, moderately indurated, oolitic, strong HCl reaction (Miami Formation)
			N=8			710(DH)R-4				6.0ft: white (2.5Y8/1), to gray (2.5Y6/1), soft 8.5ft: white (2.5Y8/1), very soft
			N=21			710(DH)R-5				11.0ft: soft
			N=42			710(DH)R-6				13.5ft: medium hard 15.0

TURKEY POINT COL CORE TURKEY POINT.GPJ TURKEY POINT COL.GDT 7.10.08



GEOTECHNICAL BORING LOG

Prepared By 2777 Date 5-3-08

Checked By [Signature] Date 5-2-08

SHEET 1 OF 3

BECHTEL PROJECT NO.: 25409		MACTEC PROJECT NO.: 6468-07-1950		COUNTY: Miami-Dade		GEOLOGIST: R. Clark								
SITE DESCRIPTION: Turkey Point COL		DRILL MACHINE: CME-750 (Miller)		DRILLER: G.Bilbrey/P.McKorkle/J.Tucker		GROUND WATER (ft)								
BORING NO.: B-711		DRILL METHOD: Mud Rotary/ Core		SAMPLE METHODS: SPT/Core		0 HR. NA								
GROUND ELEV.: -1.1 ft (NAVD88)		NORTHING: 397,086 US ft (NAD83/90)		EASTING: 875,885 US ft (NAD83/90)		24 HR. NA								
TOTAL DEPTH: 151.7 ft		BORING DIAMETER: 4" to 30.5', 3" to 151.7'		CASING DEPTH: 4" to 30.5', 3" to 123.0'		HAMMER (ID): 140 lb. Auto (07)								
DATE STARTED: 3/4/08		COMPLETED: 3/6/08		CORE SIZE: HQ3		BITS USED: 3 7/8" Tricone								
ELEV (ft)	DEPTH (ft)	BLOW COUNT			BLOWS PER FOOT					SAMP. NO.	LOG	SOIL AND ROCK DESCRIPTION		
		0.5ft	0.5ft	0.5ft	0	20	40	60	80				100	
-1.1					Ground Surface								0.0	
-1.1	0.0	WOH	WOH	1							711-1		MUCK, grayish brown (10YR5/2), to light gray (10YR7/2), very soft, wet, strong HCl reaction, mostly organic 2.5ft: dark grayish brown (10YR4/2)	3.0
-3.6	2.5	WOR	8	11							711-2A&B			
-6.1	5.0	8	7	6							711-3		LIMESTONE, boundstone, white (5Y8/1), very soft, wet, friable, strong HCl reaction, oolitic (Miami Formation)	
-8.6	7.5	7	11	3							711-4			
-11.0	9.9	4	7	7							711-5		12.5ft: moderately hard	
-13.6	12.5	35	36	22							711-6			
-16.1	15.0	11	17	22							711-7		15.0ft: medium hard 16.5ft: loss of circulation	
-21.1	20.0	8	6	5							711-8			
-25.1	24.0	14	8	1							711-9		20.0ft: very soft 24.0ft: friable to indurated, some circulation returned	26.0
-30.0	28.9	19	29	32							711-10			
-31.6	30.5										RUN-1		LIMESTONE, boundstone, white (5Y8/1), hard, wet, strong HCl reaction, indurated, highly fragmented (Upper Fort Thompson Formation)	
-36.6	35.5										711-CS-01			
-41.6	40.5										RUN-2 711-CS-02		30.5ft: Switch sampling method to coring 30.5ft: hard, indurated, few to little vugs, fossiliferous, recrystallized calcite, coralline 30.5ft: loss of circulation	
-46.6	45.5										RUN-3			
-51.6	50.5										RUN-4		45.5ft: white (5Y8/1), to 46.7ft then gray (5Y6/1), to 48.4ft, trace vugs	48.4
-56.6	55.5										RUN-5 711-CS-03			
-61.6	60.5										RUN-6		LIMESTONE, boundstone, white (5Y8/1), hard, indurated, fossiliferous, porous, few vugs, few shell molds and casts, strong HCl reaction (Lower Fort Thompson Formation)	
-66.6	65.5										711-CS-04 RUN-7 711-CS-05 711-CS-06			
-71.6	70.5										RUN-8			
											RUN-9			

TURKEY POINT COL BORE TURKEY POINT COL GDI 5:30:08



BECHTEL PROJECT NO.: 25409		MACTEC PROJECT NO.: 6468-07-1950		COUNTY: Miami-Dade		GEOLOGIST: R. Clark								
SITE DESCRIPTION: Turkey Point COL		DRILL MACHINE: CME-750 (Miller)		DRILLER: G.Bilbrey/P.McKorkle/J.Tucker		GROUND WATER (ft)								
BORING NO.: B-711		DRILL METHOD: Mud Rotary/ Core		SAMPLE METHODS: SPT/Core		0 HR.	NA							
GROUND ELEV.: -1.1 ft (NAVD88)		NORTHING: 397,086 US ft (NAD83/90)		EASTING: 875,885 US ft (NAD83/90)		24 HR.	NA							
TOTAL DEPTH: 151.7 ft		BORING DIAMETER: 4" to 30.5', 3" to 151.7'		CASING DEPTH: 4" to 30.5', 3" to 123.0'		HAMMER (ID):140 lb. Auto (07)								
DATE STARTED: 3/4/08		COMPLETED: 3/6/08		CORE SIZE: HQ3		BITS USED: 3 7/8" Tricone								
ELEV. (ft)	DEPTH (ft)	BLOW COUNT			BLOWS PER FOOT					SAMP. NO.	MOI	LOG	SOIL AND ROCK DESCRIPTION	
		0.5ft	0.5ft	0.5ft	0	20	40	60	80					100
					Continued from previous page									
-75.9	75.5													
-76.6	75.5										RUN-10			LIMESTONE, boundstone, white (5Y8/1), hard, indurated, fossiliferous, porous, few vugs, few shell molds and casts, strong HCl reaction (Lower Fort Thompson Formation) (continued)
-81.6	80.5										RUN-11			75.5ft: hard to moderately hard, indurated to moderately indurated
-86.6	85.5										RUN-12 711-CS-07			80.5ft: white (5Y8/1), to light gray (10YR7/2), hard, indurated, trace shell molds and casts
-91.6	90.5										RUN-13			85.5ft: white (5YR8/1), moderately hard, moderately indurated, trace vugs
-96.6	95.5										RUN-14			90.5ft: white (10YR8/1), medium hard to hard, moderately indurated, no vugs
-101.6	100.5										RUN-15 711-CS-08			100.5ft: hard, indurated, little shell molds and casts
-106.6	105.5										RUN-16 711-CS-09			105.5ft: medium hard to hard
-111.6	110.5										RUN-17			110.5ft: soft to hard, indurated
-116.6	115.5										RUN-18			114.1 - 113.0 Silty SAND (SM), white (10YR8/1), wet, indurated to friable, fine grained sand, little fines (Tamiami Formation)
-121.6	120.5	5	7	6							711-11			120.5ft: Switch sampling method to SPT 120.5ft: medium dense
-131.3	130.2	3	3	5							711-12			130.2ft: greenish gray (10Y6/1), loose, fine to medium grained sand, trace indurated cemented sand
-141.3	140.2	7	7	11							711-13			140.2ft: medium dense

TURKEY POINT COL BORE TURKEY POINT GPJ TURKEY POINT COL.GDT 5:30:08



BECHTEL PROJECT NO.: 25409		MACTEC PROJECT NO.: 6468-07-1950			COUNTY: Miami-Dade		GEOLOGIST: R. Clark								
SITE DESCRIPTION: Turkey Point COL		DRILL MACHINE: CME-750 (Miller)			DRILLER: G.Bilbrey/P.McKorkle/J.Tucker		GROUND WATER (ft)								
BORING NO.: B-711		DRILL METHOD: Mud Rotary/ Core			SAMPLE METHODS: SPT/Core		0 HR. NA								
GROUND ELEV.: -1.1 ft (NAVD88)		NORTHING: 397,086 US ft (NAD83/90)			EASTING: 875,885 US ft (NAD83/90)		24 HR. NA								
TOTAL DEPTH: 151.7 ft		BORING DIAMETER: 4" to 30.5', 3" to 151.7'			CASING DEPTH: 4" to 30.5', 3" to 123.0'		HAMMER (ID): 140 lb. Auto (07)								
DATE STARTED: 3/4/08		COMPLETED: 3/6/08			CORE SIZE: HQ3		BITS USED: 3 7/8" Tricone								
ELEV. (ft)	DEPTH (ft)	BLOW COUNT			BLOWS PER FOOT					SAMP. NO.	MOI	LOG	SOIL AND ROCK DESCRIPTION		
		0.5ft	0.5ft	0.5ft	0	20	40	60	80					100	
-150.7					Continued from previous page										
-151.3	150.2	3	6	10	16					711-14			-152.8	151.7	150.2ft: fine to coarse grained sand, fine to coarse gravel Boring Terminated at Elevation -152.8 ft

TURKEY POINT COL.BORE. TURKEY POINT.GPJ TURKEY POINT COL.GDT 5/30/08



BECHTEL PROJECT NO.: 25409		MACTEC PROJECT NO.: 6468-07-1950		COUNTY: Miami-Dade		GEOLOGIST: R. Clark	
SITE DESCRIPTION: Turkey Point COL		DRILL MACHINE: CME-750 (Miller)		DRILLER: G.Bilbrey/P.McKorkle/J.Tucker		GROUND WATER (ft)	
BORING NO.: B-711		DRILL METHOD: Mud Rotary/ Core		SAMPLE METHODS: SPT/Core		0 HR. NA	
GROUND ELEV.: -1.1 ft (NAVD88)		NORTHING: 397,086 US ft (NAD83/90)		EASTING: 875,885 US ft (NAD83/90)		24 HR. NA	
TOTAL DEPTH: 151.7 ft		CASING DEPTH: 4" to 30.5', 3" to 123.0'				HAMMER (ID): 140 lb. Auto (07)	
DATE STARTED: 3/4/08		COMPLETED: 3/6/08		CORE SIZE: HQ3		CORE BARREL TYPE: Triple Tube Wireline (Split inner liners)	

ELEV. (ft)	DEPTH (ft)	RUN (ft)	DRILL RATE (Min/ft)	RUN		SAMP. NO.	STRATA		LOG	DESCRIPTION AND REMARKS
				REC (ft) %	RQD (ft) %		REC (ft) %	RQD (ft) %		
										Begin Coring @ 30.5 ft
-31.6	30.5	5.0	0:43 1:03 2:31 2:15	(5.0) 100%	(3.5) 70%	RUN-1	(16.6) 93%	(13.5) 75%		LIMESTONE, boundstone, white (5Y8/1), hard, wet, strong HCl reaction, indurated, highly fragmented (Upper Fort Thompson Formation) (continued) 30.5ft: hard, indurated, few to little vugs, fossiliferous, recrystallized calcite, coralline 30.5ft: loss of circulation
-36.6	35.5	5.0	2:08			711-CS-01				
		5.0	1:16 2:31 3:00	(4.1) 82%	(3.8) 76%	RUN-2				
-41.6	40.5	5.0	1:32 1:38			711-CS-02				
		5.0	1:19 1:57 2:45 2:47	(4.6) 92%	(4.0) 80%	RUN-3				
-46.6	45.5	5.0	2:43							45.5ft: white (5Y8/1), to 46.7ft then gray (5Y6/1), to 48.4ft, trace vugs
		5.0	2:34 1:41 1:01	(4.4) 88%	(3.3) 66%	RUN-4				
-51.6	50.5	5.0	1:45 3:58				(52.3) 81%	(37.1) 57%	-49.5	LIMESTONE, boundstone, white (5Y8/1), hard, indurated, fossiliferous, porous, few vugs, few shell molds and casts, strong HCl reaction (Lower Fort Thompson Formation)
		5.0	2:41 2:02 1:47	(5.0) 100%	(4.1) 82%	RUN-5				
-56.6	55.5	5.0	1:18 2:02			711-CS-03				
		5.0	2:35 2:38 2:12	(5.0) 100%	(5.0) 100%	RUN-6				
-61.6	60.5	5.0	0:59 1:33							
		5.0	2:51 2:12 2:17	(4.9) 98%	(4.2) 84%	RUN-7				
-66.6	65.5	5.0	2:02 1:00			711-CS-04 711-CS-05 711-CS-06				
		5.0	0:56 0:49 0:43	(3.0) 60%	(1.4) 28%	RUN-8				
-71.6	70.5	5.0	0:52 4:15							
		5.0	3:29 4:55 4:43	(4.8) 96%	(4.1) 82%	RUN-9				
-76.6	75.5	5.0	2:20 4:25							
		5.0	1:21 1:33 1:42	(3.0) 60%	(0.9) 18%	RUN-10				75.5ft: hard to moderately hard, indurated to moderately indurated
-81.6	80.5	5.0	1:28 1:49							
		5.0	1:06 0:56 1:42	(3.6) 72%	(1.0) 20%	RUN-11				80.5ft: white (5Y8/1), to light gray (10YR7/2), hard, indurated, trace shell molds and casts
-86.6	85.5	5.0	2:35 1:42							
		5.0	2:13 3:21 4:00	(4.6) 92%	(3.9) 78%	RUN-12				85.5ft: white (5YR8/1), moderately hard, moderately indurated, trace vugs
-91.6	90.5	5.0	3:36 1:28			711-CS-07				
		5.0	0:13 0:51 0:28	(3.5) 70%	(2.6) 52%	RUN-13				90.5ft: white (10YR8/1), medium hard to hard, moderately indurated, no vugs
-96.6	95.5	5.0	0:28 1:08							
		5.0	0:33 0:36 0:40	(3.2) 64%	(0.8) 16%	RUN-14				
-101.6	100.5	5.0	0:43 1:03							
		5.0	0:54 0:44 1:20	(4.9) 98%	(4.4) 88%	RUN-15				100.5ft: hard, indurated, little shell molds and casts
-106.6	105.5	5.0	1:03 1:46			711-CS-08 711-CS-09				

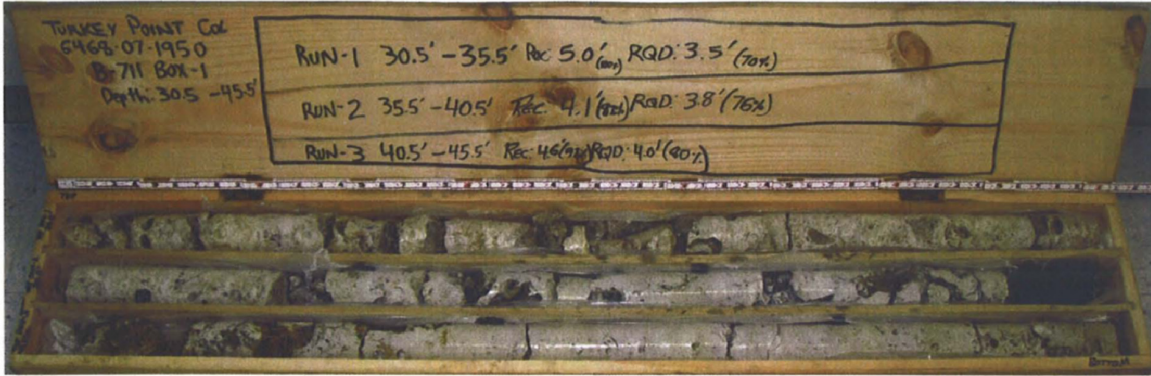
TURKEY POINT COL CORE TURKEY POINT COL GDT 5:30:08



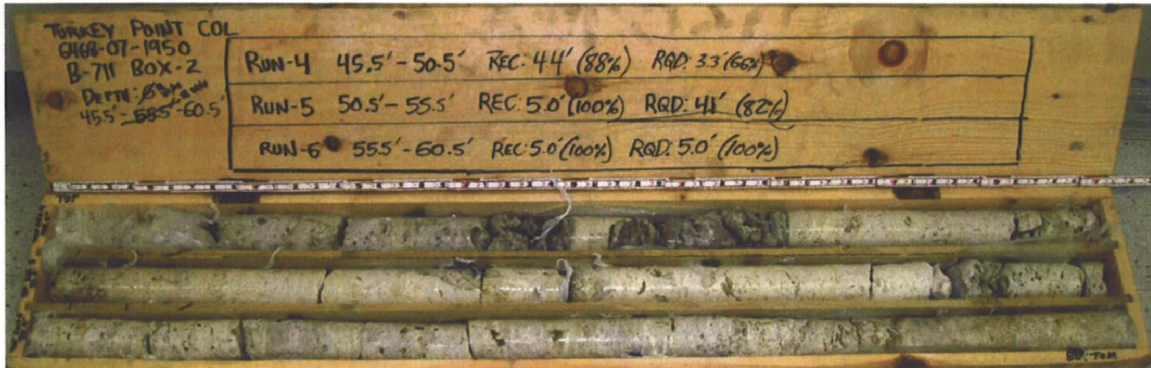
BECHTEL PROJECT NO.: 25409		MACTEC PROJECT NO.: 6468-07-1950		COUNTY: Miami-Dade		GEOLOGIST: R. Clark	
SITE DESCRIPTION: Turkey Point COL		DRILL MACHINE: CME-750 (Miller)		DRILLER: G.Bilbrey/P.McKorkle/J.Tucker		GROUND WATER (ft)	
BORING NO.: B-711		DRILL METHOD: Mud Rotary/ Core		SAMPLE METHODS: SPT/Core		0 HR.	NA
GROUND ELEV.: -1.1 ft (NAVD88)		NORTHING: 397,086 US ft (NAD83/90)		EASTING: 875,885 US ft (NAD83/90)		24 HR.	NA
TOTAL DEPTH: 151.7 ft		CASING DEPTH: 4" to 30.5', 3" to 123.0'				HAMMER (ID): 140 lb. Auto (07)	
DATE STARTED: 3/4/08		COMPLETED: 3/6/08		CORE SIZE: HQ3		CORE BARREL TYPE: Triple Tube Wireline (Split inner liners)	

ELEV. (ft)	DEPTH (ft)	RUN (ft)	DRILL RATE (Min/ft)	RUN		SAMP. NO.	STRATA		LOG	DESCRIPTION AND REMARKS
				REC (%)	RQD (%)		REC (%)	RQD (%)		
										Continued from previous page
-111.6	110.5	5.0	0:42 0:54 0:48 0:45	(4.4) 88%	(3.6) 72%	RUN-16				LIMESTONE, boundstone, white (5Y8/1), hard, indurated, fossiliferous, porous, few vugs, few shell molds and casts, strong HCl reaction (Lower Fort Thompson Formation) (continued) 105.5ft: medium hard to hard
-116.6	115.5	5.0	0:38 0:47 0:55 0:59 0:23	(2.1) 42%	(0.0) 0%	RUN-17	(1.2) 16%	(NA)		110.5ft: soft to hard, indurated Silty SAND (SM), white (10YR8/1), wet, indurated to friable, fine grained sand, little fines (Tamiami Formation)
-121.6	120.5	5.0	0:39 0:33 0:46 1:11 0:47	(0.0) 0%	(0.0) 0%	RUN-18				Coring Terminated at Elevation -121.6

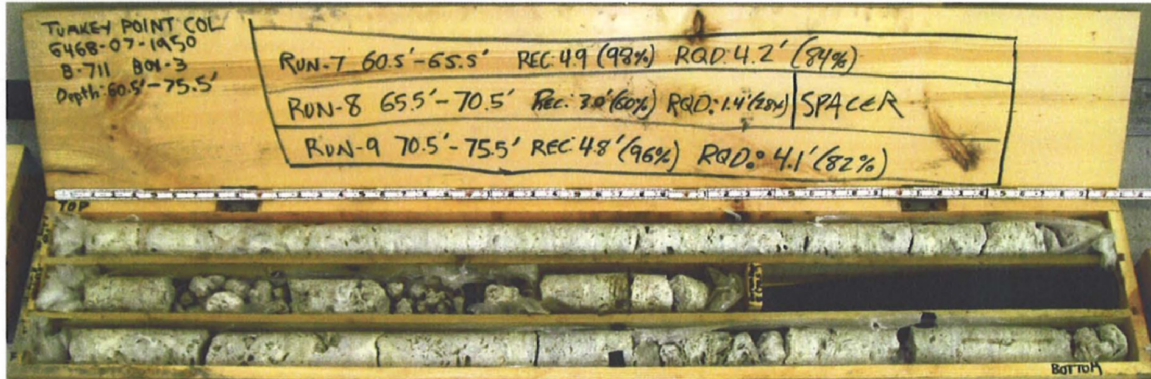
TURKEY POINT COL CORE: TURKEY POINT.GPJ TURKEY POINT COL.GDT 5/30/08



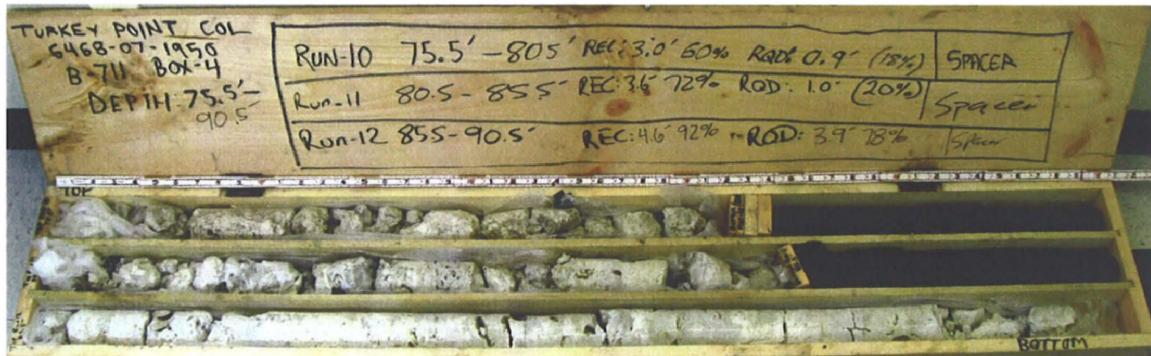
B-711 - Box 1



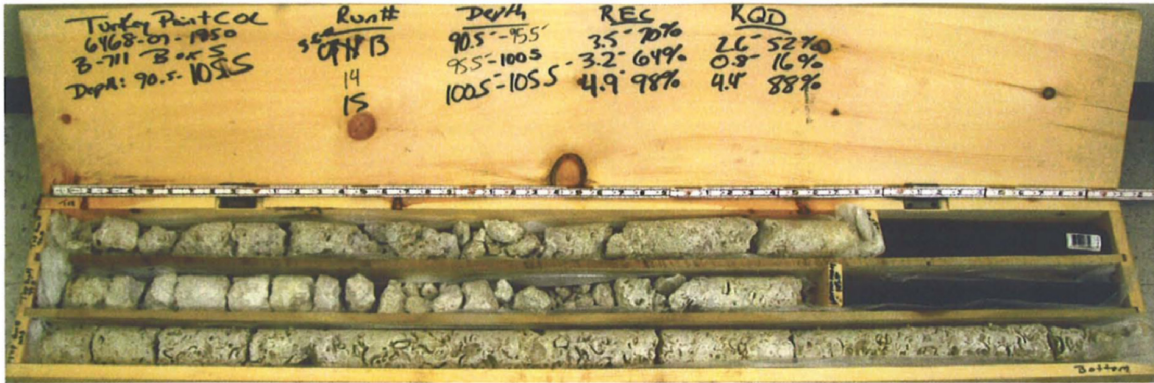
B-711 - Box 2



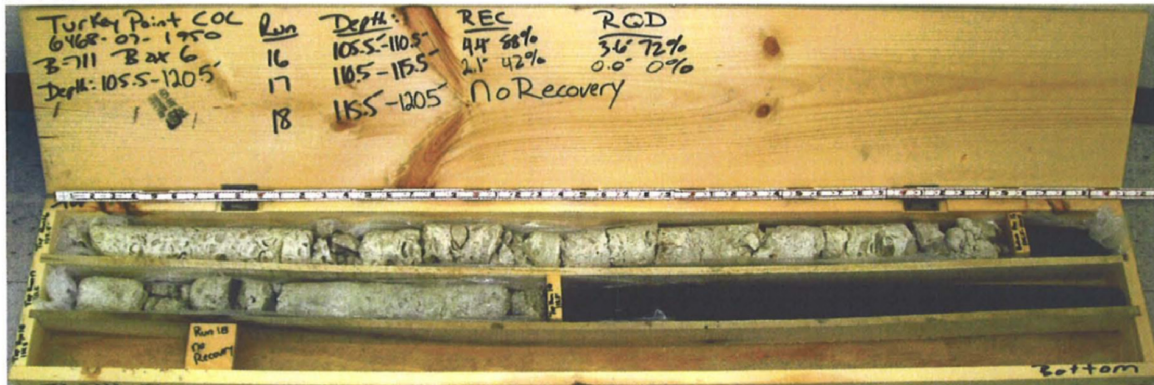
B-711 - Box 3



B-711 - Box 4



B-711 - Box 5



B-711 - Box 6



GEOTECHNICAL BORING LOG

Prepared By [Signature] Date 7-10-08

Checked By [Signature] Date 7-10-08

SHEET 1 OF 2

BECHTEL PROJECT NO.: 25409		MACTEC PROJECT NO.: 6468-07-1950		COUNTY: Miami-Dade		GEOLOGIST: G. Pillappa								
SITE DESCRIPTION: Turkey Point COL		DRILL MACHINE: CME-55 LC (RAL)		DRILLER: R. Banks/ J. Rosser		GROUND WATER (ft)								
BORING NO.: B-712		DRILL METHOD: Mud Rotary/ Core		SAMPLE METHODS: SPT/Core		0 HR.	NA							
GROUND ELEV.: -1.1 ft (NAVD88)		NORTHING: 397,082 US ft (NAD83/90)		EASTING: 876,022 US ft (NAD83/90)		24 HR.	NA							
TOTAL DEPTH: 128.3 ft		BORING DIAMETER: 4" to 28.1', 3" to 128.3'		CASING DEPTH: 4" to 28.1', 3" to 122.0'		HAMMER (ID):140 lb. Auto (MEC-02)								
DATE STARTED: 3/19/08		COMPLETED: 3/21/08		CORE SIZE: HQ3		BITS USED: 2 7/8" Tricone								
ELEV. (ft)	DEPTH (ft)	BLOW COUNT			BLOWS PER FOOT					SAMP. NO.	LOG	SOIL AND ROCK DESCRIPTION		
		0.5ft	0.5ft	0.5ft	0	20	40	60	80				100	
-1.1					Ground Surface								0.0	
-1.1	0.0	WOH	WOH	WOH							712-1		MUCK, very dark grayish brown (2.5Y3/2), very soft, moist, mostly organic, strong HCl reaction	3.1
-4.0	2.9	7	6	5							712-2		LIMESTONE, boundstone, pale yellow (5Y8/2), very soft, wet, strong HCl reaction, oolitic	
-7.1	6.0	6	4	16							712-3		6.0ft: white (5Y8/1)	
-10.1	9.0	3	4	7							712-4			
-12.5	11.4	16	46	12							712-5		11.4ft: white (10YR8/1), moderately hard	
-14.9	13.8	16	28	44							712-6			
-20.1	19.0	6	9	11							712-7		19.0ft: very soft, moist, trace shell fragments	
-25.1	24.0	6	9	4							712-8			
-30.1	29.0										712-9		LIMESTONE, boundstone, white (10YR8/1), very soft, moist, strong HCl reaction, trace shell fragments (Upper Fort Thompson Formation)	26.0
-31.6	30.5	24	27	30							RUN-1		26.5ft: loss of circulation	
-32.9	31.8										RUN-2		29.0ft: hard	
											RUN-3		30.5ft: Switch sampling method to coring	
											RUN-4		30.5ft: white, (5Y8/1), hard, indurated, strong HCl reaction, little vugs	
											RUN-5		31.8ft: fossiliferous, coralline, some vugs	
-37.9	36.8										RUN-6		36.8ft: dark greenish gray (4/10Y), few vugs	
-42.9	41.8										RUN-7			
-47.9	46.8										RUN-8		41.8ft: pale yellow (2.5Y8/4)	
-52.9	51.8										RUN-9		46.8ft: white (2.5Y8/1), to 48.4ft then gray (N5) to 50.8ft	
-57.9	56.8										RUN-10		LIMESTONE, boundstone, white (2.5Y8/1), hard, indurated, few vugs, fossiliferous, strong HCl reaction (Lower Fort Thompson Formation)	50.8
-62.9	61.8												56.8ft: white (5Y8/1)	
-67.9	66.8													
-72.9	71.8												66.8ft: white (8/N)	
													71.8ft: white (5Y8/1)	

TURKEY POINT COL BORE TURKEY POINT GPJ TURKEY POINT COL GDI 7:10:08