



BECHTEL PROJECT NO.: 25409		MACTEC PROJECT NO.: 6468-07-1950			COUNTY: Miami-Dade		GEOLOGIST: J. Liles					
SITE DESCRIPTION: Turkey Point COL		DRILL MACHINE: CME-550 (Miller)			DRILLER: R. White/ J. Dugger/ C. White		GROUND WATER (ft)					
BORING NO.: B-702		DRILL METHOD: Mud Rotary/ Core			SAMPLE METHODS: SPT/Core		0 HR.	NA				
GROUND ELEV.: -1.2 ft (NAVD88)		NORTHING: 397,018 US ft (NAD83/90)			EASTING: 875,746 US ft (NAD83/90)		24 HR.	NA				
TOTAL DEPTH: 202.5 ft		BORING DIAMETER: 4" to 25.0', 3" to 202.5'			CASING DEPTH: 4" to 25.0', 3" to 122.9'		HAMMER (ID): 140 lb. Auto (M06)					
DATE STARTED: 2/26/08		COMPLETED: 3/6/08			CORE SIZE: HQ3		BITS USED: 2 7/8" Roller Cone					
ELEV. (ft)	DEPTH (ft)	BLOW COUNT			BLOWS PER FOOT					SAMP. NO.	LOG	SOIL AND ROCK DESCRIPTION
		0.5ft	0.5ft	0.5ft	0	20	40	60	80			
-76.0					Continued from previous page							
-80.1	78.9										RUN-10	73.9ft: hard, few vugs LIMESTONE, boundstone, white (2.5Y8/1), hard, extremely indurated, fossiliferous, some vugs, strong HCl reaction (Lower Fort Thompson Formation) (continued) 78.9ft: moderately hard, trace vugs
-85.1	83.9										RUN-11	83.9ft: hard
-90.1	88.9										702-CS-03	
-95.1	93.9										RUN-12	88.9ft: moderately hard, little vugs
-100.1	98.9										RUN-13	93.9ft: moderately indurated
-105.1	103.9										RUN-14	98.9ft: indurated, some vugs, little shell molds and casts
-110.1	108.9										702-CS-04	
-115.1	113.9										RUN-15	
-120.1	118.9										RUN-16	
-120.4	119.2	1	2	1							RUN-17	113.9ft: white (5Y8/1), trace vugs, shell molds and casts
-125.4	124.2	2	2	2							RUN-18	POORLY GRADED GRAVEL with silt and gravel (SP-SM), light gray (5Y7/1), wet, fine to coarse grained sand, fine to coarse limestone gravel fragments, strong HCl reaction (Tamiami Formation) 119.2ft: Switch sampling method to SPT
-132.3	131.1	1	4	5							702-12	119.2ft: loose, trace shells, limestone fragments, trace silt
-137.3	136.1	5	7	4							702-13	POORLY GRADED SAND with silt (SP-SM), light gray (5Y7/1), very loose, wet, fine grained sand, few fines, trace limestone fragments, strong HCl reaction
-142.2	141.0	6	5	7							702-14	Silty SAND (SM), greenish gray (10YR6/1), loose, wet, fine grained sand, few fines, strong HCl reaction
-147.2	146.0	5	5	9							702-15	136.1ft: medium dense, few limestone fragments, trace shell fragments
											702-16	
											702-17	

TURKEY POINT COL BORE TURKEY POINT.GPJ TURKEY POINT COL.GDT 5.30/08



BECHTEL PROJECT NO.: 25409		MACTEC PROJECT NO.: 6468-07-1950		COUNTY: Miami-Dade		GEOLOGIST: J. Liles						
SITE DESCRIPTION: Turkey Point COL		DRILL MACHINE: CME-550 (Miller)		DRILLER: R. White/ J. Dugger/ C. White		GROUND WATER (ft)						
BORING NO.: B-702		DRILL METHOD: Mud Rotary/ Core		SAMPLE METHODS: SPT/Core		0 HR.	NA					
GROUND ELEV.: -1.2 ft (NAVD88)		NORTHING: 397,018 US ft (NAD83/90)		EASTING: 875,746 US ft (NAD83/90)		24 HR.	NA					
TOTAL DEPTH: 202.5 ft		BORING DIAMETER: 4" to 25.0', 3" to 202.5'		CASING DEPTH: 4" to 25.0', 3" to 122.9'		HAMMER (ID): 140 lb. Auto (M06)						
DATE STARTED: 2/26/08		COMPLETED: 3/6/08		CORE SIZE: HQ3		BITS USED: 2 7/8" Roller Cone						
ELEV. (ft)	DEPTH (ft)	BLOW COUNT			BLOWS PER FOOT					SAMP. NO.	LOG	SOIL AND ROCK DESCRIPTION
		0.5ft	0.5ft	0.5ft	0	20	40	60	80			
-150.8					Continued from previous page							
-152.3	151.1	4	7	11						702-18		Silty SAND (SM), greenish gray (10YR6/1), loose, wet, fine grained sand, few fines, strong HCl reaction (continued) 151.1ft: greenish gray (10Y5/1), little fines
-157.3	156.1	3	3	5						702-19		156.1ft: loose
-167.3	166.1											
		2	4	7						702-20		166.1ft: medium dense
-177.4	176.2	1	1	1						702-21		-177.4 SILT with sand (ML), greenish gray (10Y5/1), very loose, wet, fine to medium grained sand, strong HCl reaction
-190.4	189.2	1	1	4						702-22		189.2ft: loose, trace clay
-197.4	196.2	1	1	1						702-23		-192.2 Clayey SAND (SC), greenish gray (10Y5/1), very loose, wet, fine grained sand, some fines, strong HCl reaction
-202.2	201.0	5	7	10						702-24		-197.4 SILT with sand (ML), greenish gray (10Y5/1), very loose, wet, fine grained sand, strong HCl reaction
												-201.2 LEAN CLAY with sand (CL), greenish gray (10Y5/1), very stiff, wet, little fine grained sand, strong HCl reaction
												-203.7 Boring Terminated at Elevation -203.7 ft

TURKEY POINT COL BORE TURKEY POINT.GPJ TURKEY POINT COL.GDT 5/30/08



BECHTEL PROJECT NO.: 25409		MACTEC PROJECT NO.: 6468-07-1950		COUNTY: Miami-Dade	GEOLOGIST: J. Lifes
SITE DESCRIPTION: Turkey Point COL		DRILL MACHINE: CME-550 (Miller)		DRILLER: R. White/ J. Dugger/ C. White	
BORING NO.: B-702		DRILL METHOD: Mud Rotary/ Core		SAMPLE METHODS: SPT/Core	
GROUND ELEV.: -1.2 ft (NAVD88)		NORTHING: 397,018 US ft (NAD83/90)		EASTING: 875,746 US ft (NAD83/90)	
TOTAL DEPTH: 202.5 ft		CASING DEPTH: 4" to 25.0', 3" to 122.9'			HAMMER (ID): 140 lb. Auto (M06)
DATE STARTED: 2/26/08		COMPLETED: 3/6/08		CORE SIZE: HQ3	CORE BARREL TYPE: Triple Tube Wireline (Split inner liners)

ELEV. (ft)	DEPTH (ft)	RUN (ft)	DRILL RATE (Min/ft)	RUN		SAMP. NO.	STRATA		LOG	DESCRIPTION AND REMARKS
				REC (ft) %	RQD (ft) %		REC (ft) %	RQD (ft) %		
										Begin Coring @ 35.9 ft
-37.1	35.9	3.0	2:18	(3.0)	(2.8)	RUN-1	(11.5)	(10.1)		LIMESTONE, boundstone, white (2.5Y8/1), hard, extremely indurated, strong HCl reaction, coralline, few vugs (continued)
-40.1	38.9		2:29	100%	93%		100%	88%		
		5.0	2:18			RUN-2				38.9ft: trace shell fragments, fossiliferous
			2:12	(5.0)	(4.2)					
			2:25	100%	84%					
			2:03							
			1:51							
			2:22							
-45.1	43.9	5.0	2:32	(4.3)	(3.5)	RUN-3				42.0ft: loss of circulation
			2:16	86%	70%					
			1:28							
			1:50							
			0:55							
-50.1	48.9	5.0	1:49	(5.0)	(4.6)	RUN-4	(53.4)	(37.7)		LIMESTONE, boundstone, white (2.5Y8/1), hard, extremely indurated, fossiliferous, some vugs, strong HCl reaction (Lower Fort Thompson Formation)
			1:35	100%	92%		79%	56%		
			1:29							
			1:36							
			2:05							
-55.1	53.9	5.0	0:00	(2.6)	(1.3)	RUN-5				53.9ft: medium hard to moderately hard, moderately indurated to indurated, trace vugs
			0:32	52%	26%					
			1:08							
			3:35							
			1:34							
-60.1	58.9	5.0	1:19	(5.0)	(3.5)	RUN-6				58.9ft: moderately hard, moderately indurated, little vugs
			1:00	100%	70%					
			1:20							
			1:07							
			1:44							
-65.1	63.9	5.0	2:10	(2.0)	(1.6)	RUN-7				63.9ft: light gray (5Y7/1), hard, indurated, few vugs
			1:20	40%	32%					
			0:25							
			0:20							
			0:30							
-70.1	68.9	5.0	1:07	(4.7)	(4.0)	RUN-8				68.9ft: white (2.5Y8/1), moderately hard, some vugs
			2:18	94%	80%	702-CS-01				
			3:08							
			2:03			702-CS-02				
			2:15							
-75.1	73.9	5.0	2:18	(4.2)	(3.5)	RUN-9				73.9ft: hard, few vugs
			1:44	84%	70%					
			2:18							
			1:23							
			1:00							
-80.1	78.9	5.0	0:57	(4.0)	(1.7)	RUN-10				78.9ft: moderately hard, trace vugs
			0:43	80%	34%					
			0:40							
			0:45							
			0:40							
-85.1	83.9	5.0	0:30	(4.5)	(3.3)	RUN-11				83.9ft: hard
			0:31	90%	66%					
			1:30							
			1:25							
			1:38			702-CS-03				
-90.1	88.9	5.0	0:51	(4.6)	(3.0)	RUN-12				88.9ft: moderately hard, little vugs
			0:55	92%	60%					
			1:04							
			0:48							
			0:39							
-95.1	93.9	5.0	0:33	(1.5)	(0.4)	RUN-13				93.9ft: moderately indurated
			0:12	30%	8%					
			0:13							
			0:14							
			0:47							
-100.1	98.9	5.0	0:23	(4.4)	(3.9)	RUN-14				98.9ft: indurated, some vugs, little shell molds and casts
			0:33	88%	78%					
			0:35							
			0:28			702-CS-04				
			0:38							
-105.1	103.9	5.0	0:23	(4.8)	(3.3)	RUN-15				
			0:28	96%	66%					
			0:19							
			0:28							
			0:22							
-110.1	108.9	5.0	0:18	(4.4)	(3.2)	RUN-16				
			0:18							

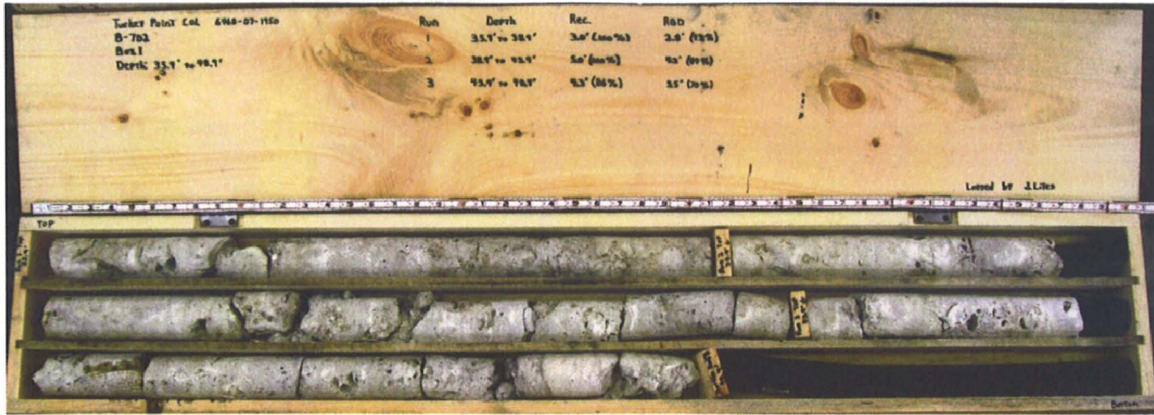
TURKEY POINT COL CORE TURKEY POINT.GPJ TURKEY POINT COL.GDT 5 30/08



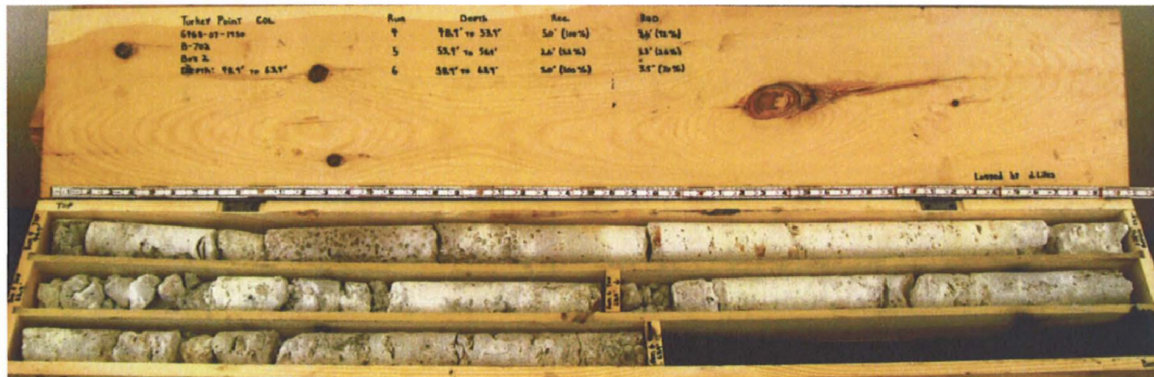
BECHTEL PROJECT NO.: 25409		MACTEC PROJECT NO.: 6468-07-1950		COUNTY: Miami-Dade	GEOLOGIST: J. Liles	
SITE DESCRIPTION: Turkey Point COL		DRILL MACHINE: CME-550 (Miller)		DRILLER: R. White/ J. Dugger/ C. White		GROUND WATER (ft) 0 HR. NA 24 HR. NA
BORING NO.: B-702		DRILL METHOD: Mud Rotary/ Core		SAMPLE METHODS: SPT/Core		
GROUND ELEV.: -1.2 ft (NAVD88)		NORTHING: 397,018 US ft (NAD83/90)		EASTING: 875,746 US ft (NAD83/90)		
TOTAL DEPTH: 202.5 ft		CASING DEPTH: 4" to 25.0', 3" to 122.9'				HAMMER (ID): 140 lb. Auto (M06)
DATE STARTED: 2/26/08		COMPLETED: 3/6/08		CORE SIZE: HQ3	CORE BARREL TYPE: Triple Tube Wireline (Split inner liners)	

ELEV. (ft)	DEPTH (ft)	RUN (ft)	DRILL RATE (Min/ft)	RUN		SAMP. NO.	STRATA		LOG	DESCRIPTION AND REMARKS
				REC (ft) %	RQD (ft) %		REC (ft) %	RQD (ft) %		
										Continued from previous page
-115.1	113.9		0:19 0:28 1:08	88%	64%					LIMESTONE, boundstone, white (2.5Y8/1), hard, extremely indurated, fossiliferous, some vugs, strong HCl reaction (Lower Fort Thompson Formation) (continued)
		5.0	1:00 0:23 0:39 0:16 0:12	(0.9) 18%	(0.0) 0%	RUN-17	(0.3) 7%	(NA)		113.9ft: white (5Y8/1), trace vugs, shell molds and casts POORLY GRADED GRAVEL with silt and gravel (SP-SM), light gray (5Y7/1), wet, fine to coarse grained sand, fine to coarse limestone gravel fragments, strong HCl reaction (Tamiami Formation)
-120.1	118.9									-115.0
-120.4	119.2	0.3	0:20/0.3	(0.3) 100%	(0.0) 0%	RUN-18				-120.4
										Coring Terminated at Elevation -120.4

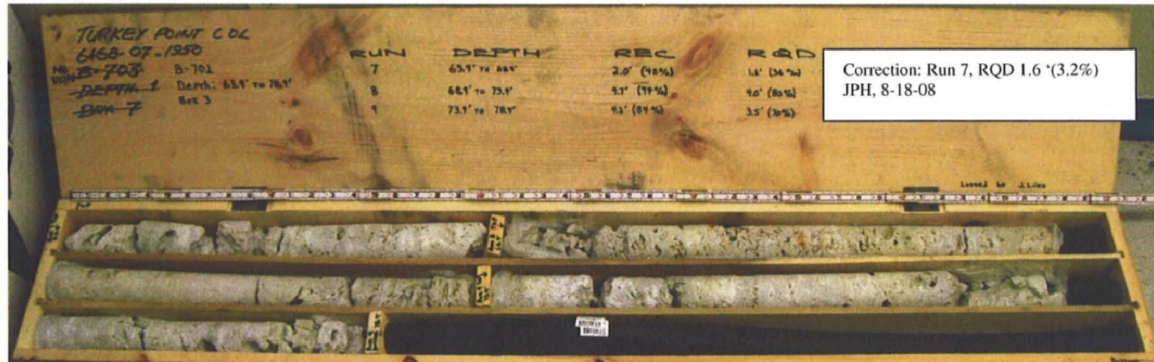
TURKEY POINT COL CORE TURKEY POINT.GPJ TURKEY POINT COL.GDT 5/30/08



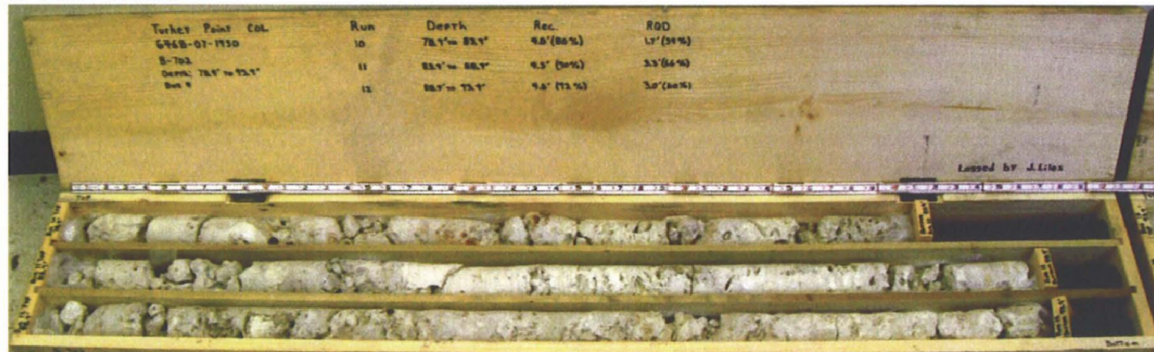
B-702 - Box 1



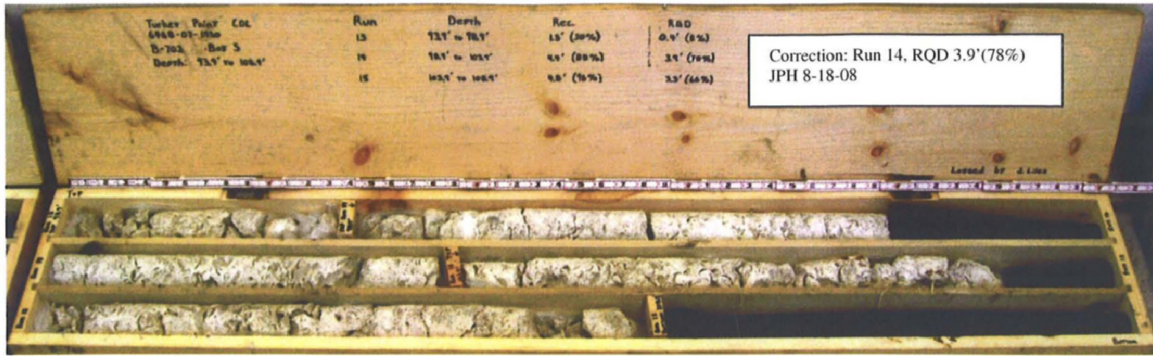
B-702 - Box 2



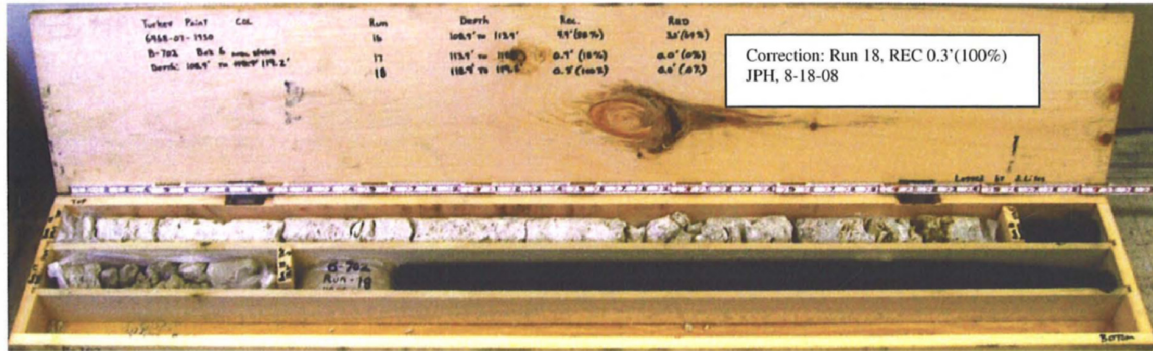
B-702 - Box 3



B-702 - Box 4



B-702 – Box 5



B-702 – Box 6



GEOTECHNICAL BORING LOG

Prepared By SPZ Date 8-19-08

Checked By SPZ Date 8/19/08

SHEET 1 OF 3

BECHTEL PROJECT NO.: 25409		MACTEC PROJECT NO.: 6468-07-1950		COUNTY: Miami-Dade		GEOLOGIST: J. Liles										
SITE DESCRIPTION: Turkey Point COL		DRILL MACHINE: CME-550 (Miller)		DRILLER: R. White/ J. Dugger		GROUND WATER (ft)										
BORING NO.: B-703		DRILL METHOD: Mud Rotary/ Core		SAMPLE METHODS: SPT/Core		0 HR. NA										
GROUND ELEV.: -1.3 ft (NAVD88)		NORTHING: 397,018 US ft (NAD83/90)		EASTING: 875,846 US ft (NAD83/90)		24 HR. NA										
TOTAL DEPTH: 150.0 ft		BORING DIAMETER: 4" to 27.9', 3" to 150.0'		CASING DEPTH: 4" to 27.9', 3" to 115.0'		HAMMER (ID): 140 lb. Auto (M06)										
DATE STARTED: 2/22/08		COMPLETED: 2/25/08		CORE SIZE: HQ3		BITS USED: 2 7/8" Roller Cone										
ELEV. (ft)	DEPTH (ft)	BLOW COUNT			BLOWS PER FOOT					SAMP. NO.	LOG	SOIL AND ROCK DESCRIPTION				
		0.5ft	0.5ft	0.5ft	0	20	40	60	80				100			
-1.3					Ground Surface											
-1.3	0.0	WOH	WOH	WOH	0						703-1		0.0	MUCK, very dark grayish brown (10YR3/2), very soft, wet, organics, strong HCl reaction		
-3.8	2.5										703-2A&B		-4.6	2.5ft: soft		
-6.5	5.2	WOH	6	17							703-3		-3.3	LIMESTONE, boundstone, white (2.5Y8/1), soft, wet, friable to moderately indurated, strong HCl reaction (Miami Formation)		
-9.1	7.8	2	7	8							703-4			5.2ft: very soft, oolitic		
-11.2	9.9	2	3	5							703-5			9.9ft: white (5Y8/1)		
-13.6	12.3	1	4	5							703-6					
-16.3	15.0	1	3	5							703-7			15.0ft: hard		
-17.5	16.2	20	22	50/0.2							RUN-1			16.2ft: Switch sampling method to coring		
-20.1	18.8										RUN-2			16.2ft: white (5Y8/1), soft, friable to moderately indurated, strong HCl reaction, locally interconnected vugs, oolitic		
-25.1	23.8										RUN-3			18.8ft: trace shell fragments		
-30.1	28.8										RUN-4					
-34.1	32.8										RUN-5			26.3	LIMESTONE, boundstone, white (5Y8/1), moderately hard, indurated, coralline, little vugs (Upper Fort Thompson Formation)	
-39.1	37.8										RUN-6				28.8ft: white (2.5Y8/1), hard, recrystallized calcite, fossiliferous	
-44.1	42.8										RUN-7				31.0ft: loss of circulation	
-49.1	47.8										RUN-8				37.8ft: white (2.5Y8/1) to 39.0ft, then bluish gray (5PB6/1) to 42.8ft	
-54.1	52.8										RUN-9				42.8	LIMESTONE, boundstone, white (2.5Y8/1), hard, indurated, few vugs, fossiliferous, trace shell molds and casts (Lower Fort Thompson Formation)
-59.1	57.8										RUN-10					
-64.1	62.8										RUN-11				52.8ft: little vugs	
-69.1	67.8										RUN-12					
-74.1	72.8										RUN-13				67.8ft: white (10YR8/1), few vugs	

TURKEY POINT COL BORE TURKEY POINT.GPJ TURKEY POINT COL.GPJ 8-18-08



BECHTEL PROJECT NO.: 25409		MACTEC PROJECT NO.: 6468-07-1950			COUNTY: Miami-Dade		GEOLOGIST: J. Liles								
SITE DESCRIPTION: Turkey Point COL				DRILL MACHINE: CME-550 (Miller)		DRILLER: R. White/ J. Dugger			GROUND WATER (ft)						
BORING NO.: B-703				DRILL METHOD: Mud Rotary/ Core		SAMPLE METHODS: SPT/Core			0 HR. NA						
GROUND ELEV.: -1.3 ft (NAVD88)		NORTHING: 397,018 US ft (NAD83/90)			EASTING: 875,846 US ft (NAD83/90)		24 HR. NA								
TOTAL DEPTH: 150.0 ft		BORING DIAMETER: 4" to 27.9', 3" to 150.0'			CASING DEPTH: 4" to 27.9', 3" to 115.0'		HAMMER (ID): 140 lb. Auto (M06)								
DATE STARTED: 2/22/08		COMPLETED: 2/25/08		CORE SIZE: HQ3		BITS USED: 2 7/8" Roller Cone									
ELEV. (ft)	DEPTH (ft)	BLOW COUNT			BLOWS PER FOOT						SAMP. NO.	LOG	SOIL AND ROCK DESCRIPTION		
		0.5ft	0.5ft	0.5ft	0	20	40	60	80	100					
-76.1					Continued from previous page										
-79.1	77.8														LIMESTONE, boundstone, white (2.5Y8/1), hard, indurated, few vugs, fossiliferous, trace shell molds and casts (Lower Fort Thompson Formation) (continued)
-84.1	82.8														
-89.1	87.8														87.8ft: moderately hard
-94.1	92.8														92.8ft: little vugs, little shell molds and casts
-99.1	97.8														97.8ft: hard
-104.1	102.8														102.8ft: few shell molds and casts
-109.1	107.8														
-115.0	113.7														
-119.9	118.6	3	4	2											113.7ft: Switch sampling method to SPT
-125.1	123.8	WOH	WOH	WOH											118.6ft: white (5Y8/1), very loose, fine to medium grained sand
-129.9	128.6	3	3	3											122.0ft: Silty SAND (SM), light olive gray (5Y6/2), loose, wet, fine to medium grained sand, strong HCl reaction
-134.8	133.5	2	4	7											127.0ft: POORLY GRADED SAND with silt (SP-SM), greenish gray (10Y5/1), medium dense, wet, fine grained sand, strong HCl reaction
-139.9	138.6	4	5	4											133.5ft: Silty SAND (SM), greenish gray (10Y5/1), loose, wet, fine to coarse grained sand, fine gravel, trace shell fragments, strong HCl reaction
-144.8	143.5	5	10	10											138.6ft: medium dense
-149.8	148.5	5	6	10											143.5ft: Silty, Clayey SAND (SC-SM), greenish gray (10Y5/1), medium dense, wet, fine grained sand, strong HCl reaction
		4	5	9											148.5ft

TURKEY POINT COL BORE TURKEY POINT GPJ TURKEY POINT COL GDT 8/18/08



BECHTEL PROJECT NO.: 25409		MACTEC PROJECT NO.: 6468-07-1950		COUNTY: Miami-Dade	GEOLOGIST: J. Liles	
SITE DESCRIPTION: Turkey Point COL		DRILL MACHINE: CME-550 (Miller)		DRILLER: R. White/ J. Dugger		GROUND WATER (ft) 0 HR. NA 24 HR. NA
BORING NO.: B-703		DRILL METHOD: Mud Rotary/ Core		SAMPLE METHODS: SPT/Core		
GROUND ELEV.: -1.3 ft (NAVD88)		NORTHING: 397,018 US ft (NAD83/90)		EASTING: 875,846 US ft (NAD83/90)		
TOTAL DEPTH: 150.0 ft		CASING DEPTH: 4" to 27.9', 3" to 115.0'			HAMMER (ID): 140 lb. Auto (M06)	
DATE STARTED: 2/22/08		COMPLETED: 2/25/08		CORE SIZE: HQ3	CORE BARREL TYPE: Triple Tube Wireline (Split inner liners)	

ELEV. (ft)	DEPTH (ft)	RUN (ft)	DRILL RATE (Min/ft)	RUN		SAMP. NO.	STRATA		LOG	DESCRIPTION AND REMARKS
				REC. (%)	RQD (%)		REC. (%)	RQD (%)		
										Begin Coring @ 16.2 ft
-17.5	16.2	2.6	4:00 2:00	(2.5) 96%	(1.8) 69%	RUN-1	(3.9) 44%	(1.8) 20%		LIMESTONE, boundstone, white (2.5Y8/1), soft, wet, friable to moderately indurated, strong HCl reaction (Miami Formation) (continued)
-20.1	18.8	5.0	1:30/0.6	(1.4) 28%	(0.0) 0%	RUN-2				16.2ft: white (5Y8/1), soft, friable to moderately indurated, strong HCl reaction, locally interconnected vugs, oolitic 18.8ft: trace shell fragments
-25.1	23.8	5.0	1:00 1:30 0:30 1:10 2:00	(3.0) 60%	(2.4) 48%	RUN-3	(16.5) 93%	(15.1) 85%		26.3 LIMESTONE, boundstone, white (5Y8/1), moderately hard, indurated, coralline, little vugs (Upper Fort Thompson Formation) 25.0
-30.1	28.8	4.0	1:30 2:30 2:30 1:30	(3.5) 88%	(2.8) 70%	RUN-4				28.8ft: white (2.5Y8/1), hard, recrystallized calcite, fossiliferous 31.0ft: loss of circulation
-34.1	32.8	5.0	1:40 2:58 2:34 3:30 4:23	(5.0) 100%	(5.0) 100%	RUN-5				37.8ft: white (2.5Y8/1) to 39.0ft, then bluish gray (5PB6/1) to 42.8ft
-39.1	37.8	5.0	3:33 3:27 3:41 3:05 4:03	(5.0) 100%	(4.9) 98%	RUN-6				44.1
-44.1	42.8	5.0	3:16 4:03 4:22 2:30 3:52	(5.0) 100%	(5.0) 100%	RUN-7	(55.9) 87%	(46.8) 73%		LIMESTONE, boundstone, white (2.5Y8/1), hard, indurated, few vugs, fossiliferous, trace shell molds and casts (Lower Fort Thompson Formation)
-49.1	47.8	5.0	1:31 2:11 2:23 1:46 2:48	(3.8) 76%	(3.4) 68%	RUN-8				52.8ft: little vugs
-54.1	52.8	5.0	2:15 3:08 3:09 3:28 2:35	(5.0) 100%	(4.1) 82%	RUN-9				
-59.1	57.8	5.0	2:13 4:19 3:00 1:25 1:11	(3.9) 78%	(3.3) 66%	RUN-10				
-64.1	62.8	5.0	2:26 1:31 3:23 2:54 3:31	(4.3) 86%	(3.3) 66%	RUN-11				
-69.1	67.8	5.0	3:08 4:02 4:28 2:32 3:11	(5.0) 100%	(4.9) 98%	RUN-12				67.8ft: white (10YR8/1), few vugs
-74.1	72.8	5.0	2:30 1:42 1:48 2:03 1:15	(4.7) 94%	(4.2) 84%	RUN-13				
-79.1	77.8	5.0	0:31 1:50 3:57 3:49 7:07	(4.3) 86%	(3.0) 60%	RUN-14				
-84.1	82.8	5.0	2:13 1:00 0:54 0:52 0:38	(4.7) 94%	(4.1) 82%	RUN-15				
-89.1	87.8	5.0	0:21 0:14 0:49	(2.3) 46%	(0.0) 0%	RUN-16				87.8ft: moderately hard

TURKEY POINT COL CORE TURKEY POINT GPJ TURKEY POINT COL GDT 8/18/08