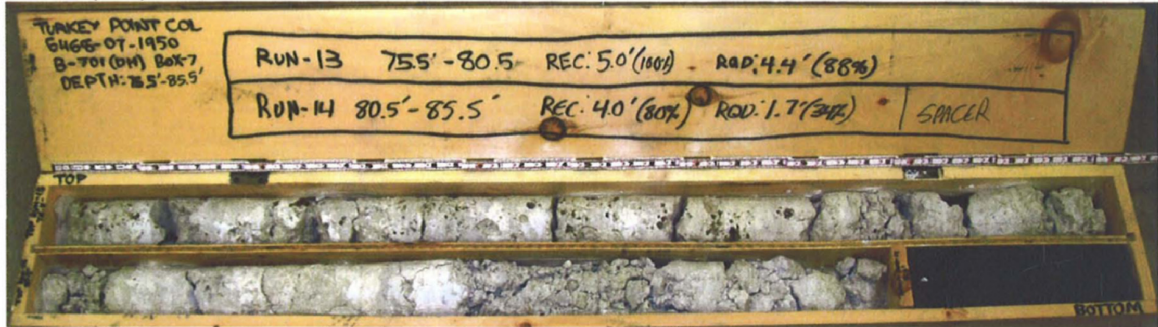
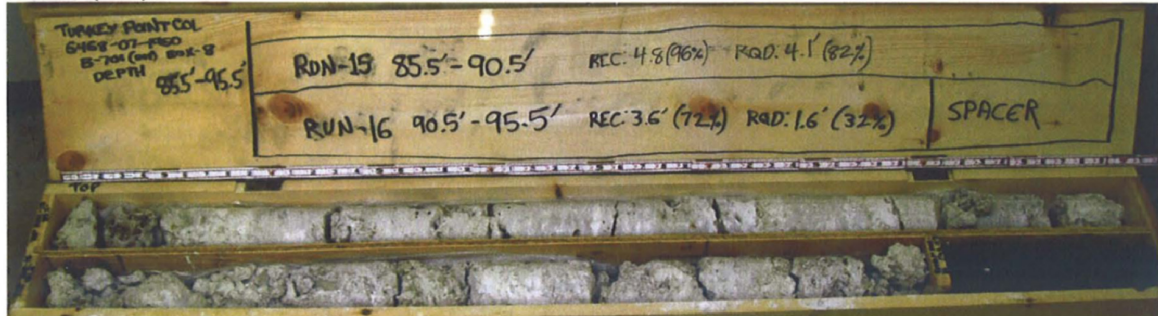




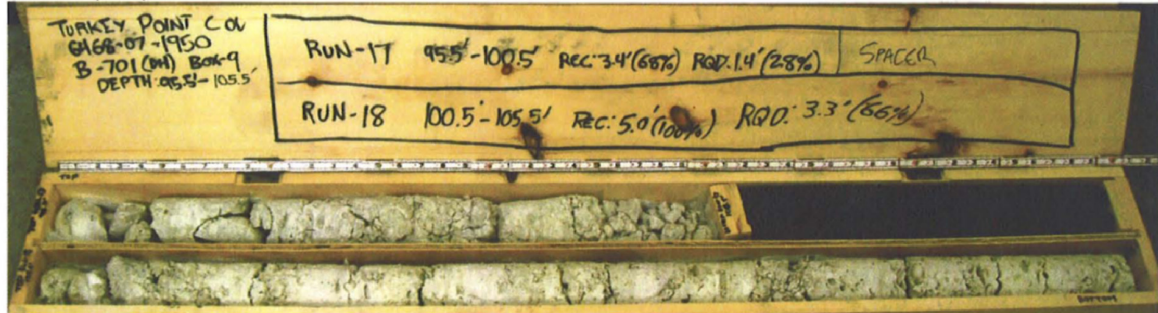
B-701 (DH) - Box 6



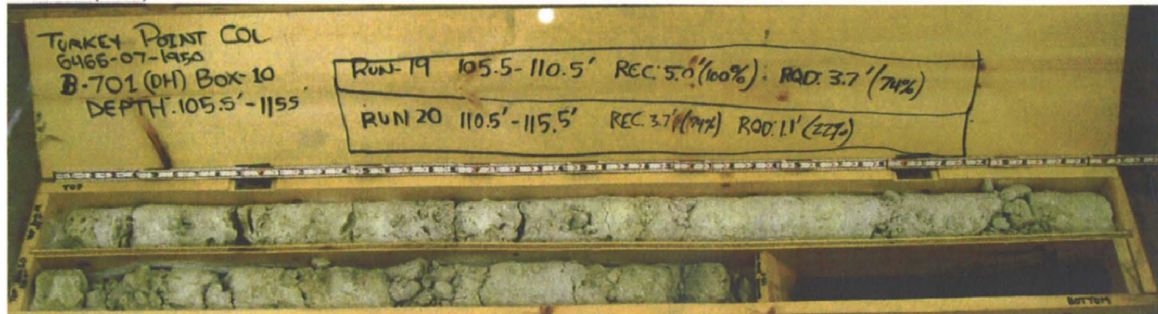
B-701 (DH) - Box 7



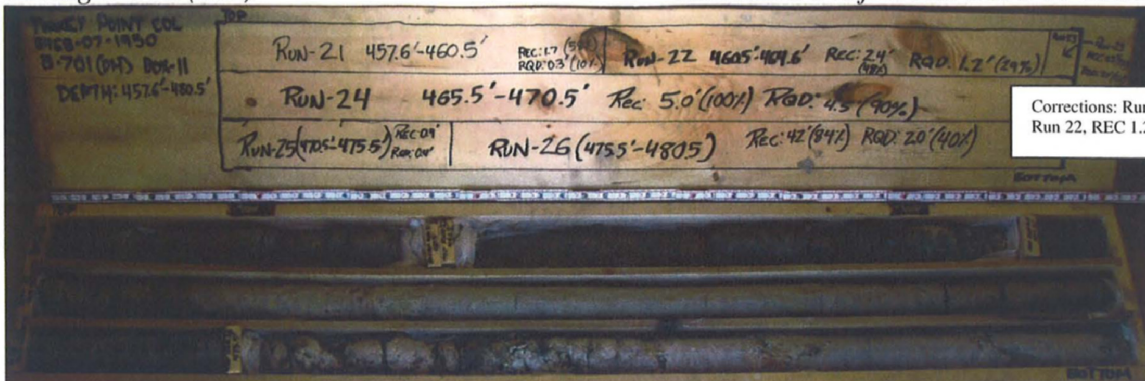
B-701 (DH) - Box 8



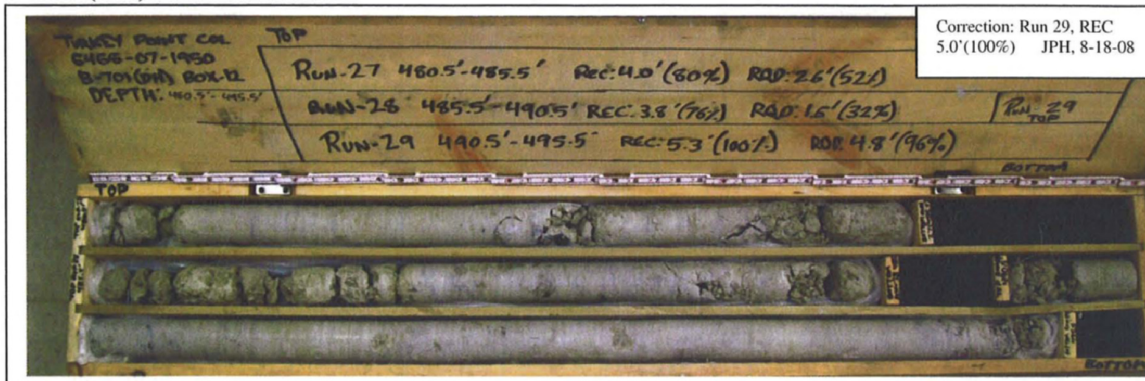
B-701 (DH) - Box 9



B-701 (DH) - Box 10



B-701 (DH) – Box 11



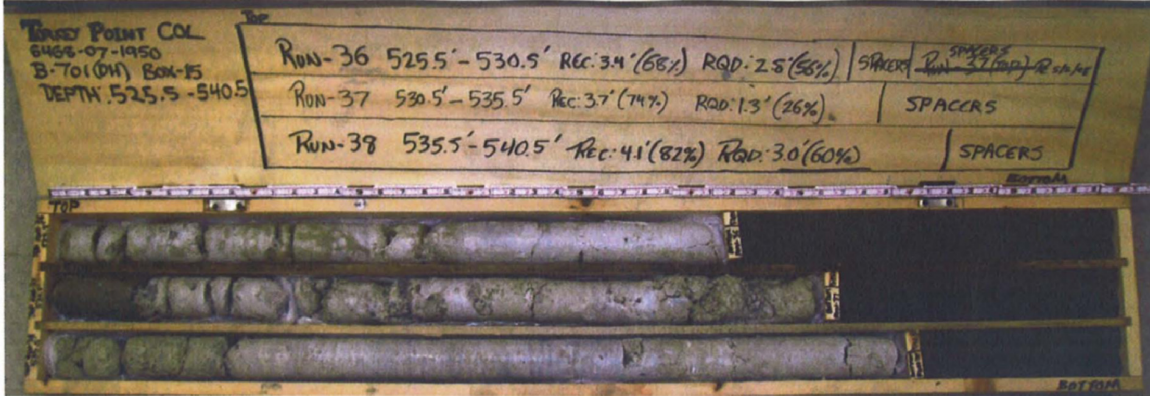
B-701 (DH) – Box 12



B-701 (DH) – Box 13



B-701 (DH) – Box 14

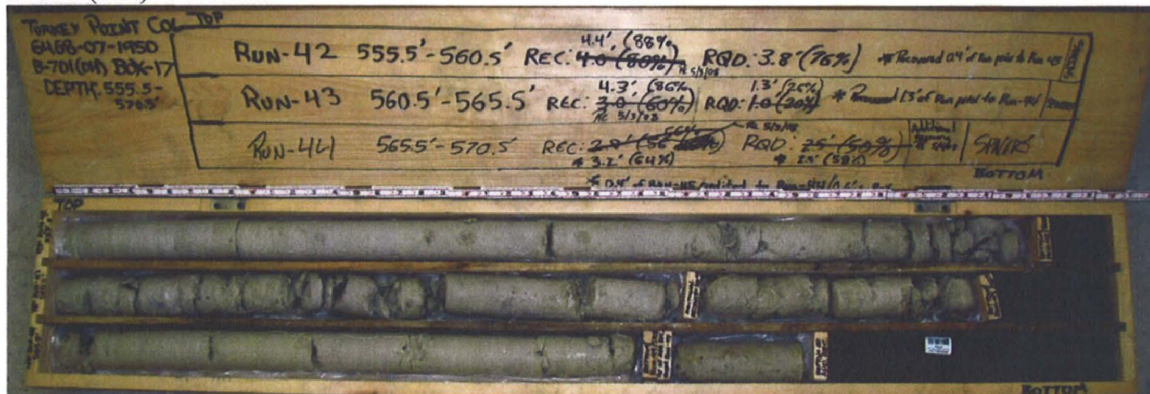


B-B-701 (DH) - Box 15

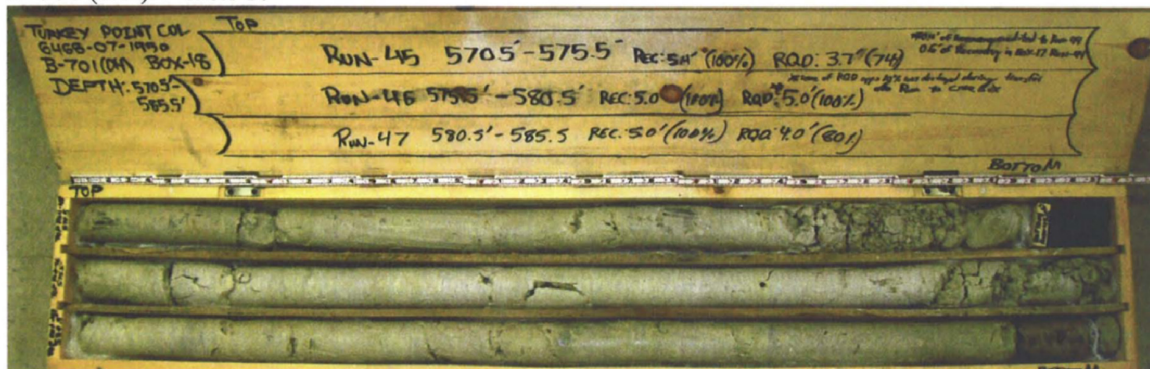


Corrections: Run 40, REC 3.7'(74%), RQD 1.6'(32%)
Run 41, REC 5.0'(100%), RQD 4.1'(8.2%)
JPH. 8-18-08

B-701 (DH) - Box 16



B-701 (DH) - Box 17



B-701 (DH) - Box 18



B-701 (DH) - Box 19



Corrections: Run 53, REC 2.0' (100%), RQD 1.6' (80%)
Run 54, REC 3.0' (100%), RQD 3.0' (100%) JPH, 8-18-08

B-701 (DH) - Box 20



| BECHTEL PROJECT NO.: 25409 | | MACTEC PROJECT NO.: 6468-07-1950 | | COUNTY: Miami-Dade | | GEOLOGIST: J. Liles | | | | | | | |
|------------------------------------|------------|--|-------|---|----------------|---------------------------------|----|----|----|-----------|-----------|---------------------------|---|
| SITE DESCRIPTION: Turkey Point COL | | DRILL MACHINE: CME-550 (Miller) | | DRILLER: R. White/ J. Dugger/ C. White | | GROUND WATER (ft) | | | | | | | |
| BORING NO.: B-702 | | DRILL METHOD: Mud Rotary/ Core | | SAMPLE METHODS: SPT/Core | | 0 HR. NA | | | | | | | |
| GROUND ELEV.: -1.2 ft (NAVD88) | | NORTHING: 397,018 US ft (NAD83/90) | | EASTING: 875,746 US ft (NAD83/90) | | 24 HR. NA | | | | | | | |
| TOTAL DEPTH: 202.5 ft | | BORING DIAMETER: 4" to 25.0', 3" to 202.5' | | CASING DEPTH: 4" to 25.0', 3" to 122.9' | | HAMMER (ID): 140 lb. Auto (M06) | | | | | | | |
| DATE STARTED: 2/26/08 | | COMPLETED: 3/6/08 | | CORE SIZE: HQ3 | | BITS USED: 2 7/8" Roller Cone | | | | | | | |
| ELEV. (ft) | DEPTH (ft) | BLOW COUNT | | | BLOWS PER FOOT | | | | | SAMP. NO. | LOG | SOIL AND ROCK DESCRIPTION | |
| | | 0.5ft | 0.5ft | 0.5ft | 0 | 20 | 40 | 60 | 80 | | | | 100 |
| -1.2 | | | | | Ground Surface | | | | | | | -1.2 | 0.0 |
| -1.2 | 0.0 | WOH | WOH | WOH | | | | | | | 702-1 | | MUCK, very dark grayish brown (10YR3/2), very soft, wet, strong HCl reaction, fibrous |
| -3.8 | 2.6 | | | | | | | | | | 702-2A&B | | |
| -6.3 | 5.1 | WOH | WOH | 2 | | | | | | | 702-3 | | Clayey SAND (SC), light brownish gray (2.5Y2), very loose, wet, fine to medium grained sand, strong HCl reaction, organics, little limestone fragments |
| -8.6 | 7.4 | 4 | 5 | 3 | | | | | | | 702-4 | | LIMESTONE, boundstone, pale yellow (2.5Y8/2), very soft, wet, strong HCl reaction, trace sand, fossiliferous, oolitic (Miami Formation) |
| -10.6 | 9.4 | 34 | 21 | 5 | | | | | | | 702-5 | | 7.4ft: soft |
| -13.5 | 12.3 | 2 | 5 | 5 | | | | | | | 702-6 | | 9.4ft: white (2.5Y8/1), very soft |
| -15.9 | 14.7 | 8 | 33 | 20 | | | | | | | 702-7 | | 12.3ft: moderately hard |
| | | 2 | 14 | 12 | | | | | | | | | 14.7ft: soft, trace clay |
| -22.2 | 21.0 | 1 | 1 | 3 | | | | | | | 702-8 | | 21.0ft: very soft |
| -27.2 | 26.0 | 2 | 10 | 18 | | | | | | | 702-9 | | LIMESTONE, boundstone, white (2.5Y8/1), soft, wet, strong HCl reaction, trace sand (Upper Fort Thompson Formation) |
| -32.2 | 31.0 | 5 | 10 | 11 | | | | | | | 702-10 | | POORLY GRADED SAND with silt (SP-SM), light gray (5Y7/2), medium dense, wet, fine to coarse grained sand, fine gravel, few fines, strong HCl reaction, transitions to limestone at 35.8ft |
| -36.0 | 34.8 | 6 | 13 | 50/0.1 | | | | | | | 702-11 | | Field notes do not indicate that 702-11 was split into separate jars |
| -37.1 | 35.9 | | | | | | | | | | RUN-1 | | 35.9ft: Switch sample method to coring |
| -40.1 | 38.9 | | | | | | | | | | RUN-2 | | LIMESTONE, boundstone, white (2.5Y8/1), hard, extremely indurated, strong HCl reaction, coralline, few vugs |
| -45.1 | 43.9 | | | | | | | | | | RUN-3 | | 38.9ft: trace shell fragments, fossiliferous |
| -50.1 | 48.9 | | | | | | | | | | RUN-4 | | 42.0ft: loss of circulation |
| -55.1 | 53.9 | | | | | | | | | | RUN-5 | | 43.9ft: light gray (10YR7/1) to 47.4ft |
| -60.1 | 58.9 | | | | | | | | | | RUN-6 | | 47.4ft: LIMESTONE, boundstone, white (2.5Y8/1), hard, extremely indurated, fossiliferous, some vugs, strong HCl reaction (Lower Fort Thompson Formation) |
| -65.1 | 63.9 | | | | | | | | | | RUN-7 | | 53.9ft: medium hard to moderately hard, moderately indurated to indurated, trace vugs |
| -70.1 | 68.9 | | | | | | | | | | RUN-8 | | 54.0 to 55.0ft: soft zone |
| -75.1 | 73.9 | | | | | | | | | | RUN-9 | | 58.9ft: moderately hard, moderately indurated, little vugs |
| | | | | | | | | | | | 702-CS-01 | | 63.9ft: light gray (5Y7/1), hard, indurated, few vugs |
| | | | | | | | | | | | 702-CS-02 | | 65.0 to 69.0ft: soft zone |
| | | | | | | | | | | | RUN-9 | | 68.9ft: white (2.5Y8/1), moderately hard, some vugs |

TURKEY POINT COL BORE TURKEY POINT GPJ TURKEY POINT COL GDT 5/30/08