


LEGEND

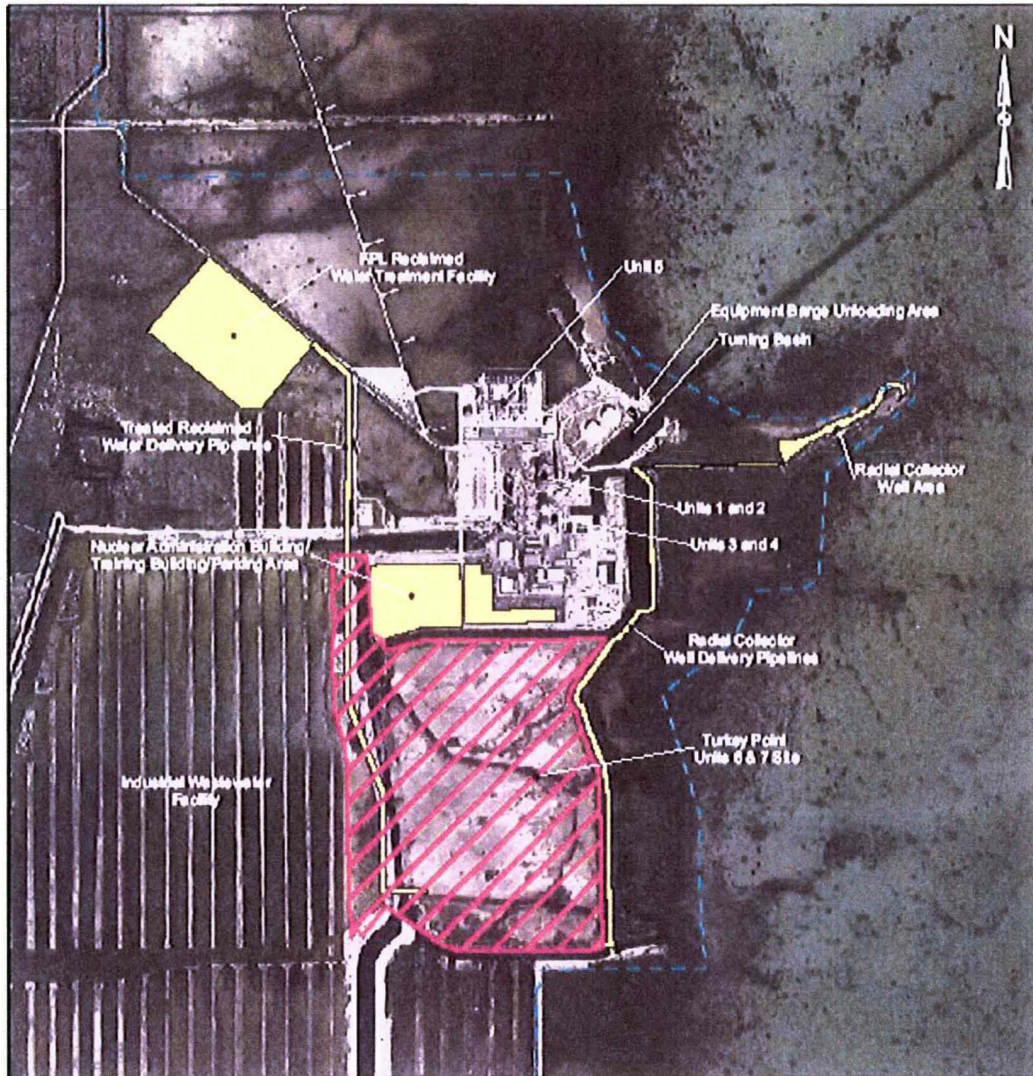
- ★ Turkey Point Units 6 & 7
- Turkey Point Plant Property
- Municipal Boundaries

REFERENCES

* Local City Boundaries: Municipal Elections, Major Roads, Miami-Dade County GIS, 2016



PROJECT	TURKEY POINT UNITS 6 & 7 PROJECT	
TITLE	LOCATION OF TURKEY POINT PLANT	
	FILE NO.	00-0704-004
	REV.	0
	EFFECTIVE DATE	06/20/09
		FIGURE 1




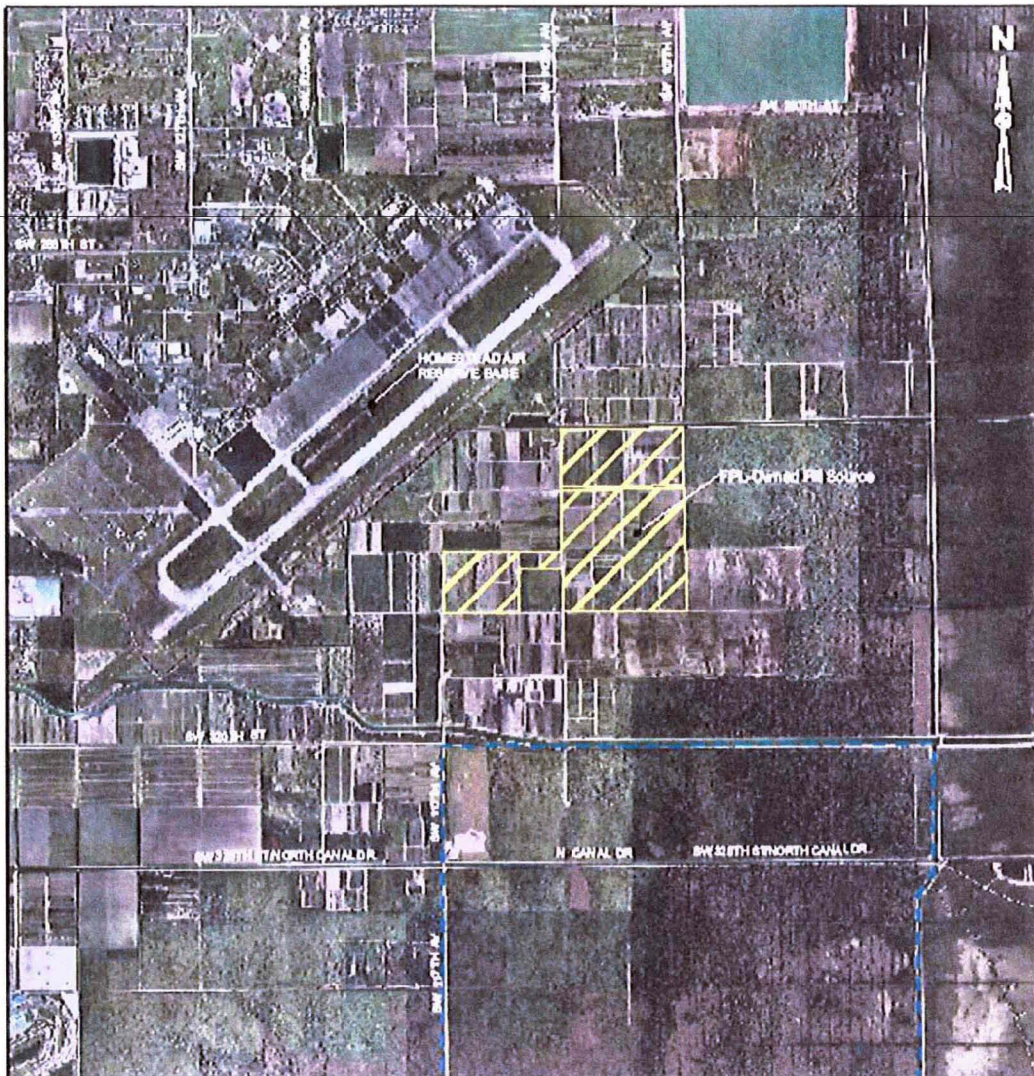
LEGEND

- Turkey Point Plant Property
- Turkey Point Units 6 & 7 Site
- Associated Non-Linear Facilities

REFERENCES

* Turkey Merit/Dash County 2007

PROJECT	TURKEY POINT UNITS 6 & 7 PROJECT	
TITLE	SITE AND ASSOCIATED NON-LINEAR FACILITIES ON TURKEY POINT PLANT PROPERTY	
	FILE NO. 000704008	FIGURE 2
	REV. 0	
	EFFECTIVE DATE 08/2008	




LEGEND

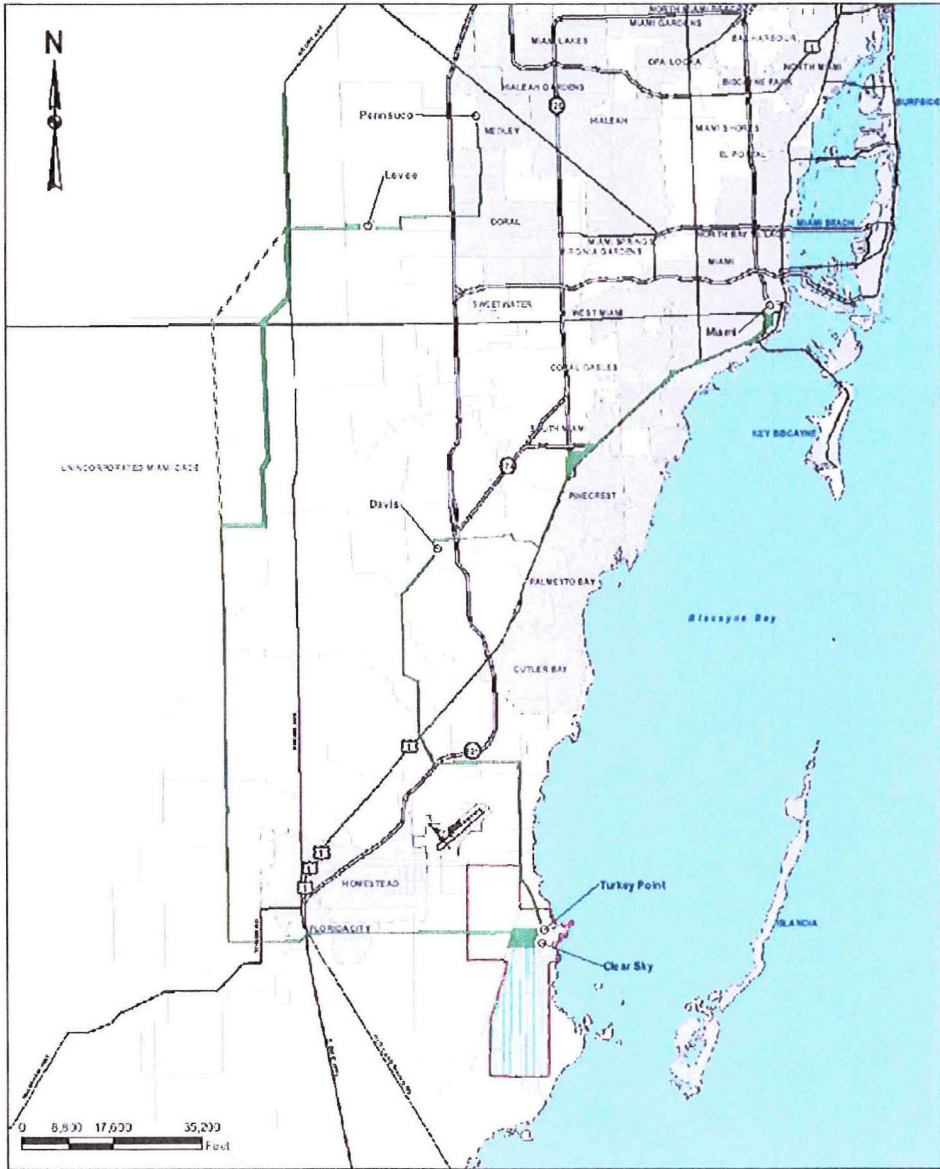
- Turkey Point Plant Property
- Associated Non-Linear Facilities



REFERENCES

1. Ingey MarshOnis County 2007

PROJECT	TURKEY POINT UNITS 6 & 7 PROJECT	
TRF	ASSOCIATED NON-LINEAR FACILITIES FPL-OWNED FILL SOURCE	
	FILED: 06/22/2016	FIGURE 3
	REV: 0	
	PLACED: 06/22/16	



LEGEND

- FPL Substations
- ▬ Associated Linear Facilities - Transmission Lines and Comadors
- ▬ Secondary Comador
- ▭ Turkey Point Plant Property

REFERENCES

1. Map of Dade County, Florida, Metropolitan Dade County, 1978

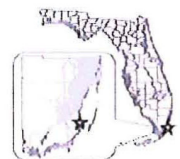
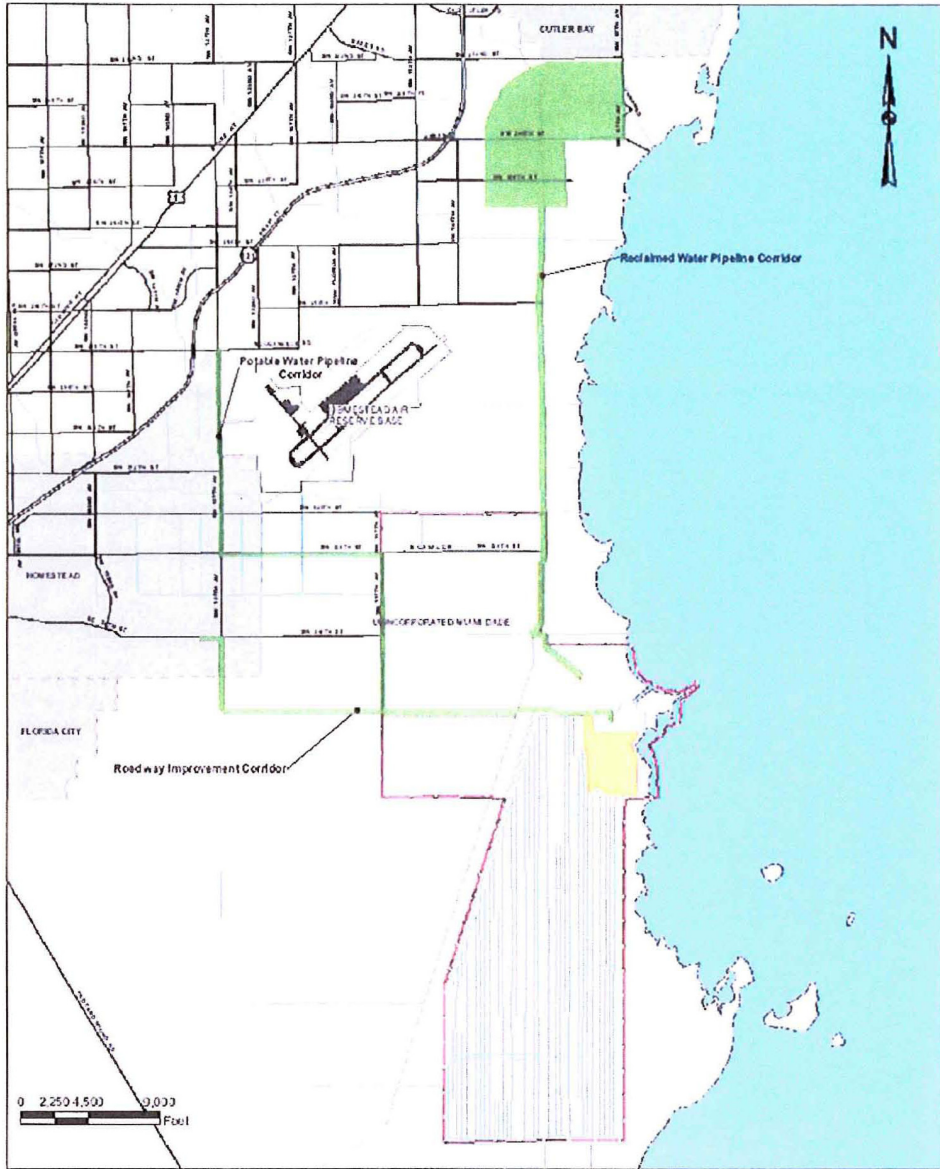


FIGURE
4

ASSOCIATED LINEAR FACILITIES
TRANSMISSION

TURKEY POINT UNITS 6 & 7
PROJECT





- LEGEND**
- Turkey Point Units 6 & 7 Site
 - Associated Linear Facilities - Corridor
 - Turkey Point Plant Property

REFERENCES

1. Map of Broward County & Hollywood County, Florida, March 1998

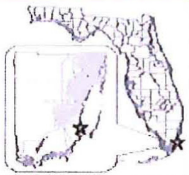


FIGURE 5	<p>TITLE</p> <p>ASSOCIATED LINEAR FACILITIES: RECLAIMED WATER PIPELINES, ROADWAY IMPROVEMENTS, & POTABLE WATER PIPELINES</p>	<p>PROJECT</p> <p>TURKEY POINT UNITS 6 & 7 PROJECT</p>
--------------------	--	--



SEMINOLE TRIBE OF FLORIDA
TRIBAL HISTORIC PRESERVATION OFFICE

TRIBAL HISTORIC
PRESERVATION OFFICE
SEMINOLE TRIBE OF FLORIDA
AH-TAH-THI-KI MUSEUM
HC-61, BOX 21A
CLEWISTON, FL 33440
PHONE: (863) 983-6549
FAX: (863) 902-1117



TRIBAL OFFICERS
CHAIRMAN
MITCHELL CYPRESS
VICE CHAIRMAN
RICHARD BOWERS JR.
SECRETARY
PRISCILLA D. SAYEN
TREASURER
MICHAEL D. TIGER

Florida Power and Light Company
700 Universe Boulevard
Juno Beach, FL 33408-2683
Attn: Matthew Raffenberg

THPO #: 005028

December 22, 2009

Subject: Proposed Turkey Point Units 6 & On-site Project Facilities, Miami-Dade County, Florida

To Whom It May Concern:

The Seminole Tribe of Florida Tribal Historic Preservation Office (STOF-THPO) has received the **Florida Power and Light Company's** correspondence concerning the aforementioned project. The STOF-THPO has no objection to your findings at this time. However, the STOF-THPO would like to be informed if cultural resources that are potentially ancestral or historically relevant to the Seminole Tribe of Florida are inadvertently discovered during the construction process. We thank you for the opportunity to review the information that has been sent to date regarding this project. Please reference to **THPO-005028** for any related issues.

We look forward to working with you in the future.

Sincerely,

Direct routine inquiries to:

Willard Steele,
Tribal Historic Preservation Officer
Seminole Tribe of Florida

Anne Mullins
Compliance Review Supervisor
annemullins@semtribe.com