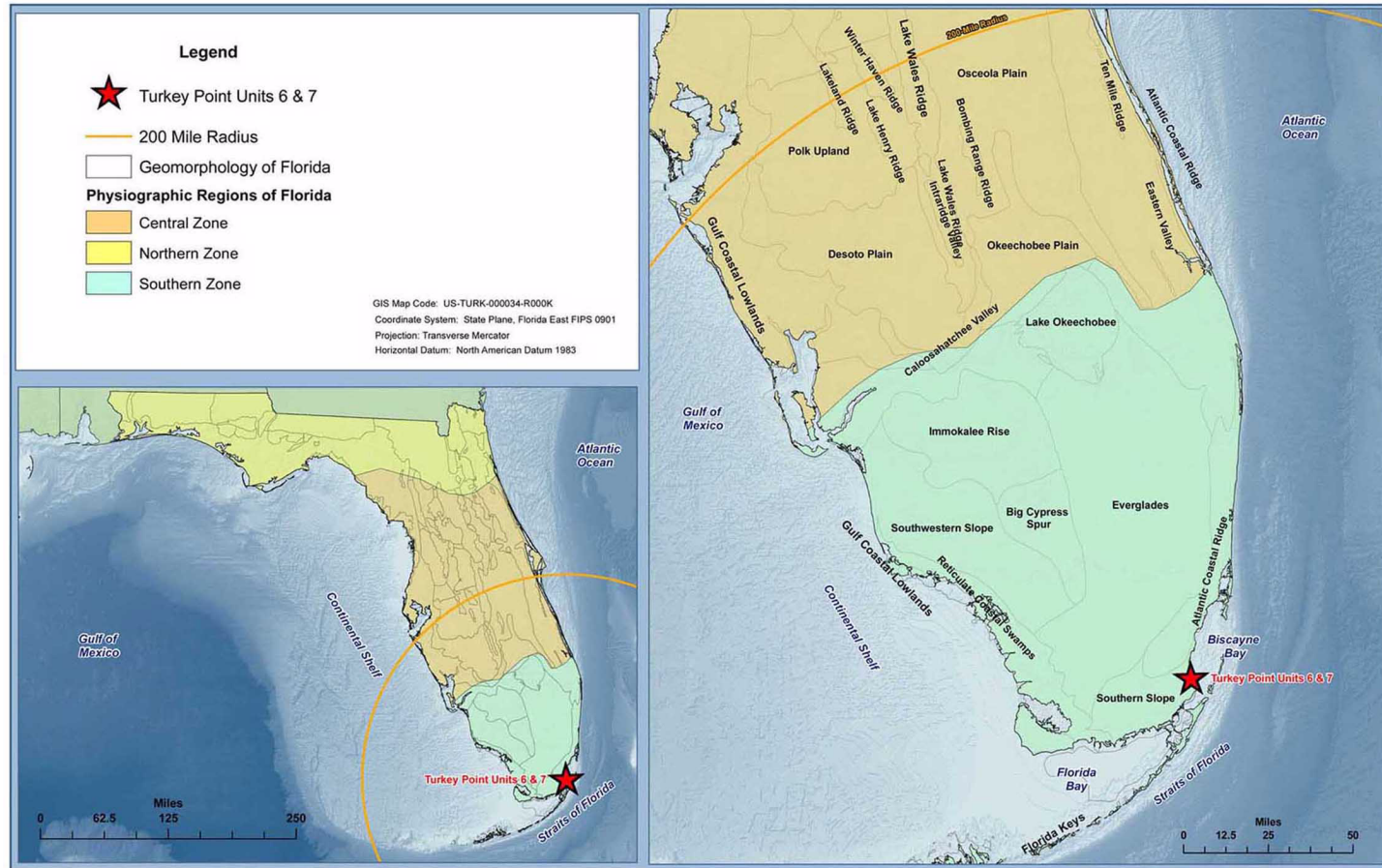


Turkey Point Units 6 & 7
COL Application
Part 2 — FSAR

PTN COL 2.4-4

Figure 2.4.12-201 Physiographic Features



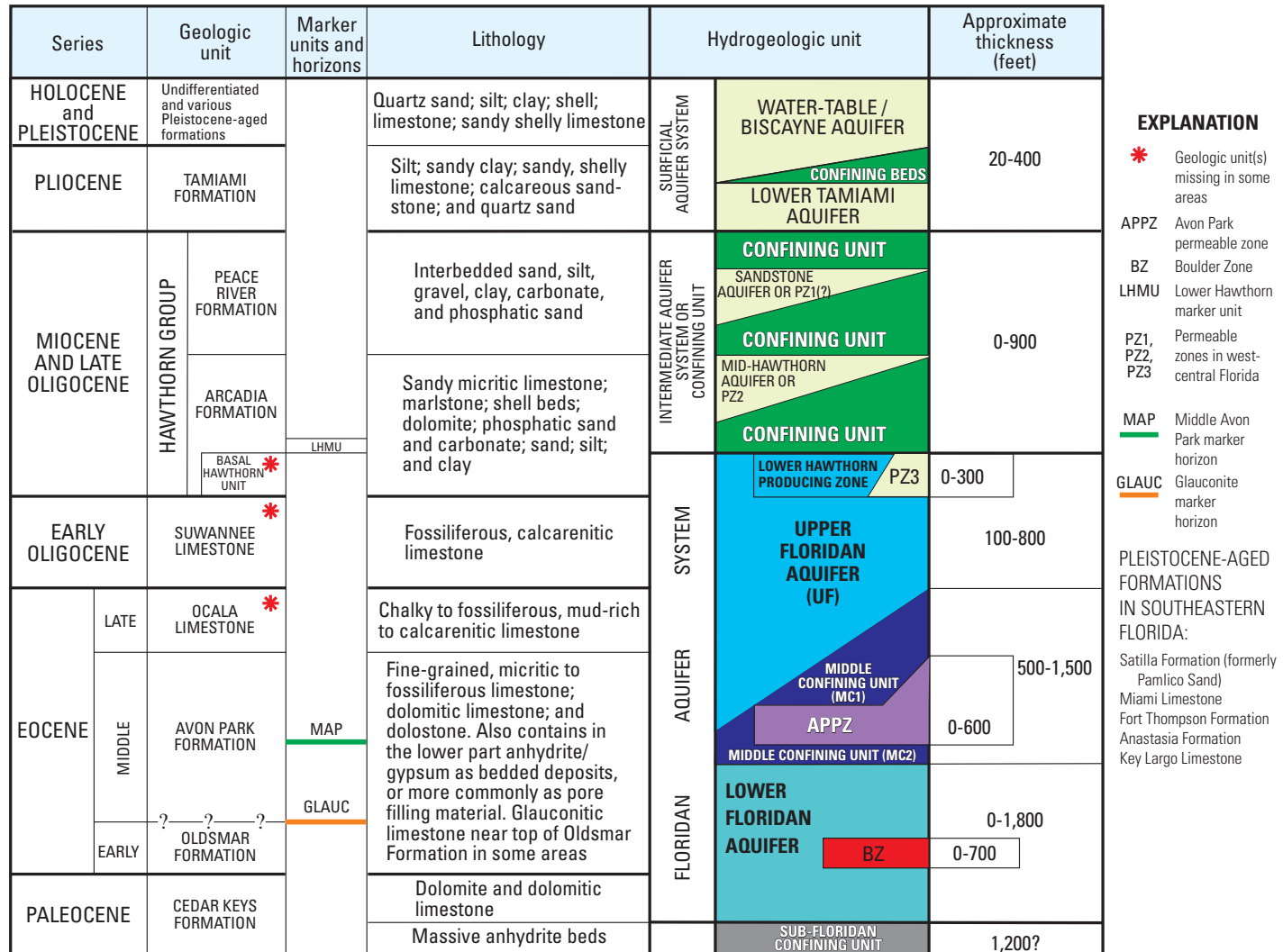
Modified from [References 201](#) and [202](#)

Note: Florida is within the Atlantic Coastal Plan physiographic province.

Turkey Point Units 6 & 7
COL Application
Part 2 — FSAR

PTN COL 2.4-4

Figure 2.4.12-202 Regional Generalized Hydrostratigraphic Column

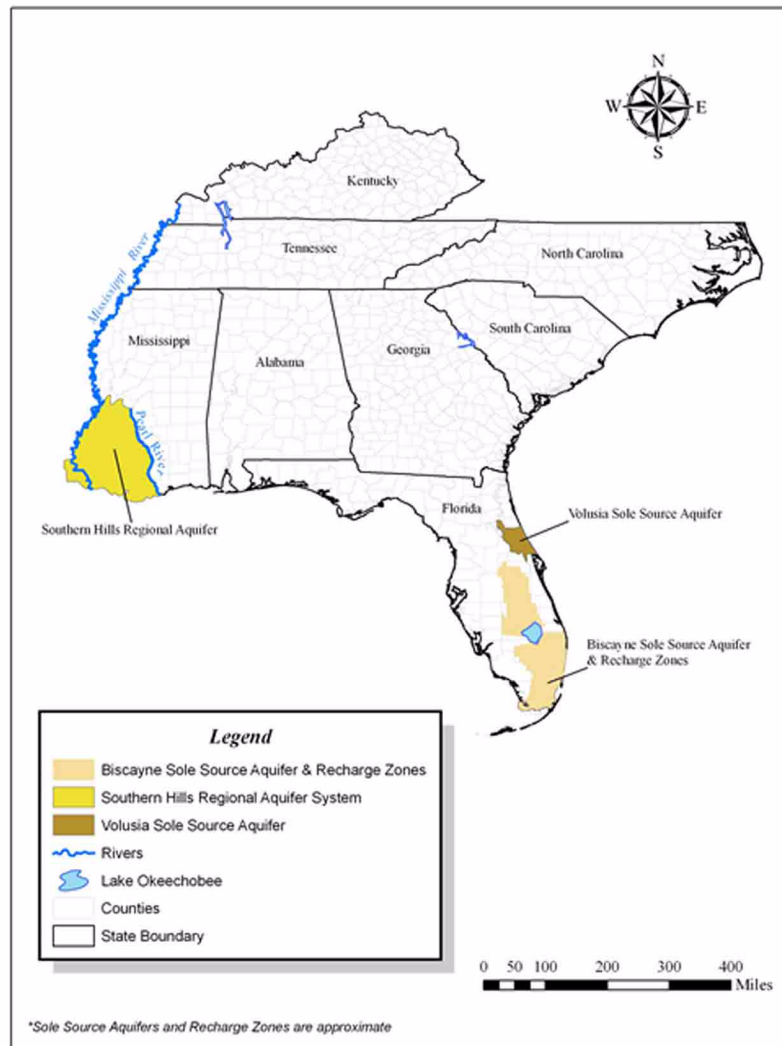


Source: Reference 206

Turkey Point Units 6 & 7
COL Application
Part 2 — FSAR

PTN COL 2.4-4

Figure 2.4.12-203 Approximate Boundaries of EPA Region 4 Sole Source Aquifers



Source: Reference 205

Turkey Point Units 6 & 7
COL Application
Part 2 — FSAR

PTN COL 2.4-4

Figure 2.4.12-204 Site Hydrostatigraphic Column

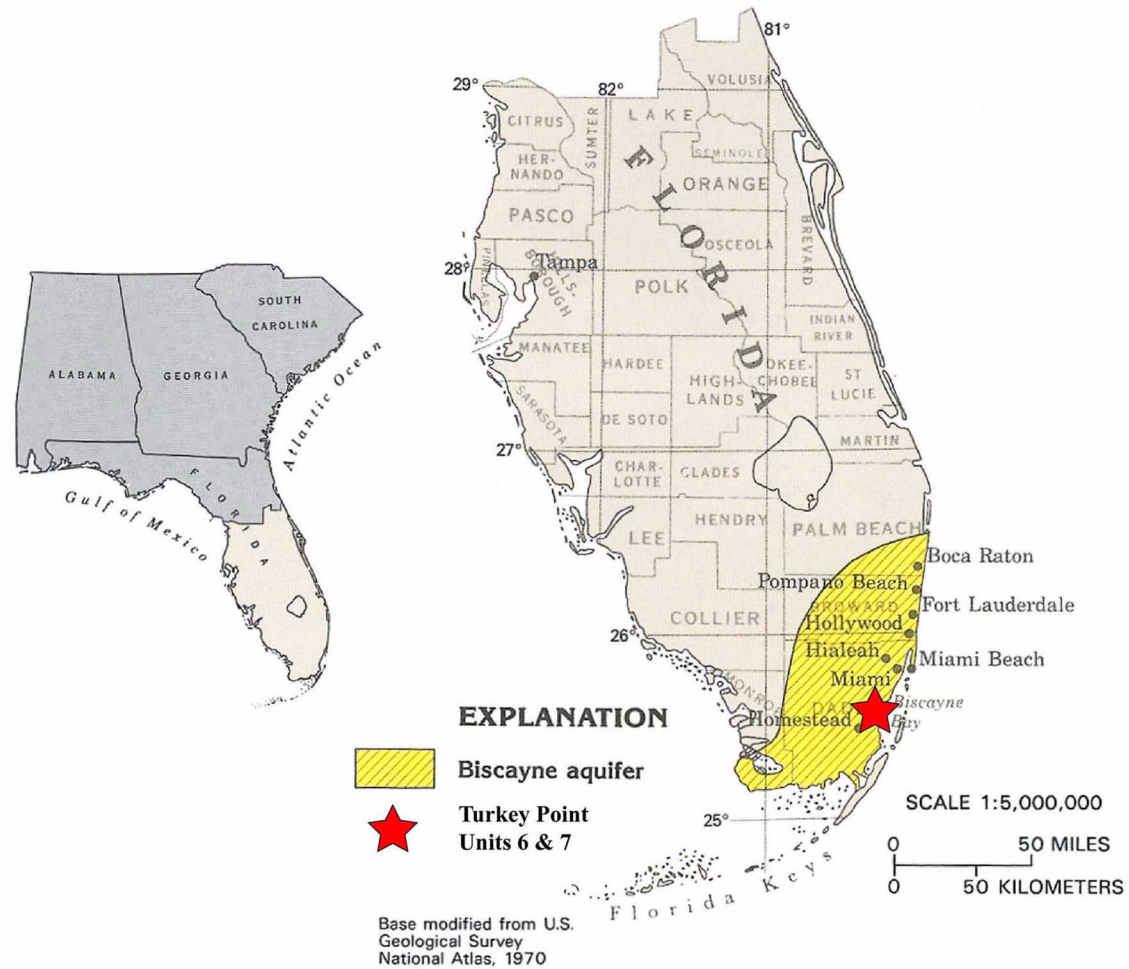
| ERATHEM | SYSTEM | SERIES | HYDRO- GEOLOGIC UNIT | | STRATIGRAPHIC UNIT | | LITHOLOGY | APPROXIMATE TOP ELEVATION (ft NAVD 88) | APPROXIMATE THICKNESS (ft) | |
|----------|------------|-------------------------------------|-----------------------------|---------------------|----------------------------|-------------------|---|--|-------------------------------|-----|
| CENEZOIC | QUATERNARY | HOLOCENE | | | organic muck | | organic soil and silt | 0 | 3 | |
| | | PLEISTOCENE | Surficial aquifer system | Biscayne aquifer | Miami Limestone | | sandy, oolitic limestone | -3 | 25 | |
| | | | | | Key Largo Limestone | | well indurated, vuggy, coralline limestone | -28 | 22 | |
| | | | | | Fort Thompson Formation | | poor/well indurated fossiliferous limestone | -50 | 65 | |
| | TERTIARY | PLIOCENE | | | Semi-confining unit | Tamiami Formation | | sand and silt with calcarenitic limestone | -115 | 105 |
| | | MIOCENE | Intermediate confining unit | Hawthorn Group | Peace River Formation | | silty calcareous sand and silt | -220 | 235 | |
| | | | | | Arcadia Formation | | calcareous wackestone with indurated limestones, sandstone, and sand | -455 | >160 | |
| | | | | | | | | | | |
| | | | | | | | | | | |
| | | drilling ended at -616.5 ft NAVD 88 | | | | | | | | |

Color represents similar composition (carbonate, clastics, and organics).

Turkey Point Units 6 & 7
COL Application
Part 2 — FSAR

PTN COL 2.4-4

Figure 2.4.12-205 Location of the Biscayne Aquifer in Southeast Florida

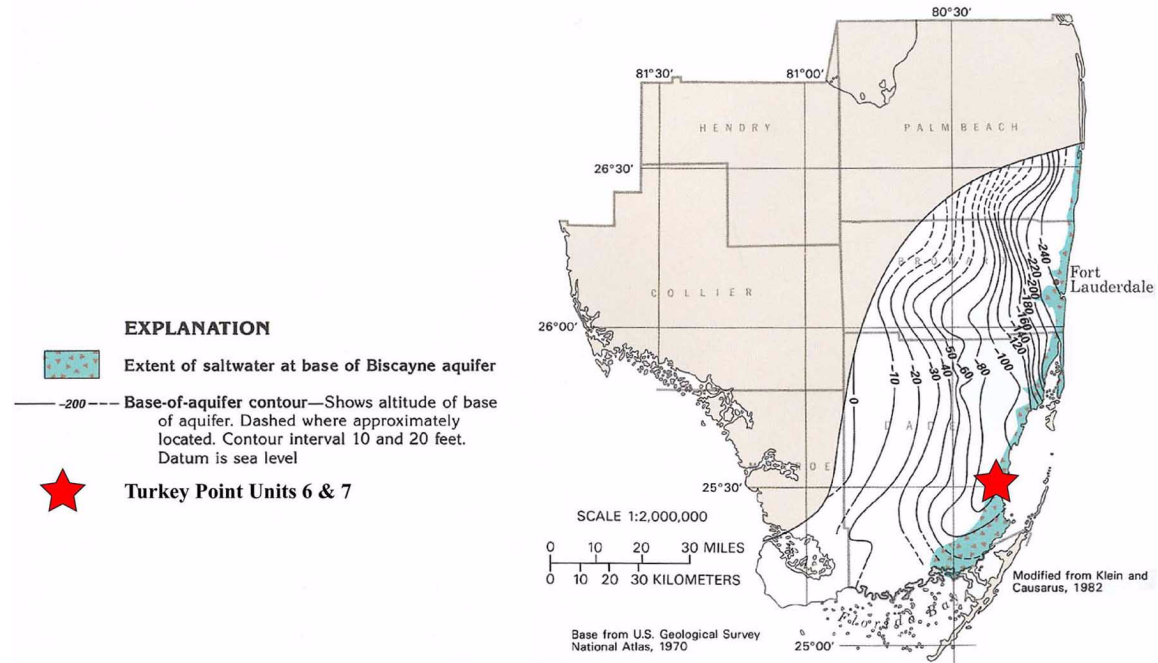


Modified from Reference 210

Turkey Point Units 6 & 7
COL Application
Part 2 — FSAR

PTN COL 2.4-4

Figure 2.4.12-206 Base of the Biscayne Aquifer

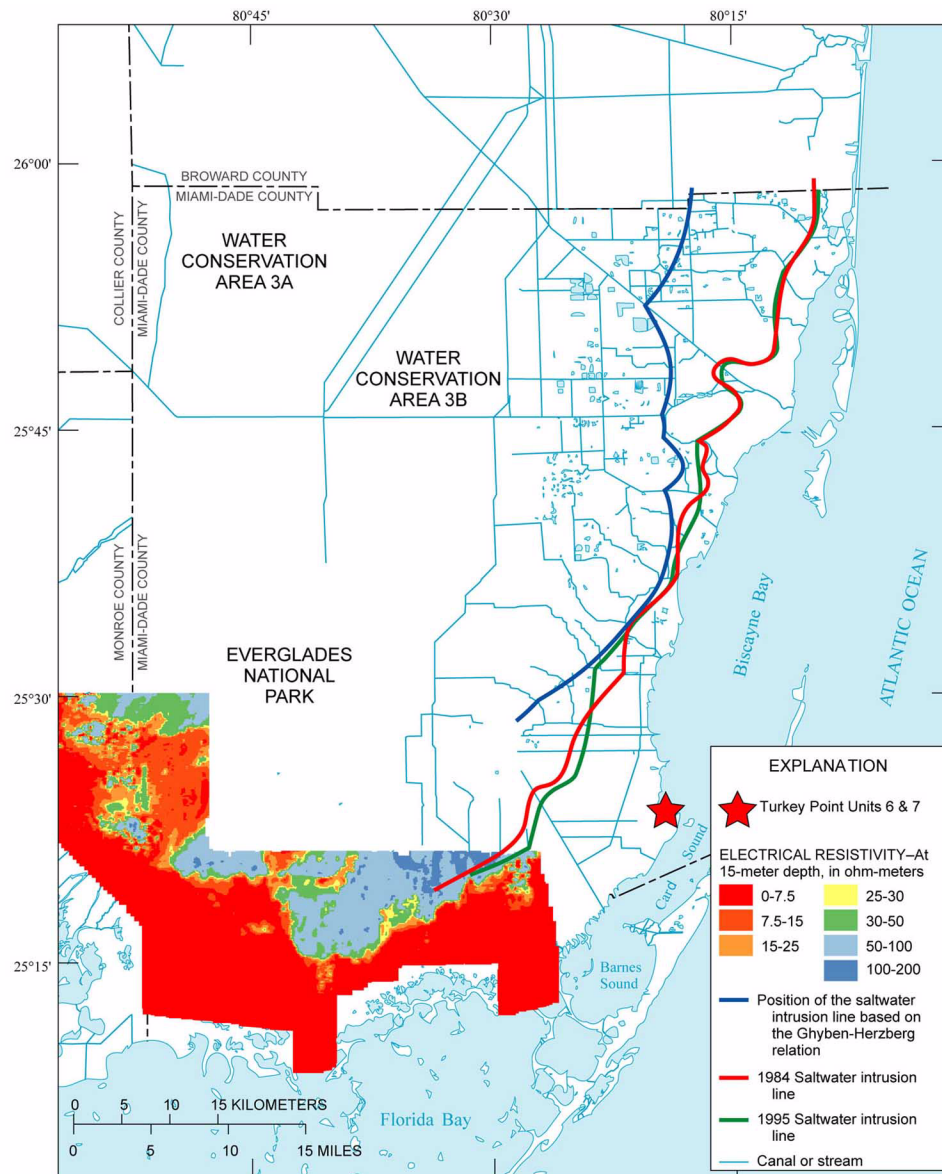


Modified from [Reference 210](#)

Turkey Point Units 6 & 7
COL Application
Part 2 — FSAR

PTN COL 2.4-4

Figure 2.4.12-207 Location of the Freshwater-Saltwater Interface

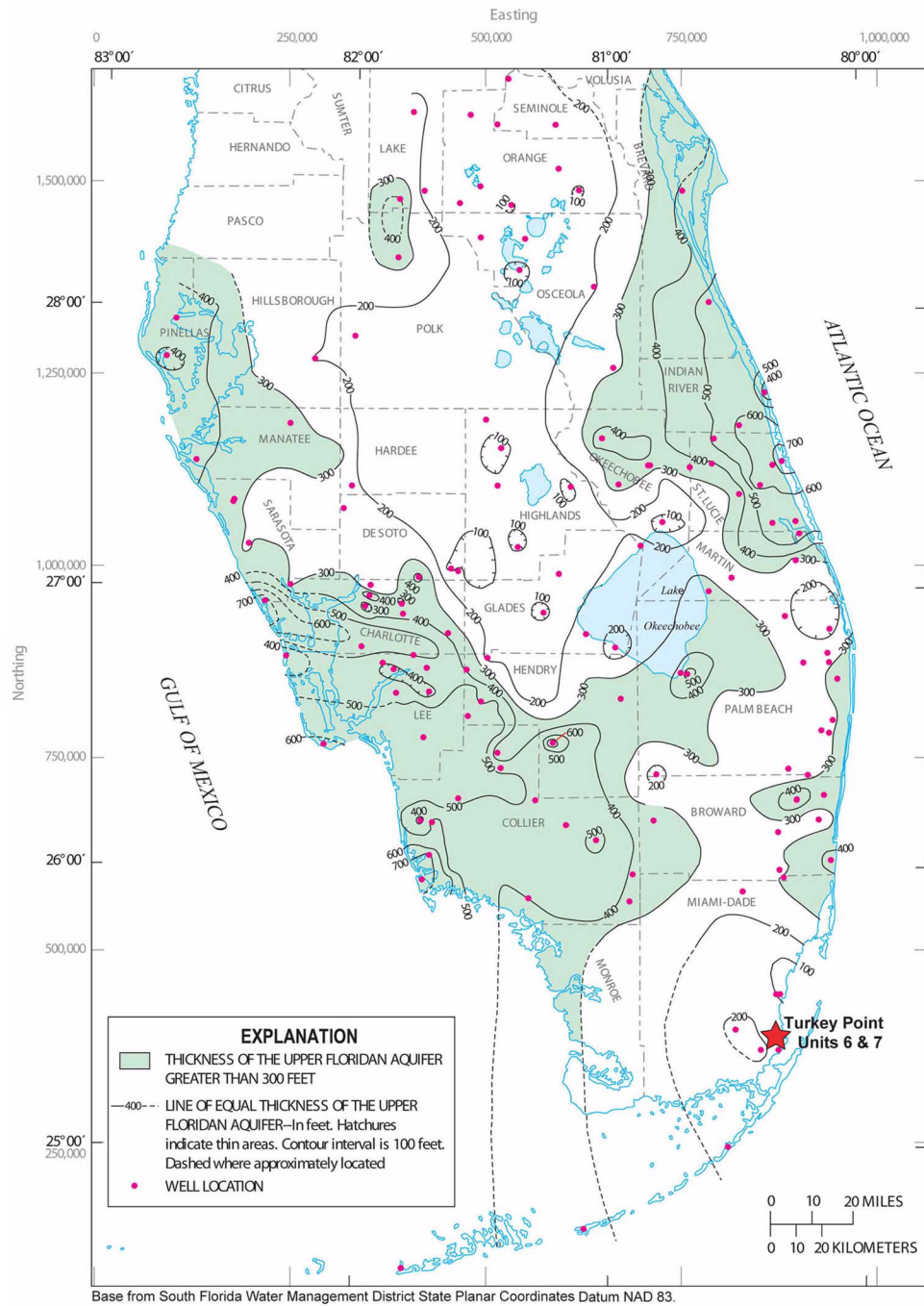


Modified from Reference 212

Turkey Point Units 6 & 7
COL Application
Part 2 — FSAR

PTN COL 2.4-4

Figure 2.4.12-208 Thickness of the Upper Floridan Aquifer

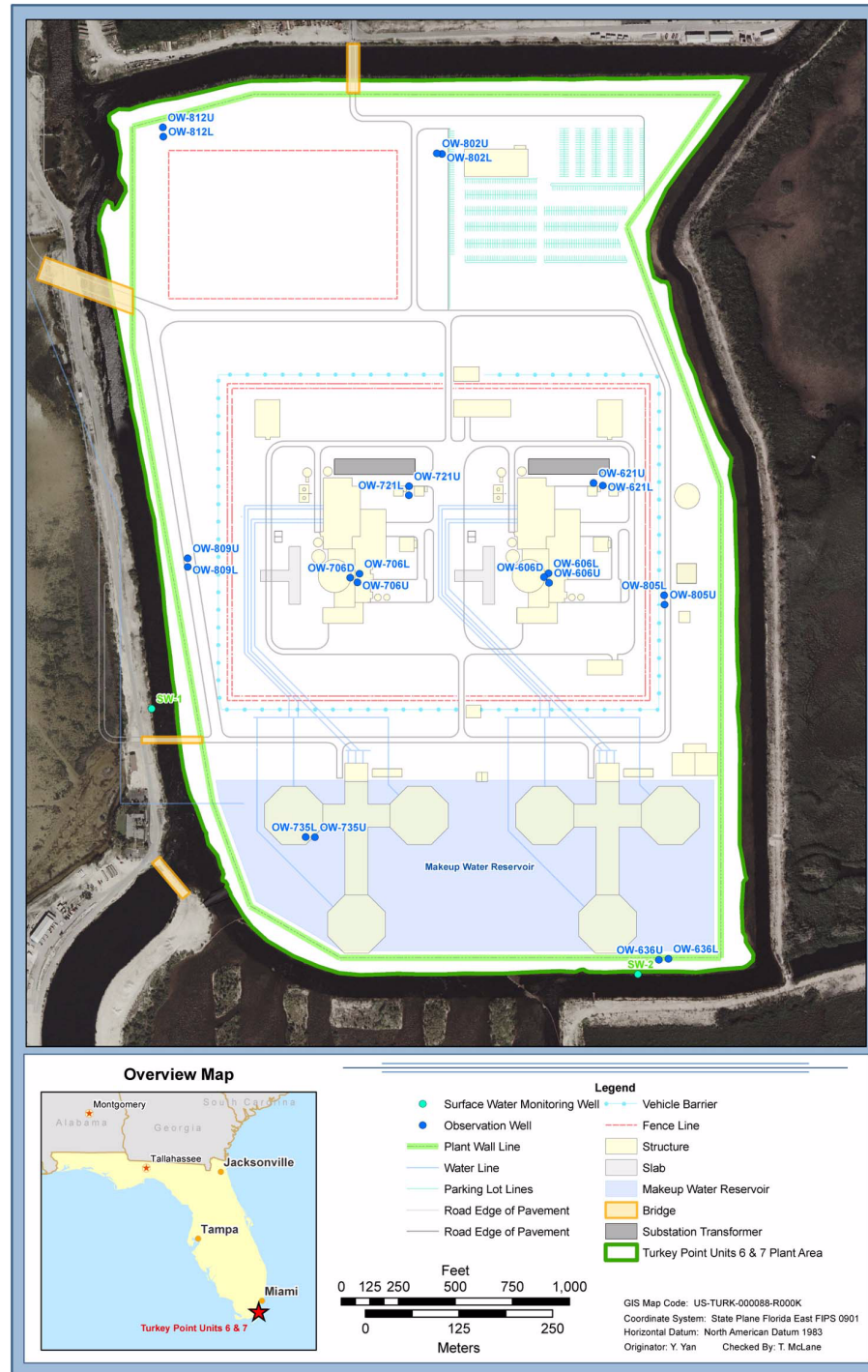


Modified from Reference 206

Turkey Point Units 6 & 7
COL Application
Part 2 — FSAR

PTN COL 2.4-4

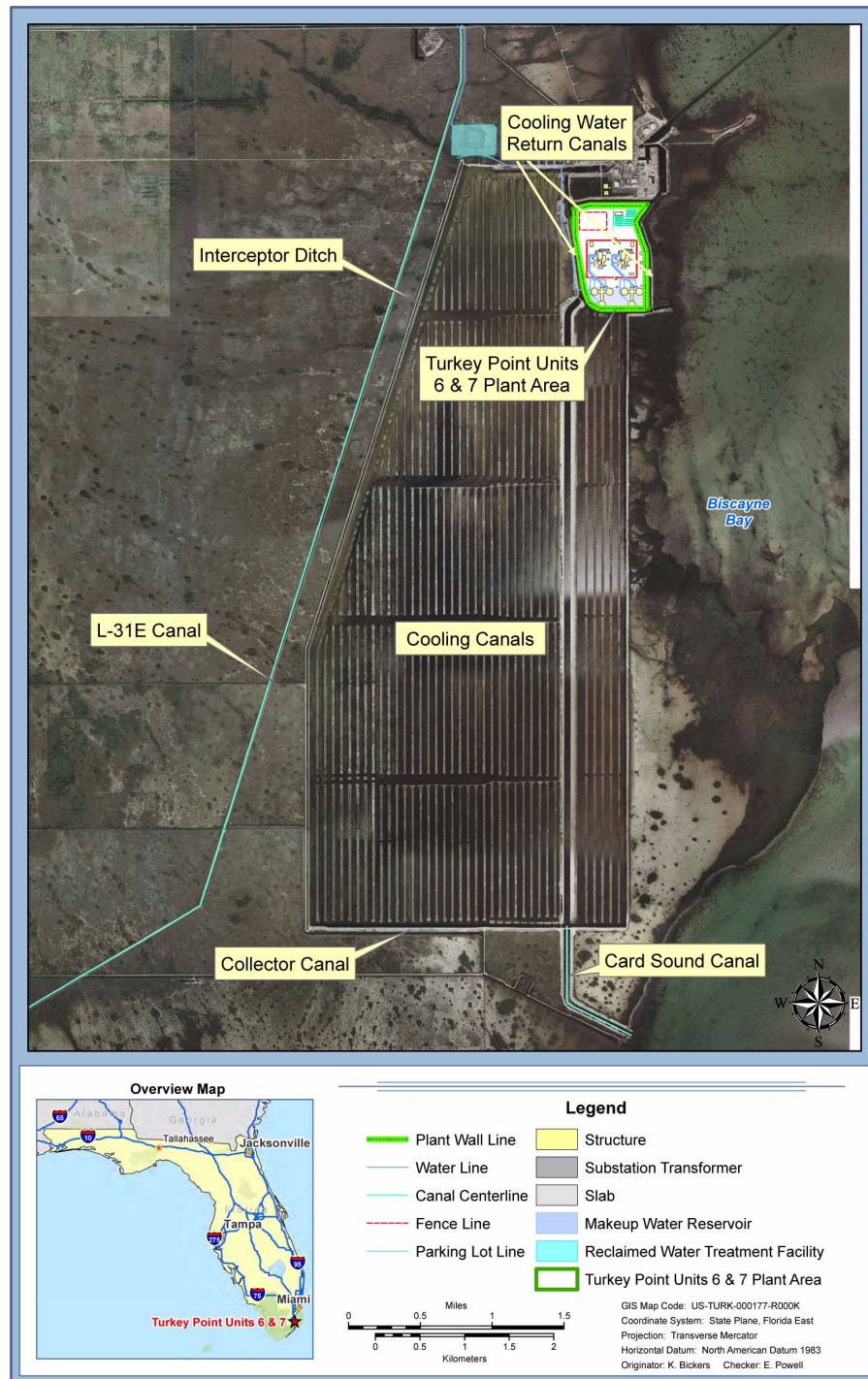
Figure 2.4.12-209 Units 6 & 7 Observation Well Locations



Turkey Point Units 6 & 7
COL Application
Part 2 — FSAR

PTN COL 2.4-4

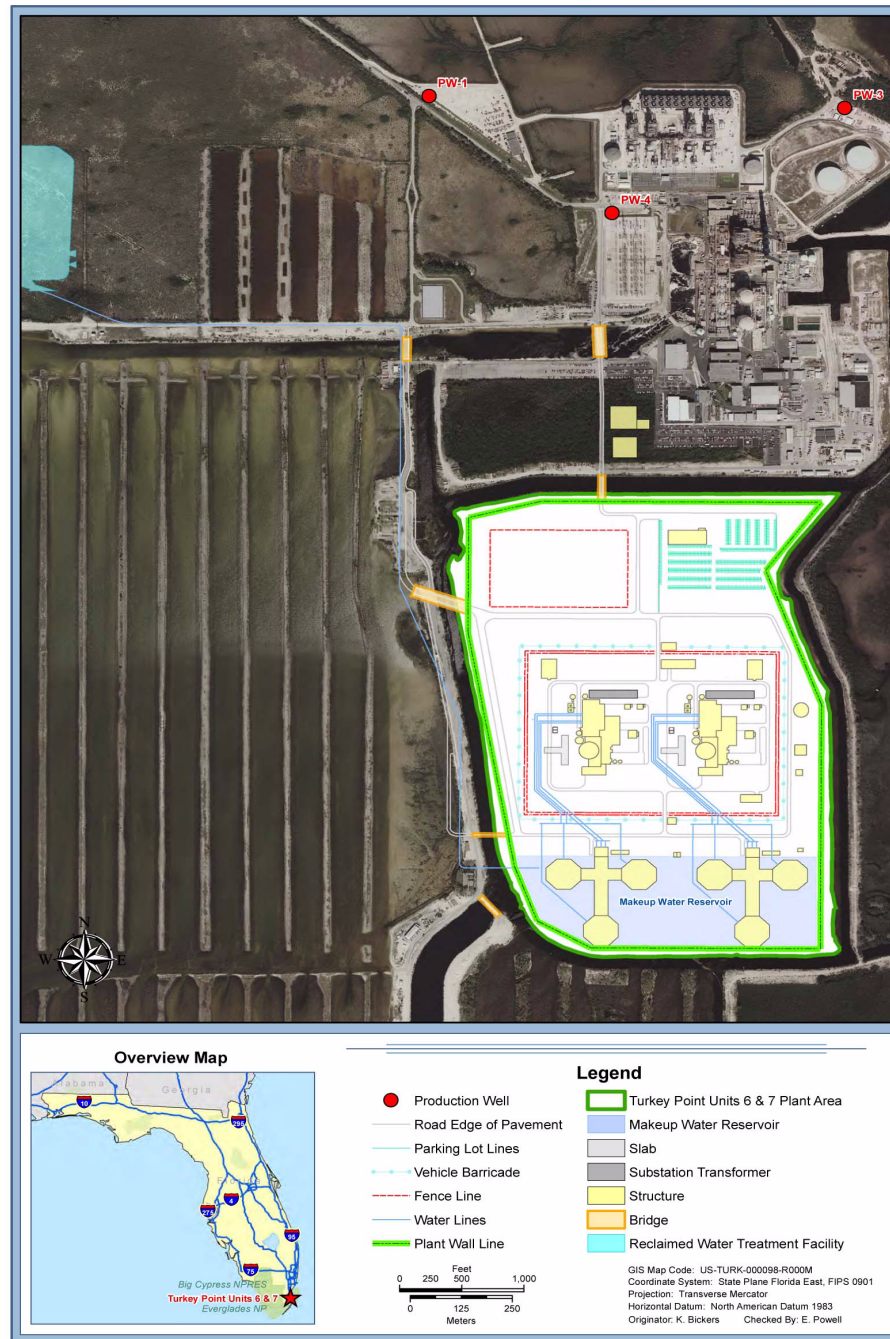
Figure 2.4.12-210 Industrial Wastewater Facility



Turkey Point Units 6 & 7
COL Application
Part 2 — FSAR

PTN COL 2.4-4

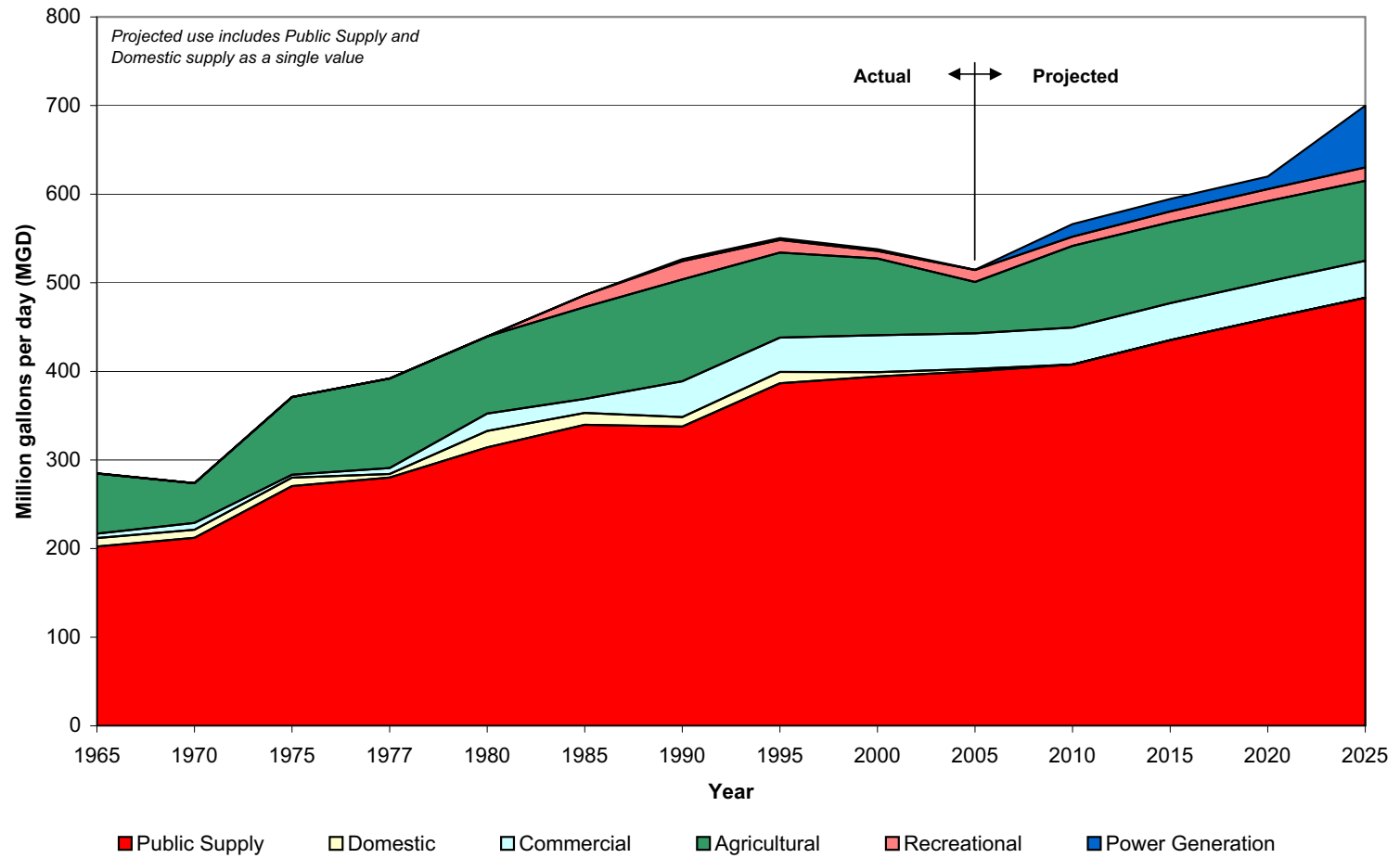
Figure 2.4.12-211 Upper Floridan Aquifer Production Wells for Unit 5



Turkey Point Units 6 & 7
COL Application
Part 2 — FSAR

PTN COL 2.4-4

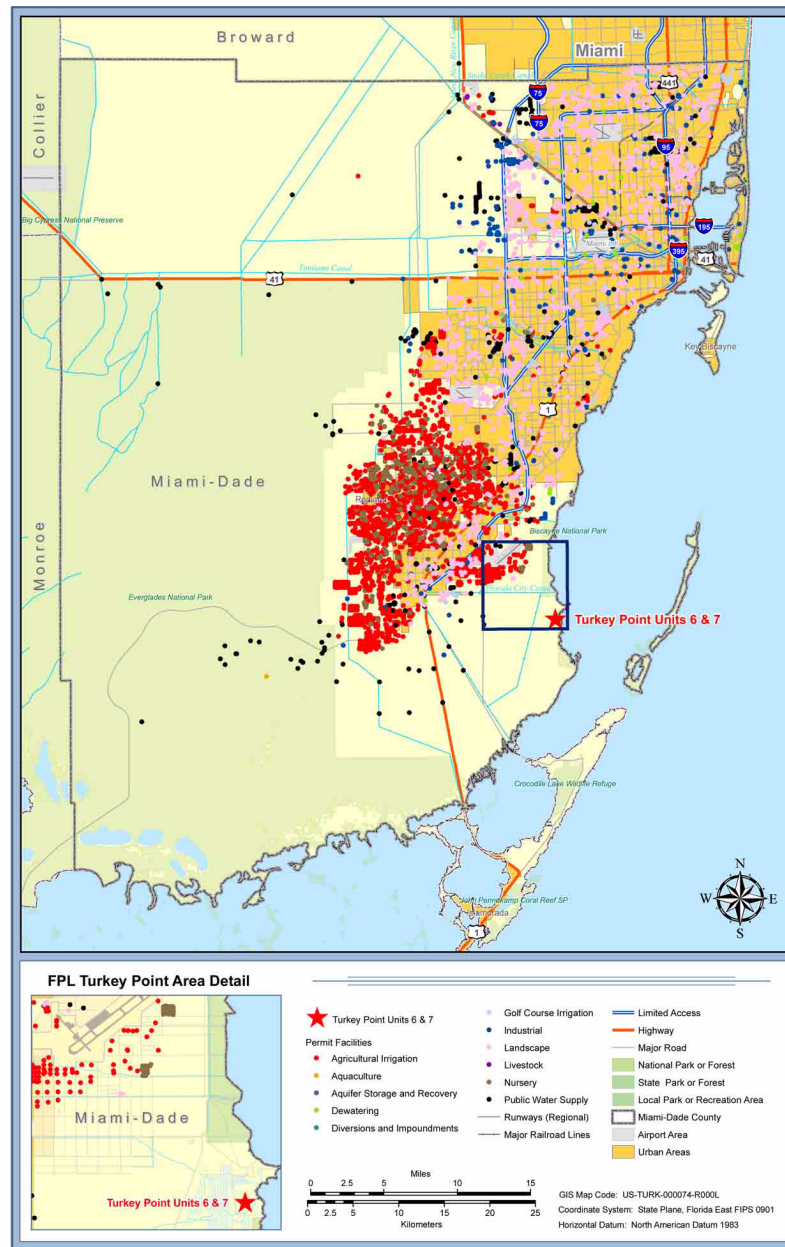
Figure 2.4.12-212 Withdrawals of Groundwater in Miami-Dade County



Source: Table 2.4.12-202

Turkey Point Units 6 & 7
COL Application
Part 2 — FSAR

PTN COL 2.4-4 **Figure 2.4.12-213 SFWMD Freshwater Well Permits in Miami-Dade County**

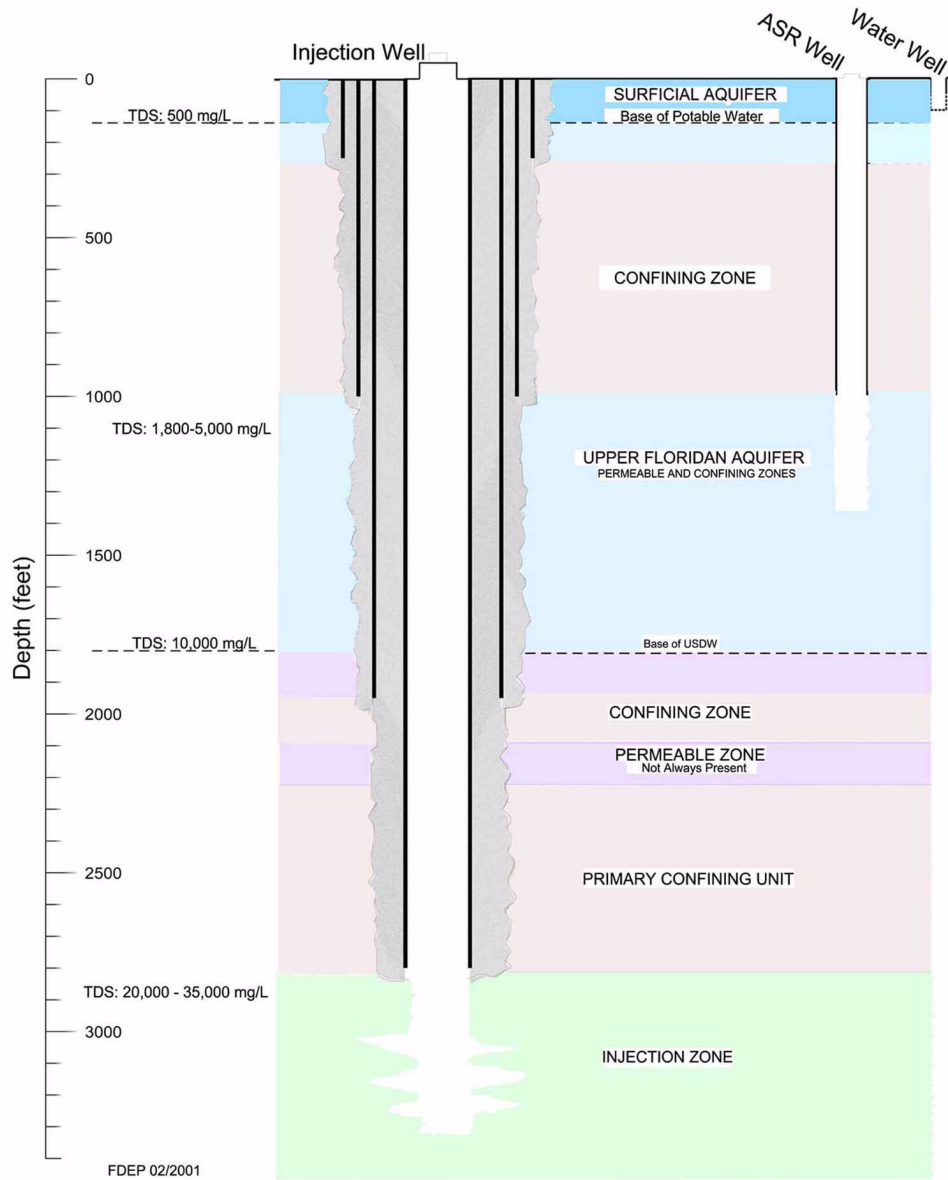


Source: Reference 227

Turkey Point Units 6 & 7
COL Application
Part 2 — FSAR

PTN COL 2.4-4

Figure 2.4.12-214 Typical Municipal Class 1 Injection Well, ASR Well and Water Well in Southeast Florida

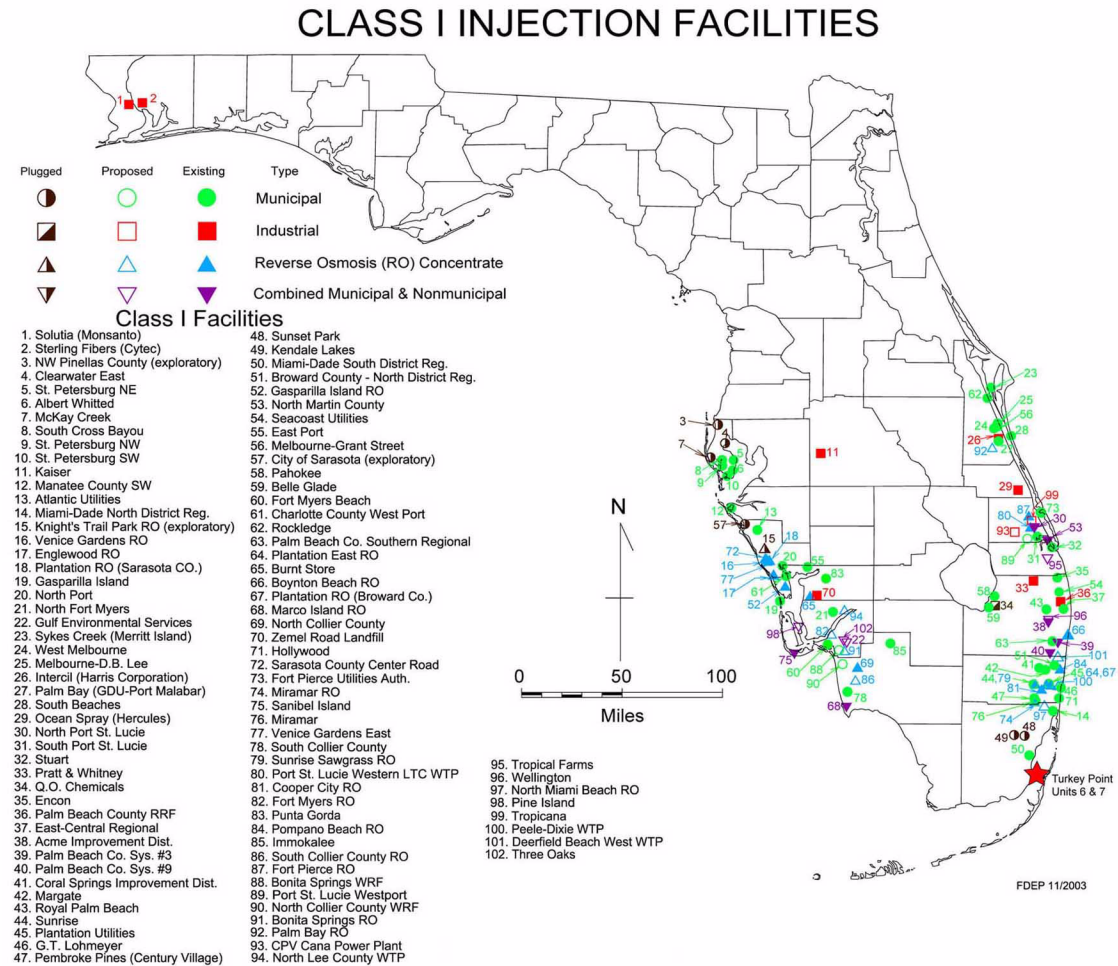


Source: [Reference 229](#)

Turkey Point Units 6 & 7
COL Application
Part 2 — FSAR

PTN COL 2.4-4

Figure 2.4.12-215 Locations of Class I Injection Facilities in Florida

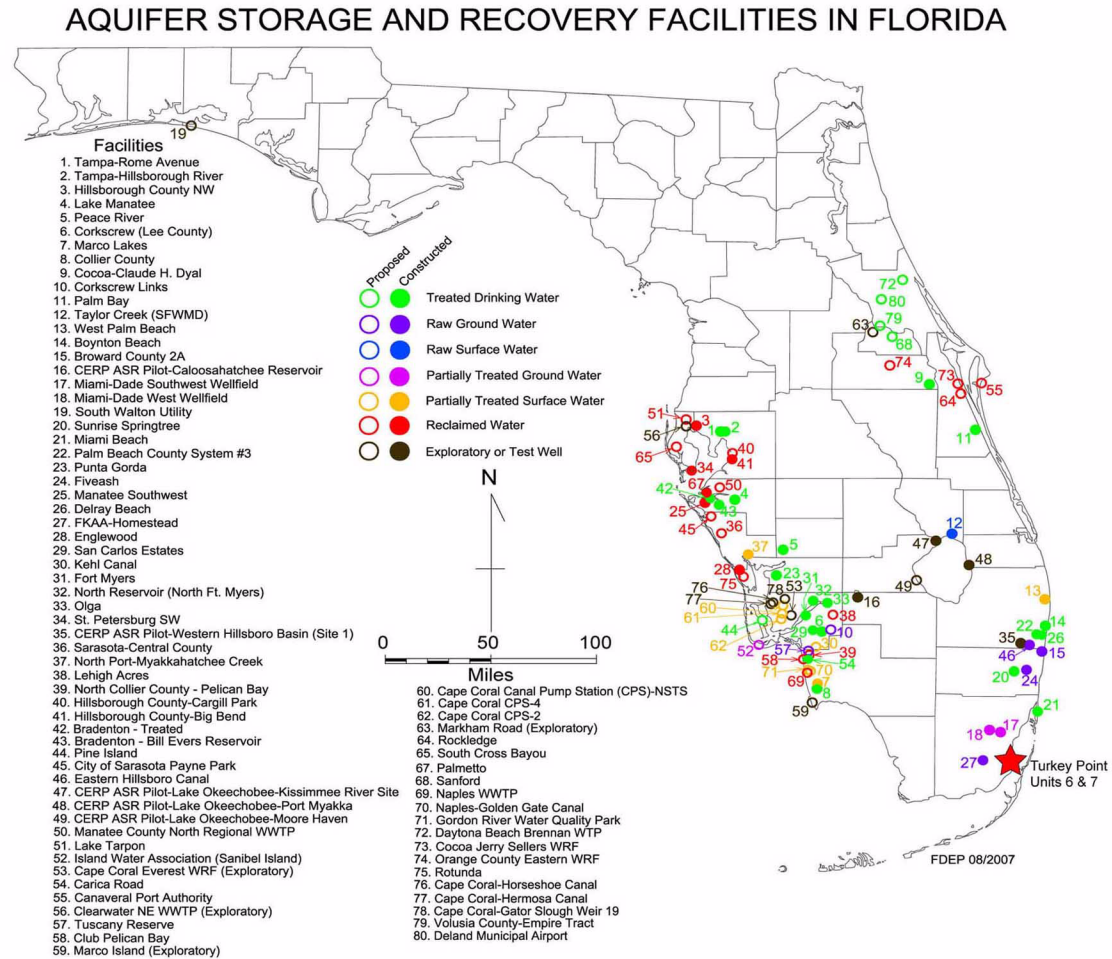


Modified from Reference 229

Turkey Point Units 6 & 7
COL Application
Part 2 — FSAR

PTN COL 2.4-4

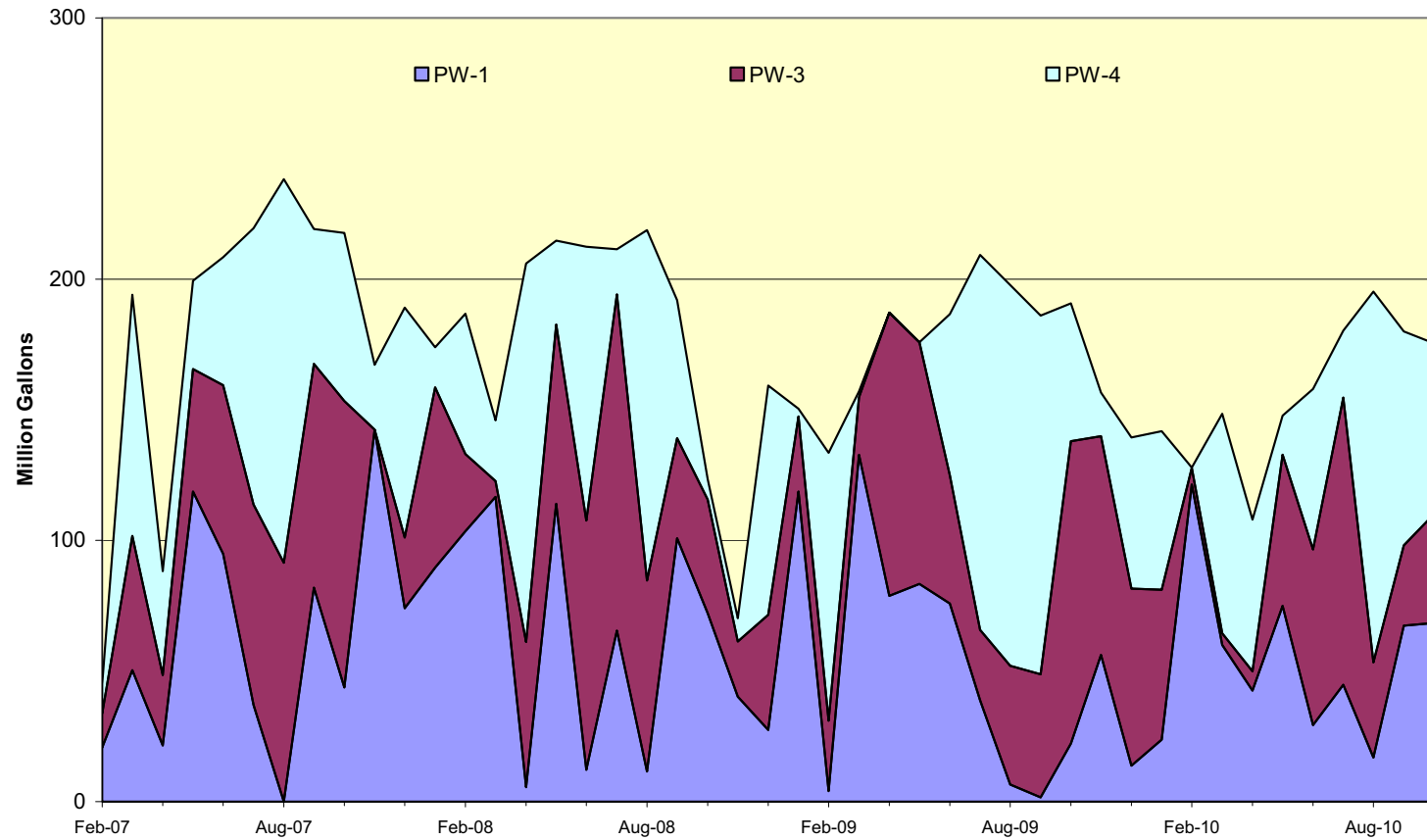
Figure 2.4.12-216 Location of Aquifer Storage and Recovery Facilities in Florida



Modified from Reference 229

PTN COL 2.4-4

Figure 2.4.12-217 Turkey Point Upper Floridan Aquifer Saline Groundwater Use



Turkey Point Units 6 & 7
COL Application
Part 2 — FSAR

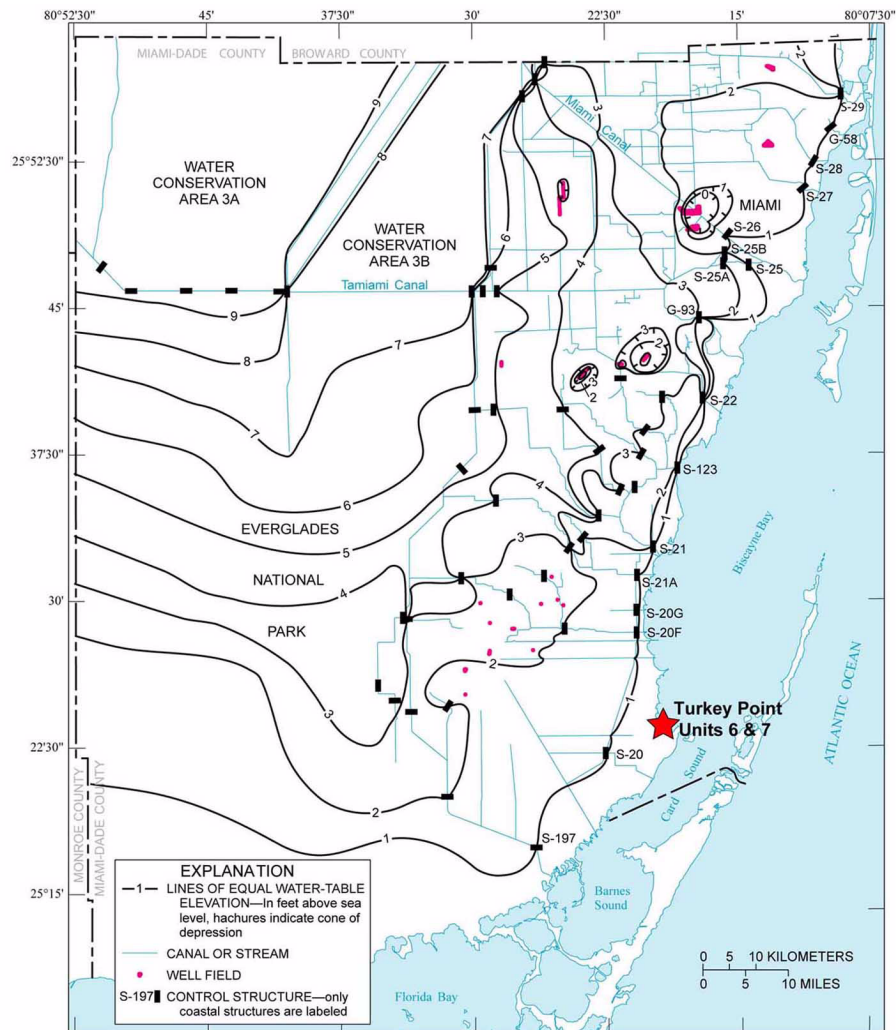
PTN COL 2.4-4

Figure 2.4.12-218 Location of Radial Collector Wells



Turkey Point Units 6 & 7
COL Application
Part 2 — FSAR

PTN COL 2.4-4 **Figure 2.4.12-219 May 1993 Biscayne Aquifer Potentiometric Surface Map**

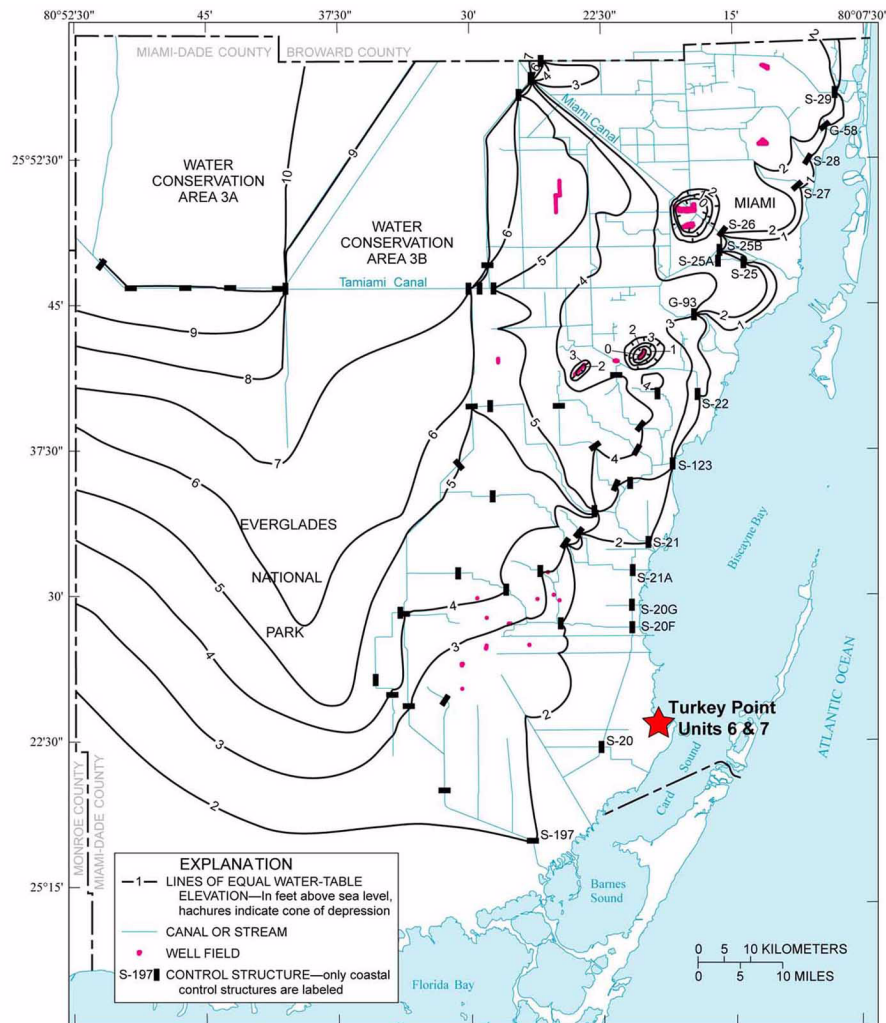


Modified from Reference 212

Turkey Point Units 6 & 7
COL Application
Part 2 — FSAR

PTN COL 2.4-4

Figure 2.4.12-220 November 1993 Biscayne Aquifer Potentiometric Surface Map

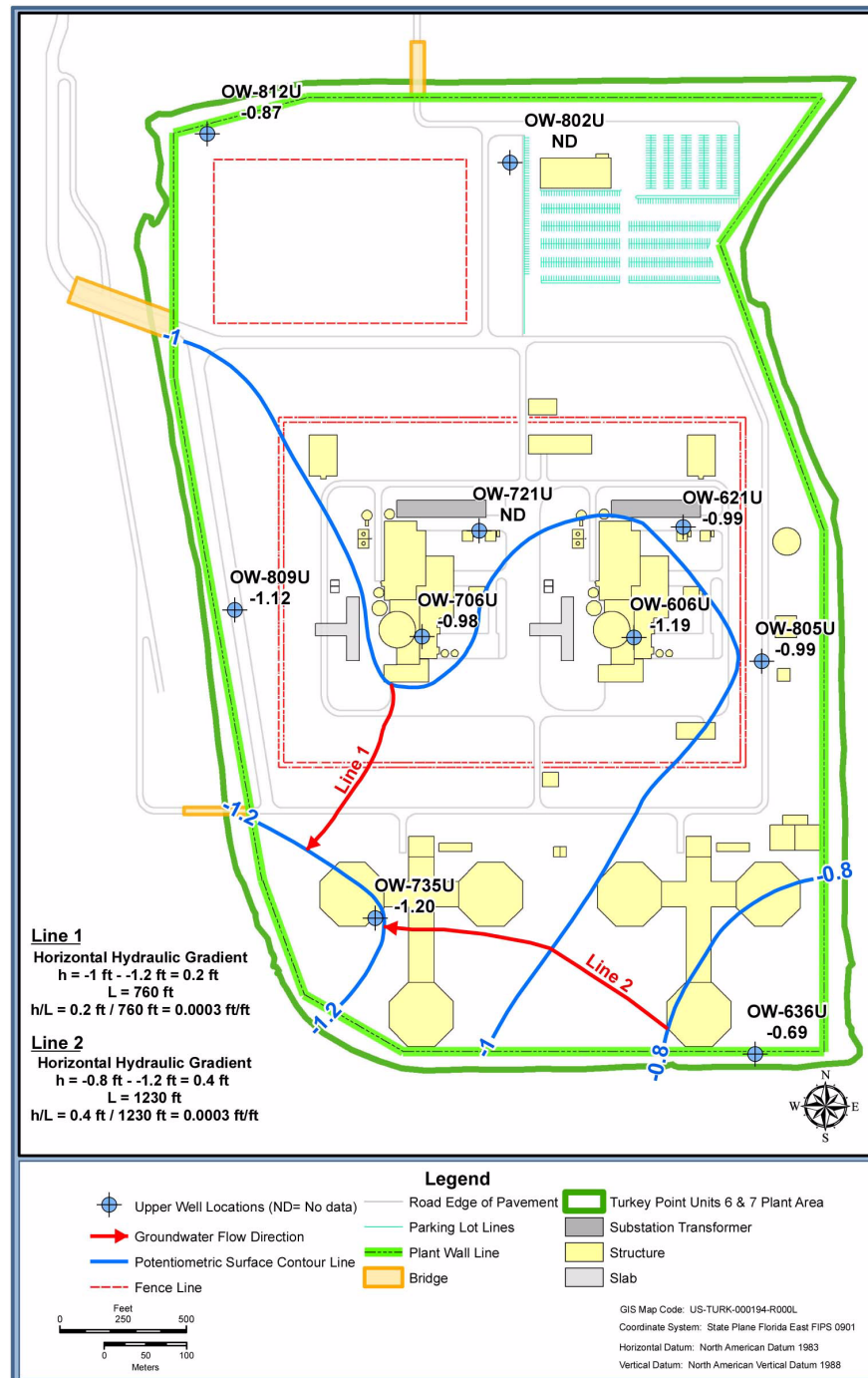


Modified from Reference 212

Turkey Point Units 6 & 7
COL Application
Part 2 — FSAR

PTN COL 2.4-4

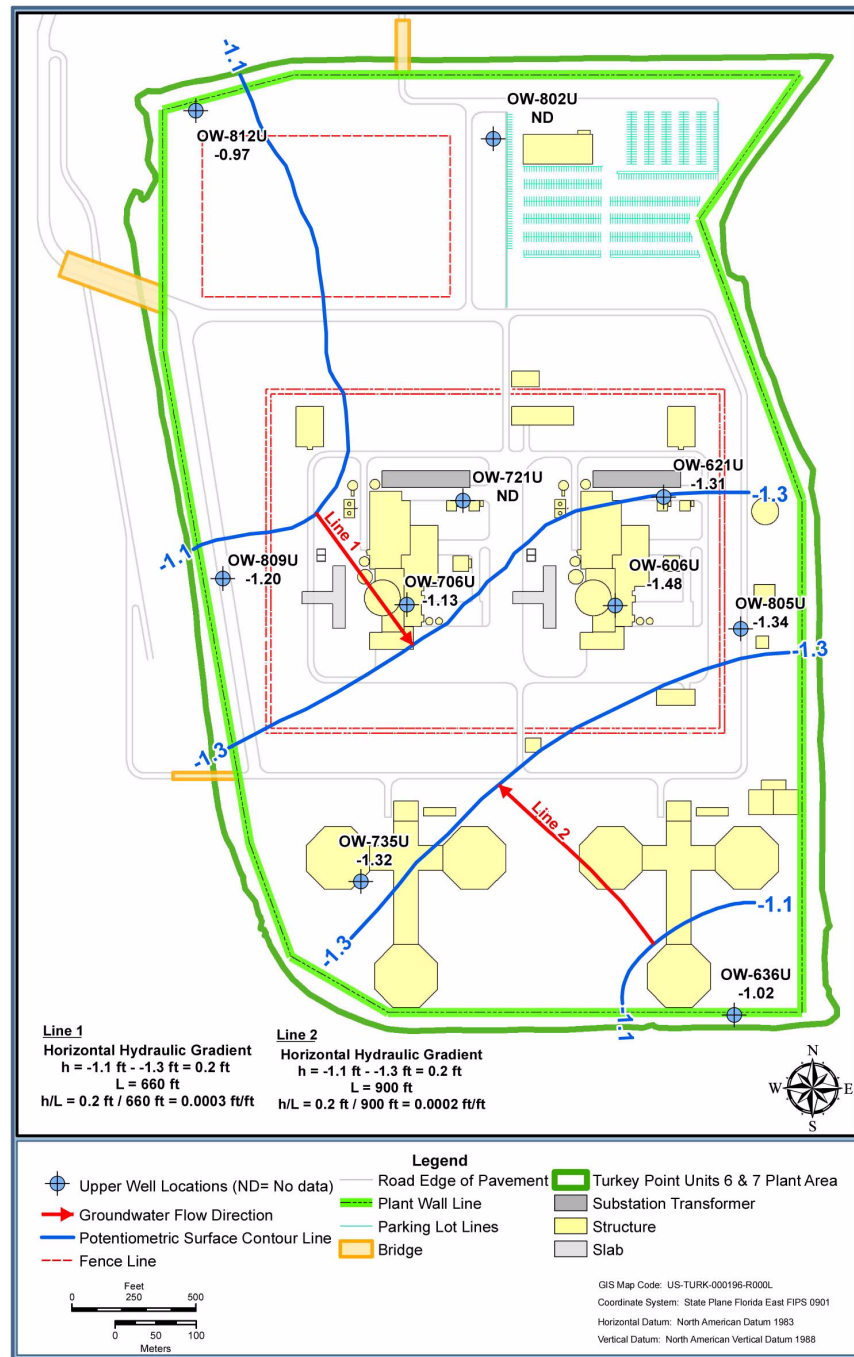
Figure 2.4.12-221 Biscayne Aquifer Potentiometric Surface Map, Upper Monitoring Interval, June 29, 2008 (Sheet 1 of 2) High Tide



Turkey Point Units 6 & 7
COL Application
Part 2 — FSAR

PTN COL 2.4-4

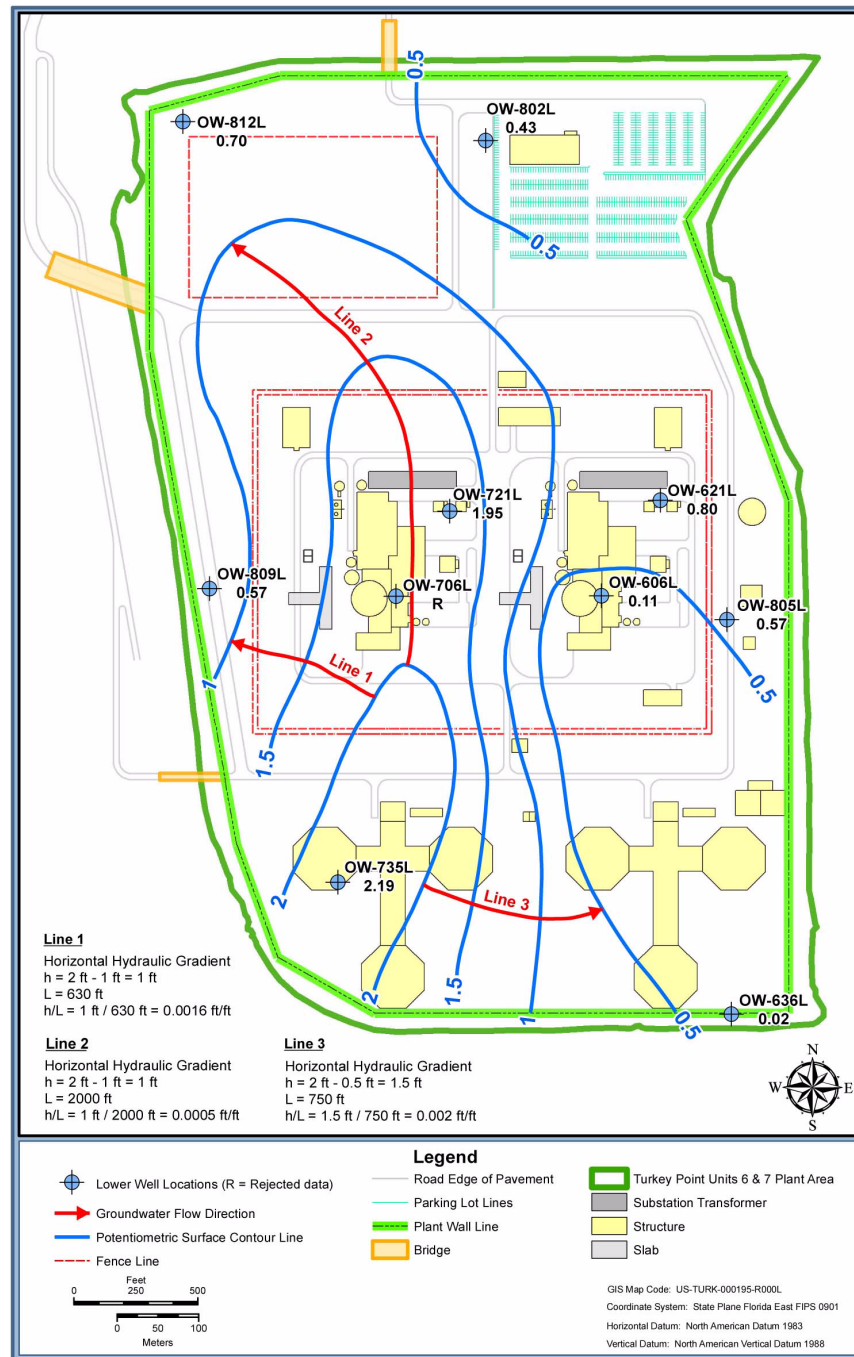
Figure 2.4.12-221 Biscayne Aquifer Potentiometric Surface Map, Upper Monitoring Interval, June 29, 2008 (Sheet 2 of 2) Low Tide



Turkey Point Units 6 & 7
COL Application
Part 2 — FSAR

PTN COL 2.4-4

Figure 2.4.12-222 Biscayne Aquifer Potentiometric Surface Map, Lower Monitoring Interval, June 29, 2008 (Sheet 1 of 2) High Tide



Turkey Point Units 6 & 7
COL Application
Part 2 — FSAR

PTN COL 2.4-4

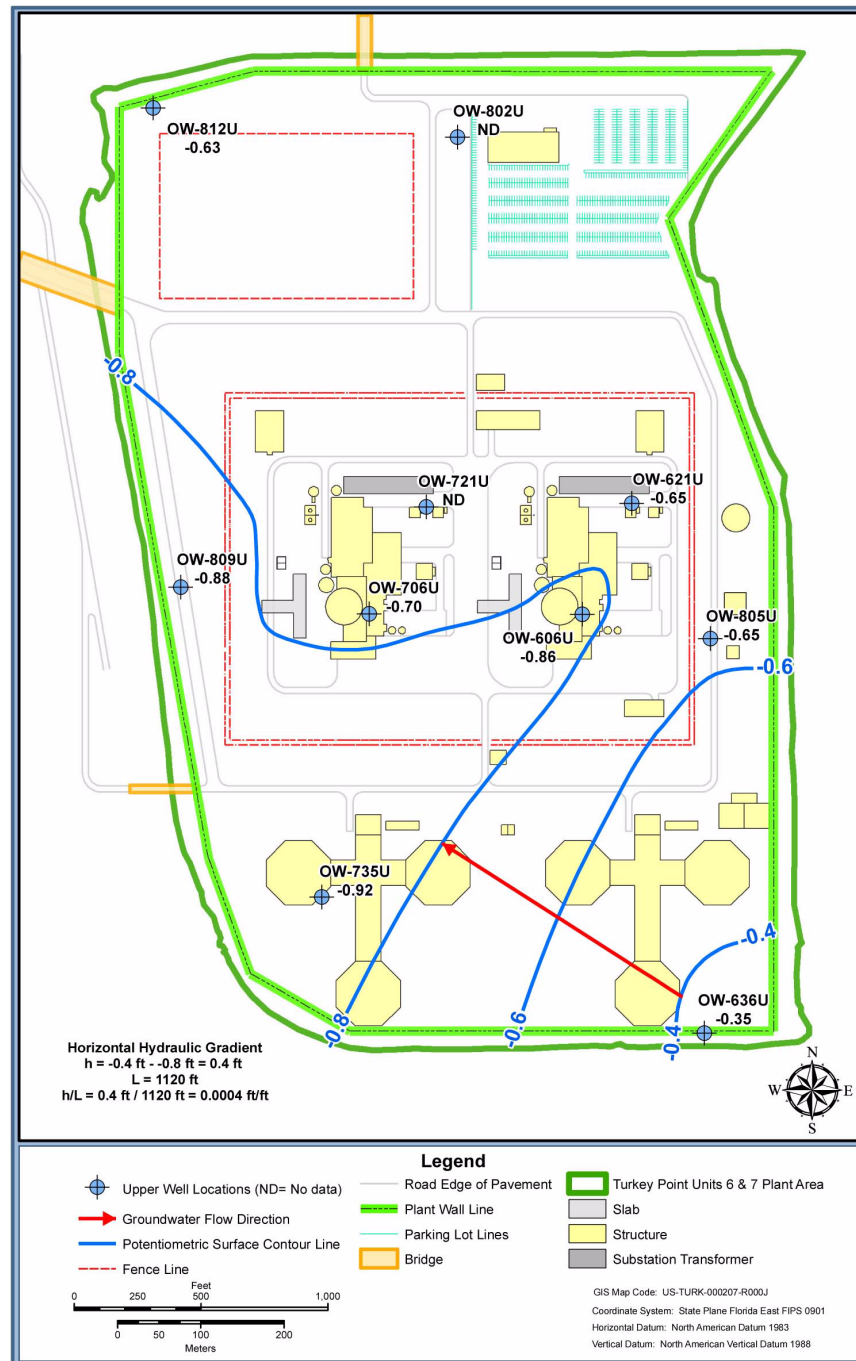
Figure 2.4.12-222 Biscayne Aquifer Potentiometric Surface Map, Lower Monitoring Interval, June 29, 2008 (Sheet 2 of 2) Low Tide



Turkey Point Units 6 & 7
COL Application
Part 2 — FSAR

PTN COL 2.4-4

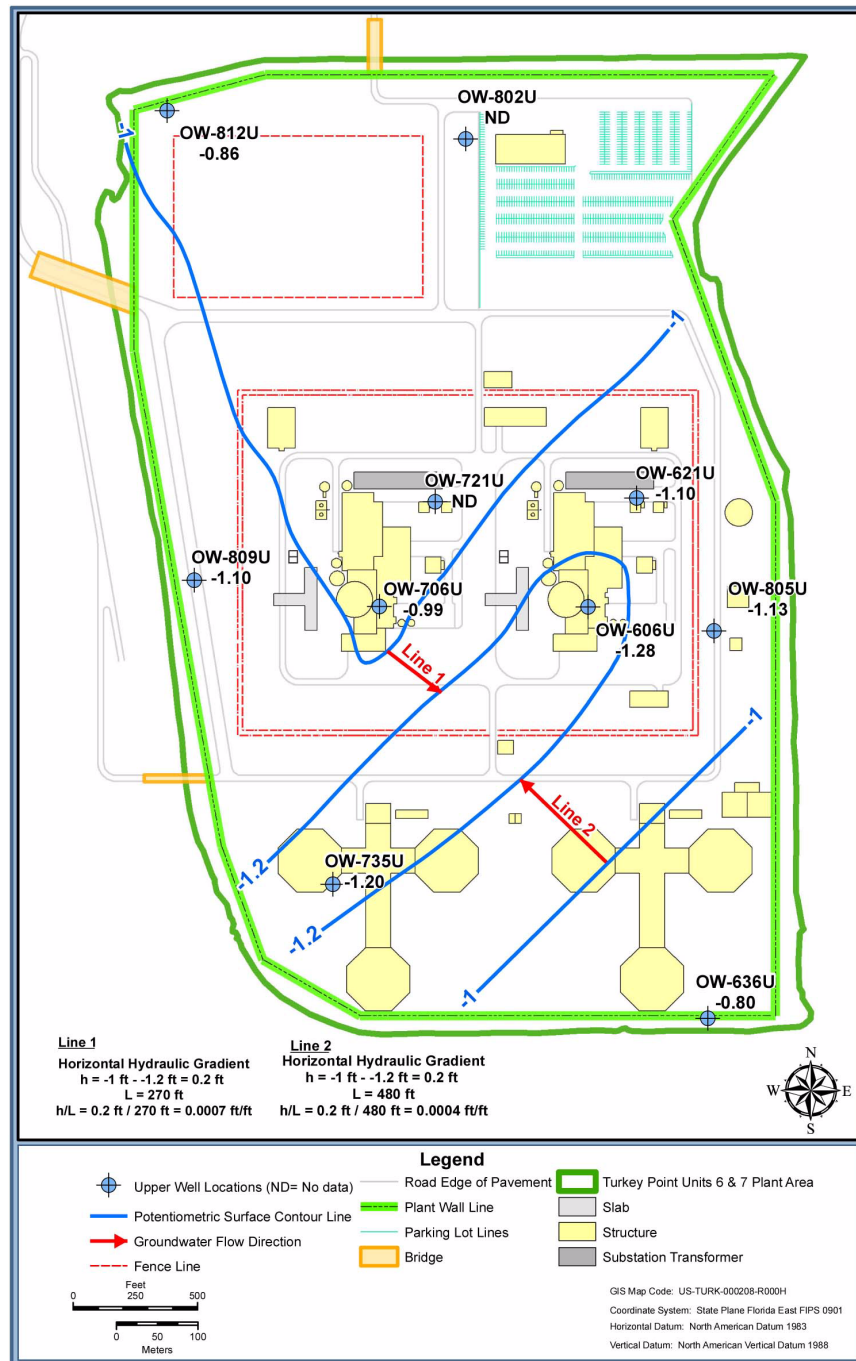
Figure 2.4.12-223 Biscayne Aquifer Potentiometric Surface Map, Upper Monitoring Interval, August 15, 2008 (Sheet 1 of 2) High Tide



Turkey Point Units 6 & 7
COL Application
Part 2 — FSAR

PTN COL 2.4-4

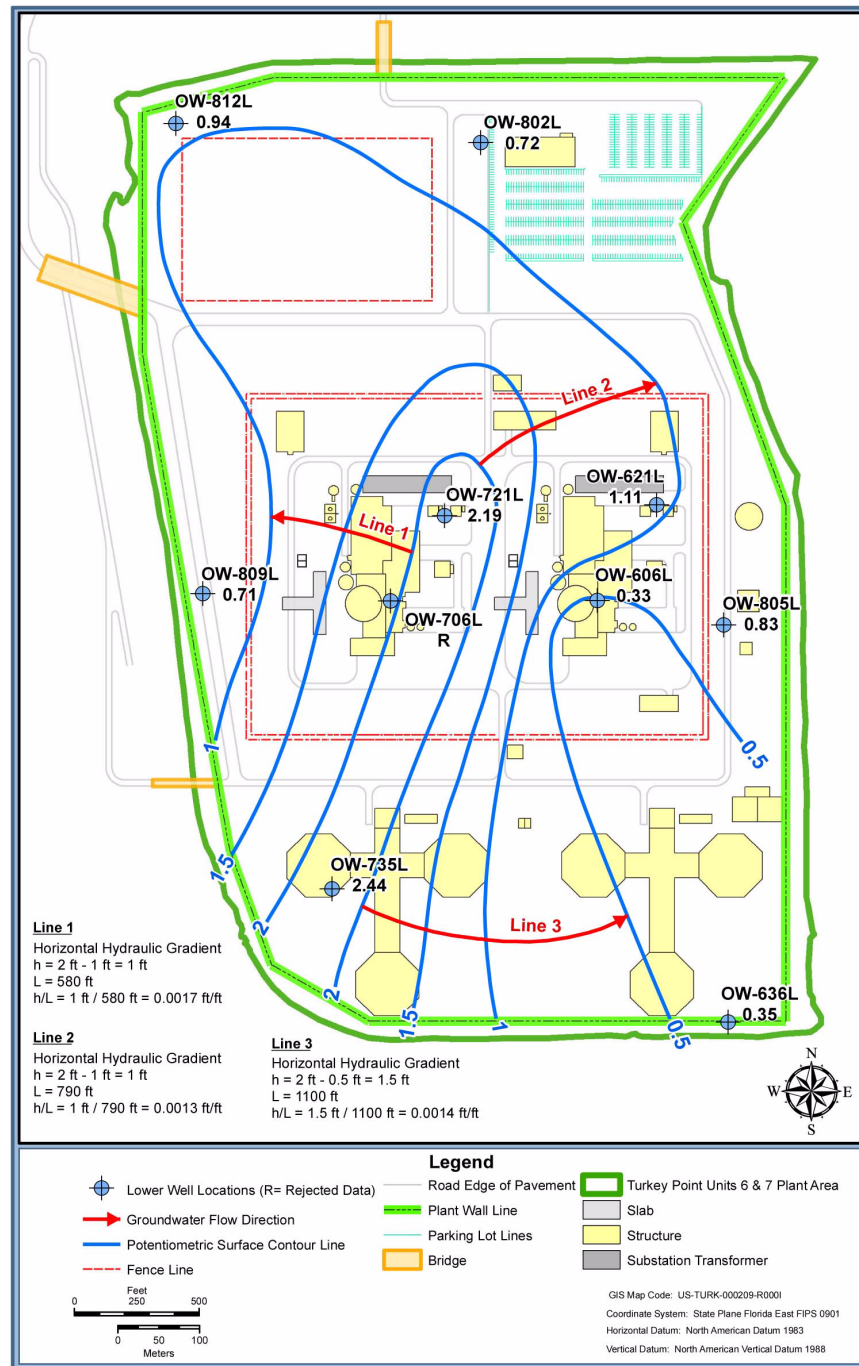
Figure 2.4.12-223 Biscayne Aquifer Potentiometric Surface Map, Upper Monitoring Interval, August 15, 2008 (Sheet 2 of 2) Low Tide



Turkey Point Units 6 & 7
COL Application
Part 2 — FSAR

PTN COL 2.4-4

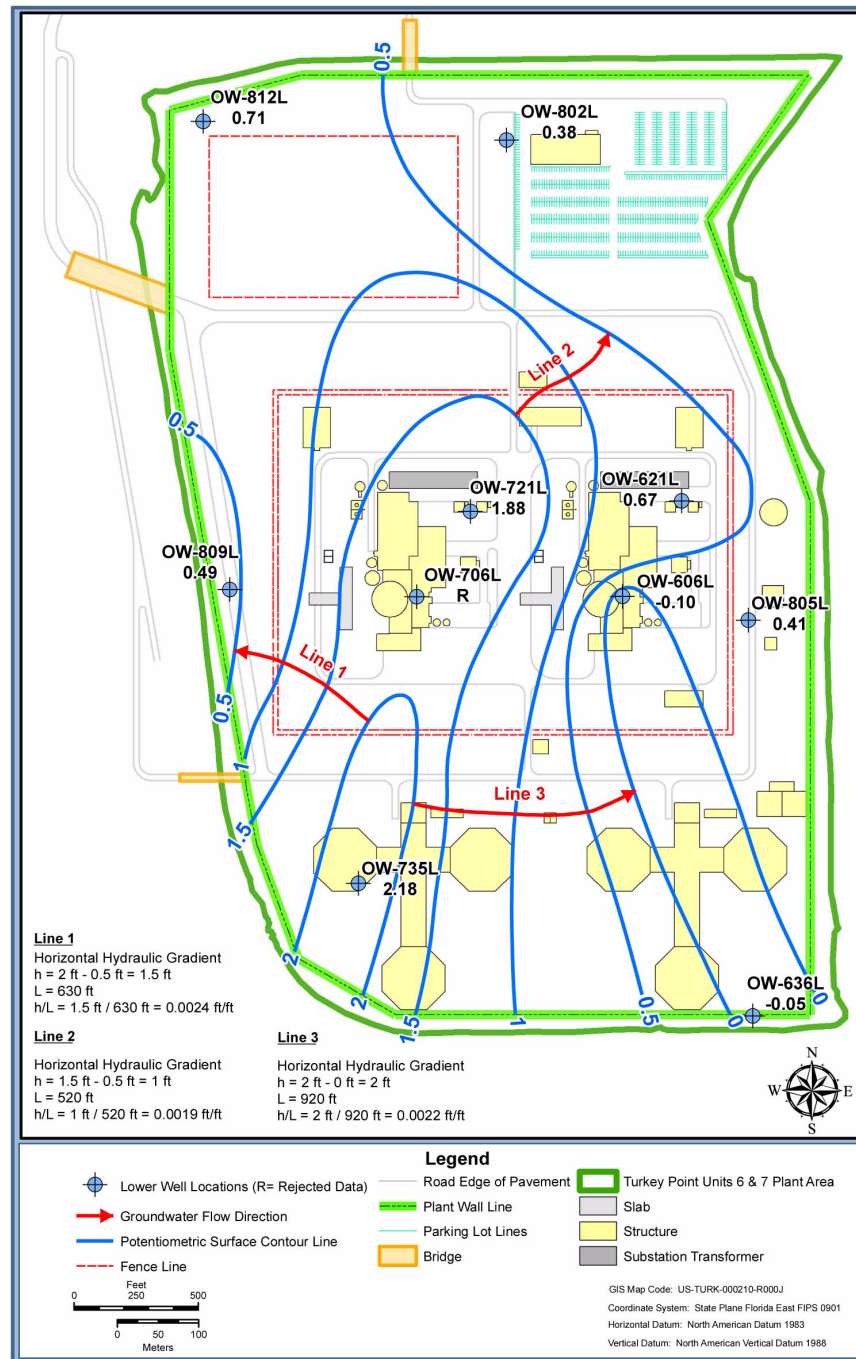
Figure 2.4.12-224 Biscayne Aquifer Potentiometric Surface Map, Lower Monitoring Interval, August 15, 2008 (Sheet 1 of 2) High Tide



Turkey Point Units 6 & 7
COL Application
Part 2 — FSAR

PTN COL 2.4-4

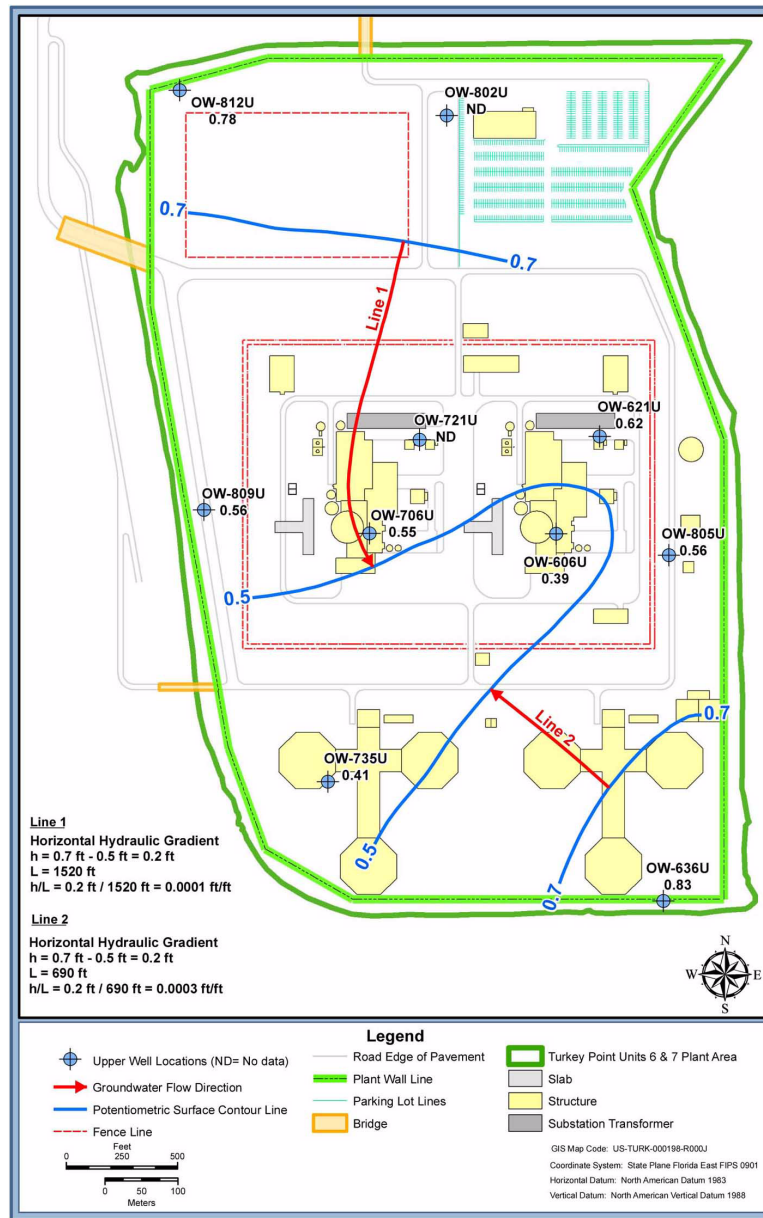
Figure 2.4.12-224 Biscayne Aquifer Potentiometric Surface Map, Lower Monitoring Interval, August 15, 2008 (Sheet 2 of 2) Low Tide



Turkey Point Units 6 & 7
COL Application
Part 2 — FSAR

PTN COL 2.4-4

Figure 2.4.12-225 Biscayne Aquifer Potentiometric Surface Map, Upper Monitoring Interval, October 5, 2008 (Sheet 1 of 2) High Tide



Turkey Point Units 6 & 7
COL Application
Part 2 — FSAR

PTN COL 2.4-4

Figure 2.4.12-225 Biscayne Aquifer Potentiometric Surface Map, Upper Monitoring Interval, October 5, 2008 (Sheet 2 of 2) Low Tide

