

Figure 9.1-1 – Fuel Pool Cooling and Cleanup System P&ID (Sheet 2 of 3)

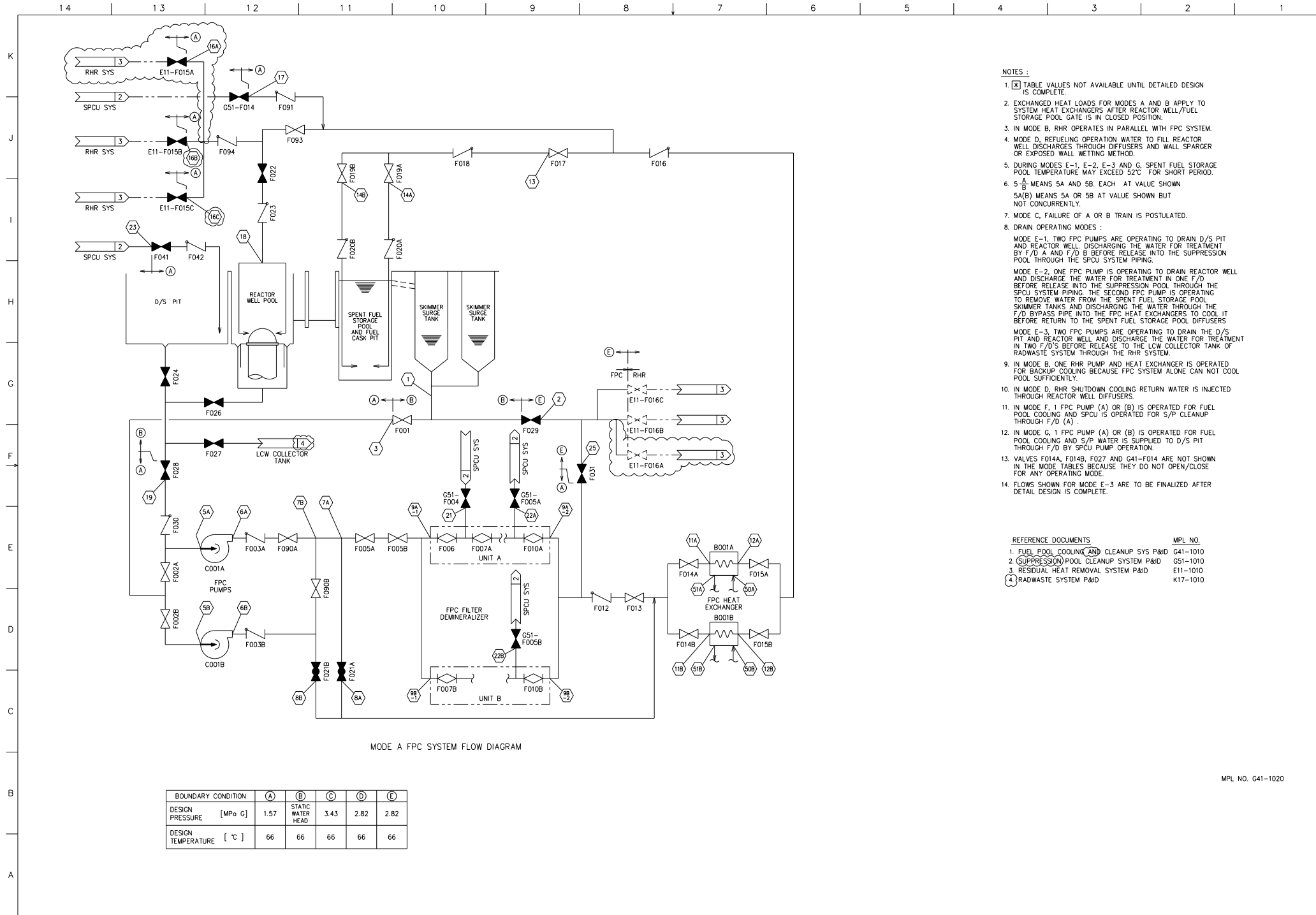


Figure 9.1-2 – Fuel Pool Cooling and Cleanup System PFD (Sheet 1 of 2)

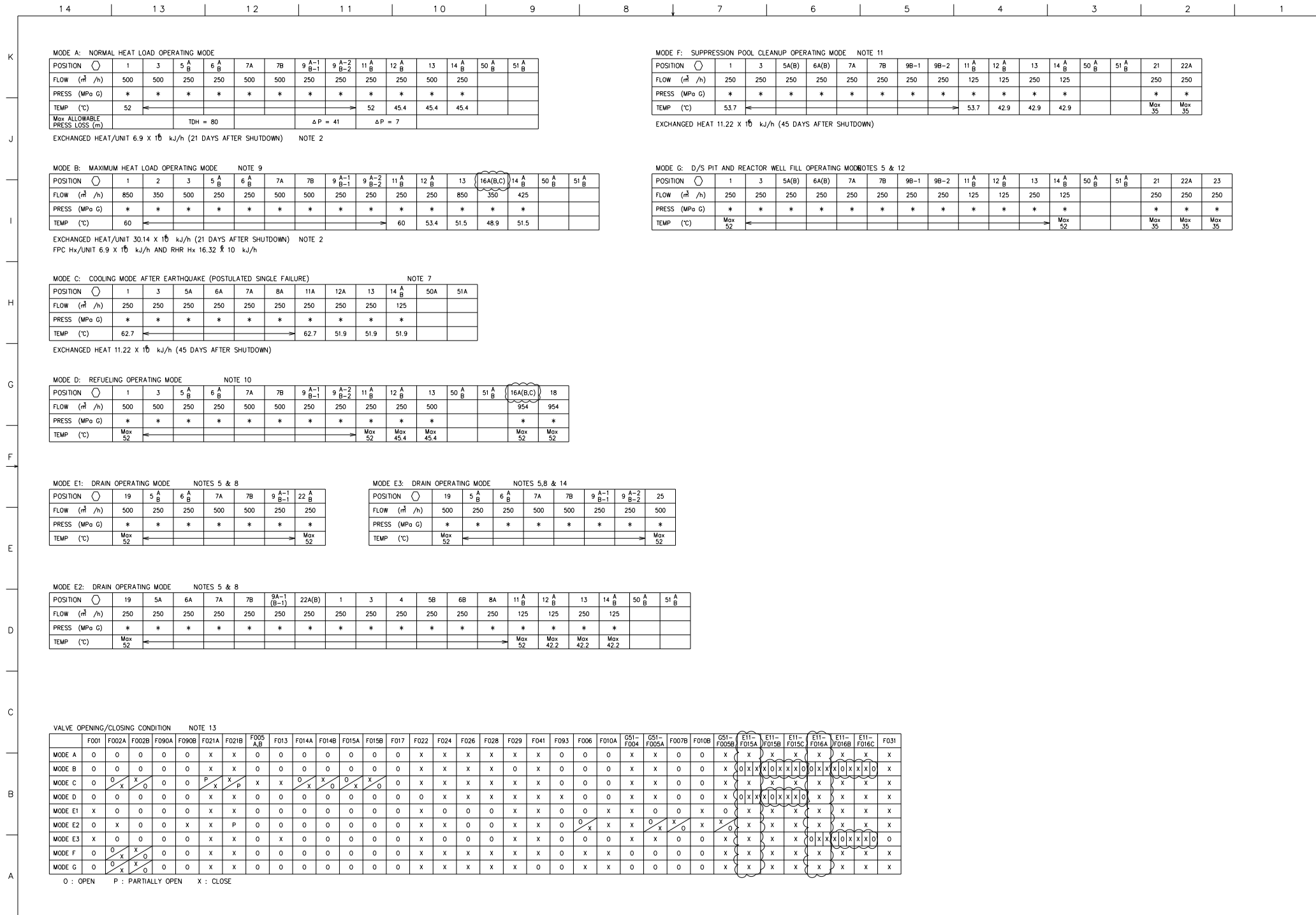


Figure 9.1-2 – Fuel Pool Cooling and Cleanup System PFD (Sheet 2 of 2)

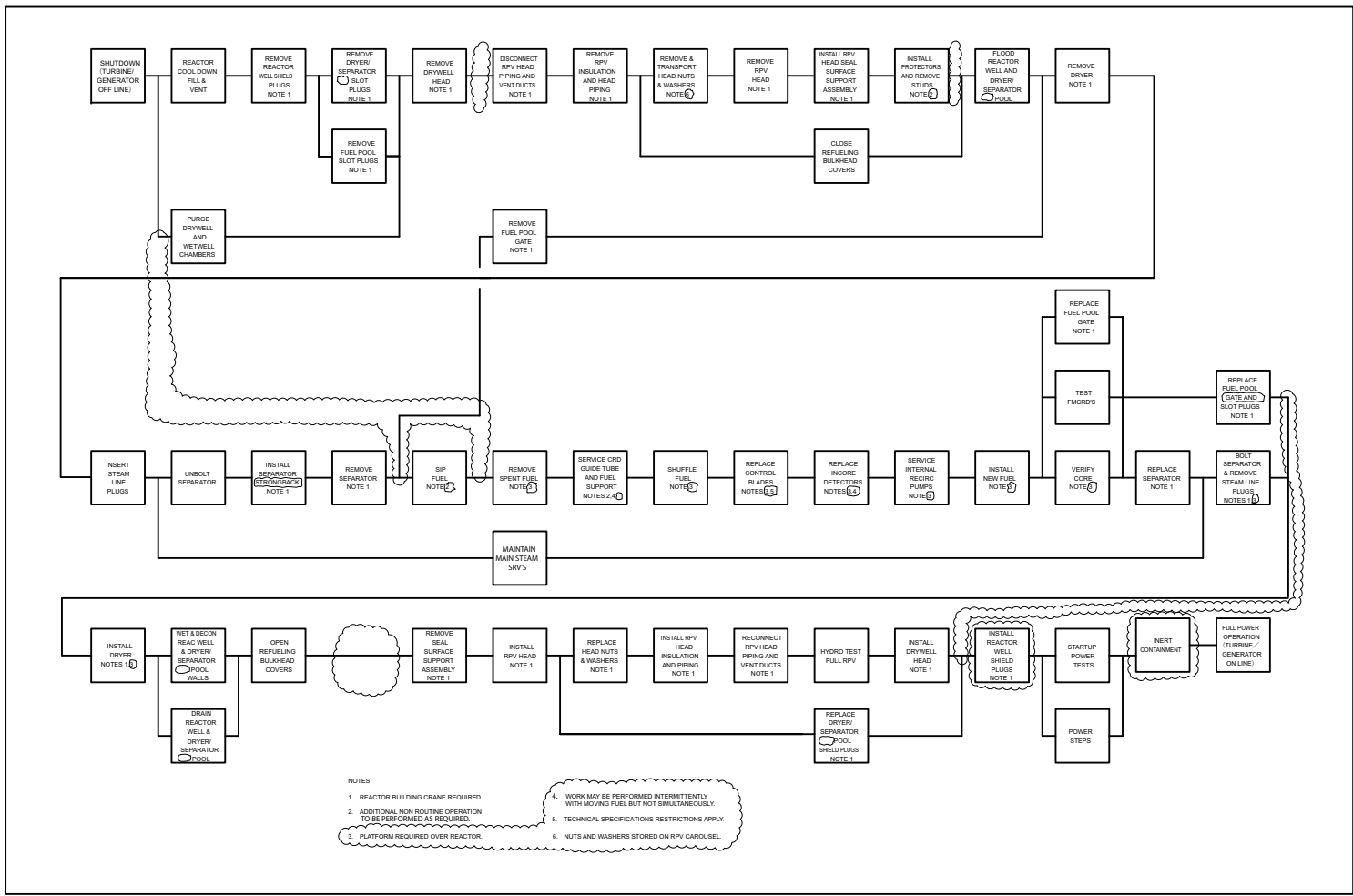


Figure 9.1-12 – Plant Refueling And Servicing Sequence

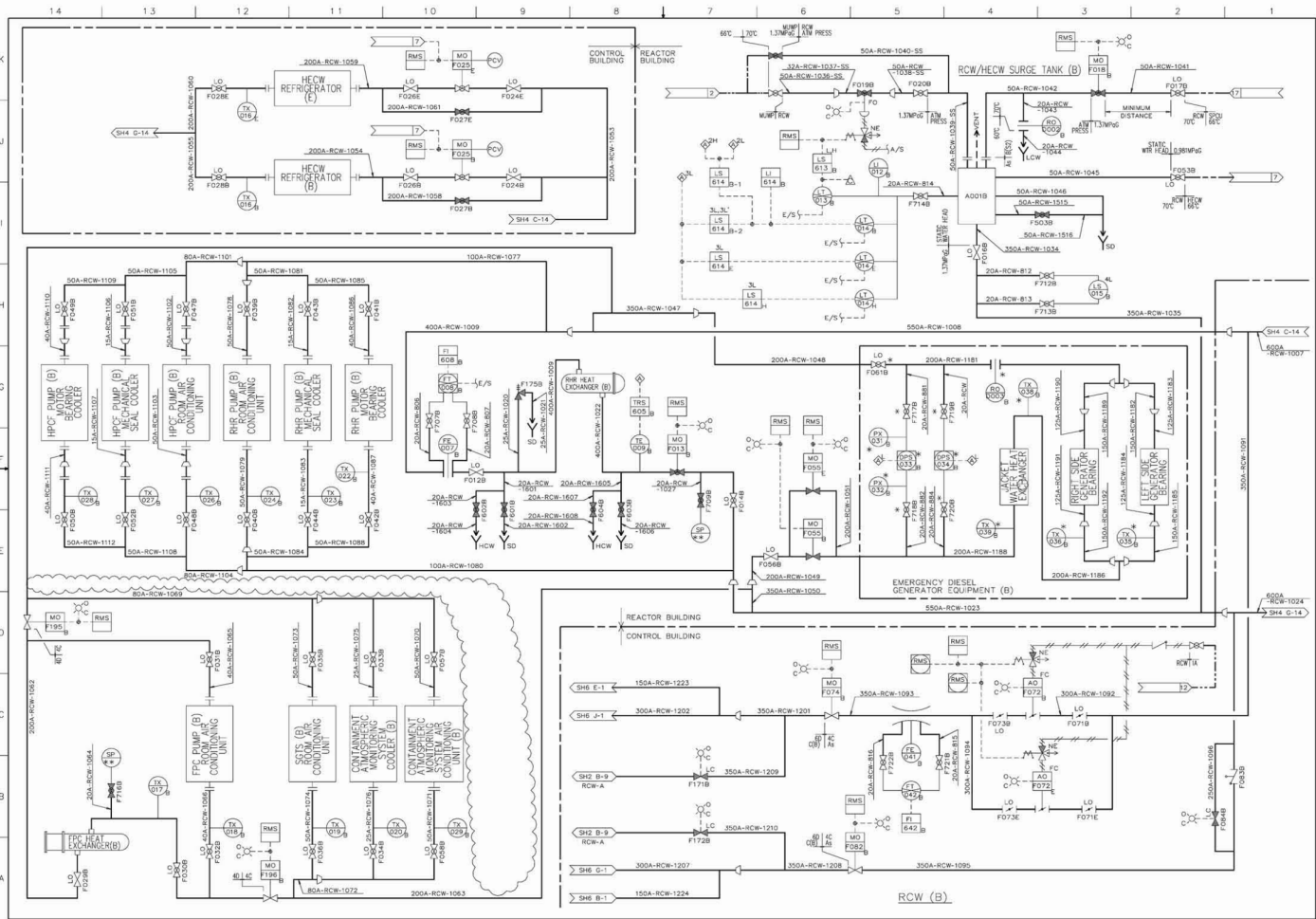


Figure 9.2-1 – Reactor Building Cooling Water System P&ID (Sheet 5 of 9)

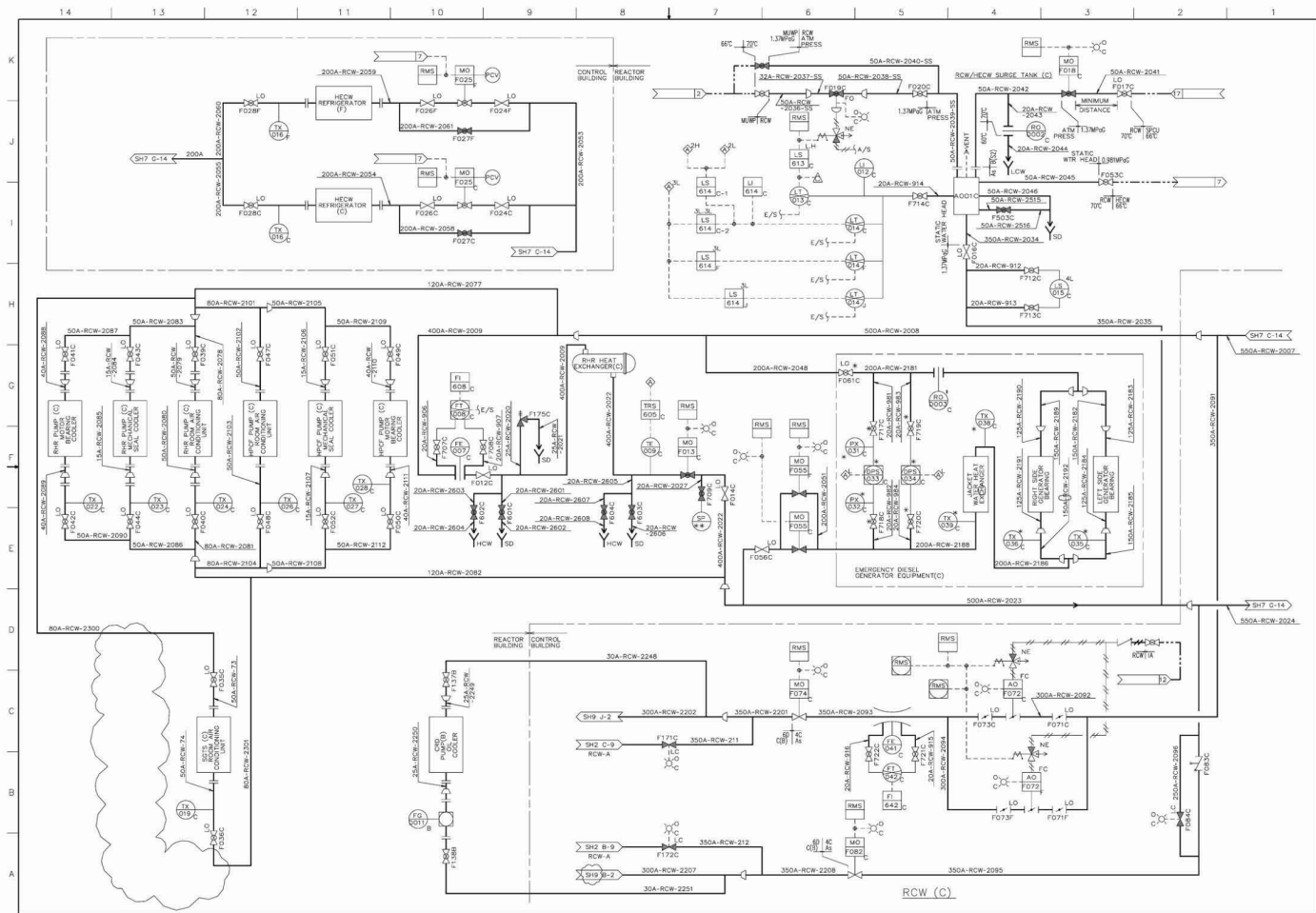


Figure 9.2-1 – Reactor Building Cooling Water System P&ID (Sheet 8 of 9)

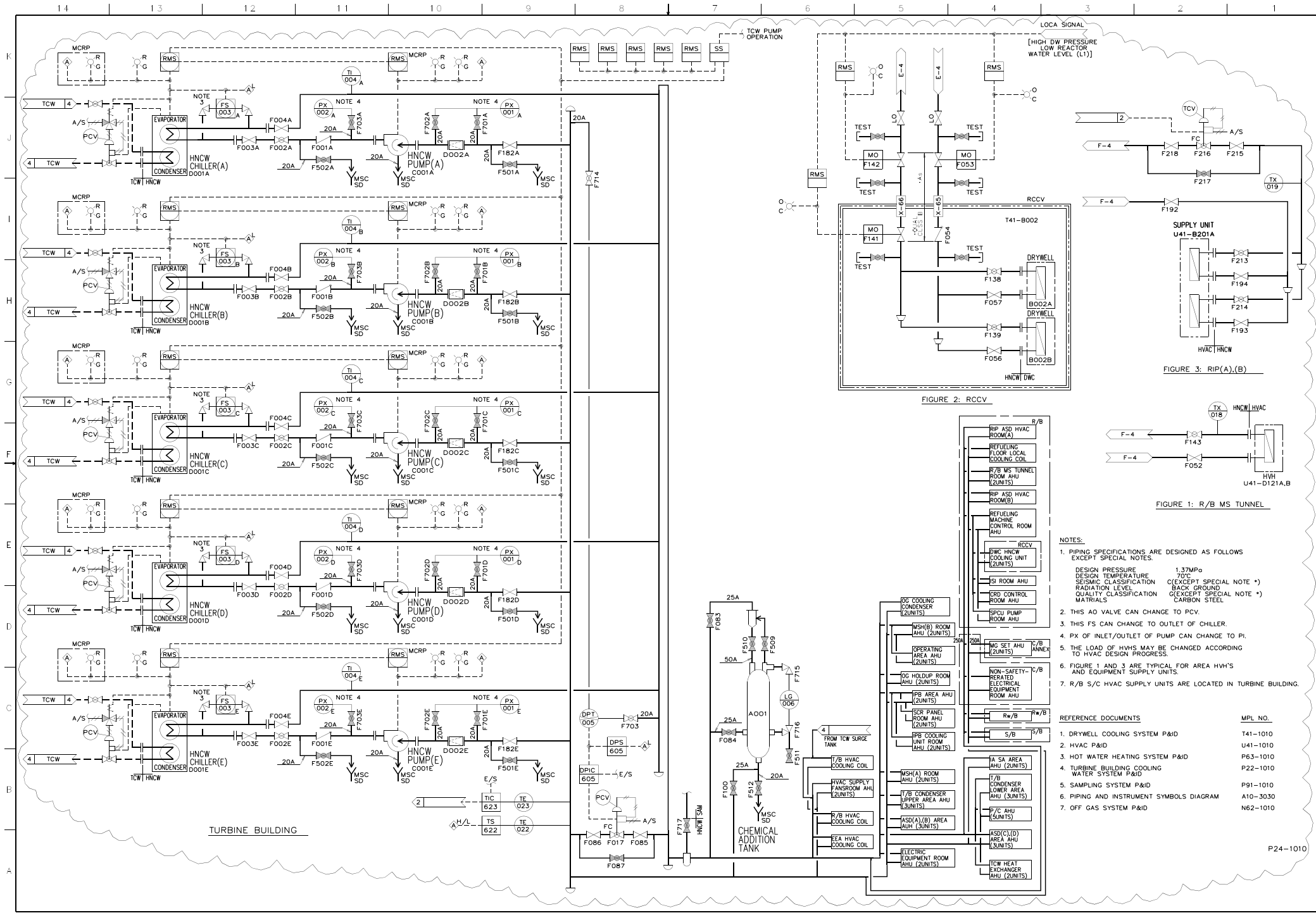


Figure 9.2-2 – Hvac Normal Cooling Water System P&ID

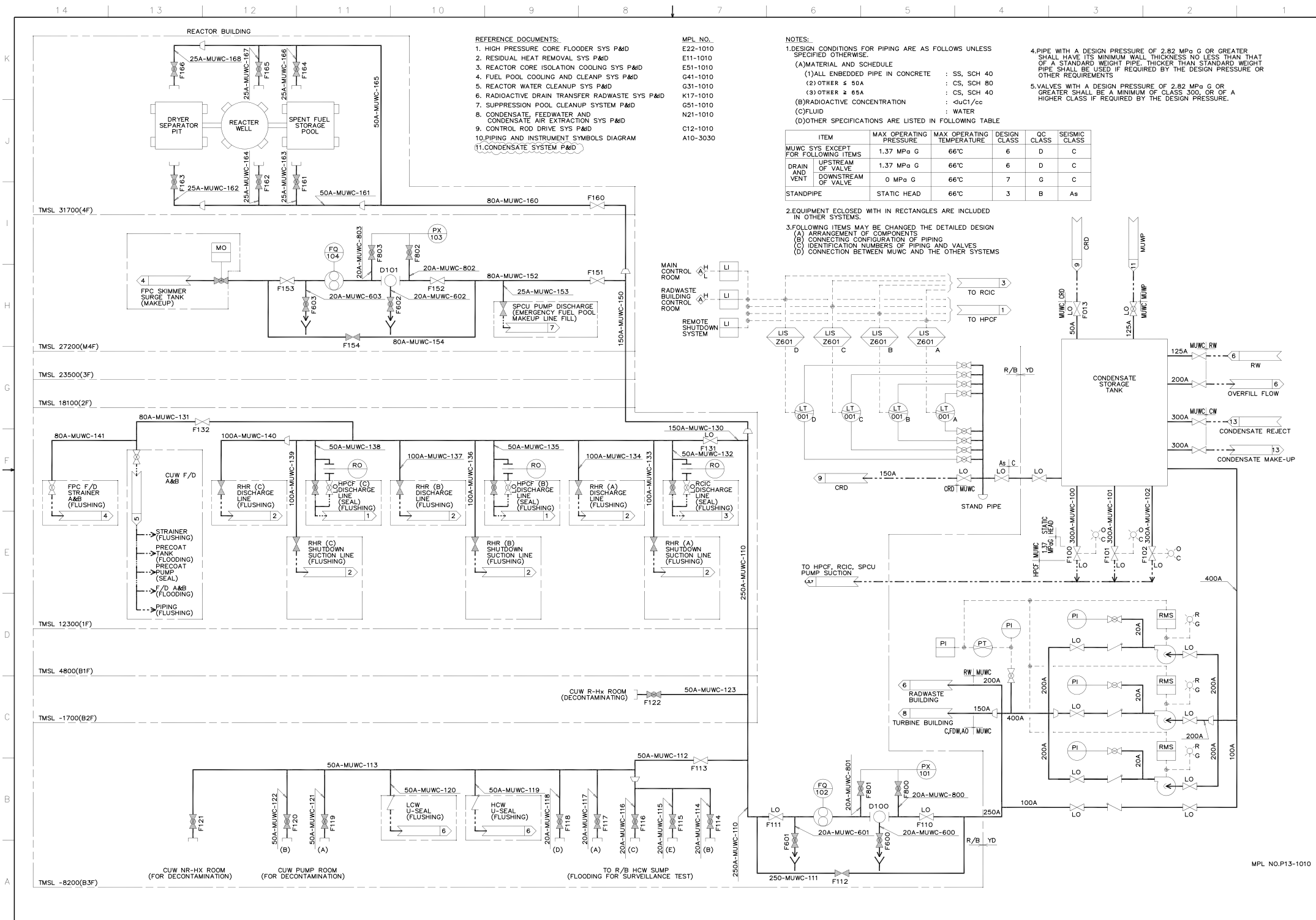


Figure 9.2-4 – Makeup Water System (Condensate) P&ID (Sheet 1 of 1)

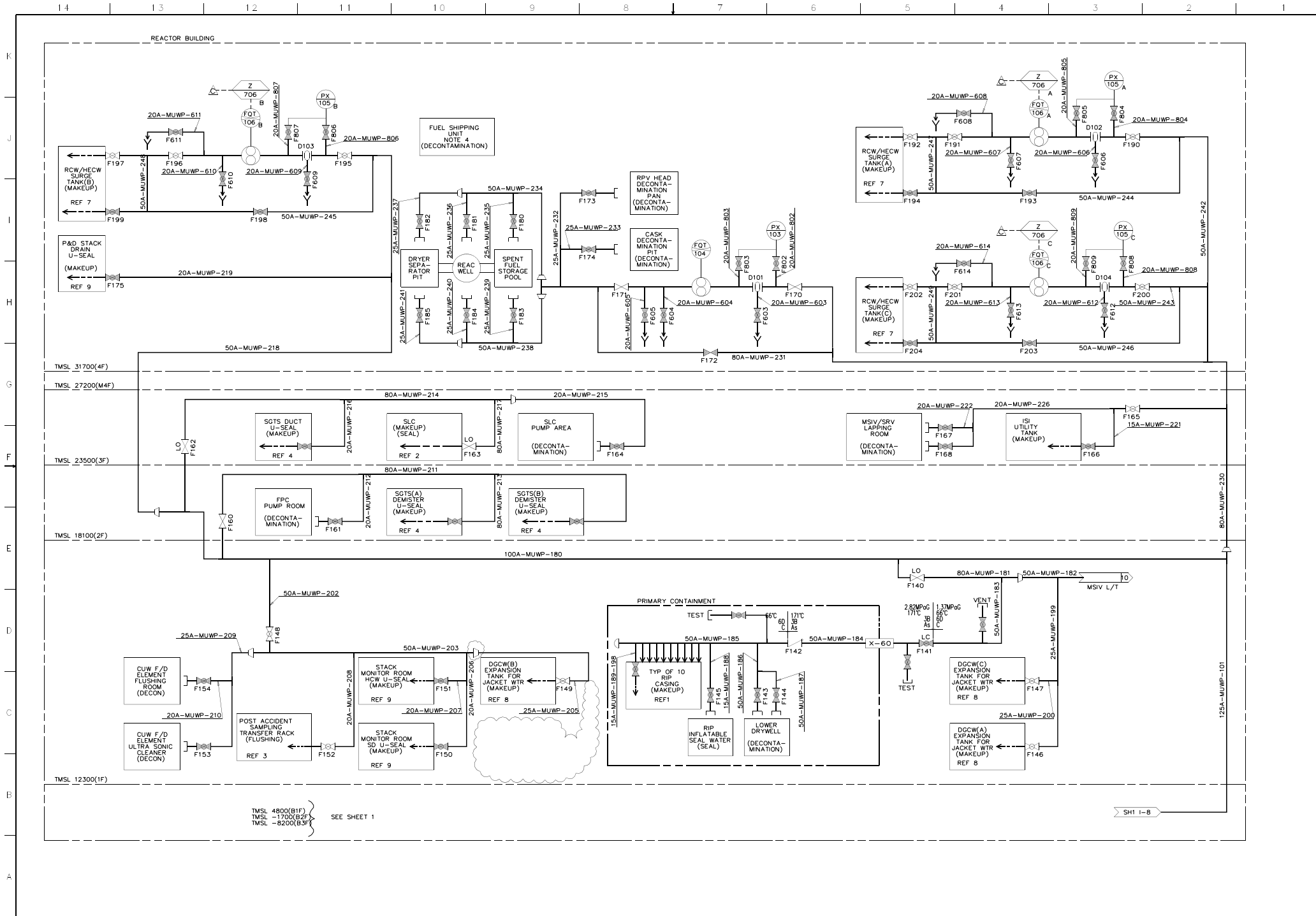
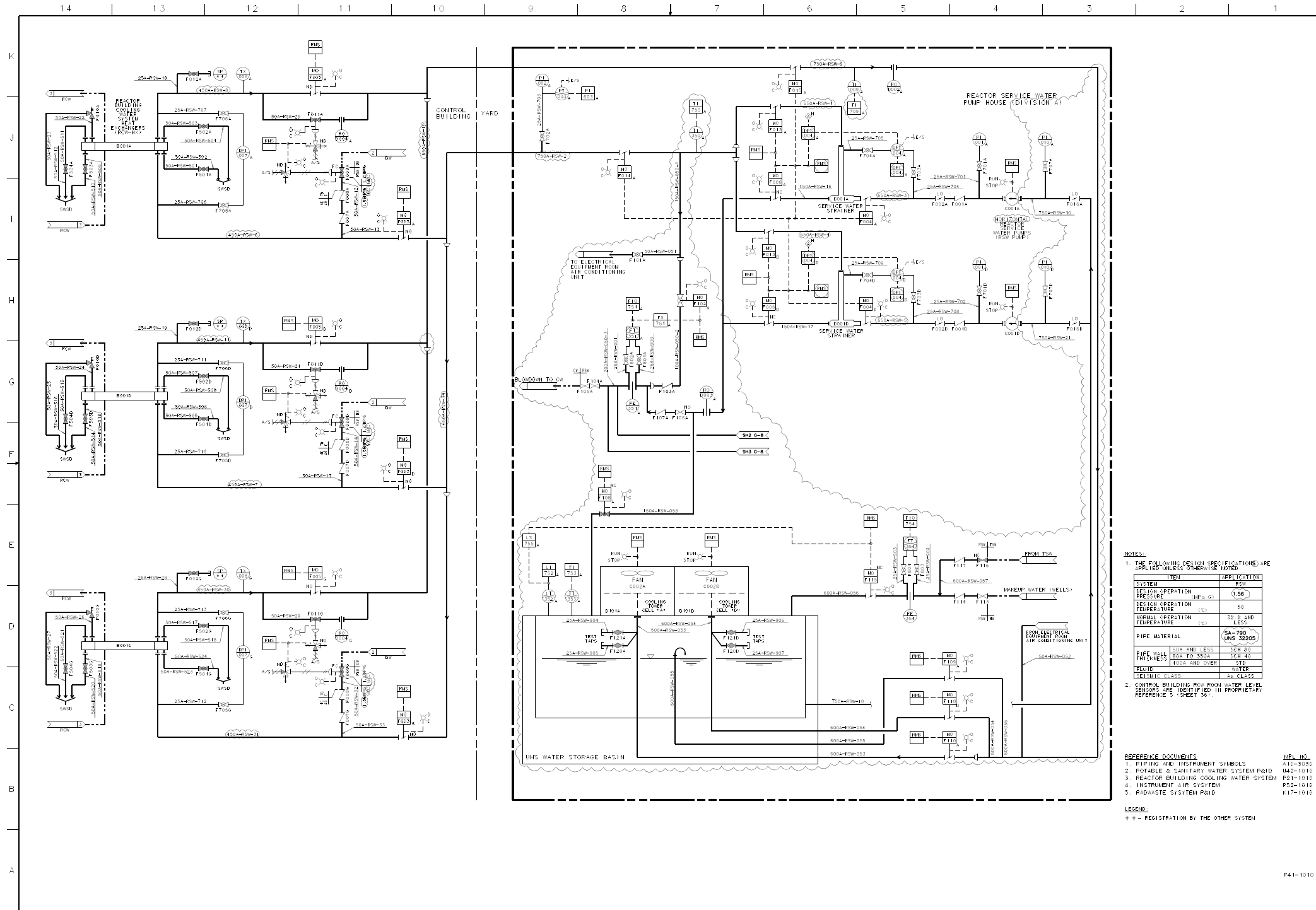


Figure 9.2-5 – Makeup Water System (Purified) P&ID (Sheet 2 of 3)



NOTES:
 1. THE FOLLOWING DESIGN SPECIFICATIONS ARE APPLIED UNLESS OTHERWISE NOTED:

SYSTEM	TYPE	APPLICATION
DESIGN OPERATION	PSI	156
PRESSURE	MEASUREMENT	50
DESIGN OPERATION	TEMPERATURE	32.0 AND LESS
TEMPERATURE	TEMPERATURE	32.0 AND LESS
PIPE MATERIAL		SA-790 (UNS 32205)
PIPE WALL THICKNESS	3/4" AND LESS	SCH 80
	3/4" TO 3.50"	SCH 40
	4.00" AND OVER	STD.
RELIEF VALVE		STD.
CONTROL BUILDING ROOM WATER LEVEL SENSORS		AS CLASS 50

2. CONTROL BUILDING ROOM WATER LEVEL SENSORS ARE IDENTIFIED IN PROPRIETARY REFERENCE 5 SHEET 36.

REFERENCE DOCUMENTS:

NO.	DESCRIPTION	REF. NO.
1.	PIPING AND INSTRUMENT SYMBOLS	410-3350
2.	POTABLE & SANITARY WATER SYSTEM P&ID	042-1010
3.	REACTOR BUILDING COOLING WATER SYSTEM	P21-1010
4.	INSTRUMENT AIR SYSTEM	P22-1010
5.	RADWASTE SYSTEM P&ID	117-1010

LEGEND:
 1 - REGISTRATION BY THE OTHER SYSTEM

P41-1010

Figure 9.2-7 – Reactor Service Water System P&ID (Sheet 1 of 3)

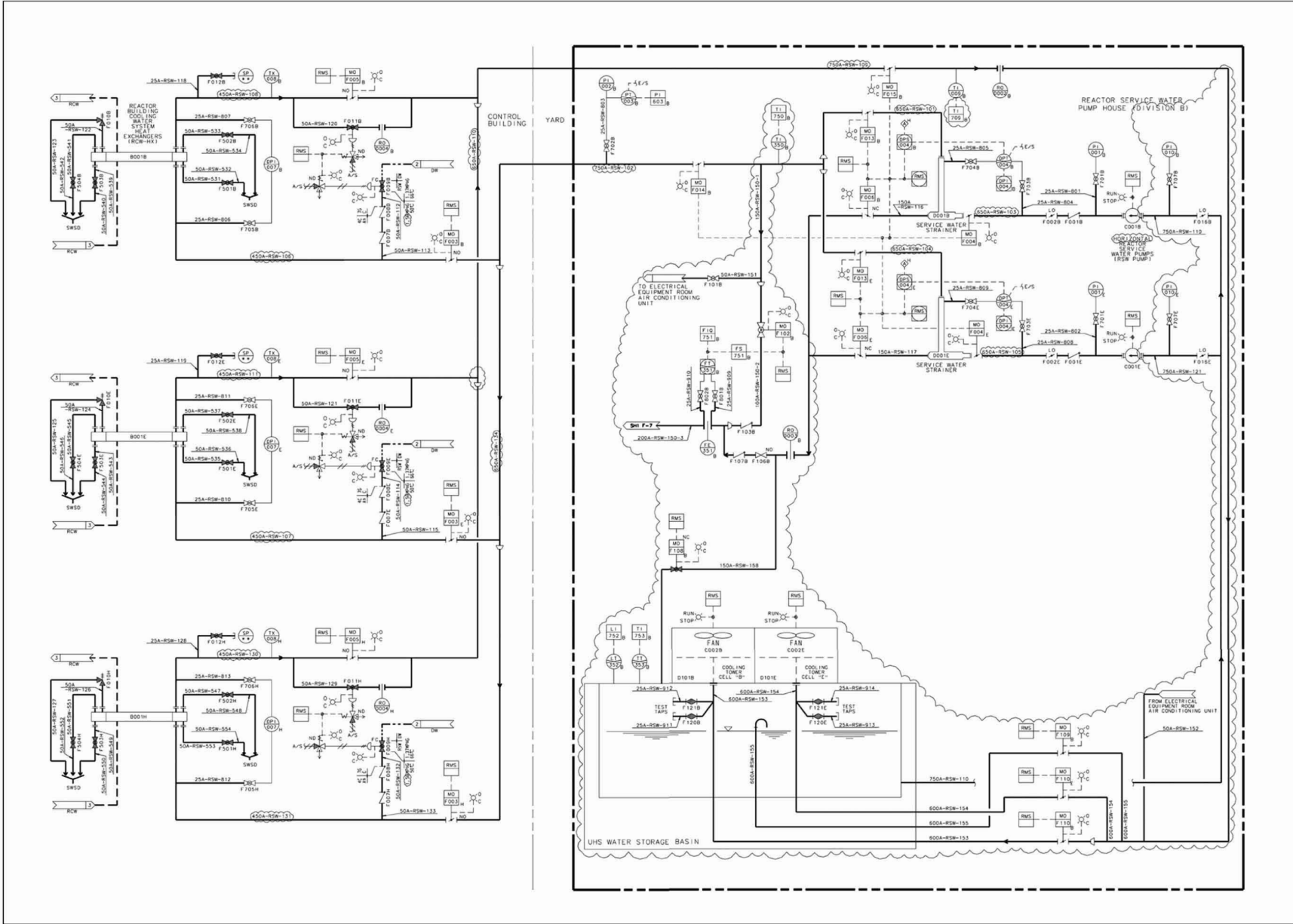


Figure 9.2-7 – Reactor Service Water System P&ID (Sheet 2 of 3)

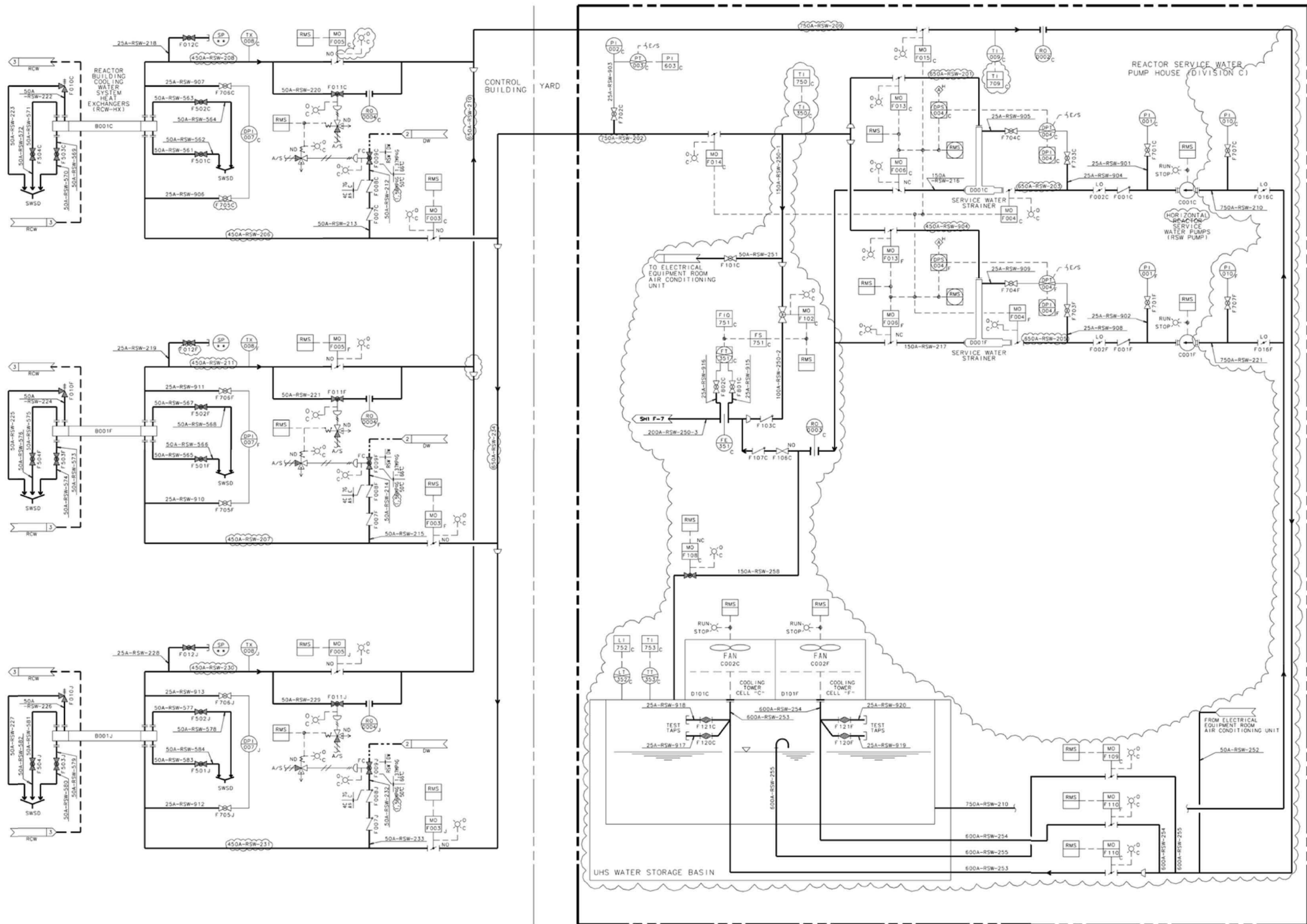


Figure 9.2-7 – Reactor Service Water System P&ID (Sheet 3 of 3)

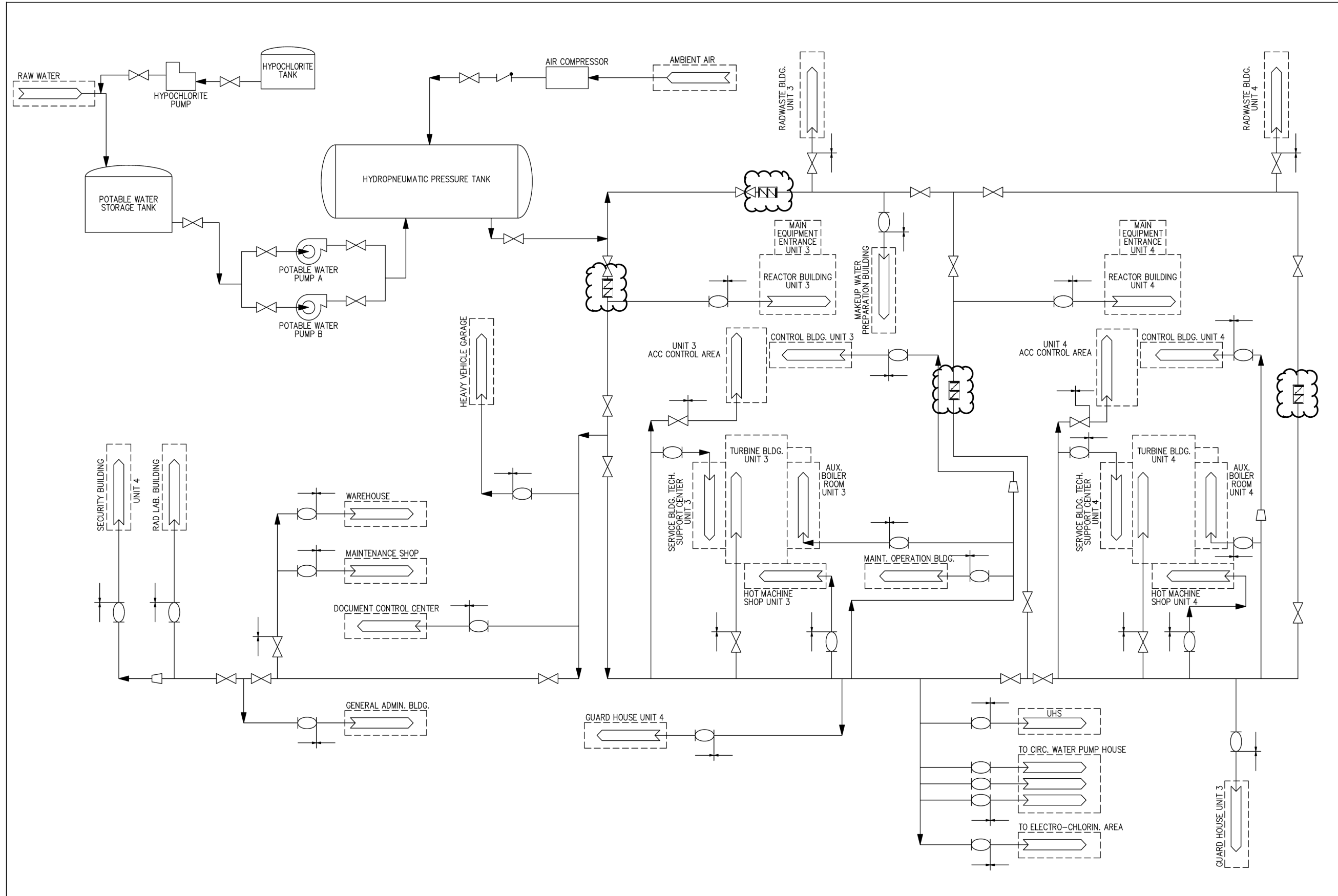


Figure 9.2-9 – Potable and Sanitary Water System P&ID (Sheet 2 of 2)