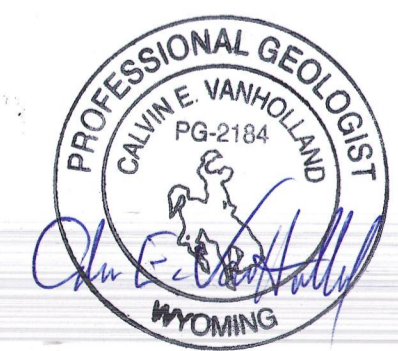
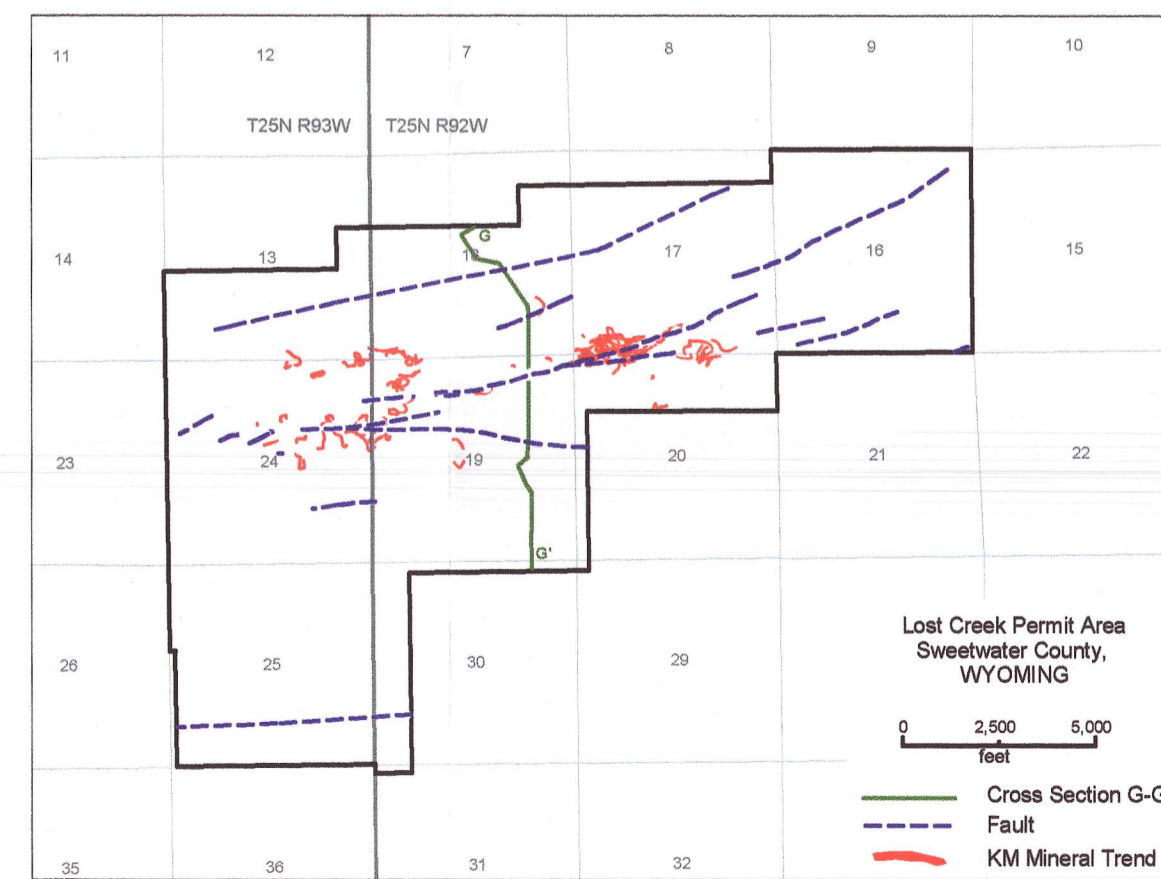
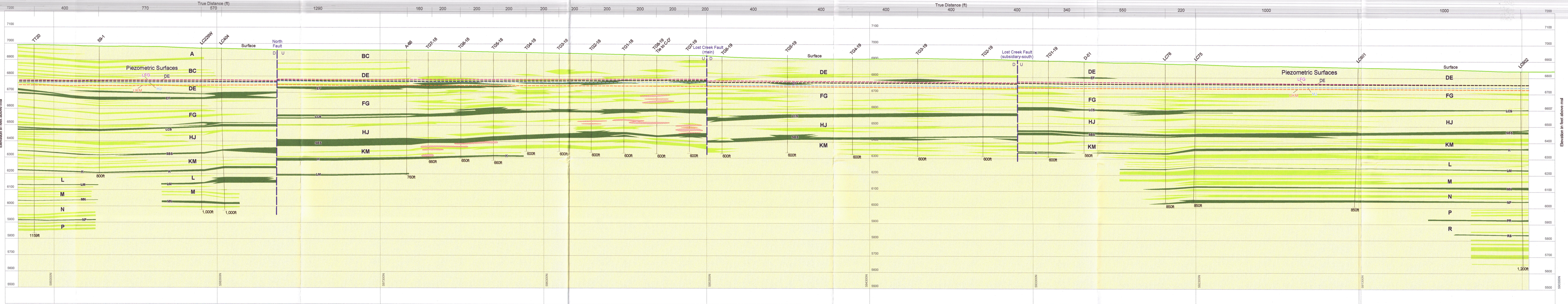



G
North

G'
South




Lost Creek ISR, LLC
 Casper, Wyoming, USA

Legend
 Mineralization
 Aquitard
 Unnamed Named
 Sand

Cross Section projected onto N-S vertical plane

PLATE D5-2f
Cross Section G-G' (North-South)
Lost Creek Permit Area

Issued For: WDEQ-LQD1.0 By: CVH / MF
 Issued/Revised: 10.11.07 / 06.04.13

1" = 250' (no vertical exaggeration)

Piezometric surfaces as illustrated are interpolated from corresponding regional piezometric surface contour maps.