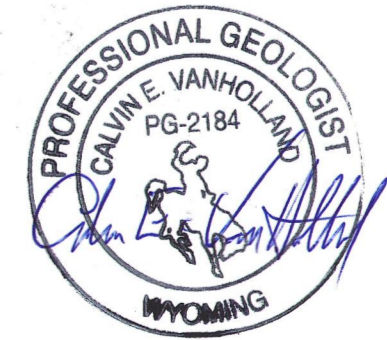
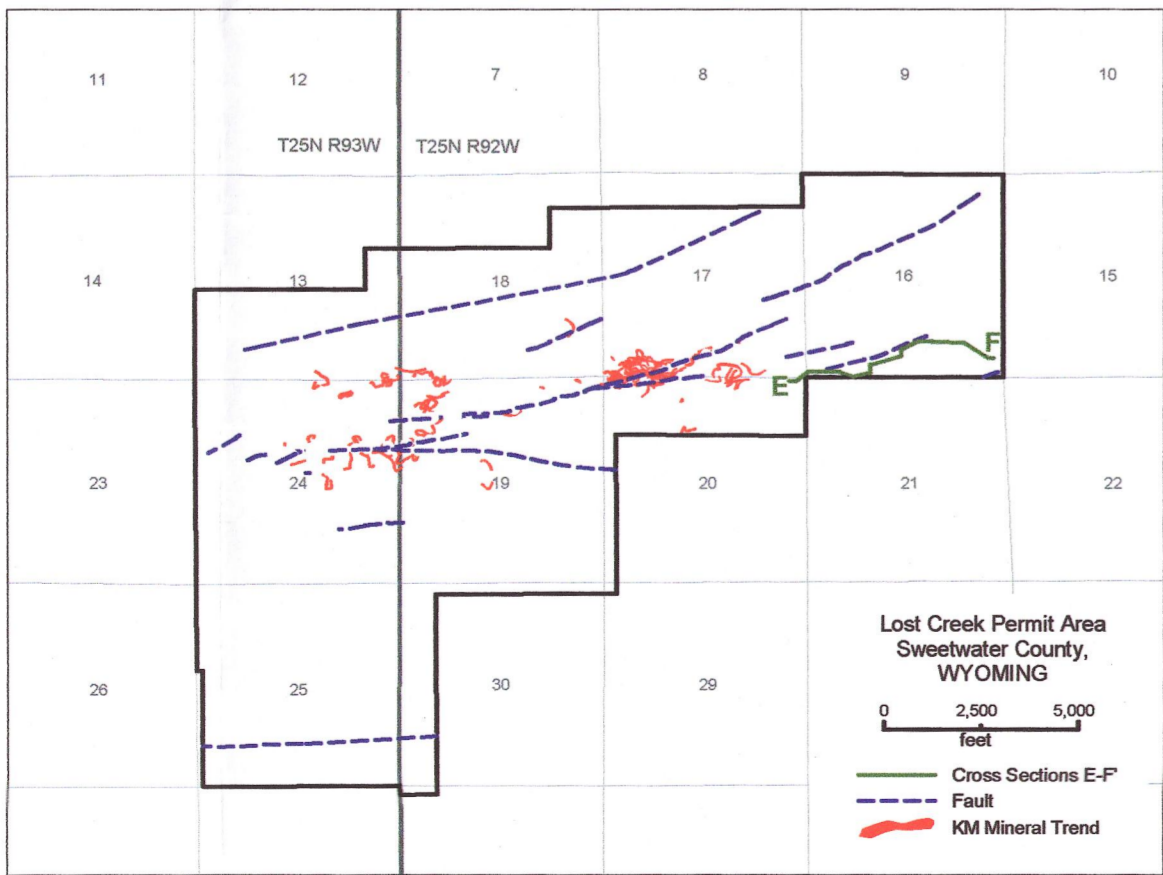
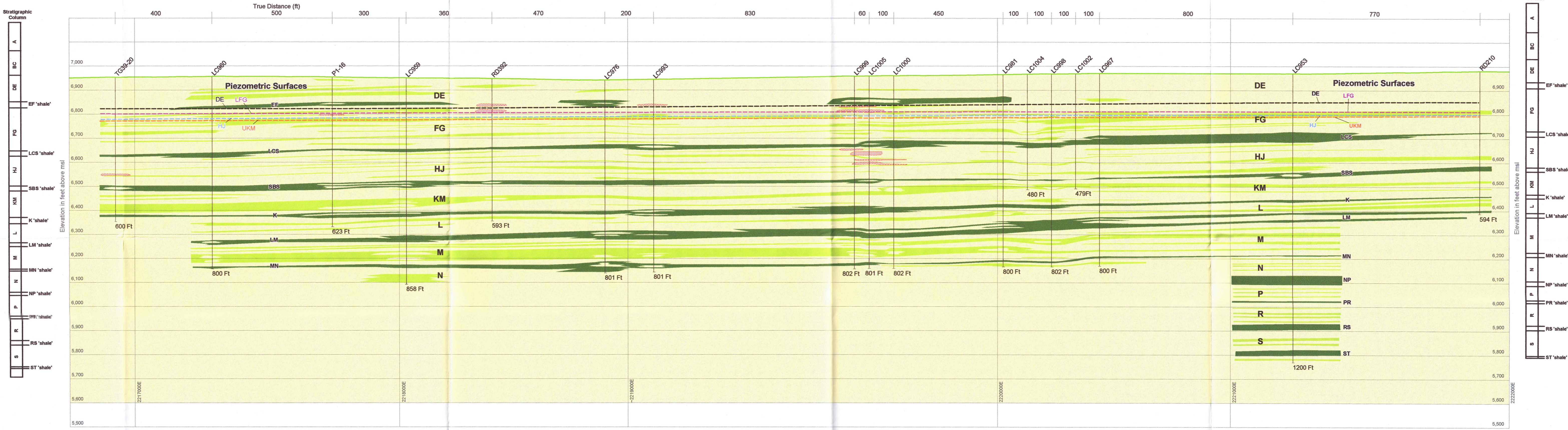


E West

F East



**Lost Creek ISR, LLC**  
Casper, Wyoming, USA

**Legend**

Mineralization  
 Aquitard  
 Unnamed  
 Named  
 Sand

**PLATE D5-2d**  
Cross Section E-F (East-West)  
Lost Creek Permit Area

Issued For: WDEQ-LQD1.0 By: CVH / MF  
 Issued/Revised: 05.29.13

0 200 feet (no vertical exaggeration)

Piezometric surfaces as illustrated are interpolated from corresponding regional piezometric surface contour map.