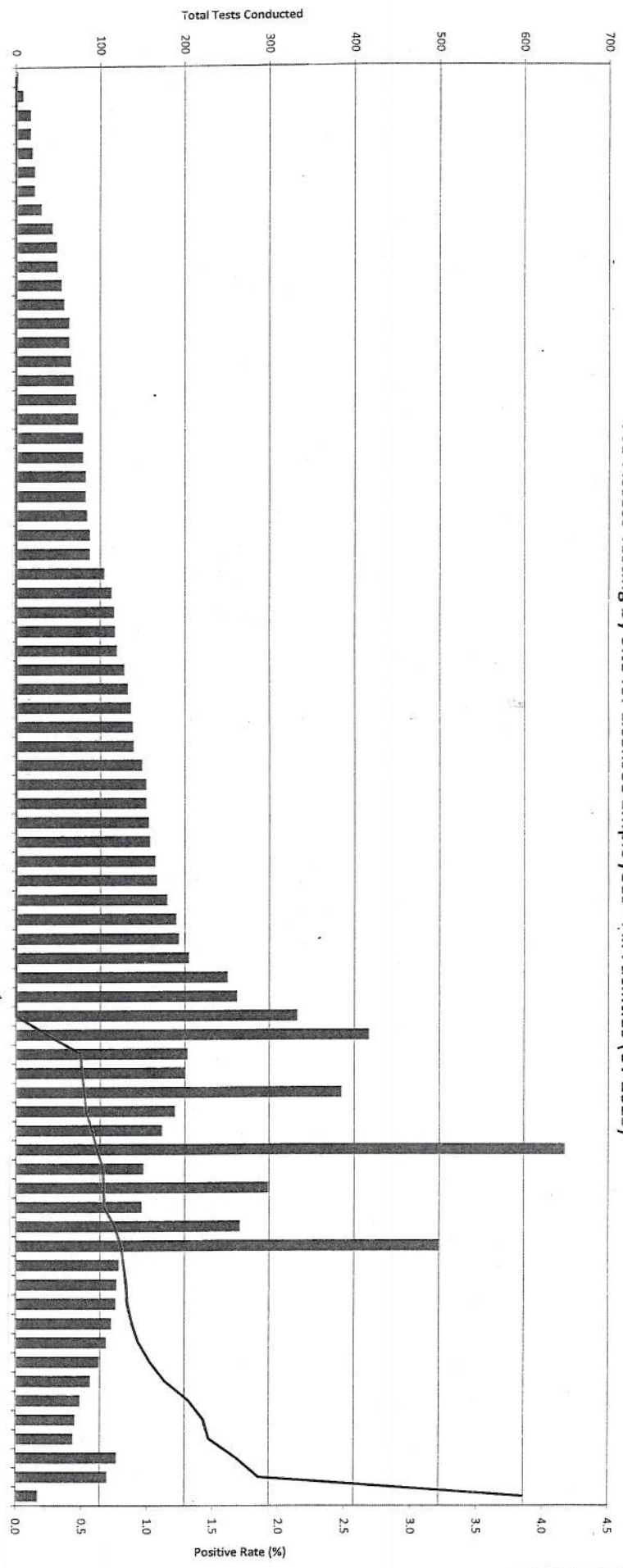


Pre-Access Testing by Site for Licensee Employees - All Facilities (CY 2013)

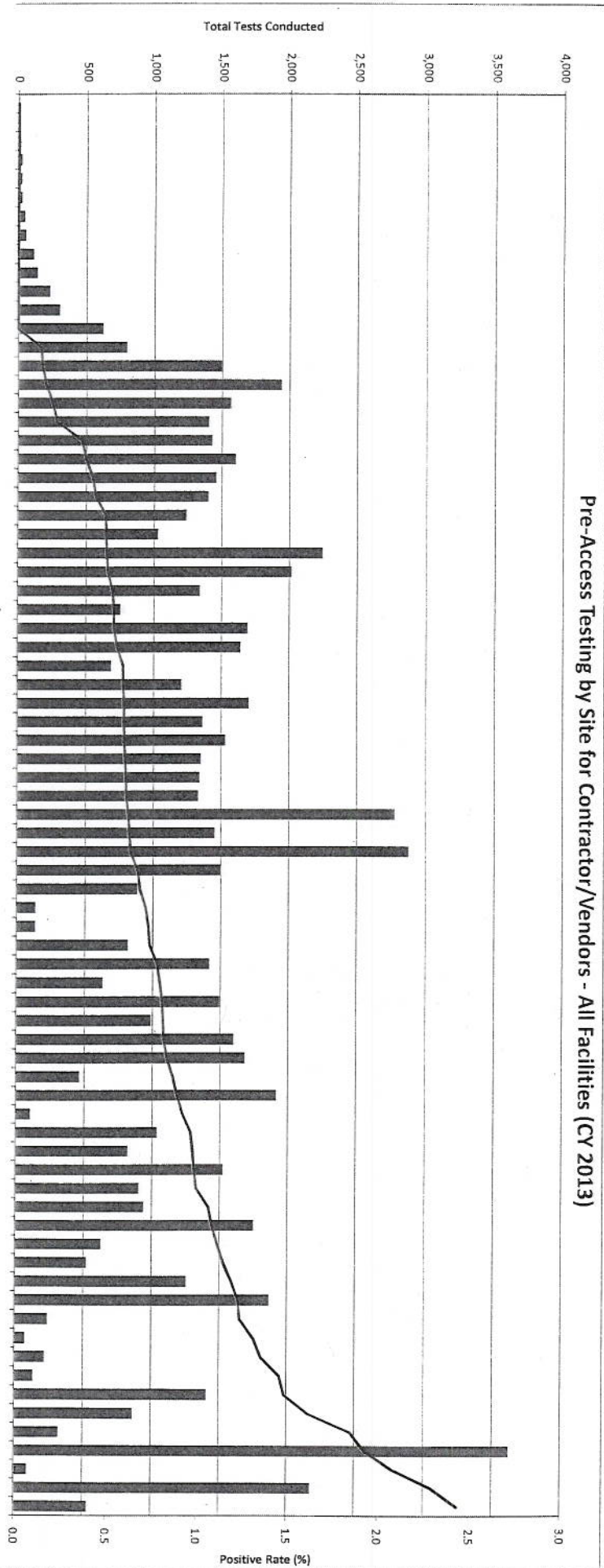


Predecisional Draft Data - NRC provided - July 2014

Legend: Total Pre-Access Tests, Pre-Access Positive Rate

Only facilities that conducted at least one pre-access test are included.

Pre-Access Testing by Site for Contractor/Vendors - All Facilities (CY 2013)

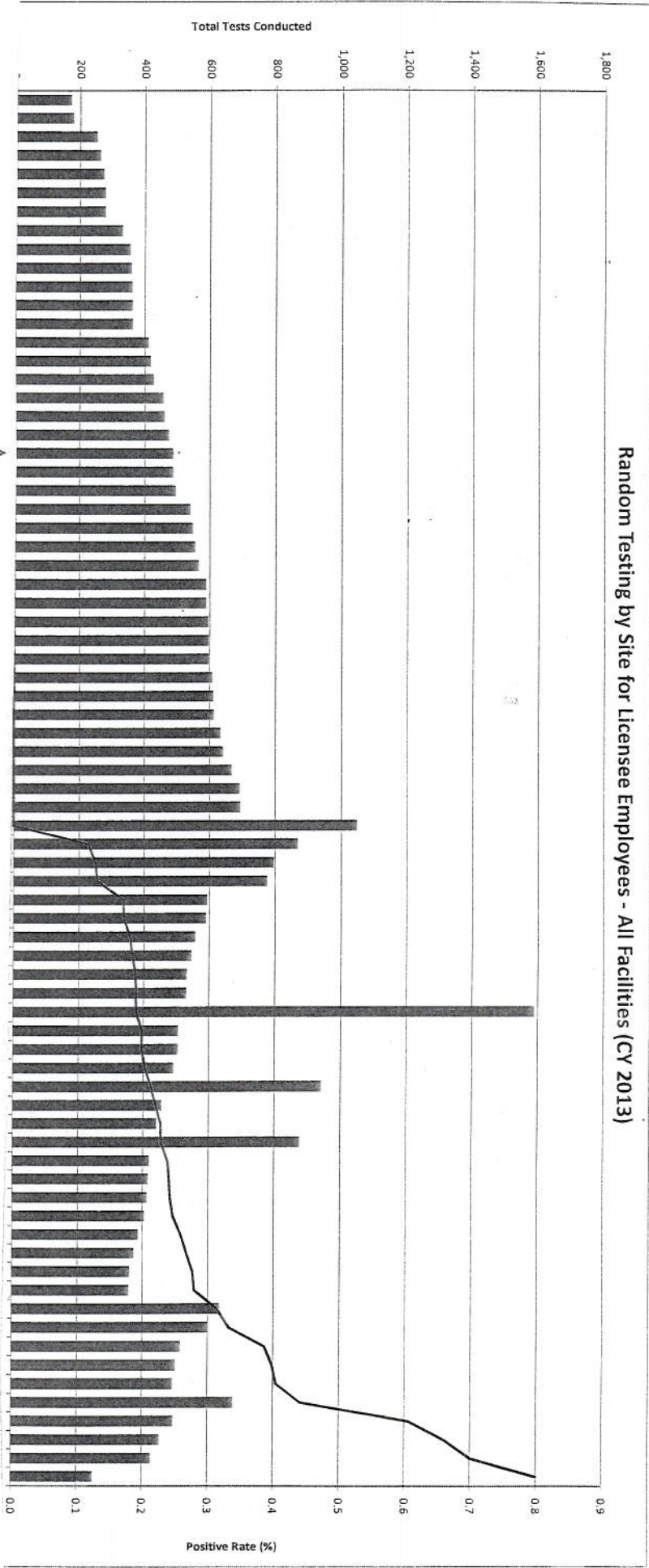


Predecisional Draft Data - NRC provided - July 2014

Total Pre-Access Tests
  Pre-Access Positive Rate

Only facilities that conducted at least one pre-access test are included.

### Random Testing by Site for Licensee Employees - All Facilities (CY 2013)

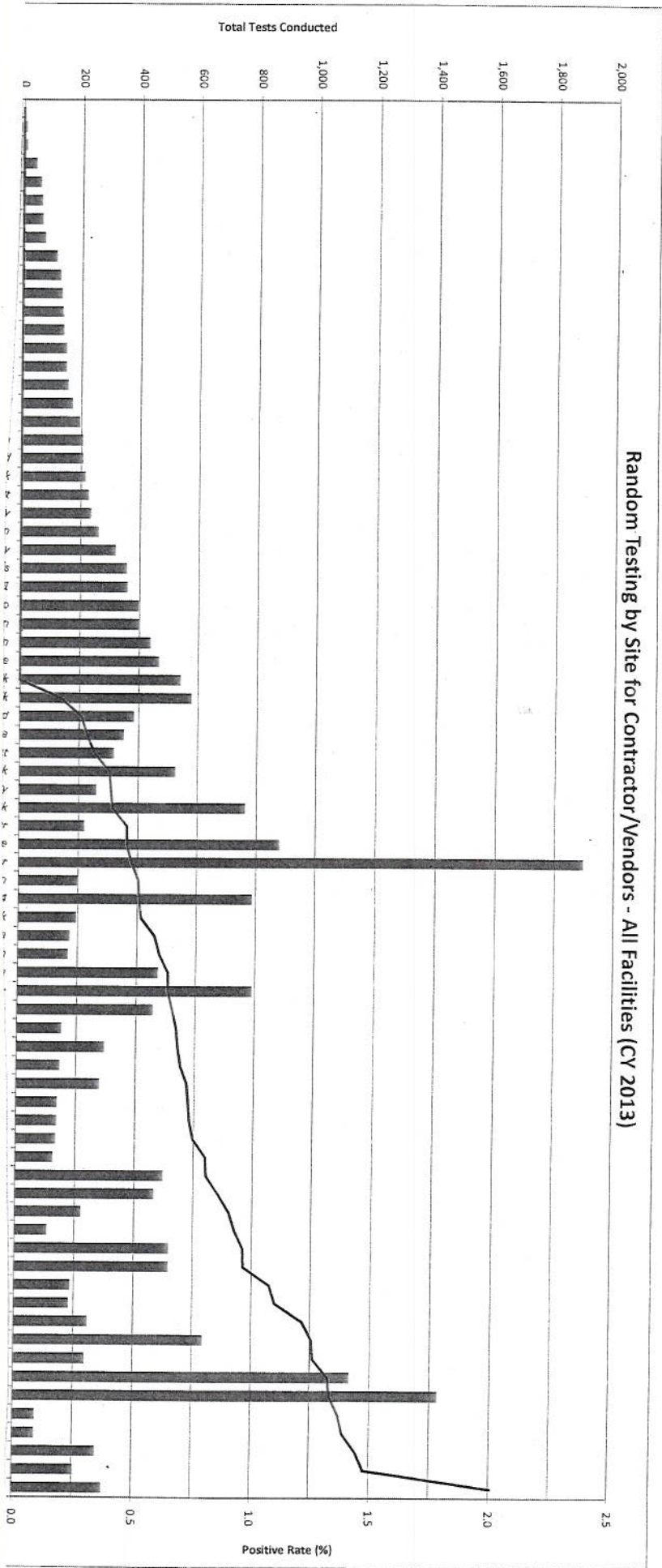


Predecisional Draft Data - NRC provided - July 2014

Total Random Tests  
 Random Positive Rate

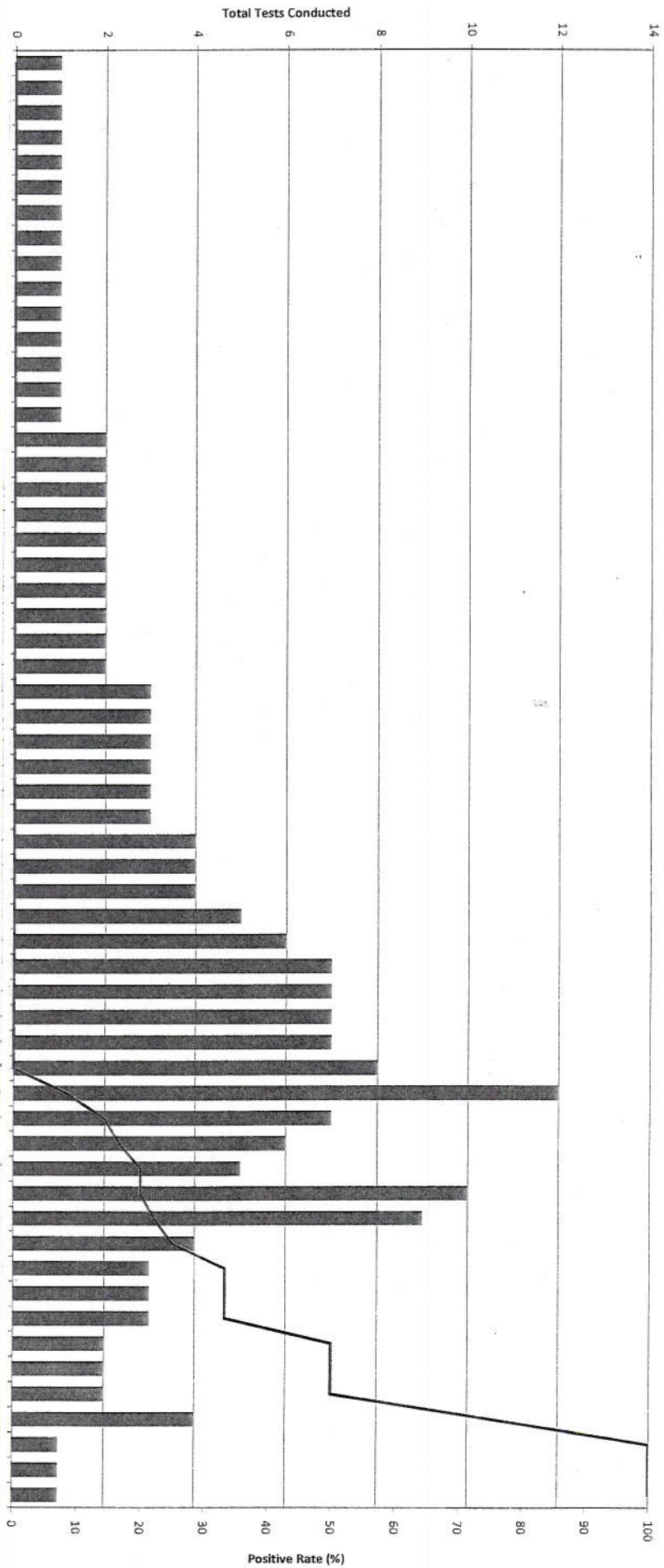
Only facilities that conducted at least one random test are included.

### Random Testing by Site for Contractor/Vendors - All Facilities (CY 2013)





For Cause Testing by Site for Licensee Employees - All Facilities (CY 2013)



Predecisional Draft Data - NRC provided - July 2014

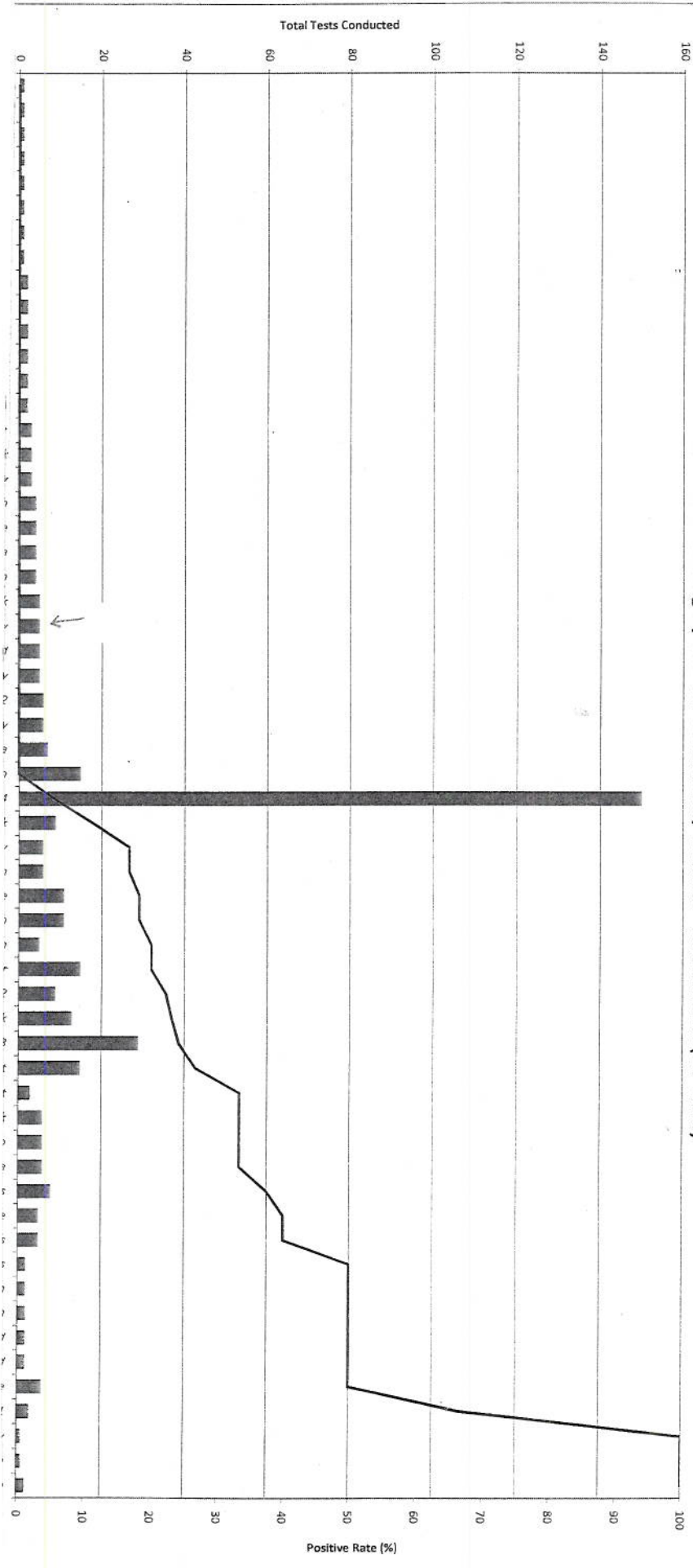


Only facilities that conducted at least one for cause test are included.

Bab

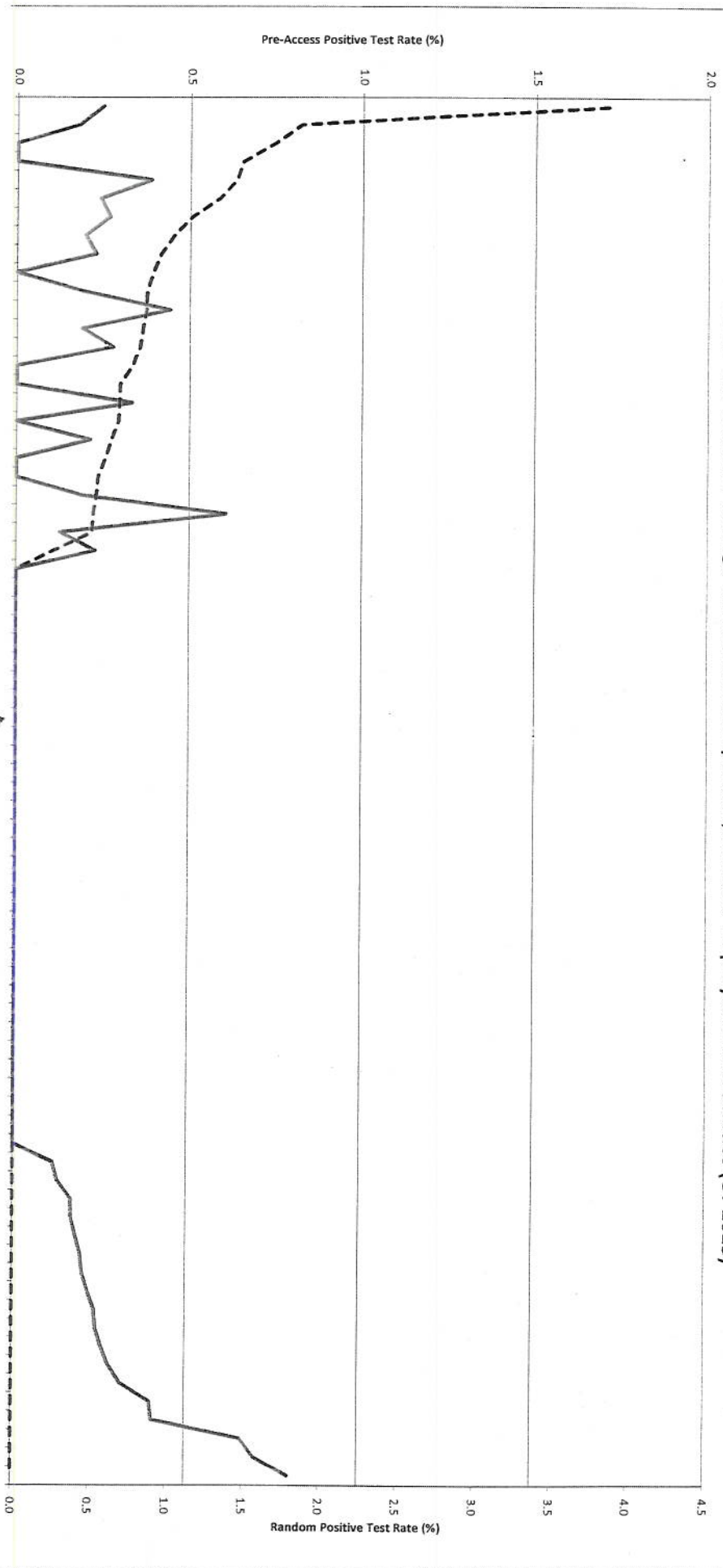
Callaway

For Cause Testing by Site for Contractor/Vendors - All Facilities (CY 2013)



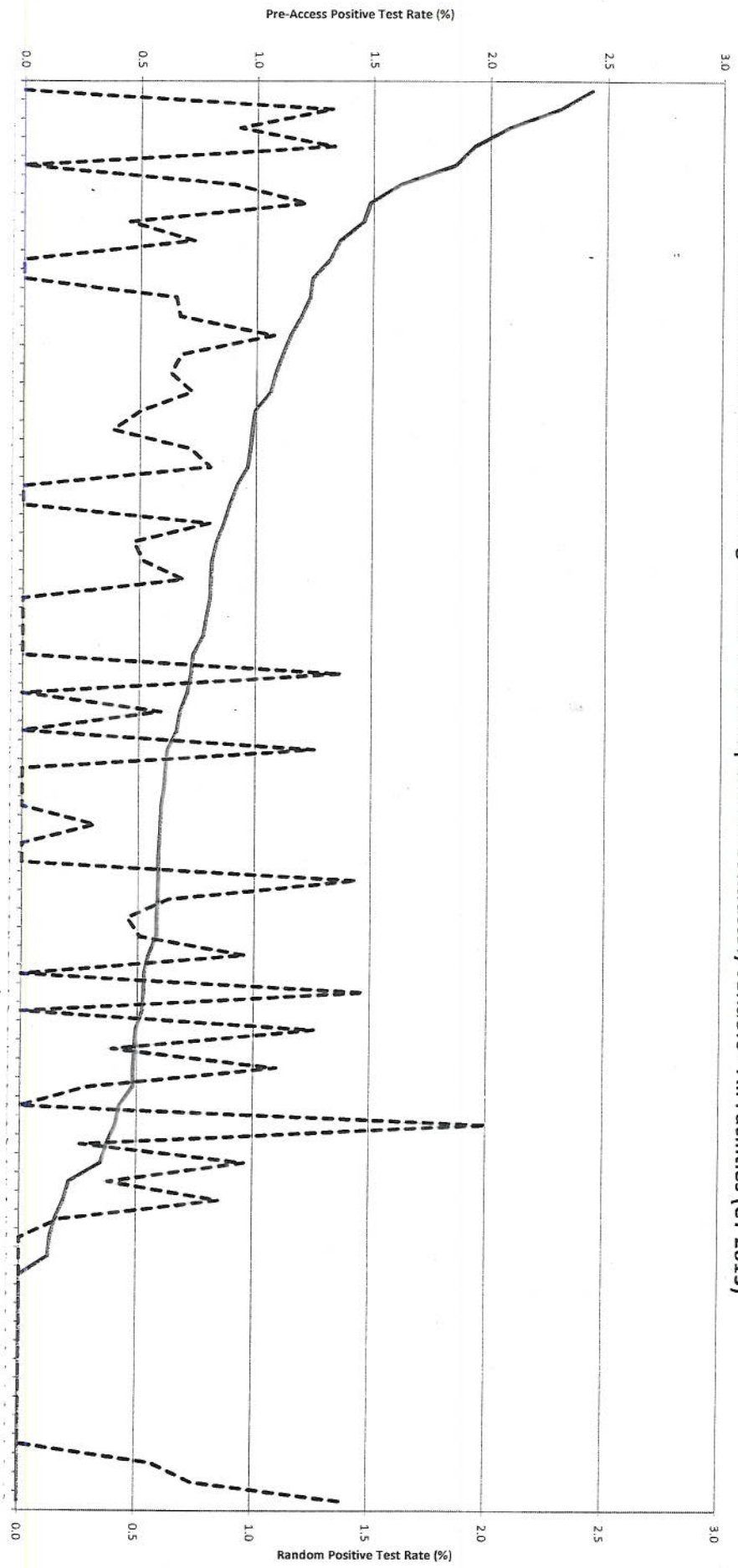
Precedential Data Only - Not for

Pre-Access and Random Testing Positive Rate Comparison, Licensee Employees - All Facilities (CY 2013)



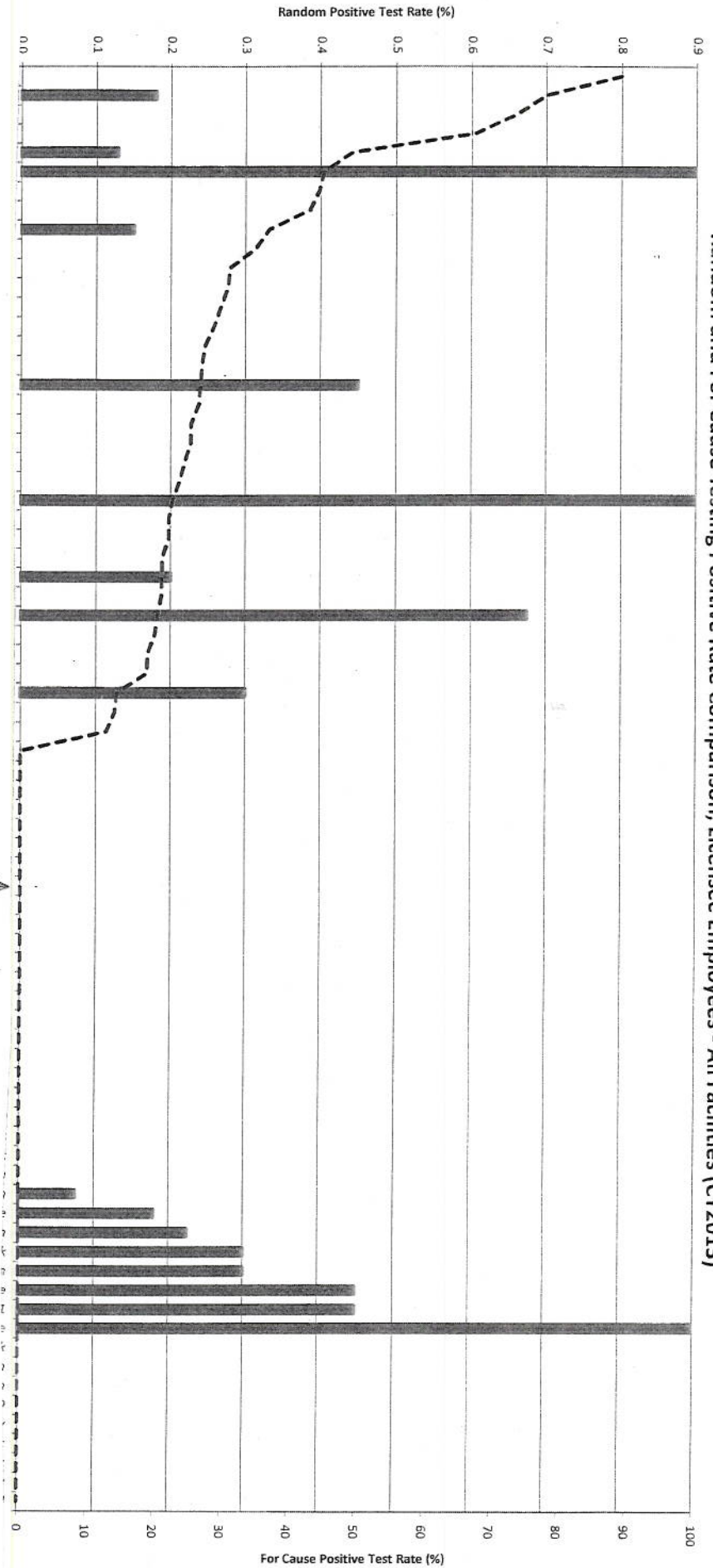
Pre-Access Positive Rate Random Positive Rate

Pre-Access and Random Testing Positive Rate Comparison - Contractor/Vendors - All Facilities (CY 2013)





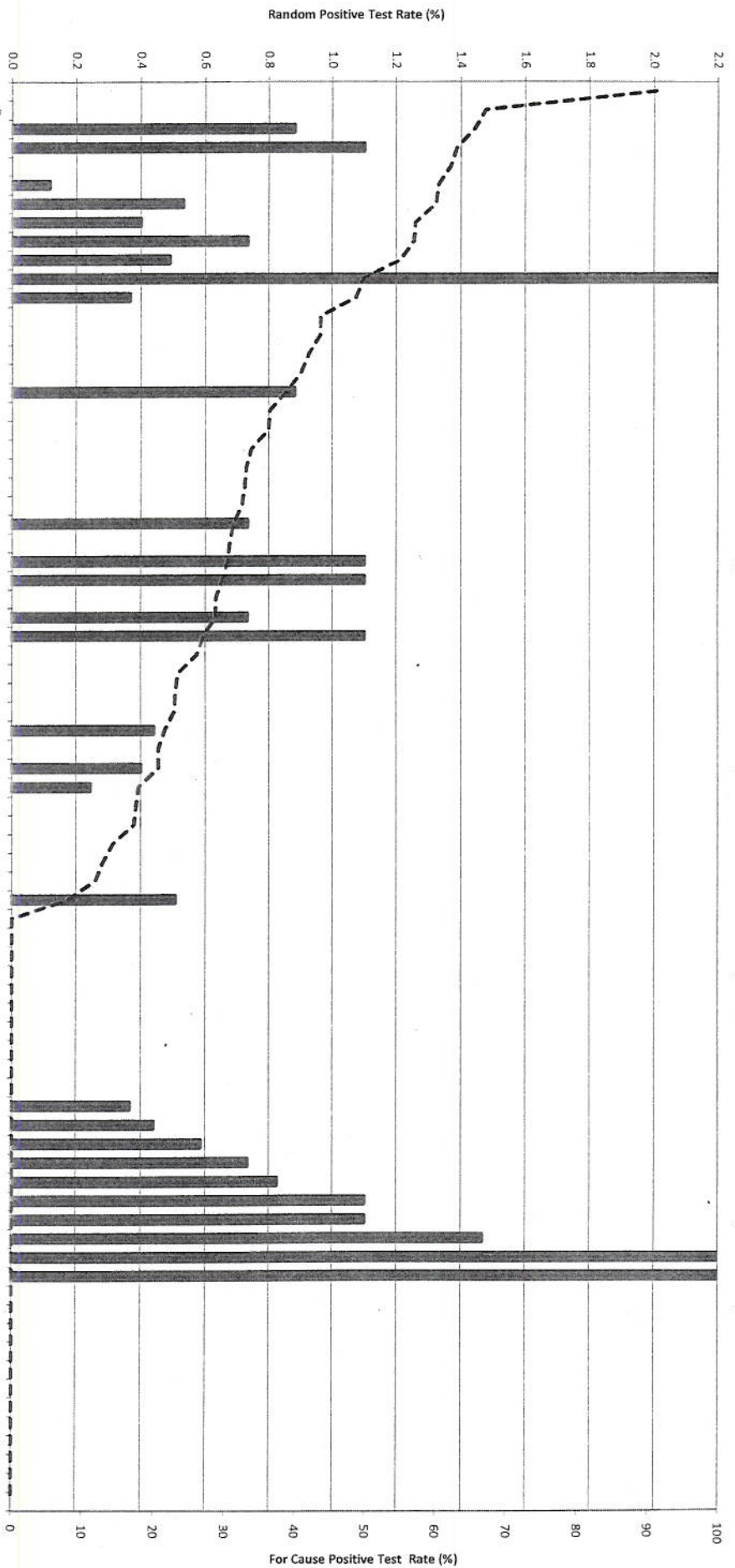
# Random and For Cause Testing Positive Rate Comparison, Licensee Employees - All Facilities (CY2013)



█ For Cause Positive Rate  
 - - - Random Positive Rate

Only facilities that conducted at least one random test are included.

# Random and For-Cause Testing Positive Rate Comparison - Contractor/Vendors - All Facilities (CY 2013)



Preliminary Draft Data - NRC provided - May 2014

For Cause Positive Rate Random Positive Rate

Only facilities that conducted at least one random test are included.

Babcc  
Ce