

Draft – Pre-Decisional Information

Callaway request - FFD Performance Data

Industry Summaries and trending for CY 2013

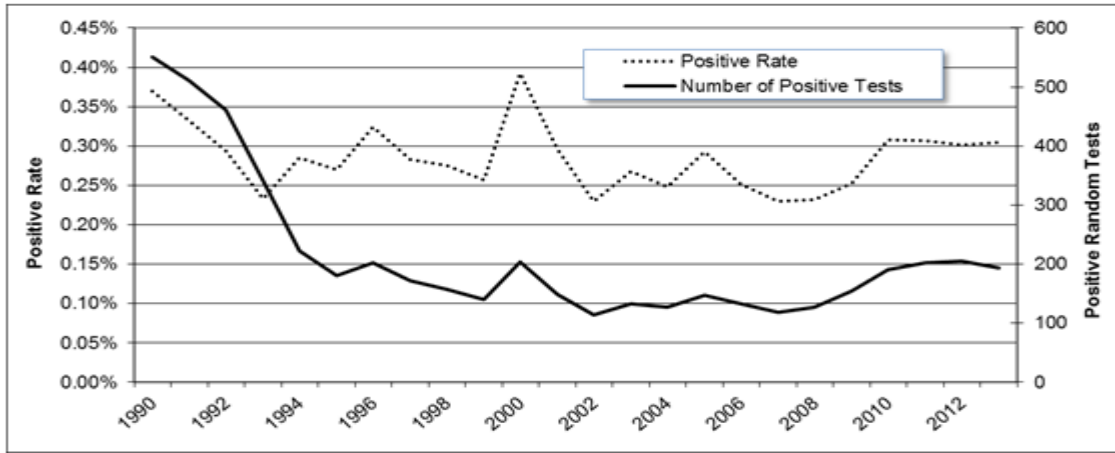
Year	Employment Type	Pre-Access				Random				For Cause			
		Industry			Site	Industry			Site	Industry			Site
		Min	Ave	Max		Min	Ave	Max		Min	Ave	Max	
2013	Licensee Employees	0	0.35	3.85		0	0.14	0.80		0	11.23	100.0	
2012		0	0.27	4.00		0	0.16	0.75		0	7.80	100.0	
2011		0	0.26	1.76		0	0.16	0.77		0	6.29	100.0	

2013	Contractor/ Vendor	0	0.78	2.43		0	0.57	2.01		0	14.32	100.0	
2012		0	0.81	3.57		0	0.50	1.67		0	13.64	100.0	
2011		0	0.77	2.52		0	0.54	2.11		0	10.08		

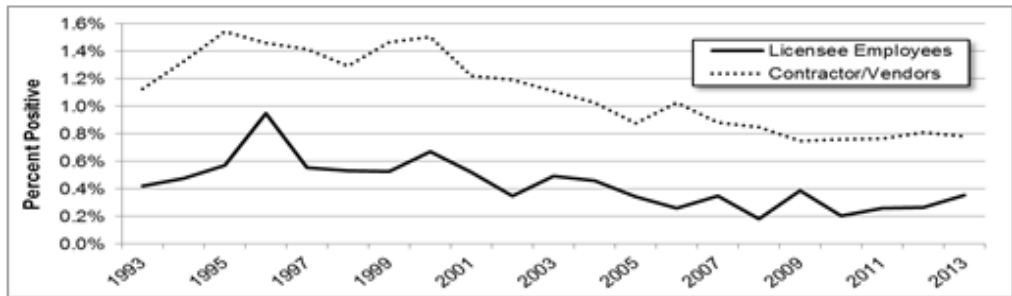
Test Category*	Number Tested	Number Tested Positive	Percent Positive
Pre-Access	89,187	654	0.73%
Random	63,678	194	0.30%
For Cause	627	84	13.40%
Post-Event	718	5	0.70%
Followup	7,487	70	0.93%
Total	161,697	1,007	0.62%

Test Category	Licensee Employees			C/Vs		
	Number Tested	Number Positive	Percent Positive	Number Tested	Number Positive	Percent Positive
Pre-Access	10,143	36	0.35%	79,044	618	0.78%
Random	39,140	53	0.14%	24,538	141	0.57%
For Cause	187	21	11.23%	440	63	14.32%
Post-Event	226	0	0.00%	492	5	1.02%
Followup	3,781	25	0.66%	3,706	45	1.21%
Total	53,477	135	0.25%	108,220	872	0.81%

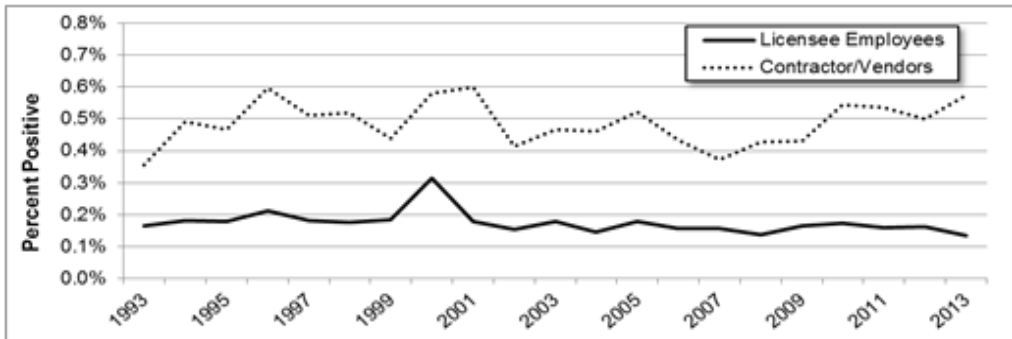
Random Testing



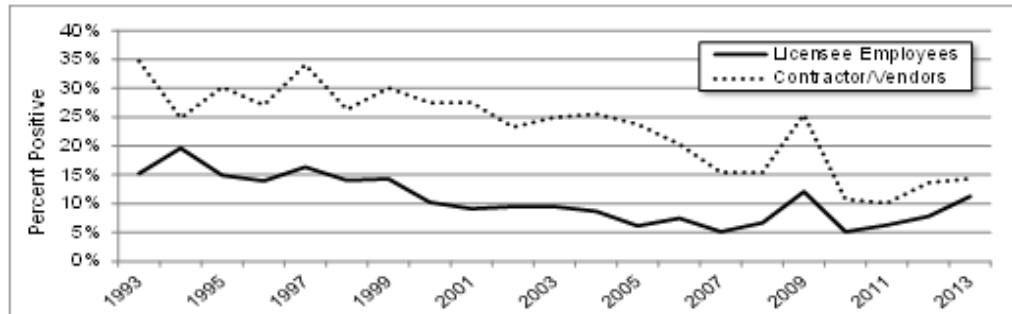
Pre-access Testing



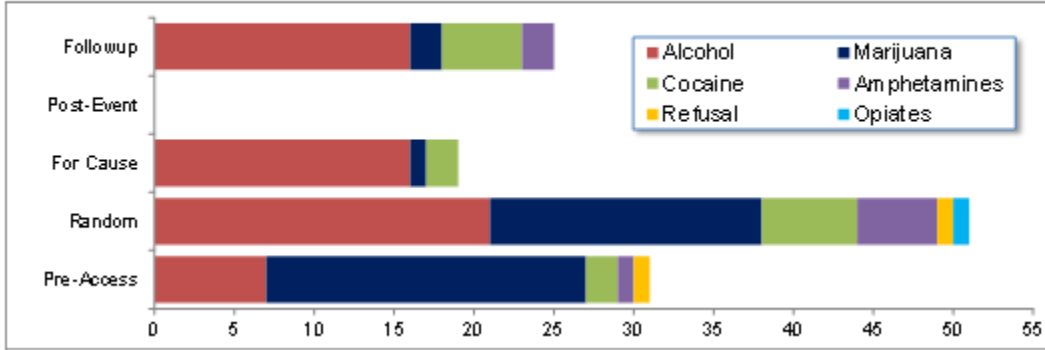
Random Testing



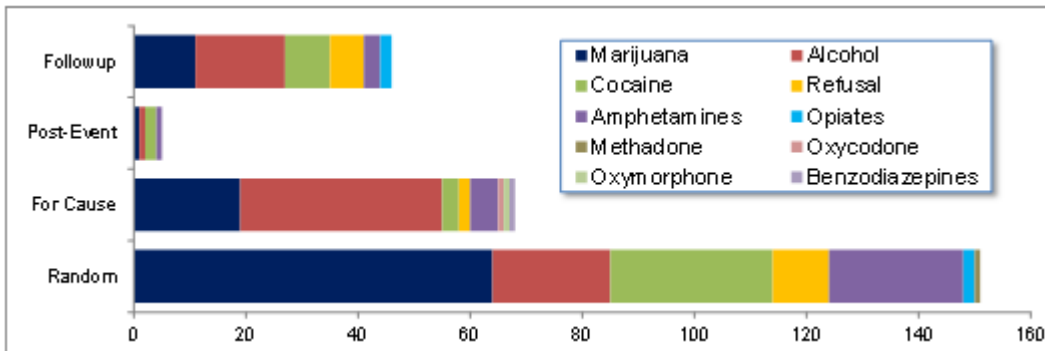
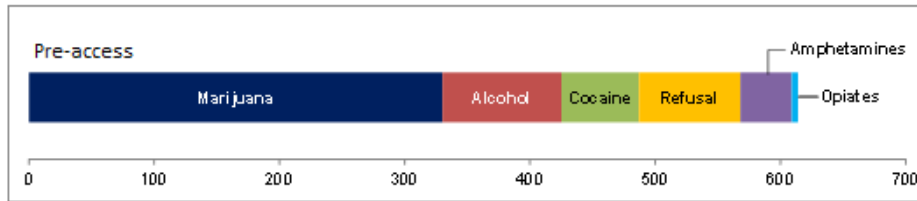
For-cause Testing



Licensee Employees



Contractor/Vendors



Alcohol Positives (CY 2013)

