

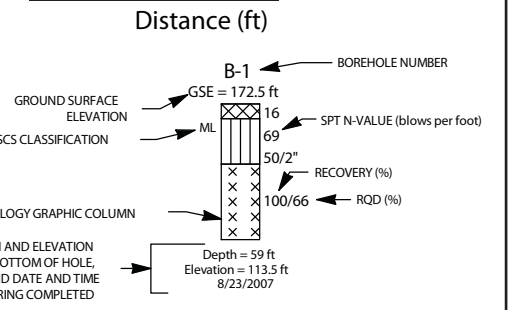
LEGEND

- S-1 Soil Layer 1
- NAV-1 North Reactor Avon Park Rock Layer 1
- ⊗ Top of Rock

LITHOLOGY GRAPHICS

- | | | | |
|--|--|--|--|
| | | | |
| | | | |
| | | | |
| | | | |
| | | | |

BOREHOLE LEGEND



LINE IS ONE INCH WHEN PRINTED TO SCALE

0 1"

VERTICAL SCALE: 1" = 80.0'

HORIZONTAL SCALE: 1' = 70.0'

Duke Energy Florida
 Levy Nuclear Plant
 Units 1 and 2
 Part 2, Final Safety Analysis Report

Subsurface Cross Section at
 LNP 2: Plant North to South
 FIGURE 2.5.4.2-203A

NOTE: Borehole stick logs were shifted from their actual horizontal location for clarity. Actual horizontal locations of boreholes are shown below.

LEGEND: