



U.S. Fish and Wildlife Service

Natural Resources of Concern


This resource list is to be used for planning purposes only — it is not an official species list.

Endangered Species Act species list information for your project is available online and listed below for the following FWS Field Offices:

South Dakota Ecological Services Field Office
 420 SOUTH GARFIELD AVENUE, SUITE 400
 PIERRE, SD 57501
 (605) 224-8693
<http://www.fws.gov/southdakotafieldoffice/>

Project Name:

Dewey Chilson Wellfield

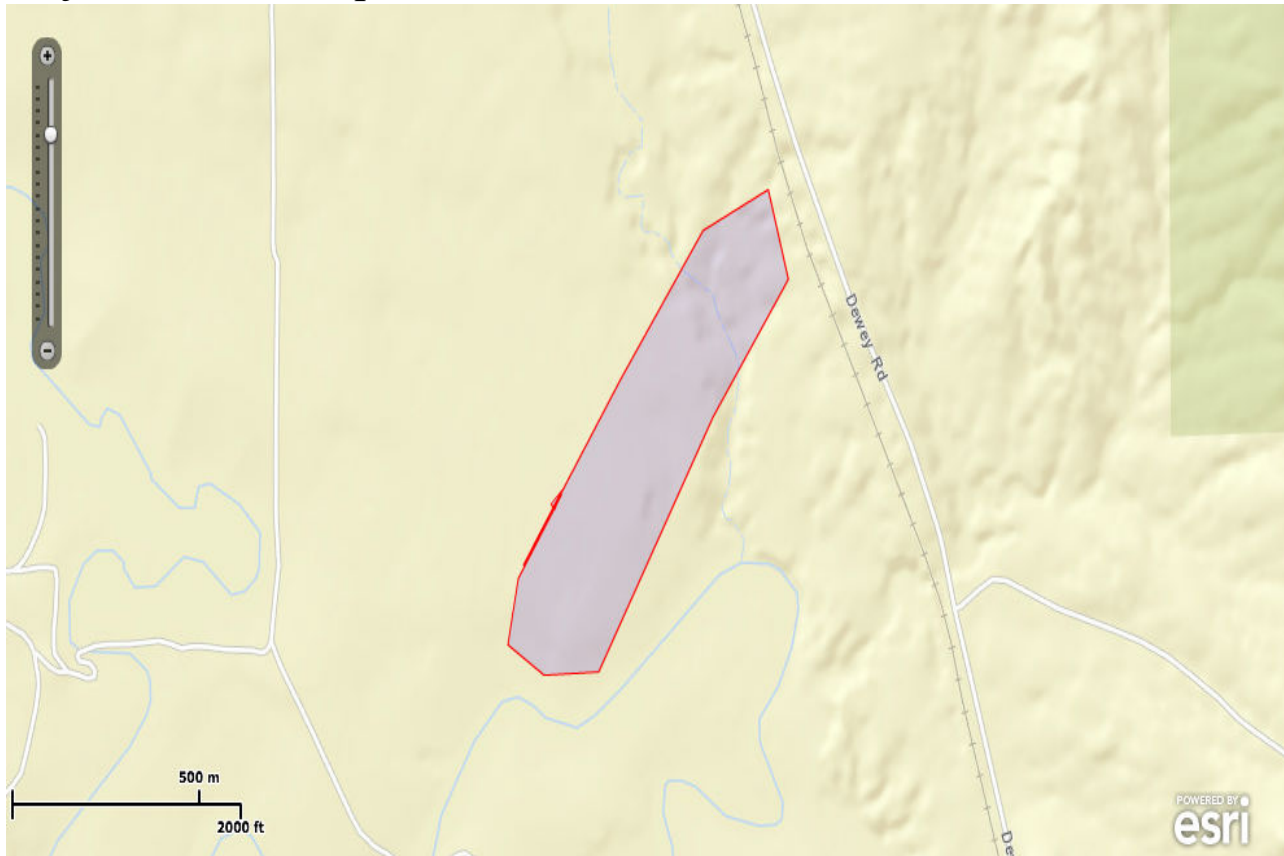
| United States Nuclear Regulatory Commission Official Hearing Exhibit | |
|--|---|
| In the Matter of: POWERTECH USA, INC. (Dewey-Burdock In Situ Uranium Recovery Facility) | |
|  | ASLBP #: 10-898-02-MLA-BD01 |
| | Docket #: 04009075 |
| | Exhibit #: INT-010q-00-BD01 |
| | Admitted: Identified: 8/19/2014 |
| | Rejected: Withdrawn: Stricken: |
| Other: | |



U.S. Fish and Wildlife Service

Natural Resources of Concern

Project Location Map:



Project Counties:

Custer, SD



U.S. Fish and Wildlife Service

Natural Resources of Concern

Geographic coordinates (Open Geospatial Consortium Well-Known Text, NAD83):

MULTIPOLYGON (((-104.02601973 43.48763934, -104.027008 43.4865695, -104.02602894 43.48764809, -104.02601973 43.48763934)), ((-104.02593528 43.48769542, -104.0260018 43.48762233, -104.02601973 43.48763934, -104.02587857 43.48779215, -104.02593528 43.48769542)), ((-104.02587857 43.48779215, -104.0258579 43.4878274, -104.02583049 43.4878442, -104.02587857 43.48779215)), ((-104.02602894 43.48764809, -104.0260968 43.4877125, -104.0257291 43.4879784, -104.02602894 43.48764809)), ((-104.0260018 43.48762233, -104.0259866 43.4876079, -104.02593528 43.48769542, -104.0257613 43.4878866, -104.02583049 43.4878442, -104.0238094 43.4900321, -104.0210714 43.4928202, -104.018917 43.4935845, -104.0182519 43.4919095, -104.0207367 43.4893409, -104.0245221 43.4845809, -104.0263221 43.4845147, -104.0275261 43.4850854, -104.0271828 43.4863246, -104.0260018 43.48762233))))))

Project Type:

Mining

Endangered Species Act Species List (USFWS Endangered Species Program).

There are a total of 5 threatened, endangered, or candidate species on your species list. Species on this list should be considered in an effects analysis for your project and could include species that exist in another geographic area. For example, certain fishes may appear on the species list because a project could cause downstream effects on the species. Critical habitats listed under the **Has Critical Habitat** column may or may not lie within your project area. See the **Critical habitats within your project area** section below for critical habitat that lies within your project area. Please contact the designated FWS office if you have questions.

Species that should be considered in an effects analysis for your project:

| Birds | Status | | Has Critical Habitat | Contact |
|--|------------------------|------------------------------|----------------------|--|
| Red Knot (<i>Calidris canutus rufa</i>) | Proposed Threatened | species info | | South Dakota Ecological Services Field Office |
| Sprague's Pipit (<i>Anthus spragueii</i>) | Candidate | species info | | South Dakota Ecological Services Field Office |



U.S. Fish and Wildlife Service

Natural Resources of Concern

| | | | | |
|---|------------------------|------------------------------|---|--|
| Whooping crane (<i>Grus americana</i>) Population: except where EXPN | Endangered | species info | Final designated critical habitat | South Dakota Ecological Services Field Office |
| Mammals | | | | |
| Black-Footed ferret (<i>Mustela nigripes</i>) Population: entire population, except where EXPN | Endangered | species info | | South Dakota Ecological Services Field Office |
| northern long-eared Bat (<i>Myotis septentrionalis</i>) Population: | Proposed Endangered | species info | | South Dakota Ecological Services Field Office |

Critical habitats within your project area:

There are no critical habitats within your project area.

FWS National Wildlife Refuges ([USFWS National Wildlife Refuges Program](#)).

There are no refuges found within the vicinity of your project.

FWS Migratory Birds ([USFWS Migratory Bird Program](#)).

Most species of birds, including eagles and other raptors, are protected under the Migratory Bird Treaty Act (16 U.S.C. 703). Bald eagles and golden eagles receive additional protection under the [Bald and Golden Eagle Protection Act](#) (16 U.S.C. 668). The Service's [Birds of Conservation Concern \(2008\)](#) report identifies species, subspecies, and populations of all migratory nongame birds that, without additional conservation actions, are likely to become listed under the Endangered Species Act as amended (16 U.S.C 1531 et seq.).

Migratory bird information is not available for your project location.



U.S. Fish and Wildlife Service

Natural Resources of Concern

NWI Wetlands ([USFWS National Wetlands Inventory](#)).

The U.S. Fish and Wildlife Service is the principal Federal agency that provides information on the extent and status of wetlands in the U.S., via the National Wetlands Inventory Program (NWI). In addition to impacts to wetlands within your immediate project area, wetlands outside of your project area may need to be considered in any evaluation of project impacts, due to the hydrologic nature of wetlands (for example, project activities may affect local hydrology within, and outside of, your immediate project area). It may be helpful to refer to the USFWS National Wetland Inventory website. The designated FWS office can also assist you. Impacts to wetlands and other aquatic habitats from your project may be subject to regulation under Section 404 of the Clean Water Act, or other State/Federal Statutes. Project Proponents should discuss the relationship of these requirements to their project with the Regulatory Program of the appropriate [U.S. Army Corps of Engineers District](#).

IPaC is unable to display wetland information at this time.