

United States Nuclear Regulatory Commission Official Hearing Exhibit

In the Matter of: POWERTECH USA, INC.
(Dewey-Burdock In Situ Uranium Recovery Facility)



ASLBP #: 10-898-02-MLA-BD01

Docket #: 04009075

Exhibit #: APP-021-F-00-BD01

Admitted: 8/19/2014

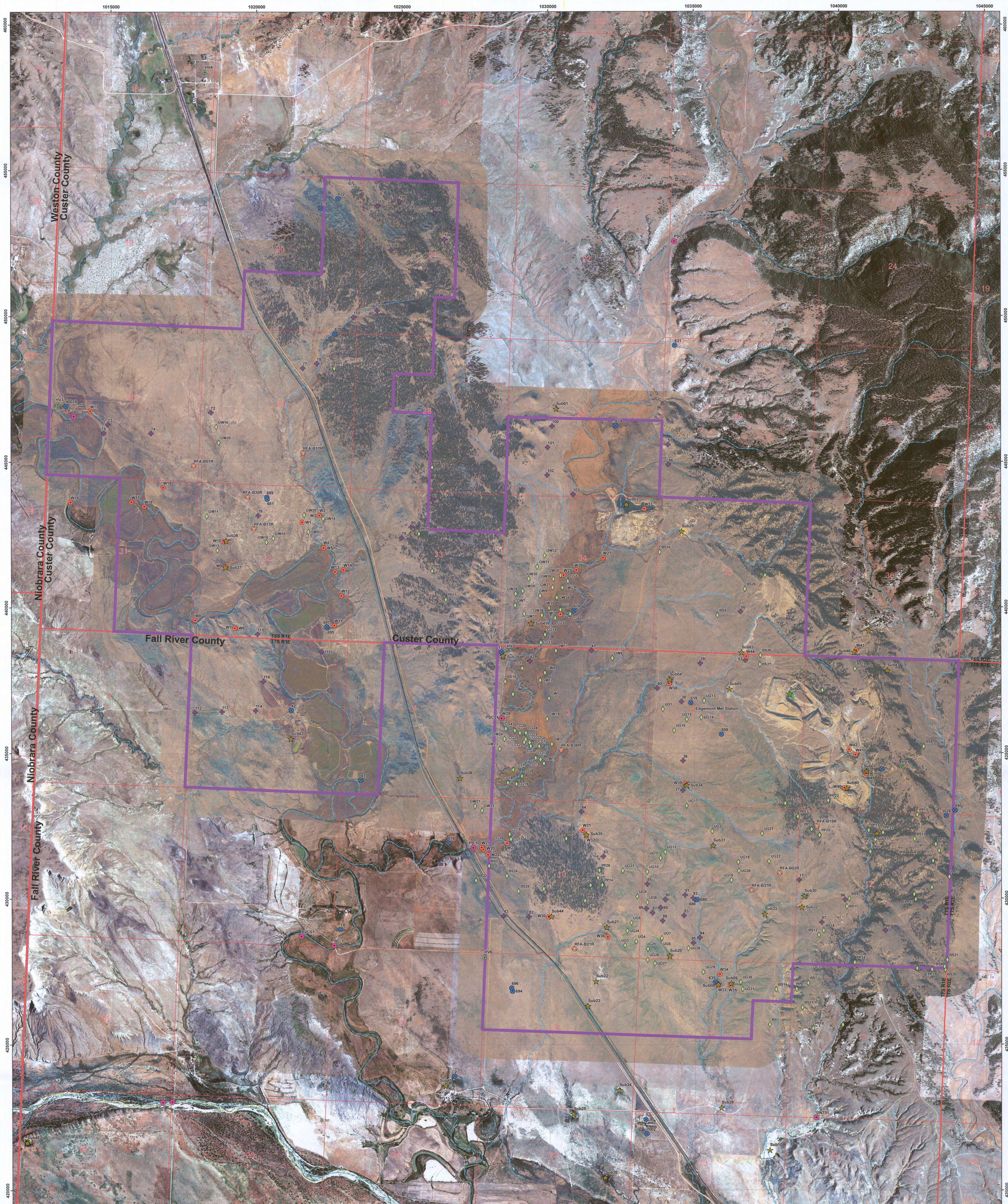
Rejected:

Other:

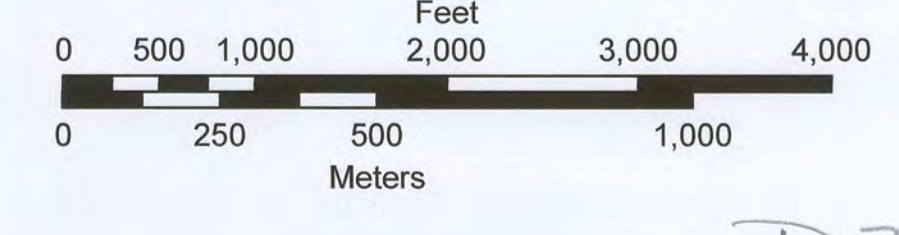
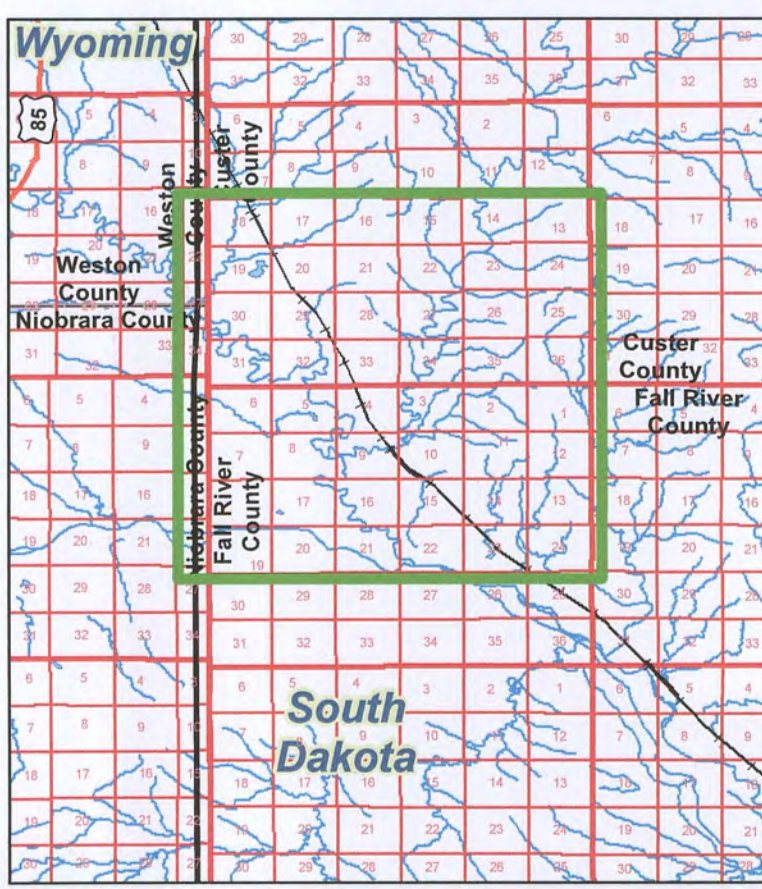
Identified: 8/19/2014

Withdrawn:

Stricken:



- Legend**
- Rivers and Streams
 - Railroad
 - Major Roads
- Sampling Location Type**
- Particulates, Radon 222, Soil, TLD (Env Radiation)
 - Meteorological Station
 - Stream
 - Surface Subimpoundment
 - Ground Water
 - Soil
 - Vegetation
 - Wetlands
 - Radon Flux



CONSULTANT		REVISIONS		PROJECT	
#	DRAWN	CHECKED	APPROVED	DATE	
CHECK SCALES		DATE		PROJECT	
1:10000		15-Jan-2009		Dewey-Burdock	
DRAWN		S. HEDRICK		R. BURDACK	
CHECKED		S. HEDRICK		R. BURDACK	
APPROVED		S. HEDRICK		R. BURDACK	
DATE		15-Jan-2009		13-Jan-2009	
SCALE		1"=1000'		NAD 1927 State Plane South Dakota South	
PROJECT		Dewey-Burdock		Map/Sampling Locations.mxd	
DRAWN		S. HEDRICK		R. BURDACK	
CHECKED		S. HEDRICK		R. BURDACK	
APPROVED		S. HEDRICK		R. BURDACK	
DATE		15-Jan-2009		13-Jan-2009	
SCALE		1"=1000'		NAD 1927 State Plane South Dakota South	
PROJECT		Dewey-Burdock		Map/Sampling Locations.mxd	

D37

POWERTECH (USA) INC.
PLATE 2.5-1
Sampling Locations