

United States Nuclear Regulatory Commission Official Hearing Exhibit

In the Matter of: POWERTECH USA, INC.
(Dewey-Burdock In Situ Uranium Recovery Facility)



ASLBP #: 10-898-02-MLA-BD01

Docket #: 04009075

Exhibit #: APP-021-K-00-BD01

Admitted: 8/19/2014

Rejected:

Other:

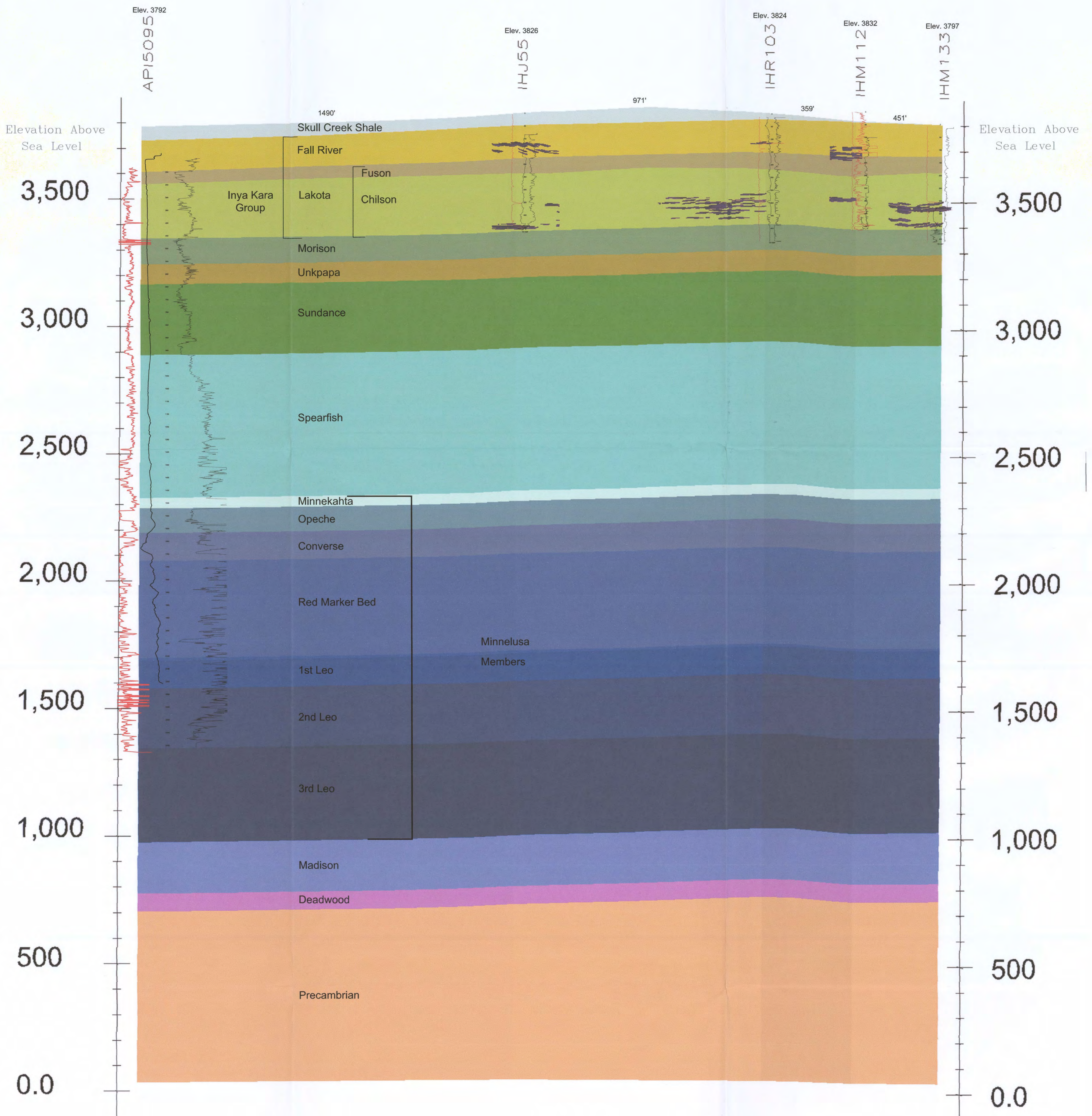
Identified: 8/19/2014

Withdrawn:

Stricken:

E
Northwest

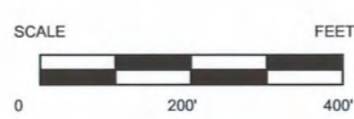
E'
Southeast



Z=1X

D42

Uranium Ore 0.02%
Grade Cutoff



CONSULTANT	REVISIONS				<p>PowerTech (USA) Inc. Plate 2.6-5 Generalized Cross Section Fall River County</p>
	#	DRAWN	CHECKED	APPROVED	
REF					
CHECK SCALES	If this bar does not measure 1 inch this map is not at its original scale.				PLOT DATE 11-Nov-2008 DATE DRAWN RC CHECKED SCALE As Noted FILENAME c:\powertech\south dakota\dewey burdock\autocad\2008\sections 10-15-2008\le-e'xsec e-e' ore1141-08.dwg
PROJECT	Dewey-Burdock Project				COORDS