

**United States Nuclear Regulatory Commission Official Hearing Exhibit**

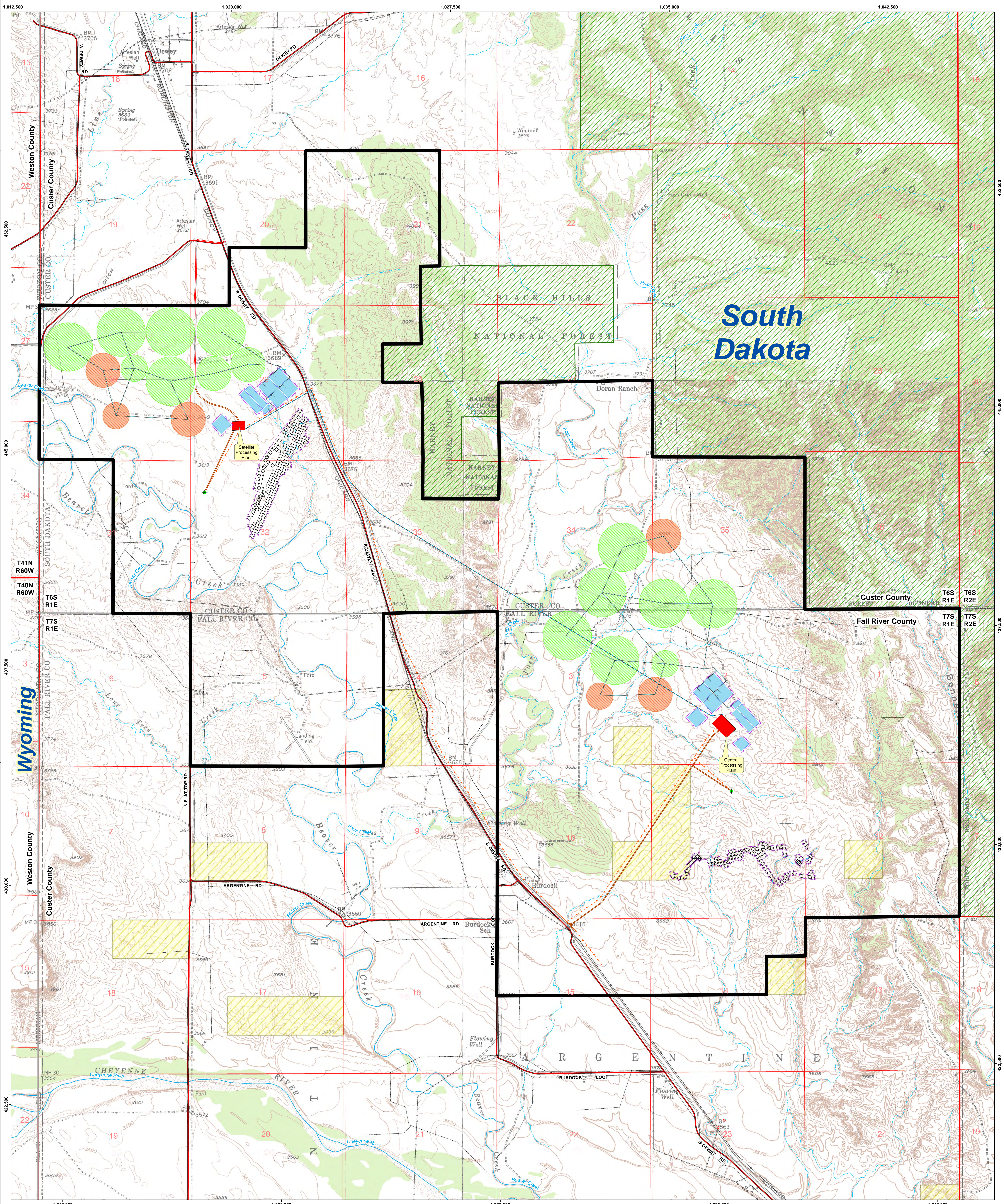
**In the Matter of:** POWERTECH USA, INC.  
(Dewey-Burdock In Situ Uranium Recovery Facility)



**ASLBP #:** 10-898-02-MLA-BD01  
**Docket #:** 04009075  
**Exhibit #:** APP-016-H-00-BD01  
**Admitted:** 8/19/2014  
**Rejected:**  
**Other:**

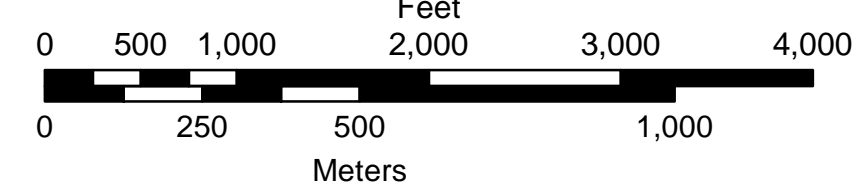
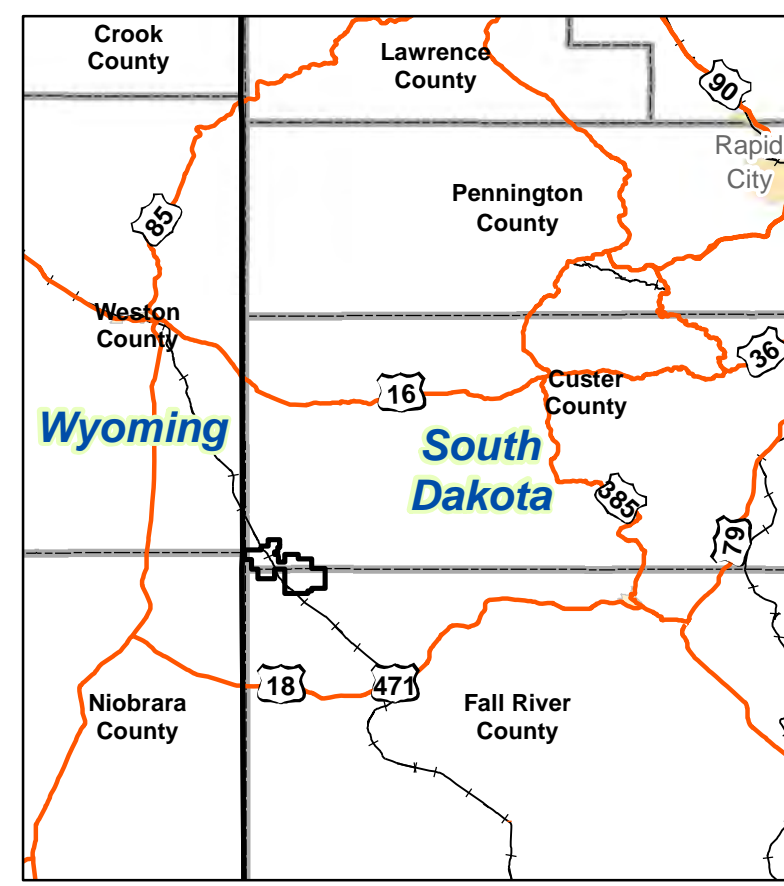
**Identified:** 8/19/2014  
**Withdrawn:**  
**Stricken:**





**Legend**

- Project Boundary
- Processing Plants
- BLM Land
- Ponds
- Black Hills National Forest
- Potential Perimeter Fence
- Ephemeral Streams
- Perennial Streams
- Existing BHEC Powerlines
- Overhead Electric Lines
- Existing Golden West Telephone Lines
- Land Application
- Standby Land Application
- Madison Well
- Potential Well Field Grid
- Existing Roads Used for Access
- Access Roads
- BNSF Railroad
- County Roads
- Pipelines



#	REVISIONS		
	DRAWN	CHECKED	APPROVED

DATE	22-Jun-2011	DATE	17-Aug-2010
DRAWN	S. Haines	DATE	17-Aug-2010
CHECKED	J. Bonner, J. Mays	DATE	17-Aug-2010
APPROVED	J. Bonner, J. Mays	DATE	17-Aug-2010

**POWERTECH (USA) INC.**

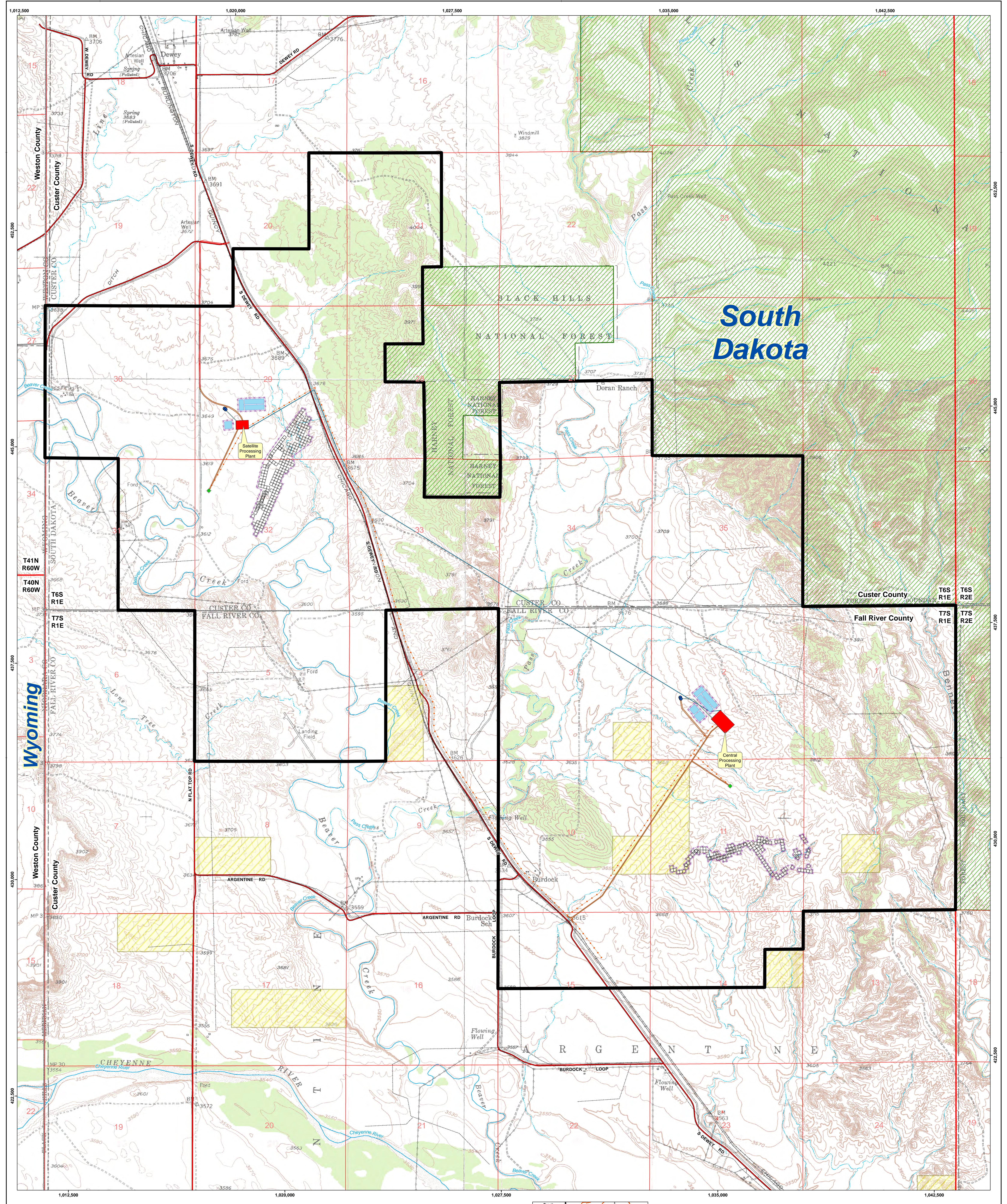
**Exhibit 3.1-2**

**Proposed Facilities and Potential Initial Well Field Areas Land Application Well Option**

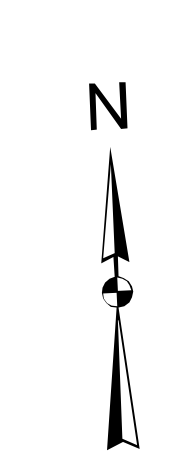
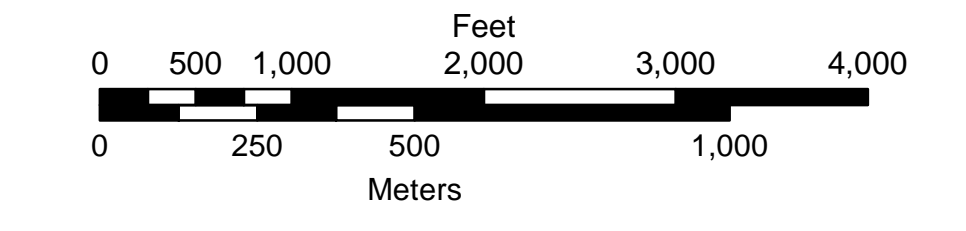
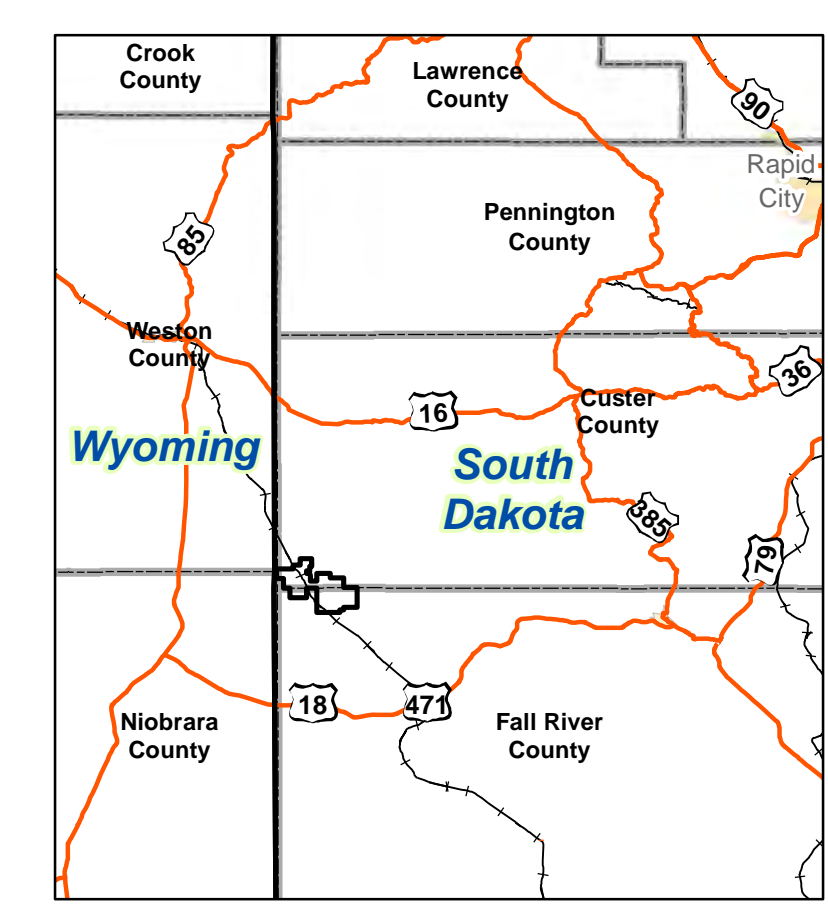
Dewey-Burdock Project

Project No. 27, South Dakota State Plane South (feet)





- Legend**
- Project Boundary
  - BLM Land
  - Black Hills National Forest
  - Ephemeral Streams
  - Perennial Streams
  - Existing BHEC Powerlines
  - Overhead Electric Lines
  - Existing Golden West Telephone Lines
  - Processing Plants
  - Ponds
  - Potential Perimeter Fence
  - Existing Roads Used for Access
  - Access Roads
  - BNSF Railroad
  - County Roads
  - Pipelines
  - Deep Disposal Well
  - Madison Well
  - Potential Well Field Grid



#	REVISIONS		
	DRAWN	CHECKED	APPROVED
1			
2			
3			
4			
5			

**POWERTECH (USA) INC.**

**Exhibit 3.1-3**

**Proposed Facilities and Potential Initial Well Field Areas**

**Deep Disposal Well Option**

Dewey-Burdock Project

Project: NAD 27 South Dakota State Plane South (feet)

Date: 22-Jun-2011

Author: S. Haines

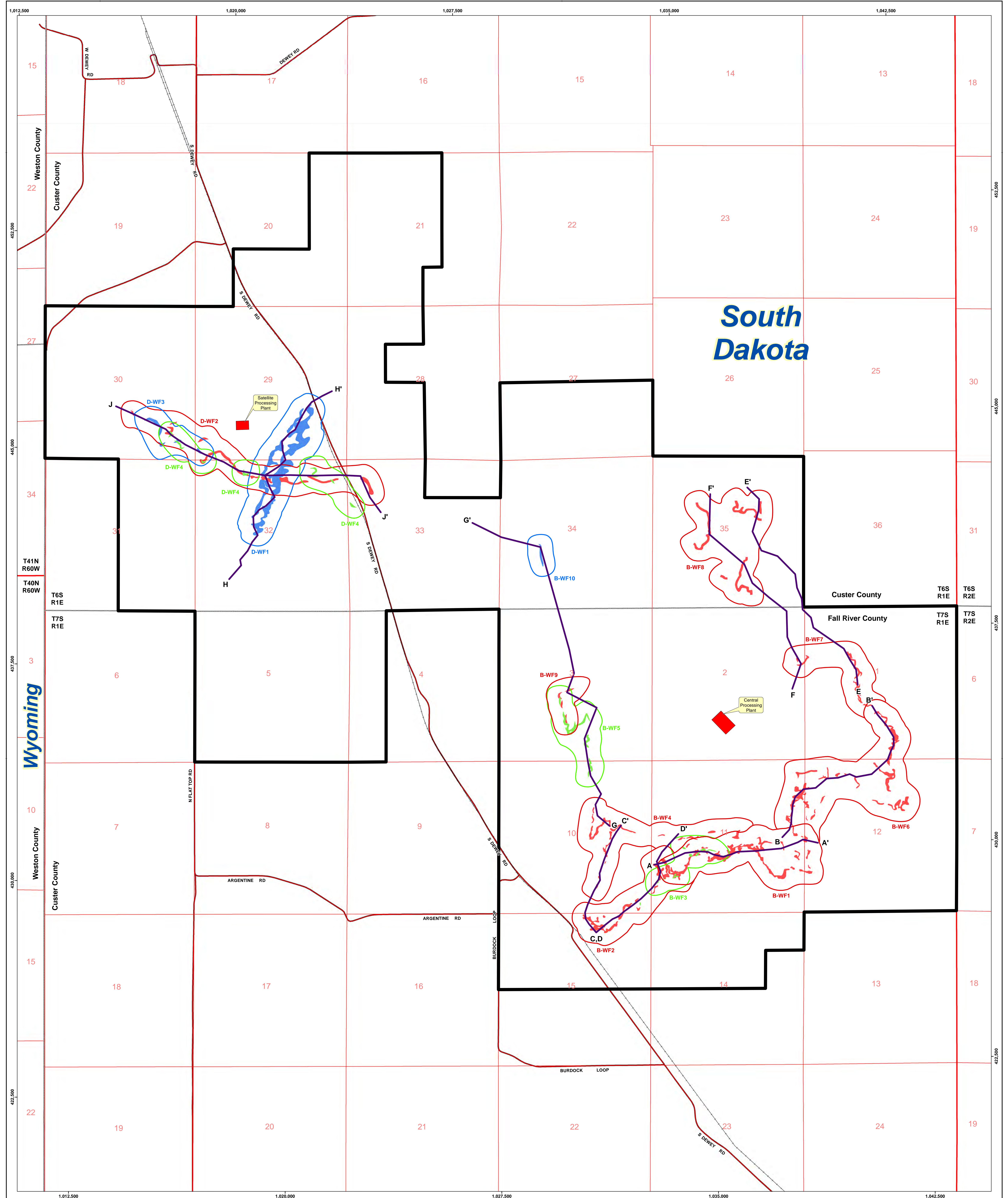
Checked: J. Bonner, J. Mays

Date: 17-Aug-2010

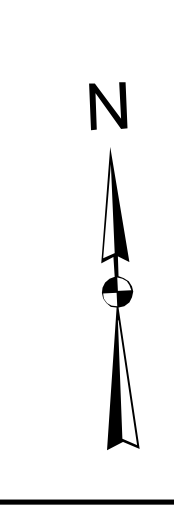
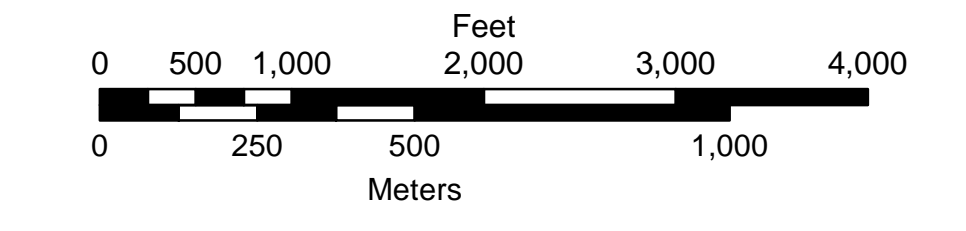
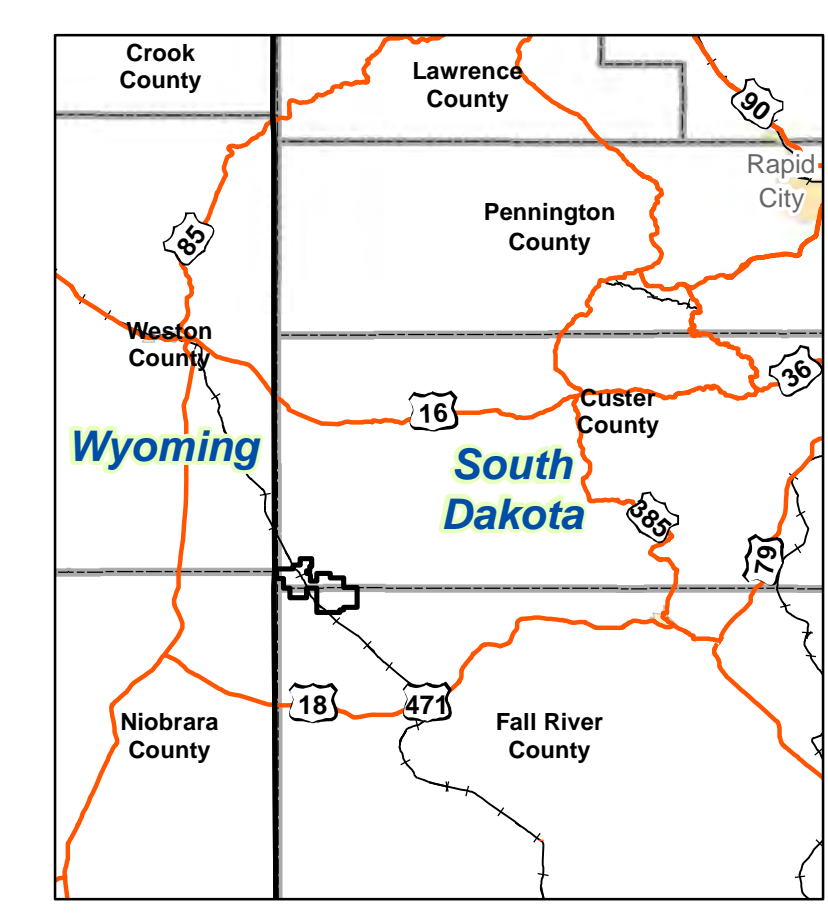
Entered: S. Haines

Project: P:\Dewey-Burdock\Submittals\WVC NRC TR RA1 June 2011\Exhibit 3.1-3.mxd





- Legend**
- Project Boundary
  - Cross Section Index Lines
  - Processing Plants
  - BNSF Railroad
  - County Roads
- Potential Well Field Areas**
- Lower Fall River
  - Upper Chilson
  - Middle/Lower Chilson
- Ore Bodies**
- Lower Fall River
  - Upper Chilson
  - Middle/Lower Chilson



REVISIONS			
#	DRAWN	CHECKED	APPROVED DATE

CHECK SCALES	
DATE	22-Jun-2011
BY	S. Henrick
PROJECT	Exhibit 3.1-4.pdf
REVISION	16-May-2011
BY	J. Bonner, J. Mays
PROJECT	P:\Dewey-Burdock\Submittals\WRC TR RAI June 2011\Exhibit 3.1-4.mxd

**POWERTECH (USA) INC.**

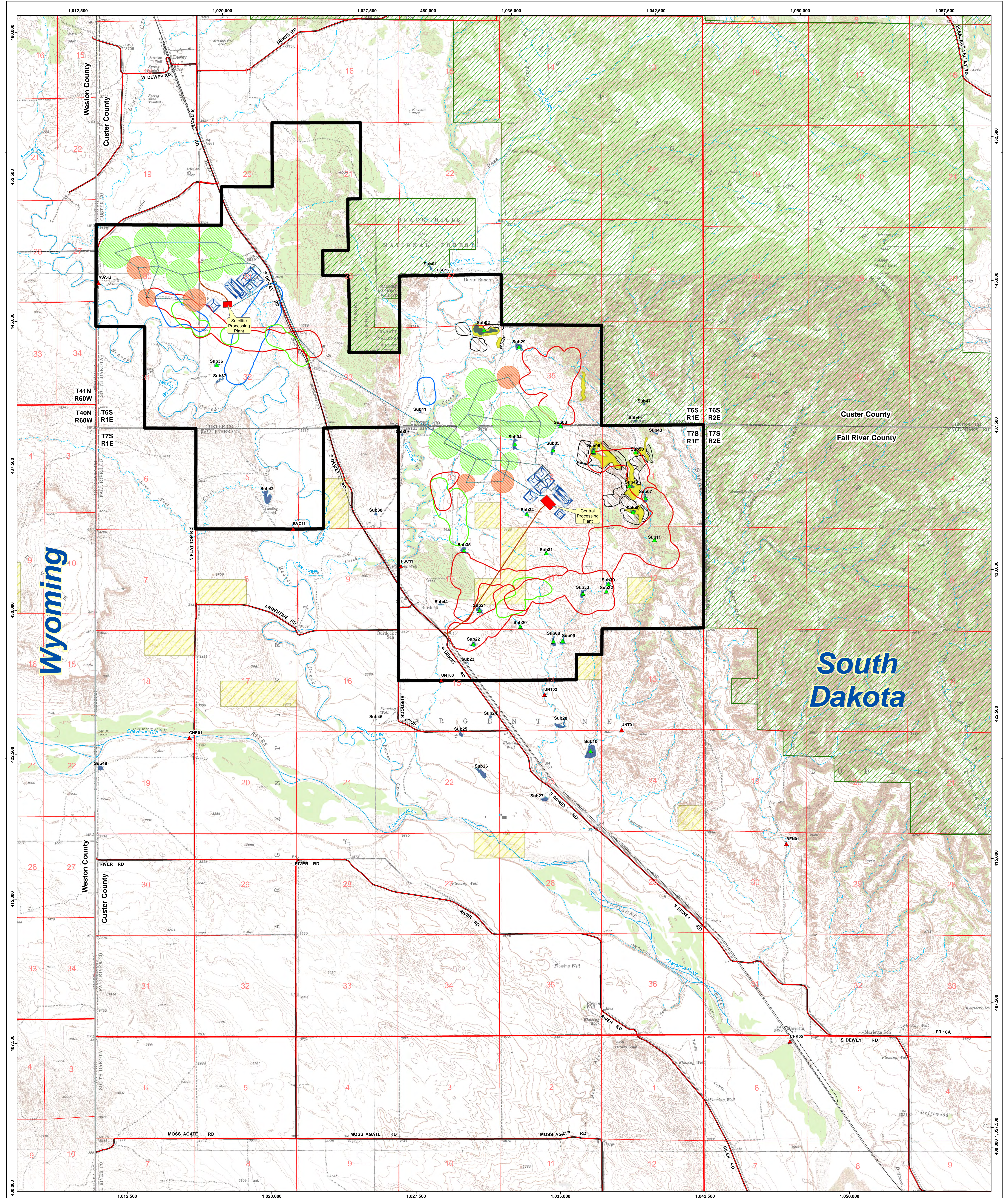
**Exhibit 3.1-4**

**Potential Well Field Areas**

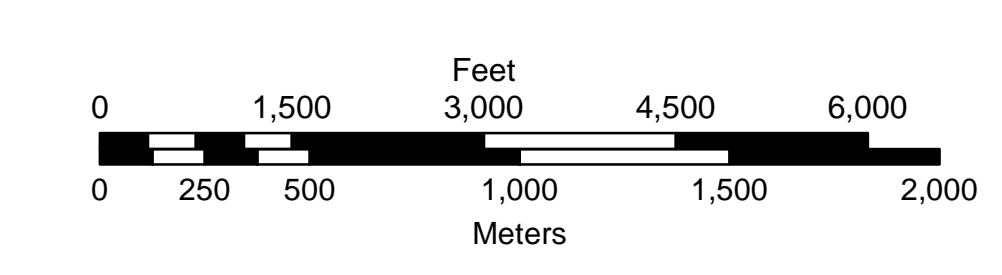
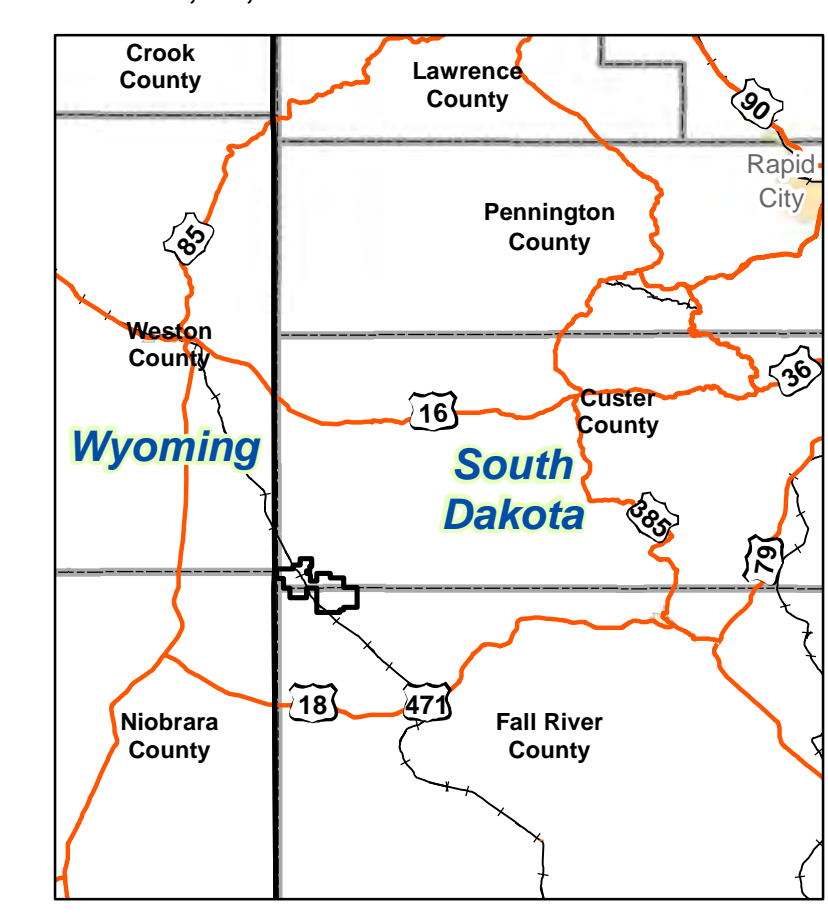
Dewey-Burdock Project

NAD 27, South Dakota State Plane South (feet)





- Legend**
- Operational Impoundment Sample Sites
  - Processing Plants
  - Land Application
  - Potential Well Field Areas
  - Operational Stream Sampling Sites
  - Existing Roads Used for Access
  - Standby Land Application
  - Lower Fall River
  - Impoundments
  - Access Roads
  - Ponds
  - Upper Chiscon
  - Project Boundary
  - BNSF Railroad
  - Middle/Lower Chiscon
  - BLM Land
  - County Roads
  - Pipelines
  - Black Hills National Forest
  - Open Pit Uranium Mines
  - Ephemeral Streams
  - Spoil Piles
  - Perennial Streams



CONSULTANT		REVISIONS		 <b>Exhibit 5.7-1</b> <b>Operational Surface Water Monitoring Locations</b> Dewey-Burdock Project
#	DRAWN	CHECKED	APPROVED	
749				
CHECK SCALES		DATE		
PROJECT	23-Jun-2011	DATE	07-Jun-2011	
DRAWN	S. Hancock	DATE	07-Jun-2011	
CHECKED	J. Mays	DATE	07-Jun-2011	
PROJECT	P:\Dewey-Burdock\Submittals\WRC TR RA1 June 2011\Exhibit 5.7-1.mxd			