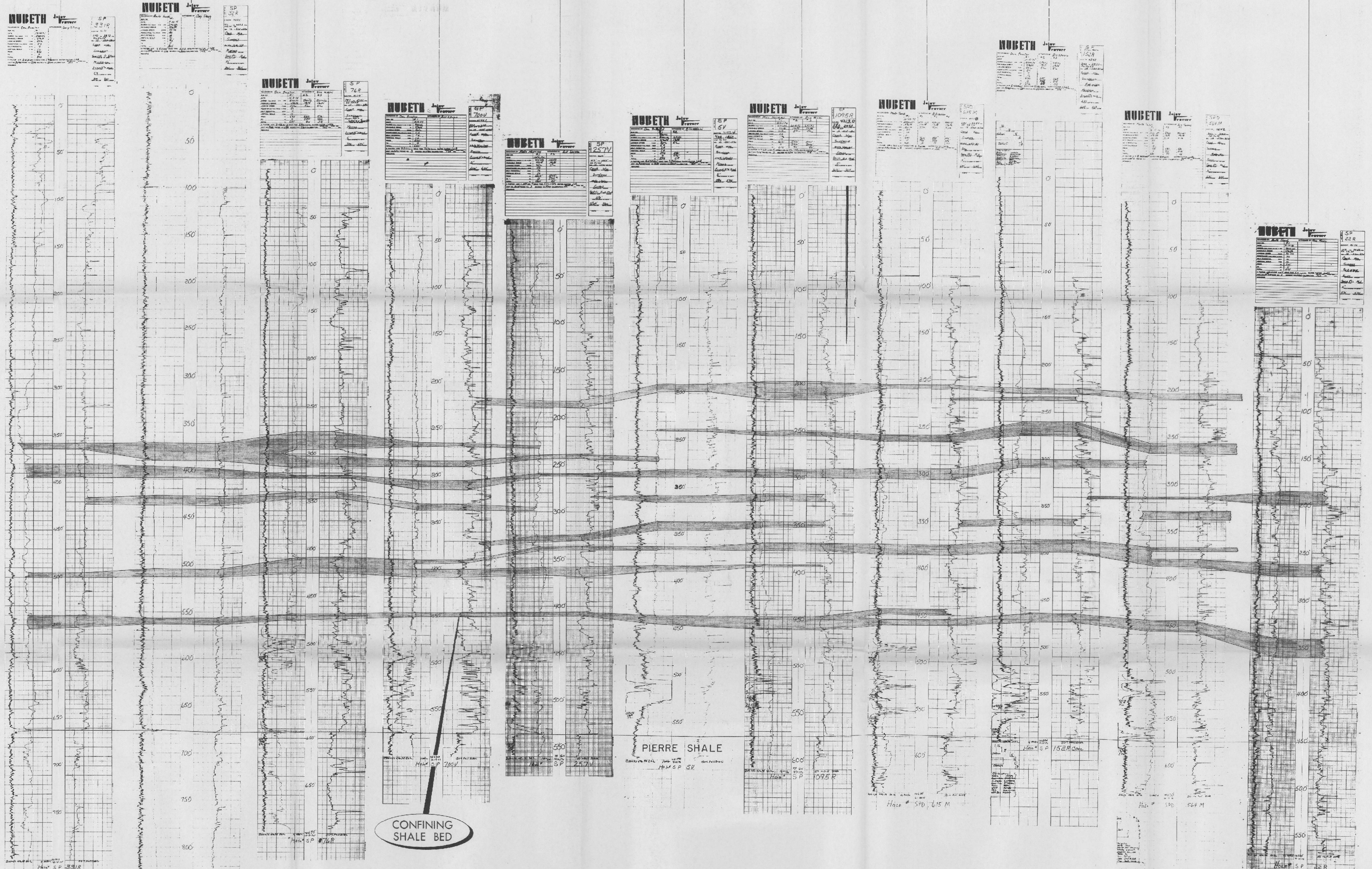


WEST B 1400' 1100' 800' 660' 450' 325' 430' 400' 500' 1150' B' EAST



**EXHIBIT 3**  
**ROSS ISR URANIUM PROJECT**  
**CROSS SECTION B-B'**

PLATE 4  
 NRC SOURCE MATERIAL APPLICATION  
 NUCLEAR DYNAMICS-NUBETH  
 EAST-WEST GEOLOGIC CROSS SECTION  
 T 53 N-R 67 W  
 CROOK COUNTY, WYOMING  
 MC 6-17-77