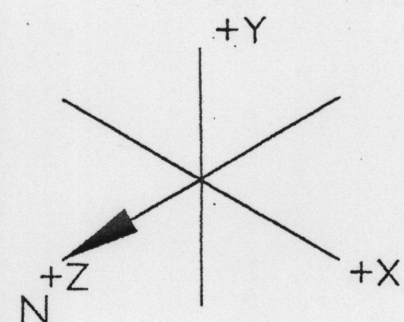
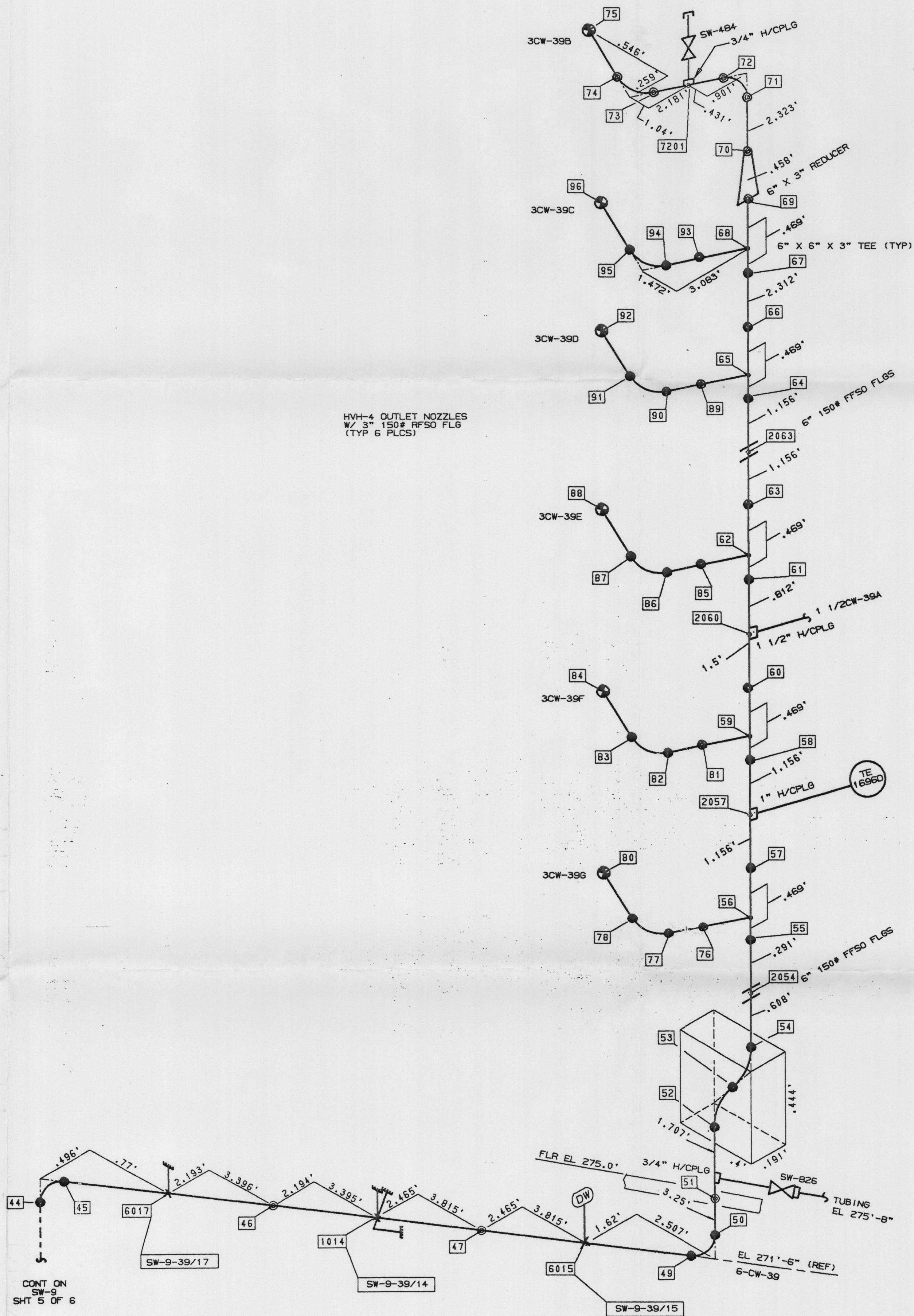


9 LHS 6-MS \*ON \*9MD



NOTE: ALL HORZ DIM ARE TYPICAL FOR ALL 3CW LINES.



HVH-4 OUTLET NOZZLES  
W/ 3" 150# RFSO FLG  
(TYP 6 PLCS)

CONT ON  
SW-9  
SHT 5 OF 6

TYPE OF ANALYSIS									
<input checked="" type="checkbox"/>	<input type="checkbox"/>	<input checked="" type="checkbox"/>	<input type="checkbox"/>						
SEISMIC <input type="checkbox"/> NON-SEISMIC <input checked="" type="checkbox"/> B31.1 <input type="checkbox"/> ASME									
PIPE PROPERTIES									
LINE NO.	LINE SPEC	O.D.	THK	MATERIAL	INSUL THK	OPER TEMP	DES PRESS	DES TEMP	
6CW-39	M027	6.625	.134	AL6XN	1"	105	150	250	
3CW LINES	M027	3.5	.120	AL6XN	1"	105	150	250	
VALVE PROPERTIES									
VALVE NO.	SIZE	VALVE WEIGHT	OPERATOR						
SW-484	3/4"		WT	C.G.					
SW-826	3/4"								
ANCHOR MOVEMENTS									
NODE NO.	MOVEMENTS	OPERATING CONDITIONS							
NA	$\Delta X$ $\Delta Y$ $\Delta Z$								
	SOURCE								
REFERENCE DOCUMENTS									
FLOW DIAG.	G-190199 SHTS 1,4							REV	39,40
PIPE DWG	G-190225 SHTS 3,4,5							REV	1,1,0
STRESS CALC	SW-9-7109B							REV	7
RESPONSE SPECTRA	REACTOR CONT BLDG EL 289.0' REACTOR INNER STRUT EL 232.5',248',272.5'								
NOTES & REFERENCES									
1. UNLESS OTHERWISE SPECIFIED, DIMENSIONS ARE GIVEN TO THE CENTERLINE OF TEES AND ELBOWS.									
2. AL6XN MATERIAL IS: 3" SCH 10S PIPE - ASTM B-675-B7 CL2 FITTINGS - ASTM B-366 CL WP-S OR WP-W 6" SCH 10S PIPE - ASTM B-688, FABR ASTM A358 CL2 FITTINGS - ASTM B-366 CL WP-S OR WP-W									
3. ALL PIPING ON THIS SHEET WAS REPLACED BY PLANT MOD 858 REV. 1.									
NOTE: THIS DRAWING SUPERSEDES ISO SW-9 SHT'S 5-8 REV. 1, AND ISO SW-9P SHT'S 5-8 REV. 0.									
SUPPORT LEGEND									
	RIGID		SNUBBER		ANCHOR				
	SPRING		AXIAL		DW SUPPORT				
THIS DRAWING IS A PRODUCT OF THE NED CAD/E SYSTEM. ANY PERSONNEL REVISING THIS DOCUMENT SHOULD ENSURE THAT SUCH CHANGES ARE INCORPORATED INTO THE ELECTRONIC DRAWING DATABASE BEFORE FINAL APPROVAL. CONTACT THE APPROPRIATE NED DISCIPLINE IF THERE ARE ANY QUESTIONS.									
NUCLEAR SAFETY RELATED (Q-LIST) YES <input type="checkbox"/> NO <input type="checkbox"/> PARTIAL <input type="checkbox"/> F.P.-Q <input type="checkbox"/> R.W.-Q <input type="checkbox"/>									
CAROLINA POWER & LIGHT COMPANY <b>CP&amp;L</b>									
NUCLEAR ENGINEERING DEPARTMENT - RALEIGH, N.C.									
PLANT: ROBINSON NUCLEAR PLANT UNIT 2 SCALE: NTS									
TITLE: REACTOR CONTAINMENT BLDG SERVICE WATER FROM HVH-4 STRESS ISOMETRIC DWG NO. SW-9									
SHT 6 OF 6 REV 3									

INFO ONLY  
APERTURE CARD

REV	DATE	DESCRIPTION	CHK	APP	RE	DPE	DPPE	LE
3	10/2/82	AS-BUILT RECONCILIATION PM 1082	M.L.R.	P.V.	AMW	VKS	VKS	
2	8-21-81	FIRST ISSUE PER MOD 1082	M.L.R.	P.V.	AMW	VKS	VKS	

FORM: BR-CAD-A-11.82

9903030271

SW-9-7109B REV 7 PA. 67