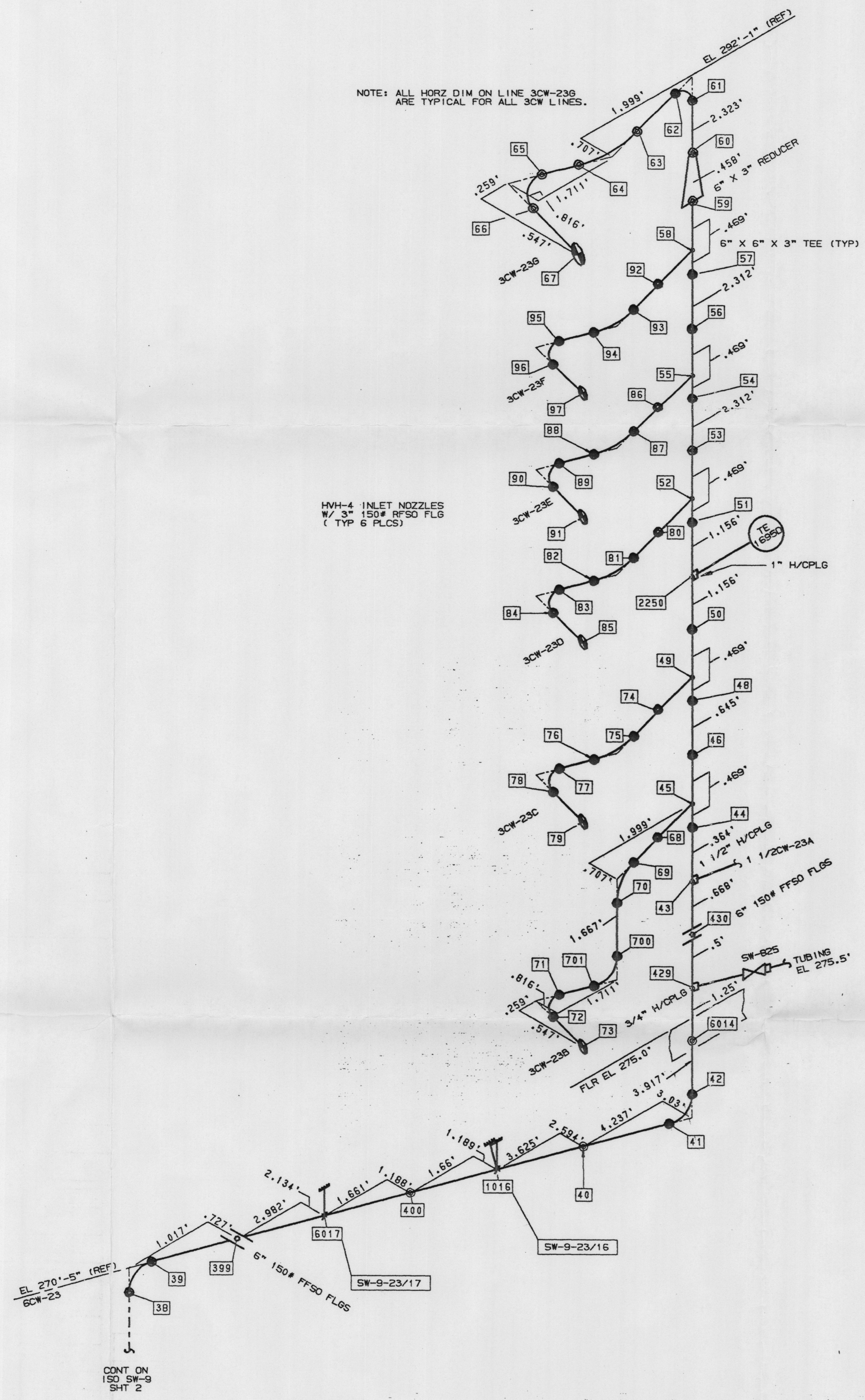


NOTE: ALL HORIZ DIM ON LINE 3CW-236 ARE TYPICAL FOR ALL 3CW LINES.



HVH-4 INLET NOZZLES W/ 3" 150# RFSO FLG (TYP 6 PLCS)

TYPE OF ANALYSIS

SEISMIC NON-SEISMIC B31.1 ASME

PIPE PROPERTIES

LINE NO.	LINE SPEC	O.D.	THK	MATERIAL	INSUL THK	OPER TEMP	DES PRESS	DES TEMP
3CW-23	M027	5.625	.134	AL6XN	1"	95	150	125
3CW LINES	M027	3.5	.120	AL6XN	1"	95	150	125

VALVE PROPERTIES

VALVE NO.	SIZE	VALVE WEIGHT	OPERATOR WT	OPERATOR C.G.
SW-825	3/4"			

ANCHOR MOVEMENTS

NODE NO.	MOVEMENTS	OPERATING CONDITIONS		
		Δ X	Δ Y	Δ Z
NA				
	SOURCE			

REFERENCE DOCUMENTS

FLOW DIAG.	G-190199 SHTS 1,4	REV	39,40
PIPE DWG	G-190225 SHTS 3,4,5	REV	1,1,0
STRESS CALC	SW-9-7109A	REV	B
RESPONSE SPECTRA	REACTOR CONT BLDG EL 289 REACTOR INNER STRUCT EL 232.5,248,272.5		

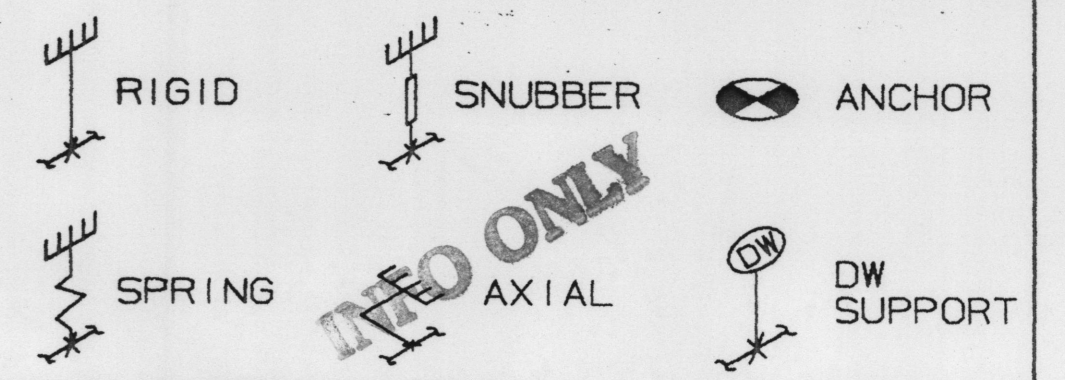
NOTES & REFERENCES

- UNLESS OTHERWISE SPECIFIED DIMENSIONS ARE GIVEN TO CENTERLINE OF TEES AND ELBOWS.
- AL6XN MATERIAL IS:
 3" SCH 10S PIPE ASTM B-675-87 CL 2
 FITTINGS ASTM B-366 CL WP-S OR WP-W
 6" SCH 10S PIPE ASTM B-698, FABR ASTM A358 CL2
 FITTINGS ASTM B-366 CL WP-S OR WP-W
- ALL PIPING ON THIS SHT WAS REPLACED BY PLANT MOD 858 REV. 1.

APERTURE CARD

NOTE: THIS DRAWING SUPERSEDES ISO SW-9 SHT'S 1-4 REV. 1 AND ISO SW-9P SHT'S 1-4 REV. 0.

SUPPORT LEGEND



THIS DRAWING IS A PRODUCT OF THE NED CAD/E SYSTEM. ANY PERSONNEL REVISING THIS DOCUMENT SHOULD ENSURE THAT SUCH CHANGES ARE INCORPORATED INTO THE ELECTRONIC DRAWING DATABASE BEFORE FINAL APPROVAL. CONTACT THE APPROPRIATE NED DISCIPLINE IF THERE ARE ANY QUESTIONS.

NUCLEAR SAFETY RELATED (Q-LIST)
 YES NO PARTIAL F.P.-Q R.W.-Q

CAROLINA POWER & LIGHT COMPANY		CP&L	
NUCLEAR ENGINEERING DEPARTMENT - RALEIGH, N.C.			
PLANT: ROBINSON NUCLEAR PLANT UNIT 2		SCALE: NTS	
TITLE: REACTOR CONTAINMENT BLDG SERVICE WATER TO HVH-4 STRESS ISOMETRIC		DWG NO. SW-9	
		SHT 3 OF 6 REV 3	

REV	DATE	DESCRIPTION	CHK	FE	DPE	DPPE	LE
3	10/1/93	AS-BUILT RECONCILIATION PM 1082	M.J. JRE	AMW	PMD	PKS	VKS
2	9-21-91	FIRST ISSUE PER MOD 1082	M.J. JRE	PV	AMW	VKS	VKS

FORM: SW-CAD-1-9130

SW-9-7109A REV. B Pg. 07

99030302603