

# OVERSIZE DOCUMENT PAGE(S) PULLED

-----  
**SEE APERTURE CARD FILES**

APERTURE CARD/PAPER COPY AVAILABLE THROUGH NRC FILE CENTER  
.....

NUMBER OF OVERSIZE PAGES FILMED ON APERTURE CARD(S) 8  
.....

ACCESSION NUMBERS OF OVERSIZE PAGES:

9903030260

262

263

266

269

271

274

276

ANO	SUP	FPAC	PAGES	AVAIL
_____	___	___	_____	PDR CF
_____	___	___	_____	PDR CF
_____	___	___	_____	PDR CF
_____	___	___	_____	PDR CF
_____	___	___	_____	PDR CF
_____	___	___	_____	PDR CF
_____	___	___	_____	PDR CF
_____	___	___	_____	PDR CF

**NEW CODES**

AA	RA	DKT	TASK	F2	DESCRIPTION:
AA	RA	DKT	TASK	F2	_____
AA	RA	DKT	TASK	F2	_____
AA	RA	DKT	TASK	F2	_____
AA	RA	DKT	TASK	F2	_____
AA	RA	DKT	TASK	F2	_____
AA	RA	DKT	TASK	F2	_____
AA	RA	DKT	TASK	F2	_____
AA	RA	DKT	TASK	F2	_____

**PRIMARY FILE LOCATION/LEVEL**

**DSB #:** \_\_\_\_\_

\_\_\_\_\_  
**FCEN**      **F1**      **F2**      **F3**

**NOTES/SPECIAL INSTRUCTIONS**

Generate New Label	INDEXER QC DDC
Encl Contains Prop Info	Generate New RIDS Sheet
Encl Contains Foldout Pages	Refilm: PDR CF PROP
	Do Not Refilm

\_\_\_\_\_

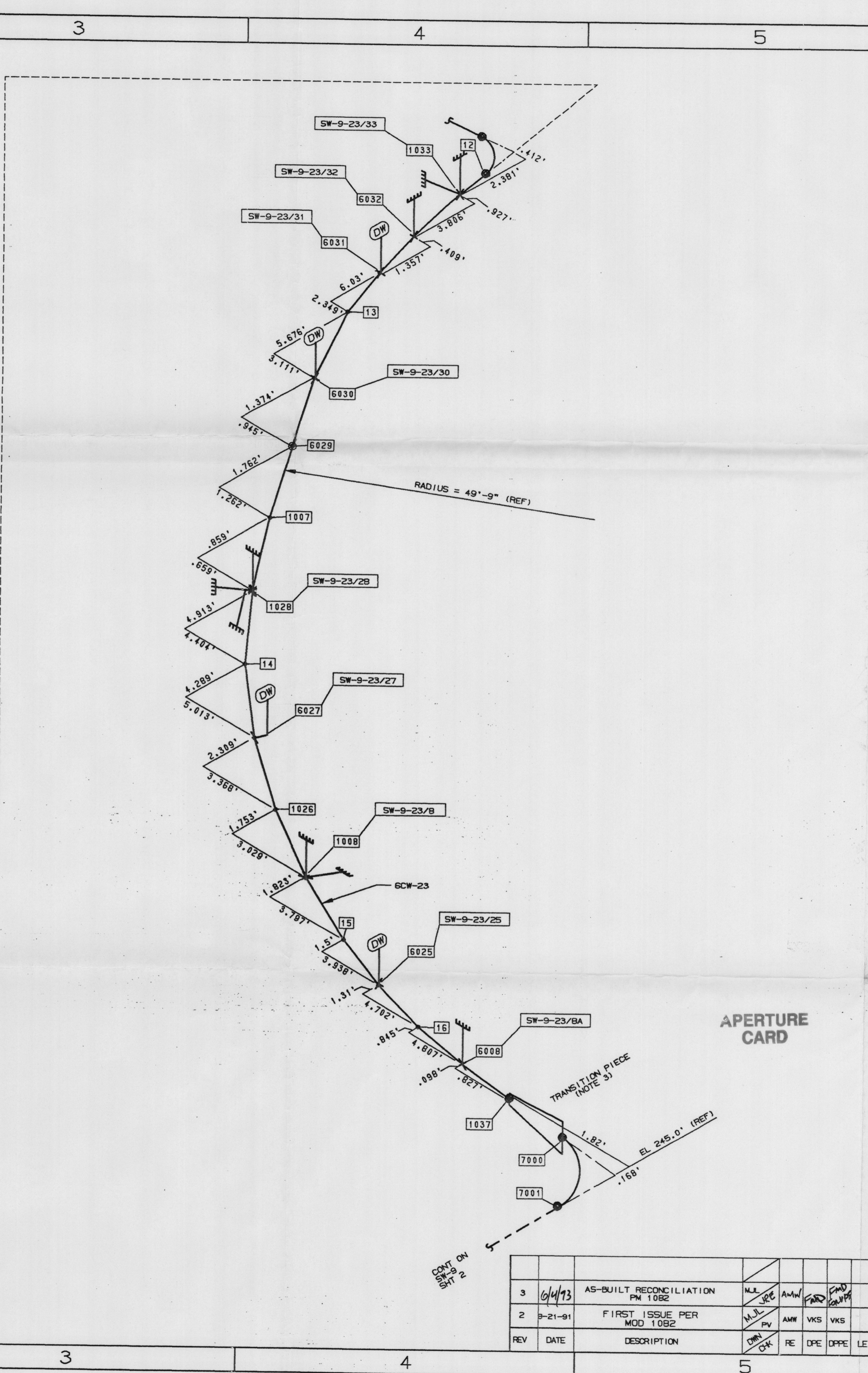
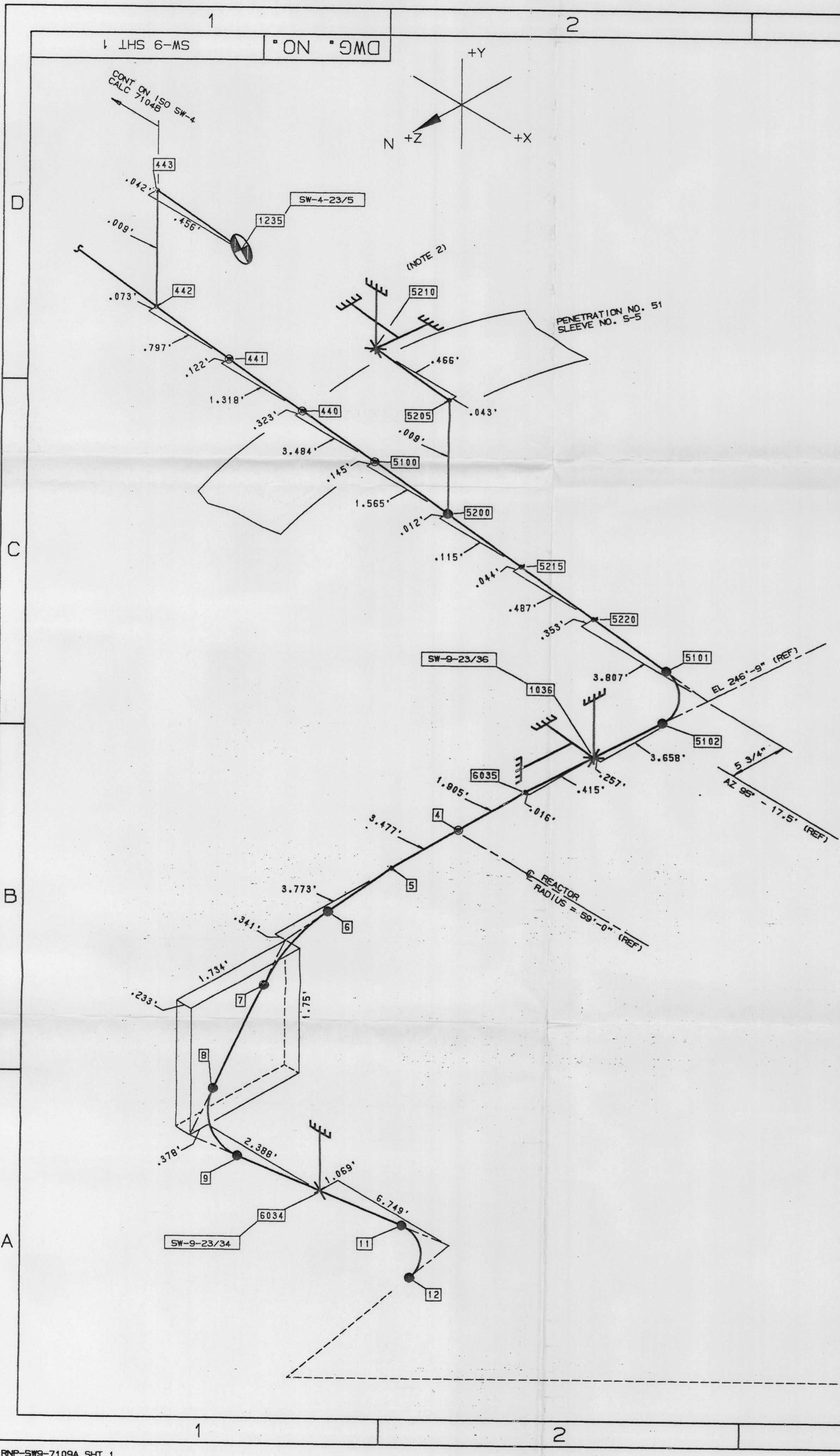
\_\_\_\_\_

\_\_\_\_\_

**NUCLEAR DOCUMENTS SYSTEM**



**ADMIN:** \_\_\_\_\_ **RIDS:** \_\_\_\_\_



TYPE OF ANALYSIS									
<input checked="" type="checkbox"/> SEISMIC	<input type="checkbox"/> NON-SEISMIC	<input checked="" type="checkbox"/> B31.1	<input type="checkbox"/> ASME						
PIPE PROPERTIES									
LINE NO.	LINE SPEC	O.D.	THK	MATERIAL	INSUL THK	OPER TEMP	DES PRESS	DES TEMP	
6CW-23	M027	5.625	.134	ALGXN	1"	95	150	125	
6CW-23	M027	5.625	.240	ALGXN	1"	95	150	125	
NODE 442 TO 5200									
NODE 5200 TO 5215		5.857	.334	SS		95	150	125	
NODE 1235 TO 443		5.625	.134	SA312-304	1"	95	150	125	
NODE 5205 TO 5210									
VALVE PROPERTIES									
VALVE NO.	SIZE	VALVE WEIGHT	OPERATOR						
			WT	C.G.					
ANCHOR MOVEMENTS									
NODE NO.	MOVEMENTS	OPERATING CONDITIONS							
NA	$\Delta X$ $\Delta Y$ $\Delta Z$								
	SOURCE								
REFERENCE DOCUMENTS									
FLOW DIAG.	6-190199 SHT 1,4	REV	39,40						
PIPE DWG	SK-1082-V-2001,2002,2003	REV	1,1,0						
STRESS CALC	6-190225 SHT 3,4,5	REV	B						
RESPONSE SPECTRA	SW-9-7109A	REV	B						
	REACTOR CONT BLDG EL 289								
	REACTOR INNER STRUCT EL 232.5,248,272.5								
NOTES & REFERENCES									
1. UNLESS OTHERWISE SPECIFIED DIMENSIONS ARE GIVEN TO CENTERLINE OF TEES AND ELBOWS. 2. SUPPORT AT NODE 5210 IS FOR ANALYTICAL PURPOSES ONLY. 3. TRANSITION PIECE IS 6" SCH 10S TO 6" (t = .24"). 4. ALGXN MATERIAL IS: 6" SCH 10S PIPE ASTM B-688 FABR ASTM A358 CL 2 FITTINGS ASTM B-366 CL WP-S OR WP-W 6" (t = .24") PIPE ASTM B-688, FABR ASTM A358 CL2 FITTINGS ASTM B-366 CL WP-S OR WP-W ELBOWS t = .268" 5. PIPING BETWEEN TRANSITION PIECES (INCLUSIVE) WAS REPLACED BY MOD 1082. ALL OTHER PIPING EXCEPT AT PENETRATION ASSEMBLY WAS REPLACED BY PLANT MOD 858 REV. 1.									
NOTE: THIS DRAWING SUPERSEDES ISD SW-9 SHT'S 1-4 REV. 1 AND SW-9P SHT'S 1-4 REV. 0.									
SUPPORT LEGEND									
	RIGID		SNUBBER		ANCHOR				
	SPRING		AXIAL		DW SUPPORT				
THIS DRAWING IS A PRODUCT OF THE NED CAD/E SYSTEM. ANY PERSONNEL REVISING THIS DOCUMENT SHOULD ENSURE THAT SUCH CHANGES ARE INCORPORATED INTO THE ELECTRONIC DRAWING DATABASE BEFORE FINAL APPROVAL. CONTACT THE APPROPRIATE NED DISCIPLINE IF THERE ARE ANY QUESTIONS.									
NUCLEAR SAFETY RELATED (O-LIST) YES <input checked="" type="checkbox"/> NO <input type="checkbox"/> PARTIAL <input type="checkbox"/> F.P.-0 <input type="checkbox"/> R.W.-0 <input type="checkbox"/>									
CAROLINA POWER & LIGHT COMPANY NUCLEAR ENGINEERING DEPARTMENT - RALEIGH, N.C.									
PLANT: ROBINSON NUCLEAR PLANT UNIT 2 SCALE: NTS									
TITLE: REACTOR CONTAINMENT BLDG SERVICE WATER TO HVH-4 STRESS ISOMETRIC									
SHT 1 OF 6 REV 3									

9903030260