

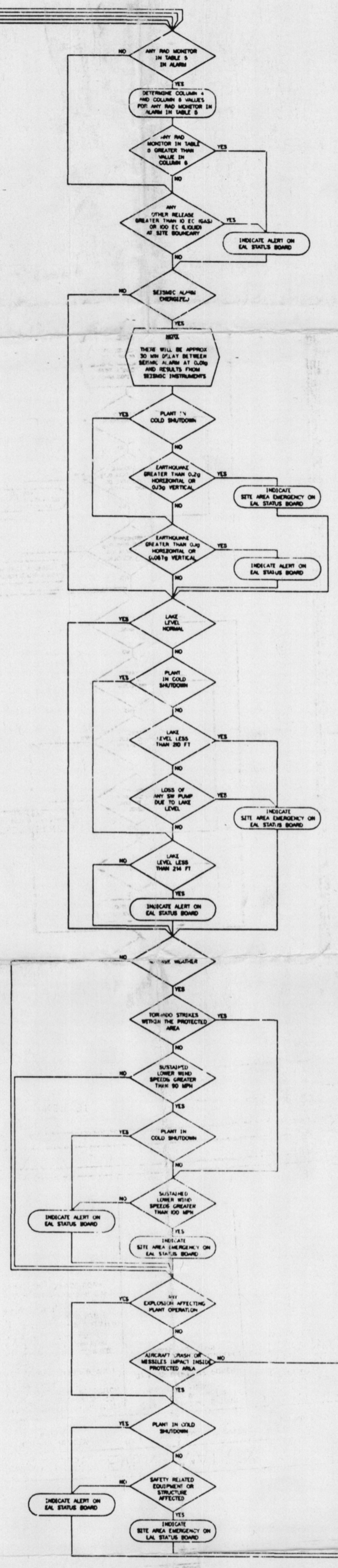
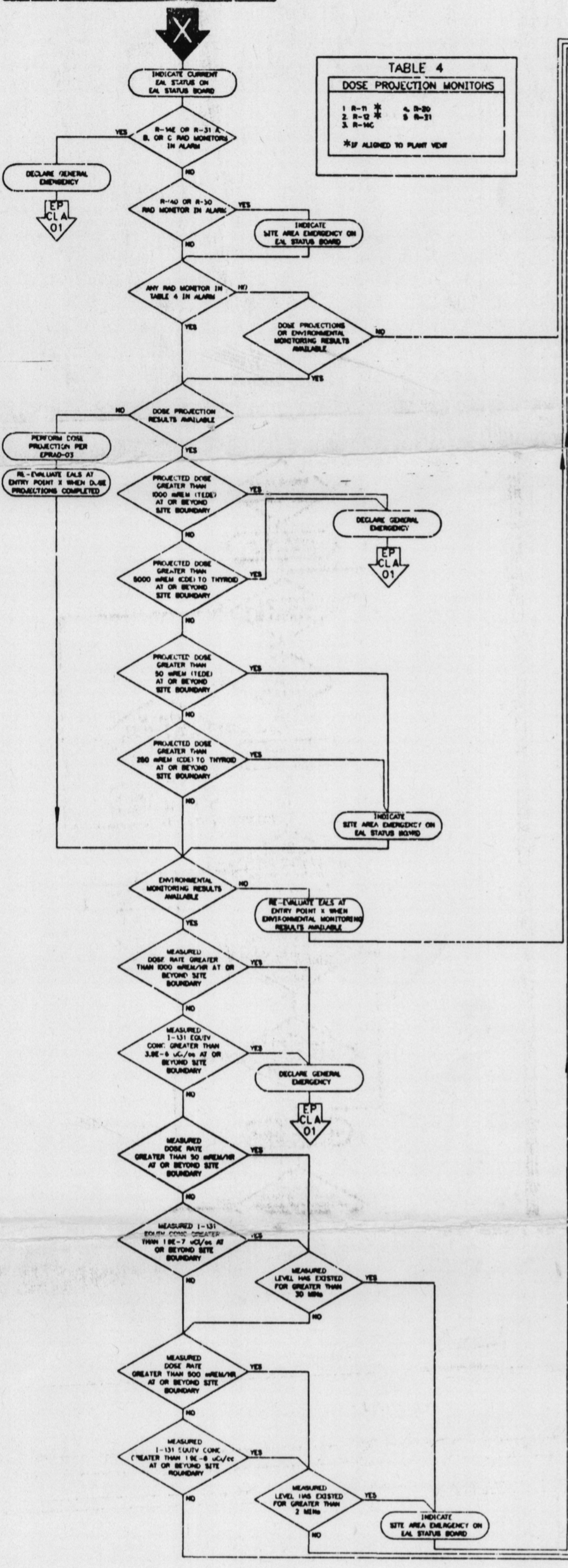
9703110098

EAL-2

**TABLE 4
DOSE PROJECTION MONITORS**

1 R-11	4 R-20
2 R-12	5 R-21
3 R-13	

*IF ALLOWED TO PLANT VIEW



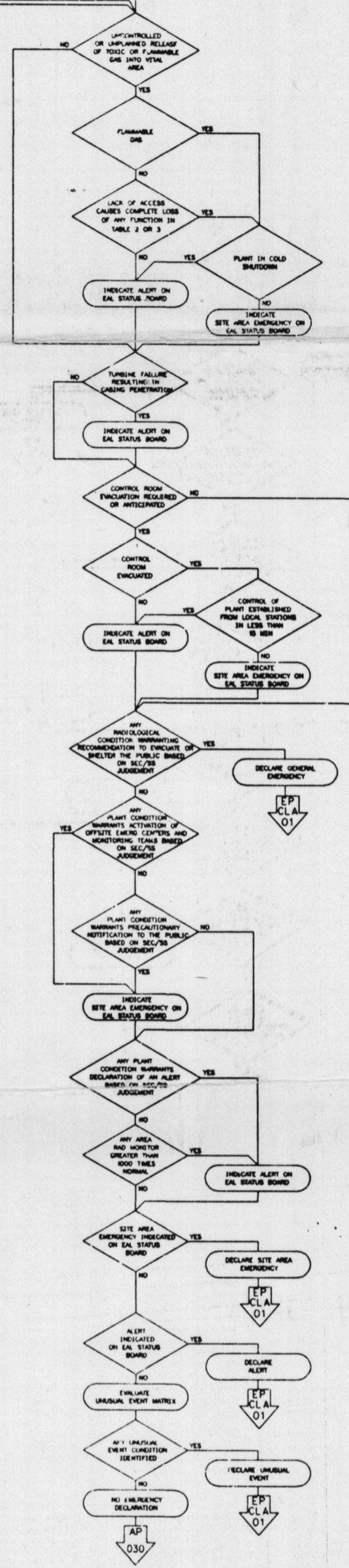
EAL STATUS BOARD

GENERAL EMERGENCY _____
 SITE AREA EMERGENCY _____
 ALERT _____
 UNUSUAL EVENT _____

H.B. ROBINSON STEAM ELECTRIC PLANT UNIT #2

REVISION NO.	DATE	RECOMMENDED BY	APPROVED BY
11		GLINN JOHNSON	ROD KRICH
SUPERVISOR-EMERGENCY PREPAREDNESS DATE		APPROVED BY	
		ROD KRICH	
MANAGER-REGULATORY AFFAIRS DATE		APPROVED BY	
		ROD KRICH	

CONTROLLED RECIPIENT ID



**TABLE 5
EFFLUENT RADIATION MONITOR EC CALCULATIONS**

1 RAD MONITOR	2 CURRENT SATURATION	3 COLUMN 4 *	5 COLUMN 5 *	6 COLUMN 6 *
R-14C		X 2	X 10	
R-18		X 80	X 10	
R-19A		X 120	X 10	
R-19B		X 120	X 10	
R-19C		X 120	X 10	
R-20		X 30	X 10	
R-21		X 10	X 10	
R-27		X 10	X 10	

* TAKEN FROM PROCESS MONITOR NOTIFICATION CURRENT RELEASE PERMIT OR ROBINSON UNIT #2 STATUS BOARD

UNUSUAL EVENT MATRIX

A	B	C	D	E	F	G	H	I
<p>1) ANY RAD MONITORS IN TABLE 5 IN ALARM AND GREATER THAN VALUE IN COLUMN 4</p> <p>2) ANY OTHER RELEASE GREATER THAN 1 EC (GAS) OR 10 EC (LIQUID) AT OR BEYOND SITE BOUNDARY</p>	<p>1) RCS ACTIVITY GREATER THAN 60 uCi/gm DOSE EQUIV (1-13) AT FULL POWER (SEE TECH SPEC FIG 3.4.1 FOR LIMIT AT PARTIAL POWER LEVELS)</p> <p>2) RCS ACTIVITY GREATER THAN 1 uCi/gm (DOSE EQUIV 1-13), BUT LESS THAN LIMIT IN (1) ABOVE FOR MORE THAN 48 HOURS</p> <p>3) RCS ACTIVITY GREATER THAN 100 uCi/gm FOR ALL SOTOPES</p> <p>4) R-9 PAD MONITOR INCREASED GREATER THAN 500 uCi/hr IN LAST 30 MIN</p> <p>5) DROP OF SPENT FUEL CASK OF MORE THAN 15" AND NO DAMAGE TO FUEL SUSPECTED</p> <p>6) HANG-UP OF DRY STORAGE CANNISTER PARTIALLY INSERTED INTO HORIZONTAL STORAGE MODULE AT ISFSI</p> <p>7) ISFSI EXHAUST LOUVER BLOCKED FOR MORE THAN 24 HOURS</p>	<p>1) UNCONTROLLED RAPID DEPRESSURIZATION OF SECONDARY SIDE</p> <p>2) MAIN STEAM OR FEEDWATER BREAK</p> <p>3) FAILURE OF ANY S/G SAFETY OR POWY TO RESET BELOW SETPOINT AFTER OPERATION</p> <p>4) S/G BLOWDOWN LINE BREAK RESULTING IN UNCONTROLLED S/G DEPRESSURIZATION</p>	<p>1) FAILURE OF ANY PRESSURIZER SAFETY OR RELIEF VALVE TO CLOSE FOLLOWING REDUCTION OF PRESSURE</p> <p>2) RCS LEAKAGE GREATER THAN 10 GPM</p> <p>3) UNIDENTIFIED RCS LEAKAGE GREATER THAN 1 GPM FOR MORE THAN 12 HOURS</p> <p>4) PRIO TO SEC LEAKAGE GREATER THAN 0.35 GPM PER S/G (GPM TOTAL)</p> <p>5) SEC ACTIVITY GREATER THAN 0.1 uCi/gm 1-13 DOSE EQV</p>	<p>1) FIRE LASTING MORE THAN 10 MINUTES WITHIN THE PROTECTED AREA</p> <p>2) LOSS OF OFFSITE POWER</p> <p>3) LOSS OF BOTH EMERGENCY DIESEL GENERATORS</p>	<p>1) FAILURE OF ALL SITE TELEPHONE AND EMERGENCY TELEPHONE COMMUNICATION CAPABILITY</p> <p>2) UNPLANNED LOSS OF 7 OR MORE ANNUNCIATOR PANELS FOR GREATER THAN 15 MINUTES</p>	<p>1) EVENT 4 (ATTEMPTED ENTRY INTO PROTECTED AREA)</p> <p>2) EVENT 7 (UNSUCCESSFUL ATTEMPTED SABOTAGE)</p> <p>3) NOTIFICATION BY THE PLANT GENERAL MANAGER OR HIS DESIGNEE OF A SERIOUS EVENT 1 (BOMB THREAT) OR EVENT 2 (ATTACK THREAT)</p>	<p>1) ANY ALARM ON SEISMIC MONITOR AND CONFIRMATION OF AN EARTHQUAKE IN THE REGION</p> <p>2) HURRICANE OR TORNADO WITHIN SITE BOUNDARY</p> <p>3) AIRCRAFT CRASH WITHIN SITE BOUNDARY OR UNUSUAL AIRCRAFT ACTIVITY OVER FACILITY</p> <p>4) TRAIN DERAILMENT WITHIN PROTECTED AREA</p> <p>5) SPENT FUEL SHIPMENT CASK CAR DERAILMENT WITHIN THE 1400 FOOT SITE BOUNDARY</p> <p>6) UNPLANNED EXPLOSION WITHIN PROTECTED AREA</p> <p>7) UNPLANNED TOXIC OR FLAMMABLE GAS RELEASE WITHIN PROTECTED AREA</p> <p>8) TURBINE ROTATING COMPONENT FAILURE RESULTING IN A TURBINE TRIP</p> <p>9) LAKE LEVEL LESS THAN 218 FT</p>	<p>1) OTHER PLANT CONDITIONS EXIST THAT WARRANT INCREASED AWARENESS ON THE PART OF THE PLANT OPERATING STAFF, DARLINGTON, LEE, AND CHESTERFIELD COUNTIES, AND THE STATE OF SOUTH CAROLINA</p> <p>2) ANY PLANT CONDITION EXISTS THAT WARRANTS PRECAUTIONARY ACTIVATION OF TSC AND PLACING EOP AND KEY PERSONNEL ON STANDBY</p> <p>3) INABILITY TO REACH REQUIRED SHUTDOWN WITHIN TECHNICAL SPECIFICATION LIMITS</p>

9703110098

ANSTEC APERTURE CARD