

ANSTEC
APERTURE
CARD

9703110096

EAL-1

FPB STATUS BOARD

FUEL FPB	RCS FPB	CONTAINMENT FPB
INTACT	INTACT	INTACT
JEOPARDIZED	JEOPARDIZED	JEOPARDIZED
BREACHED	BREACHED	BREACHED

H.B. ROBINSON STEAM ELECTRIC PLANT UNIT #2

REVISION NO.	DATE	RECOMMENDED BY
10		CLEMY JOHNSON
SUPERVISOR-EMERGENCY PROMPTNESS DATE		APPROVED BY
		ROD RICH
MANAGER-REGULATORY AFFAIRS DATE		CONTROLLED RECEIPT ID

EAL STATUS BOARD

GENERAL EMERGENCY	_____
SITE AREA EMERGENCY	_____
ALERT	_____
UNUSUAL EVENT	_____

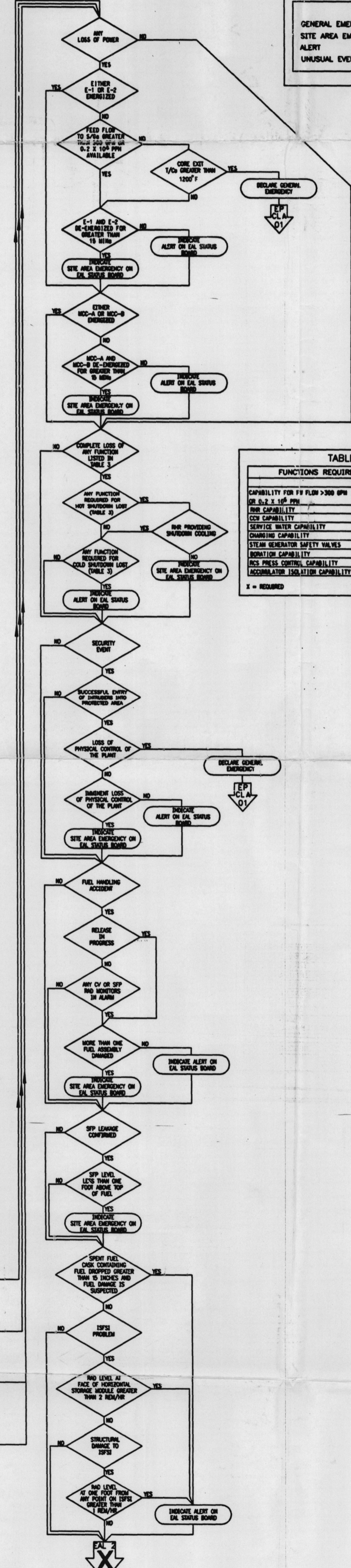
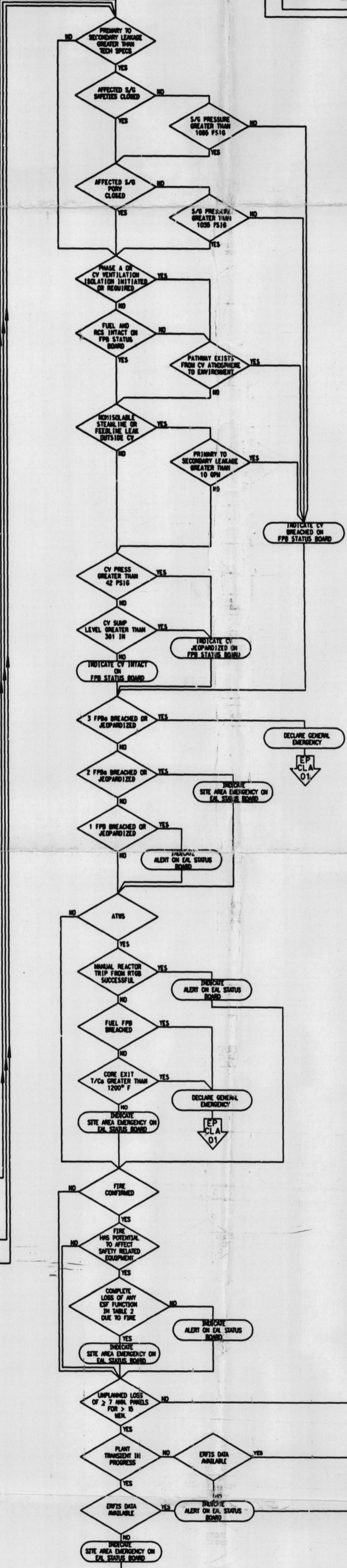
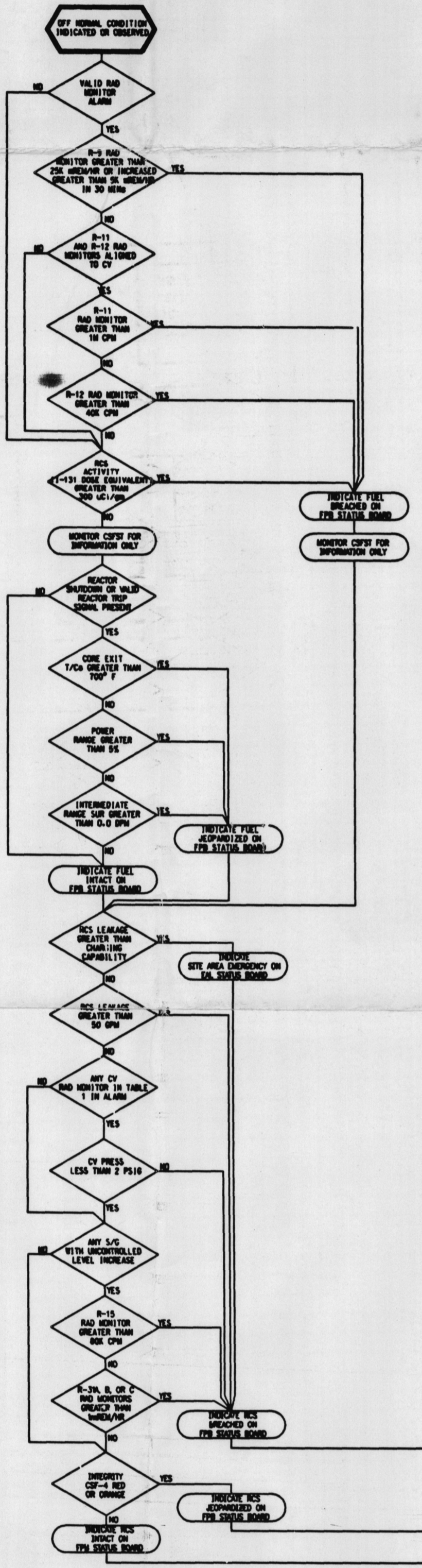


TABLE 3
FUNCTIONS REQUIRED FOR SHUTDOWN

	NOT SHUTDOWN	COLD SHUTDOWN
CAPABILITY FOR FLOW > 300 GPM	X	X
OR 6.2 ± 10% PPM	X	X
ESR CAPABILITY	X	X
COB CAPABILITY	X	X
SERVICE WATER CAPABILITY	X	X
CHARGING CAPABILITY	X	X
STEAM GENERATOR SAFETY VALVES	X	X
ISOLATION CAPABILITY	X	X
RCS PRESS. CONTROL CAPABILITY	X	X
ACCUMULATOR ISOLATION CAPABILITY	X	X

X = REQUIRED

TABLE 1
CV RADIATION MONITORS

1. R-2	4. R-12 *
2. R-7	5. R-32A
3. R-11 *	6. R-32B

*IF ALIGNED TO CV

TABLE 2
ESF FUNCTIONS

*SI	*IVSW
*RWR	*RPS
*CV SPRAY	*REACTOR COOLANT VENT SYSTEM
*MWH 1, 2, 3, 4	*AFW
*POST ACCIDENT CV VENTING	
*CV	