

# ACCELERATED DOCUMENT DISTRIBUTION SYSTEM

REGULATORY INFORMATION DISTRIBUTION SYSTEM (RIDS)

ACCESSION NBR: 9303180179      DOC. DATE: 93/03/09      NOTARIZED: NO      DOCKET #  
 FACIL: 50-261 H.B. Robinson Plant, Unit 2, Carolina Power & Light C      05000261  
 50-400 Shearon Harris Nuclear Power Plant, Unit 1, Carolina      05000400  
 50-325 Brunswick Steam Electric Plant, Unit 1, Carolina Powe      05000325

AUTH. NAME      AUTHOR AFFILIATION  
 WATSON, R.A.      Carolina Power & Light Co.  
 RECIP. NAME      RECIPIENT AFFILIATION  
                          Document Control Branch (Document Control Desk)

SUBJECT: Discusses organization changes re increasing line-mgt  
 accountability for operations, improving effectiveness of  
 support functions & increasing functional consistency among  
 three nuclear sites.

DISTRIBUTION CODE: M006D      COPIES RECEIVED: LTR 1 ENCL 1      SIZE: 5  
 TITLE: Changes of Personnel/Address

NOTES: Application for permit renewal filed.      05000400

	RECIPIENT ID CODE/NAME	COPIES	L	T	R	ENCL	RECIPIENT ID CODE/NAME	COPIES	L	T	R	ENCL
	PD2-1 LA	1	1				PD2-1 PD	1	0			
	MOZAFARI, B	1	1				LE, N	1	1			
	MILANO, P	1	1									
INTERNAL:	ACRS	1	1				ADM STEVENSON, L	1	1			
	ASLBP	1	1				CAA-16B-13	1	1			
	OC/LFMB	1	0				OGC/HDS2	1	1			
	OGC/HDS1	1	1				<del>REG FILE</del> 01	1	1			
	SECY/DSB	1	1									
EXTERNAL:	NRC PDR	1	1									

NOTE TO ALL "RIDS" RECIPIENTS:

PLEASE HELP US TO REDUCE WASTE! CONTACT THE DOCUMENT CONTROL DESK,  
 ROOM P1-37 (EXT. 504-2065) TO ELIMINATE YOUR NAME FROM DISTRIBUTION  
 LISTS FOR DOCUMENTS YOU DON'T NEED!

TOTAL NUMBER OF COPIES REQUIRED: LTR 15 ENCL 13



**Carolina Power & Light Company**

P. O. Box 1551 • Raleigh, N. C. 27602

MAR 09 1993

R. A. WATSON  
Senior Vice President  
Nuclear Generation

SERIAL: NLS-93-074

United States Nuclear Regulatory Commission  
ATTENTION: Document Control Desk  
Washington, DC 20555

H. B. ROBINSON STEAM ELECTRIC PLANT, UNIT NO. 2  
DOCKET NO. 50-261/LICENSE NO. DPR-23

SHEARON HARRIS NUCLEAR POWER PLANT  
DOCKET NO. 50-400/LICENSE NO. NPF-63

BRUNSWICK STEAM ELECTRIC PLANT, UNIT NOS. 1 AND 2  
DOCKET NOS. 50-325 AND 50-324/LICENSE NOS. DPR-71 AND DPR-62

ORGANIZATION CHANGES

Gentlemen:

As described in our correspondence to you on November 30, 1992 (NLS-92-317), the Nuclear Generation Group has undertaken an organizational study as part of our Corporate Improvement Initiatives (Initiative No. 1). The initiatives are intended to lead us to world class performance in safety, generation, and cost. The organization changes will prepare the NGG to meet these goals by:

- o increasing line-management accountability for operations,
- o improving the effectiveness of support functions, and
- o increasing functional consistency among the three nuclear sites.

CP&L has completed the initial phases of the study regarding the overall organizational structure for the Nuclear Generation Group. The organizational structure covers primary functions and units at the three nuclear plants and functions in the four corporate departments. Summary charts are included as Attachment 1 for your information. The specific organizational changes will be incorporated into the Final Safety Analysis Report for each of the nuclear facilities in a manner and timeframe consistent with the requirements of 10 CFR 50.71(e)(4). We will keep you informed as we make the transition into the new structure for the Nuclear Generation Group, finalize the implementation plan, and staff the key positions.

Questions regarding this matter may be referred to D. C. McCarthy at (919) 546-6901.

Yours very truly,

*R. A. Watson*  
R. A. Watson

180017

DCM/SDC

Attachment

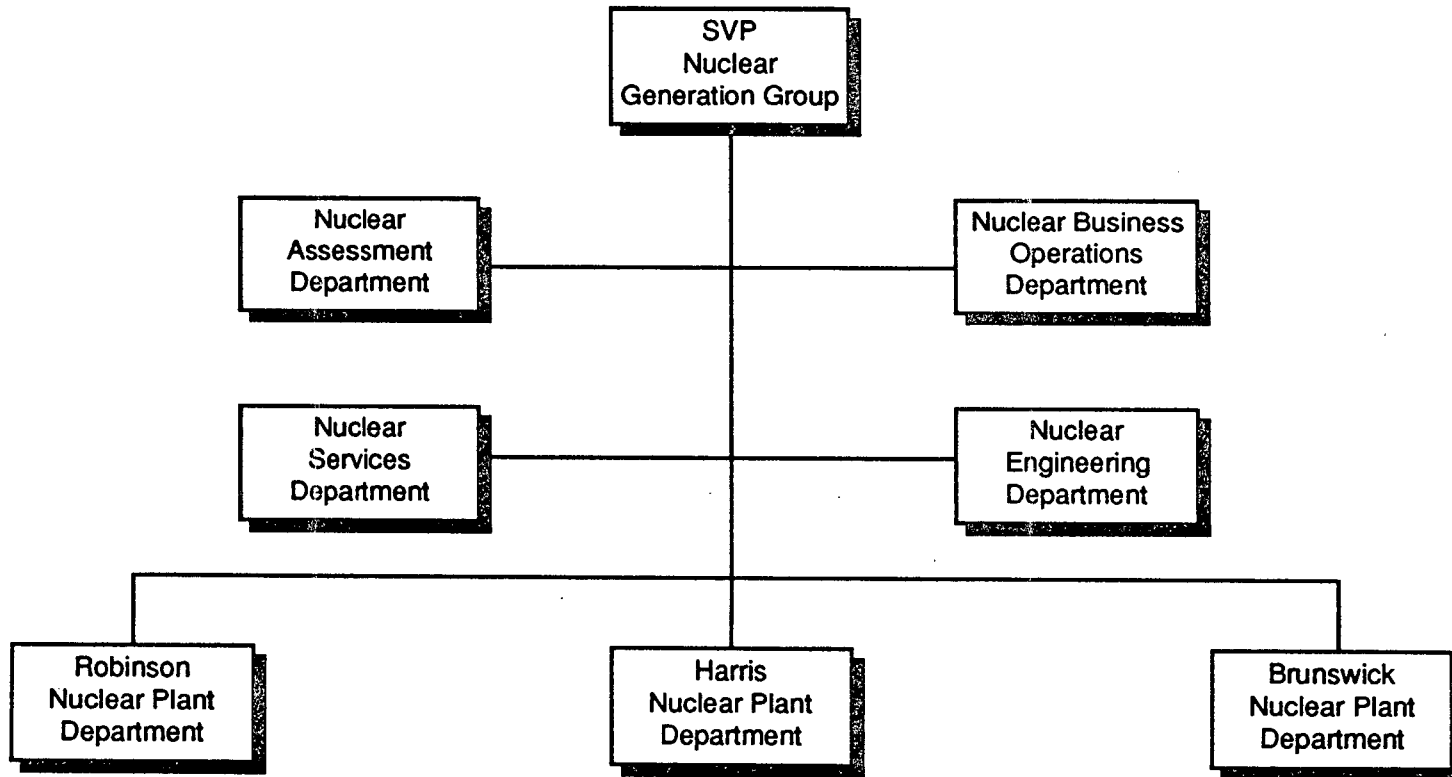
- cc: Mr. S. D. Ebnetter      Ms. B. L. Mozafari  
 Mr. L. W. Garner      Mr. R. L. Prevatte  
 Mr. N. B. Le      Mr. J. E. Tedrow  
 Mr. P. D. Milano

9303180179 930309  
PDR ADDCK 05000261  
H PDR

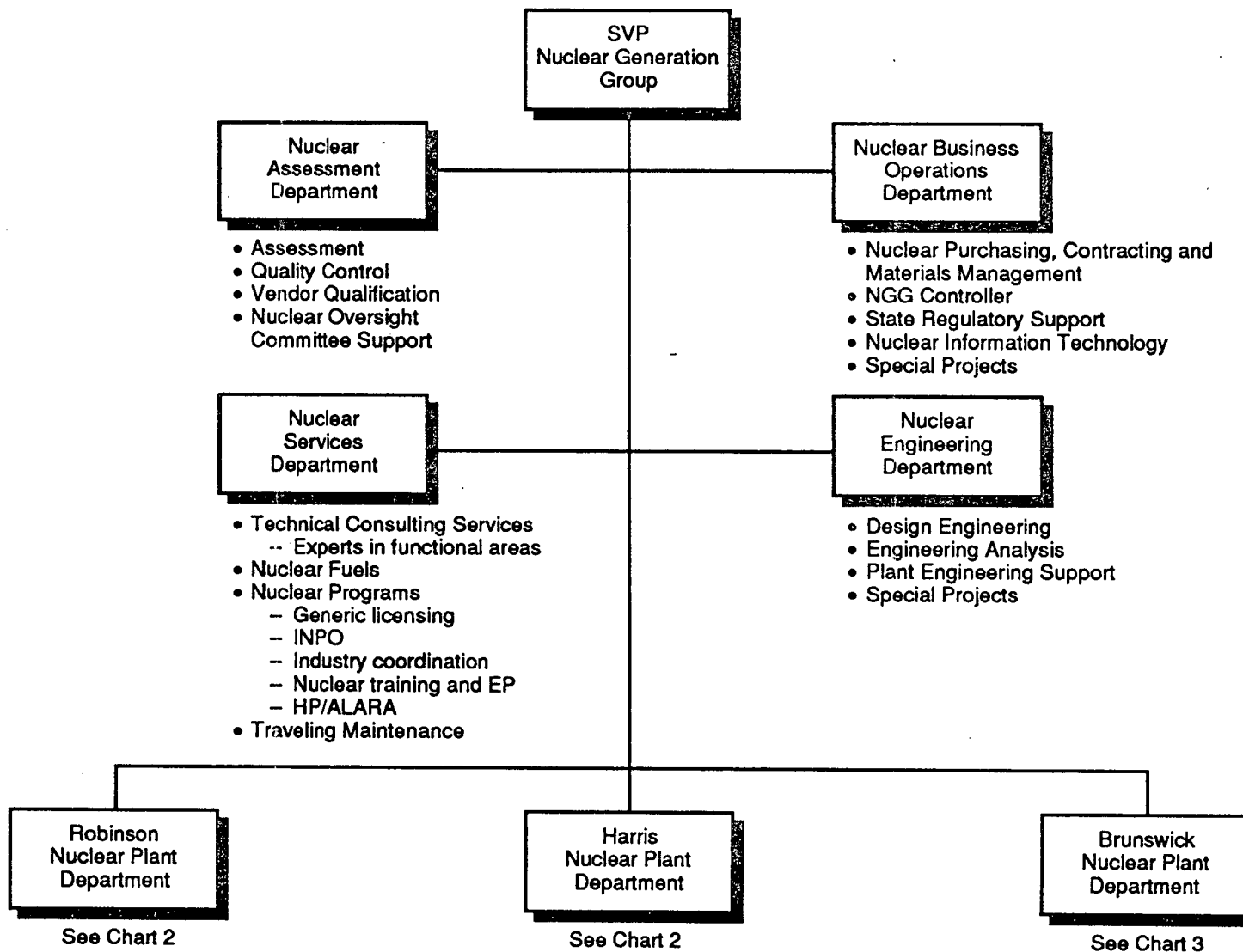
*MOORE*

# Nuclear Organization Study

## Overall Structure

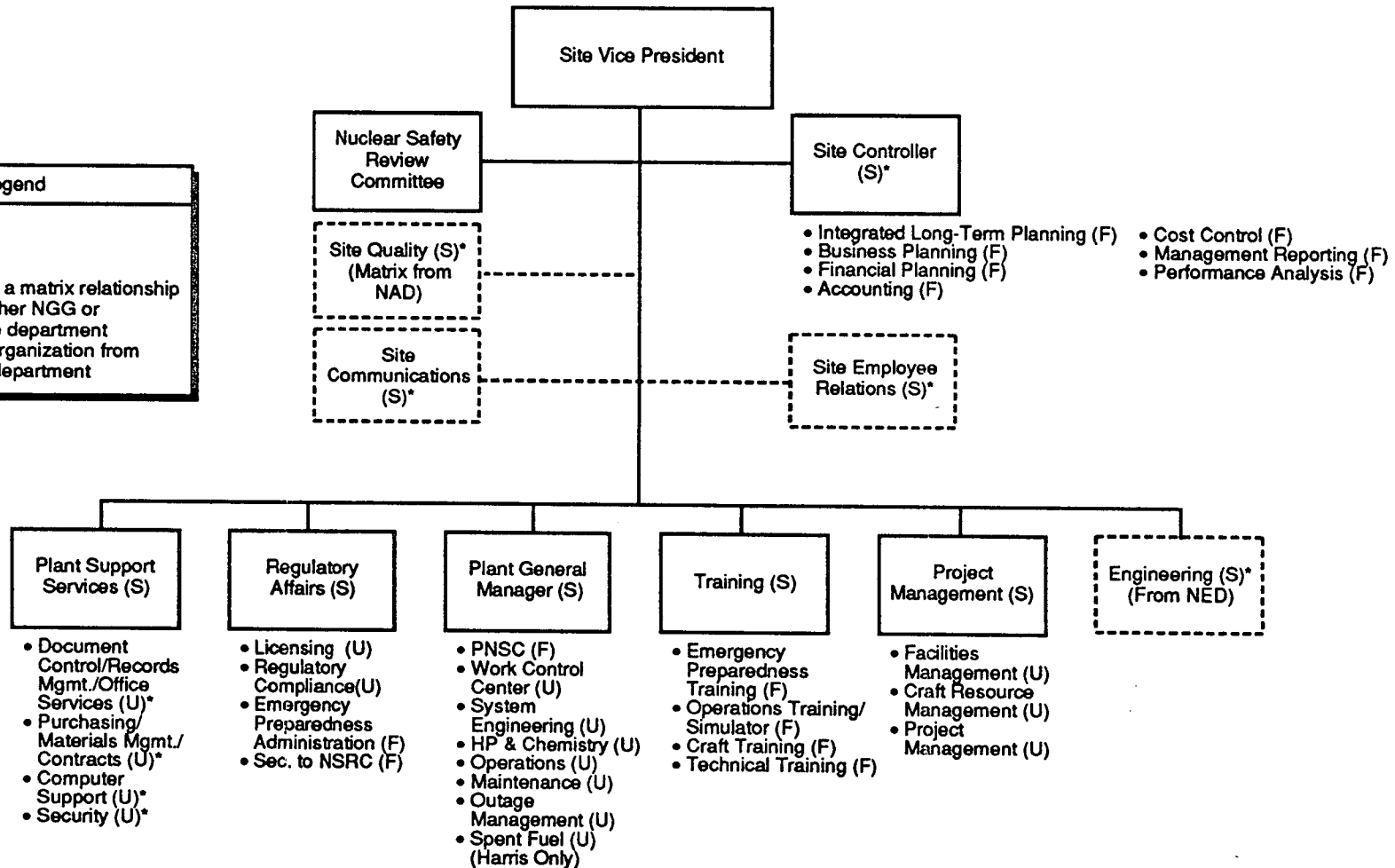


**Overall Structure of Nuclear Generation Group  
(Primary Functions Listed Under Departments)**



# Organization Structure -- Harris and Robinson Nuclear Plants (Chart 2)

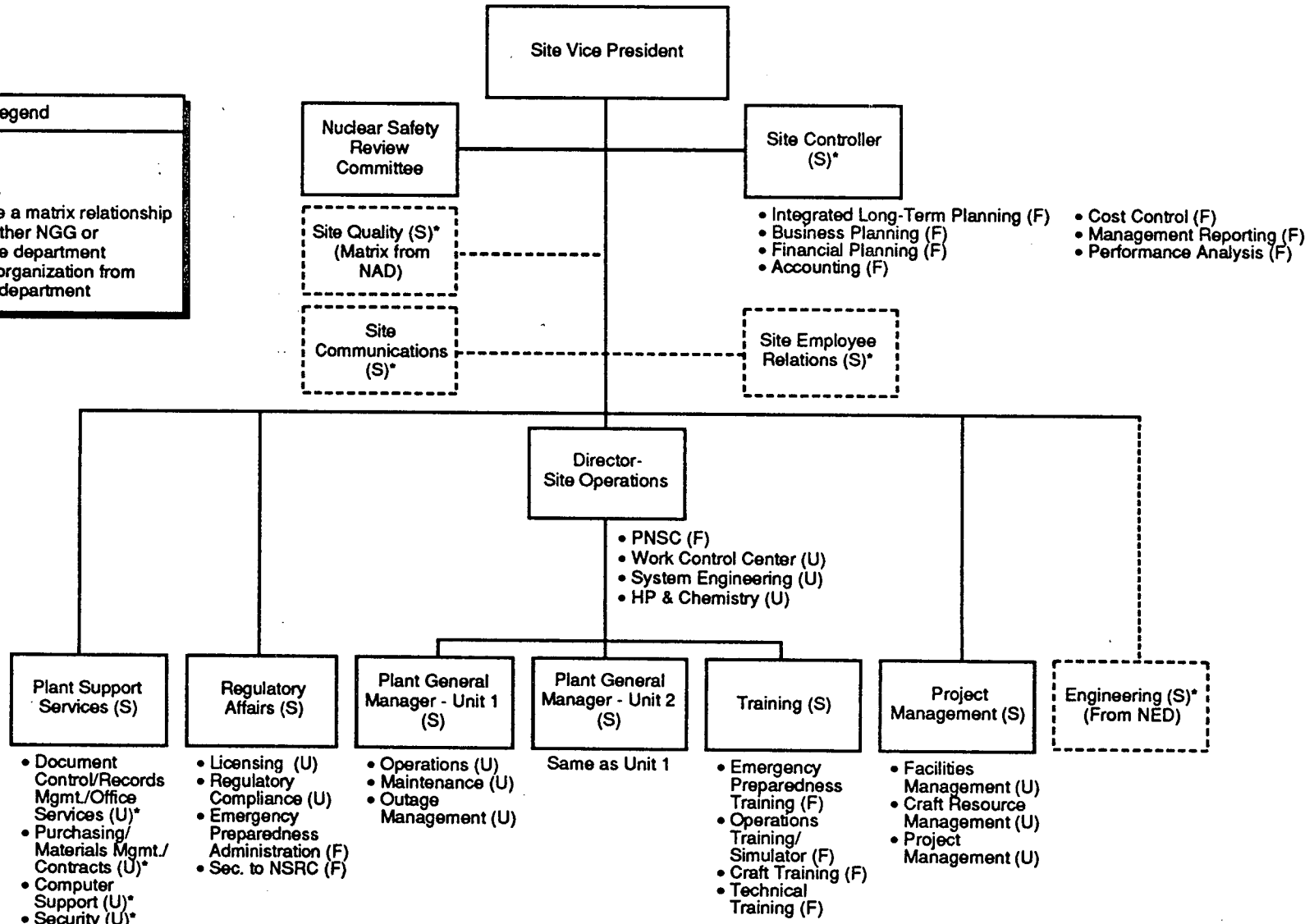
Legend	
S	= Section
U	= Unit
F	= Function
*	= Will have a matrix relationship with another NGG or corporate department
[---]	= On-site organization from another department



Functions may be either organizational units or performed by direct contributors.

# Organization Structure -- Brunswick Nuclear Plant (Chart 3)

Legend	
S	= Section
U	= Unit
F	= Function
*	= Will have a matrix relationship with another NGG or corporate department
- - -	= On-site organization from another department



Functions may be either organizational units or performed by direct contributors.