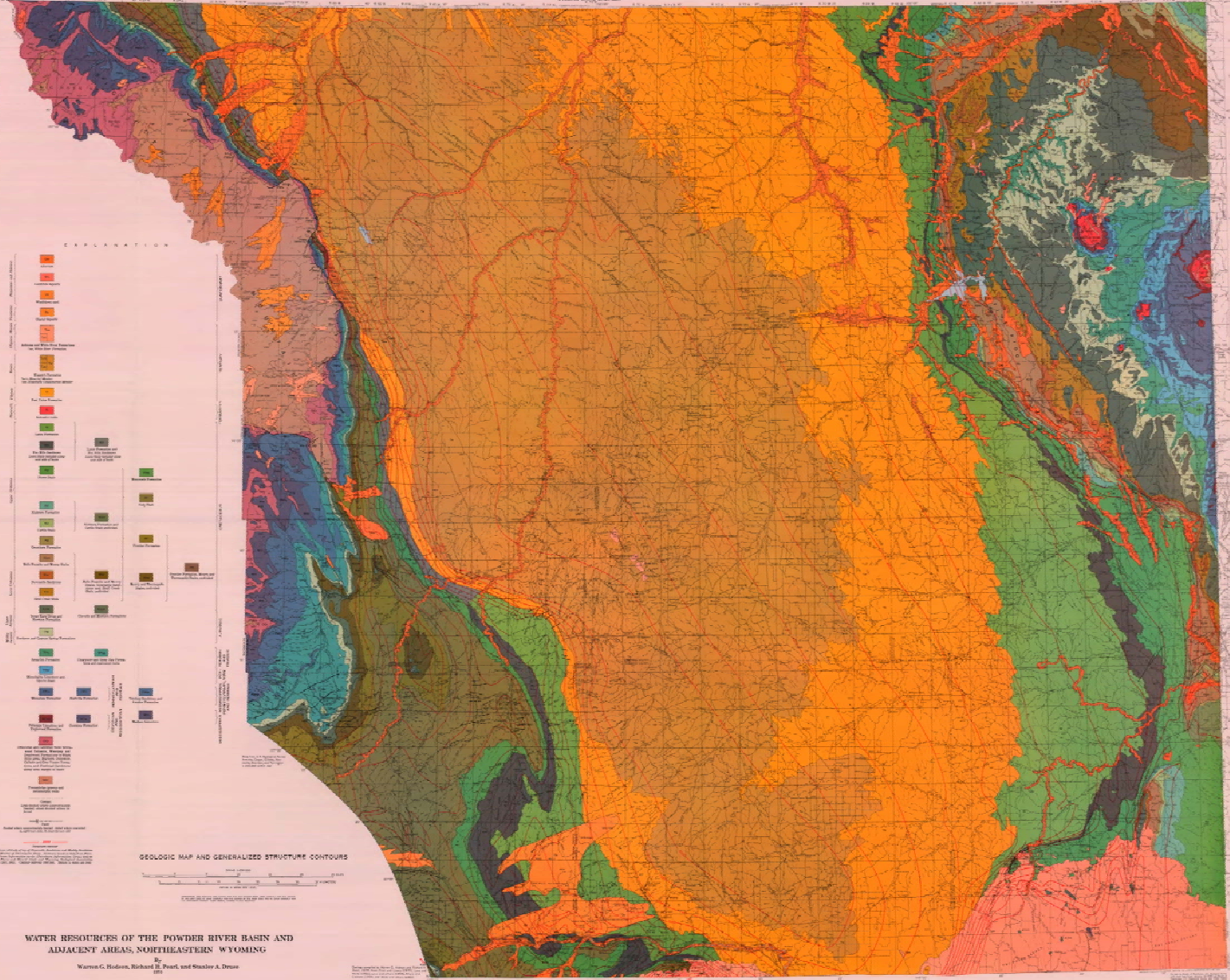




**SYNOPSIS**  
This geologic map and generalized structure contours of the Powder River Basin and adjacent areas, northeastern Wyoming, were prepared by the U.S. Geological Survey as part of the water resources study of the Powder River Basin. The map shows the geologic structure and general structure contours of the basin and adjacent areas. The geologic structure is shown by generalized structure contours and the general structure contours are shown by solid lines. The map is based on geologic maps of the Powder River Basin and adjacent areas, northeastern Wyoming, prepared by the U.S. Geological Survey. The map is based on geologic maps of the Powder River Basin and adjacent areas, northeastern Wyoming, prepared by the U.S. Geological Survey. The map is based on geologic maps of the Powder River Basin and adjacent areas, northeastern Wyoming, prepared by the U.S. Geological Survey.

**EXPLANATION**

Color swatches	Geologic Formations
Color swatches	Generalized Structure Contours
Color swatches	Topographic Contours
Color swatches	Water Resources



**WATER RESOURCES OF THE POWDER RIVER BASIN AND ADJACENT AREAS, NORTHEASTERN WYOMING**

By  
Warren C. Hildner, Richard H. Pratt, and Stanley A. Druce

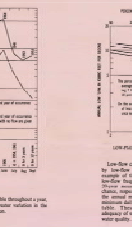
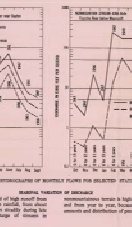
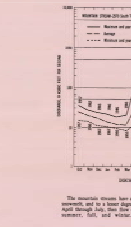
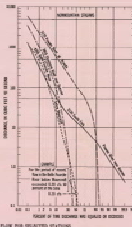
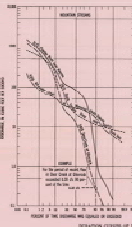
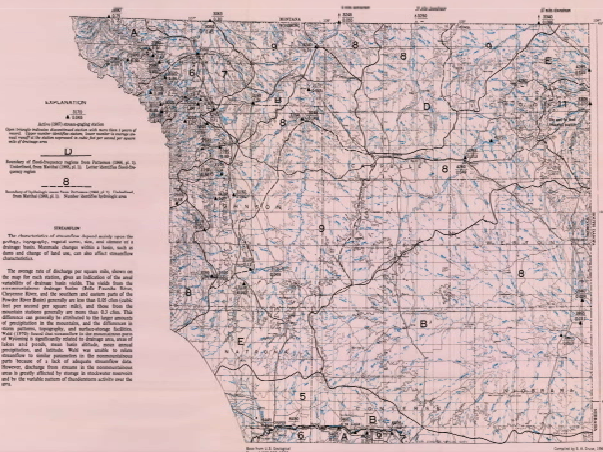








### SURFACE WATER



STREAM-GAGING STATIONS MEAN ANNUAL DISCHARGE, FLOOD FREQUENCY REGIONS AND HYDROLOGIC AREAS

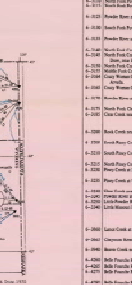
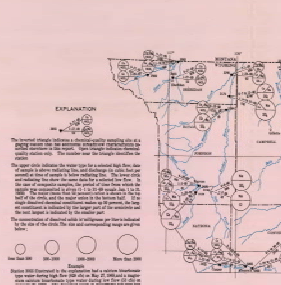
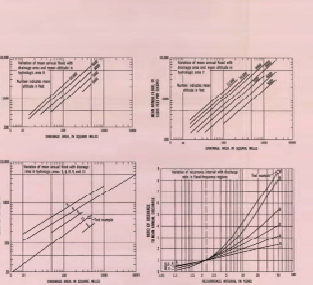
Flow-direction curves are useful in approximating the distribution of discharge. The probable distribution of discharge from a point on a watershed is shown by a flow-direction curve. A discharge diagram is shown at the right showing the probable distribution of discharge from a point on a watershed. The discharge diagram is shown at the right showing the probable distribution of discharge from a point on a watershed. The discharge diagram is shown at the right showing the probable distribution of discharge from a point on a watershed.

The discharge diagram is shown at the right showing the probable distribution of discharge from a point on a watershed. The discharge diagram is shown at the right showing the probable distribution of discharge from a point on a watershed. The discharge diagram is shown at the right showing the probable distribution of discharge from a point on a watershed.

The discharge diagram is shown at the right showing the probable distribution of discharge from a point on a watershed. The discharge diagram is shown at the right showing the probable distribution of discharge from a point on a watershed. The discharge diagram is shown at the right showing the probable distribution of discharge from a point on a watershed.

The discharge diagram is shown at the right showing the probable distribution of discharge from a point on a watershed. The discharge diagram is shown at the right showing the probable distribution of discharge from a point on a watershed. The discharge diagram is shown at the right showing the probable distribution of discharge from a point on a watershed.

The discharge diagram is shown at the right showing the probable distribution of discharge from a point on a watershed. The discharge diagram is shown at the right showing the probable distribution of discharge from a point on a watershed. The discharge diagram is shown at the right showing the probable distribution of discharge from a point on a watershed.



**QUALITY OF WATER DATA AND RELATED GENERAL ANALYSIS**

The quality of water is a term used to describe the physical, chemical, and biological characteristics of water. The quality of water is a term used to describe the physical, chemical, and biological characteristics of water. The quality of water is a term used to describe the physical, chemical, and biological characteristics of water.

The quality of water is a term used to describe the physical, chemical, and biological characteristics of water. The quality of water is a term used to describe the physical, chemical, and biological characteristics of water. The quality of water is a term used to describe the physical, chemical, and biological characteristics of water.

The quality of water is a term used to describe the physical, chemical, and biological characteristics of water. The quality of water is a term used to describe the physical, chemical, and biological characteristics of water. The quality of water is a term used to describe the physical, chemical, and biological characteristics of water.

Station	Name	Discharge	Basin	Annual Discharge		Annual Discharge		Remarks	Factor affecting annual flow
				Mean	Peak	Mean	Peak		
10000	Little Snake River near Fort Collins, Wyo.	100	100	100	100	100	100	100	100
10001	Little Snake River near Fort Collins, Wyo.	100	100	100	100	100	100	100	100
10002	Little Snake River near Fort Collins, Wyo.	100	100	100	100	100	100	100	100
10003	Little Snake River near Fort Collins, Wyo.	100	100	100	100	100	100	100	100
10004	Little Snake River near Fort Collins, Wyo.	100	100	100	100	100	100	100	100
10005	Little Snake River near Fort Collins, Wyo.	100	100	100	100	100	100	100	100
10006	Little Snake River near Fort Collins, Wyo.	100	100	100	100	100	100	100	100
10007	Little Snake River near Fort Collins, Wyo.	100	100	100	100	100	100	100	100
10008	Little Snake River near Fort Collins, Wyo.	100	100	100	100	100	100	100	100
10009	Little Snake River near Fort Collins, Wyo.	100	100	100	100	100	100	100	100
10010	Little Snake River near Fort Collins, Wyo.	100	100	100	100	100	100	100	100
10011	Little Snake River near Fort Collins, Wyo.	100	100	100	100	100	100	100	100
10012	Little Snake River near Fort Collins, Wyo.	100	100	100	100	100	100	100	100
10013	Little Snake River near Fort Collins, Wyo.	100	100	100	100	100	100	100	100
10014	Little Snake River near Fort Collins, Wyo.	100	100	100	100	100	100	100	100
10015	Little Snake River near Fort Collins, Wyo.	100	100	100	100	100	100	100	100
10016	Little Snake River near Fort Collins, Wyo.	100	100	100	100	100	100	100	100
10017	Little Snake River near Fort Collins, Wyo.	100	100	100	100	100	100	100	100
10018	Little Snake River near Fort Collins, Wyo.	100	100	100	100	100	100	100	100
10019	Little Snake River near Fort Collins, Wyo.	100	100	100	100	100	100	100	100
10020	Little Snake River near Fort Collins, Wyo.	100	100	100	100	100	100	100	100
10021	Little Snake River near Fort Collins, Wyo.	100	100	100	100	100	100	100	100
10022	Little Snake River near Fort Collins, Wyo.	100	100	100	100	100	100	100	100
10023	Little Snake River near Fort Collins, Wyo.	100	100	100	100	100	100	100	100
10024	Little Snake River near Fort Collins, Wyo.	100	100	100	100	100	100	100	100
10025	Little Snake River near Fort Collins, Wyo.	100	100	100	100	100	100	100	100
10026	Little Snake River near Fort Collins, Wyo.	100	100	100	100	100	100	100	100
10027	Little Snake River near Fort Collins, Wyo.	100	100	100	100	100	100	100	100
10028	Little Snake River near Fort Collins, Wyo.	100	100	100	100	100	100	100	100
10029	Little Snake River near Fort Collins, Wyo.	100	100	100	100	100	100	100	100
10030	Little Snake River near Fort Collins, Wyo.	100	100	100	100	100	100	100	100
10031	Little Snake River near Fort Collins, Wyo.	100	100	100	100	100	100	100	100
10032	Little Snake River near Fort Collins, Wyo.	100	100	100	100	100	100	100	100
10033	Little Snake River near Fort Collins, Wyo.	100	100	100	100	100	100	100	100
10034	Little Snake River near Fort Collins, Wyo.	100	100	100	100	100	100	100	100
10035	Little Snake River near Fort Collins, Wyo.	100	100	100	100	100	100	100	100
10036	Little Snake River near Fort Collins, Wyo.	100	100	100	100	100	100	100	100
10037	Little Snake River near Fort Collins, Wyo.	100	100	100	100	100	100	100	100
10038	Little Snake River near Fort Collins, Wyo.	100	100	100	100	100	100	100	100
10039	Little Snake River near Fort Collins, Wyo.	100	100	100	100	100	100	100	100
10040	Little Snake River near Fort Collins, Wyo.	100	100	100	100	100	100	100	100
10041	Little Snake River near Fort Collins, Wyo.	100	100	100	100	100	100	100	100
10042	Little Snake River near Fort Collins, Wyo.	100	100	100	100	100	100	100	100
10043	Little Snake River near Fort Collins, Wyo.	100	100	100	100	100	100	100	100
10044	Little Snake River near Fort Collins, Wyo.	100	100	100	100	100	100	100	100
10045	Little Snake River near Fort Collins, Wyo.	100	100	100	100	100	100	100	100
10046	Little Snake River near Fort Collins, Wyo.	100	100	100	100	100	100	100	100
10047	Little Snake River near Fort Collins, Wyo.	100	100	100	100	100	100	100	100
10048	Little Snake River near Fort Collins, Wyo.	100	100	100	100	100	100	100	100
10049	Little Snake River near Fort Collins, Wyo.	100	100	100	100	100	100	100	100
10050	Little Snake River near Fort Collins, Wyo.	100	100	100	100	100	100	100	100

### WATER RESOURCES OF THE POWDER RIVER BASIN AND ADJACENT AREAS, NORTHEASTERN WYOMING

By  
Warren E. Hudson, Richard E. Pearl, and Stanley A. Upton