

J  
NORTH

J'  
SOUTH

Elevation Above  
Sea Level

Elevation Above  
Sea Level

3,950

3,950

3,700

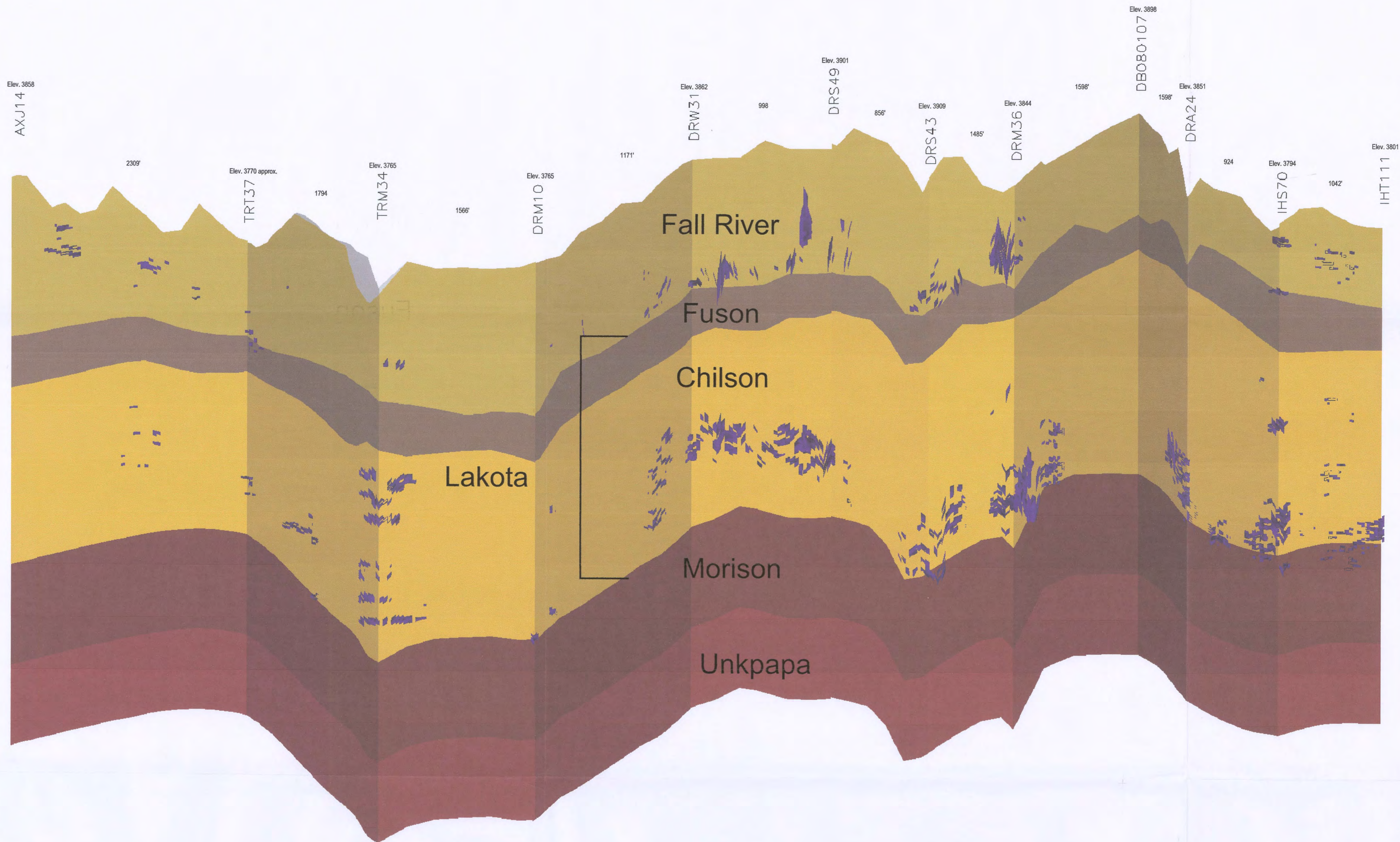
3,700

3,450

3,450

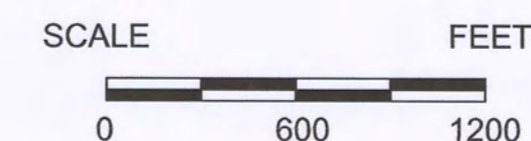
3,200

3,200



vertical exaggeration = 10X

Uranium Ore 0.02%  
Grade Cutoff



D82

CONSULTANT		REVISIONS		PROJECT		
		#	DRAWN	CHECKED	APPROVED	DATE
CHECK SCALES		PLOT DATE		DATE		
If this bar does not measure 1 inch this map is not at its original scale		11-Nov-2008		11-Nov-2008		
DRAWN		RC		CHECKED		
SCALE		As Noted		FILENAME		
Arch D 24" x 36"				c:\powertech\south dakota\dewey burdock\autocad\2008\sections 10-15-2008\j-j\jxsec j-j ore 11-11-08.dwg		
<p><b>POWERTECH (USA) INC.</b> <b>PLATE 3.3-14</b> <b>Ore Cross Section J-J'</b> <b>Fall River &amp; Custer Counties</b></p>				<p>Dewey-Burdock Project</p>		
				1 of 1		