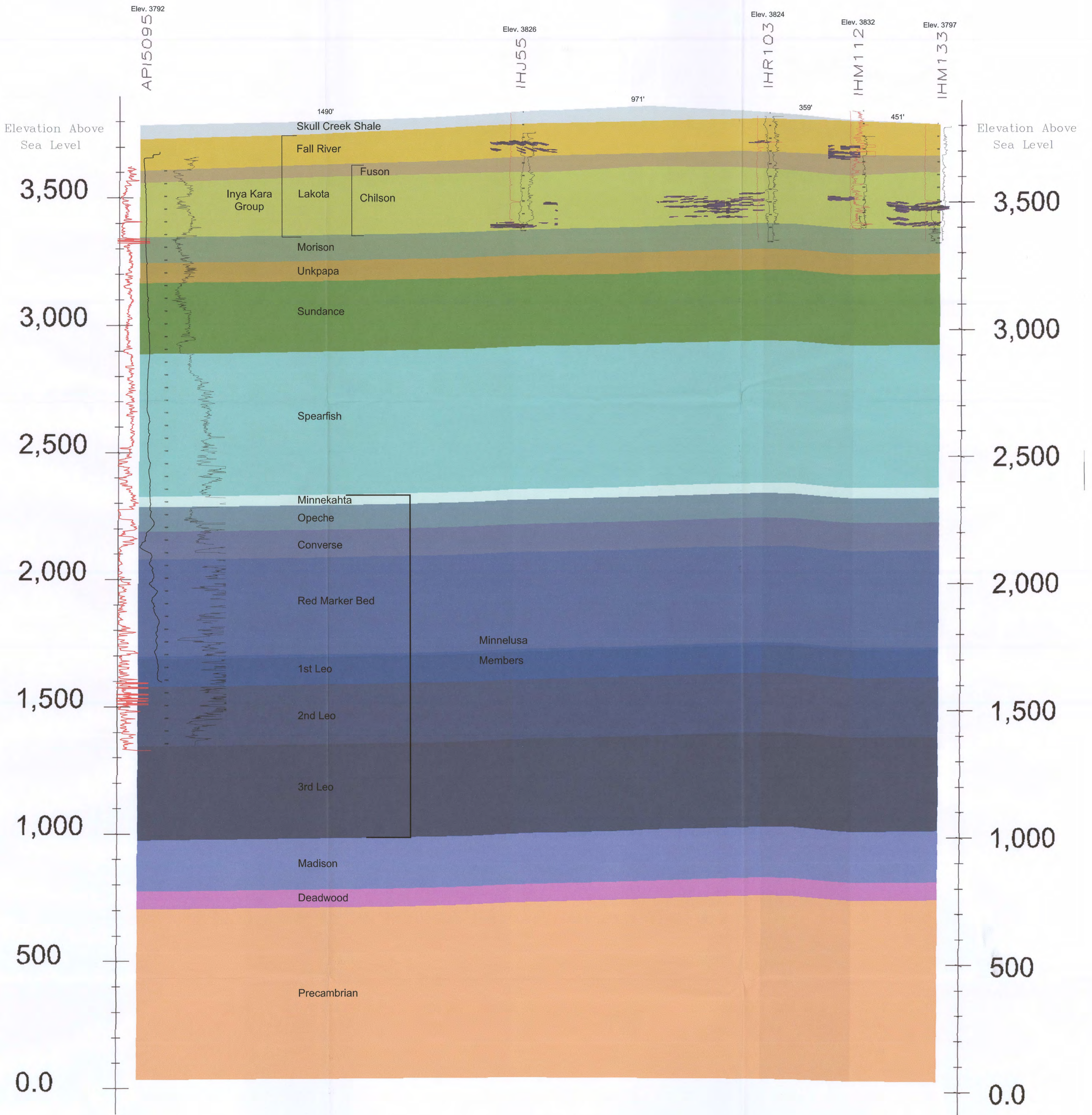


E Northwest

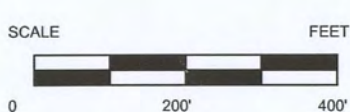
E' Southeast

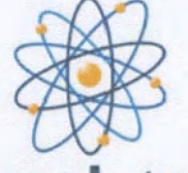


Z=1X

D63

Uranium Ore 0.02% Grade Cutoff



CONSULTANT		REVISIONS				 POWERTECH (USA) INC. PLATE 3.3-5 Generalized Cross Section Fall River County
#	DRAWN	CHECKED	APPROVED	DATE		
						PROJECT Dewey-Burdock Project COORDS SCALE As Noted FILENAME c:\powertech\south dakota\dewey burdock\autocad\2008\sections 10-15-2008\se-e\1xsec-e-e-ore11-11-08.dwg
CHECK SCALES	PLOT DATE 11-Nov-2008		DATE			
If this bar does not measure 1 inch this map is not at its original scale		DRAWN	RC	CHECKED		