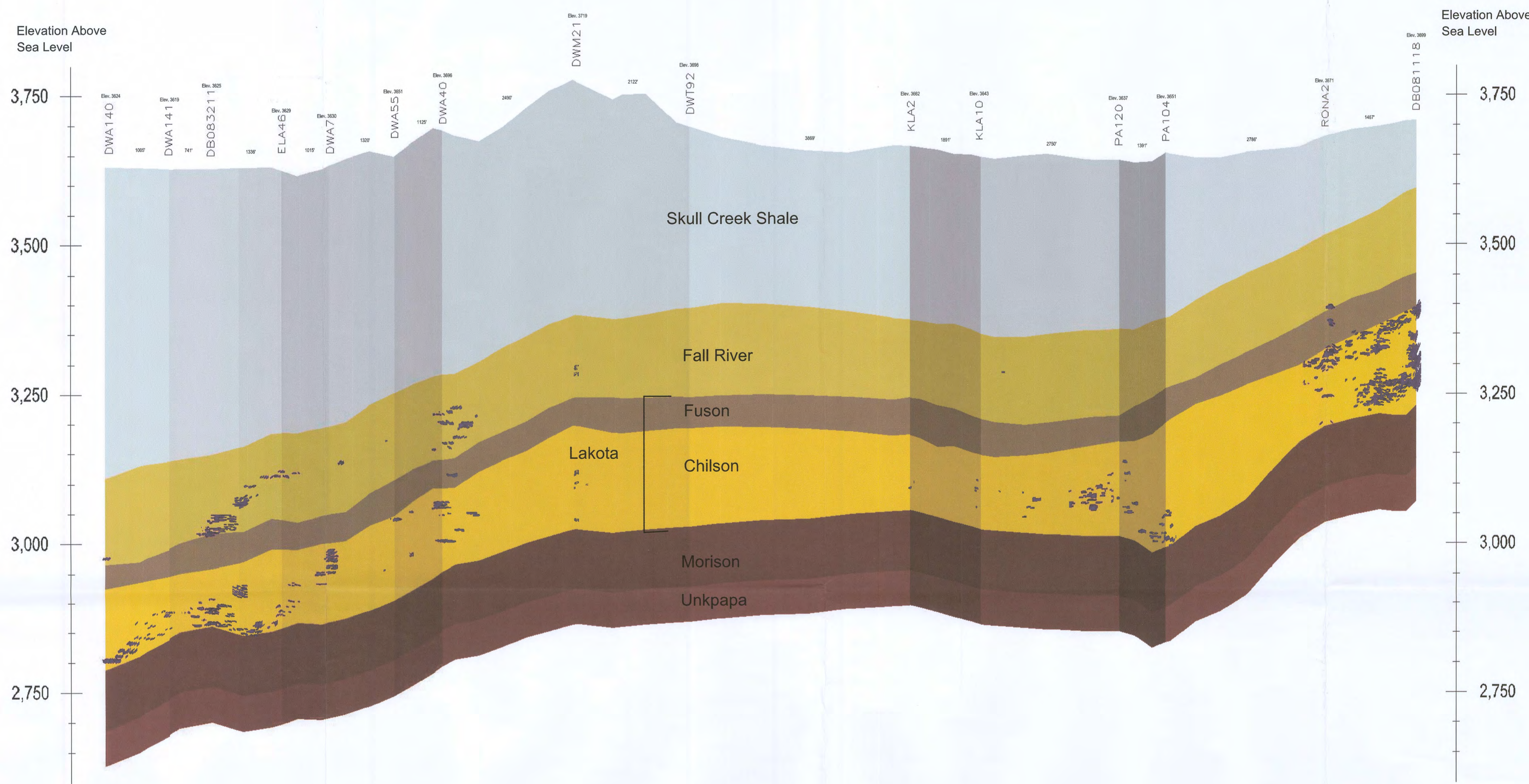


H
NORTHEAST

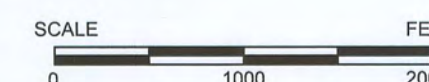
H'''
SOUTHWEST



vertical exaggeration = 10X

D50

Uranium Ore 0.02%
Grade Cutoff



CONSULTANT	REVISIONS				PROJECT Dewey-Burdock Project
	#	DRAWN	CHECKED	APPROVED	
REF					
CHECK SCALES		PLOT DATE		DATE	
If this bar does not measure 1 inch this map is not at its original scale		11-Nov-2008		11-Nov-2008	
SCALE		RC		COORDS	
Not Noted		FILENAME		c:\powertech\south dakota\dewey burdock\autocad\2008\sections 10-15-2008\h-h'''\u00sec h-h'''\ ore 11-11-08.dwg	
Arch D 24" x 36"		SCALE		1 of 1	

POWERTECH (USA) INC.
PLATE 2.6-13
Ore Cross Section H-H'''
Fall River & Custer Counties